

Standard Features

Interior

Cabinets

- High Pressure Laminate Countertops
- Stylish Picture Frame Flat Panel Cabinet Doors

Decor

- Color-Coordinated Designer Interiors
- Embossed Vinyl Flooring
- Padded Dinette Seat & Back Cushions
- Mini-Blinds at All Windows Except Bunks

Kitchen & Living Area

- 3 cu. ft. Dometic® Gas/Electric Refrigerator on 7' Models
- 5 cu. ft. RM2551 Dometic® Gas/Electric Refrigerator on 8' Models
- Wedgewood® Range Top (Two-Burner on 7' Models; 3-Burner on 8' Models)
- 0.7 cu. ft. Dometic® Microwave Oven w/Turntable & Clock
- Acrylic Kitchen Sink w/Faucet (Double Bowl on 8' Models)
- 12 Volt Demand Water Pump
- Furnace (16,000 Btu on 7' Models; 25,000 Btu on 8' Models)
- 5,000 Btu Air Conditioner on 7' Models
- 35 amp 12 Volt Power Converter w/120 Volt Load Center
- 6 Gallon Gas Water Heater
- TV Antenna w/Living Area Jack
- Power Range Hood on 8' Models
- Wall Border on 8' Models

Bath

- ABS Tub w/Tub Faucet, Shower Hose & Head
- Shower Curtain
- Hand Flush Thetford Toilet
- Towel Ring & Toilet Paper Holder

Exterior

Roof Construction

- Seamless One-Piece Roof (Aluminum on 7' Models; Rubber on 8' Models)
- Awning Drip Rail & Down Spouts

Wall Construction

- Wall Studs on 16" Centers (Maximum)
- Steel Strap Reinforcement on Walls for Superior Durability
- R-7 Settle-Resistant Insulation
- Twist Locks on All Storage Doors
- Clamp-Ring Radius Corner / Safety Glass Windows
- Patio Convenience Light
- Radius Entry Door w/Screen
- Assist Handle at Entry Door
- Custom Styled Exterior Graphics



Chassis Construction

- Cambered Steel Chassis w/Steel Outriggers
- Battery Rack
- Chassis-Mounted Entry Step
- Electric Brakes at All Wheels
- Radial Tires
- Spoke Steel Wheels
- Safety Chains & Breakaway Safety Switch
- Two Stabilizer Jacks in Rear
- Sidewinder Tongue Jack w/Foot
- Double Entry Step (On Most 8' Models)

Floor Construction

- 5/8" Tongue & Groove Floor Decking
- Tightly Sealed Woven Polyethylene Underbelly



NO-NONSENSE WARRANTY

Manufacturing defects reported to Skyline within one year after original retail delivery of your new Travel Trailer by an authorized dealer will be corrected without charge and within reasonable times. Excluded are misuse (including lack of reasonable maintenance), minor imperfections, alterations, and dealer or owner improper transportation, installation, or hookup.

This warranty gives you specific legal rights. You may have other rights which vary from state to state.

Skyline's suppliers often provide additional warranties on their components beyond the Skyline factory bumper-to-bumper warranty. For example — the range, water heater, furnace, converter, air conditioner, refrigerator, microwave and awning carry two-year warranties. Ask your dealer for full details.

Manufacturer's Notice: All specifications, equipment, and prices are subject to change without prior notice. Production of all models subject to seasonal scheduling. Skyline Corporation reserves the right to improve a model without incorporating these changes in similar models produced at an earlier date.

Consult your automobile dealer and your recreational vehicle dealer to assure the proper match between tow vehicle and trailer. Tow vehicle and recreational unit must be properly equalized for efficient product performance and safety. Before you purchase your recreational vehicle, carefully consider the number of people it will accommodate and its end use. Manufacturer's load capacity restrictions and recommendations must be followed for safe and efficient product performance.

Your Retailer, an independent contractor, who is not an agent of Skyline Corporation, is the party responsible for your purchase contract and any additions, deletions, alterations, or attachments made to or in your recreational vehicle.

Features

- 20 lb. LP Propane Tank (Single on 7' Models; Double on 8' Models)
- Holding Tanks w/Drain Outlet
- Rear Bumper w/Sewer Hose Carrier
- Carefree® Pioneer Lite Side Awning

Security & Safety

- Smoke Detector
- Propane Leak Detectors
- Carbon Monoxide Alarm
- Flush Door Latch w/Integral Dead Bolt Lock
- Fire Extinguisher

Options

- Double 30 lb. Propane Tank
- Propane Tank Cover
- 3-Burner Range w/Oven (on 8' Wide Models)
- RM2652 Double-Door Refrigerator (on 8' Wide Models)
- Spare Tire, Carrier & Cover
- 13,500 Btu Air Conditioner
- Stabilizer Jacks in Front
- AM/FM/CD Stereo w/Outside Speakers
- Monitor Panel
- Power Vent in Bath
- ABS Tub/Shower Surround
- Glass Shower Door (Models w/Neo-Angle Shower)

2012 Travel Trailers

BOBCAT



Your local **BOBCAT** dealer is:

SKYLINE
BRINGING AMERICA HOME. BRINGING AMERICA FUN.

For the name of your nearest Skyline-built RV dealer, call:
Elkhart, Indiana 1-800-736-2573

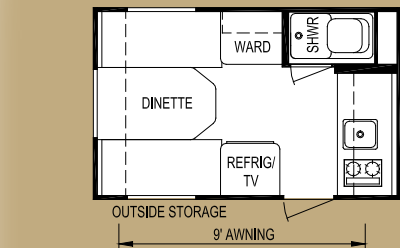
Or visit us at our Web Site at www.skylinecorp.com

©07-11, PRINTED IN THE U.S.A.

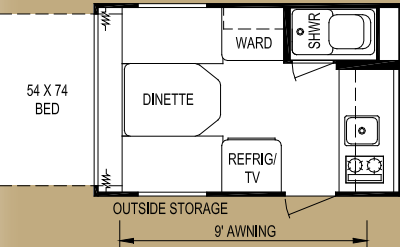
SKYLINE
BRINGING AMERICA HOME. BRINGING AMERICA FUN.

Effective July 2011

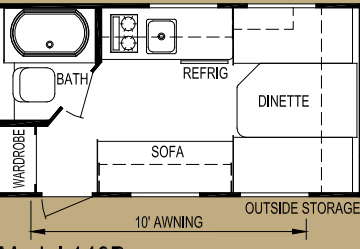
Travel Trailers (7' Wide Models)



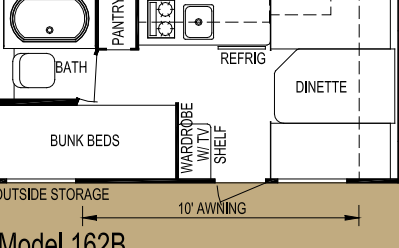
Model 130B



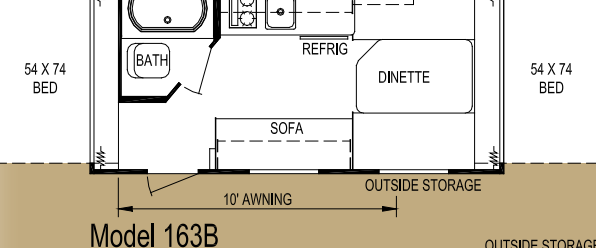
Model 131B



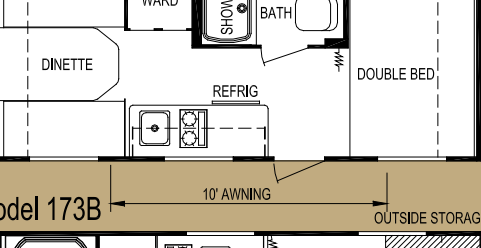
Model 140B



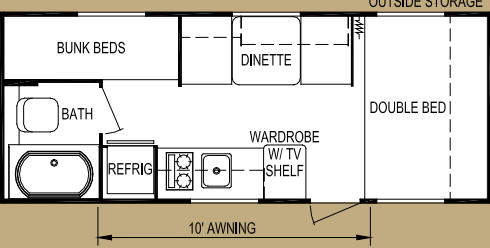
Model 162B



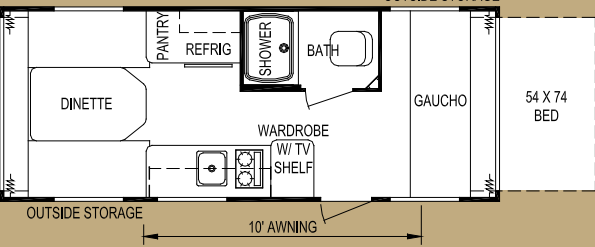
Model 173B



Model 183B



Model 186B



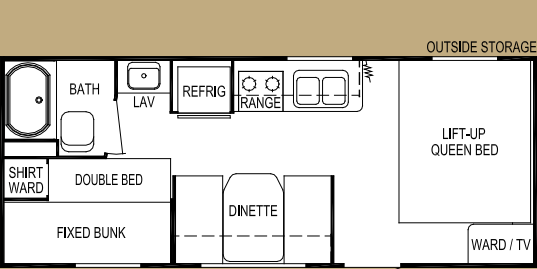
Model 191B

Specifications

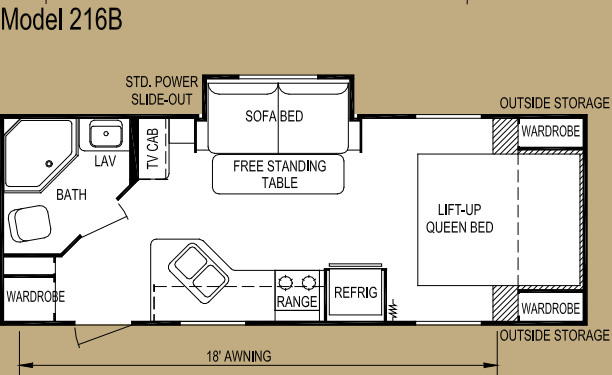
Model	130B	131B	140B	162B	163B	173B	183B	186B	191B	216B	239B	264B	273B	277B
Weights	Unloaded Vehicle Weight (see Note 2)													
	Dry Hitch Weight													
	Dry Axle Weight													
	GVWR (Total Capacity of Trailer)													
	Carrying Capacity (see Note 2)													
Accommodations	Sleeping (standard / optional)													
	Bed Size													
	Second Bed Size													
	Dinette Size													
	Sofa													
Measurements	Exterior Length (see Note 3)													
	Exterior Width (see Note 3)													
	Exterior Height (see Note 3)													
	Interior Height													
	Awning Size													
Capacities	Fresh Water System (gallons)													
	Gray Water Tank (gallons)													
	Black Water Tank (gallons)													
	Air Conditioner Size (Btu)													
	Convertor Size (amps)													
Notes	Furnace Rating (Btu)													
	Propane Gas Capacity (pounds)													
	Tires													
	Water Heater (gallons)													

(1) All weights, dimensions, and capacities shown are approximate values.
(2) Unloaded vehicle weight and carrying capacity will vary depending upon optional equipment. Full propane tanks are factored into carrying capacity. Skyline weighs every unit at the factory. See trailer weight information label located inside the front entry door for specific unloaded vehicle weight and cargo carrying capacity.
(3) Dimensions stated to industry standards. Exterior length includes approximately a four foot hitch on travel trailers. Exterior height includes air conditioner, if installed. Exterior width does not include the width of the awning, if installed.

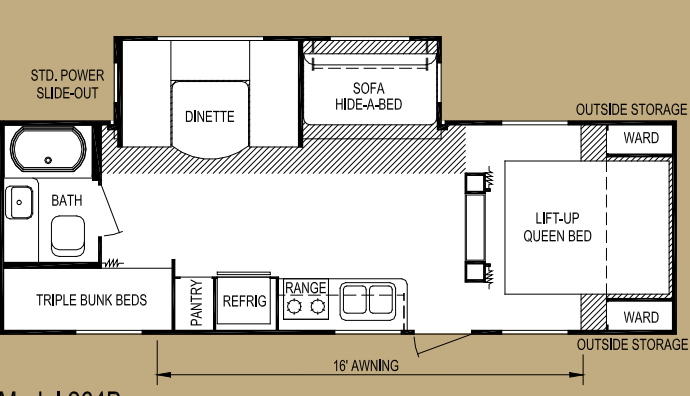
Travel Trailers (8' Wide Models)



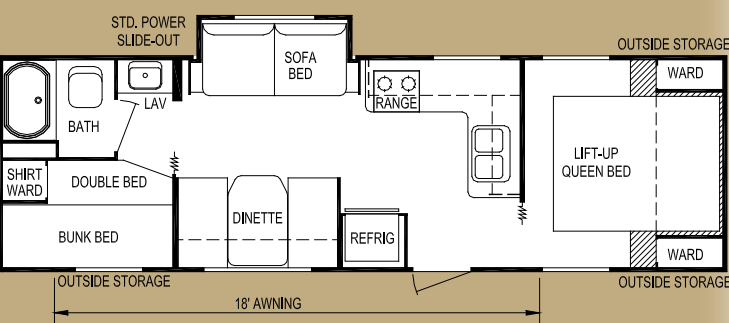
Model 216B



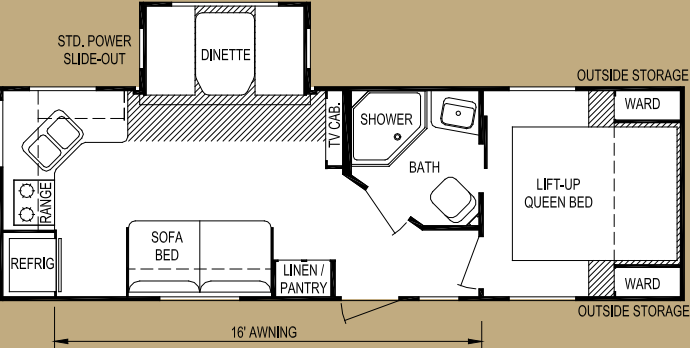
Model 239B



Model 264B



Model 273B



Model 277B

