

# BROOKSIDE

*by SunnyBrook*

2011



THE BEST OF ALL WORLDS





## ■ ■ ■ *Experience the Difference.*

Experience the true luxury of RV living with new Brookside designer interiors that abound with comfort. Exquisite solid Golden Oak or Autumn Maple cabinetry throughout the interior provides an abundance of storage space.

- A.** Our rear living room model 290FWRLS, shown in Elegance decor with Golden Oak cabinetry, exudes the beauty, comfort and functionality of Brookside design.
- B.** Truly a luxury fifth wheel, the 345FWSE is featured in Elegance decor with Autumn Maple cabinetry. This unit is shown with optional free standing table with four individual chairs.
- C.** The distinctive kitchen of the 305ROS provides all the standard features found in your home. Maple cabinets galore provide out-of-sight storage for all your kitchen needs.
- D.** The front kitchen in our 302FKS allows freedom of movement and the luxury of everything you find at home. Large double door refrigerator and microwave are included.
- E.** The entertainment slide-out in the 345FWSE is shown with optional 32" LCD HDTV, full Jensen® stereo system and a convenient desk cabinet for all your "work" needs.
- F.** The exciting new "L" shaped center kitchen in our 345FWRE features the most complete kitchen package found in today's luxury fifth wheels. Abundance of maple cabinets and all the home-style amenities you could ask for. Enjoy showing this to your neighbors.



B



F



A

■ ■ ■ *Experience the Comfort.*

**A.** The new 345FWSE master bedroom suite features a full sized residential queen bed and mattress. Mirrored sliding deep closed doors and a private bath entrance make this a most desirable and comfortable floor plan.

**B.** Our 290FWRLS has all the bedroom amenities of your home. Featured in Autumn Maple is a large chest of drawers, abundant sized vanity, spacious mirrored wardrobe and a full queen sized bed and mattress.

**C.** The 302FKS shown in Opal decor features a large bedroom slide-out containing a residential sized queen bed and mattress, double door mirrored wardrobes and the exclusivity of your own private bath.

**D.** The 345FWSE home-like bath area contains a lighted vanity mirror, porcelain toilet, a roomy shower with glass door, and abundant Maple cabinetry for storing the necessities.



B



D



C

# FEATURES

## OUTSIDE KITCHEN OPTION



Our new Outside Kitchen is the perfect innovation for tailgate entertaining. It features an expansive complete kitchen that opens to your outside "play area".



■ The extra large movable grab handle is standard on all models and provides a safer assist while entering or exiting your coach.

■ Standard true gelcoat exterior sidewalls make a Brookside look better and radiused 30" entry door and windows are high-end as well.

■ Three-step entry way comes standard on all models.



■ Main exit doors now have a sliding "clear pane" covering the door handle/lock area providing complete outside visibility — no longer do you have that solid color covering. A "Poodle Panel" is at the bottom of the door to keep your pets from scratching that nice screen door.



■ Beauflor® - a new flooring dimension is resistant to mold & mildew, cold cracking, slipping and stains. The surface is highly resistant to tears, rips and gouges.



■ Other brands come with cheap plastic toilets. Not a Brookside. We offer standard porcelain foot flush toilets.



■ The Brookside entertainment center features an optional 32" LCD HDTV.



■ Tires on all Brookside models are filled with nitrogen. It provides improved fuel economy; tire life, braking and handling, and safety. Shown with optional aluminum wheels.



■ Dual 30 lb. LP tanks are standard in this slider compartment on fifth wheels only. Brookside offers many convenience features others ignore.



■ Extra large storage and radiused baggage doors are standard. This cavernous front storage area can be accessed from the front and both sides.



■ This aluminum tread plate (ATP) front stonguard is standard on travel trailer models. It looks great while keeping road debris down.



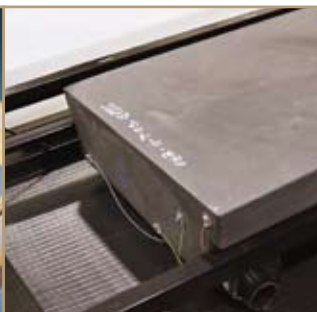
■ Optional externally mounted speakers are channeled to the inside stereo. The outdoor high illumination scare light is standard.



■ Beefy, six-lug hubs and Super Lube axles are standard. A Brookside unit is built better and easier to maintain than others.



■ Real, lumber core cabinet stiles (vs. cheap MDF style stiles) are screwed together to provide the best cabinetry. We also use real poplar hardwood cabinet cleating vs. cheap pine that the competition uses.



■ Heated and enclosed holding tanks (56 gallon fresh!) along with ducted floor heat and solid steel I-beam frame are first class!



■ Your Brookside is built better. R-7 insulation and a full walk-on rubber roof are more proof. Check out our aluminum superstructure!



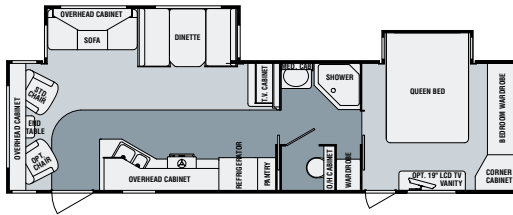
■ R-7 insulated floor with 5/8" tongue and groove exterior grade plywood on aluminum floor joists is standard. Competitors typically use OSB or particle board



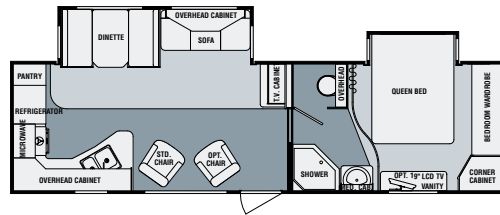
■ All water lines are color coded and use solid brass fittings at every joint. This reduces the chance of waterline mixup during inspection and/or repair.

# TRAVEL TRAILER FLOORPLANS

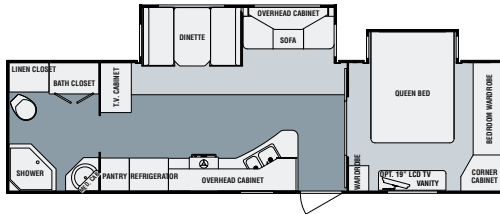
300 RLS



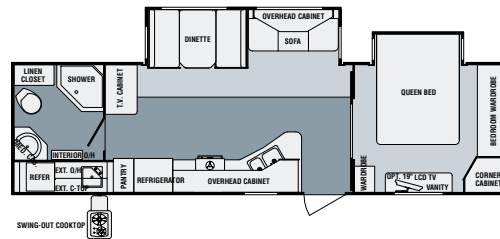
303 SLS



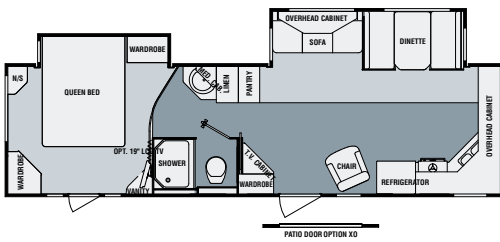
301 RBS



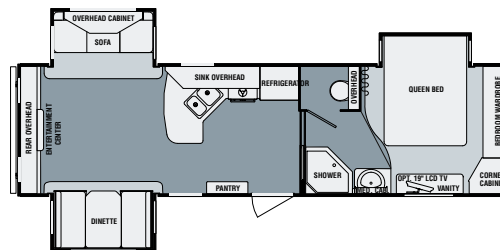
305 ROS



302 FKS

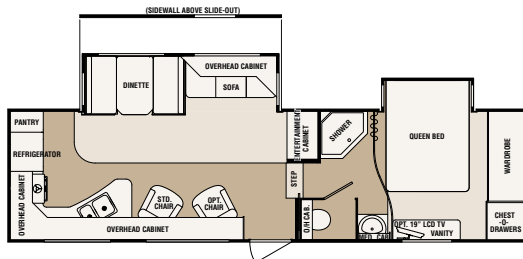


306 RES

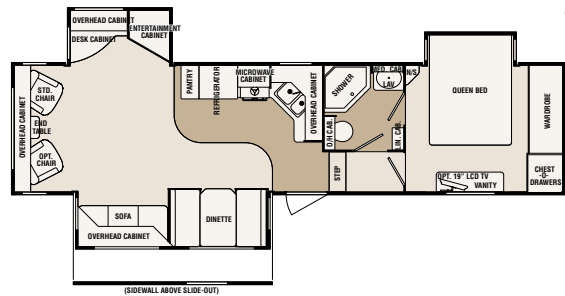


# FIFTH WHEEL FLOORPLANS

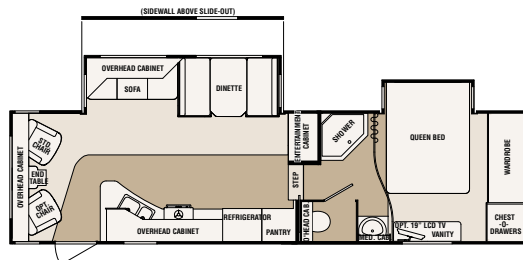
276 FWSC



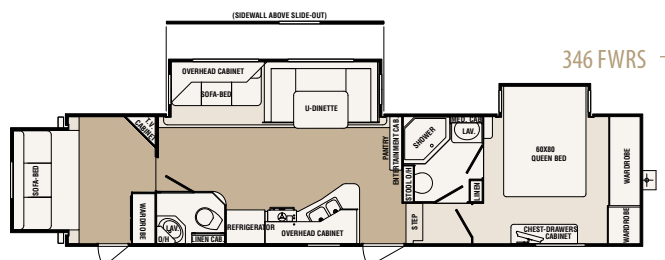
345 FWSE



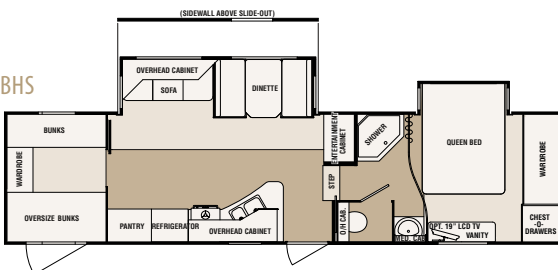
290 FWRLS



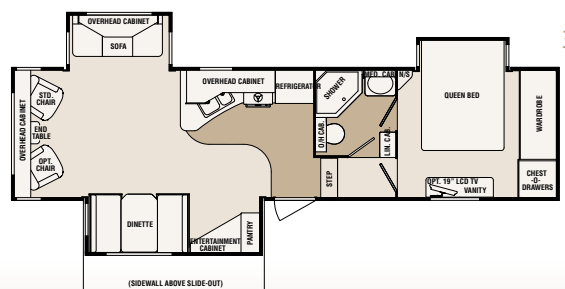
346 FWRS



298 FWBHS



349 FWSB



# S P E C I F I C A T I O N S + S T A N D A R D S / O P T I O N S

Measurements	300 RLS	301 RBS	302 FKS	303 SLS	305 ROS	306 RES	276 FWSCS	290 FWRLS	298 FWBHS	345 FWSE	346 FWRS	349 FW5B
	Exterior Length*	34'-9"	33'-11"	33'-10"	33'-10"	33'-11"	33'-11"	32'	32'	34'-2"	34'-9"	35'-10"
Exterior Height**	11'-1"	11'-1"	11'-1"	11'-1"	11'-1"	11'-1"	12'-7"	12'-7"	12'-7"	12'-7"	12'-7"	12'-7"
Exterior Width	8'-0"	8'-0"	8'-0"	8'-0"	8'-0"	8'-0"	8'-0"	8'-0"	8'-0"	8'-0"	8'-0"	8'-0"
Interior Height	6'-8"	6'-8"	6'-8"	6'-8"	6'-8"	6'-8"	7'-11"	7'-11"	7'-11"	7'-11"	7'-11"	7'-11"
Hitch Height	20"	20"	20"	20"	20"	20"	45-1/2"	45-1/2"	45-1/2"	45-1/2"	45-1/2"	45-1/2"

## Capacities

Dry Hitch Weight/Lbs.***	TBD	1194	955	1020	1165	942	1831	2145	2119	2183	TBD	2084
Dry Gross Weight/Lbs.***	TBD	7543	7588	7442	7940	7652	8623	8668	9032	9484	TBD	9472
GVWR/Lbs.	10000	10000	10000	10000	10000	10000	12700	12700	12700	12700	12700	12700
Fresh Water Cap./Gal.	56	56	56	56	56	56	56	56	56	56	56	56
Black Water Cap./Gal.	33	33	33	33	33	33	33	33	33	33	66	33
Gray Water Cap./Gal.	33	33	66	66	33	66	63	63	63	66	66	66
Sleeping Capacity	6	6	6	6	6	4	6	6	10	6	8	6

## Features

Dual 5200 Lb.	Str. Axles	Str. Axles	Str. Axles	Str. Axles	Str. Axles	Str. Axles	Str. Axles	Str. Axles	Str. Axles	Str. Axles	Str. Axles	Str. Axles
Tire Size	ST225/75D/15D	ST225/75D/15D	ST225/75D/15D	ST225/75D/15D	ST225/75D/15D	ST225/75D/15D	ST225/75D/15D	ST225/75D/15D	ST225/75D/15D	ST225/75D/15D	ST225/75D/15D	ST225/75D/15D
Optional Awning Size	19'	20'	20'	20'	20'	18'	17'	17'	20'	14'	14'	14'
Furnace Size	30M BTU	30M BTU	30M BTU	30M BTU	30M BTU	30M BTU	30M BTU	30M BTU	31M BTU	30M BTU	30M BTU	30M BTU
Dometic Gas/Elec. Refrig.	Double Door	Double Door	Double Door	Double Door	Double Door	Double Door	Double Door	Double Door	Double Door	Double Door	Double Door	Double Door

\*From center of king pin to rear bumper \*\*Includes AC on roof \*\*\*Not including options

## Value Package (Required)

Aluminum Structure	Double Door Refrigerator	Oven	Satellite Ready	Valances with Curtain
Bedspread	LP Leak Detector	30 Lb. LP Bottles	Large Mirrored Door Closet	Wallpaper Border
Cable TV Hook Up	Night Shades	Radius Entry Door	Tub Surround	Water Heater By-Pass
Carbon Monoxide Detector	Outside Security Light	Roof Vent	TV Antenna with Booster	30 Lb. LP Bottle Cover (TTs Only)

## Camping Time Package (Required)

13.5 Ducted A/C	Microwave	Jensen AM/FM/CD/DVD with 6 Speakers	Swing Out Grab Handle	Skylight Over Tub
Awning	Stabilizer Jacks	Walk on Roof	6 Gallon DSI Gas/Electric Water Heater	Telephone Jack

## LX Package (Optional)

Sink Cover	Outside Shower	Power Awning	Delete Window Above Slide Room (FWs Only)
Stove Cover	Black Tank Flush	Day/Night Shades	Raised Lower Cabinet Doors in Kitchen & LR
32" LCD TV	Spare Tire, Carrier & Cover	Wood Rafters IPO Aluminum Rafters	LX Graphics
Raised Panel Refrigerator Inserts	Roof Ladder	Flush Panel Passage Doors	

## Options

Free Standing Table with 4 Chairs	15.0 BTU A/C Upgrade from Standard	32" LCD HDTV	16" Alum. Spare Tire, Carrier & Cover (FWs Only)
Optional Swivel Rocker (N/A 298 FWBHS, 301 RBS, 302FKS)	Ceiling Fan (FWs Only)	19" LCD HDTV in Bedroom	16" Radial Tires, Alum. Wheels & Equa Flex Suspension System (FWs Only)
Optional Recliner (N/A 298 FWBHS, 301 RBS, 302FKS)	Heat Strip for A/C in Kitchen	Raised Panel Refer Front	15" Spare Tire, Carrier & Cover
(1) Recliner ILO (1) Swivel Rocker	Heat Strip for A/C in Bedroom (FWs Only)	Day/Night Shades IPO Mini Blind	15" Aluminum Wheels Upgrade
Flair Hide-A-Bed with Inflatable Mattress	Bedroom 2nd A/C (Dual Ducted) Ready (FWs Only)	Day/Night Shades IPO Night Shade	Roof Ladder
8 Cu. Ft. Extra Large Refrigerator	50 AMP Electrical Service (FWs Only)	Sliding Patio Door (302FKS Only)	Tinted Safety Glass
10 Gal. Gas/Electric DSI Water Heater	Range Cover	Outdoor Kitchen (298FWBHS Only)	12V Power Awning
13.5 Ducted A/C in Bedroom (FWs Only)	Sink Cover	Outside Shower	
15.0 Ducted A/C in Bedroom (FWs Only)	Bedroom TV Jack with 110V Outlet (TT's Only)	Black Tank Flush	

# B E T T E R   B Y   D E S I G N

## All Aluminum Superstructure

SunnyBrook RV pioneered the all aluminum superstructure over 18 years ago, because we care about quality. You'll find more and thicker aluminum posts, cross members and roof bows than our competitors. Our lite-aluminum superstructure is screwed and glued together NOT welded. Welds can break under stress. Our bonded and screwed framing is lighter and stronger. Competitive brands use thinner posts, fewer bows, much less aluminum and sidewalls are glued to Lauan. There is a difference. Look into this before you make your buying decision. SunnyBrook RV has always kept the highest standards.



## SunnyBrook RV

201 14th Street | Middlebury, IN 46540  
(574) 825-5250

[www.sunnybrookrv.com](http://www.sunnybrookrv.com)

*your SunnyBrook RV Dealer:*



Tow Vehicle Disclaimer. CAUTION: Owners of SunnyBrook RV, Inc. recreational vehicles are solely responsible for the selection and proper use of tow vehicles. All customers should consult with a motor vehicle manufacturer or their dealer concerning the purchase and use of suitable tow vehicles for SunnyBrook RV, Inc. products. SunnyBrook RV, Inc. disclaims any liability or damages suffered as a result of the selection, operation, use or misuse of a tow vehicle. SUNNYBROOK RV INC.'S LIMITED WARRANTY DOES NOT COVER DAMAGE TO THE RECREATIONAL VEHICLE OR THE TOW VEHICLE AS A RESULT OF THE SELECTION, OPERATION, USE OR MISUSE OF THE TOW VEHICLE.

All illustrations and specifications contained in this literature are based on the latest product information available at the time of printing. SunnyBrook RV, Inc. reserves the right to make changes to colors, materials, specifications and pricing without notice or obligation. Photography may show optional equipment available at an additional cost. Items used as props in photography are not part of the packages. All liquid capacities and weights are approximate and dimensions are nominal. SunnyBrook reserves the right to make changes and improvements without incorporating these changes into similar models produced at an earlier date. Consult your local, authorized Brookside or SunnyBrook dealer for the latest information and changes. SunnyBrook RV, inc. continues to be a member in good standing of the RVIA.