

HARMONY

by SunnyBrook

2011



THE PERFECT BLEND OF LUXURY AND ADVENTURE



A

■ ■ ■ *Experience the Perfect Blend.*

Discover new horizons beyond the realm of ordinary. Old world quality and modern day conveniences together create an interior ambience that's gratifying and distinctive. . . Harmony. Creative ingenuity is found in the numerous inventive features that add convenience while conserving space. The abundance of aesthetic details, as well as a generous helping of luxury, provides the comfort and style you deserve.

- A.** Our new 281FWRLS fifth wheel is featured with Golden Oak cabinetry and Cappuccino décor. The Beauflor® wood grain linoleum provides the look of residential hardwood floors. Abundant storage is provided in the overhead cabinets and under the booth dinette.
- B.** The new 285FWRKS shown with Autumn Maple cabinetry and Tropimint décor features all the true pleasures of your home while you are on the go. This unit is shown with comfortable swivel rockers and optional Hide-A-Bed.
- C.** The THX is the proud new member of Harmony's Toy Hauler series and is shown with Golden Oak cabinetry and Millennium décor. The THX has a huge convertible cargo area, optional electric bed, sofas and a pull down screen.
- D.** This 28BHS model features a large "U" shaped dinette (for all the gang), a nice oven for kid's cookie baking, rear bunk house and a bathroom that is accessible from inside or out.





A

■ ■ ■ *Experience the Comfort.*

A. Cozy comfort describes the luxurious master bedroom area featuring a residential size queen bed with pillow-top mattress. The beautiful Tropimint décor matching bedspread, his and her shirt closets and abundant storage in our new Autumn Maple cabinetry, makes this truly a “perfect blend of luxury and comfort”.



B

B. A fully enclosed shower with glass door and skylight, a beautiful sink cabinet and overhead medicine chest in matching Maple décor enhances your bedroom/bathroom master suite area. You’ll notice the little things like the flip-up TV tray located on the bedroom wall for ease of viewing.



C

C. Our new entertainment center (available in 25CKS & 28BHS) features a unique rotating TV (optional with Jensen® flat screen TV), and Jensen® AM/FM/CD/DVD player combo. The TV can now be viewed from the kitchen, living/dining area, or front bedroom. How good is that – one TV for four areas!

FEATURES



■ Main exit doors now have a sliding “clear pane” covering the door handle/lock area providing complete outside visibility — no longer do you have that solid color covering. A “Poodle Panel” is at the bottom of the door to keep your pets from scratching that nice screen door.



■ “Beauflor®” - a new flooring dimension is resistant to mold & mildew, cold cracking, slipping and stains. The surface is highly resistant to tears, rips and gouges.



■ The rear bumper is standard on most models and is shown with optional spare tire carrier.



■ True Gelcoat™ molded Fiberglass front cap is an option on all fifth wheels.



■ Standard individually adjustable jack stands are available on both travel trailers and fifth wheels, providing ease of leveling and stability.



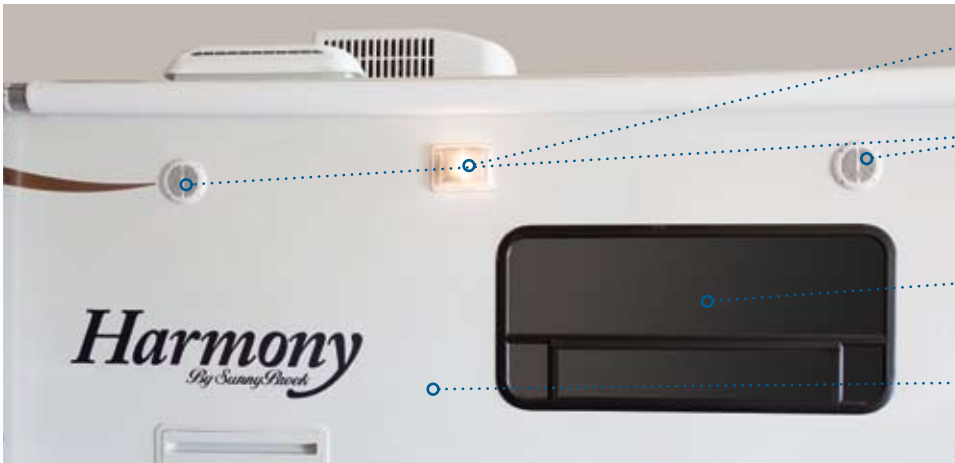
■ Nitrogen filled tires mounted on aluminum wheels are standard on all Harmony models. Also standard is a rubberized Equa-Flex Trailair® center point suspension system.



■ Extra large, pass-through storage is standard on most floorplans. This finished compartment is lockable.



■ Externally accessible propane gas port is standard and allows outdoor hookups for BBQ and Tailgating parties.



■ Double switched outdoor Scare light is standard and can be turned on as white or yellow or both for your convenience.

■ Two externally mounted speakers allow you to channel your favorite tunes from the inside Jensen® stereo to the outside Tailgating area. Think of your neighbors — watch the noise level!!

■ Tinted safety glass windows are standard on all Harmony models. Looks cool outside and keeps you cool inside.

■ True Gelcoat™ fiberglass sidewalls are also standard on all Harmony models. You don't have to worry about these turning yellow like some competitors cheap Filon™ panels do.



■ The 28BHS full bath has a convenient outside entry. It also features an inside entrance and full shower with skylight.



■ Fully extendable drawer glides, allowing total drawer accessibility, are standard on all Harmony models.



■ Standard hidden door hinges give your cabinets that residential look you desire.

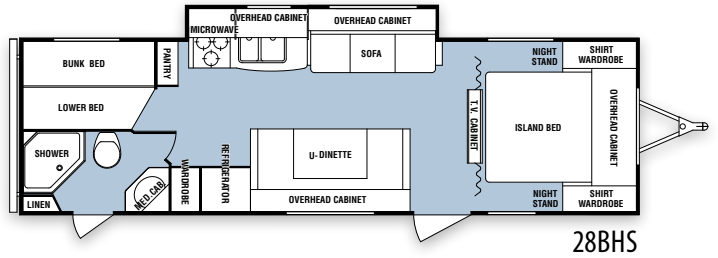
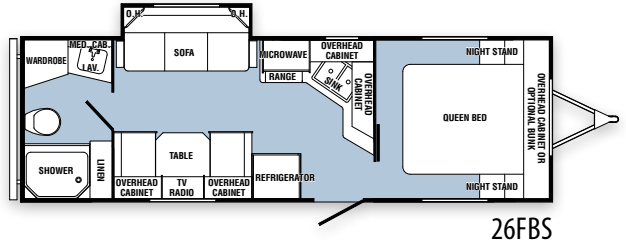
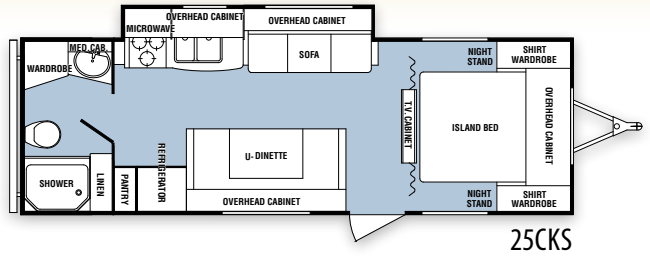
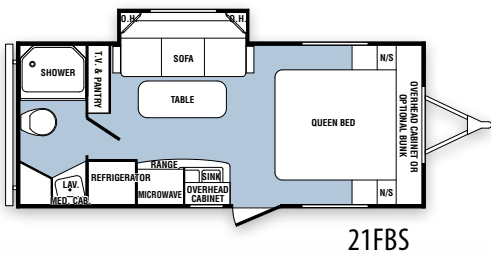
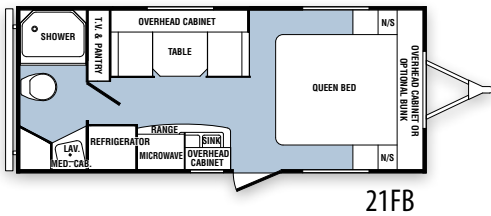
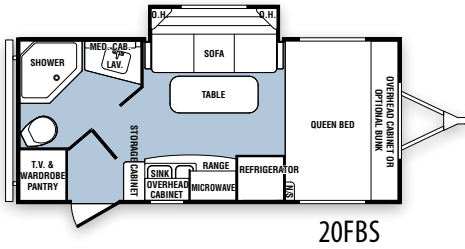
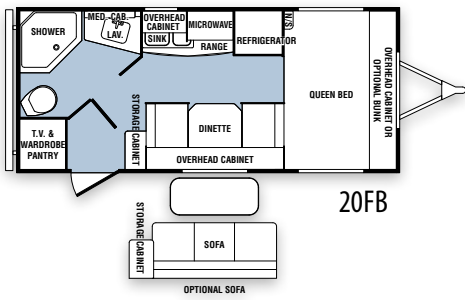
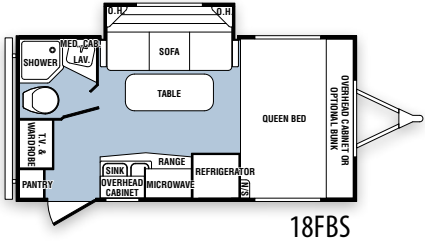
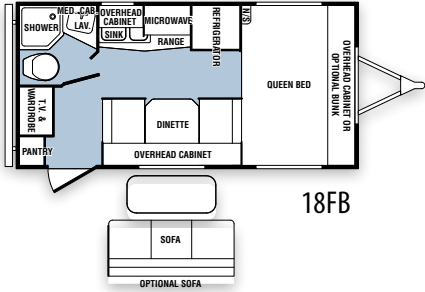


■ Other brands come with cheap plastic toilets. Harmony has porcelain foot-flush toilets standard!

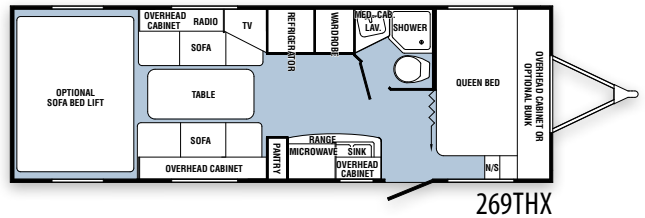
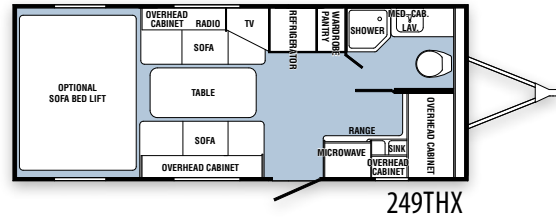


■ All Harmony cabinet frames are screwed together. This provides a stronger product than stapling.

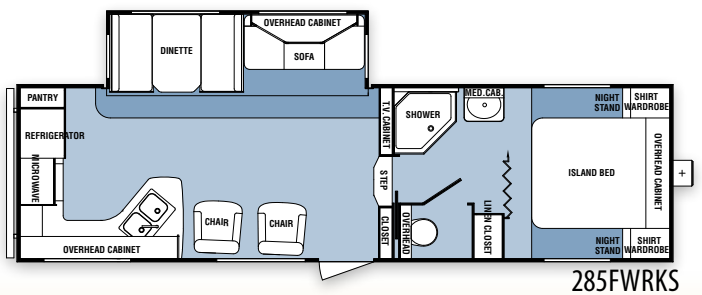
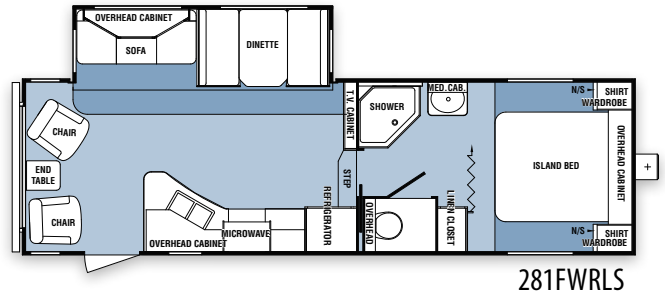
FLOORPLANS



THX Models



Fifth Wheels



STANDARDS + OPTIONS

Value Package (Required)

| | | |
|---|---------------------------------------|--------------------------------------|
| Deluxe Graphic Package | 30 Lb. LP Bottles (Fifth Wheels Only) | Water Heater By-Pass |
| Bedspread | AM/FM/CD/DVD Player | Aluminum Wheels |
| Cable TV Hook Up | Skylight Over Tub | Exterior Speakers |
| Carbon Monoxide/LP Leak Detector | Tinted Safety Glass | 14 x 14 Power Bath Vent |
| Double Door Refrigerator | Full Extension Drawer Guides | 4 Stabilizer Jacks on TT and 2 on FW |
| Gel-Coat Sidewalls | Tub Surround | Walk on Roof |
| Night Shades | TV Antenna with Booster | |
| 20 Lb. LP Bottles with Cover (TT Models Only) | Pillow Top Mattress | |

Optional Camping Time Package

| | | |
|-----------------------|--|---------------------------------------|
| 13.5 Ducted A/C | 6 Gallon DSI Gas/Electric Water Heater | Power Front Jacks (Fifth Wheels Only) |
| Awning | Spare Tire, Carrier, and Cover | Roof Ladder (Fifth Wheels Only) |
| Microwave | 3 Burner Range with Oven (Fifth Wheels Only) | |
| Outside Wash Down Kit | 2 Swivel Rockers (Fifth Wheels Only) | |



Optional Equipment

| | | |
|--|---|---|
| Jack Knife Sofa IPO Dinette (18FB, 20FB Only) | Electric Rear Bed (THX Models Only) | Lil' Dog Graphics Package (THX Models Only) |
| Heat Strip For A/C | Shower Door (N/A 18FB, 18FBS, 249THX, 269THX) | Front Overhead Bunk (N/A 249THX, 281FWRLS, 285FWRKS) |
| Convection Microwave Upgrade (NA 25CKS, 28BHS) | Create A Breeze Vent IPO Bedroom Vent | Free Standing Dinette Table and 4 Chairs (Fifth Wheels Only) |
| BR TV Jack with 110V Outlet (25CKS, 28BHS Only) | Generator Tray (THX Models Only) | Flair Hide A Bed with Inflatable Mattress (Fifth Wheels Only) |
| 26" LCD TV (25CKS, 28BHS, 281FWRLS, 285FWRKS Only) | Power Awning Upgrade From Standard Awning | Gel-Coat Fiberglass Front Cap (Fifth Wheels Only) |
| 19" LCD TV | Pull Down Rear Screen (THX Models Only) | Roof Ladder |
| Electric Rear Sofa (THX Models Only) | Cargo Area Roll Up Carpet (THX Models Only) | |

For more, see your Harmony dealer for details. Standards, options and specifications are subject to change.

SPECIFICATIONS

| Model | Measurements | | | | | Capacities | | | | | | | Features | | | |
|----------|------------------|-------------------|----------------|-----------------|--------------|--------------------------|--------------------------|-----------|-----------------------|-----------------------|----------------------|---------------|-------------|-------------------|-------------|--------------|
| | Exterior Length* | Exterior Height** | Exterior Width | Interior Height | Hitch Height | Dry Hitch Weight/Lbs.*** | Dry Gross Weight/Lbs.*** | GVWR/Lbs. | Fresh Water Cap./Gal. | Black Water Cap./Gal. | Gray Water Cap./Gal. | Sleeping Cap. | Tire Size | Str. Axles (Lbs.) | Awning Size | Furnace Size |
| 18FB | 18' 10" | 10' 0" | 7' 6" | 6' 4" | 23" | 395 | 3400 | 5500 | 43 | 25 | 33 | 4 | ST205/75D14 | 3500 | 10' | 18M BTU |
| 18FBS | 18' 10" | 10' 0" | 7' 6" | 6' 4" | 23" | 355 | 3580 | 5500 | 43 | 25 | 33 | 4 | ST205/75D14 | 3500 | 10' | 18M BTU |
| 20FB | 20' 10" | 10' 0" | 7' 6" | 6' 4" | 23" | 353 | 3526 | 5500 | 43 | 25 | 33 | 4 | ST205/75D14 | 3500 | 12' | 18M BTU |
| 20FBS | 20' 10" | 10' 0" | 7' 6" | 6' 4" | 23" | 385 | 3680 | 5500 | 43 | 25 | 33 | 4 | ST205/75D14 | 3500 | 12' | 18M BTU |
| 21FB | 21' 11" | 10' 0" | 7' 6" | 6' 4" | 23" | 359 | 3590 | 5500 | 43 | 25 | 33 | 4 | ST205/75D14 | 3500 | 14' | 18M BTU |
| 21FBS | 21' 11" | 10' 0" | 7' 6" | 6' 4" | 23" | 420 | 3820 | 5500 | 43 | 25 | 33 | 4 | ST205/75D14 | 3500 | 14' | 18M BTU |
| 25CKS | 28' 6" | 10' 4" | 8' 0" | 6' 5" | 25" | 640 | 5240 | 7700 | 43 | 36 | 33 | 6 | ST205/75D14 | 3500 | 19' | 30M BTU |
| 26FBS | 27' 7" | 10' 0" | 7' 6" | 6' 4" | 23" | 640 | 4540 | 5500 | 43 | 25 | 33 | 6 | ST205/75D14 | 3500 | 14' | 20M BTU |
| 28BHS | 31' 6" | 10' 4" | 8' 0" | 6' 5" | 25" | 675 | 5560 | 7700 | 43 | 36 | 33 | 9 | ST205/75D14 | 3500 | 18' | 30M BTU |
| 249THX | 24' 9" | 10' 2" | 8' 0" | 6' 4" | 25" | 565 | 4180 | 7000 | 43 | 25 | 33 | 4 | ST205/75D14 | 3500 | 14' | 18M BTU |
| 269THX | 28' 8" | 10' 2" | 8' 0" | 6' 4" | 25" | 645 | 4820 | 7000 | 43 | 25 | 33 | 6 | ST205/75D14 | 3500 | 19' | 20M BTU |
| 281FWRLS | 28' 11" | 11' 11" | 8' 0" | 7' 11" | 45" | 1755 | 6994 | 10,500 | 56 | 36 | 36 | 6 | ST225/75D15 | 5200 | 19' | 30M BTU |
| 285FWRKS | 30' 7" | 11' 11" | 8' 0" | 7' 11" | 45" | 1585 | 7402 | 10,500 | 56 | 36 | 72 | 6 | ST225/75D15 | 5200 | 21' | 30M BTU |

*From center of coupler to rear bumper **Includes AC on roof ***Not including options

THX **Loaded with fun!**

Our newest Toy Hauler model, the THX, comes in a standard model or with the up-scale "Lil-Dog" graphics package. Both models feature an optional electric lift bed in the rear, two folding sofas (electric optional) with collapsible table and an optional rear screen. All this plus the regular amenities found in a standard travel trailer. Put everything down in the back and you have a comfortable area for sitting, eating and sleeping. Put it all up and stowed, take up the optional carpet and like magic you have plenty of room to store all your toys. We've even included an optional wood box and generator rack for your convenience. What more could you ask for?

**Optional
wood box and
generator rack**



Lil' Dog graphics package

Upgrade in style with the optional Lil' Dog graphics package. Available on 249THX and 269THX.



Harmony
By SunnyBrook

SunnyBrook RV, Inc.

201 14th Street | P.O. Box 2001 | Middlebury, IN 46540 | (574) 825-5250

www.sunnybrookrv.com

your SunnyBrook RV Dealer:

Tow Vehicle Disclaimer. CAUTION: Owners of SunnyBrook RV, Inc. recreational vehicles are solely responsible for the selection and proper use of tow vehicles. All customers should consult with a motor vehicle manufacturer or their dealer concerning the purchase and use of suitable tow vehicles for SunnyBrook RV, Inc. products. SunnyBrook RV, Inc. disclaims any liability or damages suffered as a result of the selection, operation, use or misuse of a tow vehicle. SUNNYBROOK RV INC.'S LIMITED WARRANTY DOES NOT COVER DAMAGE TO THE RECREATIONAL VEHICLE OR THE TOW VEHICLE AS A RESULT OF THE SELECTION, OPERATION, USE OR MISUSE OF THE TOW VEHICLE.

All illustrations and specifications contained in this literature are based on the latest product information available at the time of printing. SunnyBrook RV, Inc. reserves the right to make changes to colors, materials, specifications and pricing without notice or obligation. Photography may show optional equipment available at an additional cost. Items used as props in photography are not part of the packages. All liquid capacities and weights are approximate and dimensions are nominal. SunnyBrook reserves the right to make changes and improvements without incorporating these changes into similar models produced at an earlier date. Consult your local, authorized Harmony dealer for the latest information and changes. SunnyBrook RV, Inc. continues to be a member in good standing of the RVIA.