



# RAVEN

*Sunny Brook*

• INNOVATIVE PRODUCT OF THE YEAR •



FIFTH WHEELS & TRAVEL TRAILERS

UNPARALLELED INNOVATIONS & CLASS

■ ■ ■ *Experience the Perfect Blend.*

Walk in and experience the wide open spaces of a true luxury suite. Beautifully appointed with all the right amenities you desire in your "Home away from Home". Raven's dynamic interiors have left nothing to chance. Our residential style furniture and designer window treatments are impeccable.



**A.** The view from the back of the coach looking forward reveals a well planned layout of the center island kitchen in relation to the free standing dinette. Convenience has been engineered into every function of the beautiful new Raven. Main slide rooms on our fifth wheel are 75" tall making your movements as easy as if you were in your home. Our new hide-a-bed sofa features an Air Comfort mattress and large storage areas below the seat and in the innovative arm rests.

**B.** As you come down from the wonderfully appointed front bedroom, hold your breath... what can you say? A full sized free-standing dinette with table extensions makes for an expansive dinner setting. All chairs have lift-up seats for added storage. Shaw® premium grade carpet combined with beautiful linoleum sets the stage for the most functional and long lasting flooring in the industry. The designer solid surface kitchen counter top, matching sink covers and high rise faucet make this the most convenient and well planned kitchen work area you will ever see. Huge safety glass tinted windows make your coach the lightest and brightest anywhere.

**C.** This beautiful rear entertainment area features deluxe swivel rockers, fireplace and a large LCD flat panel TV that will actually recede into the cabinet. Large Glazed Cherry cabinet doors enhance the décor of this spacious area.

**D.** The magnificent center island kitchen shows the abundance of cabinetry, expansive work areas and conveniently located appliances. The 8 cu. ft. refrigerator, built-in microwave, large stove with 22" oven and designer solid surface countertop, provide you with the "best in class" kitchen.



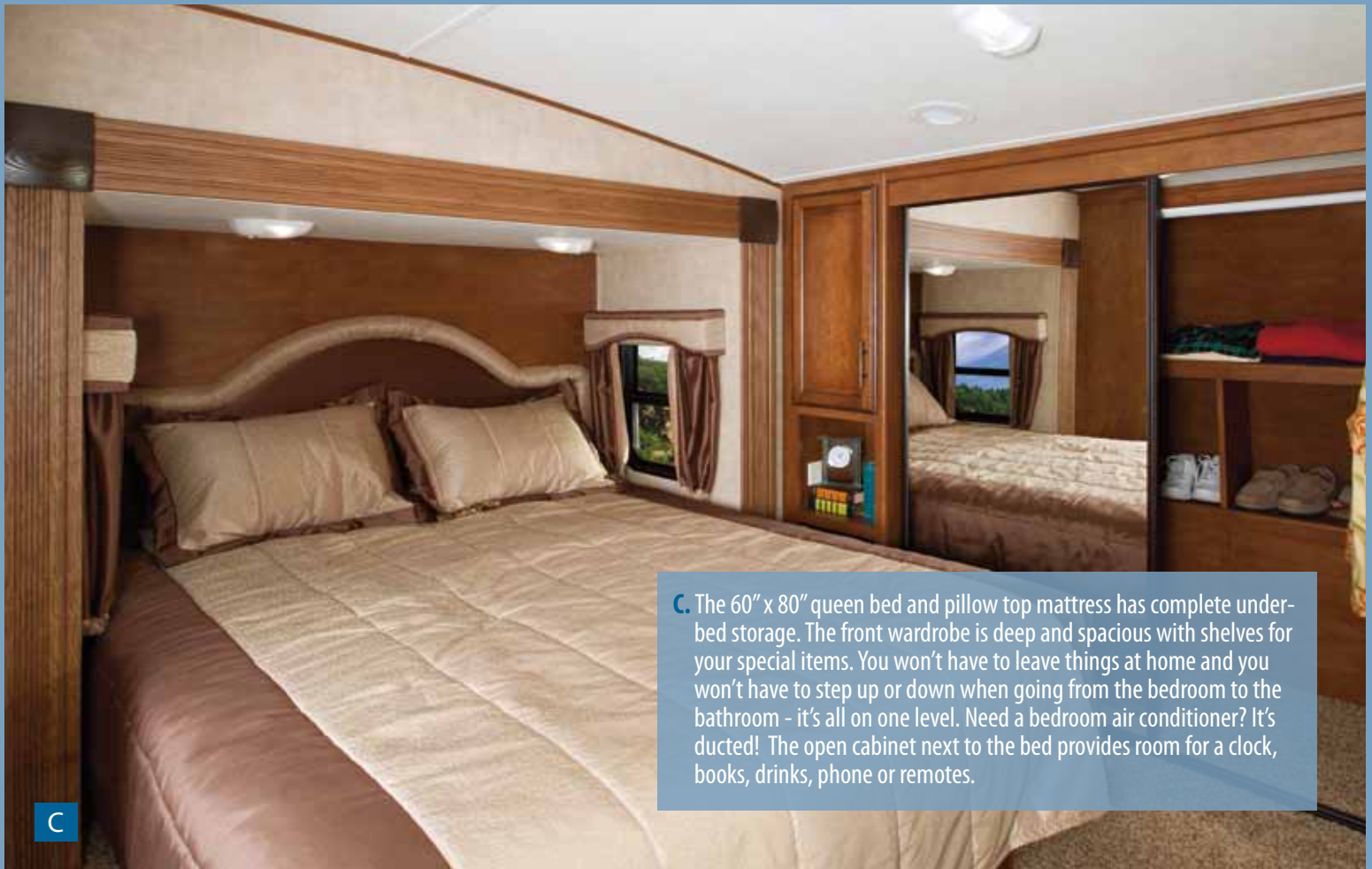
*Raven 3300CK*



■ ■ ■ *Experience the Comfort.*

The flat floor bedroom-bathroom suite is truly a “Best in Class”. Raven’s spacious shower, large residential queen-sized bed, expansive and convenient front storage area, under bed storage and an innovative clothes hamper make this Fiver the Best.

- A. Raven’s Master Suite includes deep vanity drawers and a convenient and accessible laundry hamper (most models.) There is also 32” of floor space between the bed end and vanity for your comfort.
- B. Raven’s bathroom has an oversized deep-molded sink and a large medicine cabinet with a custom 3-bulb decorative light. The large walk-in shower with skylight, linen closet and cabinet above the residential style porcelain stool with a foot flush, make our bathrooms very user friendly.



C. The 60” x 80” queen bed and pillow top mattress has complete under-bed storage. The front wardrobe is deep and spacious with shelves for your special items. You won’t have to leave things at home and you won’t have to step up or down when going from the bedroom to the bathroom - it’s all on one level. Need a bedroom air conditioner? It’s ducted! The open cabinet next to the bed provides room for a clock, books, drinks, phone or remotes.

# FEATURES



■ Storm windows on the screen door. Summer or winter, you can leave your door open.



■ Designer floor covering.



■ Aerodynamic front cap with docking lights.



■ Optional electric rear stabilizers.



■ Nitrogen filled tires are standard on all Raven models. Also standard is a rubberized Equa-Flex Trailair® suspension system. Aluminum wheels are optional.



■ Vented dual battery access.



■ Easily accessible 30 lb. propane gas cylinders with auto changeover, and at the right height. No bending over!

■ Docking stations provide 4-way water fill and winterizer, outside shower, and cable, satellite and phone hook-ups.



■ The 3300CK rear entertainment center will be the hit of the campground and all your neighbors.

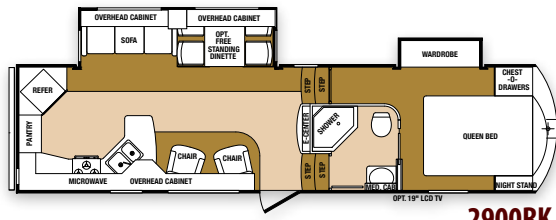


■ Dinette seats lift up for storage of your cards, games, etc.

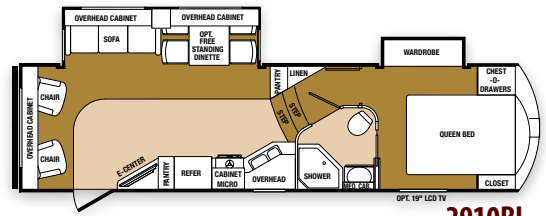


■ Trash can is hidden away (most models.)

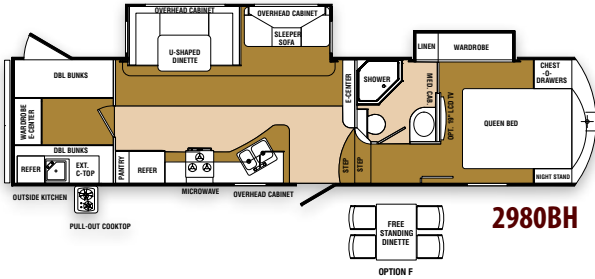
# FIFTH WHEEL FLOORPLANS



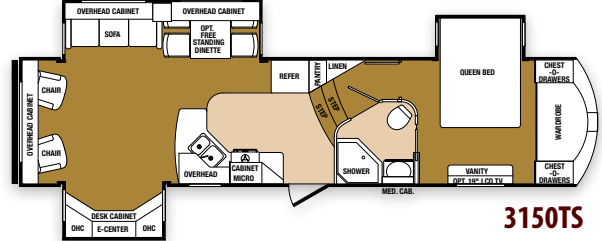
**2900RK**



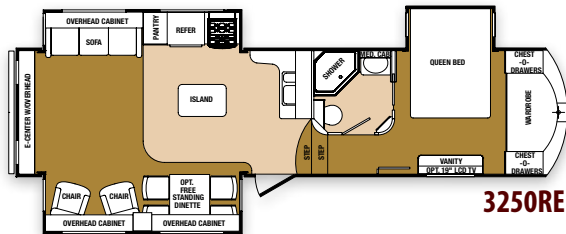
**2910RL**



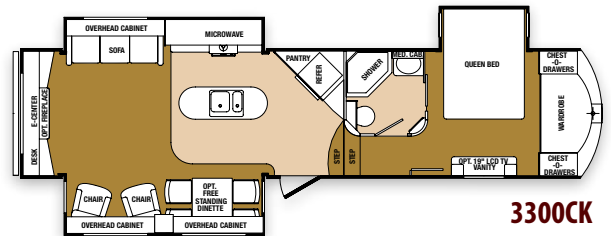
**2980BH**



**3150TS**

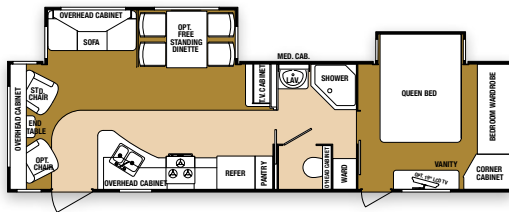


**3250RE**

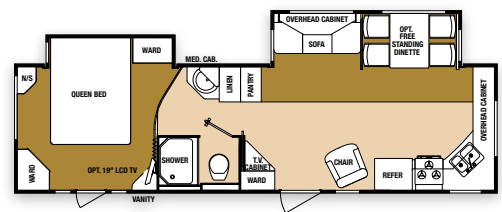


**3300CK**

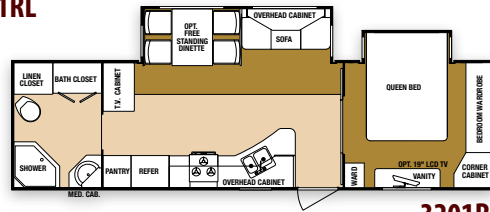
# TRAVEL TRAILER FLOORPLANS



**3101RL**



**3121FK**



**3201RB**

Model	Measurements				Capacities								Features		
	Length Overall*	Width	Exterior Height w/ A/C	Main Slide Room Height	Dry Weight Lbs.	Hitch Weight Lbs.	Net Carrying Capacity	Fresh Water Cap. Gal.	Gray Water Cap./Gal.	Black Water Cap./Gal.	LP Capacity (x2 Tanks)	Water Heater Capacity	Tire Size	Axle Weight Rating (Lbs.)	Furnace (BTU's)
2900RK	TBD	96"	11'11"	75"	TBD	TBD	TBD	56	85	45	30	6	ST225/75D15	6,000	34 BTU
2910RL	32'6"	96"	11'11"	75"	8,800	1,720	3,000	56	85	45	30	6	ST225/75D15	6,000	34 BTU
2980BH	36'6"	96"	11'11"	75"	9,880	2,100	2,460	56	85	45	30	6	ST225/75D15	6,000	34 BTU
3150TS	TBD	96"	11'11"	75"	TBD	TBD	TBD	56	85	45	30	6	ST225/75D15	6,000	34 BTU
3250RE	34'2"	96"	11'11"	75"	9,780	1,800	2,080	56	85	45	30	6	ST225/75R15	6,000	34 BTU
3300CK	35'10"	96"	11'11"	75"	10,060	1,980	2,300	56	85	45	30	6	ST225/75R15	6,000	34 BTU
3101RL	34'8"	96"	11'1"	69"	8,000	980	3,140	50	35	35	30	6	ST225/75R15	5,200	30 BTU
3121FK	33'10"	96"	11'1"	69"	7,760	1,020	3,420	50	70	35	30	6	ST225/75R15	5,200	30 BTU
3201RB	33'10"	96"	11'1"	69"	7,580	1,260	3,840	50	35	35	30	6	ST225/75R15	5,200	30 BTU

\*From center of coupler to rear bumper

# STANDARDS + OPTIONS

## Standard Exterior Features

Radius Tinted Safety Glass Windows	Black Tank Flush System - C	5" Fabricated Rafters on 16" Center
High-End Graphics - L	Power Front Jacks	Aluminum Framed Walls, Floors and Slide-Outs - L
Exterior Stereo Speakers	Trail Air® Equa-Flex Suspension - S	75 Amp Converter (Most Models)
Stabilizers Jacks - C	Rear Ladder - C	R-14 Roof Insulation - C
Power Awning - L	Dual 30# Propane Bottles	R-14 Floor Insulation - C
Custom Color Aerodynamic Front Fiberglass Cap - S	10" I-Beam Frame	R-8 Wall Insulation
Easy Access Battery Compartment - C	30" Radius Entry Door w/Deadbolt	Color Coded Water Lines w/ Brass Fittings
E-Z Lube Hubs - C	Water Heater By-Pass	Attic Vents
15" Tires and Wheels - L	Slam Latch Baggage Doors - S	Extended Hitch Pin
Spare Tire - L	Triple Entry Step	Break Away Switch
Forced Air Heated and Enclosed Holding Tanks and Valves	Flush Floor Electric Slides w/ Individual Switches	Generator Compartment - C
X L Pass-Thru Storage (111 Cu. Ft.)	1 Piece ABS Underbelly	30 Amp Detachable Power Cord
Extra Large Folding Assist Handle at Main Entry Door	Quick Release Pins for Front Jacks	Battery Disconnect - S
Nitrogen Filled Tires for Improved Fuel Economy	1" Micro Laminated Slide-Out Floors w/ Sealtech Coating	Gelcoat Fiberglass - G
Docking Lights on Front Cap - C	Security Light	Storm Window on Screen Door - G
One Piece Seamless Rubber Roof	Exterior Docking Station - FW only - L	

## Standard Interior Features

Main Slides 75" Tall	Bellagio Shades - L	Full Extension Ball-Bearing Drawer Guides w/ Deep Drawers
35k BTU Furnace - C	34" x 34" Neo-Angle Shower w/ Glass Shower Door - C	Kitchen Cabinet Toe Kicks
13500 BTU ducted A/C - C	Porcelain Foot Flush Toilet w/ High Pressure Rim Wash - L	32" LCD Flat Screen TV - L
16.2 Gallon per hour Quick Recovery Water Heater	Towel Bars	Power Vent in Bathroom
Large Kitchen Cabinets	Built-in 1.2 Cu. Ft. Microwave 1100 Watt w/ Turntable - L	Trash Can Storage (Most Models)
Large Kitchen Sink w/ Sink Lids	Hide-A-Bed Sofa w/ Air Comfort Mattress and Sliding Drawer - L	Medicine Cabinet w/ Large Mirror
42" Booth Dinette	2 Deluxe Swivel Rockers - L	Full Access Underbed Storage - 12 Cu. Ft.
High Rise Kitchen Faucet	Shaw® Premium Grade Carpet	Smoke Detector and LP Leak Detector
Power Range Hood w/ Light	Glazed Cherry Cabinet Doors - L	Carbon Monoxide Detector
22" Oven w/ Igniter - L	Oil Rubbed Bronze Lights and Faucets	Electric Slide-Outs w/ Flush Floor
8 Cu. Ft. Refrigerator w/ Electronic Controls - L	Premium Pillow Top Mattress - 60" x 80" Queen - L	Master Suite Floor Level Bathroom to Bedroom
Satellite and Cable Ready	Systems Panel for Centrally Located Switches and Controls - L	Range Cover - C
AM/FM/CD/DVD Home Theatre System - L	Tongue and Groove Plywood on the Main Floor	

## Optional Equipment

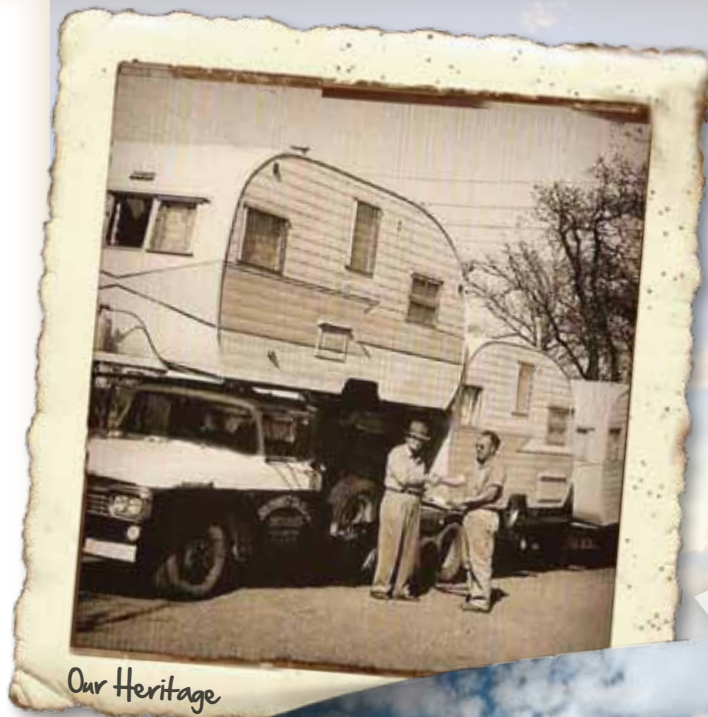
Booth Dinette	50 Amp Service / 2 <sup>nd</sup> A/C Prep	16" Tires and Wheels
Free Standing Dinette and 4 Chairs w/ Storage	Electric Stabilizer Jacks	Thermo-Pane Windows
15,000 BTU Ducted A/C	Designer Solid Surface Kitchen Countertop	10 Gallon Water Heater
13,500 BTU Ducted Bedroom A/C	Memory Foam Premium Mattress	Ceiling Fan
24" LCD Flat Screen Bedroom TV	Deluxe Swivel, Glider Recliners IPO Swivel Rockers	Battery Disconnect
Deluxe Aluminum Wheels	Create-A-Breeze Fan	Generator Prep
Hitch Cover	Fireplace (Requires 50 Amp)	5.5 Generator
Extreme Weather Insulation Package (R-25)	Toy Lock	

L - Luxury Pkg. (M/O) • C - Convenience Pkg. (M/O) • S - Silver Label Pkg. (M/O) • G - Gold Label Pkg. (M/O)

For more, see your Raven dealer for details. Standards, options and specifications are subject to change.

# SUNNYBROOK: BEST OF GOOD OLD DAYS AND TODAY

Few are the lasting memories experienced outside of family. It is said there are no closer bonds, depth of trust, higher laughter and esteem, than that of relatives sharing their common togetherness. You must recall childhood; those trips and destinations mother and father would tease about for weeks ahead. And then the day would finally come! You were off, just the family and all creation's time to enjoy life! Such warm memories mustn't keep their distance. There's a place called SunnyBrook, where witnesses swear can revive the great times and restore trust in the good old-fashioned "doing things right" way. From coast to coast, SunnyBrook 5th Wheels & Travel Trailers have become the favorite gathering place for exciting family times. Folks choose SunnyBrook brands because they're made to hold up. SunnyBrook philosophy is taken from the Golden Rule; make it for the customer just like I'd do it for myself. The end result speaks for itself. You worry about having fun and SunnyBrook does the rest. It bids one to ponder; Perhaps your "good old days" are yet to come?



*Our Heritage*



*Raven by SunnyBrook Today*



## **Winnebago Of Indiana, LLC**

201 14th Street | P.O. Box 2001  
Middlebury, IN 46540 | (574) 825-5250  
[www.sunnybrookrv.com](http://www.sunnybrookrv.com)

*your Raven Dealer:*

Tow Vehicle Disclaimer. CAUTION: Owners of Winnebago Of Indiana, LLC recreational vehicles are solely responsible for the selection and proper use of tow vehicles. All customers should consult with a motor vehicle manufacturer or their dealer concerning the purchase and use of suitable tow vehicles for Winnebago Of Indiana, LLC products. Winnebago Of Indiana, LLC disclaims any liability or damages suffered as a result of the selection, operation, use or misuse of a tow vehicle. WINNEBAGO OF INDIANA, LLC'S LIMITED WARRANTY DOES NOT COVER DAMAGE TO THE RECREATIONAL VEHICLE OR THE TOW VEHICLE AS A RESULT OF THE SELECTION, OPERATION, USE OR MISUSE OF THE TOW VEHICLE.

All illustrations and specifications contained in this literature are based on the latest product information available at the time of printing. Winnebago Of Indiana, LLC reserves the right to make changes to colors, materials, specifications and pricing without notice or obligation. Photography may show optional equipment available at an additional cost. Items used as props in photography are not part of the packages. All liquid capacities and weights are approximate and dimensions are nominal. Winnebago reserves the right to make changes and improvements without incorporating these changes into similar models produced at an earlier date. Consult your local, authorized Raven dealer for the latest information and changes. Winnebago Of Indiana, LLC continues to be a member in good standing of the RVIA.