

2012  
*Sunny Brook*  
SUNSET CREEK



You'll Love The Difference







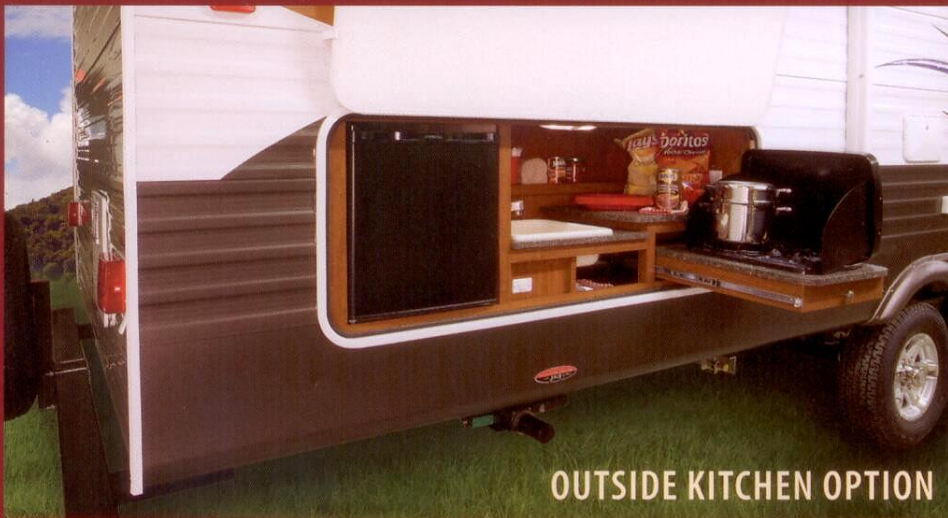


■ ■ ■ *Experience the Difference.*

It's taken years of dedication and hard work to get here. Now let us help you enjoy it! We make a travel trailer the same way you would - by hand with meticulous attention to every detail, using only the highest quality components and materials...and providing first rate service and support. We're sure you've heard that story before, but study our product and reputation then allow us to show you the difference.

**340 BHDS SHOWN IN ESPRESSO DECOR**





## OUTSIDE KITCHEN OPTION

This convenient outside kitchen provides your family with the capabilities of your inside kitchen while everyone is outside playing. We feature a two burner pull-out cook top, a great refrigerator and a sink providing for quick clean up.

### ■ ■ ■ *Experience the Convenience.*

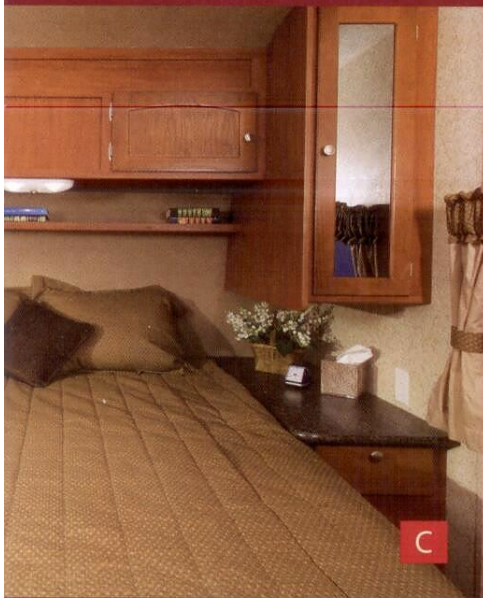
- A. The spacious kitchen in our new 278RBS is truly a sight to behold. Look at the large, deep pantry, double door refrigerator and double sink that allows you to take advantage of the expansive work area. Your range has a full size oven for all that home cooking and a large microwave for those quick meals. What else could you have - storage galore with all those cabinets and drawers.
- B. The comfortable sofa converts into a hide-a-bed for that extra sleeping area neighborhood kids require. The new "U" shaped dinette is a full 84" and can feed an army. Whether it's a bunch of kids eating and playing games or two friendly couples sharing an intimate dinner, you can enjoy the ability to spread out.
- C. The front bedroom is truly elegant in every aspect. A comfortable queen bed for you to relax, shirt closets and nightstands are on each side and compliment this intimate room. It even features a TV that rotates in from the living room.
- D. The rear bunk room is the pièce de résistance featuring two full 80" bunks and two additional bunks in the large slide-out. Shown with optional cube furniture. Storage and cabinets beyond imagination in this beautiful "Kid's Room" sets it above all competitors.



B











*Experience the Comfort.*

## NEW BATHROOM OPTION

Never before have you seen a bathroom suite like the one in our new 278RBS. She will instantly fall in love with this when she walks into her private bathroom away from home. We'll bet her first exclamation will be "WOW!!"

- A. This bathroom includes "His and Hers" closet with full sized, wall-to-wall sliding mirror doors. Inside you'll find room for all of your clothes and shelves for your shoes, hats and other "unmentionables".
- B. Everything you would expect to find in a great bathroom is here, plus more. You'll see the large shower with a glass door and overhead skylight. An oversized medicine cabinet, porcelain foot flush toilet and, best of all, it's built by the people you've trusted most over the years.





# FEATURES



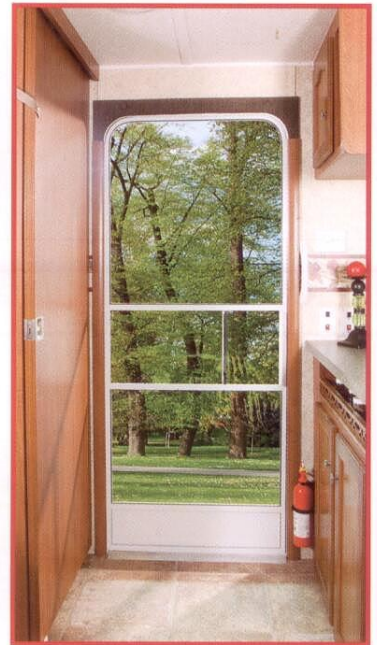
■ This movable TV eliminates the need for additional units and is yet another innovation of Sunset Creek. The convenient swivel TV in our entertainment center allows view-ability from the kitchen, living areas and/or bedroom.



■ All Sunset Creek Travel Trailers offer a three-step entry way as standard equipment.



■ Tires on all Sunset Creek models are filled with nitrogen. It provides improved fuel economy, tire life, braking and handling, and safety.



■ Main exit doors now have a sliding "clear pane" covering the door handle/lock area providing complete outside visibility - no longer do you have that solid color covering. A "Poodle Panel" is at the bottom of the door to keep your pets from scratching that nice screen door.



■ Sunset Creek features a bike door giving you easy access to bikes and other stored items.



■ All Sunset Creek coaches have standard Beauflor® - a new flooring dimension. It is resistant to mold & mildew, cold cracking, slipping and stains. The surface is an engineered composite that is also highly resistant to tears, rips and gouges. The best of all worlds in a Sunset Creek!



■ Other brands come with cheap plastic toilets. Sunset Creeks have porcelain foot-flush toilets standard!



■ Have you ever seen a rock on the road or in a campground? We have too... Sunset Creek's diamond plate stone guard adds durability to protect your investment!



■ Bathrooms feature tub surround, skylight, power vent and opt./std. glass shower door.

■ All Sunset Creek cabinet frames are screwed together. This provides a stronger product than stapling.

■ Extend your camping season with optional heated and enclosed holding tanks.

■ Super Lube™ axles are higher quality than most. They feature lower maintenance and more durability.

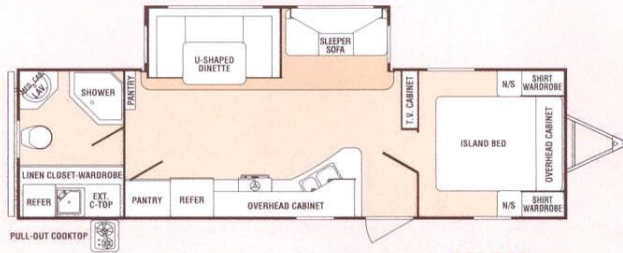
■ Individual jack stands provide an easy, quick and maintenance free stabilizing system for every Sunset Creek... standard.

■ Externally accessible propane gas port is standard and allows outdoor hookups for BBQ and Tailgating parties.

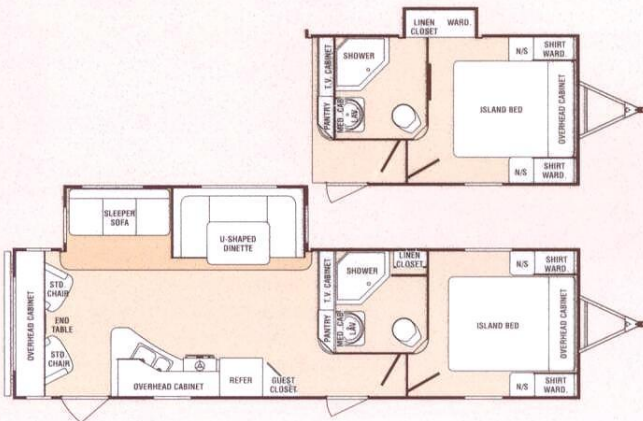
■ All water lines are color coded and use solid brass fittings at every joint.



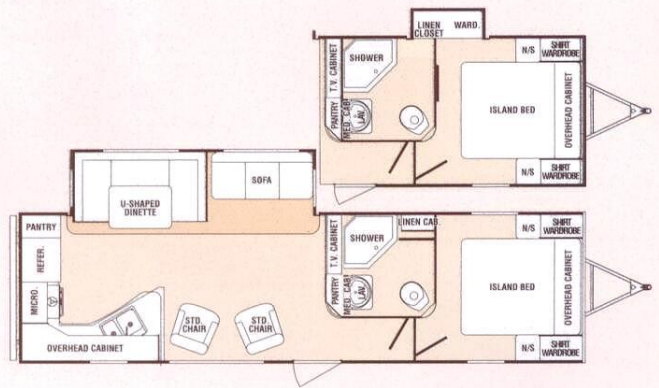
# SUNSET CREEK FLOORPLANS\*



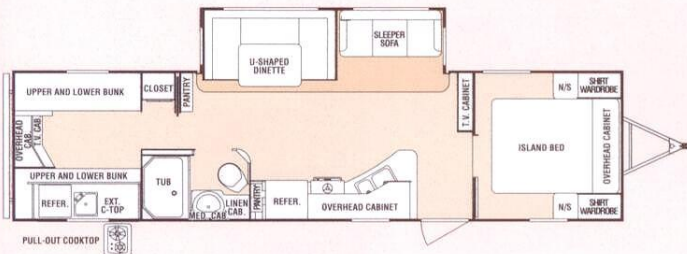
278 RBS



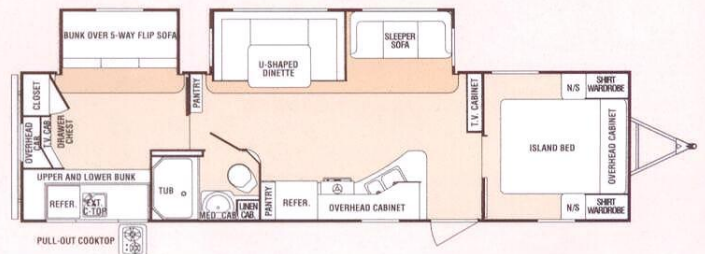
292 RLS



299 RKS



330 BHS



340 BHDS



**Sunset Creek**  
Travel Trailers

\*SUNSET CREEK CLASSIC PACKAGE AVAILABLE ON THE ABOVE FLOORPLANS



# STANDARDS + OPTIONS

## Camp In Comfort Package

|                                      |                                     |                          |   |
|--------------------------------------|-------------------------------------|--------------------------|---|
| 82" Interior Height                  | 71" Slide-Out Height                | Super Lube™ Axles        | Queen Bed /80" Bunk Mattress                |
| 84" U-Shaped Dinette                 | 2 Swivel Rockers (Where Applicable) | Double Door Refrigerator | Big Tub - 30" x 40" Tub Or Neo-Angle Shower |
| Enclosed Fresh Water Tank            | Stabilizer Jacks                    | Radial Tires             | Range With Oven                             |
| Tub Surround                         | Microwave                           | 30# LP Bottles           | 13.5 Ducted A/C                             |
| 6 Gal. DSI Gas/Electric Water Heater | Awning                              | TV Antenna With Booster  | AM/FM/CD/DVD - Interior/ Exterior Speakers  |
| Cable TV Hookup                      | Tinted Safety Glass Windows         | Walk-On Roof             | Outside Shower                              |

## Sunset Creek Classic Package (Optional)

|                                   |   |                     |
|-----------------------------------|---|---------------------|
| 6 Sided Aluminum Framed Structure | Raised Panel Cabinet Doors In Kitchen & Living Room | Fiberglass Exterior |
|-----------------------------------|---|---------------------|

## Options

|   |   |  |   |
|---|---|--|---|
| Free Standing Dinette & 4 Chairs  | Hide-A-Bed Sofa                               | Cube Furniture IPO Bunk (340 BHDS)                     | Everpedic Memory Foam Mattress                |
| 15.0M BTU A/C - Upgrade   | 26" LCD TV                                    | Glass Shower Door (Std. on 278 RBS, 292 RLS & 299 RKS) | Outside Kitchen (278 RBS, 330 BHS & 340 BHDS) |
| Power Package - Includes Power Front Jack, Elec. Stab. Jacks & Power Awning | Bedroom Wardrobe Slideout (292 RLS & 299 RKS) | 15" Deluxe Aluminum Wheels                             | Spare Tire & Carrier                          |
| Roof Ladder   | LP Bottle Cover                               | 12 Volt Power Awning                                   | Enclosed Underbelly                           |

For more, see your Sunset Creek dealer for details. Standards, options and specifications are subject to change.

# SPECIFICATIONS

| Model    | Measurements     |                   |                |                 |              | Capacities               |                          |           |                       |                       |                      |               | Features     |             |              |
|----------|------------------|-------------------|----------------|-----------------|--------------|--------------------------|--------------------------|-----------|-----------------------|-----------------------|----------------------|---------------|--------------|-------------|--------------|
|          | Exterior Length* | Exterior Height** | Exterior Width | Interior Height | Hitch Height | Dry Hitch Weight/Lbs.*** | Dry Gross Weight/Lbs.*** | GVWR/Lbs. | Fresh Water Cap./Gal. | Black Water Cap./Gal. | Gray Water Cap./Gal. | Sleeping Cap. | Tire Size    | Awning Size | Furnace Size |
| 278 RBS  | 32' 11"          | 11' 5"            | 8' 0"          | 6' 10"          | 21-1/2"      | 1060                     | 7060                     | 10000     | 56                    | 41                    | 41                   | 6             | ST225/75R15D | 17'         | 30M BTU      |
| 292 RLS  | 33' 8"           | 11' 5"            | 8' 0"          | 6' 10"          | 21-1/2"      | TBD                      | TBD                      | 10000     | 56                    | 41                    | 41                   | 6             | ST225/75R15D | 20'         | 30M BTU      |
| 299 RKS  | 33' 8"           | 11' 5"            | 8' 0"          | 6' 10"          | 21-1/2"      | TBD                      | TBD                      | 10000     | 56                    | 41                    | 82                   | 6             | ST225/75R15D | 20'         | 30M BTU      |
| 330 BHS  | 36' 0"           | 11' 5"            | 8' 0"          | 6' 10"          | 21-1/2"      | TBD                      | TBD                      | 10000     | 56                    | 41                    | 41                   | 10            | ST225/75R15D | 20'         | 30M BTU      |
| 340 BHDS | 36' 0"           | 11' 5"            | 8' 0"          | 6' 10"          | 21-1/2"      | 880                      | 7760                     | 10000     | 56                    | 41                    | 41                   | 12            | ST225/75R15D | 20'         | 30M BTU      |

\*From center of coupler to rear bumper \*\*Includes AC on roof \*\*\*Not including options



# SUNSET CREEK FLOORPLANS



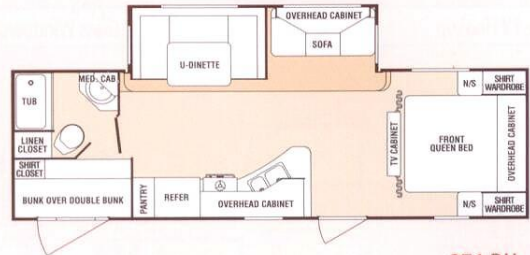
255 RK



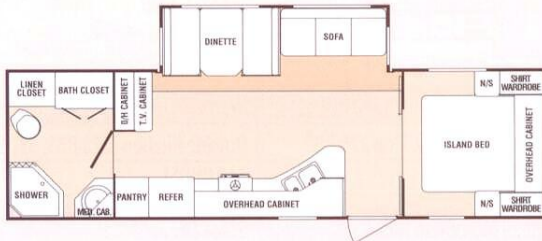
267 RL



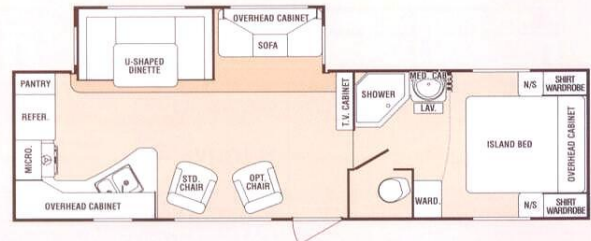
270 BH



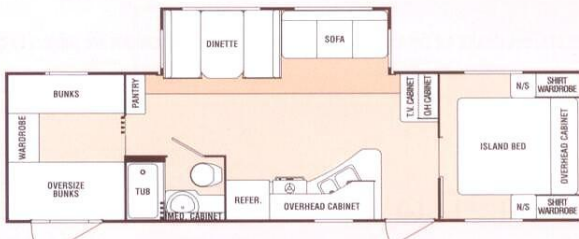
271 BH



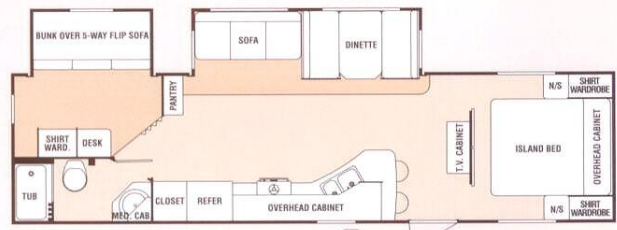
279 RB



297 SL



298 BH



312 BHD



Outside Kitchen  
Option: OK

SWING-OUT COOKTOP

SECOND ENTRY DOOR  
OPTION S.E.D.



## Sunset Creek Sport Travel Trailers



# STANDARDS + OPTIONS

## Sunset Creek Sport Package

|                          |                                    |                             |                          |
|--------------------------|------------------------------------|-----------------------------|--------------------------|
| Deluxe Graphics Package  | Bedspread                          | Cable TV Hookup             | Carbon Monoxide Detector |
| Double Door Refrigerator | LP Leak Detector                   | Mini Blinds                 | 30# LP Bottles           |
| Bedroom TV Hookup        | 2 - Swivel Rockers (267RL & 297SL) | Solid Master Bedroom Door   | TV Antenna With Booster  |
| Outside Shower           | Water Heater By-Pass               | Tinted Safety Glass Windows | Radius Baggage Doors     |
| Radial Tires             | Super Lube™ Axles                  | Enclosed Fresh Water Tank   |                          |

## Camping Time Package

|                  |                               |  |
|------------------|-------------------------------|--|
| 13.5 Ducted A/C  | 6 Gallon DSI Gas Water Heater | AM/FM/CD/DVD Player - Interior/Exterior Speakers |
| Awning           | Microwave                     | Skylight Over Tub                                |
| Stabilizer Jacks | Walk-On Roof                  | Range With Oven                                  |

## Options

|   |                               |                                    |  |
|---|-------------------------------|------------------------------------|--|
| Hide-A-Bed Sofa (N/A On 270 BH)   | 15.0M BTU A/C - Upgrade       | Sliding Patio Door (312 BHDS Only) | Glass Shower Door (STD. on 255 RK, 279 RB, & 297 SL) |
| Second Entry Door (312 BHDS Only)   | Outdoor Kitchen (298 BH Only) | Overhead Cabinet In Slide-Out      | Tub Surround   |
| Power Package - Includes Power Front Jack, Elec. Stab. Jacks & Power Awning | LP Bottle Cover               | 14" Alum. Wheels (270 BH Only)     | 15" Alum. Wheels (N/A On 270 BH)                     |
| Spare Tire & Carrier  |                               |                                    |  |

For more, see your Sunset Creek dealer for details. Standards, options and specifications are subject to change.

# SPECIFICATIONS

| Model   | Measurements     |                   |                |                 |              | Capacities               |                          |           |                       |                       |                      | Features      |              |             |              |
|---------|------------------|-------------------|----------------|-----------------|--------------|--------------------------|--------------------------|-----------|-----------------------|-----------------------|----------------------|---------------|--------------|-------------|--------------|
|         | Exterior Length* | Exterior Height** | Exterior Width | Interior Height | Hitch Height | Dry Hitch Weight/Lbs.*** | Dry Gross Weight/Lbs.*** | GVWR/Lbs. | Fresh Water Cap./Gal. | Black Water Cap./Gal. | Gray Water Cap./Gal. | Sleeping Cap. | Tire Size    | Awning Size | Furnace Size |
| 255 RK  | 28' 5"           | 11' 1"            | 8' 0"          | 6' 8"           | 21-1/2"      | 760                      | 5,780                    | 10,000    | 56                    | 41                    | 76                   | 6             | ST225/75R15D | 16'         | 25M BTU      |
| 267 RL  | 29' 8"           | 11' 1"            | 8' 0"          | 6' 8"           | 21-1/2"      | 737                      | 5,938                    | 10,000    | 56                    | 41                    | 41                   | 6             | ST225/75R15D | 16'         | 25M BTU      |
| 270 BH  | 28' 3"           | 10' 11"           | 8' 0"          | 6' 8"           | 19-1/4"      | 676                      | 4,830                    | 7,000     | 60                    | 41                    | 41                   | 8             | ST205/75R14C | 19'         | 25M BTU      |
| 271 BH  | 30' 7"           | 11' 1"            | 8' 0"          | 6' 8"           | 21-1/2"      | 801                      | 5,950                    | 10,000    | 56                    | 41                    | 41                   | 8             | ST225/75R15D | 20'         | 30M BTU      |
| 279 RB  | 31' 10"          | 11' 1"            | 8' 0"          | 6' 8"           | 21-1/2"      | 851                      | 6,241                    | 10,000    | 56                    | 41                    | 41                   | 6             | ST225/75R15D | 17'         | 25M BTU      |
| 297 SL  | 33' 8"           | 11' 1"            | 8' 0"          | 6' 8"           | 21-1/2"      | 820                      | 6,366                    | 10,000    | 56                    | 41                    | 76                   | 6             | ST225/75R15D | 16'         | 30M BTU      |
| 298 BH  | 33' 6"           | 11' 1"            | 8' 0"          | 6' 8"           | 21-1/2"      | 902                      | 6,615                    | 10,000    | 56                    | 41                    | 41                   | 10            | ST225/75R15D | 16'         | 25M BTU      |
| 312 BHD | 34' 11"          | 11' 1"            | 8' 0"          | 6' 8"           | 21-1/2"      | 990                      | 7,150                    | 10,000    | 56                    | 41                    | 76                   | 9             | ST225/75R15D | 16'         | 30M BTU      |

\*From center of coupler to rear bumper \*\*Includes AC on roof \*\*\*Not including options



# SUNNYBROOK: BEST OF GOOD OLD DAYS AND TODAY

Few are the lasting memories experienced outside of family. It is said there are no closer bonds, depth of trust, higher laughter and esteem, than that of relatives sharing their common togetherness. You must recall childhood; those trips and destinations mother and father would tease about for weeks ahead. And then the day would finally come! You were off, just the family and all creation's time to enjoy life! Such warm memories mustn't keep their distance. There's a place called SunnyBrook, where witnesses swear can revive the great times and restore trust in the good old-fashioned "doing things right" way. From coast to coast, SunnyBrook trailers have become the favorite gathering place for exciting family times. Folks choose SunnyBrook brands because they're made to hold up. SunnyBrook philosophy is taken from the Golden Rule; make it for the customer just like I'd do it for myself. The end result speaks for itself. You worry about having fun and SunnyBrook does the rest. It bids one to ponder; Perhaps your "good old days" are yet to come?



*Our Heritage*



*SunnyBrook Today*

**SunnyBrook**  
SUNSET CREEK



TOWABLES

**Winnebago Of Indiana, LLC**

201 14th Street | P.O. Box 2001

Middlebury, IN 46540 | (574) 825-5250

[www.sunnybrookrv.com](http://www.sunnybrookrv.com)

*your* Sunset Creek Dealer:

CENTRE DE LA ROULOTTE 1444 INC.

14 303, BOUL. LABELLE

ST-JANVIER, QC J7J1M2

TÉL. : (450) 430-1444

Tow Vehicle Disclaimer. CAUTION: Owners of Winnebago Of Indiana, LLC recreational vehicles are solely responsible for the selection and proper use of tow vehicles. All customers should consult with a motor vehicle manufacturer or their dealer concerning the purchase and use of suitable tow vehicles for Winnebago Of Indiana, LLC products. Winnebago Of Indiana, LLC disclaims any liability or damages suffered as a result of the selection, operation, use or misuse of a tow vehicle. WINNEBAGO OF INDIANA, LLC'S LIMITED WARRANTY DOES NOT COVER DAMAGE TO THE RECREATIONAL VEHICLE OR THE TOW VEHICLE AS A RESULT OF THE SELECTION, OPERATION, USE OR MISUSE OF THE TOW VEHICLE.

All illustrations and specifications contained in this literature are based on the latest product information available at the time of printing. Winnebago Of Indiana, LLC reserves the right to make changes to colors, materials, specifications and pricing without notice or obligation. Photography may show optional equipment available at an additional cost. Items used as props in photography are not part of the packages. All liquid capacities and weights are approximate and dimensions are nominal. Winnebago reserves the right to make changes and improvements without incorporating these changes into similar models produced at an earlier date. Consult your local, authorized Sunset Creek dealer for the latest information and changes. Winnebago Of Indiana, LLC continues to be a member in good standing of the RVIA.

2011 Winnebago Of Indiana, LLC

Litho USA

W-25-006