

CHRYSLER PACIFICA





INTRO / DESIGN
6

EFFICIENCY
14

INTERIOR
16

PACIFICA HYBRID
24

SAFETY & SECURITY
34

TECHNOLOGY / ENTERTAINMENT
38

PERFORMANCE
46

SPECIFICATIONS
48

CHRYSLER



2019 PACIFICA





EXPERIENCES THAT

MOVE US

CHRYSLER PACIFICA

BUILDING OUR BEST

As an extension of caring for your family, Pacifica stands for what matters: innovative fuel and hybrid powertrains, versatile seating* and storage, smart technology, stunning good looks and an IIHS 2018 Top Safety Pick when equipped with optional front crash prevention and specific headlights. It passes the modern family test with flying colors — and no surprise, it's been named Family Car of the Year by Cars.com.[†] Because what matters most to you, matters to the makers of Chrysler Pacifica.



2018 IIHS TOP SAFETY PICK

When equipped with optional front crash prevention and specific headlights.





**CHRYSLER PACIFICA:
NO-COMPROMISES MINIVAN**

FROM THE INGENUOUS CONFIGURATIONS TO THE INTUITIVE CONTROLS AND TECHNOLOGY, EVERY DETAIL ADDS UP TO MAKING PACIFICA THE MOST FAMILY-FRIENDLY MINIVAN IN ITS CLASS?



A BRIGHT SPOT IN THE DROP-OFF LANE

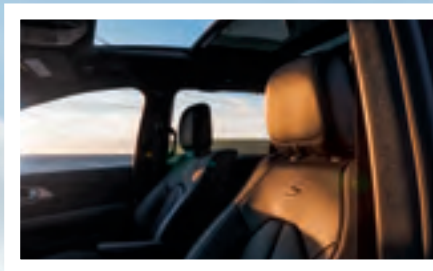
Displaying a sleek, athletic stance, the ultimate family vehicle is designed to feel like the family room you've always wanted. The spacious available seating for eight,* in-floor seating and storage, intuitive 8.4-inch touchscreen communication, automatic hands-free sliding doors and best-in-class² family entertainment system are just part of the conveniences that will prompt you to start looking for reasons to run errands and plan more road trips. Attributes like expansive side windows and an available tri-pane panoramic sunroof let in an abundance of natural light, creating a breath of fresh air in the open interior.





PACIFICA S APPEARANCE PACKAGE

WRAPPED IN ATTITUDE



A tougher touch of bold styling — the S Appearance Package, available on Pacifica and Pacifica Hybrid, offers exterior and interior features that speak to your brazen side:

Unique 18- or 20-inch Black Noise wheels

Black Stow 'n Place® roof rack (available)

Black Chrysler grille wing badge and S badge

Black grille surround

Leather-wrapped steering wheel

Sporty Black leather S embroidered seats





GAS-MODEL POWERTRAIN

The Pacifica includes a powerful yet efficient powertrain with the standard 3.6L Pentastar® V6 engine for an impressive 287 horsepower and 262 lb-ft of torque. The standard 9-speed automatic transmission is a prime factor of the driving dynamics and unsurpassed highway fuel economy in its class.³

BUILT-IN QUIET TIME

The sculpted shape along with design details of Pacifica offer advanced aerodynamics, while the enhanced low-sound exhaust and motor, Active Noise Cancellation technology, laminated window glass and triple-seal doors contribute to a peacefully quiet ride.

THE BEST

ROAD-TRIP MINIVAN

IN ITS CLASS²

*19 CITY / 28 HIGHWAY MPG**

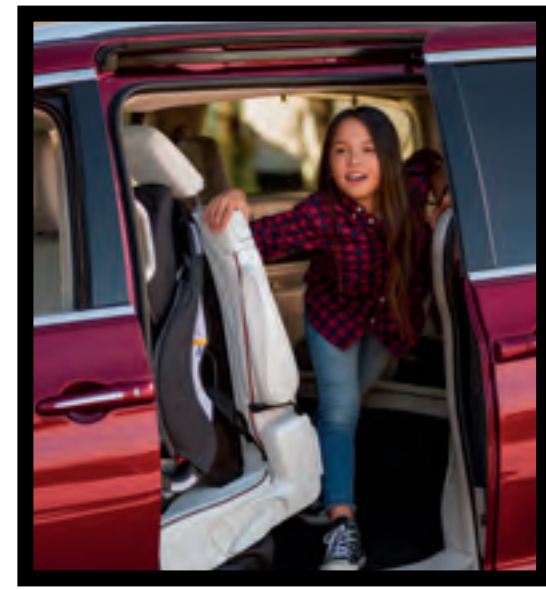
*Based on 2018 model-year EPA-estimated fuel economy ratings: 18 city / 28 hwy mpg (3.6L V6 with 9-speed automatic transmission); 19 city / 28 hwy mpg (3.6L V6 with 9-speed automatic transmission with Engine Stop/Start (ESS) technology). Actual mileage may vary.





EASY DOES IT

With the available second-row Easy Tilt seating, passengers can easily climb in and out of the third row. At the simple pull of a lever, the second-row seat smoothly shifts forward without having to push or pull it, even with an unoccupied child seat in place.



NO BENCH-PRESS TRAINING NEEDED WITH THE AVAILABLE CLASS-EXCLUSIVE⁴ STOW 'N GO[®] SEATING AND STORAGE

Designed to be used without having to remove the seats, the available class-exclusive⁴ Stow 'n Go seating and storage system is the key to smooth transitions. With the available Auto Advance 'n Return feature, stowing gear or the seats in the second-row bins is as simple as pressing a button to slide the front seats forward, allowing easy access to the in-floor bin.



YOUR VEHICLE IS AN EXTENSION OF YOUR LIFESTYLE.





THE TECHNICALLY ADVANCED

FAMILY ANNEX



DRIVER APPRECIATION: HANDLED

The premium, ergonomically designed leather-trimmed seats are available heated and ventilated while they support contours of the body along with providing generous leg room. The intuitive interior includes the standard Rotary E-shift dial in the center stack and available open center console with storage. The available 12-way adjustable driver seat with four-way power lumbar support and memory settings, available heated steering wheel and keyless entry with push-button start make Pacifica built to appreciate the driver.



THE SMART LIFE IS

VERSATILE



Available hands-free sliding doors and liftgate.



Easy cleanup with the available Stow 'n Vac® vacuum.

ON AND AT YOUR SIDE Your essentials may be many, but Pacifica makes getting settled a smooth operation. A simple kick of the foot opens the vehicle with the available class-exclusive² hands-free sliding doors with hands-free liftgate. You'll stay organized and tidy with clever storage like cup holders, pockets and sliding drawers, while a purse or wallet finds the perfect landing spot next to you without getting in the way. The available center console and stack drawer allow easy access to smaller items, keeping your elbow room clear. Adjusting rear seats to an upright position and filling in-floor bins with all your gear keeps everything in place and in reach.

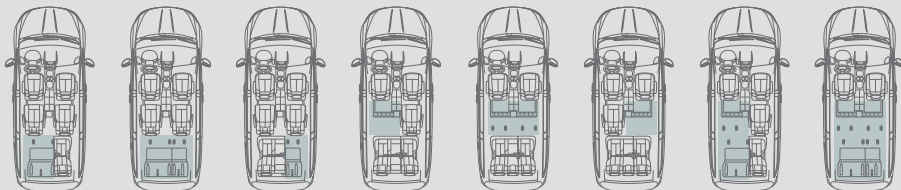




OVERACHIEVEMENT:
AVAILABLE SEATING FOR 8*



243 different seating and storage setups with the available seating for eight*
 • After stowing seats in the floor, the flat cargo space can hold a stack of 4x8' boards
 • In-floor bins provide storage organization
 • The available seating for eight* includes an easily removable⁴ second-row center seat
 • The eighth seat* adds an armrest, cup holder and bin when the seatback is folded down
 • The eighth seat* increases the LATCH-installed child seats to five





CHRYSLER PACIFICA HYBRID

AMERICA'S FIRST-EVER HYBRID MINIVAN

Aftermarket Mopar® Level II charger shown.

THE BEST OF BOTH WORLDS KEEPS YOU

HUMMING ALONG



**WORRY-FREE
CONVENIENCE
WITHOUT
COMPROMISE**

Now you can drive where you want, when you want without any of the range anxiety. The Chrysler Pacifica Hybrid seamlessly switches from electric to gas for greater peace of mind. From increasing driving range and saving fuel while reducing emissions without compromising on versatility and space, this hybrid goes further to help your bottom line.

THE BEST ROUTE
FOR EVERYDAY ROUTINES



TAKE CHARGE OF YOUR RESOURCES

Along with increased driving range, reduced emissions and using less fuel, the Pacifica Hybrid model is eligible for a healthy incentive* When you purchase a Pacifica Hybrid, you may qualify for up to a \$7,500 federal tax credit,⁶ as well as additional state and local credits thanks to the 16kWh battery. The battery includes a 10-Year/150,000-Mile⁷ or a 10-Year/100,000-Mile Limited Warranty,⁷ depending on your residential location.



UP TO \$7,500 FEDERAL TAX CREDIT⁶
ELIGIBLE FOR STATE HOV LANE STICKER¹



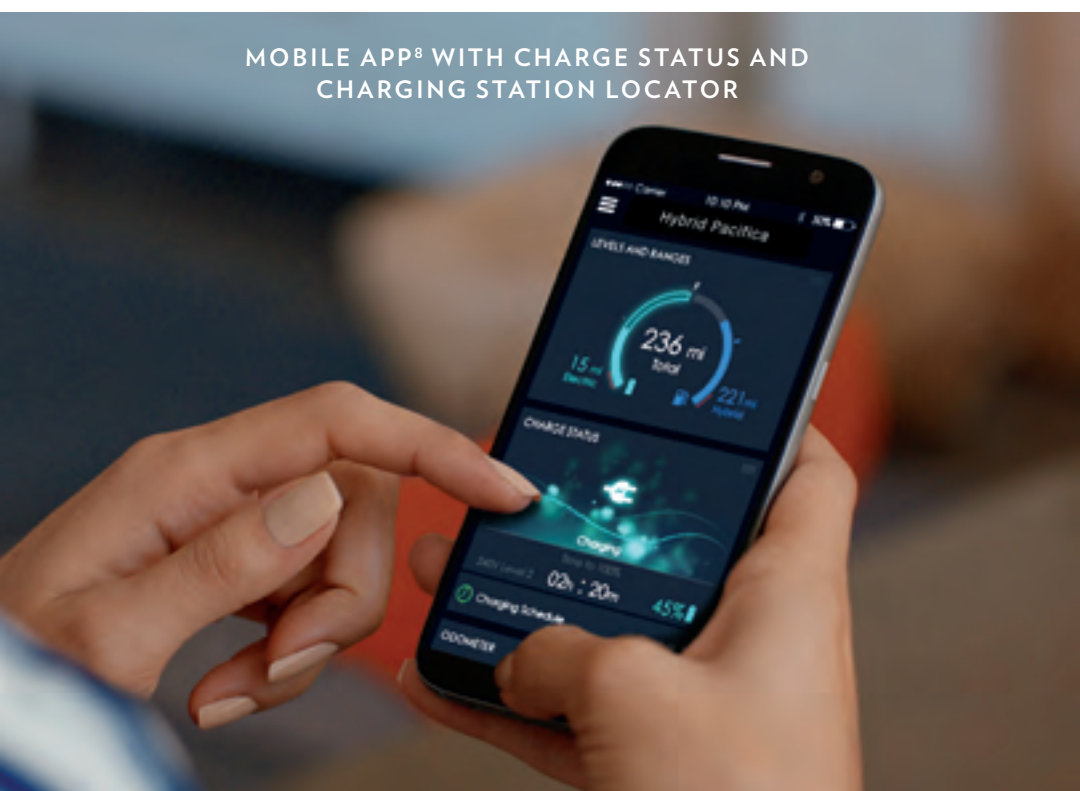
⁶State and local incentives may also apply. ¹Offered by a third party and subject to change without notice. 29



THE MOST TECHNOLOGICALLY ADVANCED
7-PASSENGER HYBRID⁹



MOBILE APP⁸ WITH CHARGE STATUS AND
CHARGING STATION LOCATOR



Monitoring the energy input and output is so simple, you'll never second-guess your power source. The standard Uconnect[®] 8.4-inch touchscreen system with available navigation and voice command includes Hybrid Electric Pages providing vehicle information screens for Power Flow, Driving History and Charge Scheduling.

Enjoy the versatile amenities Pacifica is known for, like spacious seating, available hands-free sliding doors and liftgate and the incomparable Uconnect Theater with built-in games and apps. Hybrid screens, available Ice Blue stitching and accents reflect its environmental purpose from the inside out.

The convenient dash-top 5-point charging indicator is visible at a glance from outside the vehicle, making it easy to identify the battery's charge level.



POWERFUL EFFICIENCY:

+ *DRIVING* *RANGE*

The available 240-volt Mopar® Level II charger¹⁰ lets you fully charge your Hybrid in as little as two hours.



The 520-mile combined electric and fuel range¹¹ makes driving farther while reducing your carbon footprint a perfect fit for the eco-conscious and cost-efficient family. Pacifica Hybrid offers an astounding 82 MPGe¹² without compromising the space and seating you need. The ability to travel 32 miles¹³ without gas allows you to make fewer stops at the pump. The hybrid system automatically switches over to using gas when the battery's charge is depleted.



The charging port and fuel-filler door are both conveniently positioned on the driver's side, so remembering to power up is barely a second thought.

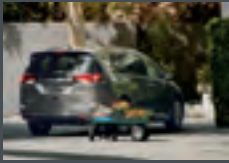
**520-MILE TOTAL DRIVING RANGE¹¹
WITH 32-MILE ELECTRIC DRIVING RANGE¹³**





SAFETY & SECURITY GOES ABOVE AND

BEYOND



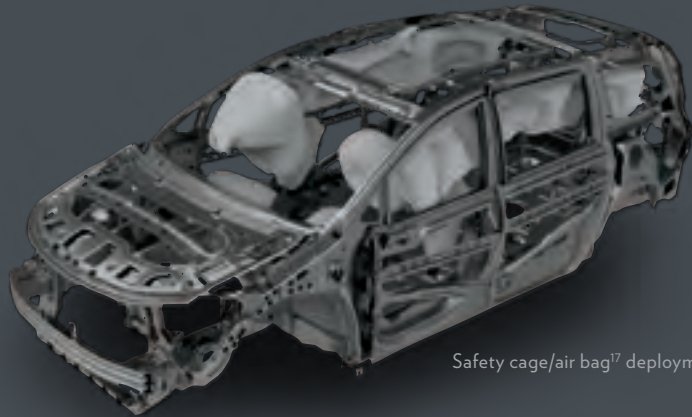
360° Surround-View Camera¹⁴ Whether parking, changing lanes or simply backing out of your driveway, the available full-surround camera views — with visual and audio alerts — provide a display of your vehicle surroundings in the Uconnect[®] touchscreen.



Blind Spot Monitoring¹⁵ Sees Where You Can't
This standard system monitors rear blind zones on either side of your vehicle via radar to alert you of vehicles in close proximity. Includes Rear Cross-Path Detection¹⁴ to alert you of vehicles and objects in your path when driving in Reverse.



Available Full-Speed Forward Collision Warning with Active Braking¹⁶
Detects whether the vehicle is approaching another vehicle or large obstacle too rapidly. It warns and assists the driver in avoiding a potential impact, allowing the ability to adjust the sensitivity and turn brake support on or off.



Safety cage/air bag¹⁷ deployment



Available Adaptive Cruise Control with Stop and Go¹⁸
Identifies forward-path vehicles to help maintain a set distance at cruising speeds. It maintains one of four preset distances between 0 mph and highway speeds, braking up to a complete stop until driver manually applies the brakes.



Available LaneSense[®] Lane Departure Warning with Lane Keep Assist¹⁹
Determines vehicle position within lane lines, displaying a cluster warning if you've crossed either line without using a turn signal. The system automatically aligns to the proper position if the drift is not driver-corrected.



Available ParkSense[®] Front and Rear Park Assist¹⁴
The system alerts you with a chime if your vehicle is too close to another object. A visual reference along with Rear Cross-Path Detection¹⁴ is also provided in the cluster display for enhanced parking convenience.

100+

STANDARD AND AVAILABLE SAFETY & SECURITY FEATURES

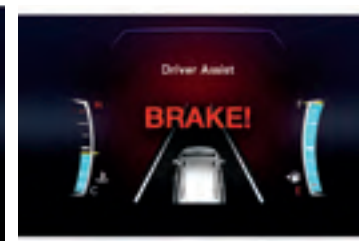


8

AIRBAGS¹⁷

STANDARD

Equipped to Protect The standard air bags¹⁷ include advanced multistage front air bags¹⁷ with adaptive venting technology, front occupant knee air bags¹⁷, supplemental front-seat-mounted side-impact air bags¹⁷ and side-curtain air bags¹⁷ which extend over all three outside seating rows.



APPLE CARPLAY™20 THE ULTIMATE COPILOT.

The technology and user experience people know and love is now available in the Chrysler Pacifica for the ultimate in-car entertainment experience. Use Maps, make phone calls, talk to text and listen to 50-million Apple Music songs — all through your Uconnect® system, Apple CarPlay²⁰ and available Alpine® Audio Group.

PERSONALIZE THE INFORMATION YOU SEE

An available 7-inch full-color Driver Information Display (DID) delivers sharp, configurable graphics, seamlessly integrated with cluster gauges for a wide range of customizable settings, digital speedometer, fuel economy, active safety features and available turn-by-turn navigation with instant access.

UCONNECT®

THEATER

Keep rear occupants' attention span occupied with the available Uconnect Theater, part of the most advanced entertainment system in its class.²

Two 10-inch HD touchscreens

Nine built-in games and apps

Dual HDMI inputs

Headphone jacks

Blu-ray® DVD player

115-volt outlet

First-row USB²¹ for second-row movies

Charging ports available in all three rows

Android™ device wireless streaming²²

Bluetooth® touchpad remotes

Uconnect®



HDMI





THE MOST ADVANCED ENTERTAINMENT
SYSTEM IN ITS CLASS²



BRING YOUR PLAYLIST ALONG FOR THE RIDE

The available Harman Kardon® premium audio system reaches every seat with perfectly tuned multichannel Surround Sound with up to 20 speakers in 13 locations — providing an immersive audio experience.

harman/kardon®



Choice, connection and harmony.

YOUR PERSONAL

PLAYGROUND

Available Uconnect® 4G makes securing the perfect location to get online simple with a built-in hotspot²⁵ that uses the antenna of your Chrysler Pacifica to connect to your personal Wi-Fi²⁵ device. And with the AT&T® nationwide network, you're always connected to fast, reliable Internet speed for up to eight devices and within 50 feet of your vehicle.

Uconnect Phone

Pair a Bluetooth® phone to send and receive hands-free²⁴ calls. Includes Do Not Disturb to route incoming calls to voice mail, hold texts and send automated replies.

Voice Recognition

Make calls, record voice memos and select media stations and navigation destinations.

Drag and Drop Menu Bar

Personalize the touchscreen dashboard with your top six features and services.

One-step Navigation

Uconnect 4C NAV with 8.4-inch touchscreen includes navigation with enhanced graphics, 3D city and landmark images, maps and one-step voice destination. Available.

SiriusXM® All Access Package²⁵

Get over 160 channels on your radio, including premium programming and Instant Replay to pause, replay, rewind and fast-forward programs. One-year trial.

SiriusXM²⁵ on the App and Online

Stream SiriusXM²⁵ beyond your vehicle. Go to siriusxm.com/getallaccess for more information.

SiriusXM Traffic Plus²⁵ / SiriusXM Travel Link²⁵

Get detailed information on traffic, construction, road closures, weather forecasts, fuel prices, sports scores and movie schedules.

SiriusXM Guardian²⁶

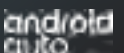
A premium suite of safety and convenience services that can be accessed in-vehicle or through the Uconnect App, such as **Remote Vehicle Start**²⁷ and to locate your vehicle on a map using **Vehicle Finder**²⁸. Includes a one-year trial. Available.

Apple CarPlay^{TM20}

Integrates your iPhone® and Siri^{®29} with the Uconnect® touchscreen to make calls, access music, send/receive messages²⁴ and get traffic-optimized directions while focused on the road.

Android Auto^{TM30}

Automatically connects your Android[™] phone to the Uconnect touchscreen system to safely access Google Maps and Music, place phone calls, send/receive messages²⁴ and Google Search by voice.





PRECISION-TUNED

DRIVING

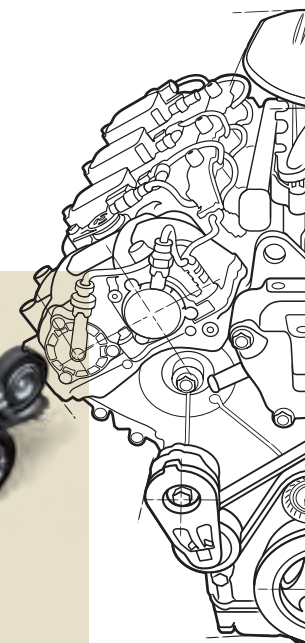
A PLATFORM FOR SMOOTH UTILITY

Tuned and calibrated on rural roads, thoroughfares, highways and at validation facilities, the Pacifica is equipped to deliver the ride, feel and comfort of a premium vehicle. Precision-tuned handling allows for more aggressive driving characteristics, precise, responsive steering and best-in-class³¹ towing capacity. The low-rolling-resistance tires are a key component to outstanding highway fuel efficiency,* while stiffer wheel designs help reduce noise, vibration and harshness (NVH) factors.



BEST-IN-CLASS³¹ TOWING CAPACITY

Whether it's loading up the trailer with home improvement supplies, garage sale furniture, or pulling the family camper or boat, you'll easily get it done with a towing capacity of up to 3,600 lb. When you're pulling that much weight, it's nice to know the available Trailer Sway Control³² (TSC) will help keep you safely on course.



STRUCTURAL INTEGRITY

The upper body and frame of the Pacifica structure are designed as a single unit, helping to achieve premium driving agility. This exceptionally solid architecture carries advanced structural applications, optimized proportions and dynamic qualities like the use of high-strength steels. The door design also increases visibility around the front windows and pillars while sound-absorbing barriers throughout the body and engine area reduce overall cabin noise, contributing to less driver distraction.

*Based on EPA-estimated fuel economy ratings. 18 city/22 combined/28 hwy mpg (3.6L V6 with 9-speed automatic transmission),

46 19 city/22 combined/28 hwy mpg (3.6L V6 with 9-speed automatic with Engine Stop/Start (ESS). Actual mileage may vary.

CHRYSLER PACIFICA WHEELS



17-inch Steel Wheel with Full Cover
Standard on Pacifica L (W7C/WFU)



17-inch Cast-Aluminum Wheel Fully Painted Tech Silver
Standard on LX (WFN)



17-inch Cast-Aluminum Wheel Fully Painted Tech Silver
Standard on Touring Plus and Touring L
Optional on LX (WFS)



17-inch Cast-Aluminum Polished Face Wheel with Tech Grey Painted Pockets
Standard on Touring L Plus and Hybrid Limited
Optional on Hybrid Touring Plus and Hybrid Touring L (WGP)



18-inch Cast-Aluminum Wheel Fully Painted Fine Silver
Optional on Touring Plus, Touring L and Touring L Plus (WPW)



18-inch Cast-Aluminum Wheel Fully Polished
Standard on Limited (WPD)



20-inch Cast-Aluminum Polished Face Wheel with Tech Grey Painted Pockets
Optional on Limited (WPA)



18-inch Cast-Aluminum Wheel with Black Noise Finish
Packaged with S Appearance Package (WHG)



20-inch Cast-Aluminum Wheel with Black Noise Finish
Optional with S Appearance Package (WRE)



17-inch Polished Cast-Aluminum Wheel
Standard on Hybrid Touring Plus and Hybrid Touring L (WAE)



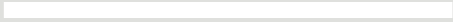
18-inch Cast-Aluminum Polished Face Wheel with Tech Grey Painted Pockets
Optional on Hybrid Limited (WPU)



18-inch Cast-Aluminum Wheel with Black Noise Finish
Included with S Appearance Package on Hybrid Touring Plus, Hybrid Touring L and Hybrid Limited (WAK)



CHRYSLER PACIFICA COLORS



Billet Silver Metallic



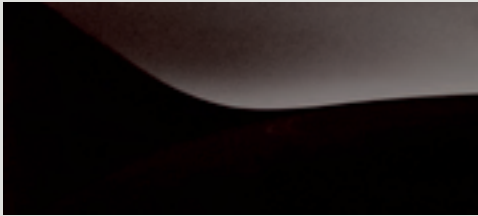
Ocean Blue Metallic



Bright White Clear Coat



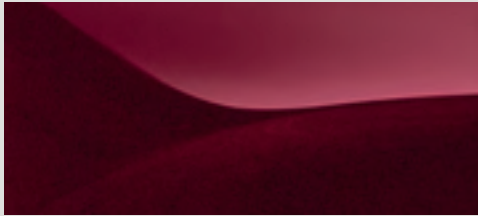
Maximum Steel Metallic*



Dark Cordovan Pearl Coat



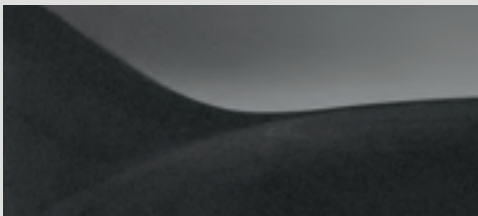
Brilliant Black Crystal Pearl Coat



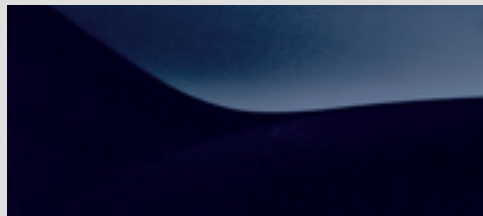
Velvet Red Pearl Coat



Luxury White Pearl Coat*



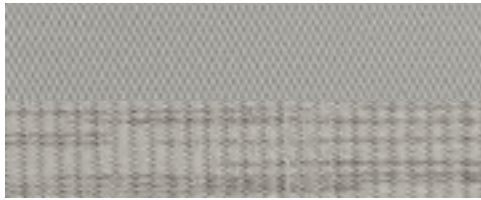
Granite Crystal Metallic



Jazz Blue Pearl Coat



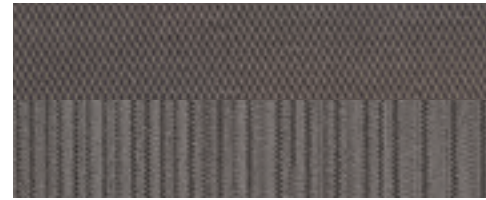
PACIFICA INTERIOR MATERIALS



Alloy Cloth/Rain Forest Print and Ice Blue stitching – Standard on Hybrid Touring Plus



Black Cloth/Ravine and Sepia stitching – Standard on L, LX and Touring Plus



Toffee Cloth/Ravine and Toffee stitching – Standard on L, LX and Touring Plus



Black Cloth/Black Ravine with Light Diesel Grey stitching/embroidered S logo – Included with S Appearance Package on Touring Plus and Hybrid Touring Plus



Black McKinley Leather-trim/Axis Perforations with Light Diesel Grey stitching/embroidered S logo – Included with S Appearance Package on Touring L, Touring L Plus and Hybrid Touring L



Black McKinley Leather-trim, Axis Perforated inserts with Sepia stitching – Standard on Touring L, Hybrid Touring L and Touring L Plus



Alloy McKinley Leather-trim, Axis Perforated inserts with Alloy stitching (Ice Cave stitching on Hybrid) – Standard on Hybrid Touring L, Optional on Touring L and Touring L Plus



Alloy/Toffee Two-tone McKinley Leather-trim, Axis Perforated inserts with Toffee stitching – Standard on Touring L and Touring L Plus



Black Nappa Leather-trim, Axis II Perforated inserts with Diesel Grey stitching – Standard on Limited and Hybrid Limited



Alloy Nappa Leather-trim, Axis II Perforated inserts with Cranberry Wine stitching (Ice Cave stitching on Hybrid) – Standard on Limited and Hybrid Limited



Deep Mocha Nappa Leather-trim with Diesel Grey stitching and Axis II Perforated inserts – Standard on Limited and Hybrid Limited



Black Nappa Leather-trim/Axis II Perforated inserts with Light Diesel Grey stitching/embroidered S logo – Included with S Appearance Package on Limited and Hybrid Limited



CHRYSLER PACIFICA SPECIFICATIONS

	PACIFICA	PACIFICA	PACIFICA	PACIFICA	PACIFICA	PACIFICA	PACIFICA	PACIFICA	PACIFICA
		TOURING	TOURING	TOURING	TOURING	TOURING	TOURING	TOURING	TOURING
		PLUS	PLUS	PLUS	PLUS	PLUS	PLUS	PLUS	PLUS
		LIMITED	LIMITED	LIMITED	LIMITED	LIMITED	LIMITED	LIMITED	LIMITED
		HYBRID	HYBRID	HYBRID	HYBRID	HYBRID	HYBRID	HYBRID	HYBRID
		TOURING	TOURING	TOURING	TOURING	TOURING	TOURING	TOURING	TOURING
		PLUS	PLUS	PLUS	PLUS	PLUS	PLUS	PLUS	PLUS
		LIMITED	LIMITED	LIMITED	LIMITED	LIMITED	LIMITED	LIMITED	LIMITED
ENGINES AND TRANSMISSIONS									
3.6L Pentastar® V6 VVT engine with 9-speed automatic transmission	*								
3.6L Pentastar V6 VVT engine with Stop/Start and 9-speed automatic transmission	*	*	*	*	*	*	*	*	*
3.6L Atkinson Cycle V6 Hybrid engine with electrically variable transmission								*	*
MECHANICAL FEATURES									
Alternator – 160-amp	*								
– 180-amp	*	*	*	*	*	*	*	*	*
– 220-amp (included with Uconnect® Theater with Streaming and Trailer Tow Group)		P	P	*	P				O
Battery – 650-amp, maintenance-free (packaged with Stop/Start configuration)	*	*	*	*	*	*	*	*	*
– 730-amp, maintenance-free	*	*	*	*	*	*	*	*	*
– Auxiliary battery (packaged with Stop/Start configuration)		*	*	*	*	*	*	*	*
– Battery charge indicator								*	*
Battery Charger – 6.6-kW with cord								*	*
Brakes – 4-wheel antilock disc regenerative								*	*
– 4-wheel antilock with discs	*	*	*	*	*	*	*	*	*
Defroster – Rear	*	*	*	*	*	*	*	*	*
Engine Block Heater	O	O	O	O	O	O	O		
Fuel Tank – 16.5-gallon								*	*
– 19-gallon	*	*	*	*	*	*	*	*	*
Suspension – Heavy-duty								*	*
– Normal-duty	*								
– Touring-tuned		*	*	*	*	*	*	*	*
Tip Start – Quiet start, prevents double starts	*	*	*	*	*	*	*	*	*
EXTERIOR FEATURES									
Door Handles – Black	*								
– Body-color (included with S Appearance Package)	*	P	P	P	P	P	P	P	P
– Bright (not available with S Appearance Package)		*	*	*	*	*	*	*	*
Doors – Power sliding		*	*	*	*	*	*	*	*
– Hands-free liftgate (included with hands-free sliding doors and liftgate)					P	*			*
– Hands-free sliding doors (included with hands-free sliding doors and liftgate)					P	*			*
– Hands-free sliding doors and liftgate – Includes hands-free sliding doors and liftgate					O	*			*
Fog Lamps – LED								*	*
– Premium		*	*	*	*	*	*	*	*
Full Sunroof – Power front, fixed rear (not available with Tri-Pane Panoramic Sunroof; late availability, restrictions apply)		O	O	O	O				
Glass – Sunscreen	*	*	*	*	*	*	*	*	*
Grille – Black	*	*							
– Black grille with bright surround								*	*
– Black upper grille		*	*	*	*	*	*	*	*
– Black Chrysler grille wing badge (included with S Appearance Package)		P	P	P	P				
Headlamps – Auto High-Beam Headlamp Control (included with Advanced SafetyTec™ Group)		P	P	P	P				P
– Automatic	*	*	*	*	*	*	*	*	*
– Dual High Intensity Discharge (HID)								*	*
– Halogen	*	*							
– Quad-halogen		*	*	*	*	*	*	*	*
Liftgate – Power		*	*	*	*	*	*	O	*
Mirrors – Foldaway, power, heated body-color	*	*							
– Foldaway, power, heated body-color		*	*	*	*	*	*	*	*
– Power folding, power, heated with chrome exterior, memory feature, auto-dimming, driver side, courtesy lamps, supplemental turn indicator, auto-adjust-in-Reverse								*	*
Molding – Bodyside, bright (not available with S Appearance Package)				*	*	*	*	*	*
Roof Rack – Stow 'n Place® Black (included with S Appearance Package)		O	P	P	P	O/P	P	P	P
– Stow 'n Place with bright side rails (not available with S Appearance Package)		*	*	*	*	*	*	*	*

* = Included. P = Available within Package noted. O = Optional.

EXTERIOR FEATURES (continued)									
Sill Appliqué – Body-color	*	*	*	*	*	*	*	*	*
Tires – 235/65R17 BSW All-Season	*	*	*	*	O	*	*	*	*
– 235/65R17 BSW All-Season	O	O	O	O	*				
– 235/60R18 BSW All-Season					P				O
– 235/60R18 BSW All-Season (included with S Appearance Package on Hybrid models)		P	P	P	P	P	P	P	P
– 235/60R18 BSW All-Season		O	O	P	*				
– 245/50R20 BSW All-Season (optional only with S Appearance Package; packaged with Eight-Passenger Seating on Limited)		O	O	O	O/P				
– 245/50R20 BSW All-Season		P	P	P	P				
– Tire service kit	*	*	*	*	*	*	*	*	*
– Inflatable spare tire kit		O	O						
– Inflatable spare tire kit with sealant (packaged with vacuum delete on Limited)					O	P			
Tri-Pane Panoramic Sunroof – Power (not available with Eight-Passenger Seating and 20-inch Wheel Group on Limited)					O	*			O
Wheels – 17-inch steel with covers	*								
– 17-inch aluminum fully painted Tech Silver	*								
– 17-inch aluminum fully painted Tech Silver		O	*	*					
– 17-inch polished aluminum							*	*	
– 17-inch aluminum polished face with Tech Grey painted pockets							*	O	O
– 18-inch painted aluminum fully painted Fine Silver		O	O	O					
– 18-inch polished aluminum							*		
– 18-inch aluminum polished face with Tech Grey painted pockets									O
– 18-inch aluminum Black Noise finish (included with S Appearance Package)		P	P	P	P				
– 18-inch aluminum Black Noise finish (included with S Appearance Package)								P	P
– 20-inch aluminum polished face with Tech Grey painted pockets (packaged with Eight-Passenger Seating and 20-inch Wheel Group)							P		
– 20-inch aluminum Black Noise (optional only with S Appearance Package)		O	O	O	O/P				
Windshield Wipers – Front, rain-sensing (included with Advanced SafetyTec™ Group)		P	P	P	P				P
– Front, variable/intermittent	*	*	*	*	*	*	*	*	*
– Rear wiper/washer	*	*	*	*	*	*	*	*	*
INTERIOR FEATURES									
Air Conditioning – 3-zone automatic temperature control			*	*	*	*	*	*	*
– 3-zone manual temperature control	O	*							
– Driver and front-passenger manual temperature control	*								
Door Locks – Power	*	*	*	*	*	*	*	*	*
Grocery Bag Hooks – On 3rd-row seatbacks			*	*	*	*	*	*	*
Lighting – Map/dome reading lamps switchable	*								
– Front and rear LED lamps	*	*	*	*	*	*	*	*	*
– Cargo compartment lamp	*	*	*	*	*	*	*	*	*
– Footwell courtesy lamp							*		
– Interior door handle LED lamps		*	*	*	*	*	*	*	*
– Front, courtesy lamp	*	*	*	*	*	*	*	*	*
– Glove box lamp		*	*	*	*				
– Liftgate, single floodlamp		*	*	*	*				
– Overhead, ambient surround	*	*	*	*	*	*	*	*	*
– Rear reading/courtesy lamps		*	*	*	*	*	*	*	*
– Rear ambient lighting					*	*			
– Right and left front-door searchlights					*				
– Illuminated map pocket and puddle lamp					*				
Mirrors – Auto-dimming rearview		*	*	*	*	*	*	*	*
– Illuminated visor vanity	*	*	*	*	*	*	*	*	*
– Rearview day/night	*	*							

CHRYSLER PACIFICA SPECIFICATIONS (continued)

INTERIOR FEATURES (continued)	PACIFICA	PACIFICA LX	PACIFICA TOURING PLUS	PACIFICA TOURING	PACIFICA TOURING PLUS LIMITED	PACIFICA HYBRID TOURING PLUS	PACIFICA HYBRID TOURING	PACIFICA HYBRID LIMITED
Power Outlets — Auxiliary, 12-volt in instrument panel	•	•	•	•	•	•	•	•
— Auxiliary, 115-volt (included with Uconnect® Theater with Streaming)			P		P			P
Remote Start System ²⁷ (restrictions apply on Hybrid Touring Plus)			•	•	•	•	O	•
Shades — 2nd- and 3rd-row retractable			•	•	•	•	•	•
— 2nd-row (included with S Appearance Package on Hybrid Touring Plus)			•				P	
Speed Control (not available with Adaptive Cruise Control (ACC) ¹⁸)	•	•	•	•	•	•	•	•
— ACC with Stop and Go ¹⁸ (included with Advanced SafetyTec™ Group)			P	P	P	P		P
Steering Column — Tilt/telescoping	•	•	•	•	•	•	•	•
Steering Wheel — Heated (included with Cold Weather Group)			P	•	•	P	•	•
— Luxury			•	•	•	•	•	•
— Mounted audio controls			•	•	•	•	•	•
— Urethane	•	•	•					
— Leather-wrapped (included with S Appearance Package and Cold Weather Group on Touring Plus and Hybrid Touring Plus)			P	•	•	P	•	
Storage — Floor tray	•	•	•	•	•	•	•	•
— Floor console	•	•						
— Full-length upgraded floor console			•	•				
— Super Console (includes illuminated cup holders)					•	•		
— Glove box, locking	•	•	•	•	•	•	•	•
— Lower instrument-panel cubby bin (not available with Blu-ray®/DVD player/USB port)	•	•	•	•	•	•	•	•
Stow 'n Vac® integrated vacuum cleaner								•
— Vacuum delete (includes inflatable spare tire)							O	
Trip Computer — Electronic Vehicle Information Center (EVIC) with display in instrument cluster, controls mounted on steering wheel	•	•	•	•	•	•	•	•
Universal Garage Door Opener — Programmable, 3-function								•
Windows — Front, power with driver's 1-touch up/down, front-passenger 1-touch down (front 1-touch included with SafetyTec on Pacifica L model)	P	•	•	•	•	•	•	•
— Power front with driver 1-touch	•							
— Power front and rear 1-touch up/down					•	•		
— Power 2nd-row	•	•	•	•	•	•	•	•

SEATING AND TRIM

Seats — Driver's 4-way power lumbar support (included with power driver's seat)	•	•	•	•	•	•	•	•
— 8-way power driver's seat (with memory on Limited only)	•	•	•	•	•	•	•	•
— 8-way power front-passenger seat (included with Uconnect Theater with Streaming and Premium Audio Group; includes Auto Advance 'n Return on passenger side non-Hybrid)			P	P	•	•	O/P	•
— Heated 2nd-row seats					•	•		
— Heated front seats (included with Cold Weather Group)			P	•	•	P	•	•
— Premium cloth	•	•	•					
— Cloth							•	
— Perforated leather-trimmed					•	•	•	
— Premium leather-trimmed						•		
— Perforated leather-trimmed (included with S Appearance Package)			P	P			P	
— Cloth with S logo (included with S Appearance Package)			P				P	
— Nappa leather-trimmed (included with S Appearance Package)						P		P
— 2nd-row deluxe bench seats with 3rd-row Stow 'n Go®	•							
— 2nd-row Stow 'n Go bucket seats that fold in the floor and include 2nd-row in-floor storage bins			•	•	•	•		
— Easy-entry sliding 2nd-row							•	•
— Auto Advance 'n Return driver's side	•	•	•	•	•	•	•	•

• = Included. P = Available within Package noted. O = Optional.

SEATING AND TRIM (continued)

— Auto Advance 'n Return passenger side (packaged with 8-way power passenger seat)			P	P	•	•		
— 3rd-row power folding Stow 'n Go® 60/40 bench seat that folds in the floor							•	
— 3rd-row Stow 'n Go 60/40 bench seat that folds in the floor	•	•	•	•	•	•	•	•
— 8-passenger seating (packaged with 20-inch wheels on Limited; not available with Tri-Pane Panoramic Sunroof)		O	O	O	O	P		
— Ventilated front seats						•		•

UCONNECT™ MULTIMEDIA

SiriusXM® Radio ²⁵			•	•	•	•	•	•
Sound Systems — Harman Kardon® 20 speakers (included with 20-Speaker Harman Kardon Sound Group)						O	O	O
— Alpine® 13 speakers (included with Premium Audio Group)						P	•	P
— 6 speakers	•	•	•	•	•	•	•	•
Uconnect 4 with 7-inch display — Includes 7-inch touchscreen, AM/FM, Aux/USB, Integrated Voice Command with Bluetooth®, voice text reply, ³³ Android Auto ^{TM30} and Apple CarPlay ^{TM20}	•	•	•	•				
Uconnect 4 with 8.4-inch display — Includes 8.4-inch touchscreen, AM/FM, Aux/USB, Integrated Voice Command with Bluetooth, voice text reply, ³³ Android Auto ^{TM30} and HD radio (packaged with Uconnect Theater with Streaming and Premium Audio Group)			P	O/P			•	•
Uconnect 4C NAV with 8.4-inch display — Includes 8.4-inch touchscreen, AM/FM, Aux/USB, Integrated Voice Command with Bluetooth, voice text reply, ³³ Android Auto ^{TM30} Apple CarPlay ^{TM20} HD radio, Navigation, SiriusXM Guardian, ²⁶ SiriusXM Traffic Plus ²⁵ and SiriusXM Travel Link ²⁵			O	O	•	•	O	O
Single rear overhead DVD player		O	O	O			O	O
Integrated Voice Command — Hands-free communication system	•	•	•	•	•	•	•	•

SAFETY & SECURITY

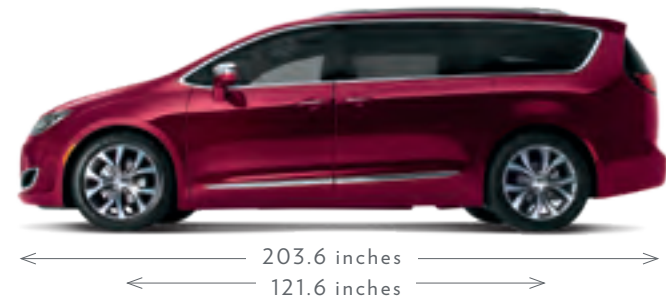
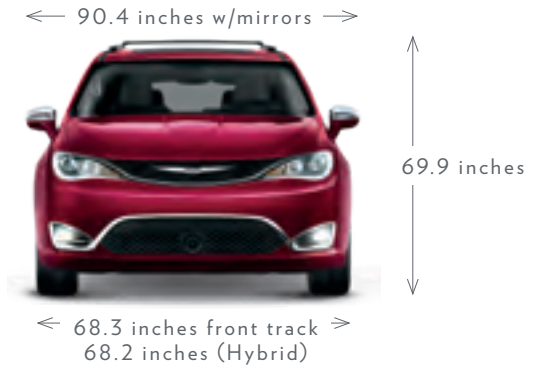
Air Bags ¹⁷ — Advanced multistage driver and front passenger, includes low-risk deployment	•	•	•	•	•	•	•	•
— Driver- and front-passenger side inflatable knee blocker ¹⁷	•	•	•	•	•	•	•	•
— Front-seat-mounted side ¹⁷	•	•	•	•	•	•	•	•
— Side-curtain ¹⁷ for outboard passengers in all 3 rows	•	•	•	•	•	•	•	•
Blind Spot Monitoring (BSM) ¹⁵ with Rear Cross-Path Detection System ¹⁴	•	•	•	•	•	•	•	•
Child Seat Anchor System (LATCH)	•	•	•	•	•	•	•	•
Electric Parking Brake	•	•	•	•	•	•	•	•
Electronic Stability Control (ESC) ³²	•	•	•	•	•	•	•	•
Full-Speed Forward Collision Warning Plus (FSFCW+) ¹⁶ (packaged with Advanced SafetyTec™ Group)			P	P	P	P		P
KeySense®	O	O	O	O	O	O	O	O
LaneSense® Lane Departure Warning Plus (LDW+) ¹⁹ (packaged with Advanced SafetyTec Group)			P	P	P	P		P
Mopar® Roadside Emergency Kit — Includes travel and safety kit, tool kit, reflecting triangle and first aid kit	O	O	O	O	O	O	O	O
Mopar Vehicle Tracking System	O	O	O	O	O	O	O	O
Parallel and Perpendicular Park Assist ¹⁴ (packaged with Advanced SafetyTec Group)			P	P	P	P		P
ParkSense® Front/Rear Park Assist with Stop ¹⁴ (packaged with Advanced SafetyTec Group)			P	P	P	P		P
ParkSense Rear Park Assist System with Stop ¹⁴ — Assists while parking (not available with Parallel and Perpendicular Park Assist ¹⁴)	•	•	•	•	•	•	•	•
ParkView® Rear Back-Up Camera ¹⁴ (not available with Surround-View Camera ¹⁴)	•	•	•	•	•	•	•	•
Remote Keyless Entry	•	•	•	•	•	•	•	•
Remote Proximity — All doors (packaged with power sliding doors on Pacifica LX model)	P	•	•	•	•	•	•	•
Security Alarm			•	•	•	•	•	•
Surround-View Camera ¹⁴ (packaged with Advanced SafetyTec Group)			P	P	P	P		P
Tire Pressure Monitoring System	•	•	•	•	•	•	•	•
Trailer Sway Control (TSC) ³² (packaged with Trailer Tow Group)			P	P	P	P		

CHRYSLER PACIFICA SPECIFICATIONS (continued)

PACKAGES/EQUIPMENT GROUPS	PACIFICA	PACIFICA X	PACIFICA TOURING PLUS	PACIFICA TOURING	PACIFICA TOURING PLUS	PACIFICA LIMITED	PACIFICA HYBRID TOURING PLUS	PACIFICA HYBRID TOURING L	PACIFICA HYBRID LIMITED
20-Speaker Harman Kardon® Sound Group — Includes 20 speakers and 760-watt amplifier					o	o			o
Advanced SafetyTec™ Group — Includes Advanced Brake Assist, acoustic windshield and 7-inch color display on Touring L and Touring L Plus models, Forward Collision Warning Plus (FCW+) ¹⁶ rain-sensing windshield wipers, Auto High-Beam Headlamp Control, Adaptive Cruise Control (ACC) with Stop and Go ¹⁸ LaneSense® Lane Departure Warning Plus (LDW+) ¹⁹ Blind Spot Monitoring (BSM) ¹⁵ Surround-View Camera ¹⁴ ParkSense® Front/Rear Park Assist with Stop ¹⁴ and Parallel and Perpendicular Park Assist with Stop ¹⁴ (Touring Plus and Touring L require Uconnect® 4C NAV with 8.4-inch display)			o	o	o	o			o
Cold Weather Group — Includes leather-wrapped heated steering wheel and heated front seats			o					o	
Eight-Passenger Seating and 20-inch Wheel Group (deletes Tri-Pane Panoramic Sunroof)							o		
Interior Protection Package — Includes all-weather floor mats, rear cargo bin Stow 'n Go® storage on non-Hybrid, rear cargo liner, all-weather cargo floor mats and bright door sills	o	o	o	o	o	o	o	o	o
Premium Audio Group — Includes power 8-way passenger front seat, 13 Alpine® speakers, USB charge port for 3rd row and Uconnect 4 with 8.4-inch display				o					o
S Appearance Package — Includes body-color door handles, Black Stow 'n Place® roof rack, body-color mirrors on Limited, 2nd-row window shades on Hybrid Touring Plus, Black Chrysler grille wing badge on non-Hybrid, S badge, Black badging, Black daylight opening (DLO) moldings, Black grille surrounds, leather-wrapped steering wheel on Touring Plus and Hybrid Touring Plus, 18-inch Black Noise aluminum wheels and unique S Appearance Package seats (restrictions apply)			o	o	o	o	o	o	o
SafetyTec Group — Includes ParkSense Rear Park Assist with Stop ¹⁴ BSM ¹⁵ Rear Cross-Path Detection System ¹⁴ and power front windows with 1-touch up/down on Pacifica L model	•	•	•	•	•	•	•	•	•
Trailer Tow Group (with 3,600-lb rating) — Includes trailer tow 7-/4-pin wiring harness, 2-inch hitch receiver, Trailer Sway Control ³² heavy-duty radiator and 220-amp alternator on Touring Plus, Touring L and Limited			o	o	o	o			
Uconnect Theater with Streaming Package — Includes 220-amp alternator, 115-volt auxiliary power outlet, 8-way power passenger front seat on Touring Plus, wireless headphones, video remote control, HDMI input, 3rd-row USB charge port, two 10-inch seatback touchscreens, video USB port, Blu-ray®/DVD player and Uconnect 4 with 8.4-inch touchscreen on Touring Plus (restrictions apply)			o		•	o			o

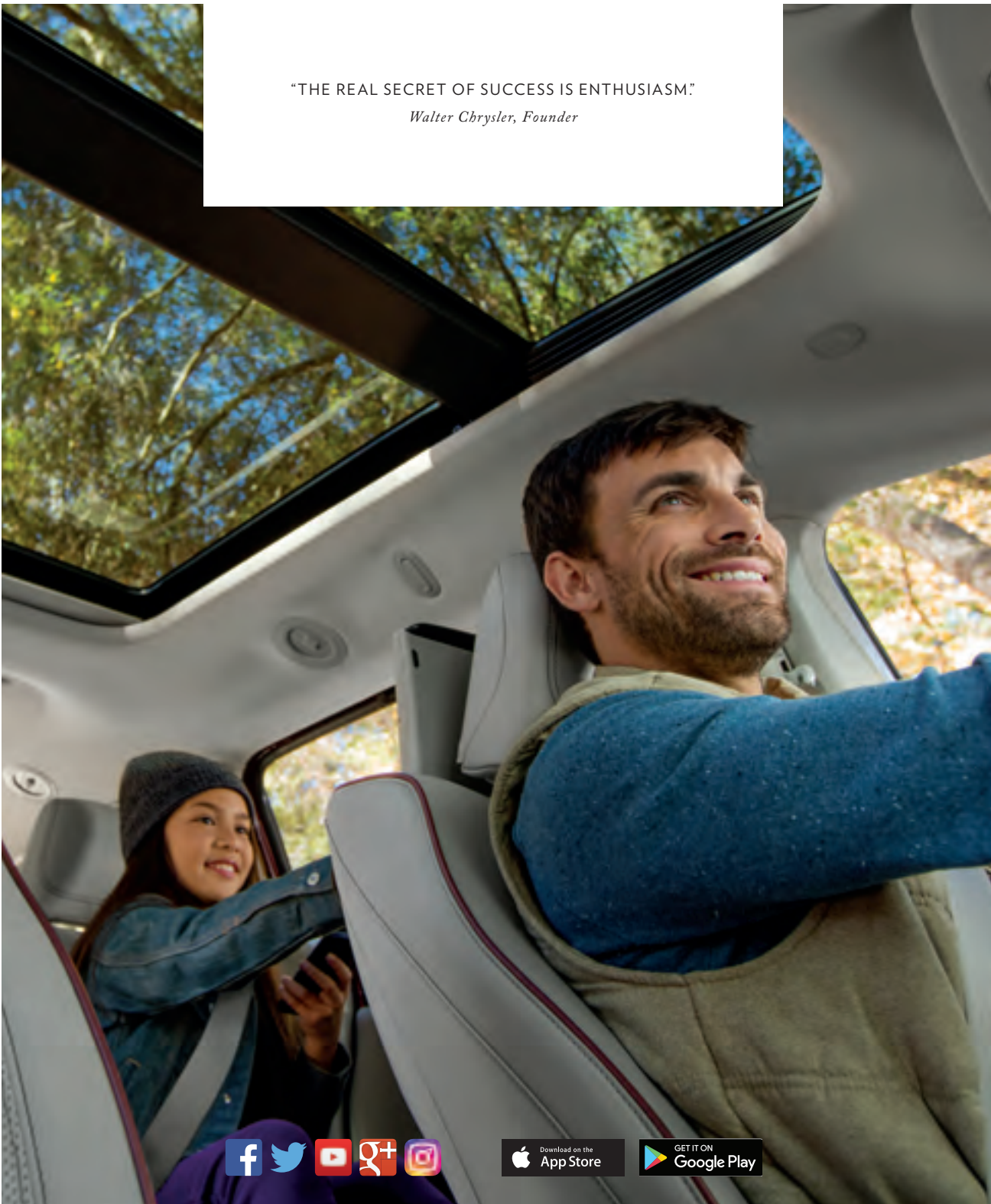
• = Included. o = Optional.

CHRYSLER PACIFICA DIMENSIONS



“THE REAL SECRET OF SUCCESS IS ENTHUSIASM.”

Walter Chrysler, Founder



WARRANTIES

Chrysler Brand vehicles are covered by an FCA US LLC 3-Year or 36,000-Mile Basic Limited Warranty²⁴ (excludes normal maintenance and wear items) as well as a 5-Year or 60,000-Mile Powertrain Limited Warranty²⁵ that is fully transferable and includes Roadside Assistance services: Flat Tire, Lockout, Towing, Out of Gas/Fuel Delivery and Battery Jump Assistance. Ask your dealer for details and a copy of these limited warranties.

AUTOMOBILITY PROGRAM

The FCA US LLC Automobility Program provides aftermarket reimbursement incentives on adaptive vehicle uplift equipment in order to help provide safe and reliable vehicle modifications to enhance accessibility for all people. For more information, call (800) 255-9877 or visit chryslerautomobility.com

SIRIUSXM® RADIO²⁵

SiriusXM Radio²⁵ delivers over 160 channels, including commercial-free music, sports, news, talk, entertainment, traffic and weather. Factory-installed SiriusXM Radio²⁵ includes a one-year subscription. For more information, go to siriusxm.com

OFFICIAL CHRYSLER OWNER SITE AND APP

Your Chrysler Brand vehicle ownership gives you exclusive access to personalized vehicle information, service and maintenance records, recall notifications, roadside assistance, special offers and more through whatever device you prefer – desktop, tablet or smartphone! Register for your Chrysler Vehicle Owner Site account at mopar.com/chrysler or download the **Chrysler For Owners app** for free at either the App or Google Play stores.

MOPAR® VEHICLE PROTECTION

Mopar Vehicle Protection[®] has a vested interest in your satisfaction and owner experience with your new Chrysler Brand vehicle. This is the only extended protection provider backed by the manufacturer, FCA US LLC. We stand behind every Mopar Vehicle Protection plan with certified, factory-trained technicians and the use of authentic Mopar parts. Your plan is honored at over 2,600 dealerships within the United States, Canada, Puerto Rico and Mexico. Be sure to ask for a Mopar Vehicle Protection plan at your dealership, call (800) 442-2666 or visit moparvehicleprotection.com

JOIN IN

Join fellow enthusiasts and tell your story by posting comments, participating in discussions and sharing your Chrysler vehicle photos and videos. Join our community on Facebook (facebook.com/Chrysler), follow us on Twitter (twitter.com/Chrysler), YouTube (youtube.com/TheChryslerChannel), Google+ (plus.google.com/+Chrysler) and check us out on Instagram (instagram.com/Chrysler). Thank you for following.

CHRYSLER DRIVEPLUSSM MASTERCARD^{®36}

Apply today for a Chrysler DrivePlus Mastercard and upon approval, earn a \$100 statement credit toward your first FCA US LLC in-dealership purchase AND earn 5% back on FCA US LLC dealership purchases, 2% back on gas and travel purchases and 1% back on purchases everywhere else³⁶ Double Redemptions (2X) when you redeem toward your next FCA US LLC dealership service or your next Chrysler Brand vehicle purchase. Visit drivepluscard.com or visit a participating dealer to learn more.

CHRYSLER MERCHANDISE

Bring Chrysler Brand distinction to your lifestyle, both in and outside your vehicle with apparel, personal accessories, gift cards and more. Shop the complete line at collection.chrysler.com



AUTHENTIC CHRYSLER

ACCESSORIES

The Chrysler Pacifica embodies family utility and sleek, sporty style. A wide range of authentic Mopar® accessories, crafted specifically for the versatile ingenuity of the modern Pacifica, lets you take your family's active lifestyle even further. From Sport and Cargo Carriers to Premium Protection Parts, Mopar helps the crew and all its gear go the distance. Visit your local Chrysler dealership to see the full line of Authentic Accessories for the Chrysler Pacifica.



Vehicle is shown with Roof-Mount Surf and Paddle Board Carrier, Roof Rack Kit, License Plate Frame, Trailer Tow Wiring Harness, Hitch Receiver Bezel, Molded Splash Guards, Bodyside Moldings and Side Window Air Deflectors.*

*Properly secure all cargo. *Check User Guide for hitch, load capacity and heavy-duty equipment required. Do not exceed rated tow capacity of vehicle as equipped. Trailer may require items not supplied by Mopar.*



mopar.com

(1) The 2018 Chrysler Pacifica was named Family Car of the Year for 2018 by Cars.com. (2) Based on available features and the FCA US LLC Premium Minivan segment. (3) EPA-estimated 28 hwy mpg. Based on FCA US LLC Premium Minivan segment. Actual mileage may vary. (4) Based on FCA US LLC Premium Minivan segment. Second-row Stow 'n Go not available on hybrid models. (5) Be sure to follow all instructions in Owner's Manual for removal. (6) This incentive is offered by a third party and is subject to change without notice. Please confirm this information to ensure its accuracy and availability. Consult a tax professional for details and eligibility requirements. (7) Terms and conditions of warranties vary by brand and vehicle. See your dealer for complete details or sign in to download a copy of your vehicle's warranty. Warranty may be restricted or denied if your vehicle or part has been modified, improperly maintained or removed. (8) Certain features require a compatible streaming device and may use your device's data plan. See dealer for details. Vehicle must be registered with Uconnect Access and fulfill minimum subscription requirements. Vehicle must also be properly equipped and in an active and usable cellular range. (9) Based on available features and the FCA US LLC 7-passenger hybrid segment. (10) Requires purchase and professional installation. See your Chrysler dealer for details. (11) Based on EPA estimates. Actual mileage may vary. (12) EPA-estimated miles per gallon of gasoline equivalent (MPGe). Actual mileage may vary. (13) EPA-estimated with fully charged battery. Actual mileage may vary. (14) Always look before proceeding. An electronic drive aid is not a substitute for conscientious driving. Always be aware of your surroundings. (15) Always check visually for vehicles prior to changing lanes. (16) This system is an alert system for the front of the vehicle. It is not a substitute for active driver involvement. The driver must remain aware of traffic conditions and be prepared to use brakes to avoid collisions. (17) Always sit properly in designated seating positions with seat belts securely fastened at all times. (18) This system is a driver convenience system, not a substitute for active driver involvement. The driver must remain aware of traffic conditions and be prepared to use the brakes to avoid collisions. (19) This system is a driver convenience system, not a substitute for active driver involvement. The driver must remain aware of traffic conditions and maintain control of the vehicle. (20) Requires compatible iPhone. See dealer for phone compatibility. Data plan rates apply. Vehicle user interface is a product of Apple. Apple CarPlay is a trademark of Apple Inc. iPhone is a trademark of Apple Inc., registered in the US and other countries. Apple terms of use and privacy statements apply. (21) For supported file formats, refer to the USB Port section of the Owner's Manual on the DVD. (22) Certain features require compatible streaming device and may use your device's existing data plan. See dealer for details. (23) Three-month/1GB trial included with the purchase or lease of a new vehicle. Upon expiration of the trial period, purchase of a subscription is required. Wi-Fi Hotspot available through third-party subscription. Requires Internet-enabled mobile device. See dealer for details. This feature is not intended for use by the driver while the vehicle is in motion. Always drive carefully. (24) The Uconnect Phone requires a mobile phone equipped with the Bluetooth Hands-Free Profile. To check phone compatibility, please visit www.UconnectPhone.com. (25) SiriusXM satellite radio, SiriusXM Traffic and SiriusXM Travel Link each require a subscription sold separately, or as a package, by Sirius XM Radio Inc. If you decide to continue service after your 1-year trial included with the new vehicle purchase, the subscription plan you choose will automatically renew thereafter and you will be charged according to your chosen payment method at then-current rates. Trial service is not transferable. Fees and taxes apply. Please see the Customer Agreement at www.siriusxm.com for complete terms and how to cancel, which includes calling SiriusXM at 1-866-635-2349. All fees and programming are subject to change. Not all vehicles or devices are capable of receiving all services offered by SiriusXM. Data displays and individual product availability vary by vehicle hardware. Current information and features may not be available in all locations or on all receivers. Weather Forecast, Current Conditions may not be available in all locations. (26) All SiriusXM Guardian-equipped vehicles come with a 12-month trial effective on the date of purchase or lease of a new vehicle. Enrollment in the trial is required to receive service. Upon expiration of the trial period, purchase of a subscription is required to continue SiriusXM Guardian. SiriusXM Guardian is available only on equipped vehicles purchased within the United States, Canada and Puerto Rico. Services can only be used where cellular coverage is available. See Uconnect and SiriusXM Guardian Terms of Service for complete service limitations. (27) Check state and local laws regarding the use of remote start systems. (28) To use Vehicle Finder, you must have the Uconnect App with SiriusXM Guardian installed on a compatible smartphone and have an active subscription to SiriusXM Guardian. (29) Requires an iPhone with Siri. Certain features are not available while the vehicle is in motion. iPhone must be within active cellular range. Customer's existing iPhone data rates apply to Internet-supported features. (30) To use Android Auto on your phone screen, you'll need an Android phone running 5.0 (Lollipop) or higher and the Android Auto app. Google, Android, Android Auto, YouTube and other related marks and logos are trademarks of Google LLC. (31) Based on the FCA US LLC Premium Minivan segment. Excludes other FCA US LLC vehicles. (32) Always drive carefully, consistent with conditions. Always wear your seat belt and obey traffic laws. (33) Voice Text Reply feature requires a compatible mobile device enabled with Bluetooth Message Access Profile (MAP). iPhone and some other smartphones do not currently support Bluetooth MAP. Visit www.UconnectPhone.com for system and device compatibility. Ensure MAP is ON and incoming message notification is enabled. Also requires the use of a compatible smartphone that supports text messaging and Bluetooth. Check www.UconnectPhone.com for device compatibility. (34) Visit Mopar.com for complete details and a copy of the 3-Year/36,000-Mile Basic Limited Warranty. (35) Visit Mopar.com for complete details and a copy of the 5-Year/60,000-Mile Powertrain Limited Warranty. (36) See the Reward Terms and Conditions in the Summary of Credit Terms provided at time of application for details, including earning, redemption, expiration or forfeiture. Percentage back is earned as points.

©2018 FCA US LLC. All Rights Reserved. Chrysler, Dodge, Jeep, Ram, the Chrysler wing design, Automobility Program, KeySense, LaneSense, Mopar, Mopar Vehicle Protection, Pacifica, ParkSense, ParkView, Pentastar, Stow 'n Go, Stow 'n Place, Stow 'n Vac and Uconnect are registered trademarks and SafetyTec is a trademark of FCA US LLC.

Alpine and the Alpine logo are registered trademarks of Alpine Electronics, Inc. All rights reserved. Apple, Apple Music, App Store, iPhone, iTunes and Siri are registered trademarks and Apple CarPlay is a trademark of Apple Inc. AT&T is a registered trademark of AT&T Knowledge Ventures. Bluetooth is a registered trademark of Bluetooth SIG, Inc. Blu-ray is a registered trademark of Blu-ray Disc Association, LLC. Facebook and logo are registered trademarks of Facebook, Inc. Google, Android, Android Auto and other related marks and logos are trademarks of Google LLC. Harman Kardon is a registered trademark and GreenEdge is a trademark of Harman International Industries, Inc. Instagram is a registered trademark of Instagram, Inc. SiriusXM Connected Vehicles Services Inc., Sirius, XM, SiriusXM and SiriusXM Guardian and all related marks and logos are registered trademarks of Sirius XM Radio Inc. The Twitter name, logo, Twitter T, Tweet and Twitter bird are service marks of Twitter, Inc. in the United States and other countries.

This brochure is a publication of FCA US LLC. All product illustrations and specifications are based upon current information at the time of publication approval. FCA US LLC reserves the right to make changes from time to time, without notice or obligation, in prices, specifications, colors and materials, and to change or discontinue models, which are considered necessary to the purpose of product improvement or for reasons of design and/or marketing.

