



ACCENT
2017



WHAT MAKES A HYUNDAI?

Incredibly rigorous, demanding and relentless quality assurance testing programs. That's what. After all, to sell more than 5 million vehicles a year around the world, our engineers and designers need to deliver a top quality product with the perfect combination of efficiency, craftsmanship and engaging drive that is truly world-class. What you may not know is that Hyundai takes unprecedented steps, pushing beyond the old, conventional way of doing things to deliver New Thinking, so we can provide you with New Possibilities.

Better crash safety requires stronger steel. Precise handling requires stiffer steel. And fuel efficiency requires lighter steel. How do you find steel that lives up to such stringent demands? If you're Hyundai, you become the only major automaker to make it yourself. New thinking is what happens when our vehicle engineers and metallurgists work side-by-side.

But making steel is only part of the story. World-class vehicles need world-class design that pushes the industry forward. Hyundai's three design centres – in Korea, the U.S. and Europe – compete against each other for the right to bring you new vehicles. The result of that competition is remarkable aerodynamic designs that not only stand out, but also improve fuel efficiency. On the inside, our fanatical dedication to perfection delivers interior cabins that are comfortable, intuitive and ergonomic.

We want you to feel confident because we are. We can back our vehicles with a 5-year/100,000 km Comprehensive Limited Warranty[†] because they have been tested across the world in the most extreme driving conditions imaginable. To deliver the durability and reliability you demand, our vehicles endure cold weather and extreme heat testing in areas like Canada's Arctic and our proving grounds in the Mojave Desert. Some are even tested on Germany's world-famous Nürburgring circuit. Our expert drivers test, tune, retest, and retune Hyundai vehicles to not only endure, but to deliver a rewarding driving experience that you can count on, kilometre after kilometre.

We do this – and more – because we want to exceed your every expectation. That's the Hyundai difference.





DON'T COMPROMISE

We engineered the Accent so that you wouldn't have to compromise when it comes to your need for efficiency and want for power, style and space. The fuel-efficient engine delivers a best-in-class^o 137 horsepower and both 4-door and 5-door models are boldly styled. Inside, the unbelievably spacious interior offers 600L of class-leading^o cargo space^A and is filled with comfort and convenience features like the available heated front seats and Bluetooth[®] hands-free phone system. All this and more is what separates the 2017 Accent from the rest.

CHOOSE YOUR STYLE

The 2017 Accent features two standout designs. For those who prefer sedan styling, there is the 4-door model, while the 5-door model offers hatchback versatility with great looks. No matter which one you prefer, everything from the available 16" alloy wheels and LED daytime running lights, to a suite of available vibrant colours provides a modern look while still staying true to the Accent's fun-loving spirit.



Available
FOG LIGHTS



Available
LED SIDE REPEATERS



Available
PROJECTION HEADLIGHTS WITH
LED DAYTIME RUNNING LIGHTS

STRETCH OUT

Considering its exterior proportions, the interior may seem a little like magic. Whether you are behind the wheel, sitting in the back, or lucky enough to be riding shotgun, the spacious interior of the Accent offers comfort and refinement that's unique to its class. In fact, the Accent 5-door offers 600L of class-leading² cargo space – and that's with the rear seats up right! Fold them flat for even more space to fill with all your necessities.

Space isn't the only thing that you will appreciate inside. Enjoy the available sunroof, tune into your favourite music with the standard iPod®/USB/auxiliary input jacks and keep connected with friends and family through the available Bluetooth® hands-free phone system.



May not be exactly as shown.



Available
STEERING WHEEL-MOUNTED
AUDIO / CRUISE / BLUETOOTH®
CONTROLS



Available
AUTOMATIC TEMPERATURE CONTROL

May not be exactly as shown.



Available
SUNROOF



ACTIVE AND PASSIVE SAFETY

For better accident avoidance, the 2017 Accent is equipped with active safety features such as standard 4-wheel disc brakes, an Anti-lock Braking System (ABS) with Electronic Brake-force Distribution (EBD) and Brake Assist (BA). The ABS works to prevent wheel lock-up during abrupt braking, EBD balances braking force at each wheel to help you maintain control, and BA ensures that maximum braking force is applied to help minimize stopping distance. In the event that an accident does occur, six airbags¹ provide added protection, front active head restraints can help reduce whiplash and a comprehensive Vehicle Stability Management system will help to optimize stability during a skid. When it comes to safety, the 2017 Accent is well-prepared.



CLASS-LEADING POWER

One of the primary measures of a small car is its fuel consumption and with Gasoline Direct Injection engine technology, the 2017 Accent is able to precisely control the injection of fuel and deliver an impressive 6.5L/100 km highway fuel economy[^]. But our story doesn't end here. The 2017 Accent provides outstanding fuel economy while also offering its class-leadingⁿ 137 horsepower. Choose between the 6-speed manual or available 6-speed SHIFTRONIC[®] automatic transmission and drive without compromising power or efficiency.

2017

MODEL SUMMARY AND COLOURS

4-DOOR / 5-DOOR L

STANDARD EQUIPMENT INCLUDES:

1.6L GDI engine
 6-speed manual transmission
 14" steel wheels with full cover
 4-wheel disc brakes
 60/40 split rear seats (5-door model only)
 AM/FM/CD/MP3 audio system
 iPod®/USB/Auxiliary input jacks
 Anti-lock Braking System with Electronic Brake-force Distribution and Brake Assist
 Driver and front passenger vanity mirror
 Driver's seat height adjustment

Driver's seat armrest
 Airbags¹ (6): Dual front, front seat-mounted side impact and roof-mounted side curtain
 EcoShift® indicator (M/T only)
 Electronic Stability Control system with Traction Control System and Vehicle Stability Management
 Front active head restraints
 Rear spoiler (5-door model only)
 Rear garnish (5-door model only)
 Sliding sun visor
 Trip computer

4-DOOR / 5-DOOR GL

INCLUDES STANDARD L EQUIPMENT PLUS:

6-speed automatic transmission with Active ECO System (4-door model only)
 60/40 split rear seats
 AM/FM/SiriusXM™/CD/MP3 audio system
 Bluetooth® hands-free phone system with voice recognition
 Cloth interior door trim
 Deluxe centre console with armrest
 Heated front seats
 Keyless entry with panic alarm

Manual air conditioning
 Power heated exterior mirrors
 Power windows with driver's side auto up/down
 Steering wheel-mounted audio and cruise controls
 Sunglasses holder
 Telescopic steering wheel
 Optional: 6-speed automatic transmission with Active ECO System for 5-door model

4-DOOR / 5-DOOR SE

INCLUDES STANDARD GL EQUIPMENT PLUS:

16" alloy wheels
 Fog lights

Power sliding sunroof

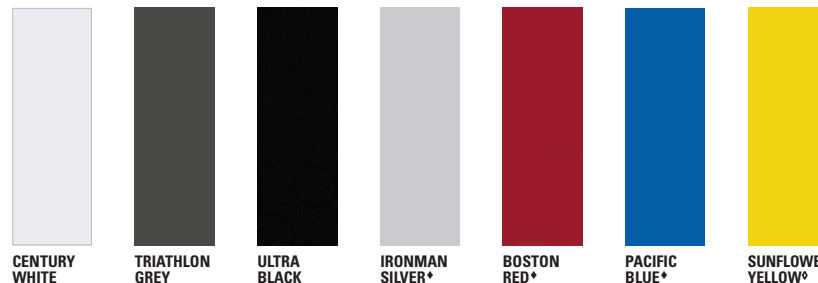
4-DOOR / 5-DOOR GLS

INCLUDES STANDARD SE EQUIPMENT PLUS:

Automatic temperature control
 Auto light control
 Matte chrome-coated interior door handles and parking brake button
 Leather-wrapped steering wheel and gear shift knob

Projection headlights with LED daytime running lights
 Side mirror-mounted turn signals
 Welcome and escort function headlight
 Optional: 6-speed automatic transmission with Active ECO System for 5-door model

EXTERIOR COLOURS



CENTURY WHITE

TRIATHLON GREY

ULTRA BLACK

IRONMAN SILVER*

BOSTON RED*

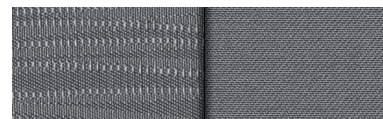
PACIFIC BLUE*

SUNFLOWER YELLOW*

*Not available on L model.

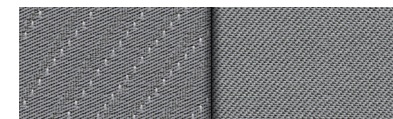
*Available on SE model only.

INTERIOR COLOURS



GREY CLOTH

4-door L, GL and SE models



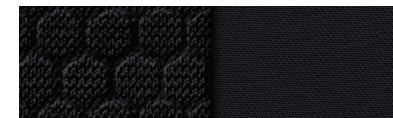
GREY PREMIUM CLOTH

4-door GLS model



BLACK CLOTH

5-door L, GL and SE models



BLACK PREMIUM CLOTH

5-door GLS model

WHEELS



14" Steel Wheel

Standard on L and GL models



16" Alloy Wheel

Standard on SE and GLS models

Choice of interior colour depends upon exterior colour and/or model selection. Due to the print production process, the colours shown throughout this brochure may vary slightly from the actual hue. Textures may not be exactly as shown. Visit hyundaicanada.com or see your dealer for details.

WARRANTY

5

5-YEAR/100,000 KM
COMPREHENSIVE
LIMITED WARRANTY†

5-YEAR/100,000 KM
POWERTRAIN WARRANTY

5-YEAR/100,000 KM
EMISSION WARRANTY

5-YEAR/UNLIMITED KM
ROADSIDE ASSISTANCE
PROGRAM**

THERE'S NO SUBSTITUTE FOR PEACE OF MIND

You will see that a number of our vehicles have received multiple awards from the most reputable third-party organizations, so you can take their word when it comes to the quality, design and safety of our vehicles. This quality is equally matched by the quality of our warranty. We stand confidently behind our products to give you the ultimate peace of mind with a 5-year/100,000 km Comprehensive Limited Warranty†, one of the best-backed warranties in Canada. We also provide a 5-year/Unlimited km Roadside Assistance Program** featuring flat tire changing, lockout service and more. Just one toll-free call away, 24 hours a day.

ACCESSORIES



HOOD PROTECTOR

Help prevent dents and scratches caused by road and vehicle debris with an attractive plastic hood protector.



AIR CONDITIONING

Stay cool all summer long with factory air conditioning.



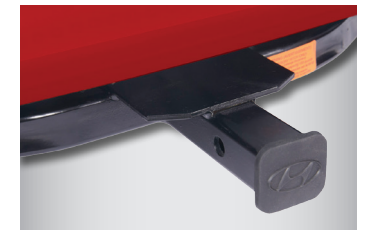
CARGO TRAY

Add years to the interior of your Hyundai by protecting it from spills and messy loads with a durable, custom-fit cargo tray.



PREMIUM ALL-WEATHER FLOOR LINERS

Premium all-weather floor liners were designed to cover the interior carpet, providing maximum protection against the elements that other mats cannot offer. Their unique and durable design features a non-slip surface for added comfort and a long-lasting premium look. Remove carpet mats prior to installation.



ACCESSORY FRAME

An accessory frame makes it quick and easy to attach hitch-mounted cargo equipment, such as bikes and ski racks. Frame not intended for towing.

For more information on additional accessories please visit hyundaicanada.com, or visit your dealer for details.

2017 ACCENT SPECIFICATIONS

| | | L | GL | SE | GLS | |
|--------------------------------------------------------------------------------------|--------------------------------------------------------------------------------------------|----------------------------------------------------------------|-----|----|-----|---|
| PERFORMANCE | | | | | | |
| Engine | 1.6L (1,591cc) GDI DOHC Inline 4-cylinder | • | • | • | • | |
| | Hood insulator | • | • | • | • | |
| | Exhaust, single | • | • | • | • | |
| Transmission | 6-speed manual (4-door / 5-door) | • | -/• | - | -/• | |
| | 6-speed automatic (4-door / 5-door) | - | •/• | • | •/• | |
| Fuel Economy [^] | Manual Transmission: 8.8 L / 100 km City 6.5 L / 100 km Highway 7.8 L / 100 km Combined | | | | | |
| | Automatic Transmission: 8.9 L / 100 km City 6.6 L / 100 km Highway 7.9 L / 100 km Combined | | | | | |
| EXTERIOR | | | | | | |
| Wheels and tires | 14" x 5.0J steel | • | • | - | - | |
| | 16" x 6.0J aluminum alloy | - | - | • | • | |
| | P175/70TR14 | • | • | - | - | |
| | P195/50HR16 | - | - | • | • | |
| | Spare tire | • | • | • | • | |
| Exterior lighting | Headlights with escort function | - | - | - | • | |
| | Automatic headlights | - | - | - | • | |
| | Fog lights | - | - | • | • | |
| | Projection headlights with LED daytime running lights | - | - | - | • | |
| Outside mirrors | Centre High Mount Stop Lamp | • | • | • | • | |
| | Power-adjustable, heated | - | • | • | • | |
| | Body colour | • | • | • | • | |
| Mouldings and trim | Integrated turn signal indicators | - | - | - | • | |
| | Bumpers (front and rear), body colour | • | • | • | • | |
| | Grille, chrome accents | • | • | • | • | |
| | Door handles, body colour | • | • | • | • | |
| | Rear garnish, chrome (5-door only) | • | • | • | • | |
| | Window belt moulding, black | • | • | • | • | |
| Wipers | Rear spoiler, integrated (5-door only) | • | • | • | • | |
| | Front windshield, variable intermittent | • | • | • | • | |
| Other | Rear wiper with washer, 1-speed (5-door only) | • | • | • | • | |
| | Sunroof, power glass tilt-and-slide, safety one-touch | - | - | • | • | |
| INTERIOR | | | | | | |
| Seating | Seating surfaces, cloth | • | • | • | - | |
| | Seating surfaces, premium cloth | - | - | - | • | |
| | 6-way adjustable driver's seat with adjustable head restraint | • | • | • | • | |
| | 4-way adjustable front passenger seat with adjustable head restraint | • | • | • | • | |
| | Driver's seat height adjuster (pump device) | • | • | • | • | |
| | Passenger seatback pocket | • | • | • | • | |
| | Heated front seats | - | • | • | • | |
| | 60/40 split-folding rear seatback with adjustable head restraints (3) (4-door / 5-door) | -/• | • | • | • | |
| | Multimedia | AM/FM/CD/MP3 audio system with four speakers | • | - | - | - |
| | | 172-watt AM/FM/SiriusXM™/CD/MP3 audio system with six speakers | - | • | • | • |
| iPod®/USB and MP3 auxiliary input jacks | | • | • | • | • | |
| AM/FM micro antenna (roof-mounted) | | • | - | - | - | |
| Integrated AM/FM/SiriusXM™ micro antenna (roof-mounted) | | - | • | • | • | |
| Bluetooth® hands-free phone system with voice recognition and steering wheel-mounted | - | • | • | • | | |

• = Standard - = Not Available ◦ = Optional

| | | L | GL | SE | GLS |
|--------------------------------------|----------------------------------------------------------------------------------------------------------------------------|---|----|----|-----|
| INTERIOR (continued) | | | | | |
| Interior | Door trim, cloth inserts | - | • | • | • |
| | Door handles, chrome | - | - | - | • |
| | Sun visors with driver and passenger extensions | • | • | • | • |
| HVAC | Air conditioning, pre-wiring | • | - | - | - |
| | Air conditioning, manual climate control | - | • | • | - |
| | Air conditioning, automatic temperature control | - | - | - | • |
| Steering wheel | Leather-wrapped | - | - | - | • |
| | Tilt | • | • | • | • |
| | Telescopic | - | • | • | • |
| Convenience | Audio controls | - | • | • | • |
| | Cruise control | - | • | • | • |
| | Bluetooth® controls with voice command | - | • | • | • |
| | Trip computer | • | • | • | • |
| | Power windows with driver's auto up/down | - | • | • | • |
| | Power door locks, 2-turn unlock, inside handle override | • | • | • | • |
| | Remote keyless entry system with panic alert | - | • | • | • |
| | Front centre console (sliding armrest storage box) | - | • | • | • |
| | Sunglasses holder | - | • | • | • |
| | Cup holders, dual, front centre console | • | • | • | • |
| 12-volt outlet, centre-stack mounted | • | • | • | • | |
| SAFETY | | | | | |
| | Airbags (6) – Driver and front passenger, dual front seat-mounted side-impact and side-curtain (front and rear passengers) | • | • | • | • |
| | LATCH lower anchors and upper tether anchors for children | • | • | • | • |
| | Child safety locks (rear) | • | • | • | • |
| | Vehicle Stability Management | • | • | • | • |
| | Electronic Stability Control with Traction Control System | • | • | • | • |
| | Anti-Lock Braking System | • | • | • | • |
| | Electronic Brake-force Distribution | • | • | • | • |
| | Brake Assist | • | • | • | • |

For more detailed specifications and information please visit hyundaicanada.com, or visit your dealer today.

TMThe Hyundai name, logos, product names and feature names are trademarks owned by Hyundai Auto Canada Corp.. Specifications, features, illustrations, accessories, materials and equipment and all other information shown are based on the latest information available at the time of publication. Although descriptions are believed to be correct, accuracy cannot be guaranteed. Hyundai Auto Canada Corp. reserves the right to make any changes or modifications at any time, without notice or obligation, including, without limitation, in colour, specifications, features, accessories, materials, equipment and models. [^]Fuel economy figures are based on manufacturer's testing and are used for comparison purposes only. Actual fuel efficiency may vary based on driving conditions and the addition of certain vehicle accessories. The SiriusXM™ name is a trademark of SiriusXM Satellite Radio Inc.. Bluetooth® word mark and logos are registered trademarks owned by Bluetooth SIG, Inc.. All other trademarks and trade names are those of their respective owners.

hyundaicanada.com/accent-4-door
hyundaicanada.com/accent-5-door



^{TM/®}The Hyundai names, logos, product names, feature names, images and slogans are trademarks owned by Hyundai Auto Canada Corp.. Specifications, features, illustrations, accessories, materials and equipment and all other information shown in this brochure are based on the latest information available at the time of publication. Although descriptions are believed to be correct, accuracy cannot be guaranteed. Hyundai Auto Canada Corp. reserves the right to make any changes or modifications at any time, without notice or obligation, including, without limitation, in colour, specifications, features, accessories, materials, equipment and models. Some vehicles are shown with optional equipment. All Hyundai warranties have no deductible. [^]Manual transmission shown. Fuel economy figures are based on manufacturer testing and are used for comparison purposes only. Actual fuel efficiency may vary based on driving conditions and the addition of certain vehicle accessories. [†]Hyundai's Comprehensive Limited Warranty coverage covers most vehicle components against defects in workmanship under normal use and maintenance conditions. ^{**}Hyundai's 24-Hour Roadside Assistance Program is a limited service and does not cover certain costs or expenses. Roadside Assistance is not a warranty. ^{††}The Supplemental Restraint (Airbag) System (SRS) is designed to work with the 3-point seatbelt system. The SRS deploys in certain frontal and/or side impact conditions where significant injury is likely. The SRS is not a substitute for seatbelts, which must still be worn at all times. Children under the age of 13 should be securely restrained in the rear seat. NEVER place a child seat in the front seat of a Hyundai vehicle. [‡]Electronic Stability Control (ESC) and Traction Control System are meant to enhance conscientious driving habits and are not a substitute for safe driving practices. ESC cannot control your vehicle's stability under all driving situations. No system, no matter how advanced, can overcome physics or correct poor driving. Speed, road conditions and driver steering input will affect whether ESC can help prevent loss of control. See Owner's Manual for details. ^{‡‡}Claim based on Autoplanner specification comparison as of October 6, 2016. Vehicle class defined by Global Automakers of Canada segmentation for the Sub-Compact Car segment. ^{‡‡‡}5-door model only, with rear seats up. iPod[®] is a registered trademark of Apple Inc.. The SiriusXM[™] name is a trademark of SiriusXM Satellite Radio Inc.. Bluetooth[®] word mark and logos are registered trademarks owned by Bluetooth SIG, Inc.. All other trademarks and trade names are those of their respective owners.

