

# Santa Fe XL

2018





# Room for 7 explorers.



Answer the call of adventure with confidence and peace of mind in the 2018 Santa Fe XL. With comfortable seating for up to seven, an array of available safety technologies and up to 2,265L of cargo capacity — the 2018 Santa Fe XL finds a way to meet your every expectation. So pack up for your expeditions with ample cargo space and start exploring.





## Power and control.

The 2018 Santa Fe XL is equipped with a powerful 3.3L V6 engine paired to a 6-speed automatic transmission with SHIFTRONIC® manual shift mode, delivering 290 horsepower and 252 lb-ft of torque. Put the power to good use with a confident 5,000 lbs of towing capacity\* to pull your favourite toys, and be ready for adventure in all weather conditions with the available All-Wheel Drive system with Active Cornering Control.

## Convenience and versatility.

Transform the comfortable interior into the ultimate cargo hauler with reclining second-row seats that split-fold 40/20/40 and slide forward for flexible storage options\*, while third-row seats split-fold 50/50 to even further enhance cargo utility. The available Smart Power Liftgate will make it that much more convenient to load and unload your cargo.



Standard audio controls

Available Adaptive Cruise Control with stop-and-go capability



Standard Bluetooth® hands-free phone system

Available heated steering wheel

## Explore in comfort.

Stay connected with friends and family with the standard Bluetooth® hands-free phone system and seamlessly access your favourite smartphone apps thanks to the available Android Auto™ and Apple CarPlay™ connectivity. Accomplish all this in comfort with features such as the standard heated front seats, available heated steering wheel and available 12-way power driver's seat.



3.3L Ultimate model shown. May not be exactly as shown.



Available panoramic sunroof



Available Multi-view Camera System



Standard heated front seats, available ventilated front seats, available heated rear seats



# Forward thinking safety.

Take on your adventures with added peace of mind. The 2018 Santa Fe XL is equipped with a comprehensive package of top safety features, including an array of situational awareness and driver assistance technologies.



Available Blind Spot Detection with Lane Change Assist



Available Rear Cross-Traffic Alert



Available Lane Departure Warning System



Available Autonomous Emergency Braking with Pedestrian Detection



Available High Beam Assist



Available Adaptive Cruise Control with stop-and-go capability



Standard 5.0" touch-screen display with rearview camera



Standard 7 airbags



Learn more at [hyundaicanada.com/2018SantaFeXL](http://hyundaicanada.com/2018SantaFeXL)



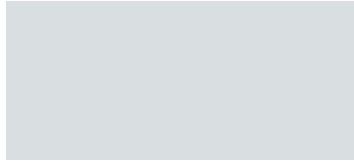
# Colours and wheels

## Exterior Colours

Monaco White



Circuit Silver



Becketts Black



Regal Red Pearl



Iron Frost



Java Espresso



Night Sky Pearl



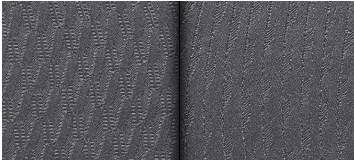
Storm Blue<sup>o</sup>



<sup>o</sup>Available on 3.3L Premium model and above

## Interior Colours

Grey cloth



With YES Essentials<sup>®</sup>  
stain protectant  
Standard on 3.3L model

Black cloth



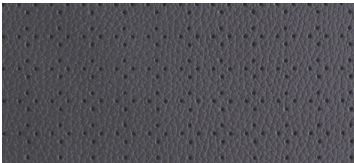
With YES Essentials<sup>®</sup>  
stain protectant  
Standard on 3.3L Premium model

Black leather



Standard on 3.3L Luxury,  
3.3L Limited and 3.3L Ultimate  
models

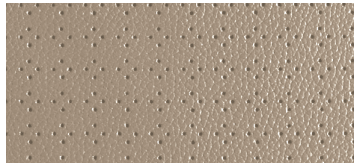
Grey leather



Available on 3.3L Luxury,  
3.3L Limited and 3.3L Ultimate  
models

(Circuit Silver and Becketts Black  
exterior colours only)

Beige leather



Available on 3.3L Luxury,  
3.3L Limited and 3.3L Ultimate  
models

(Monaco White, Becketts Black and  
Regal Red Pearl exterior colours only)

Saddle leather



Available on 3.3L Ultimate model

(Monaco White, Becketts Black,  
Storm Blue and Iron Frost  
colours only)

## Wheels



Standard 18" alloy wheel



Available 19" alloy wheel



# Specifications

- Standard
- Not Available
- Optional

	3.3L	3.3L Premium	3.3L Luxury	3.3L Limited	3.3L Ultimate
<b>Performance</b>					
<b>Engine and transmission</b>					
3.3L GDI V6 engine (290 horsepower, 252 lb-ft torque)	•	•	•	•	•
6-speed automatic with SHIFTRONIC® manual shift mode	•	•	•	•	•
<b>Drive configuration</b>					
Front Wheel Drive (FWD)	•	–	–	–	–
All-Wheel Drive (AWD)	◦	•	•	•	•
<b>Towing capacity</b>					
Maximum towing capacity, with trailer brake				5,000 lbs	
Maximum towing capacity, without trailer brake				1,650 lbs	
<b>Exterior</b>					
<b>Wheels</b>					
Temporary spare tire	•	•	•	•	•
18" x 7.5J alloy wheels	•	•	•	–	–
19" x 7.5J alloy wheels	–	–	–	•	•
<b>Exterior lighting</b>					
Automatic headlights	•	•	•	•	•
LED Daytime Running Lights	•	•	•	•	•
Projection headlights with LED accents	•	•	•	•	•
LED fog lights	–	–	•	•	•
LED tail lights	–	–	–	•	•
HID headlights	–	–	–	•	–
HID headlights with Adaptive Cornering System	–	–	–	–	•
High Beam Assist	–	–	–	–	•
<b>Outside mirrors</b>					
Power activation, body colour, heated with timer	•	•	•	•	•
LED side mirror turn signal repeaters	–	•	•	•	•
<b>Moldings and trim</b>					
Chrome door handles	•	•	•	•	•
Deluxe door scuff plates (aluminum)	–	–	–	•	•
Exterior side door garnish	–	–	–	•	•
<b>Glass</b>					
Solar control tinted glass	•	•	•	•	•
Rear window privacy glass	•	•	•	•	•
Panoramic sunroof	–	–	•	•	•
<b>Wipers</b>					
Windshield wiper de-icer	•	•	•	•	•
<b>Interior</b>					
<b>Seating</b>					
7-passenger capacity	•	•	•	•	•
6-passenger capacity with second-row captain's chairs	–	–	◦	◦	◦
40/20/40 rear bench split (second-row, 7-passenger model only)	•	•	•	•	•
50/50 split bench (third-row)	•	•	•	•	•
Heated front seats	•	•	•	•	•
Rear sliding seats (second-row)	•	•	•	•	•
Remote release cargo area	•	•	•	•	•
Driver's seat power adjustable lumbar support (2-way)	•	–	–	–	–
Cloth seating surfaces	•	•	–	–	–
12-way power-adjustable driver's seat with 4-way lumbar support	–	•	•	•	•
Rear heated seats (second-row)	–	•	•	•	•
Leather seating surfaces	–	–	•	•	•
6-way power-adjustable passenger seat	–	–	•	•	•
Driver's Integrated Memory System for seat and side mirror positions	–	–	•	•	•
Ventilated front seats	–	–	–	•	•



# Specifications

- Standard
- Not Available
- Optional

	3.3L	3.3L Premium	3.3L Luxury	3.3L Limited	3.3L Ultimate
<b>Interior</b>					
<b>Multimedia</b>					
Bluetooth® hands-free phone system	•	•	•	•	•
Rearview camera	•	•	•	•	•
AM/FM/SiriusXM™/CD/MP3 audio system with 5.0" LCD touch-screen display	•	•	-	-	-
8.0" high-resolution touch-screen navigation system	-	-	•	•	•
Android Auto™ and Apple CarPlay™	-	-	•	•	•
Infinity® audio system with 12 speakers	-	-	•	•	•
<b>Interior trim</b>					
Sunvisor with illuminated vanity mirrors and visor extension	•	•	•	•	•
<b>HVAC</b>					
Rear window defroster with timer	•	•	•	•	•
Manual climate control with auto-defogging system	•	-	-	-	-
Dual-zone automatic climate control with CleanAir Ionizer	-	•	•	•	•
Rear seat HVAC ducts (mounted in B-pillar)	-	•	•	•	•
<b>Steering wheel</b>					
Audio (volume, mode, seek), cruise and Bluetooth® hands-free telephone controls	•	•	•	•	•
Manual tilt and telescopic steering column adjustment	•	•	•	•	•
Leather-wrapped steering wheel	-	•	•	•	•
Heated steering wheel	-	•	•	•	•
<b>Convenience</b>					
Cargo area under floor storage	•	•	•	•	•
Power windows with driver's and passenger's auto up/down and pinch protection	•	•	•	•	•
Remote keyless entry system with security alarm	•	•	•	•	•
Cruise control	•	•	•	•	-
Manual rear side window sunshades	-	•	•	•	•
Proximity keyless entry with push-button ignition	-	•	•	•	•
Smart Power Liftgate	-	•	•	•	•
Electrochromic auto-dimming rearview mirror with compass and HomeLink® transceiver	-	-	•	•	•
Adaptive Cruise Control with stop-and-go capability	-	-	-	-	•
<b>Volume (Litres)</b>					
Interior Volume				4,533 L	
Cargo — Behind front seats				2,265 L	
Cargo — Behind second-row seats				1,158 L	
Cargo — Behind third-row seats				382 L	
<b>Safety</b>					
7 Airbags — Driver knee (1), front impact (2), front seat mounted side impact (2), front-rear side curtain (2)	•	•	•	•	•
Anti-lock Braking System with Electronic Brake-force Distribution and Brake Assist	•	•	•	•	•
Electronic Stability Control with Traction Control System	•	•	•	•	•
Vehicle Stability Management	•	•	•	•	•
Blind Spot Detection with Lane Change Assist	-	•	•	•	•
Rear Cross-Traffic Alert	-	•	•	•	•
Rear Parking Assistance Sensors	-	•	•	•	•
Autonomous Emergency Braking with Pedestrian Detection	-	-	-	-	•
Lane Departure Warning System	-	-	-	-	•
Multi-View Camera System	-	-	-	-	•
<b>Fuel Economy (Litres/100km)^</b>					
FWD City / Highway / Combined				12.9 / 9.4 / 11.3	
AWD City / Highway / Combined				13.0 / 9.7 / 11.5	
AWD (Limited and Ultimate models only) City / Highway / Combined				13.9 / 10.8 / 12.5	
Fuel tank capacity				71 L	

# Seating configurations

7-passenger seating



6-passenger seating  
With second-row captain's chairs





# Dimensions

Overall width  
(excluding mirrors)



1,885 mm

Overall length



4,905 mm

Overall height  
(with roof rack)



1,700 mm

# Accessories



**Trailer hitch kit**

Designed to meet your towing needs, a Hyundai hitch can accommodate a wide variety of hitch-mounted accessories. Kit includes: trailer hitch, ball mount and end cap (chrome ball shown not included).



**Premium all-weather floor liners**

Premium all-weather floor liners were designed to cover the interior carpet, providing maximum protection against the elements that other mats cannot offer. Their unique and durable design features a non-slip surface for added comfort and a long-lasting premium look. Remove carpet mats prior to installation.



**Side steps — oval tubes**

These oval side steps were designed to complement the design nature of your Hyundai. They are as attractive as they are functional. Finished in stainless steel, these oval side steps include step pads for secure footing and will look good for years to come.



**Cross rails**

This durable, quick-locking cross rail system lets you transport cargo easily, without sacrificing interior room.

## Our SUV family

The choice is all yours. The Tucson, Santa Fe Sport and Santa Fe XL all offer unique attributes and impressive capabilities that more than measure up to the most stringent of demands. Whether you need seating for up to seven or versatile storage space, each is designed to help make your daily commute enjoyable, safe and inspire adventure with our available advanced All-Wheel Drive system.





# 5

**YEAR/100,000 KM  
Comprehensive Limited Warranty<sup>†</sup>**  
**YEAR/100,000 KM  
Powertrain Warranty**  
**YEAR/100,000 KM  
Emission Warranty**  
**YEAR/UNLIMITED KM  
Roadside Assistance Program<sup>††</sup>**

## One of the best-backed warranties in Canada.

You will see that a number of our vehicles have received multiple awards from the most reputable third-party organizations, so you can take their word when it comes to the quality, design and safety of our vehicles. This quality is equally matched by the quality of our warranty. We stand confidently behind our products to give you ultimate peace of mind with a 5-year/100,000 km Comprehensive Limited Warranty<sup>†</sup>. We also provide a 5-year/Unlimited km Roadside Assistance Program<sup>††</sup> featuring flat tire changing, lockout service and more. Just one toll-free call away, 24 hours a day.

<sup>™/®</sup>The Hyundai name, logos, product names, feature names, images and slogans are trademarks owned or licensed by Hyundai Auto Canada Corp.. Specifications, features, illustrations, accessories, materials and equipment and all other information shown in this brochure are based on the latest information available at the time of publication. Although descriptions are believed to be correct, accuracy cannot be guaranteed. Hyundai Auto Canada Corp. reserves the right to make any changes or modifications at any time, without notice or obligation, including, without limitation, in colour, specifications, features, accessories, materials, equipment and models. Some vehicles are shown with optional equipment. All Hyundai warranties have no deductible. <sup>†</sup>Hyundai's Comprehensive Limited Warranty coverage covers most vehicle components against defects in workmanship under normal use and maintenance conditions. <sup>††</sup>Hyundai's 24-Hour Roadside Assistance Program is a limited service and does not cover certain costs or expenses. Roadside Assistance is not a warranty. <sup>†</sup>7-passenger models only. <sup>\*</sup>With trailer brake. <sup>‡</sup>Android Auto<sup>™</sup> is compatible with Android phones running Android Lollipop or newer. Android Auto may not be available on all devices and is not available in all countries or regions. Additional apps may be required. Subject to app compatibility. Visit [www.android.com](http://www.android.com) for further details and any applicable limitations. Android and Android Auto<sup>™</sup> are trademarks of Google Inc.. <sup>§</sup>Apple CarPlay<sup>™</sup> works with iPhone 5s, iPhone 5c, iPhone 5 and later models running the latest version of iOS 7 and above. CarPlay<sup>™</sup> may not be available on all devices and may not be available in all countries or regions. Subject to app compatibility. Visit [www.apple.com](http://www.apple.com) for further details and any applicable limitations. Apple, Apple CarPlay and iPod are trademarks of Apple Inc.. The SiriusXM<sup>™</sup> name is a trademark of SiriusXM Satellite Radio Inc.. Bluetooth<sup>®</sup> word mark and logos are registered trademarks owned by Bluetooth SIG, Inc.. HomeLink<sup>®</sup> is a registered trademark of Johnson Controls Inc.. YES Essentials<sup>®</sup> is a registered trademark of Sage Automotive Interiors. Infinity<sup>®</sup> is a registered trademark of Harman International, Inc.. All other trademarks and trade names are those of their respective owners.

018SA-L100R

**Hyundai Auto Canada Corp.**  
[hyundaicanada.com](http://hyundaicanada.com)

