

April 26, 2018

 British Columbia



**Rear Spoiler**  
\$599.00

Manufactured from high-quality, lightweight materials, the 86 rear spoiler features precisely sculpted detail to add a sporty, integrated appearance to the vehicle. Paint color is matched to the vehicle's color palette and paint quality meets factory specifications for appearance and performance.



**TRD 18" Alloy Wheel (Staggered Fitment)**

\$1,492.00

These TRD 18-in. x 7-in. front and 18-in. x 7.5-in. rear staggered fit, cast alloy wheels were designed specifically for the Toyota 86, featuring a snap-in TRD logo center cap along with a black matte finish. Allowing the owner the option of a plus-size wheel upgrade, these wheels incorporate the proper weight, offset and brake clearance to ensure proper fit, finish and reliability. Specs: - Both with 35-mm. offset, a 5-on-100-mm. bolt circle [P.C.D.] and a 56-mm. center bore - Tire Pressure Monitoring System (TPMS) ready Recommended tire size: 215/40R18 (front) and 225/40R18 (rear) (Tires not included)



**Armrest**  
\$396.50

Give your Toyota 86 an additional measure of comfort and style with the centre armrest. The ergonomically designed, centre-mounted armrest matches the vehicle's interior and slides out of the way when necessary. • Track system allows armrest to slide from forward to rear, giving easy access to the cup holder. • Matching finish with gunmetal gray contrasting stitching complements the interior trimming. • Provides comfortable arm support.



**Rear Bumper Appliqué**  
\$106.50

Prevent scrapes and scratches from daily vehicle use with Toyota's Rear Bumper Appliqué. It is specifically designed to maintain your vehicle's flawless bumper surface. This durable, clear and UV-resistant protection film is custom fitted to your vehicle and is stylishly outfitted with the Toyota logo. It's the stain, chemical and fuel resistant barrier your paint has been waiting for.



**Side Window Deflectors**  
\$187.50

The Toyota Genuine Side Window Deflectors are aerodynamically shaped to minimize wind noise and buffering when driving with open windows. The deflectors are designed to integrate flawlessly with your vehicle, while maintaining its sleek look. Breathe in the fresh air without having to worry about wind, rain or the cold Canadian snow.



**Cargo Liner**  
\$150.50

Protection for a long-lasting cargo area. This durable, long-lasting custom designed vinyl liner features a raised lip to contain spills for simple cleanup. Textured finish minimizes load shifting and the cargo area carpeting gets extra protection for wear and tear. The easy-to-install liner is equally simple to remove for cleaning. It's the ideal place for storing wet and dirty cargo. Consider it the ultimate way to protect the vehicle interior from scratches and spills.



**LED Fog Light Kit**  
\$660.00

- Enhances style and functionality of the vehicle
- Seamless integration of fog lamps into bumper
- Helps provide visibility in severe inclement weather conditions and night driving
- Designed to complement the vehicle's exterior lines
- Helps provide added measure of security
- Wide-angle high intensity LED lights



**Pro Series Paint Protection Film**  
\$430.00

Guard your vehicle from weathering, UV radiation and road debris that can chip and scratch the finish with 3M Pro Series Genuine Toyota Paint Protection Film. This durable and nearly invisible thermoplastic urethane is designed to protect the hood and front fenders to maintain a like-new appearance. Backed by a 10 year limited warranty.



**Premium Display Audio with Navigation**  
\$1,183.00

Your search is over. With Toyota Premium Audio<sup>1</sup> with Navigation<sup>2</sup>, you'll get the assurance of dynamic maps with route overlay and turn-by-turn directions to your destination with geo-located points of interest. • Toyota Premium Audio with Navigation features Aha™, available from Harman on iTunes<sup>®3</sup> and Google Play<sup>®4</sup> • Push-to-Talk recognizing navigation, media, and phone commands, including a new one-shot destination feature, which allows you to say the entire address without pausing

For calculation purposes, all accessory pricing includes installation (if required). However, because the cost of doing business varies, the installation portion of the price may not be the exact cost of installation at a dealership. Please confirm accessory pricing with your dealership. Price does not include taxes.



**TRD Sway Bars**  
\$934.50

Engineered by TRD to enhance the vehicle's handling characteristics, the sway bars provide a flatter, more stable cornering stance, reducing front wheel slip and limiting body roll without adding harshness to the ride. Constructed of high-quality alloy steel, the sway bars feature a gloss red powder coat finish that resists corrosion and protects against road damage, while providing a striking visual enhancement to the underbody of the vehicle.



**Hood Deflector**  
\$186.00

Made from thick high-grade tinted acrylic, the Hood Deflector offers high impact resistance and reduces the potential damage to your hood from road debris. The stylish wraparound design complements the vehicle's appearance while providing extra side protection.



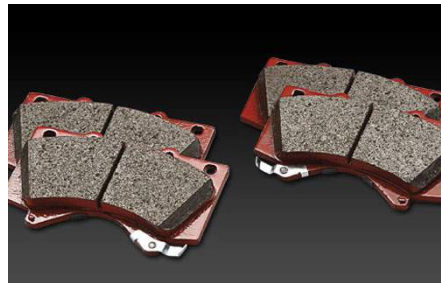
**TRD Lowering Springs**  
\$1,077.50

TRD lowering springs lower the 86's centre of gravity by approximately 1" (1 1/8-in.) front and rear, enhancing the vehicle's on-road performance through quicker turn-in, enhanced steering response and improved cornering ability. Featuring TRD-developed proprietary spring rates (linear in front, progressive in rear) and designed to work with stock struts and shock absorbers. Installation includes wheel alignment.



**TRD Performance Brake Pads - Rear**  
\$182.00

TRD's high-performance, high-friction brake pads are made from an aramid-and ceramic-strengthened compound, delivering an optimum combination of cold and hot friction, along with a high maximum operating temperature and low noise levels. Delivering increased braking performance while decreasing brake fade during repeated stops or extended downhill driving, TRD brake pads are engineered to minimize brake noise and enhance stopping power.



**TRD Performance Brake Pads - Front**  
\$213.00

TRD's high-performance, high-friction brake pads are made from an aramid-and ceramic-strengthened compound, delivering an optimum combination of cold and hot friction, along with a high maximum operating temperature and low noise levels. Delivering increased braking performance while decreasing brake fade during repeated stops or extended downhill driving, TRD brake pads are engineered to minimize brake noise and enhance stopping power.



**Toyota Genuine Dash Camera**  
\$682.50

The Toyota Genuine Dash Camera is designed to provide a safe and memorable driving experience in your Toyota vehicle. Safely record the on-goings of the open road while keeping your eyes on the road. Never miss a moment in motion; capture it! The Toyota Genuine Dash Camera will also allow you to record the surroundings of your vehicle while it is parked.



**Block Heater**  
\$485.00

This custom-designed Block Heater not only warms your vehicle up quicker, but also reduces engine strain and wear. The system also helps to save fuel and battery power during startups, and the strain relief electrical cord reduces cord damage.



**TRD Air Filter**  
\$111.50

Pre-oiled and ready to install. Washable and reusable. This exact drop-in replacement filter will last the life of the vehicle, provide unrivalled engine protection and increase air flow.



**TRD Performance Air Intake**  
\$576.50

Like a living thing, an engine needs to breathe. Increase the quality of air that flows to your powerplant and quantifiably increase its performance with the TRD Performance Air Intake. Features reusable TRD high-flow air filter Dyno-tested to deliver an increase in both horsepower and torque for improved acceleration. Designed to work with the factory ECU and emissions system. Tested according to TRD's stringent performance standards.



**TRD Exhaust System**  
\$1,526.50

The TRD performance exhaust provides a deeper and more powerful engine sound that enhances both the presence and appearance of the 86. Constructed entirely of stainless steel, the TRD performance exhaust maintains high factory quality standards for performance and strength, meets all noise limit requirements and features a polished muffler with a double-walled, wide-diameter slant-cut exhaust tip and rolled edge. Plus, the TRD logo is stamped on the top of the polished exhaust tip.

For calculation purposes, all accessory pricing includes installation (if required). However, because the cost of doing business varies, the installation portion of the price may not be the exact cost of installation at a dealership. Please confirm accessory pricing with your dealership. Price does not include taxes.