



ALL-NEW 2013
DART

*HERE'S TO A BRAND THAT STANDS FOR STANDING OUT. A BRAND WITH NEARLY A CENTURY OF INNOVATION, PASSION, AND STYLE AS ITS FOUNDATION. A BRAND WITH THE INHERENT BELIEF THAT YOUR VEHICLE SHOULD MOVE YOU IN MORE WAYS THAN ONE. HERE'S TO MERGING A DEEP-ROOTED PERFORMANCE HERITAGE WITH THE TECHNOLOGY TO BACK IT UP. AFTER ALL, THIS IS A BRAND THAT NEVER STOPS SEEKING. NEVER STOPS EVOLVING. NEVER STOPS LOOKING FORWARD. AND EVERYTHING DODGE HAS BUILT ITS LEGACY ON IS EMBODIED IN THE SPIRIT OF ITS NEWEST FAMILY MEMBER – THE GROUNDBREAKING 2013 DODGE DART. IT STARTS WITH UNMISTAKABLE DODGE DESIGN AND BUILDS OFF OF THE WORLD-CLASS ARCHITECTURE AND REFINED PERFORMANCE DNA OF ALFA ROMEO. BORN TO PERFORM. SCULPTED FOR EFFICIENCY AND BOLDNESS. DESTINED TO BE FUN. **THE ALL-NEW 2013 DODGE DART.***



GROUNDBREAKING ALL-NEW DODGE DART, BRINGING FEATURES AND BENEFITS NEVER BEFORE OFFERED IN A COMPACT CAR • UNMISTAKABLE STYLE • ALFA ROMEO DNA
• CLASS-LEADING¹ SAFETY & TECHNOLOGY • UNSURPASSED GASOLINE POWERTRAIN COMBINATIONS IN ITS CLASS² • MID-SIZE INTERIOR ROOM • OVER 100,000 WAYS
TO CUSTOMIZE • CLASS-LEADING³ COMBINATION OF POWER AND FUEL EFFICIENCY – UP TO 41 HIGHWAY MPG⁴ AND 184 LB.-FT OF TORQUE • NAMED ONE OF WARD'S
10 BEST INTERIORS FOR 2012

*As with all cars, the benefits of these features and technologies may be limited under the best case. †Fuel EPA mileage estimation not available at time of publication. See for comparison purposes only.







OVER 100,000

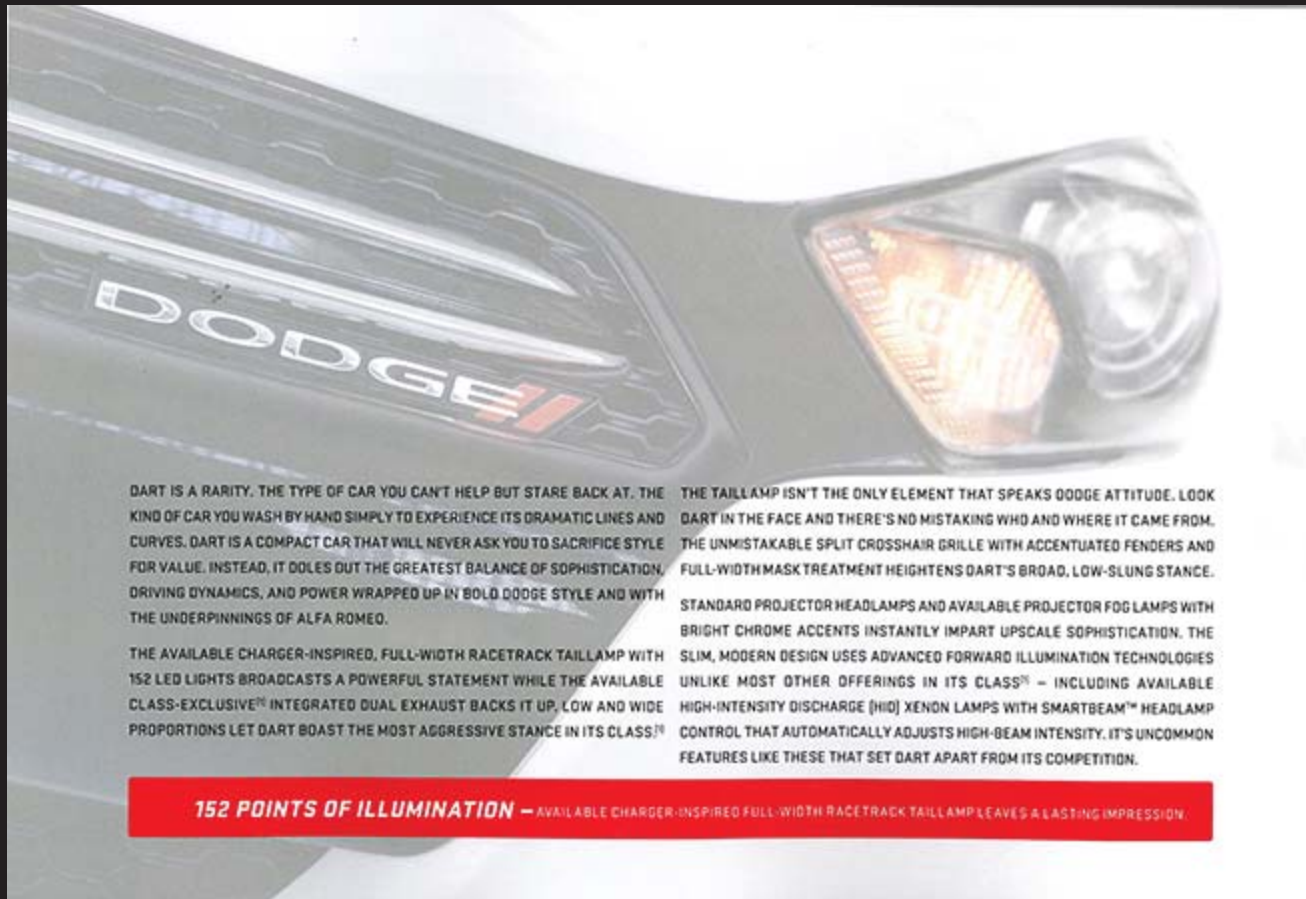


WAYS //
TO MAKE DART YOUR OWN.



DESIGNED TO BE CUSTOMIZED. THERE ARE OVER 100,000 DIFFERENT WAYS TO PUT YOUR SPIN ON THE DETAILS. SELECT BETWEEN SIX PERFECTLY TAILORED MODELS, 12 BRILLIANT COLORS, 14 STRIKING INTERIOR COLOR AND TRIM COMBINATIONS, THREE ENGINES, THREE TRANSMISSIONS, AND A HOST OF MOPAR® PARTS AND ACCESSORIES. ANY WAY YOU CUT IT, THE ALL-NEW DART IS GOING TO LEAVE ITS MARK.





DART IS A RARITY. THE TYPE OF CAR YOU CAN'T HELP BUT STARE BACK AT. THE KIND OF CAR YOU WASH BY HAND SIMPLY TO EXPERIENCE ITS DRAMATIC LINES AND CURVES. DART IS A COMPACT CAR THAT WILL NEVER ASK YOU TO SACRIFICE STYLE FOR VALUE. INSTEAD, IT DOLES OUT THE GREATEST BALANCE OF SOPHISTICATION, DRIVING DYNAMICS, AND POWER WRAPPED UP IN BOLD DODGE STYLE AND WITH THE UNDERPINNINGS OF ALFA ROMEO.

THE AVAILABLE CHARGER-INSPIRED, FULL-WIDTH RACETRACK TAILLAMP WITH 152 LED LIGHTS BROADCASTS A POWERFUL STATEMENT WHILE THE AVAILABLE CLASS-EXCLUSIVESM INTEGRATED DUAL EXHAUST BACKS IT UP. LOW AND WIDE PROPORTIONS LET DART BOAST THE MOST AGGRESSIVE STANCE IN ITS CLASS.SM

THE TAILLAMP ISN'T THE ONLY ELEMENT THAT SPEAKS DODGE ATTITUDE. LOOK DART IN THE FACE AND THERE'S NO MISTAKING WHO AND WHERE IT CAME FROM. THE UNMISTAKABLE SPLIT CROSSHAIR GRILLE WITH ACCENTUATED FENDERS AND FULL-WIDTH MASK TREATMENT HEIGHTENS DART'S BROAD, LOW-SLUNG STANCE.

STANDARD PROJECTOR HEADLAMPS AND AVAILABLE PROJECTOR FOG LAMPS WITH BRIGHT CHROME ACCENTS INSTANTLY IMPART UPSCALE SOPHISTICATION. THE SLIM, MODERN DESIGN USES ADVANCED FORWARD ILLUMINATION TECHNOLOGIES UNLIKE MOST OTHER OFFERINGS IN ITS CLASSSM - INCLUDING AVAILABLE HIGH-INTENSITY DISCHARGE (HID) XENON LAMPS WITH SMARTBEAM™ HEADLAMP CONTROL THAT AUTOMATICALLY ADJUSTS HIGH-BEAM INTENSITY. IT'S UNCOMMON FEATURES LIKE THESE THAT SET DART APART FROM ITS COMPETITION.

152 POINTS OF ILLUMINATION - AVAILABLE CHARGER-INSPIRED FULL-WIDTH RACETRACK TAILLAMP LEAVES A LASTING IMPRESSION.





WORLD-CLASS ARCHITECTURE

IT'S ENGINEERING WITHOUT COMPROMISE AND UNCOMMON, PREMIUM DETAILS THAT SET DART APART. THE PROOF STARTS WITH AN INCREDIBLY STIFF STRUCTURE WITH 60% ADVANCED HIGH-STRENGTH, HOT-STAMPED STEEL – ONE OF THE HIGHEST LEVELS IN THE INDUSTRY. THIS PROVIDES OUTSTANDING PASSENGER PROTECTION AND ALSO THE ABILITY TO OPTIMALLY TUNE THE SUSPENSION FOR BETTER HANDLING AND ROAD FEEL, WHILE ALSO REDUCING INTERIOR NOISE, VIBRATION AND MARSHNESS (NVH).

A SLEEK, LASER-BRAZED ROOF ELIMINATES ROOF DITCH MOLDINGS FOR A PURELY PREMIUM APPEARANCE. THE "TRAPPED" HOOD DESIGN FOLLOWS DART'S FRONT SILHOUETTE, WHILE DELIVERING PRECISION CRAFTSMANSHIP AND ADDED AERODYNAMIC EFFICIENCY.

THE SIGNATURE DODGE GRILLE BOASTS AN AVAILABLE ACTIVE GRILLE SHUTTER SYSTEM THAT INCLUDES A SERIES OF HORIZONTAL SLATS HOUSED BEHIND THE LOWER FASCIA OPENING. WHEN COOLING IS LEAST NEEDED, THE SLATS AUTOMATICALLY CLOSE AIRFLOW THROUGH THE LOWER INTAKE AND REDIRECT IT AROUND THE FRONT OF THE VEHICLE FOR A 10 PERCENT REDUCTION IN DRAG AND BETTER AERO-PERFORMANCE.

UNLIKE MOST OTHER VEHICLES IN THE SEGMENT,¹ DART CAN BE OUTFITTED WITH FULL-LENGTH BELLY PANS. BY ENCLOSING DART'S UNDERBODY, THESE FULL-LENGTH PANS CONTRIBUTE TO THE EXCEPTIONAL AERODYNAMIC PERFORMANCE AND HELP KEEP ROAD NOISE OUT OF THE CABIN.

CLASS-EXCLUSIVESM HYPER BLACK WHEELS OR POLISHED ALUMINUM WHEELS ARE JUST A FEW OF SEVEN WHEEL CHOICES AVAILABLE ON DART. WHETHER YOUR INDIVIDUAL STYLE CALLS FOR SOMETHING FERCE, SPORTY, OR CUSTOM IN APPEARANCE, DART HAS YOU COVERED WITH WHEEL OPTIONS RANGING FROM 16- TO 18 INCHES.



// AVAILABLE CLASS-EXCLUSIVESM HYPER BLACK WHEELS



SETTING A NEW STANDARD

EVERY DETAIL, EVERY SURFACE, EVERY TOUCH POINT HAS BEEN SCRUTINIZED TO MAKE SURE IT LOOKS AND FEELS PERFECT. THE END RESULT? AN ATMOSPHERE OF TECHNOLOGY, COMFORT, AND STYLE IN A PACKAGE CONSTRUCTED WITHOUT COMPROMISE. THIS IS THE NEW STANDARD FOR COMPACT CARS.

DESIGNED WITH INGENUITY THAT REGARDS PERSONAL SPACE AS A NECESSITY AND NOT A LUXURY, DART OFFERS BEST-IN-CLASSSM SHOULDER ROOM, BEST-IN-CLASSSM HIP ROOM, AND MORE REAR-SEAT LEGROOM THAN SOME MID-SIZE CARS. EVEN WITH ITS COMPACT CAR DIMENSIONS, DART HAS AN ABUNDANCE OF OVERALL PASSENGER INTERIOR VOLUME TO BE OFFICIALLY CLASSIFIED BY THE EPA AS A MID-SIZE SEDAN.

WHEN YOU HAVE A COMPACT CAR WITH INTERIOR ROOM THAT RIVAL A MID-SIZE SEDAN, THE STORAGE OPPORTUNITIES MULTIPLY. THE OVERSIZED GLOVE BOX IS DEEP ENOUGH TO SECURE A LAPTOP OR A TABLET. THE AVAILABLE CLASS-EXCLUSIVESM FRONT-PASSENGER IN-SEAT STORAGE KEEPS ITEMS NEATLY STOWED AND OUT OF

SIGHT. DOOR MAP POCKETS ARE EASILY WITHIN REACH WHILE SADDLE CUBBIES LOCATED ON BOTH SIDES OF THE CENTER CONSOLE ARE PERFECT FOR SMALLER ITEMS SUCH AS PERSONAL HANDHELD DEVICES. THE CENTER CONSOLE STORAGE BIN FEATURES USB AND AUXILIARY POWER OUTLETS. THE AVAILABLE 60/40 SPLIT-BENCH REAR SEAT OFFERS TRUNK PASS-THROUGH AND AN ARMREST WITH CUP HOLDERS AND HIDDEN STORAGE.

WITH ITS PROPORTIONS PERFECTED, DESIGNERS TOOK A CLEAN-SHEET APPROACH, BLENDING SOFT-TOUCH SURFACES, TACTILE GRAINS, AND BURSTS OF COLOR WITH PRECISION CRAFTSMANSHIP, AND AVAILABLE STATE-OF-THE-ART TECHNOLOGY AND HAND-WRAPPED LEATHER TOUCHES. WITH 14 INTERIOR COLOR AND TRIM COMBINATIONS TO SELECT FROM, PERSONALIZING YOUR DART IS JUST ONE MORE WAY TO SET YOURSELF APART. INDULGE IN AVAILABLE PREMIUM AMENITIES INCLUDING NAPPA LEATHER TRIM, HEATED SEATS, AND A CLASS-EXCLUSIVESM HEATED STEERING WHEEL FOR AN EVEN TIGHTER-TUNED INTERIOR.

MAKE IT YOUR OWN — CHOOSE FROM 14 STRIKING INTERIOR COLOR AND TRIM COMBINATIONS.



// NAMED ONE OF WARD'S 10 BEST INTERIORS FOR 2012

ONLY IN A DART. THE AVAILABLE CLASS-EXCLUSIVE¹ 7-INCH THIN FILM TRANSISTOR (TFT) RECONFIGURABLE DISPLAY DELIVERS REAL-TIME INFORMATION ON PERFORMANCE, NAVIGATION, AND VEHICLE STATUS IN FULL COLOR AND IN INCREDIBLY RICH GRAPHICS. THE ABILITY TO CUSTOMIZE IS ALMOST LIMITLESS. OPT BETWEEN ANALOG OR DIGITAL SPEEDMETER APPEARANCES, TRACK CURRENT AND AVERAGE FUEL ECONOMY, VIEW VIVID TURN-BY-TURN NAVIGATION INFORMATION AND RECEIVE ALERTS WITH AVAILABLE BLIND SPOT MONITORING (BSM)². CYCLE THROUGH MULTIPLE MENU ITEMS WITH SIMPLE STEERING WHEEL-MOUNTED CONTROLS. THE TFT IS JUST ONE OF MANY FEATURES THAT MAKE DART THE MOST TECHNOLOGICALLY ADVANCED CAR IN ITS CLASS.³







CRANK THE MUSIC, MAKE A PHONE CALL, SET THE SPEED CONTROL, OR RECONFIGURE THE AVAILABLE CLASS-EXCLUSIVE™ 7-INCH THIN FILM TRANSISTOR (TFT) DISPLAY, ALL WHILE KEEPING YOUR HANDS ON THE THICK-RIM THREE-SPOKE STEERING WHEEL WITH AVAILABLE STEERING WHEEL-MOUNTED AUDIO CONTROLS. OPT FOR THE AVAILABLE CLASS-EXCLUSIVE™ HEATED STEERING WHEEL AND THERE'S ONE MORE REASON TO KEEP YOUR HANDS ON THE WHEEL.







THE MOST TECHNOLOGICALLY ADVANCED VEHICLE IN ITS CLASS¹

THE ALL-NEW 2013 DODGE DART WELCOMES ITS DRIVERS WITH A WEALTH OF STATE-OF-THE-ART EQUIPMENT, SAVVY FASHION-FORWARD INTERIOR DESIGN, AND PRECISION CRAFTSMANSHIP.

UNDER A DIE-CUT, MACHINE-SEWN, AND HAND-WRAPPED BROW LIE INSTRUMENT GAUGES AND AN AVAILABLE CLASS-EXCLUSIVE¹ 7-INCH THIN FILM TRANSISTOR (TFT) RECONFIGURABLE FULL-COLOR CLUSTER DISPLAY. THE DISPLAY NOT ONLY DELIVERS REAL-TIME INFORMATION ON PERFORMANCE, TURN-BY-TURN NAVIGATION, AND VEHICLE STATUS, IT BOASTS COUNTLESS WAYS TO RECONFIGURE THE DATA IN FULL COLOR AND RICH GRAPHICS NEVER BEFORE SEEN IN A COMPACT CAR.

A FLOATING ISLAND BEZEL (FIB) TRIMMED WITH RUBY RED LED AMBIENT LIGHT SURROUNDS THE TFT CLUSTER DISPLAY AND AVAILABLE CLASS-EXCLUSIVE¹ UCONNECT[®] 8.4-INCH TOUCH-SCREEN RADIO. A HALO OF RUBY RED LED LIGHTING ALSO GLOWS BEHIND THE VENTILATION CONTROLS, CREATING AN ATMOSPHERE THAT SEPARATES DART FROM ALL OTHERS.



THE AVAILABLE LED AMBIENT INTERIOR LIGHTING BRINGS ILLUMINATION TO DOOR HANDLES, MAP POCKETS, FOOTWELLS, FRONT CUP HOLDERS, AND CUBBY AREA.



// AVAILABLE CLASS-EXCLUSIVE™ FRONT-PASSENGER IN-SEAT STORAGE.



UCONNECT ENTERTAINMENT

Uconnect

CLASS-EXCLUSIVE 8.4-INCH TOUCH SCREEN

AS THE MOST TECHNOLOGICALLY ADVANCED CAR IN ITS CLASS,¹ DART WITH UCONNECT[®] KEEPS YOU CLOSE TO YOUR FAVORITE PEOPLE, MUSIC, AND PLACES.

THE AWARD-WINNING AVAILABLE LARGEST-IN-CLASS² 8.4-INCH TOUCH SCREEN FEATURES EASY-TO-NAVIGATE ICONS FOR RADIO AND SIRIUSXM[™] SATELLITE RADIO³ CONTROLS, PERSONAL DEVICES SUCH AS AN IPOD[®] OR SMARTPHONE, CLIMATE CONTROLS, AND AVAILABLE NAVIGATION AND BLUETOOTH[®] COMPATIBLE PHONES. BRING ALONG YOUR OWN TUNES VIA REMOTE SD CARD, REMOTE USB PORT WITH IPOD MOBILE DEVICE CONTROL, OR BLUETOOTH WIRELESS STREAMING. THE USB PORT CAN ALSO CHARGE YOUR COMPATIBLE DEVICES.

WITH AVAILABLE VOICE COMMAND⁴ AND FRONT- AND REAR-MOUNTED STEERING WHEEL CONTROLS, THERE'S NO TAKING YOUR HANDS OFF THE WHEEL OR EYES OFF THE ROAD. GIVE VOICE COMMANDS FOR THINGS LIKE PHONE OPERATION, RADIO/CD FUNCTIONS, AND ACCESSING YOUR DIGITAL MEDIA PLAYERS.

OPT FOR GARMIN[®] NAVIGATION FOR TURN-BY-TURN DIRECTIONS, LANE⁵ GUIDANCE, OR LOCATING NEARBY RESTAURANTS, SHOPPING, HOSPITALS, OR LOCAL POINTS OF INTEREST. ADD AVAILABLE SIRIUSXM TRAFFIC[™] FOR COMPREHENSIVE TRAFFIC INFORMATION DIRECTLY TO YOUR DART. THIS INCLUDES CONTINUOUSLY UPDATED INFORMATION ON TRAFFIC SPEED AND FLOW, ACCIDENTS, CONSTRUCTION, AND ROAD CLOSURES.

CHOOSE SIRIUSXM TRAVEL LINK[™] TO BRING NATIONAL WEATHER FORECASTS, FUEL PRICES FOR LOCAL GAS STATIONS, IN-GAME AND FINAL SPORTS SCORES, WEEKLY SPORTS SCHEDULES, LOCAL MOVIE THEATER LISTINGS, AND LOCAL SKI CONDITIONS RIGHT TO YOUR VEHICLE.

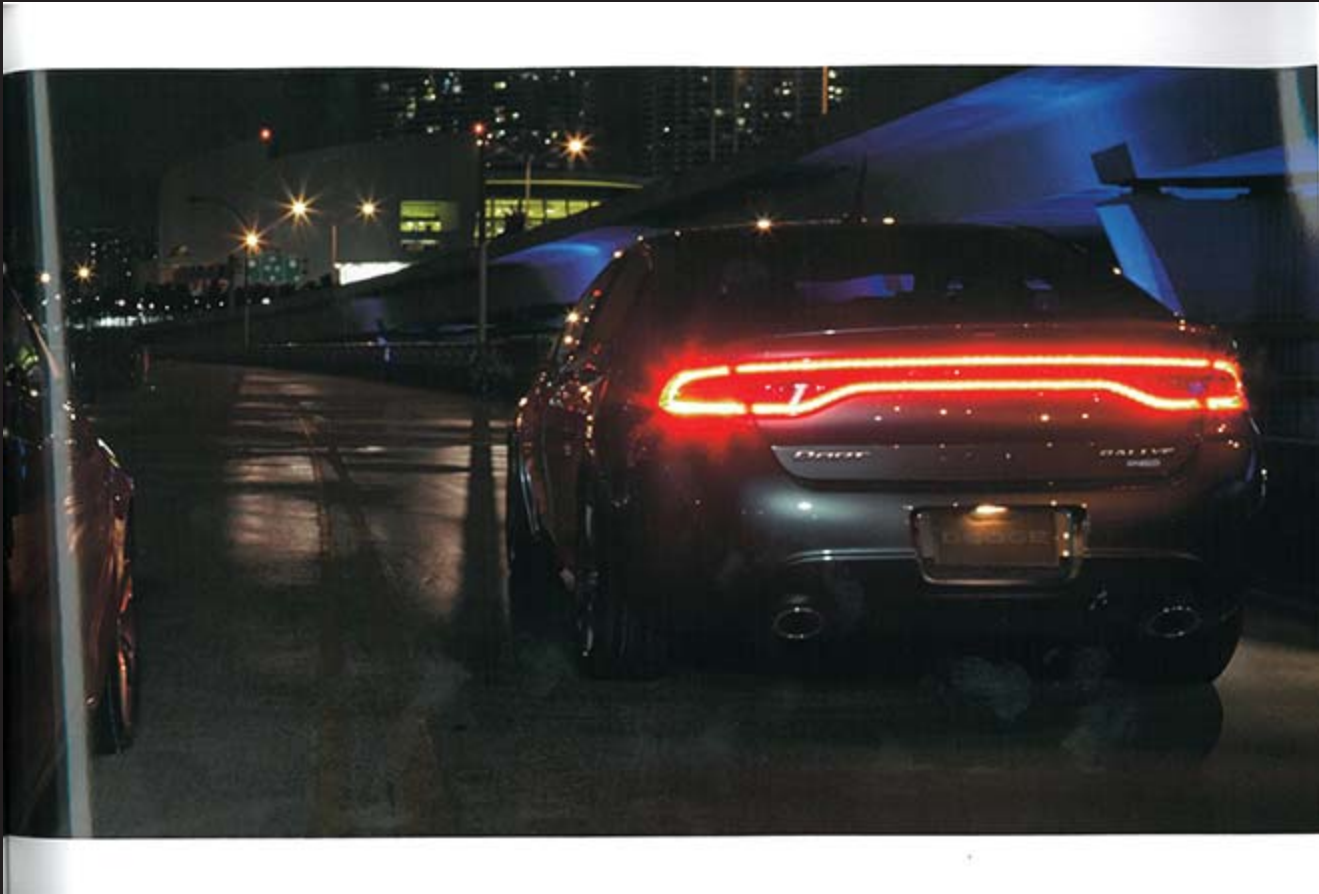
Your pair of services is included at no extra charge.



CONNECTIVITY



// AVAILABLE CLASS-EXCLUSIVE™ RACETRACK LED TAILLAMP AND INTEGRATED DUAL EXHAUST.



POWER TO THE PEOPLE

DODGE DART REDEFINES PERFORMANCE BY PROVIDING ITS DRIVERS WITH THE POWER OF CHOICE. NO OTHER VEHICLE IN ITS CLASS OFFERS MORE GASOLINE POWERTRAIN COMBINATIONS.¹ CHOOSE FROM THREE STATE-OF-THE-ART 4-CYLINDER ENGINES – A NEW 16-VALVE 2.0-LITER TIGERSHARK;² A 16-VALVE 1.4-LITER INTERCOOLED TURBO WITH MULTIAIR³ OR A NEW 16-VALVE 2.4-LITER TIGERSHARK WITH MULTIAIR II.⁴ ALL ENGINES ARE TUNED TO DELIVER EXCELLENT HORSEPOWER AND TORQUE RATINGS COMBINED WITH IMPRESSIVE FUEL EFFICIENCY. AN EQUAL AMOUNT OF ATTENTION APPLIED TO PERFORMANCE WAS MATCHED BY EFFORTS TO ENHANCE EACH ENGINE'S DURABILITY, LIMIT ENVIRONMENTAL IMPACT, REDUCE MAINTENANCE AND, IN SHORT, TO MAKE SURE THE ALL-NEW DART IS A COMPACT CAR YOU WILL LOOK FORWARD TO DRIVING.

2.0L DDHC 16-VALVE TIGERSHARK WITH VARIABLE VALVE TIMING (VVT) – DELIVERING AN IMPRESSIVE 160 HORSEPOWER* AND 148 LB-FT OF TORQUE.* THIS ALL-NEW ENGINE IS TUNED TO BRING IMPRESSIVE LOW- AND MID-RANGE TORQUE FOR GREATER DRIVABILITY AND OVERALL FUEL EFFICIENCY. STANDARD ON SE, SXT, RALLYE, AND LIMITED.

1.4L SOHC 16-VALVE INTERCOOLED TURBO WITH MULTIAIR – THIS TURBO KICKS OUT 160 HORSEPOWER* AND AN IMPRESSIVE 184 LB-FT OF TORQUE* FROM 2500-4000 RPM. WITH 114 HORSEPOWER PER LITER, THIS MULTIAIR TURBO OFFERS THE ULTIMATE COMBINATION OF POWER AND FUEL EFFICIENCY. STANDARD ON DART AERD; AVAILABLE ON DART SXT, RALLYE, AND LIMITED.

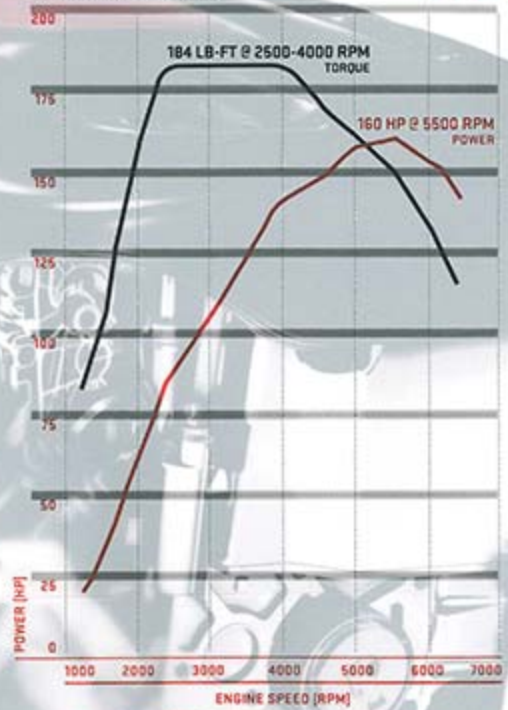
2.4L SOHC 16-VALVE TIGERSHARK WITH MULTIAIR II – A BRILLIANT COMBINATION OF CHRYSLER GROUP LLC DESIGN AND ENHANCED MULTIAIR TECHNOLOGY FROM FIAT® RESULTS IN 184 HORSEPOWER* AND 171 LB-FT OF TORQUE.* STANDARD ON R/T.

SEGMENT-EXCLUSIVE⁵ MULTIAIR TECHNOLOGY – CYLINDER BY CYLINDER AND STROKE BY STROKE, THIS TECHNOLOGY DELIVERS OPTIMUM COMBUSTION AT ANY SPEED UNDER ALL DRIVING CONDITIONS BY ALLOWING DIRECT AND DYNAMIC CONTROL OF AIR INTAKE AND COMBUSTION. THE RESULT IS UP TO A 15 PERCENT INCREASE IN LOW ENGINE RPM TORQUE AND UP TO A 7.5 PERCENT IMPROVEMENT IN FUEL EFFICIENCY. 1/2014

CLASS-LEADING⁶ COMBINATION OF POWER AND FUEL EFFICIENCY.

1.4L TURBO WITH MULTI AIR®

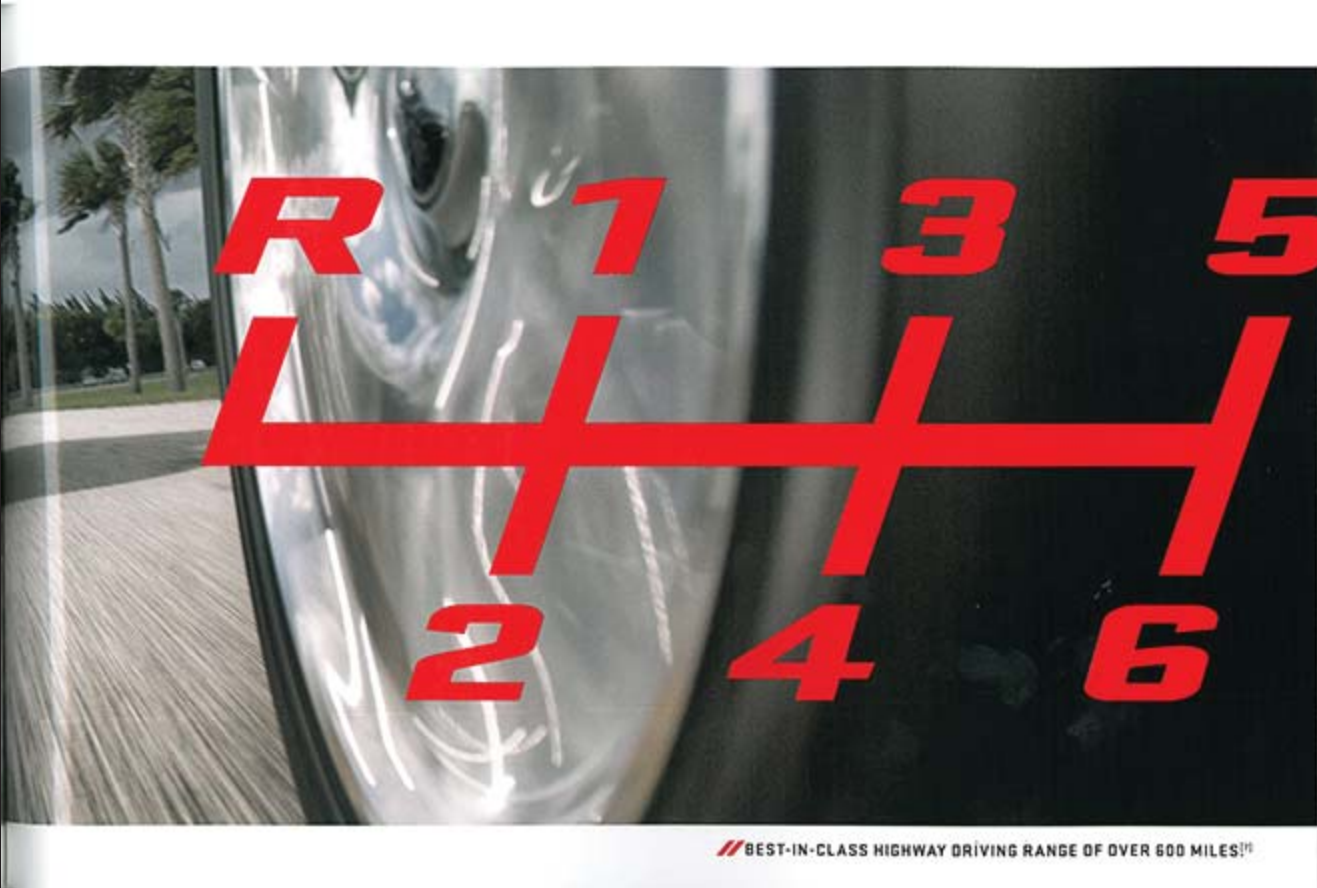
PERFORMANCE RATING



NET ENGINE OUTPUT OBTAINED AND CORRECTED IN ACCORDANCE WITH SAE J1349 MAR 2006



THE MOST ADVANCED LINE OF TRANSMISSIONS IN ITS CLASS. NO MATTER WHICH TECHNOLOGICALLY ADVANCED, POWERFUL, AND FUEL-EFFICIENT ENGINE YOU CHOOSE, YOU'LL BE REWARDED WITH YOUR CHOICE OF A HIGHLY ADVANCED 6-SPEED TRANSMISSION. STANDARD ON ALL MODELS IS A CLOSE-RATIO 6-SPEED MANUAL TRANSMISSION. AN AVAILABLE POWERTECH 6-SPEED AUTOMATIC TRANSMISSION CAN BE MATED TO THE 2.0-LITER OR 2.4-LITER ENGINES. OR OPT FOR AN ADVANCED 6-SPEED DUAL DRY CLUTCH TRANSMISSION (DDCT) ON THE 1.4-LITER TURBO. THE DDCT ELIMINATES THE NEED FOR HYDRAULICS FOR A 10 PERCENT IMPROVEMENT IN FUEL EFFICIENCY.





 **ONLY IN A DART...**

41 MPG⁽²⁾ WITH MID-SIZE INTERIOR ROOM
AND A PASSION FOR THE ROAD

Circle estimated 41 highway mpg. Actual mileage will vary. Turbo engine and 5-speed manual transmission. Final EPA mileage estimation not available at time of publication. Use for comparison purposes only.

// CLASS-LEADINGTM SAFETY & SECURITY

THERE'S SAFETY IN NUMBERS. AND IN DART'S CASE, IT'S IN NUMBERS LIKE OVER 60 STANDARD AND AVAILABLE SAFETY AND SECURITY FEATURES. AN UNSURPASSEDTM 10 STANDARD AIR BAGSTM A 68 PERCENT HIGH-STRENGTH STEEL CONTENT – ONE OF THE HIGHEST IN THE INDUSTRY – THAT HELPS ABSORB IMPACT ENERGY AND MINIMIZE ACCIDENT DAMAGE. THREE-POINT SEAT BELTS IN ALL FIVE SEATING POSITIONS. WITH NUMBERS LIKE THESE, YOU COULD SAY REASSURANCE IS ENGINEERED INTO EVERY DART.

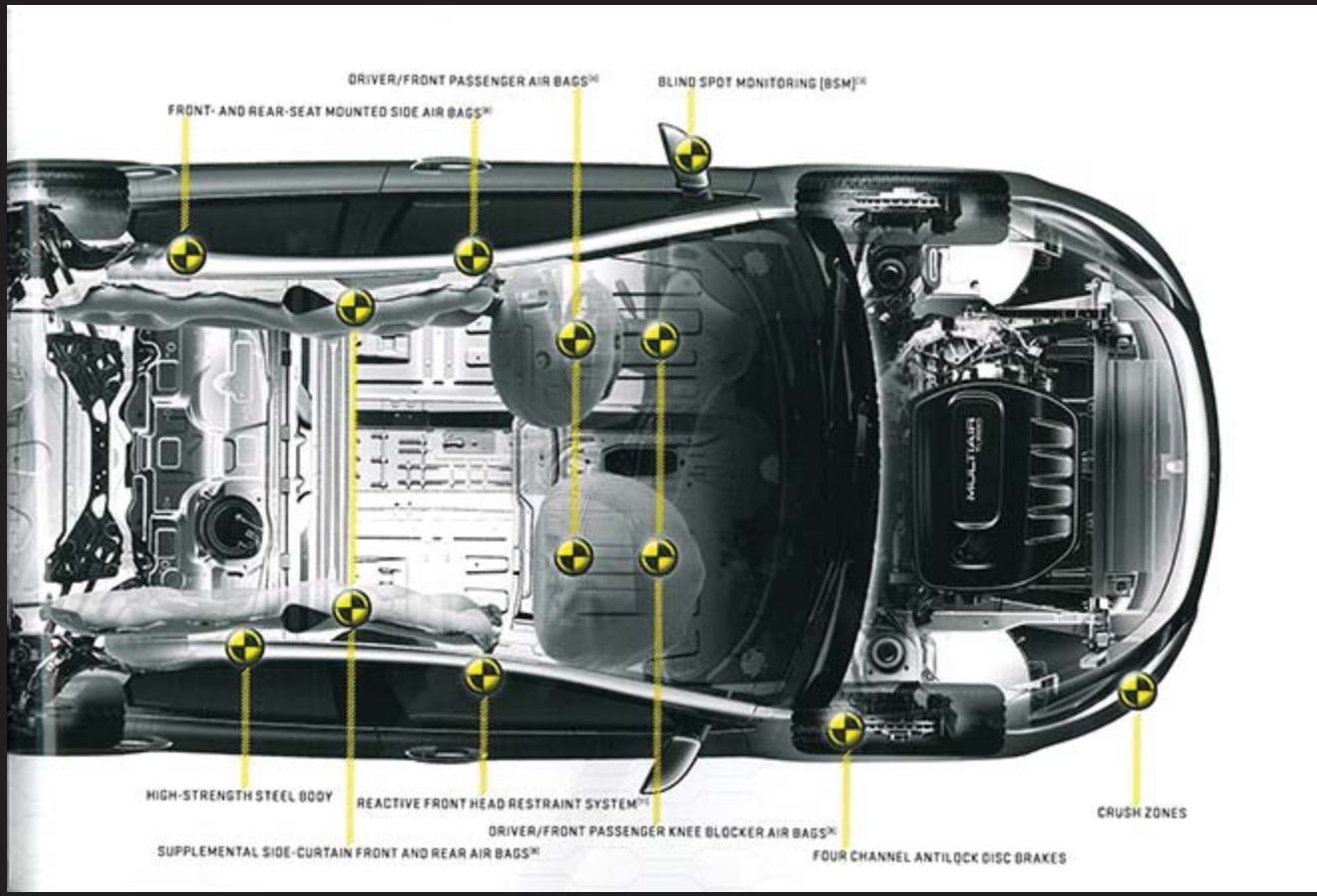
UNSURPASSEDTM 10 AIR BAGSTM DUAL-STAGE, ADAPTIVE-VENTING FRONTAL AIR BAGS, FRONT-SEAT MOUNTED PELVIC AND THORAX SIDE AIR BAGS, REAR-SEAT MOUNTED PELVIC SIDE AIR BAGS, FRONT AND REAR SIDE-CURTAIN AIR BAGS, AND DRIVER AND FRONT-PASSENGER KNEE AIR BAGS ARE ALL STANDARD. **CLASS-EXCLUSIVETM BLIND SPOT MONITORING (BSM)TM AND REAR CROSS-PATH DETECTIONTM** CONTINUALLY MONITOR REAR BLIND ZONES ON EITHER SIDE OF THE VEHICLE VIA RADAR, AND IF A VEHICLE IS SENSED IN THE ZONES, THE DRIVER WILL BE NOTIFIED WITH AN AUDIBLE WARNING AND A YELLOW TRIANGLE SYMBOL IN THE OUTSIDE REARVIEW MIRROR. WHEN IN REVERSE, REAR SENSORS WARN THE DRIVER WITH AN AUDIBLE CHIME IF CROSS-TRAFFIC APPROACHES THE VEHICLE. AVAILABLE. **PARKVIEWTM REAR BACK-UP CAMERATM** PROVIDES A WIDE-ANGLE VIEW ON THE 8.4-INCH TOUCH SCREEN OF THE AREA BEHIND THE VEHICLE. AVAILABLE. **PARKSENSETM REAR PARK ASSISTTM** WHEN IN REVERSE, SENSORS DETECT THE PRESENCE OF OBJECTS IN THE BACKUP PATHWAY AND PROVIDE AN AUDIBLE AND VISUAL WARNING.

AVAILABLE. **ELECTRONIC STABILITY CONTROL (ESC)TM** A VEHICLE-WIDE NETWORK OF SAFETY SENSORS PROVIDES INSTANT AID WHEN IT DETECTS THAT YOU'RE VEERING OFF YOUR INTENDED PATH. THIS ROBUST SYSTEM INCLUDES ELECTRONIC ROLL MITIGATION (ERM), ANTILOCK BRAKE SYSTEM (ABS) WITH BRAKE ASSIST, ALL-SPEED TRACTION CONTROL, AND TRAILER SWAY CONTROL (TSC)TM STANDARD. **READY ALERT BRAKING (RAB)**, THE SYSTEM ANTICIPATES SITUATIONS WHEN THE DRIVER MAY INITIATE AN EMERGENCY BRAKE STOP AND USES THE ESC PUMP TO PRECHARGE THE BRAKE SYSTEM IN ORDER TO DECREASE THE TIME REQUIRED FOR FULL BRAKE APPLICATION. STANDARD. **HILL START ASSIST**, AUTOMATICALLY APPLIES THE BRAKES MOMENTARILY WHEN STOPPED TO HELP PREVENT ROLLBACK ON HILLS OR INCLINES. STANDARD. **RAIN-SENSING WIPERS AND RAIN BRAKE SUPPORT**, WIPERS ACTIVATE WHEN RAIN DROPS ARE DETECTED (AVAILABLE), AND A NEW SMART BRAKE SYSTEM HELPS DRY THE BRAKE ROTORS ON WET ROADS. STANDARD. **FRONT-SEAT REACTIVE HEAD RESTRAINTSTM** IN THE EVENT OF A REAR-END COLLISION, THE RESTRAINTS MOVE FORWARD AND UPWARD TO DECREASE THE SPACE BETWEEN THE HEAD RESTRAINT AND THE OCCUPANT'S HEAD, THEREBY HELPING TO REDUCE THE CHANCE OF INJURY. STANDARD. **SMARTBEAMTM HEADLAMPS**, THE SYSTEM AUTOMATICALLY SWITCHES HEADLAMPS FROM HIGH TO LOW BEAM AND BACK AGAIN WHEN ONCOMING HEADLAMPS OR FORWARD-LIGHTING ELEMENTS ARE SENSED. ADDITIONALLY, THE SYSTEM HELPS MAKE NIGHTTIME DRIVING SAFER BY PROVIDING THE MAXIMUM AMOUNT OF LIGHT POSSIBLE FOR ANY DRIVING SCENARIO. AVAILABLE.

REAR CROSS-PATH DETECTIONTM



PARKSENSETM
REAR PARK
ASSISTTM



PACKAGES

VALUE GROUP (OPTIONAL ON SE):

- Air conditioning with¹micron filter
- Body-color power mirrors
- Speed-sensitive power door locks
- Remote keyless entry

PREMIUM GROUP

(OPTIONAL ON LIMITED, NO CHARGE ON R/T):

- Premium Nappa leather-trimmed seats [Limited only]
- Heated front seats
- Heated steering wheel
- Dual-Zone Automatic Temperature Control [ATC]
- Remote start [automatic transmission only]
- Universal Garage Door Opener

POPULAR EQUIPMENT GROUP (OPTIONAL ON SXT, RALLYE):

- Leather-wrapped steering wheel*
- Speed control*
- Steering wheel-mounted audio controls*
- Front passenger in-seat storage
- Remote start [automatic transmission only]
- Overhead console
- Illuminated visor/vanity mirrors
- Front seatback map pockets
- 12V auxiliary power outlet
- Illuminated front cup holders
- Electronic Vehicle Information Center [EVIC]*
- Trip computer*
- Tire pressure monitoring display
- Automatic headlamps [late availability – requires Uconnect® 8.4 with 8.4-inch touch screen]
- Active grille shutters
- Underbody aerodynamic treatment

*SXT only, standard on Rallye

TECHNOLOGY GROUP (OPTIONAL ON LIMITED, R/T):

- Keyless Enter[™] 'n Go
- Push-button start
- Remote proximity entry
- Blind Spot Monitoring[™] [BSM]
- Rear Cross-Path Detection[™]
- Rain-sensitive windshield wipers
- SmartBeam[™] headlamps
- ParkSense[®] Rear Park Assist[™]
- Intrusion alarm [late availability]

PREMIUM AUDIO GROUP (OPTIONAL ON SXT, RALLYE, AERO):

- Uconnect 8.4 with 8.4-inch touch screen
- ParkView[®] Rear Back-Up Camera[™]
- Floating Island Bezel [FIB]
- Remote USB port
- Remote SD card slot



DART SE

9 EXTERIOR COLOR OPTIONS, 1 INTERIOR OPTION, 1 WHEEL OPTION.



COLORS:

Pitch Black, Blue Streak Pearl, Bright White, Bright Silver Metallic, Maximum Steel Metallic, Tungsten Metallic, Redline 2 Coat Pearl, True Blue Pearl, Winter Chill Pearl

INTERIORS:

A Black interior with Black Denim cloth

WHEELS:

B 16-inch wheel cover (standard)



POWERTRAIN:

2.0L 160hp Tigershark™ 4-Cylinder with 6-speed manual or 6-speed automatic transmission

SELECT STANDARD EQUIPMENT:

- Projector headlamps
- LED stop/turn taillamps
- 16-inch wheel covers
- Laminated acoustic windshield
- 10 air bags[®] and Reactive Front Head Restraints[®]
- Electronic Stability Control[®] (ESC) and 4-wheel disc brakes
- Brake Assist and Hill Start Assist
- Premium soft-touch instrument panel
- Power windows
- AM/FM/CD/MP3 with 4-speakers
- 6-way driver seat with height adjuster
- Premium cluster with tachometer
- Outside temperature display
- Vanity mirrors

SELECT OPTIONAL EQUIPMENT:

- Uconnect[®] Voice Command[™]
- Value Group

DART AERO*

12 EXTERIOR COLOR OPTIONS, 1 INTERIOR OPTION, 2 WHEEL OPTIONS.



COLORS:

Fitch Black, Blue Streak Pearl, Bright White, Bright Silver Metallic, Header Orange, Laguna Blue, Maximum Steel Metallic, Tungsten Metallic, Redline 2 Coat Pearl, True Blue Pearl, Winter Chill Pearl, Citrus Peel Pearl

INTERIORS:

A Black interior with Black Denim cloth

WHEELS:

B 17-inch aluminum wheel [optional]

16-inch wheel cover [standard] not shown

POWERTRAIN:

1.4L 160 hp and 184 lb-ft MultiAir® Intercooled Turbo with 6-speed manual or 6-speed DDC7

SELECT STANDARD EQUIPMENT OVER SE:

- Unique 16-inch Aero wheel covers
- Underbody Aero Kit
- Unique aluminum suspension components
- Active grille shutters
- Ultra low rolling resistance tires
- Tire-inflator kit
- Body-color power mirrors
- Body-color door handles
- Air conditioning with micron filter
- Power door locks
- Remote keyless entry with panic alarm
- Electronic Vehicle Information Center [EVIC]
- Trip computer
- Leather-wrapped steering wheel with audio controls
- Speed control
- Automatic headlamps

SELECT OPTIONAL EQUIPMENT:

- Uconnect® 8.4 with 8.4-inch touch screen
- Garmin, Navigation
- Uconnect Voice Command™
- 7-inch Thin Film Transistor [TFT] display



*Content is based on preliminary information available at the time of printing. Please see dealer for full details.

DART SXT

11 EXTERIOR COLOR OPTIONS, 3 INTERIOR OPTIONS, 1 WHEEL OPTION



COLORS:
Pitch Black, Blue Streak Pearl, Bright White, Bright Silver Metallic, Header Orange, Laguna Blue, Maximum Steel Metallic, Tungsten Metallic, Redline 2 Coat Pearl, True Blue Pearl, Winter Chill Pearl

INTERIORS:
A Black interior with Black Denim cloth
B Black/Light Frost interior with Light Frost Axel cloth
C Diesel/Light Diesel interior with Light Diesel Axel cloth

WHEELS:
D 17-inch aluminum wheel [standard]

POWERTRAIN:
• 2.0L 160 hp Tigershark™ 4-Cylinder with 6-speed manual or 6-speed automatic transmission
• 1.4L 160 hp and 184 lb-ft MultiAir® Intercooled Turbo with 6-speed manual or 6-speed DDCT

SELECT EQUIPMENT OVER SE:
• 17-inch aluminum wheels
• Air conditioning with micron filter
• Power body-color mirrors
• Power door locks and remote keyless entry
• Body-color door handles
• Front sliding armrest
• 60/40 split-folding rear seat with trunk pass-through
• Rear armrest with storage/cup holders
• 6-speakers
• Front and rear floor mats

SELECT OPTIONAL EQUIPMENT:
• Popular Equipment Group
• Power sunroof
• Uconnect® 8.4 with 8.4-inch touch screen with Floating Island Bezel (FIB) and ParkView® Rear Back-Up Camera™
• SiriusXM™ Satellite Radio®
• Garmin® Navigation
• 9 Alpine® speakers with subwoofer, surround sound and 505 watts
• Uconnect® Voice Command™
• Racetrack LED taillamps



DART RALLYE

12 EXTERIOR COLOR OPTIONS, 4 INTERIOR OPTIONS, 2 WHEEL OPTIONS.



WHEELS:

- A 17-inch aluminum wheel (standard)
- B 17-inch Hyper Black aluminum wheel (optional)

INTERIORS:

- C Black interior with Black Static cloth, Light Diesel stripes/accents
- D Black interior with Black Static Cloth, Ruby Red stripes/accents
- E Diesel interior with Diesel Static cloth with Citrus Peel stripes/accents
- F Diesel interior with Diesel Static cloth with Light Diesel stripes/accents



POWERTRAIN:

- 2.0L 160 hp Tigershark™ 4-Cylinder with 6-speed manual or 6-speed automatic transmission
- 1.4L 160 hp and 194 lb-ft MultiAir® Intercooled Turbo with 6-speed manual or 6-speed DDCT

SELECT STANDARD EQUIPMENT OVER SXT:

- Unique Black front fascia accents
- Black headlamp bezels
- Projector fog lamps
- Integrated dual exhaust with bright tips
- Leather-wrapped steering wheel
- Leather-wrapped shifter (with automatic)
- Steering wheel audio controls
- Speed control
- Trip computer
- Electronic Vehicle Information Center [EVIC]

SELECT OPTIONAL EQUIPMENT:

- Popular Equipment Group
- Power sunroof
- Uconnect® 8.4 with 8.4-inch touch screen with Floating Island Bezel [FIB]
- ParkView® Rear Back-Up Camera™
- SiriusXM™ Satellite Radio™
- Garmin® Navigation
- 9 Alpine® speakers with subwoofer, surround sound, and 505 watts
- Uconnect Voice Command™
- Racetrack LED taillamps

COLORS:

Citrus Peel Pearl, Winter Chill Pearl, True Blue Pearl, Redline 2 Coat Pearl, Tungsten Metallic, Maximum Steel Metallic, Laguna Blue, Header Orange, Bright Silver Metallic, Bright White, Blue Streak Pearl, Pitch Black



DART LIMITED

12 EXTERIOR COLOR OPTIONS, 6 INTERIOR OPTIONS, 2 WHEEL OPTIONS.



WHEELS:

- A** 17-inch aluminum wheel [standard]
- B** 17-inch polished aluminum wheel [optional]

INTERIORS:

- C** Black interior with Black Axel cloth, Light Diesel accent stitching
- D** Black interior with Light Frost Axel cloth and accent stitching
- E** Black interior with Black Nappa leather, Light Diesel accent stitching
- F** Black interior with Light Frost Nappa leather and accent stitching
- G** Diesel interior with Pearl White Nappa leather, Citrus Peel accent stitching



POWERTRAIN:

- 2.0L 160 hp Tigershark™ 4-Cylinder with 6-speed manual or 6-speed automatic transmission
- 1.4L 160 hp and 184 lb-ft MultiAir® Intercooled Turbo with 6-speed manual or 6-speed DCT

SELECT STANDARD EQUIPMENT OVER SXT:

- Bright grille and door handles
- Projector fog lamps
- Automatic headlamps
- Power heated mirrors with supplemental signals
- Uconnect® 8.4 with 8.4-inch touch screen and ParkView® Rear Back-Up Camera™
- Floating Island Bezel (FIB)
- 7-inch Thin Film Transistor (TFT) display
- Power 10-way driver seat
- Premium door trim panel and accent stitching
- Leather-wrapped steering wheel, speed and audio controls
- Front passenger in-seat storage and overhead console
- Uconnect Voice Command™
- Speed-sensitive power locks, express up/down front windows
- Ambient LED interior lighting and illuminated vanity mirrors
- Active grille shutters and underbody aerodynamic treatment

SELECT OPTIONAL EQUIPMENT:

- High Intensity Discharge (HID) Xenon headlamps
- Power sunroof
- Garmin® Navigation with SiriusXM Travel Link™
- SiriusXM™ Satellite Radio®
- 9 Alpine® speakers with subwoofer, surround sound, and 506 watts
- Technology Group
- Racetrack LED taillamps

COLORS:

Citrus Peel Pearl, Winter Chill Pearl, True Blue Pearl, Redline 2 Coat Pearl, Tungsten Metallic, Maximum Steel Metallic, Laguna Blue, Header Orange, Bright Silver Metallic, Bright White, Blue Streak Pearl, Pitch Black



DART R/T

12 EXTERIOR COLOR OPTIONS, 2 INTERIOR OPTIONS, 2 WHEEL OPTIONS.



COLORS:
Pitch Black, Blue Streak Pearl, Bright White, Bright Silver Metallic, Header Orange, Laguna Blue, Maximum Steel Metallic, Tungsten Metallic, Redline 2 Coat Pearl, True Blue Pearl, Winter Chill Pearl, Citrus Peel Pearl

INTERIORS:

- A** Black interior with Black/Ruby Red Nappa leather, Ruby Red accents
- B** Black interior with Black Nappa leather, Ruby Red crust

WHEELS:

- C** 18-inch aluminum wheel [standard]
- D** 18-inch Hyper Black aluminum wheel [optional]



POWERTRAIN:

2.4L 184 hp Tigershark™ 4-Cylinder with MultiAir™ II with 6-speed manual or 6-speed automatic transmission

SELECT STANDARD EQUIPMENT OVER LIMITED:

- Unique Black front fascia accents with Hyper Black grille
- Black headlamp bezels
- Integrated dual exhaust with bright tips
- RaceTrack taillamps with 152 LEDs
- 18-inch aluminum wheels
- Sport suspension with frequency-sensing damping shocks
- Body-color door handles
- Unique perforated Nappa leather-trimmed seating
- Heated front seats and heated steering wheel
- Dual-Zone Automatic Temperature Control
- Remote start [automatic transmission]
- Universal Garage Door Opener

SELECT OPTIONAL EQUIPMENT:

- High Intensity Discharge (HID) Xenon headlamps
- Power sunroof
- Garmin Navigation with SiriusXM Travel Link™
- SiriusXM™ Satellite Radio™
- 9 Alpine® speakers with subwoofer, surround sound, and 505 watts
- Technology Group



MOPAR CUSTOMIZED

DOODGE DART GTS TRIBUTE*



DOODGE DART GTS TRIBUTE* starts with a Dart R/T and then mixes some of the sportiest and most unique offerings from Mopar. Dart GTS Tribute separates itself from its siblings with these factory-installed Mopar Parts and Accessories.

EXTERIOR:

- 18-Inch Forged Chrome R/T Wheel
- Black Aluminum Hood with Appearance Intake
- Matte Black Front Chin Spoiler
- Matte Black Side Sills
- Matte Black Rear Air Diffuser
- Matte Black Rear Spoiler
- Carbon Fiber-Style Roof Graphic

INTERIOR:

- Ceramic White Floating Island Bezel (FIB) with Gloss Black Cluster Trim and Ruby Red LED
- Pearl White Door Inserts with Gloss Black Handle Base
- White and Black Steering Wheel with Gloss Black Steering Wheel Bezel
- Pearl White 360 Handle Finisher
- Pearl White HVAC Bezels
- Pearl White Chin Bezel
- Pearl White Shifter Bezel
- Pearl White Cup Holder Bezel
- Black Door Armrest with Pearl White Accent Stitching
- Bright Pedal Covers
- Katzkin® Leather Seats
- Premium Carpet Floor Mats
- Black Center Console with Pearl White Stitching
- Black Alcantara® Wrapped Cluster Bow with Pearl White Accent Stitching

*Available 2013 calendar year. Parts and accessories are subject to change. Please see dealer for the latest package information.





ALL-NEW 2013 DODGE DART



