

INVER GROVE TOYOTA

Recommendations for

Replacing Tires

Inver Grove Toyota is equipped to handle all your vehicle needs, and that includes tire service. Our professionals are knowledgeable and know what's best for your vehicle.

We sell major brand names, and most of our tires come with a **FREE** two-year Road Hazard Coverage. We've got you covered bumper to bumper.

100% First Year
50% Second Year
\$20 Flat Repair

Be Tire Smart,
Play Your P.A.R.T!



Tire Care Tips
from the RMA
(Rubbers
Manufactures
Association)

P - PRESSURE

Check your tire pressure once a month to improve wear and have safe predictable handling.

A - ALIGNMENT

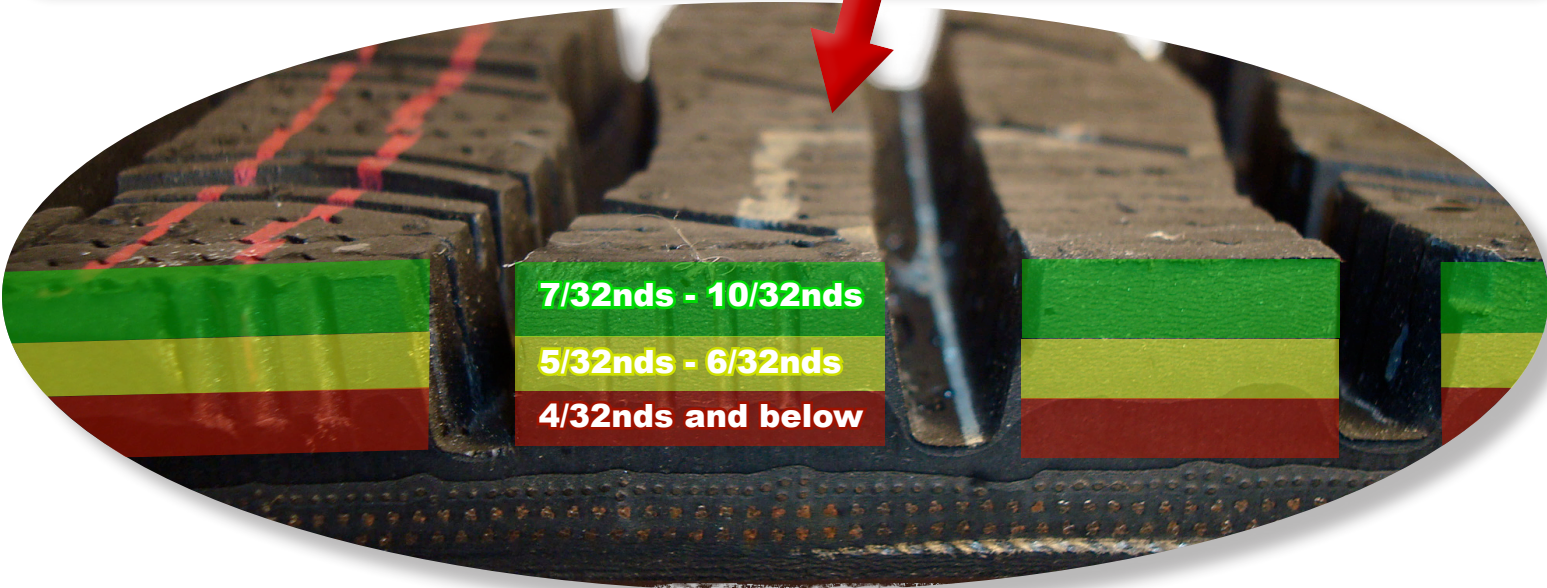
Keep your vehicle suspension in good working order. Abnormal wear caused by misalignment is not warrantable.

R - ROTATION

Regularly rotate your tires as recommended by Toyota scheduled maintenance intervals.

T - TREAD

Visually check your tires for uneven wear and signs of damage. Avoid potholes, curbs, spinning, and hard cornering



Tread Depth (in 32/nds of an inch) and Remaining Percentage*

10	100%
9	83%
8	66%
7	50%
6	32%
5	15%
4	Replace

*Based on Original Tread Depth of 10/32nds

At these tread depths, the tires will have safe, usable tread life. Inver Grove Toyota will monitor your tires each service visit to make sure of even and proper wear

This is the cautionary period, and replacement is recommended during bad weather or taking long distance trips. Consult with your Service Advisor on the best options

For optimum safety and performance, Inver Grove Toyota recommends to replace tires at 4/32nds immediately

Inver Grove Toyota offers major brand names that are specifically designed to match your vehicle's performance and suspension, giving you that new vehicle ride the first day you bought the car!

Don't forget to ask about the **FREE** two-year Road Hazard Coverage offered on most replacement tires.



Continental

UNIROYAL

GENERAL TIRE

DUNLOP
TIRES

MICHELIN
Because so much is riding on your tires.

BFGoodrich