



TUNDRA

2012



WHEN IT COMES TO WORK, **THIS TRUCK MEANS BUSINESS.**

Five years ago, when we set out to rebuild the 1/2-ton truck from the ground up, we weren't fooling around. The 2012 Toyota Tundra is the latest example of what can be accomplished when you have an uncompromising work ethic. What do we mean by uncompromising? First we conducted extensive research into what truck qualities are truly important to those who depend on their truck for a living. Then we brought our engineering expertise to bear on those qualities. The result is what J.D. Power and Associates has called the "Most Dependable Large Pickup" six years in a row.¹

Remarkable acclaim, indeed. But then, Tundra earned it with a load of innovative features, like an available 5.7L i-FORCE V8 that cranks out the power to tow up to 10,400 lb.² It's also equipped with a stout 10.5-in. ring gear to help handle those five tons. Not to mention massive 4-piston brake calipers to help bring it all to a stop without breaking a sweat. But Tundra doesn't just work harder, it works smarter. Dual Independent Variable Valve Timing with intelligence (VVT-i) makes this truck as efficient as it is powerful.

Why do we keep going to these extremes? Because when you've got a 1/2-ton truck carrying a reputation this size, you don't take it lightly.

¹The Toyota Tundra received the lowest number of problems per 100 vehicles among large pickups in the proprietary J.D. Power and Associates 2006-2011 Vehicle Dependability StudiesSM 2011 study based on 43,779 consumer responses measuring problems consumers experienced in the past 12 months with three-year-old vehicles (2008 model year cars and trucks). Proprietary study results are based on experiences and perceptions of consumers surveyed October-December 2010. Your experiences may vary. Visit jdpower.com ²See footnote 26 in Disclaimers section.



4x4 CrewMax Tundra Grade shown in Magnetic Gray Metallic with available 5.7L V8, 18-in. 5-spoke alloy wheels, Deck Rail System and front and rear parking assist sonar.



POWER



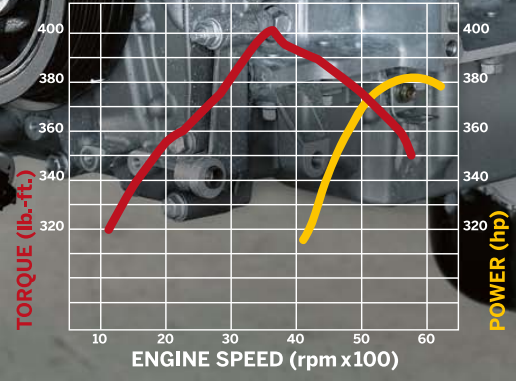
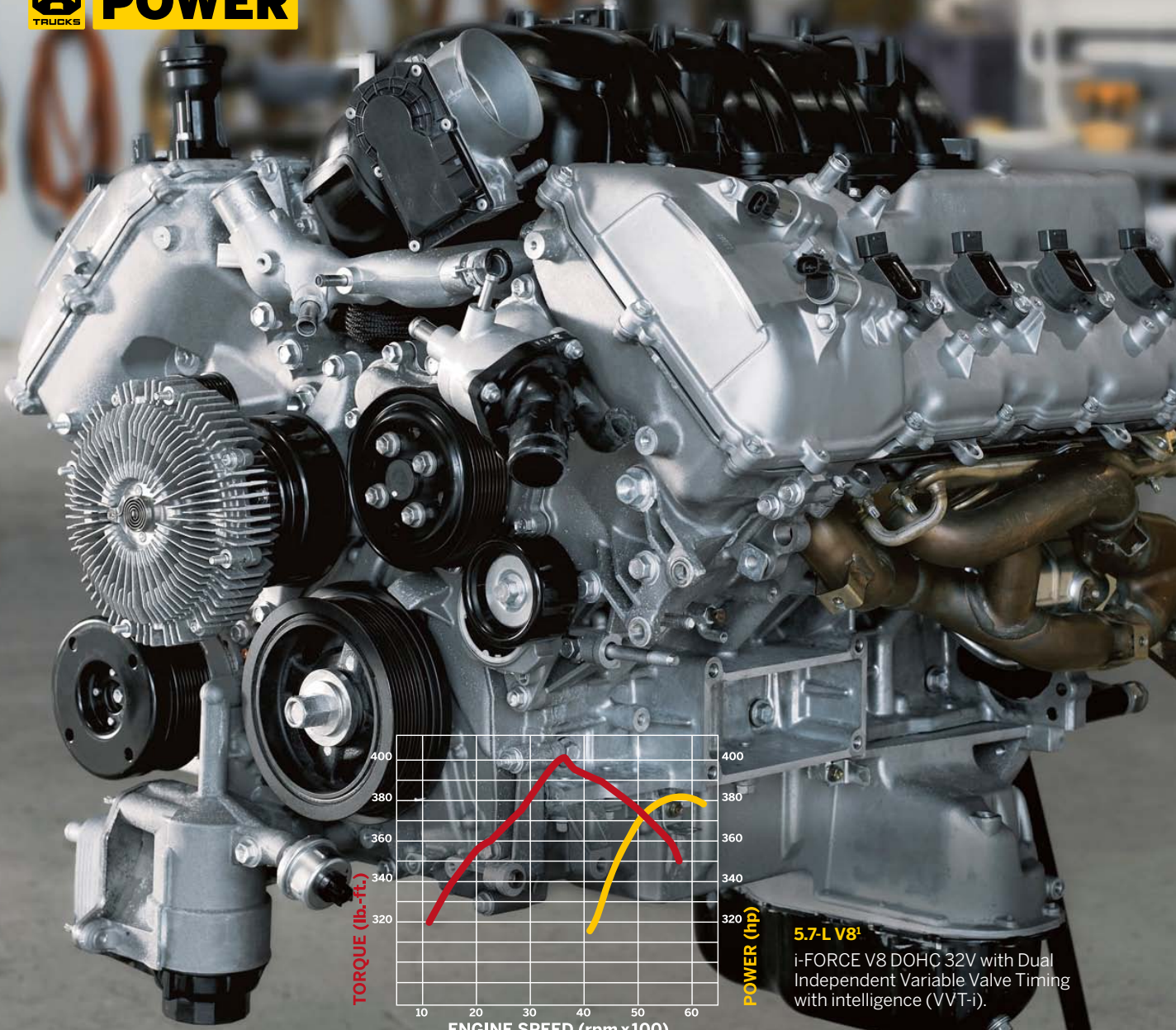
4x4 CrewMax Tundra Grade shown in Silver Sky Metallic with available 5.7L V8 and 18-in. 5-spoke alloy wheels.

POWER. IT MAKES BOTH YOUR TRUCK AND YOUR WORK GO FASTER.

When it comes to hard work, there's just no substitute for power. Then again, pickup owners don't all demand the same thing from their trucks. Which is why Tundra offers a choice of engines, including a brawny 5.7L V8, a strong 4.6L V8 and a very capable 4.0L V6. So whether you're hauling, towing or just heading home, you can rest assured that with Tundra, you're carrying a payload of capability.



POWER



5.7-L V8¹
i-FORCE V8 DOHC 32V with Dual Independent Variable Valve Timing with intelligence (VVT-i).



An available 5.7L V8 E85 Flex Fuel² engine makes Tundra an alternative-fuel vehicle.

4 INTO 2 INTO 1 TUBULAR EXHAUST MANIFOLD

The available 5.7L i-FORCE V8 features an exhaust system with a pair of 4 into 2 into 1 tubular header-style manifolds. This design helps the exhaust flow more freely, reducing back pressure and enhancing mid-range torque. Forged from stainless steel, the headers are also lighter and more corrosion-resistant than cast-iron manifolds.

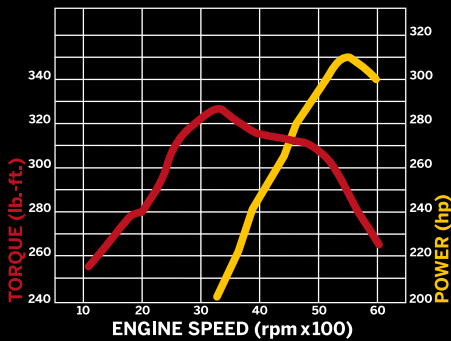


¹Chart shown for Double Cab Long Bed.
²See footnote 24 in Disclaimers section.

i-FORCE. TO BE RECKONED WITH.

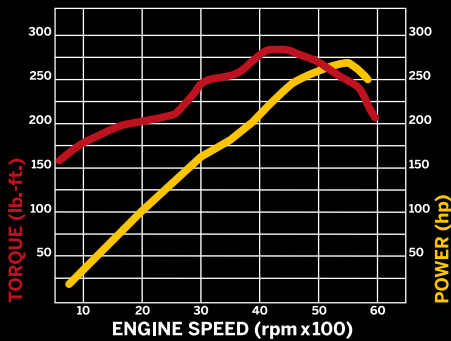
Tundra's available 5.7L V8 has the muscle to cut big jobs down to size, delivering 381 hp and 401 lb.-ft. of torque. This i-FORCE engine employs the strength of Dual Independent VVT-i technology, an advanced valve timing system that maximizes engine power and efficiency across a wide range of operating conditions. Performance is also aided by our Acoustic Control Induction System (ACIS), which varies the length of the intake runners to help optimize power and efficiency. What's more, Tundra's 4.6L V8 utilizes Dual Independent VVT-i and ACIS technology to produce an impressive 310 hp and 327 lb.-ft. of torque.

You'll get plenty of the torque you expect from a truck engine with Tundra's 4.0L V6 too. In fact, excellent torque across a wide range of rpm is a defining feature of all our truck engines. So whether you're accelerating from a stop with a trailer in tow or entering the on-ramp getting up to freeway speed, you'll always be in a position of power.



4.6L V8

Our efficient 4.6L i-FORCE V8 may be compact, but cranking out 310 hp and 327 lb.-ft. of torque, it achieves an impressive power per liter ratio.



4.0L V6

Tundra's all-aluminum 4.0L V6 engine is a cutting-edge engine with an old-fashioned work ethic. With 24 valves actuated by Double Overhead Cams (DOHC) and controlled by Dual Independent Variable Valve Timing with intelligence (VVT-i), it produces a peak power output of 270 hp at 5600 rpm and 278 lb.-ft. of torque at just 4400 rpm.

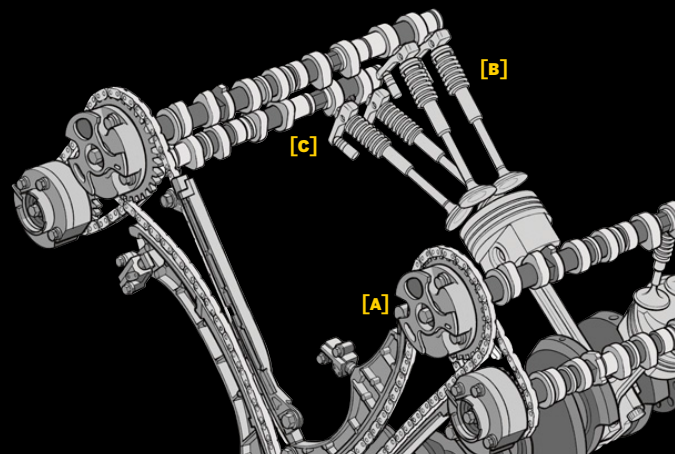


DUAL INDEPENDENT VVT-i

On the available 5.7L i-FORCE V8, Dual Independent VVT-i [A] can even adjust timing for the intake [B] and the exhaust valves [C] independently, with remarkable results: More than 90% of the 5.7L V8's peak torque of 401 lb.-ft. is on tap from just 2400 rpm all the way to 5500 rpm.

THE EFFICIENCY OF DUAL INDEPENDENT VVT-i

To optimize the engine's volumetric efficiency, VVT-i knows precisely how long to leave the valves open so that the engine pumps as much air as possible. It's one reason the power band is so wide.





TOWING



TOW/HAUL MODE

Engineered to help improve towing performance, the available Tow Package provides a TOW/HAUL mode on Tundra models with a 6-speed automatic transmission. When engaged, TOW/HAUL expands the use of lower gear ranges, helping prevent the transmission from awkwardly shifting or “hunting” for the right gear. Particularly useful on mountain roads or while towing or hauling a heavy load, the system enhances acceleration, downhill engine braking, pulling power and cruising comfort.



4x2 Double Cab Tundra Grade Standard Bed shown in Spruce Mica with available 5.7L V8, Tow Package and Convenience Package.

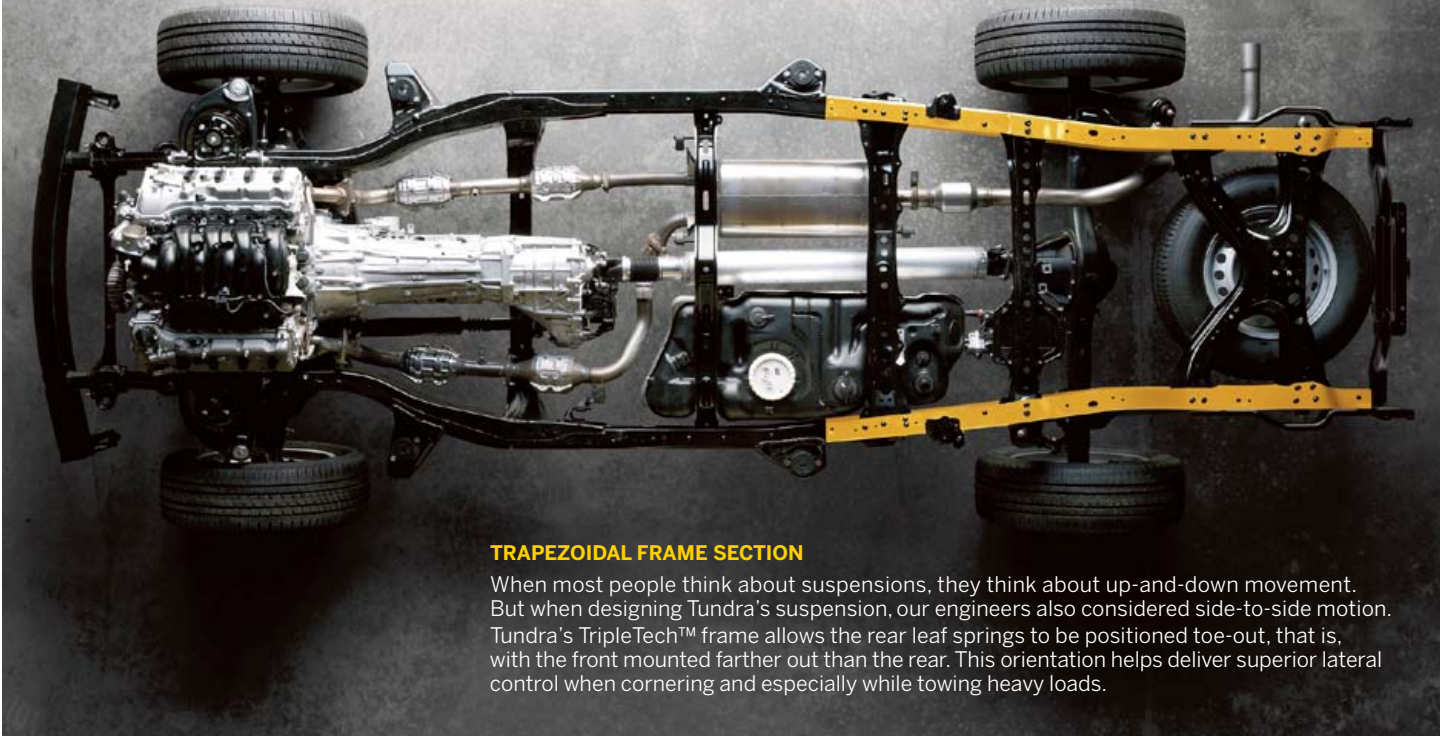
TOWS 10,000 LB.¹ BETTER YET, STOPS 10,000 LB.

Yep, five Tundra models can tow over five tons. In fact, the 4x2 Regular Cab Long Bed with an available 5.7L V8 has a towing capacity up to 10,400 lb. Yet those who think towing is only about brute power are unfamiliar with a fundamental principle of physics. For our purposes, it can be summarized as, “A trailer in motion tends to stay in motion.” That is, unless your truck is a Tundra. No other truck in its class has larger front brake rotors. Coupled with powerful 4-piston calipers, those rotors bring Tundra and its trailer confidently to a halt. In short, when it comes to towing, don’t sweat the big stuff.

¹See footnote 26 in Disclaimers section.



TOWING



TRAPEZOIDAL FRAME SECTION

When most people think about suspensions, they think about up-and-down movement. But when designing Tundra's suspension, our engineers also considered side-to-side motion. Tundra's TripleTech™ frame allows the rear leaf springs to be positioned toe-out, that is, with the front mounted farther out than the rear. This orientation helps deliver superior lateral control when cornering and especially while towing heavy loads.

THE BACKBONE OF OUR 1/2-TON TRUCK.

A towing capacity up to 10,400 lb¹ is bound to put a lot of strain on a 1/2-ton pickup. And while other manufacturers might use a single type of material or design for their frame, Tundra uses a specifically engineered structure for each of the frame's three sections. It's a design called TripleTech™, and it's one strong reason why Tundra is the ideal work vehicle.



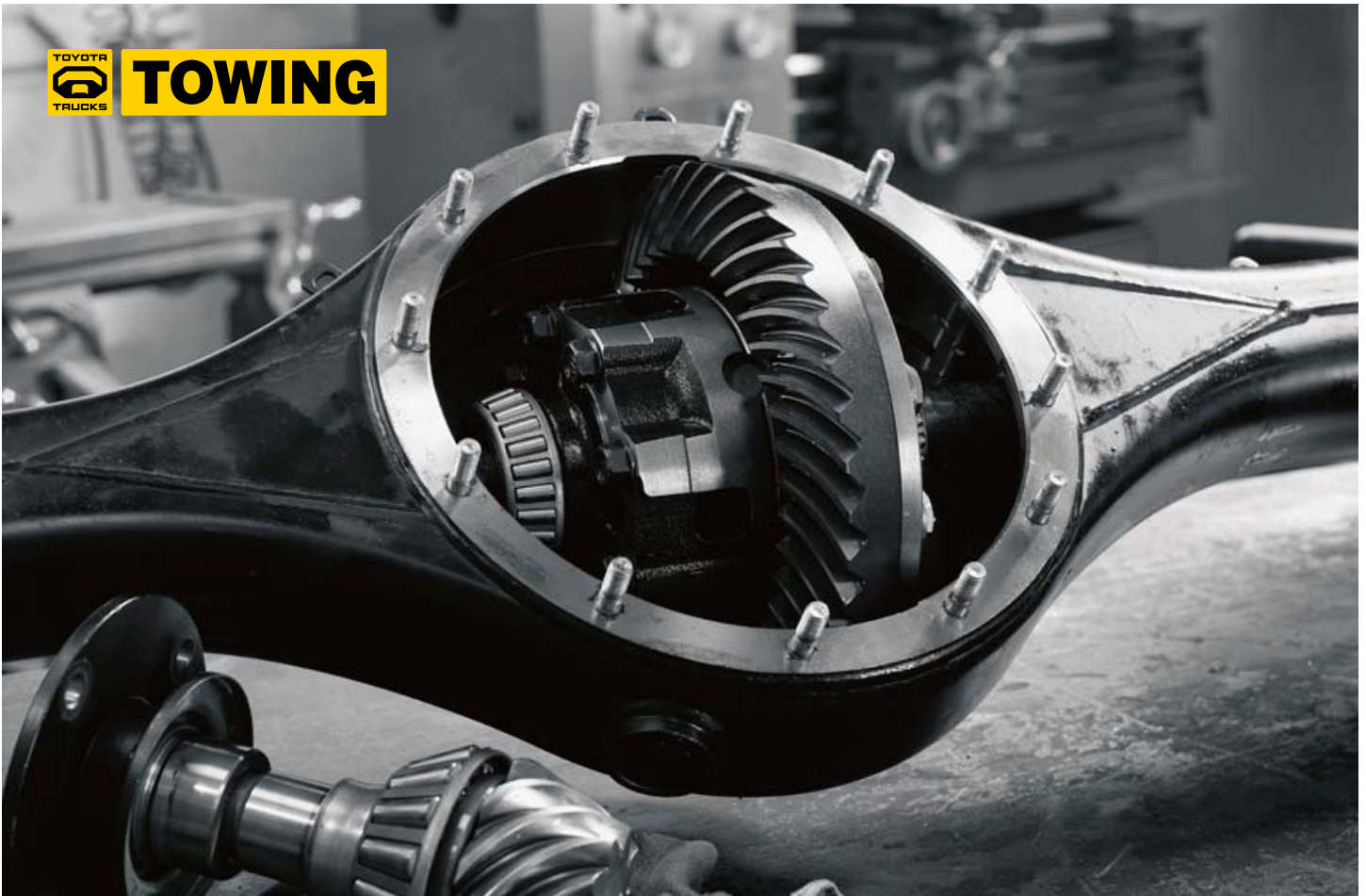
INTEGRATED TOWING RECEIVER HITCH

i-FORCE V8 Tundra models with the available Tow Package come with the receiver hitch integrated into the frame. Attached far down the frame rails and using a dozen high-strength bolts, the hitch features a hydroformed cross member for increased towing strength.

¹See footnote 26 in Disclaimers section.



TOWING



6-SPEED AUTOMATICS

Tundra's available 6-speed automatic transmissions offer a wide gear range for responsive acceleration at low- and mid-range rpm. First gear's extremely low ratio is ideal for serious towing. And there's no need to choose from a variety of rear axles: Tundra's available 4.300 rear axle ratio¹ works seamlessly with the transmission gear range to optimize performance.

TRANSMISSION COOLING SYSTEM

Our available 5.7L V8 6-speed automatic transmission powertrain comes with an Automatic Transmission Fluid (ATF) Warmer, improving performance on cold start-ups. And when the towing gets tough, the available Tow Package helps cut heat buildup with supplemental coolers for the transmission fluid, the engine oil and the power steering fluid.

DRIVE SHAFT

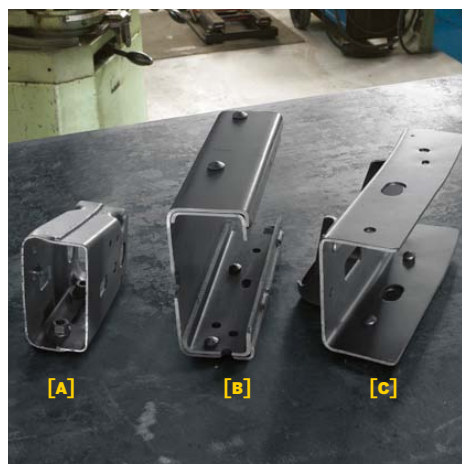
Regular Cab Long Bed, Double Cab and CrewMax models use a 2-piece drive shaft. The front section is steel, while the rear section is aluminum. Using aluminum reduces rotational mass for enhanced acceleration and drops Tundra's unsprung weight, cutting down on vibration, noise and harshness.

¹4,100 rear end on 4.6L V8 models.

MASSIVE RING GEAR

If there's a weak link on most pickup trucks, it's usually the ring gear in the rear differential. It's where push comes to shove under the stresses of heavy loads. To handle the massive torque of Tundra's available 5.7L V8, our engineers matched it with a massive 10.5-in. ring gear.

Tundra differentials also benefit from a ring-and-pinion gear-cut process called face hob gear-cutting, which results in a stronger gear tooth that's able to handle increased torque.



TRIPLETECH™ FRAME

The name TripleTech™ refers to the different types of engineering employed on each of Tundra's three frame sections. Up front the frame is fully boxed [A] for rigid support of the engine. Under the cab a reinforced C design [B] provides a blend of rigidity and flexibility. Under the bed an open C design [C] is used, offering a measure of flex to help handle big payloads. The TripleTech™ design maximizes payload and reduces excess weight without sacrificing durability.



PAYLOAD



4x2 Regular Cab Tundra Grade Standard Bed shown in Super White with available 4.6L V8, Work Truck Package, WEATHER GUARD® lumber rack and toolbox.

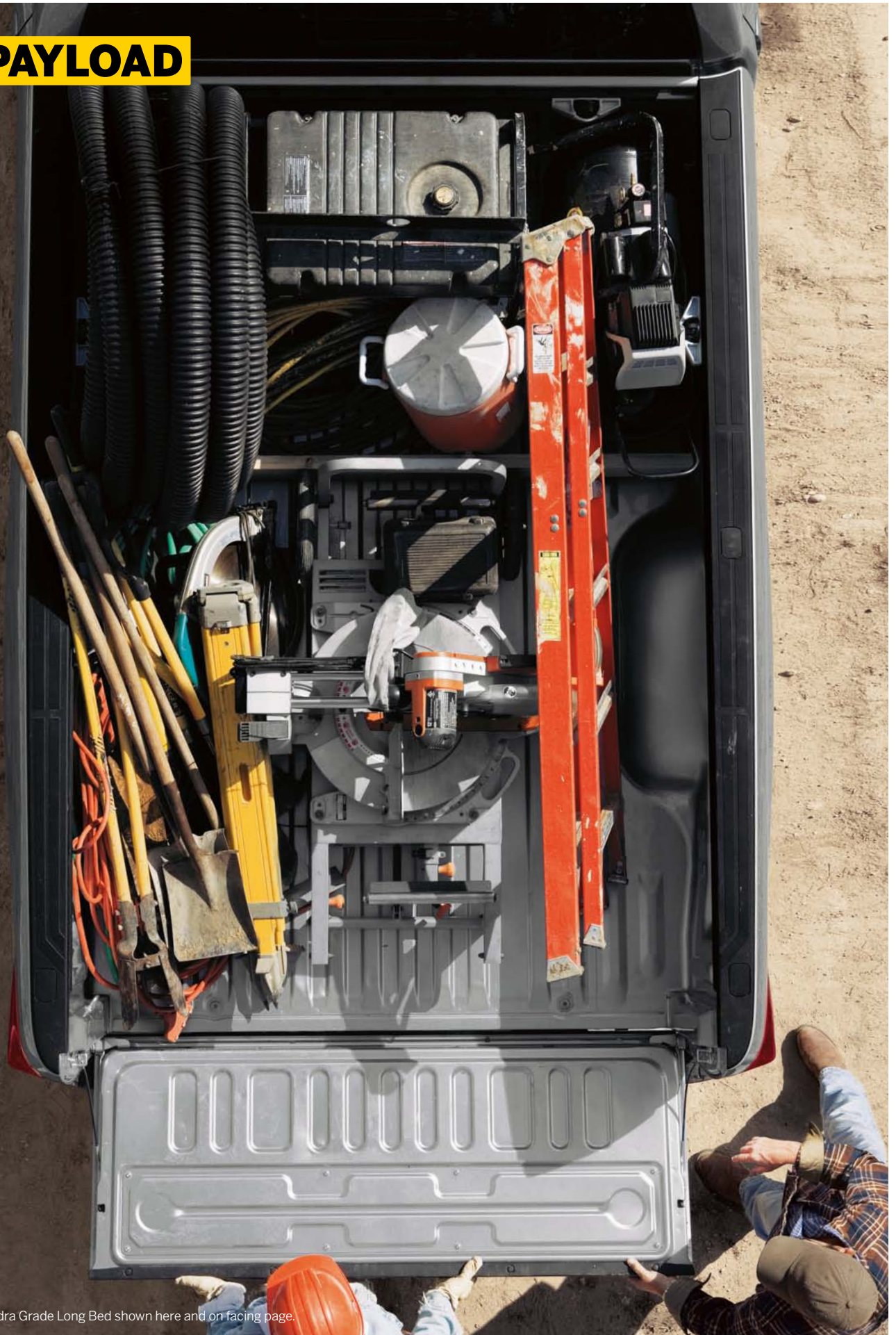
THINK YOU GOT A HEAVY LOAD? **BRING IT.**

Any truck can carry around a big bed on the back. But Tundra's bed also offers a payload of equipment to help you secure and access your cargo. Equipment like an available Deck Rail System¹, cleats and tie-downs, lumber slots and an easy lower and lift tailgate. Of course, it doesn't hurt that the bed is 22.2 in. deep — deep enough for a 5-gallon paint bucket to fit under the rails — and 66.4 in. wide — wide enough for a sheet of plywood to fit between the wheelwells. So the next time the boys at the lumberyard are loading up your Tundra, ask them: "Is that all you got?"

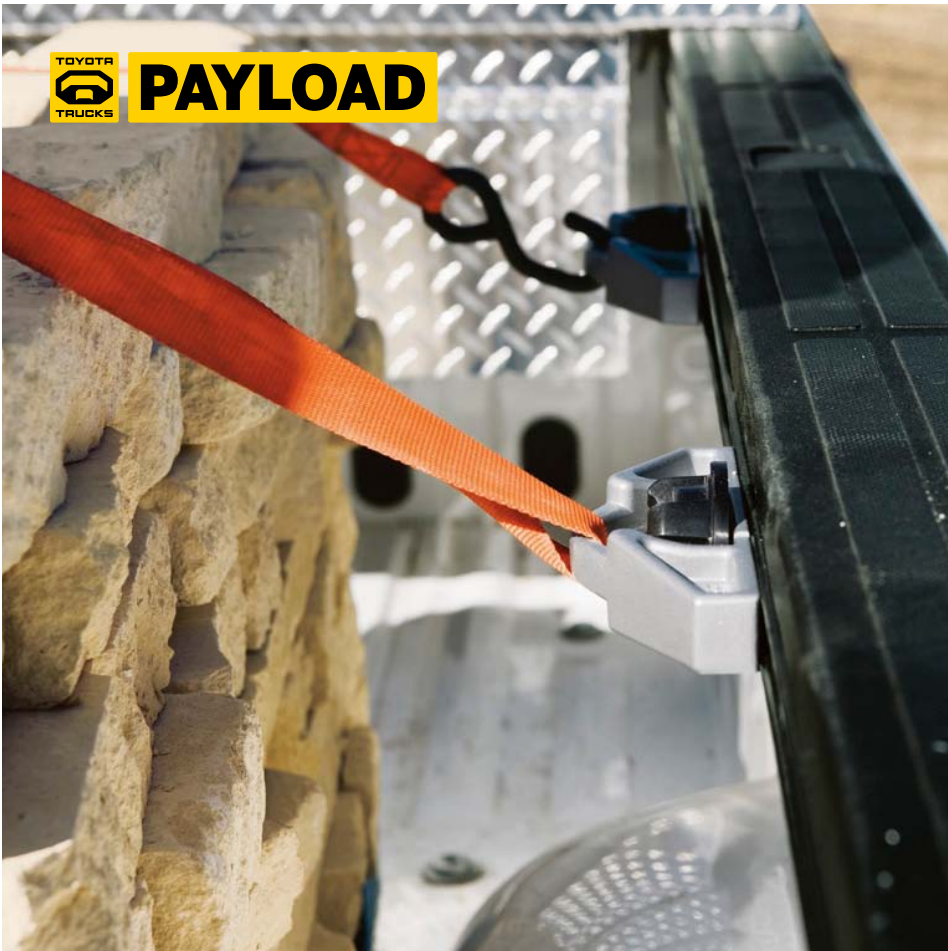
¹Standard on Limited Grade, available on all other models.



PAYLOAD



Double Cab Tundra Grade Long Bed shown here and on facing page.



PAYLOAD

DECK RAIL SYSTEM¹

Tundra's available Deck Rail System with four adjustable tie-down cleats is flexible enough to secure a wide variety of loads in Tundra's deep cargo bed.

CLEATS AND TIE-DOWNS

Connected to the upper rail of the bed, Tundra's tie-down system uses four cleats, each rated at 220 lb., to help ensure that what's in the bed stays in the bed.

2x6 SLOTS

Partitioning Tundra's truck bed is easy: Simply take some 2x6 lumber, cut two bed-width lengths and slide them into the slots stamped into the sidewalls. Bingo: You've got three separate cargo sections.

2x4 SLOTS

Creating a 2-tier bed is easy too, thanks to sidewall notches for 2x4 supports.

PROTECTION

To help protect the finish of Tundra's cargo box, we've applied a durable galvanized zinc undercoating to help guard against scratches, dings and dents, which might otherwise result in corrosion.

EASY LOWER AND LIFT TAILGATE

Tundra's tailgate easily opens and closes with just two fingers. A gas-charged strut dampens the tailgate and helps make sure it won't slam if you drop it.

REMOVABLE AND LOCKABLE GATE

Need to load heavy cargo into the bed? Tundra's tailgate is easy to remove so you can bring ramps up to the end of the bed. Plus, the gate is lockable to help secure cargo concealed under a shell.

¹Standard on Limited Grade, available on all other models.





CONTROL



4x2 Double Cab Tundra Grade Standard Bed shown in Barcelona Red Metallic with available 5.7L V8, TRD Off-Road Package and SiriusXM Satellite Radio¹ capability. See footnote 26 in Disclaimers section for more information on towing. ¹See footnote 1 in Disclaimers section.

DON'T LET ANYONE QUESTION **YOUR STABILITY.**

Driver control is crucial to towing and Tundra has you covered. It features a technology called Trailer-Sway Control (TSC)¹, which helps counteract vehicle yaw caused by trailer oscillation, helping keep you in command of your rig at all times. And when it comes to grip, again, Tundra delivers. It comes standard with Automatic Limited-Slip Differential (Auto LSD). If one of the drive wheels starts to slip, Auto LSD will automatically brake the spinning wheel, sending available power to the wheel with traction.

STANDARD ON ALL MODELS: CONTROL.

TRAILER-SWAY CONTROL (TSC)

When a vehicle is towing a trailer, conditions such as side winds, load undulation or the driver's steering input can result in dangerous trailer sway. Tundra's TSC is a system that detects trailer sway and applies brake pressure at individual wheels and controls engine torque to help stabilize the trailer. The system also illuminates the stop lamps so that vehicles behind are alerted to the fact that your vehicle is decelerating.

AUTOMATIC LIMITED-SLIP DIFFERENTIAL (Auto LSD)

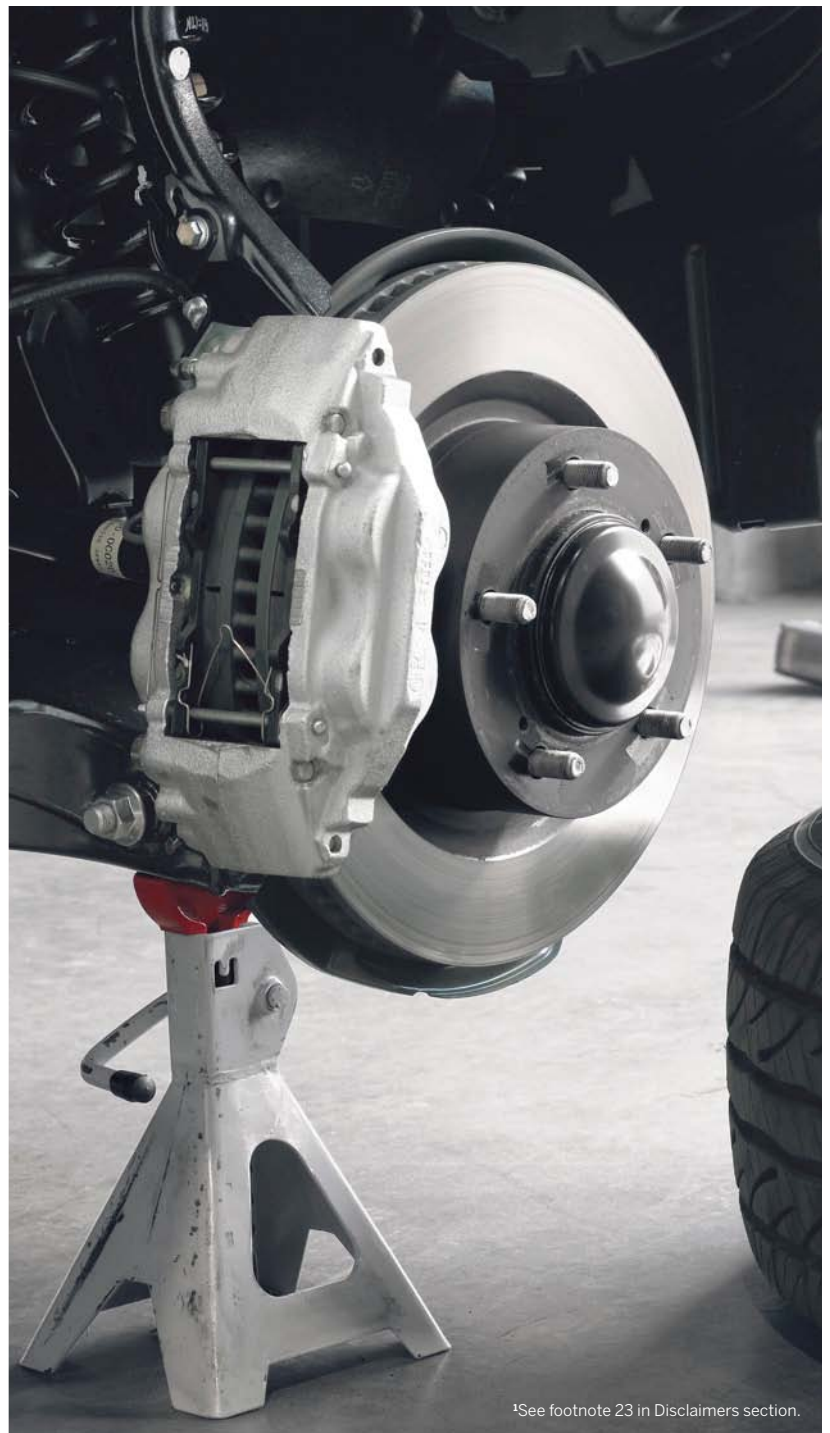
Auto LSD uses the brakes to simulate the action of a mechanical limited-slip differential. Typically, engine torque is distributed to the rear wheels through an open differential, which sends power down the path of least resistance. That may work for turns where the outside wheel has to spin faster than the inside wheel, but not if a wheel loses traction. In that case, the differential will send all of its torque to the spinning wheel. With Auto LSD, Tundra applies brakes individually to wheels with no traction. This increases resistance at the slipping wheel, feeding power to the wheels with grip. With Auto LSD, even a 4x2 Tundra can pull itself out of many low-traction situations.

4WD ACTIVE TRACTION CONTROL (A-TRAC)

Pulling a trailer on a rainy day? Tundra models equipped with 4WD offer an A-TRAC system that helps improve grip in low-traction conditions — whether it be on-road, off-road or on a split-traction surface. Activated by a switch on the dash, the A-TRAC system utilizes the 2-speed transfer case for incredible torque, and works in conjunction with Auto LSD to help prevent wheelspin.

CLASS-LEADING BRAKES

A big part of controlling a trailer is having the ability to stop it. To that end, Tundra not only has the largest front brake rotors in its class, but is also the only 1/2-ton truck to offer 4-piston brake calipers.



¹See footnote 23 in Disclaimers section.



SAFETY



Photo not intended to replicate actual inflated airbags.

THERE'S ONLY ONE WAY TO WORK: **SAFETY FIRST.**

You don't take chances on the job site, and you don't have to take chances on the way there either. In four crash tests conducted by the Insurance Institute for Highway Safety (IIHS) — front, side, rear and roof strength — Tundra Double Cab earned the top rating¹. In fact, Tundra was the first full-size pickup truck ever named a Top Safety Pick by the IIHS¹. And no wonder: Tundra comes equipped with driver and front outboard passenger airbags, side curtain and front seat-mounted side airbags,² and driver and front outboard passenger knee airbags — all standard. Now that's what we call a work ethic.

¹Insurance Institute for Highway Safety rating for 2012 Tundra, vehicle class Large Pickups. Ratings are only meaningful when comparing vehicles in the same weight class, 2011 model year tested. ²See footnote 21 in Disclaimers section.



SAFETY



Toyota's Star Safety System™ is a suite of six safety features offered standard on every new Toyota. The system includes Vehicle Stability Control (VSC)¹, Traction Control (TRAC), Anti-lock Brake System (ABS), Electronic Brake-force Distribution (EBD), Brake Assist (BA)² and Smart Stop Technology (SST)³. Termed "active" safety features, they're designed to operate in certain situations to help prevent accidents from occurring in the first place.



VEHICLE STABILITY CONTROL (VSC)¹

VSC helps prevent two factors that can cause drivers to lose control during cornering: front wheelslip and rear wheelslip. VSC monitors your steering angle and compares it to the direction in which your vehicle is actually traveling. If VSC detects a loss of traction, two things happen to help correct the problem: First, engine output is reduced; then, brake force is applied to individual wheels as needed.

TRACTION CONTROL (TRAC)

TRAC helps maintain traction on wet, icy, loose or uneven surfaces. Like VSC, TRAC applies braking individually and reduces engine output to help assist the driver with control of the vehicle.

Possible Scenario

WITHOUT TRAC



WITH TRAC



4-WHEEL ANTI-LOCK BRAKE SYSTEM (ABS)

ABS helps ensure that you're able to continue steering during emergency braking. By "pulsing" the brake of each wheel more rapidly than would be humanly possible, ABS helps keep the brakes from locking up. Since the system repeatedly releases the brakes for fractions of a second, the wheels never stop rotating, which helps keep the vehicle from going into a skid.

ELECTRONIC BRAKE-FORCE DISTRIBUTION (EBD)

EBD helps keep the vehicle balanced when braking. During sudden stops, forward momentum causes the vehicle to tilt forward, reducing the brake effectiveness of the rear wheels. EBD responds by redistributing brake force from wheels with less braking effectiveness to wheels with more effectiveness. This helps prevent brake lockup. EBD is especially helpful when carrying cargo. When sensors detect extra load on the rear axle, brake pressure on the rear wheels is increased, exploiting the improved braking effectiveness extra weight can provide.

BRAKE ASSIST (BA)²

In emergency braking situations, a driver could fail to apply enough pressure to the brake pedal. BA can detect sudden or "panic" braking and apply additional brake pressure, taking full advantage of ABS and helping prevent a collision.

SMART STOP TECHNOLOGY (SST)³

At speeds greater than five miles per hour, when the accelerator is depressed first and the brakes are then applied firmly for longer than one-half second, SST is designed to help the driver bring the vehicle to a complete stop.

¹See footnote 18 in Disclaimers section. ²See footnote 19 in Disclaimers section. ³See footnote 20 in Disclaimers section.



INTERIOR



4x2 CrewMax Tundra Grade shown in Pyrite Mica.

WELL-EQUIPPED. EVEN IF YOUR LADDER IS CORPORATE.

You know Tundra has the right equipment for the job site, but it also has the interior appointments to serve as a proper office. The available center-console storage area is designed to hold hanging file folders inside or accommodate a laptop. *Bluetooth*^{®1} wireless technology makes it easy to consult with clients. And even while parked on the noisy job site, its insulated interior is quiet, so you can clearly hear that client or concentrate on your paperwork². It's also spacious: The Tundra CrewMax gives you ample elbow room for a six-man team. Looks like Tundra can double as a conference room too.



Double Cab interior shown in Graphite.
¹See footnote 4 in Disclaimers section. ²Be sure to obey all traffic rules and maintain awareness of road and traffic conditions. Toyota does not approve the use of portable handheld devices while driving.



CrewMax Limited Grade interior shown in Graphite with available DVD navigation system.

DISPLAY NAVIGATION¹ WITH ENTUNE™²

Featuring a 6.1-in. high-resolution touch-screen with split-screen capability and integrated backup camera³ display, this system also includes an AM/FM CD player, six speakers, SiriusXM Satellite Radio⁴ compatibility (additional hardware and subscription required) HD Radio™⁵ with iTunes® Tagging,⁶ USB⁷ port with iPod® connectivity and control, hands-free phone capability, phone book access, advanced voice recognition and music streaming via Bluetooth®⁸ wireless technology and more.

VOICE-ACTIVATED TOUCH-SCREEN DVD NAVIGATION

Featuring a 7-in. high-resolution touch-screen with integrated backup camera display, this system also includes JBL Synthesis® AM/FM 4-disc CD changer, six speakers including subwoofer, SiriusXM® Satellite Radio capability (includes three-month trial subscriptions to XM Select Package), auxiliary audio jack, USB port with iPod® connectivity, hands-free phone capability and music streaming via Bluetooth® wireless technology and more.

BLUETOOTH® MUSIC STREAMING

Tundra employs an advanced version of available Bluetooth® wireless technology, allowing you to stream tunes through the audio system with your compatible music streaming device.

[1] REAR-SEAT DVD ENTERTAINMENT SYSTEM

Tundra CrewMax enhances onboard entertainment with an available DVD system that lets rear-seat passengers enjoy movies, music, DVDs and digital games.

[2] BACKUP CAMERA

Tundra's available backup camera enhances the sideview mirrors by displaying what it can see behind you on the available integrated rearview mirror display. Especially helpful when hitching up a trailer.

[3] POWER THIGH SUPPORT

Tundra Limited and Platinum models feature a driver's seat with a seat cushion extension that provides additional support.



For more information about our available audio systems, as well as Bluetooth®-compatible features, please contact your local Toyota dealer.

¹See footnote 5 in Disclaimers section. ²See footnote 6 in Disclaimers section. ³See footnote 7 in Disclaimers section. ⁴See footnote 1 in Disclaimers section. ⁵See footnote 8 in Disclaimers section. ⁶See footnote 9 in Disclaimers section. ⁷See footnote 2 in Disclaimers section. ⁸See footnote 3 in Disclaimers section. ⁹See footnote 4 in Disclaimers section.

CREWMAX INTERIOR

CrewMax maximizes the space for your crew and their gear. Check out the class-leading rear leg room — 44.5 in., or nearly 4 ft. And CrewMax has the only slide-and-recline rear seat in its class. Plus, the 60/40 split rear seat slides, reclines and folds flat to create a hard work surface.





INTERIOR



Regular Cab Tundra Grade interior shown in Graphite with available SR5 Upgrade Package.

REGULAR CAB

Tundra Regular Cab accommodates your need for size, space and storage. The lower glove compartment is big enough to hold a standard-size steel drink bottle. And there's plenty more storage space behind the front seat — enough to stow a 5-gallon paint bucket with the seat all the way back.





DOUBLE CAB

The big Tundra Double Cab interior is accommodating where it counts. The rear seatback is set at a generous 22-degree angle, so your crew can stretch out in true comfort. And like every Tundra, the Double Cab features 3-point seatbelts and adjustable headrests at every seating position.



WORK TRUCK PACKAGE

Get back to basics with the Tundra Regular Cab or Double Cab with the Work Truck Package. From its durable heavy-duty all-weather flooring to its heavy-duty vinyl-trimmed seats, it's a straight-ahead work truck.



REAR UNDER-SEAT STORAGE BOX

Because you can never have too much storage, Tundra Double Cab has an available rear under-seat storage box to keep tools and other possessions off the floor and out of sight.



TUNDRA CAB CHOICES

CREWMAX MANPOWER MEETS HORSEPOWER.

- Short Bed (5.5 ft.) configuration
- Available in two engine sizes: 4.6L V8 and 5.7L V8
- 4x2 5.7L V8 features payload capacity up to 1665 lb¹
- 4x2 4.6L V8 rated for 1550-lb. maximum payload¹
- 4x2 5.7L V8 features towing capacity up to 9900 lb. when properly equipped²



DOUBLE CAB VERSATILITY NEVER WORKED HARDER.

- Available in Standard Bed (6.5 ft.) or Long Bed (8.1 ft.) configurations
- Available in three engine sizes: 4.0L V6, 4.6L V8 and 5.7L V8
- 4x2 5.7L V8 Standard Bed features payload capacity up to 1745 lb¹
- 4x2 4.6L V8 Standard Bed rated for 1615-lb. maximum payload¹
- 4x2 5.7L V8 Standard Bed features towing capacity up to 10,100 lb. when properly equipped²
- V6 Standard Bed offers maximum towing capacity up to 4500 lb²



Available with Standard or Long Beds.

REGULAR CAB REGULAR IN NAME ONLY.

- Available in Standard Bed (6.5 ft.) or Long Bed (8.1 ft.) configurations
- Available in three engine sizes: 4.0L V6, 4.6L V8 and 5.7L V8
- 4x2 5.7L V8 Long Bed features payload capacity up to 2090 lb. when properly equipped¹
- 4x2 4.6L V8 Standard Bed rated for 1870-lb. maximum payload¹
- 4x2 5.7L V8 Long Bed features standard towing capacity up to 10,400 lb²
- V6 Standard Bed offers maximum towing capacity up to 4900 lb²



Available with Standard or Long Beds.

¹See footnote 25 in Disclaimers section. ²See footnote 26 in Disclaimers section..

OPTIONS AND PACKAGES

OPTIONS

	REGULAR	DOUBLE		CREWMAX	
	TUNDRA	TUNDRA	LIMITED	TUNDRA	LIMITED
18-in. 5-spoke alloy wheels with P275/65R18 tires	O	O	S	O	S
20-in. 5-spoke alloy wheels with P275/55R20 tires	—	—	O	—	O
Tow Package — Includes towing receiver hitch, trailer brake controller prewire, 4.300 rear axle ratio (4.100 on 4.6L V8), TOW/HAUL mode switch, transmission fluid temperature gauge, supplemental engine cooler, supplemental transmission cooler, heavy-duty battery, 170-amp alternator and 7-pin connector (V8 models only)	S	P	S	P	S
Deck Rail System with four adjustable tie-down cleats	O	O	S	O	S
AM/FM CD player with MP3/WMA playback capability, six speakers (four in Regular Cab), SiriusXM Satellite Radio ¹ capability (includes three-month trial subscription to XM Select Package), auxiliary audio jack, USB ² port with iPod ^{®3} connectivity, hands-free phone capability and music streaming via Bluetooth ^{®4} wireless technology	O	O	—	O	—
Display Navigation ⁵ with Entune ^{™6} includes 6.1-in. high-resolution touch-screen with split-screen capability and integrated backup camera ⁷ display, AM/FM CD player with MP3/WMA playback capability, six speakers, SiriusXM Satellite Radio ¹ compatibility (additional hardware and subscription required), HD Radio ^{™8} with iTunes [®] Tagging, ⁹ auxiliary audio jack, USB ² port with iPod ^{®3} connectivity and control, hands-free phone capability, phone book access, advanced voice recognition, and music streaming via Bluetooth ^{®4} wireless technology	—	O	—	O	—
Voice-activated touch-screen DVD navigation system ⁵ includes 7-in. high-resolution touch screen with integrated backup camera ⁷ display, JBL [®] AM/FM 4-disc CD changer with MP3/WMA playback capability, 12 speakers including subwoofer (ten on Double Cab), SiriusXM Satellite Radio capability with NavTraffic ^{™11} (includes three-month trial subscription to XM Select Package and NavTraffic ^{™11}), auxiliary audio jack, USB ² port with iPod ^{®3} connectivity, hands-free phone capability and music streaming via Bluetooth ^{®4} wireless technology	—	—	O	—	O
Rear-seat DVD entertainment system with 9-in. display, RCA jacks, 115V AC power outlet, remote and two wireless headphones ¹⁰	—	—	—	—	O
Auto-dimming rearview mirror with integrated backup camera ⁷ display, compass and HomeLink ^{®11} universal transceiver	O	P	S	P	S
Anti-theft system with alarm and engine immobilizer ¹² (V8 models only)	O	O	S	O	S
Front and rear parking assist sonar	O	O	S	O	S
Heated power outside tow mirrors with turn signal indicators and manual-extend feature (5.7L V8 models only)	O	O	—	O	—
Heated power outside tow mirrors with turn signal indicators, and power-folding and manual-extend features	—	—	O	—	O
Sliding rear window with privacy glass	O/P	P	—	—	—
Running boards (V8 Standard and Short Bed models only)	—	O	O	O	O
Power tilt/slide moonroof with sliding sunshade (deletes overhead console with sunglasses storage)	—	—	—	O	O

For more information about our available audio systems, as well as Bluetooth^{®4}-compatible features, please contact your local Toyota dealer.

PACKAGES

LIMITED GRADE

	DOUBLE CAB	CREWMAX
PLATINUM PACKAGE (SEE DESCRIPTION ON PAGE 25)	—	P
TRD OFF-ROAD PACKAGE (SEE DESCRIPTION ON PAGE 25)	P	P
OFF-HIGHWAY Includes 2-position memory function for driver's seat, outside mirrors and steering wheel (not available with tow mirrors)	—	P
TUNDRA GRADE		
TRD ROCK WARRIOR PACKAGE (SEE DESCRIPTION ON PAGE 25)	P	P
TRD OFF-ROAD PACKAGE (SEE DESCRIPTION ON PAGE 25)	P	P
TRD SPORT PACKAGE (SEE DESCRIPTION ON PAGE 26)	P	P
CHROME APPEARANCE PACKAGE (SEE DESCRIPTION ON PAGE 26)	P	P
SPORT APPEARANCE PACKAGE Includes color-keyed front and rear bumpers and grille surround, front bucket seats with 8-way power-adjustable driver's seat with power lumbar support, 4-way adjustable front passenger seat, fog lamps, power horizontal sliding rear window with privacy glass. Replaces standard equipment column shifter with center console gated shift lever. (not available with Tow Package)	P	—
SR5 PACKAGE Includes front bucket seats with 8-way power-adjustable driver's seat with power lumbar support, 4-way adjustable front passenger seat and SR5 fabric-trimmed seating surfaces, fog lamps, power horizontal sliding rear window with privacy glass, under seat storage tray, privacy glass on rear side windows, and SR5 badge. Requires auto-dimming rearview mirror with compass and HomeLink®11 universal transceiver. Integrated backup camera ⁷ display included in either rearview mirror or available Display Navigation ⁵ with Entune. ^{TM6} Replaces standard equipment column shifter with center console gated shift lever	P	P
UPGRADE PACKAGE Includes front bucket seats with 8-way adjustable driver's seat with power lumbar support and 4-way adjustable front passenger seat, fog lamps (Standard Bed V8 models only). Requires auto-dimming rearview mirror with integrated backup camera ⁷ display, compass and HomeLink®11 universal transceiver. Integrated backup camera ⁷ display included in either rearview mirror or available Display Navigation ⁵ with Entune. ^{TM6} Replaces standard equipment column shifter with center console gated shift lever. Double Cab includes sliding rear window with privacy glass, rear under-seat storage tray, privacy glass on rear side windows	P	P
CONVENIENCE PACKAGE Includes fog lamps (Standard Bed V8 only on Double Cab). CrewMax includes auto-dimming rearview mirror with compass and HomeLink®11 universal transceiver. Double Cab includes sliding rear window with privacy glass on rear and side windows, and rear under-seat storage tray (also available with front bucket seats). Replaces standard equipment column shifter with center console gated shift lever	P	P
WORK TRUCK PACKAGE (SEE DESCRIPTION ON PAGE 26)	P	—

REGULAR CAB

TRD OFF-ROAD PACKAGE (SEE DESCRIPTION ON PAGE 25)	P
SPORT APPEARANCE PACKAGE Includes color-keyed front and rear bumpers and grille surround, front bucket seats with 4-way adjustable driver's seat, 4-way adjustable front passenger seat, fog lamps, sliding rear window with privacy glass, and power windows/door locks/outside mirrors, cruise control, remote keyless entry system, variable intermittent windshield wipers and carpet flooring (deletes standard tow equipment)	P
SR5 UPGRADE PACKAGE Includes front bucket seats with 4-way adjustable driver's seat, 4-way adjustable front passenger seat and SR5 fabric-trimmed seating surfaces, sliding rear window with privacy glass, power windows/door locks/outside mirrors, cruise control, remote keyless entry system, variable intermittent windshield wipers, carpet flooring and SR5 badge. Replaces standard equipment column shifter with center console gated shift lever	P
SR5 PACKAGE Includes power windows/doors/locks/outside mirrors, cruise control, remote keyless entry system, variable intermittent windshield wipers, carpet flooring, SR5 fabric-trimmed seating surfaces, front passenger fold-flat seat and SR5 badge	P
WORK TRUCK PACKAGE (SEE DESCRIPTION ON PAGE 26)	P

GRADES AND PACKAGES

PLATINUM PACKAGE 4x2 and 4x4

CREWMAX | LIMITED GRADE

Includes 20-in. split 5-spoke machine-finished alloy wheels with P275/55R20 tires, heated and ventilated front bucket seats with embroidered headrests, perforated leather-trimmed seating surfaces, chrome lower front bumper, wood-grain-style interior trim, power windows with driver and front passenger auto up/down, Glass Breakage Sensor (GBS);¹ Platinum badge and 2-position memory function for driver's seat, outside mirrors and steering wheel. Requires navigation system² and moonroof. (Available in the following exterior colors: Black, Barcelona Red Metallic, Silver Sky Metallic, Magnetic Gray Metallic or Super White only. Requires navigation system² and moonroof.)



LIMITED GRADE 4x2 and 4x4

DOUBLE CAB | 5.7L V8 ENGINE

CREWMAX | 5.7L V8 ENGINE

Includes 18-in. 5-spoke alloy wheels with P275/65R18 tires, color-keyed upper and lower front bumper, chrome grille surround with matte silver billet-style inner grille, fog lamps, chrome outside mirrors and door handles, Deck Rail System, backup camera³ display, leather-trimmed seating surfaces with heated power front bucket seats, center console, JBL® AM/FM CD player with MP3/WMA playback capability, Bluetooth®⁴ and SiriusXM Satellite Radio⁵ capability (includes three-month trial subscription to XM Select Package), Optitron gauges, dual zone automatic climate control and Tow Package.

Vehicle shown with available 20-in. 5-spoke alloy wheels.



TRD ROCK WARRIOR PACKAGE 4x4 only

DOUBLE CAB | TUNDRA GRADE WITH 5.7L V8 ENGINE

CREWMAX | TUNDRA GRADE WITH 5.7L V8 ENGINE

Includes 17-in. split 6-spoke gunmetal-color-finished TRD Rock Warrior forged alloy wheels with LT285/70R17 BFGoodrich® All-Terrain T/A tires, Bilstein® shock absorbers, fuel tank skid plates, color-keyed front bumper and grille surround, matte black rear bumper, fog lamps, sliding rear window with privacy glass (Double Cab only), front bucket seats with 8-way adjustable driver's seat with power lumbar support, 4-way adjustable front passenger seat and black fabric-trimmed seating surfaces and TRD Rock Warrior graphics. Requires auto-dimming rearview mirror with compass and HomeLink®⁶ universal transceiver. Integrated backup camera³ display included in either rearview mirror or available Display Navigation⁷ with Entune™⁸ Replaces standard equipment column shifter with center console gated shift lever. (Available in the following exterior colors: Black, Radiant Red, Magnetic Gray Metallic or Super White only.)



TRD OFF-ROAD PACKAGE 4x2 and 4x4

REGULAR CAB | TUNDRA GRADE WITH V8 ENGINES

DOUBLE CAB | TUNDRA AND LIMITED GRADES WITH V8 ENGINES

CREWMAX | TUNDRA AND LIMITED GRADES WITH V8 ENGINES

Includes 18-in. 5-spoke TRD Off-Road alloy wheels with P275/65R18 BFGoodrich® tires, off-road-tuned suspension, Bilstein® shock absorbers, sliding rear window with privacy glass (Regular Cab models only), engine (4x2 models only) and fuel tank skid plates, front tow hooks (4x2 models only), TRD Off-Road Package graphics. (Regular Cab includes SR5 Upgrade Package equipment. Replaces standard equipment column shifter with center console gated shift lever.)



¹See footnote 31 in Disclaimers section. ²See footnote 5 in Disclaimers section. ³See footnote 7 in Disclaimers section. ⁴See footnote 4 in Disclaimers section. ⁵See footnote 1 in Disclaimers section. ⁶See footnote 11 in Disclaimers section. ⁷See footnote 5 in Disclaimers section. ⁸See footnote 6 in Disclaimers section.

GRADES AND PACKAGES

TRD SPORT PACKAGE 4x2 only

DOUBLE CAB | TUNDRA GRADE WITH 5.7L V8 ENGINE

Includes 20-in. 5-spoke TRD Sport alloy wheels with P275/55R20 tires, color-keyed front and rear bumpers and grille surround, color-keyed door handles, fog lamps, front bucket seats with 8-way adjustable driver's seat with power lumbar support, 4-way adjustable front passenger seat and black fabric-trimmed seating surfaces seats and TRD Sport graphics. Replaces standard equipment column shifter with center console gated shift lever. (Available in the following exterior colors: Black or Radiant Red only.)

Vehicle shown with additional TRD accessories.



CHROME APPEARANCE PACKAGE 4x2 and 4x4

DOUBLE CAB | V8 ENGINES

CREWMAX | V8 ENGINES

Includes 18-in. chrome-clad steel wheels with P255/70R18 tires, chrome front door handles (CrewMax includes chrome rear door handles), chrome heated power outside mirrors and chrome exhaust tip.



TUNDRA GRADE 4x2 and 4x4

REGULAR CAB | V6 OR V8 ENGINES¹

DOUBLE CAB | V6 OR V8 ENGINES

CREWMAX | V8 ENGINES

Includes 18-in. Tundra Grade styled steel wheels with P255/70R18 tires, color-keyed upper and chrome lower front bumper with chrome grille surround and rear bumper, fabric-trimmed 40/20/40 split fold-down front bench seat with 8-way adjustable (4-way in Regular Cab) driver's seat and 4-way adjustable front passenger bench seat, dual zone air conditioning, power windows and door locks, variable intermittent windshield wipers, fabric interior and carpet flooring. (Double Cab and CrewMax include remote keyless entry system.)



WORK TRUCK PACKAGE 4x2 and 4x4

REGULAR CAB | TUNDRA GRADE WITH V6 OR V8 ENGINES¹

DOUBLE CAB | TUNDRA GRADE WITH V6 OR V8 ENGINES

Includes matte black upper and lower front bumper with matte black grille surround, heavy-duty vinyl-trimmed bench seat, heavy-duty all-weather flooring, black instrument panel and 2-speed windshield wipers. Cruise control available. Remote keyless entry, outside temperature gauge and courtesy lamps and foot lamps not included. Tachometer, voltmeter, engine oil temperature gauges not available with V6. 4-way driver's seat instead of 8-way on Double Cab only. Manual windows/door locks/outside mirrors on Regular Cab only.



¹Standard Bed not available with 5.7L V8.

FEATURES¹³

EXTERIOR

	REGULAR		DOUBLE		CREWMAX	
	TUNDRA	TUNDRA	LIMITED	TUNDRA	LIMITED	
Multi-reflector halogen headlamps with manual level control	S	S	S	S	S	S
Fog lamps (V8 Standard and Short Bed models only)	P	P	S	P	S	S
Matte black upper and lower front bumper with matte black grille surround	P	P	—	—	—	—
Color-keyed upper and chrome lower front bumper with chrome grille surround	S	S	—	S	—	—
Color-keyed front bumper with chrome grille surround and matte silver billet-style grille insert	—	—	S	—	—	S
Color-keyed upper and chrome lower front bumper with chrome grille surround and matte silver billet-style grille insert	—	—	—	—	—	P
Chrome rear bumper	S	S	S	S	S	S
Deck Rail System with four adjustable tie-down cleats	O	O	S	O	S	S
Deck rail and tailgate caps	S	S	S	S	S	S
Heated power outside mirrors	S	S	—	S	—	—
Chrome heated power and auto-dimming outside mirrors with turn signal indicators and power-folding feature	—	—	S	—	—	S
Heated power outside tow mirrors with turn signal indicators and manual-extend feature	O	O	—	O	—	—
Heated power outside tow mirrors with turn signal indicators and power-folding and manual-extend features	—	—	O	—	—	O
Power tilt/slide moonroof with sliding sunshade (deletes overhead console with sunglasses storage)	—	—	—	O	—	O
Two-speed windshield wipers	S	P	—	—	—	—
Variable intermittent windshield wipers (not available with Work Truck Package)	P	S	S	S	S	S
Windshield wiper de-icer	S	S	S	S	S	S
High Solar Energy-Absorbing (HSEA) glass	S	S	S	S	S	S
Easy lower and lift tailgate	S	S	S	S	S	S
Running boards (V8 Standard and Short Bed models only)	—	O	O	O	O	O
Front and rear mudguards	S	S	S	S	S	S
Front tow hooks (V8 models only; standard on 4x4 models)	P	P	P	P	P	P

INTERIOR

Dual zone air conditioning with individual temperature settings for driver and front passenger	S	S	—	S	—	—
Dual zone automatic climate control with individual temperature settings for driver and front passenger	—	—	S	—	—	S
AM/FM CD player with MP3/WMA playback capability, six speakers (four in Regular Cab), SiriusXM Satellite Radio ¹ compatible (additional hardware and subscription required) and auxiliary audio jack	S	S	—	S	—	—
AM/FM CD player with MP3/WMA playback capability, six speakers (four on Regular Cab), SiriusXM Satellite Radio ² capability (includes three-month subscription to XM Select Package), auxiliary audio jack, USB ² port with iPod ^{®3} connectivity and hands-free phone capability and music streaming via Bluetooth ^{®4} wireless technology	O	O	—	O	—	—
Display Navigation ⁵ with Entune ^{™6} includes 6.1-in. high-resolution touch-screen with split-screen capability and integrated backup camera ⁷ display, AM/FM CD player with MP3/WMA playback capability, six speakers, SiriusXM Satellite Radio ¹ compatibility (additional hardware and subscription required), HD Radio ^{™8} with iTunes [®] Tagging ² auxiliary audio jack, USB ² port with iPod ^{®3} connectivity and control, hands-free phone capability, phone book access, advanced voice recognition, and music streaming via Bluetooth ^{®4} wireless technology	—	O	—	O	—	—
JBL [®] AM/FM 6-disc CD changer with MP3/WMA playback capability, 12 speakers including subwoofer (ten on Double Cab), SiriusXM Satellite Radio ¹ capability (includes three-month trial subscription to XM Select Package), auxiliary audio jack, USB ² port with iPod ^{®3} connectivity, hands-free phone capability and music streaming via Bluetooth ^{®4} wireless technology	—	—	S	—	—	S
Voice-activated touch-screen DVD navigation system ⁵ with integrated backup camera ⁷ display, JBL [®] AM/FM 4-disc CD changer with MP3/WMA playback capability, 12 speakers including subwoofer (ten on Double Cab), SiriusXM Satellite Radio capability with NavTraffic ^{™11} (includes three-month trial subscription to XM Select Package and NavTraffic ^{™11}), auxiliary audio jack, USB ² port with iPod ^{®3} connectivity, hands-free phone capability and music streaming via Bluetooth ^{®4} wireless technology	—	—	O	—	—	O
Rear-seat DVD entertainment system with 9-in. display, RCA jacks, 115V AC power outlet, remote and two wireless headphones ¹⁰	—	—	—	—	—	O
Fabric-trimmed 40/20/40 split fold-down front bench seat; 8-way adjustable (4-way on Regular Cab) driver's seat; 4-way adjustable front passenger seat	S	S	—	S	—	—
Fabric-trimmed front bucket seats; 8-way adjustable (4-way on Regular Cab) driver's seat; 4-way adjustable front passenger seat	O	O	—	O	—	—
Fabric-trimmed front bucket seats; 8-way power-adjustable driver's seat with power lumbar support; 4-way adjustable front passenger seat	—	O	—	O	—	—
Leather-trimmed and heated front bucket seats; 10-way power-adjustable driver's seat with power thigh and lumbar support; 4-way power-adjustable front passenger seat with power lumbar support	—	—	S	—	—	S
Fabric-trimmed 60/40 split, fold-up rear seat	—	S	—	—	—	—
Fabric-trimmed 60/40 split, sliding, reclining, fold-flat rear seat	—	—	—	S	—	—
Leather-trimmed 60/40 split, fold-up rear seat	—	—	S	—	—	—
Leather-trimmed 60/40 split, sliding, reclining, fold-flat rear seat	—	—	—	—	—	S
Heavy-duty all-weather flooring	S	P	—	—	—	—
Carpet flooring	P	S	S	S	S	S
Cruise control	P	S	S	S	S	S
Analog instrumentation with color-illuminated speedometer, coolant temperature and fuel gauges; LCD display with odometer and trip meters; shift-position indicator	S ¹⁴	S ¹⁵	—	S	—	—

See numbered footnotes in Disclaimers section.

INTERIOR (CONTINUED)	REGULAR	DOUBLE		CREWMAX	
	TUNDRA	TUNDRA	LIMITED	TUNDRA	LIMITED
Analog instrumentation with color-illuminated speedometer, tachometer, voltmeter, coolant temperature, automatic transmission fluid, fuel and engine oil temperature gauges; LCD display with odometer and tripmeters; shift-position indicator	S ¹⁶	S ¹⁷ /P	—	P	—
Optitron instrumentation with color-illuminated speedometer, tachometer, voltmeter, coolant temperature, automatic transmission fluid, fuel and engine oil temperature gauges; LCD Multi-Information Display with customizable settings, odometer, tripmeter, instant/average fuel economy, distance to empty, average speed, trip timer; shift-position indicator and warning messages	—	—	S	—	S
Power windows with driver-side one-touch auto down and power door locks with shift-linked automatic lock/unlock feature (not available with Work Truck Package)	S	—	—	—	—
Power windows with driver-side one-touch auto down, power door locks with shift-linked automatic lock/unlock feature and remote keyless entry system with lock, unlock and panic functions (not available with Work Truck Package)	P	S	—	S	—
Power windows with driver and front passenger one-touch auto up/down, power door locks with shift-linked automatic lock/unlock feature and programmable auto door lock logic, and remote keyless entry system with lock, unlock and panic functions	—	—	S	—	S
Sliding rear window with privacy glass	O/P	P	—	—	—
Power horizontal sliding rear window with privacy glass	—	P	S	—	—
Power vertical sliding rear window with defogger and privacy glass	—	—	—	S	S
Auto-dimming rearview mirror with compass and HomeLink [®] universal transceiver	—	—	O	—	O/P
Auto-dimming rearview mirror with integrated backup camera ² display, compass, maplamps and HomeLink [®] universal transceiver	O	P	S	P	S
Overhead console with sunglasses storage	—	P	S	S	S
Fixed center console with covered storage compartment, removable utility tray, 12V auxiliary power outlet and hanging file folder storage (front bucket seats only)	P	P	S	—	—
Fixed center console with covered storage compartment, removable utility tray, 12V auxiliary power outlet, hanging file folder storage and second-row vents (front bucket seats only)	—	—	—	P	S
Rear under-seat storage compartment	—	P	—	—	—
Two front 12V auxiliary power outlets (additional rear 12V auxiliary power outlet on Double Cab and CrewMax)	S	S	S	S	S
Front maplamp (additional rear maplamp on Double Cab and CrewMax)	P	S	S	S	S
Four front cup holders (three on Limited Grade), four front bottle holders	S	S	S	S	S
SAFETY AND CONVENIENCE					
STAR SAFETY SYSTEM Star Safety System™ — includes Vehicle Stability Control (VSC) ¹⁸ Traction Control (TRAC), Anti-lock Brake System (ABS), Electronic Brake-force Distribution (EBD), Brake Assist (BA) ¹⁹ and Smart Stop Technology (SST) ²⁰	S	S	S	S	S
Driver and front outboard passenger airbags with Advanced Airbag System ¹⁷	S	S	S	S	S
Driver and front outboard passenger seat-mounted side airbags, driver and front passenger knee airbags and front and rear Roll-sensing Side Curtain Airbags (RSCA) ²¹	S	S	S	S	S
3-point seatbelts in all seating positions; driver-side Emergency Locking Retractor (ELR) and Automatic/Emergency Locking Retractor (ALR/ELR) on all passenger seatbelts	S	S	S	S	S
Driver and front passenger seatbelt pretensioners with force limiters	S	S	S	S	S
LATCH (Lower Anchors and Tethers for CHildren) includes lower anchors on outboard passenger seat and tether anchor on center seat	S	—	—	—	—
LATCH (Lower Anchors and Tethers for CHildren) includes lower anchors on outboard rear seats and tether anchor on rear center seat	—	S	S	S	S
Child-protector rear door locks	—	S	S	S	S
Tire Pressure Monitor System (TPMS) ²²	S	S	S	S	S
Daytime Running Lights (DRL)	S	S	S	S	S
Front and rear parking assist sonar	O	O	S	O	S
Trailer-Sway Control (TSC) ²³	S	S	S	S	S
Anti-theft system with alarm and engine immobilizer ¹² (V8 models only)	O	O	S	O	S
WHEELS					
A — 18-in. Tundra Grade styled steel wheels with P255/70R18 tires	S	S	—	S	—
B — 18-in. chrome-clad steel wheels with P275/65R18 tires	—	P	—	P	—
C — 18-in. 5-spoke alloy wheels with P275/65R18 tires	O	O	S	O	S
D — 20-in. 5-spoke alloy wheels with P275/55R20 tires	—	—	O	—	O
E — 20-in. 5-spoke TRD Sport alloy wheels with P275/55R20 tires	—	P	—	—	—
F — 17-in. split 6-spoke gunmetal-color-finished TRD Rock Warrior forged alloy wheels with LT285/70R17 BFGoodrich [®] All-Terrain T/A tires	—	P	—	P	—
G — 18-in. 5-spoke TRD Off-Road alloy wheels with P275/65R18 BFGoodrich [®] tires (V8 only)	P	P	P	P	P
H — 20-in. split 5-spoke machine-finished alloy wheels with P275/55R20 tires	—	—	—	—	P



See numbered footnotes in Disclaimers section.

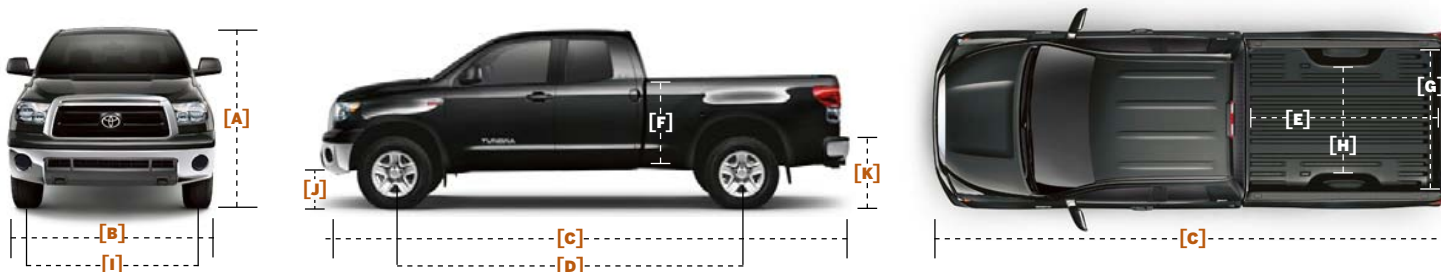
SPECIFICATIONS

MECHANICAL

	REGULAR		DOUBLE		CREWMAX	
	4x2	4x4	4x2	4x4	4x2	4x4
ENGINE						
4.0-Liter aluminum V6 DOHC 24-Valve with Dual Independent Variable Valve Timing with intelligence (VVT-i); 270 hp @ 5600 rpm; 278 lb.-ft. @ 4400 rpm	S	—	S	—	—	—
4.6-Liter aluminum i-FORCE V8 DOHC 32-Valve with Dual Independent Variable Valve Timing with intelligence (VVT-i); 310 hp @ 5600 rpm; 327 lb.-ft. @ 3400 rpm	O ¹⁵	—	O	S	S	S
5.7-Liter aluminum i-FORCE V8 DOHC 32-Valve with Dual Independent Variable Valve Timing with intelligence (VVT-i); 381 hp @ 5600 rpm; 401 lb.-ft. @ 3600 rpm	O ¹⁷	S	O	O	O	O
5.7-Liter aluminum i-FORCE V8 DOHC E85 Flex Fuel ²⁴ 32-Valve with Dual Independent Variable Valve Timing with intelligence (VVT-i); 381 hp @ 5600 rpm; 401 lb.-ft. @ 3600 rpm	—	O	—	O	—	O
IGNITION SYSTEM						
Electronic, with Toyota Direct Ignition (TDI)	S	S	S	S	S	S
Heavy-duty battery and starter	S	S	S	S	S	S
EMISSION RATING						
Low Emission Vehicle II (LEV-II) (V6 models only)	S	—	S	—	—	—
Ultra Low Emission Vehicle II (ULEV-II) (V8 models only)	O	S	O	S	S	S
TRANSMISSION						
5-speed Electronically Controlled automatic Transmission with intelligence (ECT-i), sequential shift mode and uphill/downhill shift logic (V6 models)	S	—	S	—	—	—
6-speed Electronically Controlled automatic Transmission with intelligence (ECT-i), sequential shift mode and uphill/downhill shift logic, TOW/HÅUL mode (4.6L and 5.7L V8 models with Tow Package)	O	S	O	S	S	S
DRIVETRAIN						
Rear-Wheel Drive with Automatic Limited-Slip Differential (Auto LSD)	S	—	S	—	S	—
4WDemand part-time 4WD with electronically controlled transfer case, Active Traction Control (A-TRAC) and Automatic Limited-Slip Differential (Auto LSD)	—	S	—	S	—	S
RATIOS 4.0L V6						
1st gear	3.520	—	3.520	—	—	—
2nd gear	2.042	—	2.042	—	—	—
3rd gear	1.400	—	1.400	—	—	—
4th gear	1.000	—	1.000	—	—	—
5th gear	0.716	—	0.716	—	—	—
6th gear	—	—	—	—	—	—
Reverse	3.224	—	3.224	—	—	—
Rear differential ratio/ring gear size (in.)	3.909/9.5	—	3.909/9.5	—	—	—
RATIOS 4.6L V8						
1st gear	3.520	—	3.520	3.520	3.520	3.520
2nd gear	2.042	—	2.042	2.042	2.042	2.042
3rd gear	1.400	—	1.400	1.400	1.400	1.400
4th gear	1.000	—	1.000	1.000	1.000	1.000
5th gear	0.716	—	0.716	0.716	0.716	0.716
6th gear	0.586	—	0.586	0.586	0.586	0.586
Reverse	3.224	—	3.224	3.224	3.224	3.224
Rear differential ratio/ring gear size (in.)	4.100/9.5	—	3.909/9.5	3.909/9.5	3.909/9.5	3.909/9.5
Rear differential with Tow Package (Standard on Regular Cab)	4.100	—	4.100	4.100	4.100	4.100
4WD transfer case (high/low)	—	—	—	1.000/2.618	—	1.000/2.618
RATIOS 5.7L V8						
1st gear	3.333	3.333	3.333	3.333	3.333	3.333
2nd gear	1.960	1.960	1.960	1.960	1.960	1.960
3rd gear	1.353	1.353	1.353	1.353	1.353	1.353
4th gear	1.000	1.000	1.000	1.000	1.000	1.000
5th gear	0.728	0.728	0.728	0.728	0.728	0.728
6th gear	0.588	0.588	0.588	0.588	0.588	0.588
Reverse	3.061	3.061	3.061	3.061	3.061	3.061
Rear differential ratio/ring gear size (in.)	4.300/10.5	4.300/10.5	4.100/10.5	4.100/10.5	4.100/10.5	4.100/10.5
Rear differential with Tow Package (Standard on Regular Cab)	4.300	4.300	4.300	4.300	4.300	4.300
4WD transfer case (high/low)	—	1.000/2.618	—	1.000/2.618	—	1.000/2.618
SUSPENSION						
Independent coil-spring high-mounted double-wishbone front suspension with stabilizer bar and low-pressure nitrogen gas-filled shock absorbers; live axle with trapezoidal multi-leaf rear suspension with staggered outboard-mounted low-pressure nitrogen gas-filled shock absorbers	S	S	S	S	S	S
STEERING						
Hydraulic power rack-and-pinion	S	S	S	S	S	S
Steering wheel turns (lock-to-lock)	3.71	3.71	3.71	3.71	3.71	3.71
Turning circle diameter, curb to curb (ft.) (Standard Bed/Long Bed) (Short Bed on CrewMax)	39.2/44.0	39.2/44.0	44.0/49.0	44.0/49.0	44.0	44.0
BRAKES						
Power-assisted ventilated 13.9-in. front disc brakes; ventilated 13.6-in. rear disc brakes and Star Safety System™	S	S	S	S	S	S

DIMENSIONS

	REGULAR		DOUBLE		CREWMAX	
	4x2	4x4	4x2	4x4	4x2	4x4
EXTERIOR DIMENSIONS (in.)						
A — Overall height	75.8	76.2	75.8	76.2	75.6	76.0
B — Overall width	79.9	79.9	79.9	79.9	79.9	79.9
C — Overall length (Standard Bed/Long Bed) (Short Bed on CrewMax)	209.8/228.7	209.8/228.7	228.7/246.7	228.7/246.7	228.7	228.7
D — Wheelbase (Standard Bed/Long Bed) (Short Bed on CrewMax)	126.8/145.7	126.8/145.7	145.7/164.6	145.7/164.6	145.7	145.7
E — Inside bed length (Standard Bed/Long Bed) (Short Bed on CrewMax)	78.7/97.6	78.7/97.6	78.7/97.6	78.7/97.6	66.7	66.7
F — Bed height	22.2	22.2	22.2	22.2	22.2	22.2
G — Bed width at tailgate	66.4	66.4	66.4	66.4	66.4	66.4
H — Bed width between wheelwells	50.0	50.0	50.0	50.0	50.0	50.0
I — Track (front/rear)	67.9/67.9	67.9/67.9	67.9/67.9	67.9/67.9	67.9/67.9	67.9/67.9
J — Ground clearance	10.2	10.6	10.2	10.4	10.0	10.4
K — Maximum load height	35.4	35.4	34.1	34.3	33.7	33.7

**INTERIOR DIMENSIONS (in.)**

Head room	40.2	40.2	40.2/38.7	40.2/38.7	40.2/38.7	40.2/38.7
Hip room	63.0	63.0	63.0/62.6	63.0/62.6	63.0/62.6	63.0/62.6
Leg room	42.5	42.5	42.5/34.7	42.5/34.7	42.5/44.5	42.5/44.5
Shoulder room	66.7	66.7	66.6/65.7	66.6/65.7	66.6/65.4	66.6/65.4
OFF-HIGHWAY						
APPROACH/DEPARTURE ANGLE (degrees)						
Standard Bed (5.5 ft. on CrewMax)	27/22-26	28/22-27	28/20-25	29/20-25	28/20-25	28-29/20-25
Long Bed	27-28/21-25	28/21	28/20	29/20	—	—
WEIGHTS AND CAPACITIES						
CURB WEIGHT (lb.)						
Tundra 4.0L V6 (Standard Bed/Long Bed)	4580/4685	—	4950/—	—	—	—
Tundra 4.6L V8 (Standard Bed) (Short Bed on CrewMax)	4730	—	5085	5385	5250	5550
Tundra 5.7L V8 (Standard Bed/Long Bed) (Short Bed on CrewMax)	—/4910	5080/5180	5155/5355	5460	5335	5625
Limited 5.7L V8 (Standard Bed) (Short Bed on CrewMax)	—	—	5180	5480	5355	5645
GVWR (lb.)						
Tundra 4.0L V6 (Standard Bed/Long Bed)	6200/6400	—	6400/—	—	—	—
Tundra 4.6L V8 (Standard Bed) (Short Bed on CrewMax)	6600	—	6700	6900	6800	7000
Tundra 5.7L V8 (Standard Bed/Long Bed) (Short Bed on CrewMax)	—/7000	6800/7200	6900/7000	7100/7200	7000	7200
Limited 5.7L V8 (Standard Bed) (Short Bed on CrewMax)	—	—	6900	7100	7000	7200
PAYLOAD²⁵ WITHOUT/WITH TOW PACKAGE (lb.)						
Tundra 4.0L V6 (Standard Bed)	1620/—	—	1450/—	—	—	—
Tundra 4.0L V6 (Long Bed)	1715/—	—	—	—	—	—
Tundra 4.6L V8 (Standard Bed) (Short Bed on CrewMax)	—/1870	—	1615/1465	1515/1315	1550/1385	1450/1275
Tundra 5.7L V8 (Standard Bed) (Short Bed on CrewMax)	—	—/1720	1745/1530	1640/1450	1665/1535	1575/1375
Tundra 5.7L V8 (Long Bed)	—/2090	—/2020	—/1645	—/1540	—	—
Limited 5.7L V8 (Standard Bed) (Short Bed on CrewMax)	—	—	—/1720	—/1620	—/1645	—/1555
FUEL TANK (gal.)						
	26.4	26.4	26.4	26.4	26.4	26.4
SEATING CAPACITY						
	3	3	6	6	6	6
TOWING²⁶ MAXIMUM (lb.)						
Tundra 4.0L V6 (Standard Bed/Long Bed)	4900/4800	—	4500	—	—	—
Tundra 4.6L V8 (Standard Bed) (Short Bed on CrewMax)	8600	—	8200 ²⁷	7900 ²⁷	8100 ²⁷	7700 ²⁷
Tundra 5.7L V8 (Standard Bed/Long Bed) (Short Bed on CrewMax)	—/10,400	9200/10,100	10,100 ²⁷ /10,000	9700 ²⁷ /9800	9900 ²⁷	9000 ²⁷
Limited 5.7L V8 (Standard Bed) (Short Bed on CrewMax)	—	—	10,000	9800	9300	9000
TIRES						
TYPE						
All-Season	S	S	S	S	S	S
SPARE						
Spare — Full-size mounted under body	S	S	S	S	S	S
MILEAGE ESTIMATES (mpg city/highway)²⁸						
4.0L V6	16/20	—	16/20	—	—	—
4.6L V8	15/20	—	15/20	14/19	15/20	14/19
5.7L V8	14/18	13/17	14/18	13/17	14/18	13/17

EXTERIOR COLORS



Black^{1,2,3}



Nautical Blue Metallic



Spruce Mica



Pyrite Mica



Barcelona Red Metallic¹



Radiant Red^{2,3}



Magnetic Gray Metallic^{1,3}



Silver Sky Metallic¹

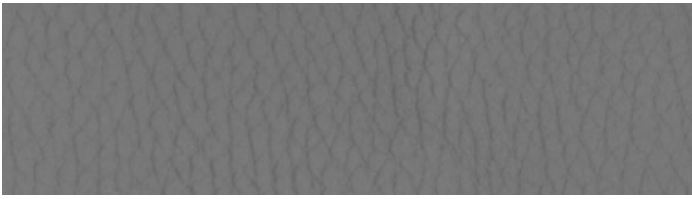


Super White¹⁻³

Not all colors and trims are available on all models and packages. For more on interior and exterior color availability, go to toyota.com and click "Build Your Toyota" or visit your local Toyota dealer.

¹Platinum Package available with Black, Barcelona Red Metallic, Magnetic Gray Metallic, Silver Sky Metallic or Super White only. ²TRD Sport Package available with Black or Radiant Red only. ³TRD Rock Warrior Package available with Black, Radiant Red, Magnetic Gray Metallic or Super White only.

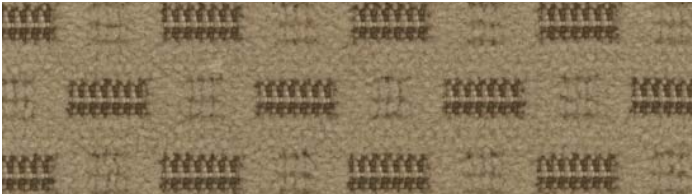
INTERIOR COLORS



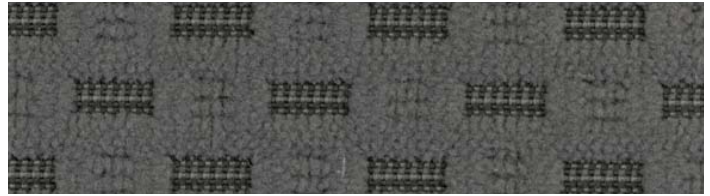
Graphite Vinyl¹



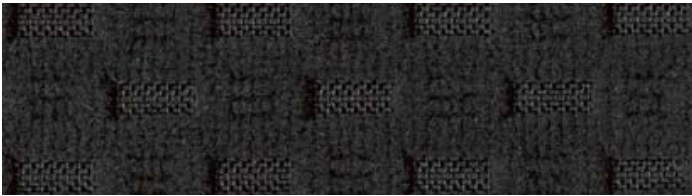
Graphite Fabric



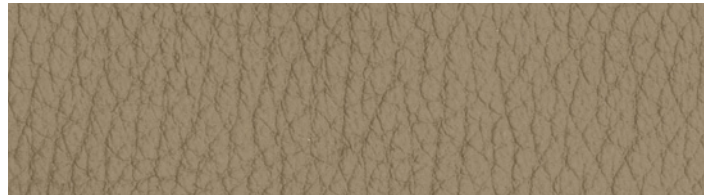
Sand Beige Fabric SR5 Package²



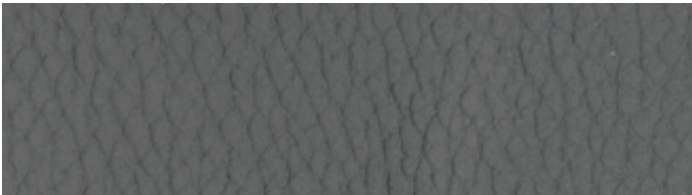
Graphite Fabric SR5 Package



Black Fabric SR5 Package



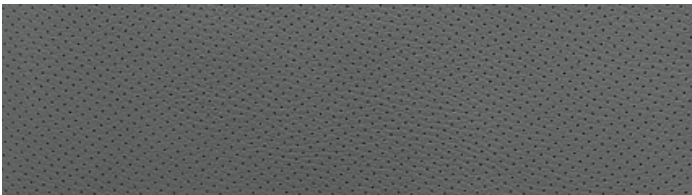
Sand Beige Leather²



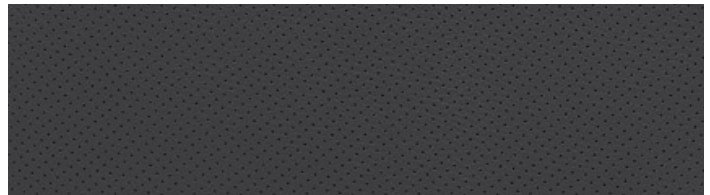
Graphite Leather



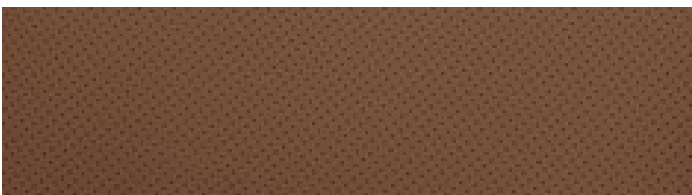
Red Rock Leather³



Perforated Graphite Leather⁴



Perforated Black Leather⁴



Perforated Red Rock Leather⁵

¹Available with Work Truck Package only. ²Not available with Magnetic Gray Metallic or Silver Sky Metallic. ³Not available with Barcelona Red Metallic or Radiant Red. ⁴Available with Platinum Package on Black, Barcelona Red Metallic, Magnetic Gray Metallic, Silver Sky Metallic or Super White only. ⁵Available with Platinum Package on Black, Magnetic Gray Metallic, Silver Sky Metallic or Super White.

GENUINE TOYOTA ACCESSORIES

You own it. But there are a few things you might want to do before it's really yours. Maybe it needs different wheels, tube steps, tie-downs, cross bars or a trailer brake controller for doing stuff that only matters to you. Whatever it is, ask your sales associate to see the 2012 Tundra Accessories brochure, a soup-to-nuts catalog of Genuine Toyota Accessories designed to give your Tundra the finishing touches that make it unmistakably yours. For a complete list of accessories, go to toyota.com/tundra

EXTERIOR

20-in. machined star 5-spoke alloy wheels²⁹
 Brushed stainless steel step boards
 Chrome exhaust tip
 Deck rail
 Doorsill protectors
 Front skid plate
 Hood protector
 Mini tie-downs with utility hook
 Tonneau cover
 Tube steps (black or chrome)

TOWING

Towing receiver hitch
 Trailer ball

INTERIOR

All-weather floor mats³⁰
 Carpet floor mats³⁰
 Emergency assistance kit
 First aid kit
 Remote Engine Starter
 Seatback cargo net
 Seatback cargo net
 SiriusXM Satellite Radio¹
 Under-seat storage
 Wireless headphones¹⁰

BED

Bed cleats
 Bed extender
 Bedliner
 Bed mat
 Bed step
 Cargo divider
 Cargo net (exterior)
 Deck rail locking bike attachment

SECURITY

Spare tire lock
 Vehicle Intrusion Protection (VIP) Glass Breakage Sensor (GBS)³¹
 Vehicle Intrusion Protection (VIP) RS3200 Security System³²
 Wheel locks

TRD PERFORMANCE

TRD 17" off-road wheels
 TRD 22" 5-spoke forged aluminum wheels
 TRD billet aluminum oil cap
 TRD cold air intake system
 TRD high-performance brake kit
 TRD lowering kit
 TRD performance filter
 TRD side exit dual exhaust
 TRD supercharger³³

EXTERIOR



20-in. machined star 5-spoke alloy wheels²⁹



Brushed stainless steel step boards



Tube steps (black or chrome)



Front skid plate



Tonneau cover

INTERIOR



All-weather floor mats³⁰



Remote Engine Starter



Seatback cargo net



Under-seat storage



SiriusXM Satellite Radio¹

BED ACCESSORIES



Bed extender



Bedliner



Bed step



Cargo divider



Deck rail locking bike attachment

TRD PERFORMANCE



TRD 17-in. forged off-road alloy wheels



TRD cold air intake system



TRD high-performance brake kit



TRD cat-back exhaust system



TRD supercharger³³

See numbered footnotes in Disclaimers section.

DISCLAIMERS

1. XM services require a subscription after trial period, and are sold separately or as a package. **Subscriptions governed by SiriusXM Customer Agreement; see www.siriusxm.com. If you decide to continue your XM service at the end of your complimentary trial, the plan you choose will automatically renew and bill at then-current rates until you call 1-866-635-2349 to cancel.** Fees and programming subject to change. Available only to those at least 18 years of age in the 48 contiguous United States and D.C. 2. May not be compatible with all mobile phones, MP3/WMA players and like models. 3. iPod® is a registered trademark of Apple Inc. All rights reserved. 4. The Bluetooth® word mark and logos are registered trademarks owned by Bluetooth SIG, Inc. and any use of such marks by Toyota is under license. Other trademarks and trade names are those of their respective owners. The Bluetooth® wireless technology phones listed on toyota.com have been tested for compatibility with Toyota vehicles. Performance will vary based on phone software version, coverage and your wireless carrier. Phones are warranted by their manufacturer, not Toyota. 5. Availability and accuracy of the information provided by the navigation system or any XM services mentioned (if installed) are dependent upon many factors. Use common sense when relying on information provided. Services not available in every city or roadway. Periodic navigation updates available at additional cost. See your *Navigation System Owner's Manual* or contact XM for details. 6. Be sure to obey traffic regulations and maintain awareness of road and traffic conditions. Select Entune™ apps use a large amount of data and you are responsible for all data charges. Apps and services vary by phone and carrier. Not all apps and data services are available initially. Apps identified by "TM" or "®" are trademarks or registered trademarks of their respective companies and cannot be used without permission. See toyota.com/entune for the latest information regarding apps and services. 7. The backup camera does not provide a comprehensive view of the rear area of the vehicle. You should also look around outside your vehicle and use your mirrors to confirm rearward clearance. Cold weather will limit effectiveness and view may become cloudy. 8. HD Radio™ Technology manufactured under license from iBiquity Digital Corporation U.S. and Foreign Patents. HD Radio™ and the HD, HD Radio, and "Arc" logos are proprietary trademarks of iBiquity Digital Corp. 9. iTunes® Tagging is a registered trademark of Apple Inc. All rights reserved. 10. Headphones are for passenger use only. Do not use while operating vehicle. 11. HomeLink® is a registered trademark of Johnson Controls, Inc. 12. The engine immobilizer is a state-of-the-art anti-theft system. When you insert your key into the ignition switch, the key transmits an electronic code to the vehicle. The engine will only start if the code in the transponder chip inside the key matches the code in the vehicle's immobilizer. Because the transponder chip is embedded in the key, it can be costly to replace. If you lose a key, your Toyota dealer can help, or you can find a qualified independent locksmith to replace your key or perform high-security key services at www.aloa.org 13. Toyota strives to build vehicles to match customer interest and thus they typically are built with popular options and option packages. Not all options/packages are available separately and some may not be available in all regions of the country. See toyota.com for information about options/packages commonly available in your area. If you would prefer a vehicle without any or with different options, contact your dealer to check for current availability or the possibility of placing a special order. 14. V6 models only. 15. Standard Bed models only. 16. V8 models only. 17. Long Bed models only. 18. Vehicle Stability Control (VSC) is an electronic system designed to help the driver maintain vehicle control under adverse conditions. It is not a substitute for safe driving practices. Factors including speed, road conditions and driver steering input can all affect whether VSC will be effective in preventing a loss of control. Please see your *Owner's Manual* for further details. 19. Brake Assist is designed to help the driver take full advantage of the benefits of ABS. It is not a substitute for safe driving practices. Braking effectiveness also depends on proper brake-system maintenance and tire and road conditions. 20. Smart Stop Technology operates only in the event of certain simultaneous brake and gas pedal applications. When engaged, the system will reduce engine power to help the brakes bring the vehicle to a stop. Factors including speed, road conditions and driver input can all impact stopping distance. Smart Stop Technology is not a substitute for safe and attentive driving and does not guarantee instant stopping. Please see your *Owner's Manual* for further details. 21. All the airbag (AB) systems are Supplemental Restraint Systems. All ABs (if installed) are designed to inflate only under certain conditions and in certain types of severe collisions: frontal and knee ABs typically inflate in frontal collisions; side and side curtain ABs in side collisions; Roll-Sensing Curtain ABs at a severe tilt degree, roll or lateral G-force. In all other accidents, the ABs will not inflate. To decrease the risk of injury from an inflating AB, always wear seatbelts, sit upright in the middle of the seat as far back as possible and do not lean against the door. Do not put objects in front of an AB or around the seatback. Do not use a rearward-facing child seat in any front passenger seat. The force of an inflating AB may cause serious injury or death. See your *Owner's Manual* for further information/warnings. 22. The Toyota Tire Pressure Monitor alerts the driver when tire pressure is critically low. For optimal tire wear and performance, tire pressure should be checked regularly with a gauge; do not rely solely on the monitor system. See your *Owner's Manual* for details. 23. Trailer-Sway Control (TSC) is an electronic system designed to help the driver maintain vehicle control under adverse conditions. It is not a substitute for safe driving practices. Factors including speed, road conditions and driver steering input can all affect whether TSC will be effective in preventing a loss of control. Please see your *Owner's Manual* for further details. 24. Flex Fuel Vehicles not available in every state. In states where available, all 4x4 5.7L V8 models are FFV. Flex Fuel Vehicles use E85, gasoline or a combination of both. Estimated mileage will vary. Consult your dealer for nearest E85 filling stations or see toyota.com for further details. 25. Payload Capacity is the calculation of GVWR minus curb weight and should be used for comparison purposes only. The maximum amount of passenger and cargo weight your vehicle can carry is the Load Carrying Capacity indicated on the label(s) on the driver's doorjamb. 26. Before towing, confirm your vehicle and trailer are compatible, hooked up and loaded properly and that you have any necessary additional equipment. Do not exceed any Weight Ratings and follow all instructions in your *Owner's Manual*. The maximum you can tow depends on the total weight of any cargo, occupants and available equipment. Calculated with new SAE J2807 method. 27. Requires Tow Package. 28. 2012 EPA-estimated mileage. Actual mileage will vary. 29. 20-inch performance tires are often expected to experience greater tire wear than conventional tires. Tire life may be substantially less than mileage expectancy, depending upon tires used and driving conditions. 30. This floor mat was designed specifically for use in your model and model year vehicle and SHOULD NOT be used in any other vehicle. To avoid potential interference with pedal operation, each mat must be secured with retention hooks/clips. Do not install a floor mat on top of an existing floor mat. 31. Available for vehicles with factory security. 32. Available for vehicles with factory remote keyless entry. 33. The TRD supercharger is to be sold only as a dealer-installed or over-the-counter option after retail sale of the vehicle. The supercharger may not be sold to the customer at the same time as the new vehicle and may not be financed together with the new vehicle. The TRD supercharger is not compatible with Flex Fuel Vehicles.

TOYOTA FINANCIAL SERVICES*



Toyota helps you get more out of every dollar you spend. By rewarding you for every purchase you make, the Toyota Rewards Visa® adds even more value to doing the things you love.

Turn everything you buy into points to redeem toward parts, accessories or an eligible vehicle purchase or lease at your Toyota dealer. Earn 5 points for every \$1 spent at participating Toyota dealers and 1 point for every \$1 spent everywhere else Visa is accepted.*

Visit www.toyotarewardsvisa.com for complete details.

Toyota Financial Services (TFS)[†] is a leading provider of automotive financial services, offering an extensive line of financing plans along with a variety of vehicle and payment protection products to Toyota customers and dealers in the U.S. For more information on TFS products and services, visit www.toyotafinancial.com

*On approved credit. You must have a valid permanent home address in the 50 United States or the District of Columbia. Terms, conditions and restrictions apply and are fully described in the Toyota Rewards Visa Cardmember Agreement and the Toyota Rewards Program Terms and Conditions received with your card. Points earned are based on net purchases. Points-earning maximums apply and points will expire as described in the Rewards Terms and Conditions. Redemption only available at participating Toyota dealerships in the continental U.S. and Alaska. Points cannot be redeemed for cash. Please contact your participating Toyota dealer for information regarding restrictions your dealer may impose on the use of credit cards related to vehicle purchases or leases. The creditor and issuer of the Toyota Rewards Visa is Toyota Financial Savings Bank. Toyota Financial Services is a service mark used by Toyota Financial Savings Bank.

[†]Toyota Financial Services is a service mark for Toyota Motor Credit Corporation and Toyota Motor Insurance Services, Inc.

WARRANTIES

Every Toyota Car, Truck and SUV is built to exceptional standards. And that's not idle boasting. We back it up with these Limited Warranty Coverages:

Basic: 36 months/36,000 miles (all components other than normal wear and maintenance items).

Powertrain: 60 months/60,000 miles (engine, transmission/transaxle, drive system, seatbelts and airbags).

Rust-Through: 60 months/unlimited miles (corrosion perforation of sheet metal).

Emissions: Coverages vary under Federal and California regulations. Refer to applicable *Warranty and Maintenance Guide* for details.

Accessories: For Genuine Toyota Accessories purchased at the time of the new vehicle purchase, the Toyota Accessory Warranty coverage is in effect for 36 months/36,000 miles from the vehicle's in-service date, which is the same coverage as the Toyota New Vehicle Limited Warranty. For Genuine Toyota Accessories purchased after the new vehicle purchase the coverage is 12 months, regardless of mileage, from the date the accessory was installed on the vehicle, or the remainder of any applicable new vehicle warranty, whichever provides greater coverage, with the exception of car covers. Car covers are warranted for 12 months from the date of purchase and do not assume any coverage under the Toyota New Vehicle Limited Warranty.

You may be eligible for transportation assistance if it's necessary that your vehicle be kept overnight for repairs covered under warranty. Please see your authorized Toyota dealership for further details.

For complete details about Toyota's warranties, please visit www.toyota.com, refer to the applicable *Warranty and Maintenance Guide* or see your Toyota dealer.

Toyota Tundra is designed to meet most off-road driving requirements. Abusive use may result in bodily harm or damage. Toyota encourages responsible operation to protect you, your vehicle and the environment. Seatbelts should be worn at all times. Please do not allow passengers to ride in the cargo area. Towing receiver hitches/ball mount kits are not intended to provide crash protection. For details on vehicle specifications, standard features and available equipment in your area, contact your Toyota dealer. A vehicle with particular equipment may not be available at the dealership. Ask your Toyota dealer to help locate a specifically equipped vehicle.

All information presented herein is based on data available at the time of posting, is subject to change without notice and pertains specifically to mainland U.S.A. vehicles only. Prototypes shown. Actual production vehicles may vary.



For Toyota Mobility program details, go to www.toyota.com/mobility or call the Toyota Customer Assistance Center at 1-800-331-4331

