



Exhaust Finisher
Aluminum trim pieces add a serious performance look to the rear of STI.
E7710FG030



Body Side Molding
Attractive, color-matched moldings coordinate with the styling of the vehicle while helping to protect doors from unsightly dings.

J101SFG000EN	(Dark Gray Metallic)
J101SFG000RL	(Lightning Red)
J101SFG000VW	(Obsidian Black Pearl)
J101SFG000WU	(Satin White Pearl)
J101SFG000TI	(Spark Silver Metallic)
J101SFG000PG	(WR Blue Mica)



STI Front Lip Spoiler
STI Front Lip Spoiler gives WRX and WRX STI a mean, ground-hugging attitude.
E2410FG110 (WRX)
E2410FG120 (WRX STI)



SPT Boost Gauge
Displays engine vacuum in inches of Hg and boost in PSI. Bright red illumination matches the vehicle instrument panel lighting and goes dark when the engine is turned off. Kit includes mounting cup and bracket.
H501SFG500



Footwell Illumination Kit
Casts a groovy blue glow onto the front floor area. Also available in red.
H201SSC000 (Blue)
H201SSC100 (Red)



Cargo Net - Rear
Neatly holds cargo upright and prevents it from sliding while the vehicle is in motion.
F551SFG100

Rear Cargo Tray
Helps protect cargo area from dirt and spills. Can be easily removed and rinsed clean.
J501SFG300JH

Cargo Net - Rear Seat Back
Additional cargo net storage to keep the cargo area organized.
F551SFG200



Heavy-Duty Roof Cargo Basket
Constructed of powder-coated steel. Includes mounting hardware, black stretch net with hooks and a custom fairing to help deflect wind and reduce noise. Measures 44" L x 39" W x 6.5" H.
E361SSA200
E361SSA100 (Bike Carrier - Fork Mount)
E3610LS430 (Bike Wheel Holder)

Shown with Bike Carrier - Fork Mount and Bike Wheel Holder (both sold separately).

Kayak Carrier
Cradles and securely transports most kayak hull shapes. Includes straps with padded buckles.
E361SXA200 (Kayak Carrier)
E361SXA100 (Clamps)

††† Roof Carrier Bars required. Consult vehicle owner's manual for total roof load limit.



Roof Cargo Carrier
Provides 13 cubic feet of lockable storage capacity. Opens from rear to accommodate loading from three sides. Measures 56" L x 36" W x 18" H.
E361SAG200



Roof Cargo Carrier - Extended
Provides 16 cubic feet of lockable storage capacity. Convenient dual-side opening allows for loading from either side of the vehicle. Measures 76" L x 36" W x 16" H.
E361SAJ200



Ski and Snowboard Carrier
New design holds up to six pairs of skis or four snowboards. May also be used to carry fishing rods.
E361SFG300 (Ski Carrier)
E3610AS820 (Clamps)

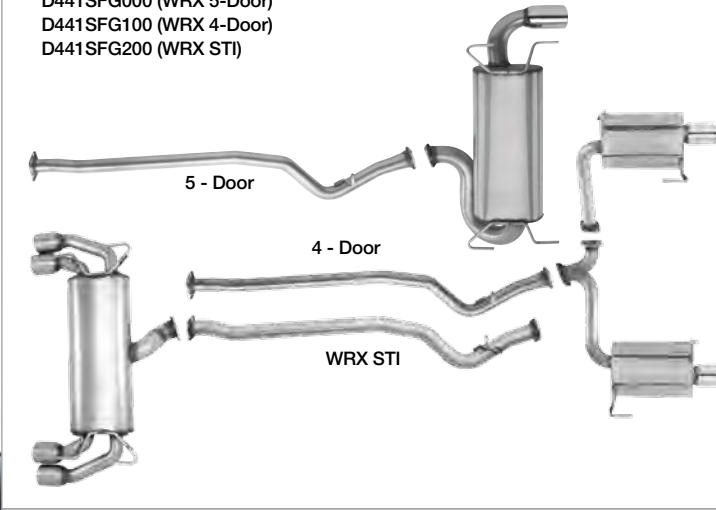


Bike Carrier - Universal Fork Mount
New! Finally, a fork-mount bike carrier that fits aero, round, and square cross bar shapes without special clamps. It features quick and easy tool-free installation, and an easy-to-adjust sliding wheel tray that makes positioning the rear wheel a snap.
E361SAJ300



SPT Performance Exhaust System
These exhaust systems feature full stainless steel construction with smooth mandrel bends for low restriction and that famous boxer engine sound. Both systems incorporate optimized tubing diameters and exhaust tips that are polished and etched with the SPT logo.

D441SFG000	(WRX 5-Door)
D441SFG100	(WRX 4-Door)
D441SFG200	(WRX STI)



License Plate Frames
Frames are available with a variety of UV resistant polyurethane logos and come in either mirror polish or matte black.

Matte Black	Polished Stainless Steel
SOA342L124 (SPT)	SOA342L121 (SPT)
SOA342L125 (WRX)	SOA342L122 (WRX)
SOA342L126 (STI)	SOA342L123 (STI)
	SOA342L127 (Subaru)



Front License Plate Bracket
Stainless steel with black powder coated finish. Includes mounting hardware.
SOA342L120



Slim License Plate Frames
Manufactured from heavy-gauge 304 stainless steel that will not rust or corrode. Kit includes hardware hider caps.
SOA342L104 (Polished Stainless Steel)
SOA342L105 (Matte Black)



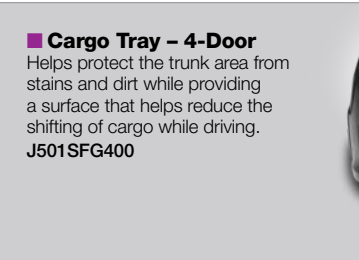
Euro-Style Marque Plates
Manufactured from 304-stainless steel and available with several different logos and finishes. Kit includes hardware hider caps.
SOA342L130 (WRX-Stainless Steel)
SOA342L131 (WRX-Matte Black)
SOA342L132 (STI-Stainless Steel)
SOA342L133 (STI-Matte Black)



Key Fob
Made from 1/8" thick 304 stainless steel, with a brushed finish and permanent black laser etched graphics.
SOA342L115 (STI)
SOA342L116 (SPT)
SOA342L117 (WRX)
SOA342L129 (Subaru)



Cargo Nets - 4-Door
Holds smaller cargo items upright inside the trunk on the Impreza 4-door. Kit includes 2 nets.
F551SFG000



Cargo Tray - 4-Door
Helps protect the trunk area from stains and dirt while providing a surface that helps reduce the shifting of cargo while driving.
J501SFG400



Sport Mesh Grille
Bold metal mesh design adds an aggressive look to Impreza WRX and STI. Grille comes pre-painted and ready to install.



STI Models (with STI Badge)

J1010FG200EN	(Dark Gray Metallic)
J1010FG200RL	(Lightning Red)
J1010FG200VW	(Obsidian Black Pearl)
J1010FG200WU	(Satin White Pearl)
J1010FG200TI	(Spark Silver Metallic)
J1010FG200PG	(WR Blue Mica)

WRX Models (without STI Badge)

J1010FG101EN	(Dark Gray Metallic)
J1010FG101RL	(Lightning Red)
J1010FG101VW	(Obsidian Black Pearl)
J1010FG101WU	(Satin White Pearl)
J1010FG101TI	(Spark Silver Metallic)
J1010FG101PG	(WR Blue Mica)

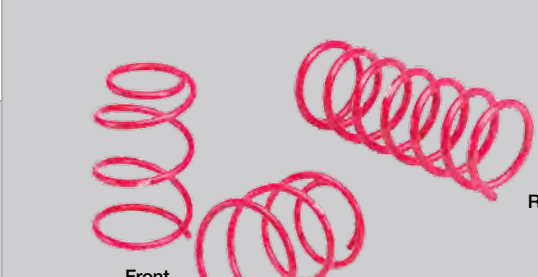
Chrome Sport Grille
New design adds a custom JDM look to WRX and WRX STI. One color fits all.
J1010FG040



Bumper Corner Moldings
Helps protect the corners of painted bumpers from scratches and dings. Kit includes four moldings.
E7710AS200



STI Performance Springs
STI springs are stiffer than stock and lower the vehicle ride height by about 10mm. The lower center of gravity can reduce body roll and result in noticeably improved handling.
B2010FG200 (STI Front - 2 required)
B2010FG300 (STI Rear - 2 required)



Roof Carrier Bars
Can be installed or removed in minutes. Fits both 4- and 5-door models and are compatible with most Genuine Subaru roof attachments and carriers.
E361SFG400



Bike Carrier - Roof Mounted
Each kit securely transports one bicycle. Lockable padded jaws clamp onto a bike with a 1"-3" downtube and hold it securely on the roof of the vehicle.
E361SXA300 (Bike Carrier)
E361SXA100 (Clamps)

Increased wind noise may be experienced when Roof Carrier Bars are installed and moonroof is open. If wind noise is encountered, Roof Carrier Bars should be removed when not in use.

2010 WRX/STI Accessories

■ Moonroof Air Deflector

Helps reduce wind noise and sun glare.
F541SFG000

Increased wind noise may be experienced when Roof Carrier Bars are installed and moonroof is opened. If wind noise is encountered, Roof Carrier Bars should be removed when not in use.



■ Fog Light Kit

Casts a low and wide beam of light to enhance vision in inclement weather.
H4510FG000 (WRX)
H4510FG030 (STI)



■ Rear Bumper Cover

Helps protect the upper surface of the painted bumper from scratches and dings during loading and unloading.
E771SFG000 (5-Door Model)



■ Fog Light Protector

Impact resistant acrylic material shields fog lights from stone and gravel impacts. Installs in minutes and can help provide years of protection.
E231SFG100 (WRX)



■ Auto-Dimming Mirror with Compass

Mirror darkens when headlights are detected from behind the vehicle. Includes integrated electronic compass.
H501SFG000



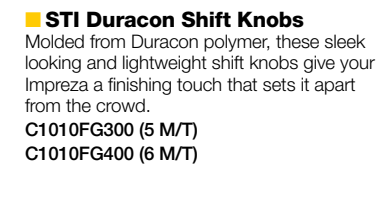
■ Auto-Dimming Mirror with Compass and HomeLink®

Mirror darkens when headlights are detected from behind the vehicle. Includes electronic compass and three integrated HomeLink buttons which can be programmed to operate most garage door openers and other HomeLink compatible devices.
H501SXA201
H501SSA040 (Installation Kit)



■ STI Shift Knobs

The ultimate shift knob for your Impreza. STI shift knobs combine the highest quality aluminum and leather materials, ergonomic shapes, and ideal weight balance.
C1010FG000 (5 M/T)
C1010FG100 (6 M/T)



■ STI Duracon Shift Knobs

Molded from Duracon polymer, these sleek looking and lightweight shift knobs give your Impreza a finishing touch that sets it apart from the crowd.
C1010FG300 (5 M/T)
C1010FG400 (6 M/T)



■ MOMO Shift Knob

Machined aluminum shift knob features a satin finish and perforated leather accents. Feels great in the palm of your hand and adds a stylish performance look to your WRX.
C1010SE000 (5 M/T)

■ Security System Upgrade - Shock Sensor

Activates security system alarm when impact to the vehicle is detected.
H7110FG010



■ Wheel Locks

Helps to deter theft of wheels and tires.
B321SFG000 (Alloy Wheels)



■ STI Short Throw Shifter

Significantly reduces shift throw lengths for crisper shifts and sportier driving feel.
C1010AG001 (5 M/T)
C1010FG600 (6 M/T)



■ STI Shifter Bushing

Improves shifting precision when used in conjunction with the STI Short Throw Shifter.
B0220FG300



■ Rear Cup Holder

Provides two cup holders for rear seat passengers. Retracts into center console when not in use.
J201SFG000JC (WRX)



■ All-Weather Floor Mats

Custom-fitted, heavy-gauge floor mats help protect vehicle carpet from sand, dirt and moisture.
J501SFG200



■ Ash Tray

Fits conveniently in the center console cup holder. Easily removed to empty contents.
92172AG040
F6010FG010 (Mounting Sleeve)

■ Battery Warmer

Warms vehicle's battery for easier starting in extremely cold weather. Plugs into a household electrical outlet.
J6010FS000



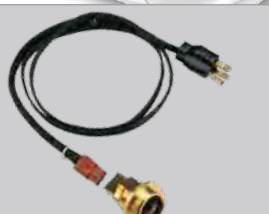
■ Car Cover

Helps protect the exterior of your Impreza. Made of lightweight breathable material.
M001SFG500 (4-Door)
M001SFG800 (5-Door)
M0010AS020 (Car Cover Bag)



■ Engine Block Heater

Warms engine coolant to promote easier starting in extreme cold conditions. Plugs into a household electrical outlet.
A0910AS100



■ Center Armrest Extension

Raises up and forward for additional comfort when driving.
J2010AG000JD



■ Media Hub

Play music through the vehicle's stereo system from your iPod or USB mass storage device and control it using the radio and steering wheel buttons. Displays song information on radio screen and charges most portable music devices.
H621SFG600 (Excludes NAVI)
H621SFG700 (NAVI)



■ Media Hub with Streaming Audio (not shown)

Includes all the features of Media Hub plus the ability to wirelessly stream music using Bluetooth® technology into the vehicle's stereo system.
H621SFG800 (Excludes Bluetooth & NAVI)

User experience varies by music storage device. Not all devices are compatible. Details at subaru.com/MediaHub.



■ BlueConnect®

Bluetooth wireless technology combined with advanced voice recognition software allow you to make and receive calls, store phonebook information, and recognize up to seven different cell phones. Voice recognition supports English, North American Spanish and Canadian French.
H001SFG500 (Excludes NAVI)

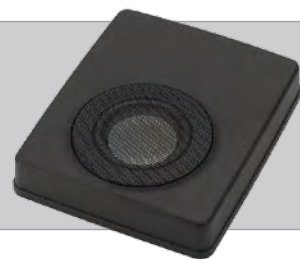
Some phones may not be compatible. Details at subaru.com/Bluetooth. Available December 2009



■ Satellite Radio

Satellite radio allows you to hear your favorite programming virtually anywhere in the continental US with up to 170 channels of digital quality music, sports, talk, and comedy. Your choice of XM® or SIRIUS®.
H621SSC100 (XM Satellite Radio Kit) - Excludes NAVI
H621SSC001 (SIRIUS Satellite Radio Kit) - Standard on WRX with NAVI

Required monthly subscription sold separately after trial period ends. Additional fees, equipment, and taxes may apply. Not available in Hawaii and Alaska.



■ Subwoofer

Big bass sound from a small package. Subwoofer is powered by an integrated amplifier and mounts under driver's seat.
H630SFG000

■ SPT Carbon Fiber Trunk Trim

New! Give your Impreza 4-door that high-tech look with this carbon fiber accent. This trim piece is made from real carbon fiber and has the SPT logo embedded in the clear coat.
J101SFG100
Available November 2009



■ Turbo Heat Shield

The SPT Heat Shield helps to retain heat within the turbocharger helping to maintain turbocharger exhaust gas velocity. The shroud also helps keep heat generated by the turbocharger away from the intercooler.
E771SFG500

■ SPT Oil Cap & Battery Hold Down v2.0

New! Replacement oil cap and battery hold down are manufactured from billet aluminum, anodized in Steel Gray or SPT Blue and laser etched with SPT logos.
SOA3881240 (Oil Cap-Gray)
SOA3881220 (Battery Hold Down-Gray)
SOA3881230 (Oil Cap-Blue)
SOA3881210 (Battery Hold Down-Blue)



■ Anti-Slip Mat (not shown)

Provides a slip resistant covering for rear cargo area trays, bins and carpeted surfaces.
J5010LS040



■ Severe Weather Companion

The severe weather kit contains just about everything needed to handle an unexpected weather emergency while traveling. Included are items which help provide the basic necessities such as warmth, light, water, first aid, and the ability to signal for help; all packaged in a handy padded canvas carrying case.
SOA868V9500

■ Cargo Organizer

Conveniently transports your outdoor gear or up to four grocery bags. Quickly collapses for easy storage when not in use.
SOA567T100



SUBARU

Subaru of America reserves the right to change or withdraw accessories at any time without prior notice and without incurring the obligation to make changes to any accessories previously sold. All images are representative.



Subaru, Impreza, WRX, STI and SPT are registered trademarks. Bluetooth is a trademark of Bluetooth SIG. BlueConnect and HomeLink are trademarks of Johnson Controls, Inc. iPod is a trademark of Apple, Inc. SIRIUS is a trademark of SIRIUS XM Radio, Inc. XM is a trademark of XM Satellite Radio, Inc. MOMO is a trademark of MOMO S.p.A. Corp.

©2009 Subaru of America, Inc. Printed in U.S.A. MSA6A0906