



HYUNDAI

NEW THINKING.
NEW POSSIBILITIES.™

Veloster ²⁰¹⁴



CHALLENGE EVERYTHING.

CHALLENGE. IT'S IN OUR DNA, AND IT'S EXACTLY WHY HYUNDAI HAS BECOME A LEADER IN THE AUTOMOTIVE INDUSTRY. WE BELIEVE THAT BEING A LEADER MEANS VENTURING AWAY FROM THE MAINSTREAM AND CHALLENGING CONVENTION. THIS ATTITUDE IS THE DRIVING FORCE THAT HAS LED US TO MANUFACTURE OUR OWN STEEL, DESIGN VEHICLES WITH FLUIDIC SCULPTURE, AND MOVE MORE FEATURES FROM THE OPTIONAL LIST TO THE STANDARD LIST ON ALL OUR VEHICLES. WE CHALLENGE OURSELVES. WE CHALLENGE PHYSICS. WE CHALLENGE THE STATUS QUO. AT HYUNDAI, WE CHALLENGE EVERYTHING, AND IT'S THIS THINKING, A **NEW KIND OF THINKING** THAT LEADS TO **NEW POSSIBILITIES** FOR YOU.

Visit hyundaicanada.com



Turbo model shown.

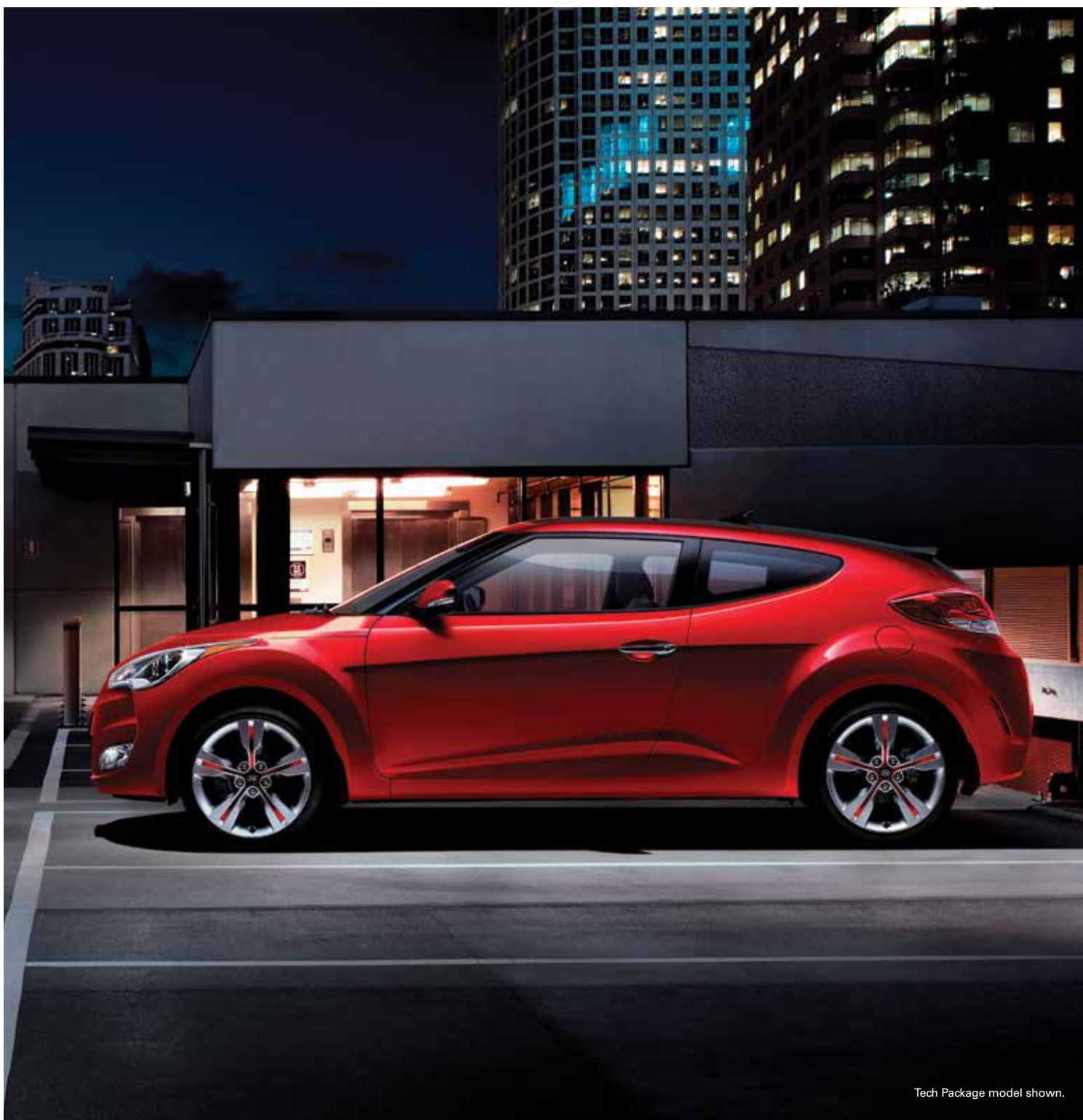


AUTOMOBILE JOURNALISTS
ASSOCIATION OF CANADA

CHALLENGE CONVENTION

The 2014 Veloster continues to exceed expectations and redefine one of the most exciting categories in the market. Since winning AJAC's 2012 Best New Design[▲] award, it continues to be strikingly different than any other vehicle on the road. But what really sets the Veloster apart is innovation. A third door for easy rear seat access, a 7-inch touch-screen multi-media display, and available wheel colour inserts to match the exterior colour. Stand out for all the right reasons.

[▲]2012 Veloster with Tech Package winner of AJAC 2012 Best New Design.



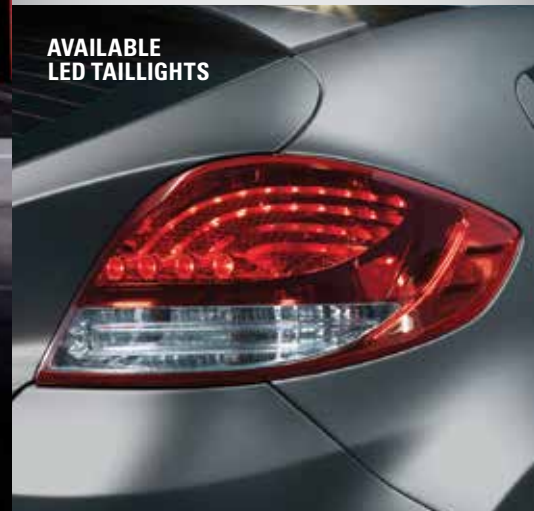
**AVAILABLE PROJECTOR HEADLIGHTS
WITH LED ACCENTS**



**UNIQUE
3-DOOR
DESIGN**



**AVAILABLE
LED TAILLIGHTS**



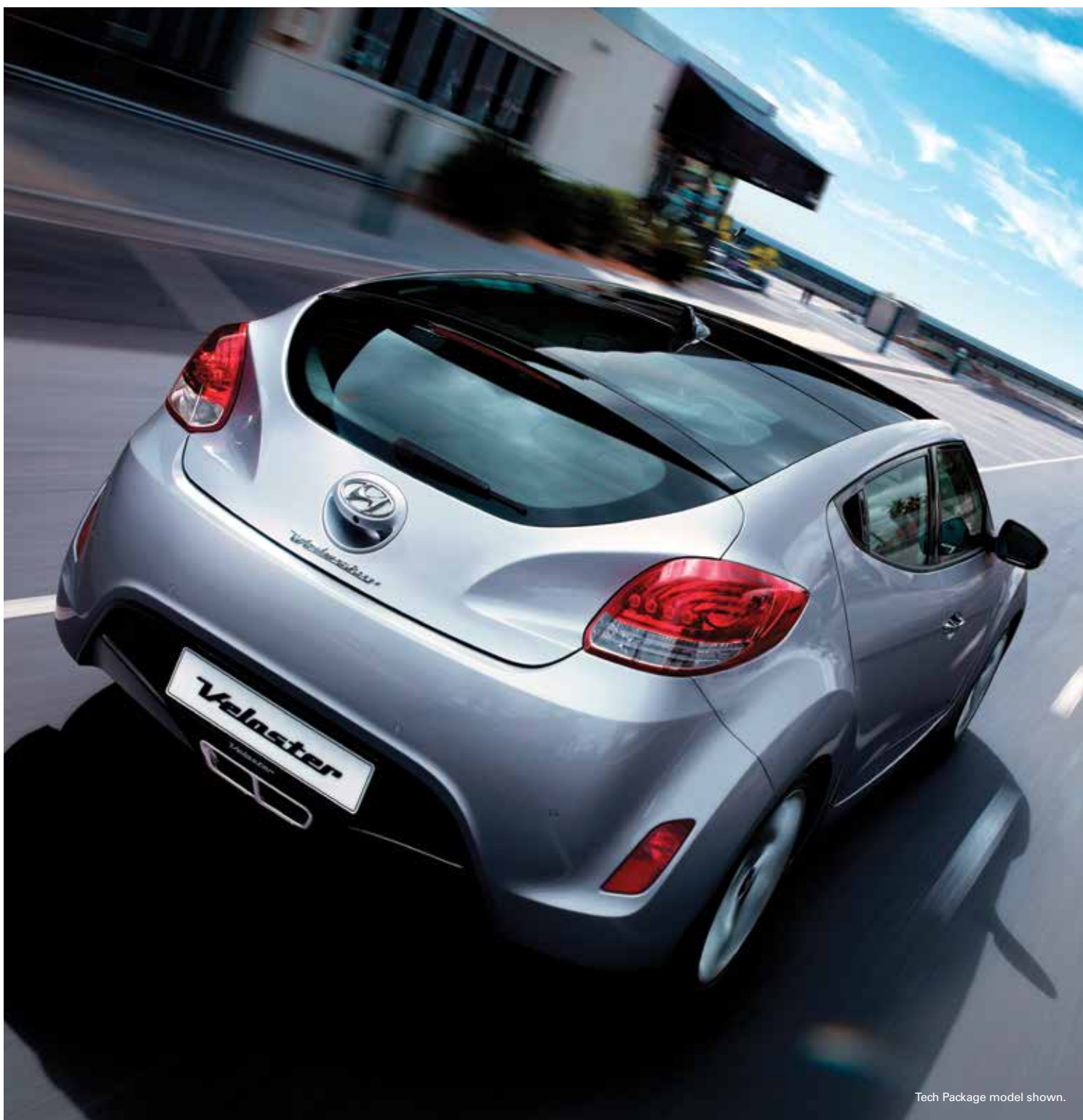
Tech Package model shown.

3 DOORS **1 SIGNATURE LOOK**

More than just a talking piece, the third door makes getting in and out of the rear seat easy and hassle free. The unique look starts with the Hyundai design principle, Fluidic Sculpture, and takes inspiration from a high-performance sport bike. This creates stunning features such as the muscular wheel arches, hood scoop detailing, body colour door handles and mirrors, wraparound taillights and headlights, distinctive rear glass hatch and the ultra cool dual centred chrome exhaust tips. This all works to make the Veloster unmistakable and unforgettable.



Turbo model shown.



Tech Package model shown.



HEATED FRONT SEATS



PROXIMITY KEY WITH PUSH-BUTTON START



AVAILABLE BLUE OR LIGHT GREY INTERIOR ACCENTS

INTERIOR UTOPIA

By connecting people to their video and music, inside is all about you. The 7-inch touch-screen is the media hub of the Veloster. Jump in and your smart phone automatically syncs with Bluetooth® so you can stream music, download your phonebook and take hands-free calls. Use it to help see what's behind you with the rearview camera, depend on it for navigation (standard on Tech Package and Turbo models), and enjoy it to look at uploaded pictures and play videos. For music, the possibilities are endless. Select playlists from your phone, stream SiriusXM™ Satellite Radio or use the iPod®/USB/Aux. inputs. Gracenote® music ID management displays album art, and has voice recognition that allows you to choose your music by artist, album or genre when using your iPod® or iPhone®. It's all the media you could ever want and need.



Not exactly as shown.

EFFICIENCY NEVER LOOKED SO GOOD

The Veloster was designed to deliver an exciting drive with an impressive level of efficiency – and it starts under the hood with the Gamma 1.6L 4-cylinder engine with Gasoline Direct Injection (GDI). The Veloster also boasts the first Hyundai EcoShift Dual Clutch Transmission (DCT). It takes the benefits of a manual transmission, like low fuel consumption, and blends them with automatic transmission benefits, such as a comfortable ride and smooth shifts. For more power, step up to the Veloster Turbo model. The 1.6L Twin-scroll Turbocharged, Gasoline Direct Injection (GDI) engine delivers 201 hp, leaving no doubt the Veloster Turbo is a sports car to its core.



Turbo model shown.



AVAILABLE PADDLE SHIFTERS



6 AIRBAGS¹



REARVIEW CAMERA

DRIVE WITH CONFIDENCE

The Veloster is equipped with an uncompromising level of standard safety features, including six airbags¹, high tensile strength steel and a sophisticated Vehicle Stability Management system (VSM). The VSM system controls the Electronic Stability Control, Traction Control System², and 4-wheel disc, Anti-lock Braking System, all standard features, to help optimize vehicle stability in adverse driving conditions. With all these features and more, you can drive your Veloster with confidence.



VELOSTER FEATURES



DUAL CENTRE EXHAUST.

Nothing says sporty like a dual centre exhaust. Reserved for some of the world's finest supercars, it comes standard on the Veloster. The Veloster Turbo gets its own distinct look with larger, circular outlets.



PANORAMIC SUNROOF.

Let the sun shine in with the available panoramic sunroof. It features a fixed glass roof section at back and a traditional pop-up/slide section at front, with UV blocking all over (standard on Tech Package and Turbo models).



THIRD DOOR.

The hidden rear door on the passenger side gives easy access to the rear seat. With no visible door handle, it maintains the sleek body lines of the Veloster. Nice touch.



HEATED STEERING WHEEL.

A new feature for 2014, drive comfortably and warm up cold hands with the available leather-wrapped heated steering wheel.



7" TOUCH-SCREEN WITH REARVIEW CAMERA AND BLUETOOTH®.

The standard 7" high resolution touch-screen LCD system helps maneuver the Veloster while in reverse using the standard rearview camera. It can also help you make hands-free calls with the standard Bluetooth® Hands-free Phone System, or find your way using the available navigation system (standard on Tech Package and Turbo models).



AIRBAG PROTECTION ALL AROUND.

Every Veloster is equipped with six airbags¹, including dual front airbags, dual front seat-mounted side-impact airbags, and two roof-mounted side-curtain airbags for front and rear passengers. It's got you covered.



ADVANCED ENGINE TECHNOLOGY.

The standard 1.6L engine uses advanced Gasoline Direct Injection (GDI) engine technology that improves fuel efficiency. The Veloster Turbo uses the same GDI technology as the Veloster, combined with a twin-scroll turbo to give it 201 horsepower and an excellent weight-to-horsepower ratio. The twin-scroll turbo system minimizes turbocharger lag while maximizing combustion efficiency and power output. So when the turbo kicks in, you know it.



PROJECTOR HEADLIGHTS WITH LED ACCENTS.

With available projector headlights, an all-new feature for the Tech Package model, the Veloster emits a strong, focused beam of light that greatly increases night-time visibility. It does so in style with the available LED accents. The advanced lighting technology is also incorporated into the available wraparound LED taillights (standard on Tech Package and Turbo Models).



ALLOYS WITH PAINTED INSERTS.

The Veloster comes standard with 17" alloy wheels and available 18" 5-spoke alloys with painted inserts. The Veloster Turbo gives you 18" 5-spoke alloys with chrome accents to give your ride an exclusive look.



Turbo model shown.

THERE'S NO SUBSTITUTE FOR PEACE OF MIND.

The quality of our vehicles is equally matched by the quality of our warranty. Rest assured, we stand proudly and confidently behind our vehicles to give you the ultimate peace of mind with a 5 year/100,000km comprehensive limited warranty, one of the best backed warranties in Canada. We also provide a 3 year/Unlimited km Roadside Assistance Program^{††} featuring flat tire changing, lockout service and more. Just one toll-free call away, 24 hours a day. You're covered with Hyundai.

**5 YEAR
WARRANTY**

100,000 KM
COMPREHENSIVE LIMITED WARRANTY

5-YEAR/100,000 KM
Comprehensive Limited Warranty[†]


5-YEAR/100,000 KM
Powertrain Warranty


5-YEAR/100,000 KM
Emission Warranty

3-YEAR/UNLIMITED KM
Roadside Assistance Program^{††}



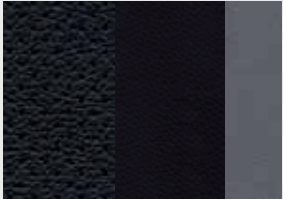
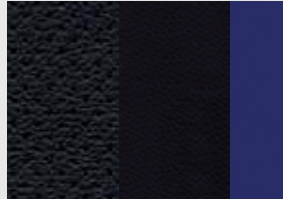
VELOSTER COLOURS

EXTERIOR

RIM*	BODY	BODY	BODY	BODY	
					
	ULTRA BLACK	AB TRIATHLON GREY	AB IRONMAN SILVER	AB CENTURY WHITE	
BODY	RIM*	BODY	RIM*	BODY	RIM*
					
BOSTON RED	AB	VITAMIN C	AB	MARATHON BLUE	AB

VELOSTER TURBO				
	ULTRA BLACK	C CENTURY WHITE	C BOSTON RED	C VITAMIN C
				
	MARATHON BLUE	C LIGHT GREY PEARL	D MATTE GREY	D

INTERIOR

			
BLACK CLOTH	A	BLACK CLOTH WITH LEATHERETTE BOLSTERS	B
		BLACK LEATHER WITH GREY INSERTS	C
		BLACK LEATHER WITH BLUE INSERTS	D

Lettering denotes available exterior and interior colour combinations.

Choice of interior colour depends upon model and/or exterior colour selection. Due to print production process, the colours shown throughout this brochure may vary slightly from the actual hue. See your dealer for model applications and to view the hyundai colour selector. Visit hyundaicanada.com or see your dealer for details. *Painted inserts are available with Tech package only.

RIMS



Veloster 17" Rim



Veloster with Tech Package 18" Rim



Veloster Turbo 18" Rim

VELOSTER ACCESSORIES

BLOCK HEATER.

Engineered for your Hyundai, a block heater will help ensure fast starts and reduce engine wear in extreme weather.



MUD GUARD KIT.

Custom-fit mud guards help keep the dirt and debris of everyday driving where it belongs.



CARGO TRAY.

Add years to the interior of your Hyundai by protecting it from spills and messy loads with a durable, custom-fit cargo tray.



PLASTIC HOOD PROTECTOR.

Help prevent dents and scratches caused by road and vehicle debris with an attractive plastic hood protector.



STEEL WHEELS.

Mount your winter tires on a set of Hyundai steel wheels and spare your alloy wheels from the corrosion caused by salt and slush.



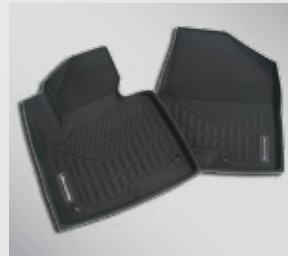
SIDE VISORS.

Complement your vehicle with a sleek and durable set of side visors that will help reduce glare while providing you with fresh air. Custom made for your vehicle using high quality reinforced tinted acrylic plastic, these visors will look good on your vehicle for years to come.



PERFORMANCE AXLE BACK EXHAUST.

Add a deeper exhaust tone to your Hyundai with this high flow axle-back exhaust system. Designed as a bolt on application which requires no cutting, this exhaust system will look and sound great for years to come.



PREMIUM ALL WEATHER FLOOR LINERS.

Premium all weather floor liners were designed to cover the interior carpet providing maximum protection against the elements that other mats cannot offer. Their unique and durable design features a non-slip surface for added comfort and a long lasting premium look. Remove carpet mats prior to installation.



FRONT STRUT BAR.

Increase the handling characteristics of your Hyundai with this attractive front strut bar. Made of polished billet aluminum for strength, durability and style, this strut bar will add some "Bling" to your engine compartment.



REAR BUMPER PROTECTOR.

Help protect the finish on your bumper from chips and scratches, when loading and unloading the cargo area, with this durable, custom-fit rear bumper protector.

VELOSTER SPECIFICATIONS

Veloster

Standard Equipment Includes:

138 hp* 1.6L GDI 16-valve DOHC 4-cylinder Engine with Dual Continuously Variable Valve Timing (Dual-CVVT) ▪ 2-step Variable Induction System ▪ 17" Alloy Wheels ▪ 6-speed Manual Transmission ▪ Airbags*(6): Dual Front, Front Seat-mounted Side-impact and Roof-mounted Side-curtain Anti-lock Braking System (ABS) with Electronic Brake-force Distribution (EBD) and Brake Assist (BA) ▪ Bluetooth® Hands-free Phone System ▪ Front Fog Lights ▪ 7" Touch-screen ▪ AM/FM/SiriusXM™/CD/MP3 Audio/Multimedia System with 6 Speakers and Rearview Camera ▪ Steering Wheel-mounted Audio and Cruise Controls ▪ iPod®/USB and MP3/RCA Auxiliary Input Jacks ▪ Tinted Glass with Windshield Shade Band ▪ Heated Front Seats ▪ Rear Cupholders ▪ Rear Parking Assist System ▪ Chrome Inside Door Handles ▪ Proximity Key with Push Button Start ▪ Heated and Power Adjustable Outside Mirrors ▪ 6-way Adjustable Driver's Seat with Height Adjuster ▪ Centre Chrome-tipped Dual Exhaust

Optional: 132 hp ▪ 6-speed EcoShift Dual Clutch Transmission with Paddle Shifters

Veloster

WITH TECH PACKAGE

Includes Veloster Standard Equipment Plus:

18" Alloy Wheels with Painted Inserts ▪ Automatic Headlights ▪ Panoramic Sunroof ▪ Heated Steering Wheel ▪ Projector Headlights with LED Accents ▪ Dimension Audio System with 8 Speakers, including External Amp and Subwoofer ▪ Navigation System ▪ Leather-wrapped Steering Wheel and Gear Shift Knob ▪ LED Rear Taillights ▪ Mirror-mounted Turn Signal Indicators ▪ Power Driver Lumbar Support ▪ Alloy Pedals ▪ Cloth Seats with Leatherette Bolsters and Door Armrest ▪ High Gloss Black Interior Accents ▪ 115V Power Outlet

Optional: 6-speed EcoShift Dual Clutch Transmission with Paddle Shifters

Veloster Turbo

Includes Veloster with Tech Package Equipment Plus:

201 hp, 1.6L Turbo GDI 16-valve, DOHC, 4-cylinder Engine with Dual-CVVT ▪ e-Limited Slip Differential ▪ Turbo-unique Black Grille ▪ 18" Alloy Wheels with Chrome Accents ▪ Leather Seating Surfaces ▪ Body-colour Rear Spoiler ▪ Turbo Unique Body-kit

Optional: 6-speed Automatic Transmission with Paddle Shifters

PERFORMANCE

		VELOSTER	VELOSTER with Tech Package	VELOSTER Turbo
Engine	1.6L GDI, 4-Cylinder, DOHC	S	S	–
	1.6L Twincscroll, Turbocharged, GDI, 4-cylinder DOHC	–	–	S
	Displacement	S	S	S
	Bore & Stroke (mm)	S	S	S
	Compression Ratio	S	S	–
		9.5	–	S
	Horsepower @ RPM	S	S	–
		138 @ 6,300	–	S
		201 @ 6,000	–	S
	Horsepower @ RPM – DCT	S	S	–
	Torque (lb-ft) @ RPM	S	S	–
		123 @ 4,850	0	0
		195 @ 1,750	–	S
		120 @ 4,850	0	0
Torque (lb-ft) @ RPM – DCT	S	S	S	
Valve Train	S	S	S	
2-step Variable Induction System	S	S	–	
1-step Tuned Intake System	–	–	S	
Fuel Delivery System	Gasoline Direct Injection (GDI)	S	S	S
Block/Head Composition	Aluminum	S	S	S
Exhaust	Centre Chrome Tipped Twin Outlets	S	S	S
Emissions System	ULEV	S	S	S
Alternator	13.5V 90A	S	S	–
	13.5V 110A	–	–	S
Drive Configuration	FWD	S	S	S
Transmission Type	6-speed Manual	S	S	S
	6-speed EcoShift Dual Clutch (DCT) with SHIFTRONIC® Manual Shift Mode and Paddle Shifters	0	0	–
	6-speed Automatic with SHIFTRONIC® Manual Shift Mode and Paddle Shifters	–	–	0
Brakes	Front: Ventilated Disc (280mm)	S	S	–
	Front: Ventilated Disc (300mm)	–	–	S
	Rear: Solid Disc (262mm)	S	S	S
Miscellaneous Features	Chassis	Unibody	S	S
	Materials	High Tensile Steel	S	S
Steering	Rack-and-pinion Type Motor Driven Power Steering (MDPS)	S	S	S
	Overall Ratio	S	S	S
	Turning Diameter (curb-to-curb, in m)	S	S	S
	Turns (lock to lock)	S	S	S
Suspension	Front: MacPherson Struts with Coil Springs, Stabilizer Bar (24mm) and Gas Shock Absorbers (Twin Tube)	S	S	S
	Rear: Torsion Beam Axle with Coil Springs, V-Beam – Integrated Stabilizer Bar (23mm) and Gas Shock Absorbers (Mono Tube)	S	S	S
Tires	P215/45R17	S	–	–
	P215/40R18	–	S	S
Wheels	17 x 7.0J Aluminum Alloy	S	–	–
	18 x 7.5J Aluminum Alloy with Painted Inserts	–	S	–
	18 x 7.5J Aluminum Alloy with Chrome Accents	–	–	S

S = Standard
0 = Optional
– = Not Available

		VELOSTER	VELOSTER with Tech Package	VELOSTER Turbo
EXTERIOR				
Glass	Front Windshield Sunshade Band	S	S	S
Lighting	Automatic Headlights	-	S	S
	Fog Lights	S	S	S
	LED Centre High Mount Stop Lamp (CHMSL)	S	S	S
	Projector Headlights with LED Accents	-	S	S
	Rear LED Taillights	-	S	S
Miscellaneous Features	Rearview Camera	S	S	S
	Rear Parking Assist System	S	S	S
	Roof-mounted SiriusXM™ Antenna	S	S	S
Moulding and Trim	Black Front Grille with Chrome Insert	S	S	-
	Turbo-unique Front Grille	-	-	-
	Glossy Black Rear Lip Spoiler with LED HMSL	S	S	-
	Body-colour Rear Spoiler with LED HMSL	-	-	S
Outside Mirrors	Power Adjustable, Body-colour, Heated Mounted Turn Signal Indicators	S	S	S
		-	S	S
Sunroof	Panoramic	-	S	S

INTERIOR

Air Conditioning	Manual Temperature Control	S	S	S
Audio	196-Watt AM/FM/SiriusXM™/CD/MP3 Audio System with 6 Speakers	S	-	-
	450-Watt AM/FM/SiriusXM™/CD/MP3 Dimension Premium Audio System with 8 Speakers Including a Subwoofer and External Amplifier	-	S	S
	7" High-resolution Touch-screen	S	S	S
	iPod®/USB/Auxiliary Input Jacks	S	S	S
Console	Front Centre with Dual Cupholders, Fixed Armrest and Storage Box (2 tier)	S	S	S
Interior Accents	Metal Paint	S	S	S
	High Glossy Black	-	S	S
Front Seats	6-way Adjustable Driver's Seat with Adjustable Head Restraint	S	S	S
	4-way Adjustable Passenger's Seat with Adjustable Head Restraint	S	S	S
	Power Driver Lumbar Support	-	S	S
	Heated Seats	S	S	S
Miscellaneous Features	Alloy Pedals	-	S	S
	Leather-wrapped Gear Shift Knob	-	S	S
	Outside Temperature Display	S	S	S
	Proximity Key with Push-button Start and Alarm	S	S	S
Mirrors	Illuminated Driver and Front Passenger Vanity	S	S	S
	Manual Day/Night Rearview Mirror	S	S	S
Navigation System		-	S	S
Power Windows	Driver's Auto-up/Down with Pinch Protection	S	S	S
Rear Seats	Split Folding (60/40) with Adjustable Head Restraints Cupholders and Storage Tray	S	S	S
Seat Trim	Premium Cloth	S	-	-
	Cloth Insert with Leatherette Bolsters	-	S	-
	Leather Seating Surfaces with Turbo Stitching on Front Seatback	-	-	S
Steering Wheel	Heated and Leather-wrapped	-	S	S
	Tilt and Telescopic	S	S	S
	Mounted Audio and Cruise Controls	S	S	S
	Bluetooth® Hands-free Phone System with Voice Recognition	S	S	S
		S	S	S

SAFETY

		VELOSTER	VELOSTER with Tech Package	VELOSTER Turbo
Airbags¹	Driver and Front Passenger (2)	S	S	S
	Driver and Front Passenger Side-impact (2)	S	S	S
	Roof-mounted Side-curtain (2)	S	S	S
Brakes	Anti-lock Braking System (ABS) and Electronic Brake-force Distribution (EBD) Brake Assist (BA)	S	S	S
Child Safety	Child-proof Rear Door Lock (passenger side) Rear Child Seat LATCH System	S	S	S
Miscellaneous Features	Vehicle Stability Management (VSM)	S	S	S
	Electronic Stability Control (ESC) with Traction Control System (TCS)²	S	S	S
	e-Limited Slip Differential	-	-	S
Restraint Systems	Front: 3-point Seatbelt	S	S	S
	Rear: 3-point Seatbelt (2)	S	S	S
	Adjustable Front and Rear Head Restraints	S	S	S

DIMENSIONS

Exterior Dimensions (mm)	Wheelbase	2,650	S	S	S
	Overall Length	4,220	S	S	-
		4,250	-	-	S
	Overall Height	1,399	S	S	S
		1,790	S	S	-
	Width (excluding mirrors)	1,805	-	-	S
		143	S	S	S
		0.32	S	S	-
	Minimum Ground Clearance	0.33	-	-	S
		830/740	S	S	-
Coefficient of Drag	850/750	-	-	S	
Interior Dimension (mm) Front/Rear	Head Room	990/896	S	-	-
	Head Room (with Panoramic Sunroof)	945/896	-	S	S
	Leg Room	1,114/805	S	S	S
	Shoulder Room	1,412/1,371	S	S	S
	Hip Room	1,351/1,337	S	S	S
Track (mm) Front/Rear	17" Wheels	1,561/1,574	S	-	-
	18" Wheels	1,557/1,570	-	S	S
Volume (L)	Passenger Compartment	2,543	S	S	S
	Cargo (Trunk)	440	S	S	S
	Total	2,983	S	S	S
Curb Weight (kg)	M/T	1,172 – 1,243	S	S	-
		1,270 – 1,323	-	-	S
		1,205 – 1,276	0	0	-
	DCT	1,310 – 1,363	-	-	0
		1,700	S	S	-
		1,750	-	-	S

FUEL ECONOMY^ (LITRES/100KM)

6-speed Manual Transmission – City/Highway/Combined	7.8 / 5.6 / 6.8	S	S	-
	8.4 / 5.9 / 7.3	-	-	S
EcoShift DCT or Automatic Transmission – City/Highway/Combined	7.4 / 5.5 / 6.5	S	S	-
	8.6 / 6.3 / 7.6	-	-	S
Fuel Tank (L)	50	S	S	S



hyundaicanada.com/veloster
hyundaicanada.com/veloster-turbo

[™]The Hyundai name, logos, product names, feature names, images and slogans are trademarks owned by Hyundai Auto Canada Corp. Specifications, features, illustrations, accessories, materials and equipment and all other information shown in this brochure are based on the latest information available at the time of publication. Although descriptions are believed to be correct, accuracy cannot be guaranteed. Hyundai Auto Canada Corp. reserves the right to make any changes or modifications at any time, without notice or obligation, including, without limitation, in colour, specifications, features, accessories, materials, equipment and models. Some vehicles are shown with optional equipment. All Hyundai warranties have no deductible. ⁴Fuel economy figures are based on manufacturer's testing and are used for comparison purposes only. Actual fuel efficiency may vary based on driving conditions and the addition of certain vehicle accessories. ¹Hyundai's Comprehensive Limited Warranty coverage covers most vehicle components against defects in workmanship under normal use and maintenance conditions. ¹¹Hyundai's 24-Hour Roadside Assistance Program is a limited service and does not cover certain costs or expenses. Roadside Assistance is not a warranty. ¹The Supplemental Restraint (Airbag) System (SRS) is designed to work with the 3-point seatbelt system. The SRS deploys in certain frontal and/or side-impact conditions where significant injury is likely. The SRS is not a substitute for seatbelts, which must still be worn at all times. Children under the age of 13 should be securely restrained in the rear seat. NEVER place a child-seat in the front seat of a Hyundai vehicle. ²Electronic Stability Control (ESC) and Traction Control System (TCS) are meant to enhance conscientious driving habits and are not a substitute for safe driving practices. ESC cannot control your vehicle's stability under all driving situations. No system, no matter how advanced, can overcome physics or correct poor driving. Speed, road conditions and driver steering input will affect whether ESC can help prevent loss of control. See Owner's Manual for details. Bluetooth® word mark and logos are registered trademarks owned by Bluetooth SIG, Inc., and any use of such marks by Hyundai is under license. The SiriusXM™ name is a registered trademark of SiriusXM Satellite Radio Inc., iPod® and iPhone® are registered trademarks of Apple, Inc. Other trademarks and trade names are those of their respective owners. ^{*}When mated to the Ecoshift DCT, the peak horsepower decreases to 132hp and torque decreases to 120 lb-ft.



www.facebook.com/hyundaicanada
www.youtube.com/hyundaicanada