

2018 Yaris



Nothing beats the style and simplicity of the new 2018 Yaris.

Simple, straightforward and safe. The recently refreshed 2018 Toyota Yaris is all about character — with upgraded style and features you'll enjoy using every day. Luckily, Yaris already comes standard with Entune™ Audio, which includes a 6.1-in. touch-screen display, *Bluetooth*®⁹ and a backup camera.¹⁴ These features make getting from point A to point B comfortable and convenient. Since safety and reliability reign supreme, you'll be pleased to know that Toyota Safety Sense™ C (TSS-C)¹⁷ comes standard. If leading by example is your thing, Yaris is your chance to demonstrate how pure and practical can also be sporty and stylish.

5-Door SE shown in Blue Eclipse Metallic. Prototype shown. Production model may vary. See numbered footnotes in Disclosures section.



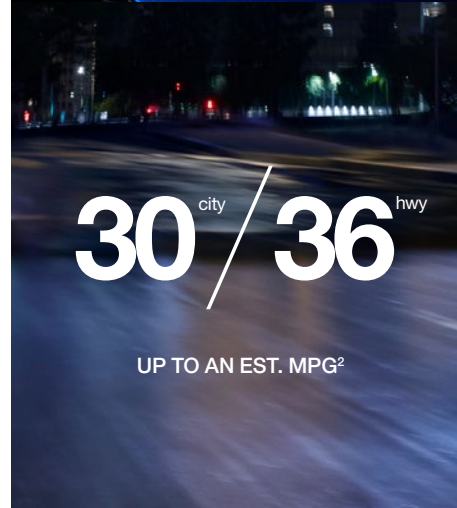
AVAILABLE 16-IN. MACHINED ALLOY WHEEL

The available 16-in. wheels on Yaris feature sleek dark accents. These wheels add to the car's fresh, new look and help you get to where you're headed safely, with style.



LED DRL ACCENT LIGHT BAR

Available LED Daytime Running Lights (DRL) feature an accent light bar to brighten things up a bit. Just another stylish feature on Yaris that adds to its sporty and unique personality.



30^{city} / 36^{hwy}

UP TO AN EST. MPG²

PREMIUM DESIGN



5-Door SE shown in Blue Eclipse Metallic and 5-Door LE shown in Ruby Flare Pearl.²⁸ Prototypes shown. Production models may vary. See numbered footnotes in Disclosures section.

More tech features. Less fluff.

Features you need. None that you don't. That's because the stylishly straightforward 2018 Yaris prides itself on its simplicity and practicality — ensuring that every recently upgraded feature is enjoyable and intuitive. This is tech that has you in mind, like standard Entune™ Audio and hands-free phone capability with music streaming⁸ via *Bluetooth*®. The standard integrated backup camera¹⁴ just may become your favorite feature, helping you to get in and out of tight spots. You'll wonder how you ever lived without all this helpful technology.



STANDARD ENTUNE™ AUDIO 6.1-IN. TOUCH-SCREEN W/USB⁵ AND BLUETOOTH® CONNECTIVITY

The standard Entune™ Audio 6.1-in. touch-screen display with USB 2.0 port and *Bluetooth*® connectivity, including advanced voice recognition⁷, will guide you along your ride and help get you to where you're going more conveniently.



HANDS-FREE PHONE CAPABILITY WITH MUSIC STREAMING⁸ VIA BLUETOOTH®

Standard integrated *Bluetooth*® technology with music streaming lets you take and make calls, and enjoy your favorite music, without you ever touching your phone or missing a beat.



STANDARD BACKUP CAMERA¹⁴

When you're in reverse, the standard integrated backup camera offers you a helpful view of what the camera detects from behind. An additional touch of visibility to help make your journey forward a safe one.



AVAILABLE CONNECTED NAVIGATION¹¹

The available Entune™ Audio Plus with Connected Navigation App helps you find your way from A to B much more conveniently. It comes equipped with the Scout® GPS Link App,¹¹ allowing you to pair your smartphone for turn-by-turn directions.

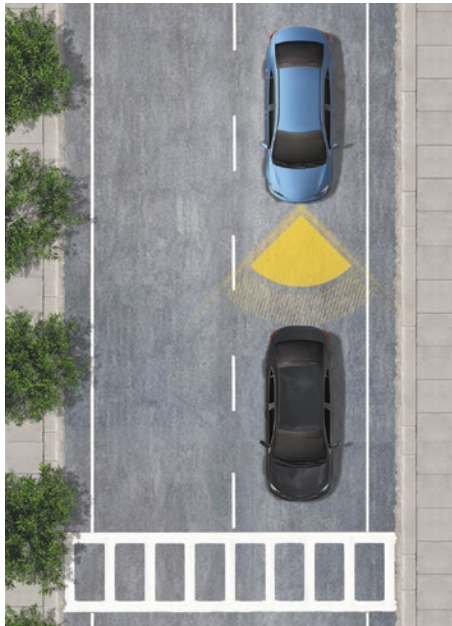
Redesigned from the inside out.

A roomy interior filled with lots and lots of extras. The kind of extras you want, like available remote keyless entry, so that just a press of the button gets you in and out of Yaris. Plus, easy-reach cup holders and door pockets, where you can stash your stuff. A generous center storage cubby helps you keep it all in check.



Designed for safety.

Toyota Safety Sense™ (TSS)¹⁷ is a bundle of active safety features on most new Toyota vehicles at no additional cost. These innovative features were designed to help protect you and your passengers from harm.



PRE-COLLISION SYSTEM (PCS)¹⁸

Using an integrated camera and laser or radar to help detect other vehicles in front of you, the Pre-Collision System (PCS) can prompt you to take action using audio and visual alerts if it determines a frontal collision is likely. If you notice the potential collision and apply the brakes, PCS may apply additional force using Brake Assist (BA).²² If you don't brake in time, PCS may automatically apply the brakes for you, helping to minimize the likelihood of a frontal collision or reduce its severity.



LANE DEPARTURE ALERT (LDA)¹⁹

Under certain circumstances, Lane Departure Alert (LDA) is designed to detect lane departure on roads with clear markings. LDA only activates when you're traveling at a speed of 32 mph or faster. When you hear and see the alert, after carefully checking the road around you, you should safely direct your vehicle back to the center of your lane.



AUTOMATIC HIGH BEAMS (AHB)²⁰

Automatic High Beams (AHB) are a safety system designed to help you see more clearly at night — without blinding other drivers. Designed to activate at speeds above 25 mph, AHB rely on an in-vehicle camera to help detect the headlights of oncoming vehicles and taillights of preceding vehicles, then automatically toggle between high and low beams accordingly to provide the appropriate amount of light. By using high beams more frequently, the system may allow earlier detection of pedestrians and obstacles.

TOYOTA SAFETY SENSE™ C (TSS-C)



5-Door SE shown in Blue Eclipse Metallic. Prototype shown. Production model may vary.

STYLISH INTERIOR

Practical performance meets sporty style.

Performance-inspired touches you'll appreciate all around you. For twisty roads, the available leather-trimmed steering wheel and shift lever add to the adventure while available sport fabric-trimmed seats enhance your comfort and enjoyment. Available metallic interior trim accents with satin chrome interior door handles mean business. It's clear that Yaris really does have you in mind, offering all that's smart and savvy in one practical package.

5-Door SE interior shown in Black. Prototype shown. Production model may vary.

Smaller in size. Bigger on safety.

Zippering in and out of the city is a breeze in Yaris, but sometimes the unexpected can happen. That's why we've loaded Yaris with so many safety features, like nine standard airbags,²⁴ to help keep you from harm. With the Star Safety System™ — a suite of six active safety features — plus ToyotaCare,²⁹ which offers two years or 25,000 miles of TLC for your new or leased Toyota, you'll soon discover that no matter the size of Yaris, you matter.



NINE AIRBAGS²⁴

Yaris has nine airbags, which include a driver and front passenger Advanced Airbag System, driver and front passenger seat-mounted side airbags, a driver knee airbag, driver and front passenger seat-cushion airbags, and front and rear side curtain airbags.



STAR SAFETY SYSTEM™

Travel safely with more peace of mind. Yaris comes standard with this suite of six advanced safety features designed to help keep you out of harm's way. The system includes Vehicle Stability Control (VSC);²¹ Traction Control (TRAC), Anti-lock Brake System (ABS), Electronic Brake-force Distribution (EBD), Brake Assist (BA)²² and Smart Stop Technology® (SST);²³



TOYOTACARE²⁹

Find new adventures without worry. Toyota is devoted to safety and dependability, and proper vehicle maintenance is important to both. That's why we include a no cost maintenance plan with the purchase or lease of every new Yaris for 2 years or 25,000 miles, whichever comes first. 24-hour roadside assistance³⁰ is also included for 2 years and unlimited miles.



5-Door LE shown in Ruby Flare Pearl.²⁸ Prototype shown. Production model may vary.

See numbered footnotes in Disclosures section.

YARIS MODELS



L

Available in 3- or 5-door models

Powertrain

- 1.5L 4-Cyl. Engine
- 5-speed manual or available 4-speed automatic transmission
- 30 city/36 hwy/33 combined EPA-est. mpg² (manual)
- 30 city/35 hwy/32 combined EPA-est. mpg² (automatic)

Exterior Features

- Bold front fascia with grille and chrome accents
- Multi-reflector halogen headlights with chrome accents
- Daytime Running Lights (DRL)
- Color-keyed outside mirrors
- 15-in. styled steel wheels

Interior Features

- Entune™ Audio — includes Entune™ Multimedia Bundle⁴ (6.1-in. touch-screen display, AM/FM CD player, MP3/WMA playback capability, six speakers, auxiliary audio jack, USB 2.0 port⁵ with iPod^{®6} connectivity and control, advanced voice recognition,⁷ hands-free phone capability, phone book access and music streaming⁸ via Bluetooth^{®9} wireless technology), and Siri[®] Eyes Free¹⁰
- Integrated backup camera¹⁴ display with projected path
- Fabric-trimmed front seats
- 6-way adjustable driver's seat
- 4-way adjustable front passenger seat with seatback pocket
- 60/40 split fold-down rear seats
- Tilt 3-spoke steering wheel with audio controls
- Power door locks with illuminated entry
- Power windows with driver-side auto down
- Passenger-side glove compartment
- 12V auxiliary power outlet
- Cargo area tonneau cover

Safety Features

- Toyota Safety Sense™ C (TSS-C)¹⁷ — includes Pre-Collision System (PCS);¹⁸ Lane Departure Alert (LDA)¹⁹ and Automatic High Beams (AHB)²⁰
- Star Safety System™ and nine airbags²⁴



LE

Available in 3- or 5-door models

Adds to or replaces features offered on L

Powertrain

- 1.5L 4-Cyl. Engine
- 4-speed automatic transmission
- 30 city/35 hwy/32 combined EPA-est. mpg²

Exterior Features

- Color-keyed power outside mirrors
- 15-in. machined alloy wheels

Interior Features

- Cruise control
- Remote keyless entry system
- Metallic interior trim accents with satin chrome handles

Safety Features

- Engine immobilizer²⁷



SE

5-door model only

Adds to or replaces features offered on LE

Powertrain

- 1.5L 4-Cyl. Engine
- 5-speed manual or available 4-speed automatic transmission
- 30 city/36 hwy/33 combined EPA-est. mpg² (manual)
- 30 city/35 hwy/32 combined EPA-est. mpg² (automatic)

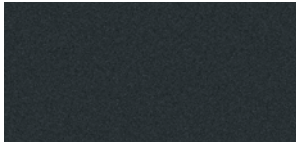
Exterior Features

- Projector-beam headlights with black sport trim and LED light bar accent
- LED Daytime Running Lights (DRL)
- Integrated fog lights with chrome surround
- Sporty front fascia with piano-black mesh pattern grille and chrome accent
- Rear spoiler
- 16-in. machined alloy wheels with dark accents

Interior Features

- Sport fabric-trimmed front seats
- Leather-trimmed tilt 3-spoke steering wheel with audio controls
- Leather-trimmed shift lever
- Entune™ Audio Plus with Connected Navigation App¹¹ — includes 7-in. high-resolution touch-screen display, AM/FM tuner, MP3/WMA playback capability, six speakers, auxiliary audio jack, USB 2.0 port⁵ with iPod^{®6} connectivity and control, advanced voice recognition,⁷ hands-free phone capability, phone book access and music streaming⁸ via Bluetooth^{®9} wireless technology, Connected Navigation Scout[®] GPS Link App¹¹ Siri[®] Eyes Free¹⁰ SiriusXM[®] Satellite Radio¹² with 3-month complimentary SiriusXM All Access trial,³³ Gracenote[®] album cover art, HD Radio™¹³ Technology, HD Radio™ Traffic and Weather in major metro areas

Color



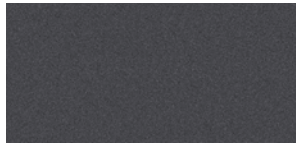
Black Sand Pearl



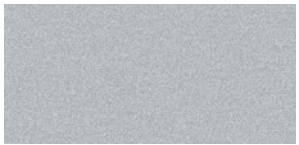
Ruby Flare Pearl²⁸



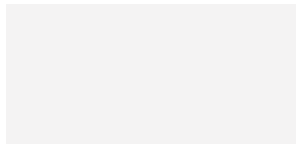
Blue Eclipse Metallic



Magnetic Gray Metallic



Classic Silver Metallic



Super White

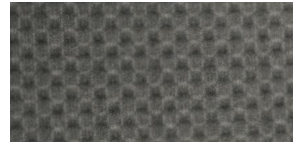


Ruby Flare Pearl/
Black Sand Pearl²⁸



Blue Eclipse Metallic/
Black Sand Pearl²⁸

Trim



L and LE fabric shown in Black



SE fabric shown in Black

Wheels



L 15-in. styled steel wheel



LE 15-in. machined alloy wheel



SE 16-in. machined alloy wheel

ACCESSORIES

A wide range of Genuine Toyota Accessories is available to help make driving your Yaris even more fun. Now your Yaris can reflect your unique style and make you stand out even more. Some accessories may not be available in all regions of the country. For a complete list of accessories, go to toyota.com/Yaris.

All-weather floor liners³¹
Ashtray
Body side moldings
Cargo mat

Cargo net — envelope¹
Cargo tote¹
Cargo tray
Center arm rest

Door edge guards
Emergency assistance kit
First aid kit
Paint protection film³²

Rear bumper protector
Rear mudguards
Rear spoiler
Wheel locks



All-weather floor liners³¹



Body side moldings



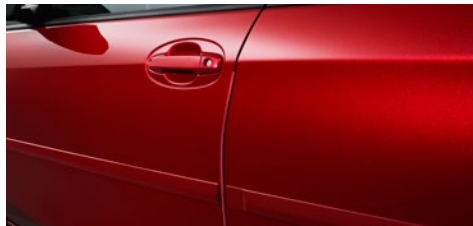
Cargo net — envelope¹



Cargo tote



Cargo tray



Door edge guards



Mudguards

SPECIFICATIONS

MECHANICAL AND PERFORMANCE	3-DOOR L	3-DOOR LE	5-DOOR L	5-DOOR LE	5-DOOR SE
ENGINE					
1.5-Liter 4-Cylinder DOHC 16-Valve Variable Valve Timing with intelligence (VVT-i); 106 hp @ 6000 rpm; 103 lb.-ft. @ 4200 rpm	Standard	Standard	Standard	Standard	Standard
EMISSION RATING					
Ultra Low Emission Vehicle II (ULEV-II)	Standard	Standard	Standard	Standard	Standard
TRANSMISSION					
5-speed manual transmission	Available	NA	NA	NA	Available
4-speed Electronically Controlled automatic Transmission with intelligence (ECT-i)	Available	Standard	Standard	Standard	Available
DRIVETRAIN					
Front-Wheel Drive (FWD)	Standard	Standard	Standard	Standard	Standard
BODY CONSTRUCTION					
Unitized body	Standard	Standard	Standard	Standard	Standard
SUSPENSION					
Independent MacPherson strut front suspension with stabilizer bar; torsion beam rear suspension	Standard	Standard	Standard	Standard	NA
Sport-tuned independent MacPherson strut front suspension with stabilizer bar; torsion beam rear suspension	NA	NA	NA	NA	Standard
STEERING					
Sport-tuned Electric Power Steering (EPS); power-assisted rack-and-pinion	Standard	Standard	Standard	Standard	Standard
Turning circle diameter, curb to curb (ft.)	31.5	31.5	31.5	31.5	36.1
BRAKES					
Power-assisted ventilated front disc brakes; rear drum brakes and Star Safety System™	Standard	Standard	Standard	Standard	NA
Power-assisted ventilated front disc brakes; rear disc brakes and Star Safety System™	NA	NA	NA	NA	Standard
EXTERIOR DIMENSIONS (IN.)					
Overall height	59.4	59.4	59.4	59.4	59.4
Overall width	66.7	66.7	66.7	66.7	66.7
Overall length	155.5	155.5	155.5	155.5	155.5
Wheelbase	98.8	98.8	98.8	98.8	98.8
Track (front/rear)	58.5/57.9	58.5/57.9	58.5/57.9	58.5/57.9	57.5/56.9
Ground clearance	5.5	5.5	5.5	5.5	5.5
INTERIOR DIMENSIONS (FRONT/REAR) (IN.)					
Head room	39.3/37.6	39.3/37.6	39.3/37.6	39.3/37.6	39.3/37.6
Shoulder room	52.5/51.8	52.5/51.8	52.5/51.8	52.5/51.8	52.5/51.8
Hip room	50.0/49.8	50.0/49.8	50.0/50.1	50.0/50.1	50.0/50.1
Leg room	40.6/33.3	40.6/33.3	40.6/33.3	40.6/33.3	40.6/33.3
Seating capacity	5	5	5	5	5
WEIGHTS/CAPACITIES					
Curb weight (lb.) (manual/automatic)	2315/2335	NA/2335	NA/2335	NA/2335	2315/2335
EPA passenger volume (cu. ft.)	84.4	84.4	85.1	85.1	85.1
Cargo volume ¹ (cu. ft.)	15.3	15.3	15.6	15.6	15.6
Fuel tank (gal.)	11.1	11.1	11.1	11.1	11.1
TIRES					
Size — Standard	P175/65R15	P175/65R15	P175/65R15	P175/65R15	P195/50R16
Type — All-season	Standard	Standard	Standard	Standard	Standard
Spare — Temporary	Standard	Standard	Standard	Standard	Standard
MILEAGE ESTIMATES (MPG CITY/HIGHWAY/COMBINED)²					
Manual	30/36/33	NA	NA	NA	30/36/33
Automatic	30/35/32	30/35/32	30/35/32	30/35/32	30/35/32

See numbered footnotes in Disclosures section.

FEATURES³

EXTERIOR	3-DOOR L	3-DOOR LE	5-DOOR L	5-DOOR LE	5-DOOR SE		3-DOOR L	3-DOOR LE	5-DOOR L	5-DOOR LE	5-DOOR SE
Multi-reflector halogen headlights with chrome accents	S	S	S	S	—	Color-keyed outside mirrors	S	—	S	—	—
Projector-beam headlights with black sport trim and LED light bar accent	—	—	—	—	S	Color-keyed power outside mirrors	—	S	—	S	S
Integrated fog lights with chrome surround	—	—	—	—	S	Color-keyed outside door handles	S	S	S	S	S
Daytime Running Lights (DRL)	S	S	S	S	—	15-in. styled steel wheels and P175/65R15 tires	S	—	S	—	—
LED Daytime Running Lights (DRL)	—	—	—	—	S	15-in. machined alloy wheels with P175/65R15 tires	—	S	—	S	—
Bold front fascia with grille and chrome accent	S	S	S	S	—	16-in. machined alloy wheels with dark accents and P195/50R16 tires	—	—	—	—	S
Sporty front fascia with piano-black mesh pattern grille and chrome accent	—	—	—	—	S	Intermittent single-pantograph wet-arm windshield wiper	S	S	S	S	S
Rear spoiler	—	—	—	—	S	Rear window wiper and defogger	S	S	S	S	S
						Roof-mounted antenna	S	S	S	S	S
INTERIOR											
Air conditioning with air filter	S	S	S	S	S	Leather-trimmed shift lever	—	—	—	—	S
Entune™ Audio — includes Entune™ Multimedia Bundle ⁴ (6.1-in. touch-screen display, AM/FM CD player, MP3/WMA playback capability, six speakers, auxiliary audio jack, USB 2.0 port ⁵ with iPod® ⁶ connectivity and control, advanced voice recognition, ⁷ hands-free phone capability, phone book access and music streaming ⁸ via Bluetooth® ⁹ wireless technology), and Siri® Eyes Free ¹⁰	S	S	S	S	—	Sport analog instrumentation with speedometer, tachometer and fuel gauge; LCD display with odometer, tripmeters, clock, outside temperature, current/average fuel economy, distance to empty and average speed; and warning messages	S ¹⁵	—	—	—	S ¹⁵
Entune™ Audio Plus with Connected Navigation App ¹¹ — includes 7-in. high-resolution touch-screen display, AM/FM tuner, MP3/WMA playback capability, six speakers, auxiliary audio jack, USB 2.0 port ⁵ with iPod® ⁶ connectivity and control, advanced voice recognition, ⁷ hands-free phone capability, phone book access and music streaming ⁸ via Bluetooth® ⁹ wireless technology, Connected Navigation Scout® GPS Link App, ¹¹ Siri® Eyes Free, ¹⁰ SiriusXM® Satellite Radio ¹² with 3-month complimentary SiriusXM All Access trial ³³ Gracenote® album cover art, HD Radio™ ¹³ Technology, HD Radio™ Traffic and Weather in major metro areas	—	—	—	—	S	Sport analog instrumentation with speedometer, tachometer and fuel gauge; LCD display with odometer, tripmeters, clock, outside temperature, current/average fuel economy, distance to empty, average speed and shift position; ECO Driving Indicator and warning messages	S ¹⁶	S	S	S	S ¹⁶
Integrated backup camera ¹⁴ display with projected path	S	S	S	S	S	Metallic interior trim accents with satin chrome interior door handles	—	S	—	S	S
Fabric-trimmed front seats; 6-way adjustable driver's seat; 4-way adjustable front passenger seat with seatback pocket	S	S	S	S	—	Remote keyless entry system with lock, unlock and panic functions	—	S	—	S	S
Sport fabric-trimmed front seats; 6-way adjustable driver's seat; 4-way adjustable front passenger seat with seatback pocket	—	—	—	—	S	Power windows with driver-side auto down	S	S	S	S	S
60/40 split fold-down rear seats	S	S	S	S	S	Power door locks with illuminated entry	S	S	S	S	S
Cruise control	—	S	—	S	S	Day/night rearview mirror	S	S	S	S	S
Tilt 3-spoke steering wheel with audio controls	S	S	S	S	—	Front seat maplights	S	S	S	S	S
Leather-trimmed tilt 3-spoke sport steering wheel with audio controls	—	—	—	—	S	Cargo area light	S	S	S	S	S
						Passenger-side glove compartment	S	S	S	S	S
						Two front and one rear cup holders with bottle holders in front doors	S	S	S	S	S
						12V auxiliary power outlet	S	S	S	S	S
						Dual extendable sun visors with vanity mirrors	S	S	S	S	S
						Cargo area tonneau cover	S	S	S	S	S
SAFETY AND CONVENIENCE											
Toyota Safety Sense™ C (TSS-C) ¹⁷ — includes Pre-Collision System (PCS), ¹⁸ Lane Departure Alert (LDA) ¹⁹ and Automatic High Beams (AHB) ²⁰	S	S	S	S	S	Front seatbelt pretensioners with force limiters	S	S	S	S	S
STAR SAFETY SYSTEM Star Safety System™ — includes Vehicle Stability Control (VSC), ²¹ Traction Control (TRAC), Anti-lock Brake System (ABS), Electronic Brake-force Distribution (EBD), Brake Assist (BA) ²² and Smart Stop Technology® (SST) ²³	S	S	S	S	S	LATCH (Lower Anchors and Tethers for Children) includes lower anchors on outboard rear seats and tether anchors on all rear seats	S	S	S	S	S
Nine airbags ²⁴ — includes driver and front passenger Advanced Airbag System, driver and front passenger seat-mounted side airbags, driver knee airbag, driver and front passenger seat-cushion airbags, and front and rear side curtain airbags	S	S	S	S	S	Child-protector rear door locks	—	—	S	S	S
Driver and front passenger Whiplash-Injury-Lessening (WIL) ²⁵ seats	S	S	S	S	S	Energy-absorbing collapsible steering column	S	S	S	S	S
3-point seatbelts for all seating positions; driver-side Emergency Locking Retractor (ELR) and Automatic/Emergency Locking Retractor (ALR/ELR) on all passenger seatbelts	S	S	S	S	S	Front and rear energy-absorbing crumple zones with side-impact door beams	S	S	S	S	S
						Head-impact protection structure	S	S	S	S	S
						High-tensile-strength steel body panels	S	S	S	S	S
						Tire Pressure Monitor System (TPMS) ²⁶	S	S	S	S	S
						Engine immobilizer ²⁷	—	S	—	S	S

S = Standard — = Not Available See numbered footnotes in Disclosures section.

CARS BUILT FOR THE WAY YOU LIVE

At Toyota, we build cars for how you live. From building advanced safety features designed to help prevent crashes to driving cross-country to understand how we can make your driving experience better, our work starts with understanding your needs. Building cars for how you live also means thinking about tomorrow — from fuel efficiency and environmental innovations, to things beyond cars, like a bicycle that you can control with your mind. And because what we learn building cars can help improve lives in other places, we do things like help communities rebuild their homes quickly after a disaster and work with soup kitchens to help them serve more people faster. Toyota. Built for how you live. Together we are going places.

DISCLOSURES

1. Cargo and load capacity limited by weight and distribution. **2.** 2018 EPA-estimated mileage. Actual mileage will vary. **3.** Toyota strives to build vehicles to match customer interest and thus they typically are built with popular options and option packages. Not all options/packages are available separately and some may not be available in all regions of the country. See toyota.com for information about options/packages commonly available in your area. If you would prefer a vehicle without any or with different options, contact your dealer to check for current availability or the possibility of placing a special order. **4.** Entune™ is a trademark of Toyota Motor Corporation. Always drive safely, obey traffic laws and focus on the road while driving. Services vary by phone/carrier. Functionality depends on many factors. Services subject to change. For enrollment and more details, see toyota.com/entune. **5.** May not be compatible with all mobile phones, MP3/WMA players and like models. **6.** iPod® and iPhone® are registered trademarks of Apple Inc. All rights reserved. **7.** Advanced voice recognition capabilities vary by head unit. **8.** Apps/services vary by phone/carrier; functionality depends on many factors. Select apps use large amounts of data; you are responsible for charges. Apps and services subject to change. See toyota.com/entune for details. **9.** The Bluetooth® word mark and logos are registered trademarks owned by Bluetooth SIG, Inc., and any use of such marks by Toyota is under license. A compatible Bluetooth®-enabled phone must first be paired. Phone performance depends on software, coverage and carrier. **10.** Always drive safely, obey traffic laws and focus on the road while driving. Siri® is available on select iPhone®/iPad® models and requires Internet access. Siri® is not available in all languages or all areas and features vary by area. Some Siri® functionality and commands are not accessible in the vehicle. Data charges may apply. See apple.com and phone carrier for details. Siri® is a registered trademark of Apple Inc. **11.** Be sure to obey traffic regulations and maintain awareness of road and traffic conditions at all times. Apps/services vary by phone/carrier; functionality depends on many factors. Select apps use large amounts of data; you are responsible for charges. Apps and services subject to change. Availability and accuracy of the information provided by Scout® GPS Link is dependent upon many factors. Use common sense when relying on information provided. Services and programming subject to change. Services not available in every city or roadway. See toyota.com/entune for details. Scout® is a registered trademark of Telenav, Inc. **12.** SiriusXM audio services require a subscription sold separately, or as a package, by Sirius XM Radio Inc. **If you decide to continue service after your trial, the subscription plan you choose will automatically renew thereafter and you will be charged according to your chosen payment method at then-current rates. Fees and taxes apply. To cancel you must call SiriusXM at 1-866-635-2349. See SiriusXM Customer Agreement for complete terms at www.siriusxm.com.** All fees and programming subject to change. Not all vehicles or devices are capable of receiving all services offered by SiriusXM. Current information and features may not be available in all locations, or on all receivers. ©2017 Sirius XM Radio Inc. Sirius, XM, SiriusXM and all related marks and logos are trademarks of Sirius XM Radio Inc. **13.** HD Radio™ Technology manufactured under license from iBiquity Digital Corporation U.S. and Foreign Patents. HD Radio™ and the HD, HD Radio, and “Arc” logos are proprietary trademarks of iBiquity Digital Corp. **14.** The backup camera does not provide a comprehensive view of the rear area of the vehicle. You should also look around outside your vehicle and use your mirrors to confirm rearward clearance. Environmental conditions may limit effectiveness and view may become obscured. See *Owner's Manual* for additional limitations and details. **15.** Manual transmission only. **16.** Automatic transmission only. **17.** Drivers are responsible for their own safe driving. Always pay attention to your surroundings and drive safely. Depending on the conditions of roads, weather and the vehicle, the system(s) may not work as intended. See *Owner's Manual* for additional limitations and details. **18.** The TSS Pre-Collision System is designed to help avoid or reduce the crash speed and damage in certain frontal collisions only. It is not a substitute for safe and attentive driving. System effectiveness is dependent on road, weather and vehicle conditions. See *Owner's Manual* for additional limitations and details. **19.** Lane Departure Alert is designed to read visible lane markers under certain conditions, and provide visual and audible alerts when lane departure is detected. It is not a collision-avoidance system or a substitute for safe and attentive driving. Effectiveness is dependent on road, weather and vehicle conditions. See *Owner's Manual* for additional limitations and details. **20.** Automatic High Beams operate at speeds above 25 mph. Factors such as a dirty windshield, weather, lighting and terrain limit effectiveness, requiring the driver to manually operate the high beams. See *Owner's Manual* for additional limitations and details. **21.** Vehicle Stability Control is an electronic system designed to help the driver maintain vehicle control under adverse conditions. It is not a substitute for safe and attentive driving practices. Factors including speed, road conditions, weather and driver steering input can all affect whether VSC will be effective in preventing a loss of control. See *Owner's Manual* for additional limitations and details. **22.** Brake Assist is designed to help the driver take full advantage of the benefits of ABS. It is not a substitute for safe driving practices. Braking effectiveness also depends on proper vehicle maintenance, and tire and road conditions. See *Owner's Manual* for additional limitations and details. **23.** Smart Stop Technology® operates only in the event of certain contemporaneous brake and accelerator pedal applications. When engaged, the system will reduce power to help the brakes bring the vehicle to a stop. Factors including speed, road conditions and driver input can all impact stopping distance. Smart Stop Technology® is not a substitute for safe and attentive driving and does not guarantee instant stopping. See *Owner's Manual* for details. **24.** All the airbags and systems are Supplemental Restraint Systems. All airbags (if installed) are designed to inflate only under certain conditions and in certain types of severe collisions. To decrease the risk of injury from an inflating airbag, always wear seatbelts and sit upright in the middle of the seat as far back as possible. Do not put objects in front of an airbag or around the seatback. Do not use a rearward-facing child seat in any front passenger seat. See *Owner's Manual* for further information/warnings. **25.** Whiplash-Injury-Lessening front seats can help reduce the severity of whiplash injury in certain rear-end collisions. **26.** The Toyota Tire Pressure Monitor alerts the driver when tire pressure is critically low. For optimal tire wear and performance, tire pressure should be checked regularly with a gauge; do not rely solely on the monitor system. See *Owner's Manual* for details. **27.** The engine immobilizer is a state-of-the-art anti-theft system. When you insert your key into the ignition switch or bring a Smart Key fob into the vehicle, the key transmits an electronic code to the vehicle. The engine will only start if the code in the transponder chip inside the key/fob matches the code in the vehicle's immobilizer. Because the transponder chip is embedded in the key/fob, it can be costly to replace. If you lose a key or fob, your Toyota dealer can help. Alternatively, you can find a qualified independent locksmith to perform high-security key services by consulting your local Yellow Pages or by contacting www.aloa.org. **28.** Extra-cost color. **29.** Covers normal factory scheduled service for 2 years or 25K miles, whichever comes first. See Toyota dealer for details and exclusions. Valid only in the continental U.S. and Alaska. **30.** Does not include parts and fluids, except emergency fuel delivery. Valid only in the continental U.S. and Alaska. **31.** This floor mat was designed specifically for use in your model and model year vehicle and SHOULD NOT be used in any other vehicle. To avoid potential interference with pedal operation, each mat must be secured with its fasteners. Do not install a floor mat on top of an existing floor mat. **32.** The Toyota Genuine Accessory Warranty will only apply when the installation is performed by a trained Toyota-approved installer. Please see dealer for details. **33.** Trial length and service availability may vary by model, model year or trim.

WARRANTIES

Every Toyota Car, Truck and SUV is built to exceptional standards. And that's not idle boasting. We back it up with these Limited Warranty Coverages:

Basic: 36 months/36,000 miles (all components other than normal wear and maintenance items).

Powertrain: 60 months/60,000 miles (engine, transmission/transaxle, drive system, seatbelts and airbags).

Rust-Through: 60 months/unlimited miles (corrosion perforation of sheet metal).

Emissions: Coverages vary under Federal and California regulations. Refer to applicable *Warranty and Maintenance Guide* for details.

Accessories: For Genuine Toyota Accessories purchased at the time of the new vehicle purchase, the Toyota Accessory Warranty coverage is in effect for 36 months/36,000 miles from the vehicle's in-service date, which is the same coverage as the Toyota New Vehicle Limited Warranty.

Toyota strives to build vehicles to match customer interest and thus they typically are built with popular options and option packages. Not all options/packages are available separately and some may not be available in all regions of the country. See toyota.com for information about options/packages commonly available in your area. If you would prefer a vehicle without any or with different options, contact your dealer to check for current availability or the possibility of placing a special order. Some vehicles are shown with available equipment. Seatbelts should be worn

For Genuine Toyota Accessories purchased after the new vehicle purchase the coverage is 12 months, regardless of mileage, from the date the accessory was installed on the vehicle, or the remainder of any applicable new vehicle warranty, whichever provides greater coverage.

You may be eligible for transportation assistance if it's necessary that your vehicle be kept overnight for repairs covered under warranty. Please see your authorized Toyota dealership for further details.

For complete details about Toyota's warranties, please visit www.toyota.com, refer to the applicable *Warranty and Maintenance Guide* or see your Toyota dealer.

at all times. For details on vehicle specifications, standard features and available equipment in your area, contact your Toyota dealer. A vehicle with particular equipment may not be available at the dealership. Ask your Toyota dealer to help locate a specifically equipped vehicle.

All information presented herein is based on data available at the time of posting, is subject to change without notice and pertains specifically to mainland U.S.A. vehicles only. Prototypes shown. Actual production vehicles may vary.