

## 2014 Q5 Accessories

**Prestige Imports, Inc.**  
9201 W Colfax Ave, Lakewood, CO  
Tel: (303) 238-8101

**Audi**  
Genuine Accessories



# 2014 Q5 Accessories

**Audi**  
Genuine Accessories



**Prestige Imports, Inc.**  
9201 W Colfax Ave, Lakewood, CO  
Tel: (303) 238-8101

## Car Care



Cockpit cleaner

**Our Price: \$9.00**



Leather care

**Our Price: \$41.00**



Wax shampoo

**Our Price: \$9.00**



Plastic cleaner

**Our Price: \$11.00**



Active foam cleaner

**Our Price: \$13.00**



Insect Remover

**Our Price: \$9.00**



Wheel cleaning gel

**Our Price: \$15.00**

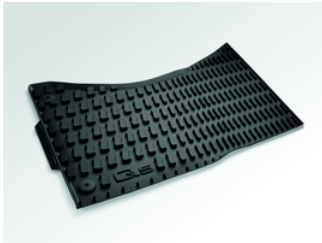
# 2014 Q5 Accessories

**Audi**  
Genuine Accessories



**Prestige Imports, Inc.**  
9201 W Colfax Ave, Lakewood, CO  
Tel: (303) 238-8101

## Comfort and Protection



All-Weather Floor Mats (Front)

**Our Price: \$69.00**



UV Sunshield

**Our Price: \$34.80**



Splash Guards (Rear)

**Our Price: \$112.00**



All-Weather Floor Mats (Rear)

**Our Price: \$51.00**



Splash Guards (Front)

**Our Price: \$112.00**



All-Weather Cargo Mat

**Our Price: \$130.00**

# 2014 Q5 Accessories

**Audi**  
Genuine Accessories



**Prestige Imports, Inc.**  
9201 W Colfax Ave, Lakewood, CO  
Tel: (303) 238-8101

## Sport and Design



Q5 running boards (right side)

**Our Price: \$952.00**



Audi sport license plate frame (black powdercoat)

**Our Price: \$55.00**



Carbon fiber valve stem caps with Audi rings logo

**Our Price: \$33.00**



License plate frame with Audi sport logo - polished

**Our Price: \$42.00**



Q5 Running Boards (left side)

**Our Price: \$952.00**



Front Spoiler - Offroad Package

**Our Price: \$975.00**



Valve stem caps

**Our Price: \$41.00**

# 2014 Q5 Accessories

**Audi**  
Genuine Accessories



**Prestige Imports, Inc.**  
9201 W Colfax Ave, Lakewood, CO  
Tel: (303) 238-8101

## Transport



Fork Mount Bike Rack

**Our Price: \$200.00**



Small cargo carrier

**Our Price: \$816.00**



Hitch Mounted Bike Carrier

**Our Price: \$250.00**



Snowboard/Ski Rack

**Our Price: \$165.00**



Ski/Snowboard Rack

**Our Price: \$214.00**



Trailer Hitch

**Our Price: \$795.00**



Aluminum Bike Rack

**Our Price: \$200.00**

# 2014 Q5 Accessories

**Audi**  
Genuine Accessories



**Prestige Imports, Inc.**  
9201 W Colfax Ave, Lakewood, CO  
Tel: (303) 238-8101

## Wheels



20" 10-Spoke Alloy Wheel

**Our Price: \$846.00**



20" 10-Spoke Alloy Wheel

**Our Price: \$910.00**



Q5 20" Summer Wheel and Tire Pkg: 10 Spoke

**Our Price: \$3,170.00**



Winter Wheel and Tire - Q5

**Our Price: \$2,795.00**

# 2014 Q5 Accessories

**Audi**  
Genuine Accessories



## **Prestige Imports, Inc.**

9201 W Colfax Ave, Lakewood, CO

Tel: (303) 238-8101

Audi Accessories purchased from an authorized Audi dealer are covered for the greater of: (1) the accessory limited warranty period (12 months or 12,000 miles, whichever occurs first) from the time of purchase; or (2) the remainder of the New Vehicle Limited Warranty period (4 years or 50,000 miles, whichever occurs first). See dealer for details.

Audi of America, Inc., believes the specifications in this brochure to be correct at the time of printing. However, specifications, standard equipment, options, fabrics, and colors are subject to change without notice. Some equipment may be unavailable when your vehicle is built. Please ask your dealer for advice concerning current availability of standard and optional equipment, and your dealer will verify that your vehicle will include the equipment you ordered. Vehicles in this brochure are shown with optional equipment. See your dealer for complete details on the New Vehicle Limited Warranty, twelve-year limited warranty against corrosion perforation, and Audi 24/7 Roadside Assistance (Roadside assistance coverage provided by Road America in the U.S. Certain conditions apply; see your dealer for details.). Tires supplied and warranted by their manufacturers.

"Audi," all model names, "Audi connect," "Audi Sport," "ASF," "e-tron," "FSI," "MMI," "multitronic," "quattro," "R tronic," "S line," "S tronic," "TFSI," "Truth in Engineering," "ultra," and the four rings logo are trademarks or registered trademarks of AUDI AG. "TDI" is a registered trademark of Volkswagen AG. "Bang & Olufsen" is a registered trademark of Bang & Olufsen. The BLUETOOTH word mark and logos are owned by the Bluetooth SIG, Inc., and any use of such marks by AUDI AG is under license. "BOSE" and "AudioPilot" are registered trademarks of the Bose Corporation. "GOOGLE" and "Google Earth" are trademarks of Google Inc. "SiriusXM" and all related marks and logos are trademarks of Sirius XM Radio Inc. and its subsidiaries. "Tiptronic" is a registered trademark of Dr. Ing. h.c. F. Porsche AG. All other trademarks are the property of their respective owners. Some European models shown.

Audi MMI® Navigation plus depends on signals from the worldwide Global Positioning Satellite network. The vehicle's electrical system and existing wireless and satellite technologies must be available and operating properly for the system to function. The system is designed to provide you with suggested routes in locating addresses, destinations and other points of interest. Changes in street names, construction zones, traffic flow, points of interest and other road system changes are beyond the control of Audi of America, Inc. Complete detailed mapping of lanes, roads, streets, toll roads, highways, etc., is not possible, therefore you may encounter discrepancies between the mapping and your actual location. Please rely on your individual judgment in determining whether or not to follow a suggested Audi MMI Navigation plus route. For mapping updates please see your Audi dealer or call 1-800-FOR-AUDI for details.

BLUETOOTH®: Your Audi vehicle is equipped with a phone preparation utilizing BLUETOOTH® interface to enable hands-free functionality (compatible mobile phones sold separately). You will need a BLUETOOTH® enabled mobile phone in order to utilize this function. Not all BLUETOOTH® enabled mobile phone models are compatible with Audi phone preparation. Visit [audiusa.com/bluetooth](http://audiusa.com/bluetooth), or contact your local Audi dealer for the latest listing of compatible phones. Audi recommends use of the Audi phone cradle (sold separately) with your mobile phone while operating this vehicle.

SiriusXM Satellite Radio and Traffic subscriptions sold separately or as a package after trial expires. SiriusXM Traffic service available in select markets. Subscriptions are governed by SiriusXM Customer Agreement (see [www.siriusxm.com](http://www.siriusxm.com)) and are continuous until you call SiriusXM to cancel. SiriusXM U.S. Satellite Service available only to those 18 and older in the 48 contiguous U.S.A., D.C. and Puerto Rico (with coverage limitations).

Summer performance tires are supplied and warranted by their manufacturer. High-performance tires are designed for optimum performance and handling in warm climates. They are not suitable for cold, snowy, or icy weather conditions. If you drive under those circumstances, you should equip your vehicle with all-season or winter tires, which offer better traction under those conditions. We suggest you use the recommended winter or all-season tire specified for your car or its equivalent. These high-performance tires also have a lower aspect ratio that aids performance and handling; however, in order to avoid tire, rim or vehicle damage, it is important that the inflation pressure is regularly checked and maintained at optimum levels. Please also remember in making your selection that, while these tires deliver responsive handling, they may ride less comfortably and make more noise than other choices. Finally, these tires may wear more quickly than other choices.

For further information on all these topics, please consult the owner's manual, your local dealer or call 1-800-FOR-AUDI.

©2014 Audi of America, Inc. Printed in U.S.A.