

14 TAURUS+SHO



SPECIFICATIONS



Go Further



Awe-inspiring power AND class-leading highway mpg¹

Limited. Tuxedo Black Metallic. Available equipment.

¹EPA-estimated rating: 22 city/32 hwy/26 combined mpg, 2.0L EcoBoost® I-4, FWD. Actual mileage will vary. Class is Full-Size Sedans, Non-Hybrid vs. 2013/2014 competitors. ²Always wear your safety belt and secure children in the rear seat. ³Figures achieved using 93-octane premium fuel.

SPECIFICATIONS

Standard Features

Mechanical

4-wheel disc Anti-Lock Brake System (ABS)
 Battery Management System
 Brake- and engine-actuated traction control
 Electric power-assisted steering (EPAS)
 Suspension – Front: independent MacPherson strut
 Suspension – Rear: independent multilink
 Torque Vectoring Control

Seating

4-way adjustable front head restraints
 Front bucket seats
 60/40 split-fold rear seat back with fold-down center armrest

Interior

12-volt powerpoints (3)
 Accessory delay for power features
 Adjustable rear vents
 Driver and front-passenger seat back map pockets
 Front and rear carpeted floor mats
 Front center floor console with armrest and storage
 Front overhead console with dome and map lights
 Power door locks
 Rear-seat reading lights
 Sliding sun visors with illuminated vanity mirrors
 Steering wheel-mounted cruise, audio and 5-way MyFord® controls (2)
 Tilt/telescoping steering column

Exterior

Easy Fuel® capless fuel filler
 Light-emitting diode (LED) taillamps
 Power sideview mirrors with integrated blind spot mirrors
 Rear-window defroster
 Solar-tinted glass

Safety & Security

Personal Safety System™ for driver and front passenger includes dual-stage front airbags²; safety belt pretensioners, safety belt energy-management retractors, safety belt usage sensors, driver's seat position sensor, crash severity sensor, restraint control module and Front-Passenger Sensing System
 3-point safety belts for all seating positions
 AdvanceTrac® electronic stability control and Curve Control
 Battery saver
 Belt-Minder® front safety belt reminder
 Child-safety rear door locks
 Emergency trunk release
 Front-seat side airbags²
 Illuminated Entry System
 LATCH (Lower Anchors and Tether Anchors for Children)

MyKey®

Safety Canopy® System with side-curtain airbags² and rollover sensor
 SecuriCode™ invisible keypad
 SecuriLock® Passive Anti-Theft System
 SOS Post-Crash Alert System™
 Tire Pressure Monitoring System (excludes spare)

Engines/EPA-Estimated Ratings & Dimensions

3.5L Ti-VCT V6

288 hp @ 6,500 rpm
 254 lb.-ft. of torque @ 4,000 rpm
 6-speed SelectShift® automatic
 FWD 19 city/29 hwy/23 combined mpg
 AWD 18 city/26 hwy/21 combined mpg

2.0L EcoBoost® I-4

240 hp @ 5,500 rpm³
 270 lb.-ft. of torque @ 1,675–4,800 rpm³
 6-speed SelectShift automatic
 FWD 22 city/32 hwy/26 combined mpg

3.5L EcoBoost® V6

365 hp @ 5,500 rpm³
 350 lb.-ft. of torque @ 3,000 rpm³
 6-speed SelectShift automatic
 AWD 17 city/25 hwy/20 combined mpg

Exterior

Wheelbase	112.9"
Length	202.9"
Height	60.7"
Width – Excluding mirrors	76.2"
Width – Including mirrors	85.7"

Interior

	Front/Rear
Head room	39.0"/37.8"
Shoulder room	57.9"/56.9"
Hip room	56.3"/55.8"
Leg room	41.9"/38.1"

Capacities (cu. ft.)

Passenger volume	102.2
Luggage capacity	20.1
Total interior volume	122.3

Fuel Tank (gal.)

FWD/AWD	19.0
---------	------

14TAURUS
 ford.com





SE. Deep Impact Blue Metallic. SEL. Ingot Silver Metallic. Available equipment.

MyFord 4.2" instrument panel LCD display.

SEL. Rear view camera.¹

20.1 cu. ft. of trunk space.

SE

Equipment Group 100A
Includes all standard features, plus:

Mechanical

3.5L Ti-VCT V6 engine
6-speed SelectShift[®] automatic transmission with Sport Mode and shifter button activation
Front-wheel drive (FWD)

Seating

6-way power driver and front-passenger seats with manual lumbar adjustment
Cloth seats

Interior

AM/FM stereo/single-CD player with MP3 capability and 6 speakers
Auxiliary audio input jack
Cruise control
Day/night rearview mirror
Message center
MyFord[®] with 4.2" LCD displays in instrument cluster and center stack
Power windows with one-touch-up/-down driver's side window feature
Single-zone manual air conditioning

Exterior

17" Sparkle Silver-painted aluminum wheels with P235/60R17 all-season tires
Black, power sideview mirrors
Quasi-dual exhaust with chrome tips
Remote Keyless Entry System with integrated keyhead transmitter remotes (2)
Wiper-activated halogen headlamps with autolamp

Available Options

2.0L EcoBoost[®] I-4 engine with 6-speed SelectShift automatic transmission with Sport Mode and shifter button activation
All-weather floor mats
Ash cup/coin holder with lighter element
Cargo organizer

SEL

Equipment Group 200A
Includes select SE features, plus:

Seating

Unique cloth seats

Interior

Auto-dimming rearview mirror
Covered front-row cupholders and storage
Dual-zone electronic automatic temperature control
Ford SYNC[®] voice-activated, in-vehicle connectivity system
Leather-wrapped shift knob with chrome trim
Leather-wrapped steering wheel
Message center with compass
Outside temperature display
Remote Start System
SiriusXM Satellite Radio with 6-month trial subscription

Exterior

18" Sparkle Silver-painted aluminum wheels with P235/55R18 all-season tires
Anti-theft perimeter alarm
Body-color, power, heated sideview mirrors with security approach lamps
LED supplemental park lamps

SPECIFICATIONS

Available Equipment Group

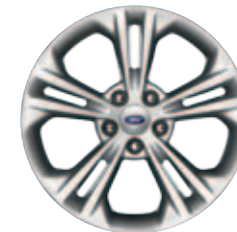
Equipment Group 201A – SYNC with MyFord Touch[®] voice-activated, in-vehicle connectivity system, which includes SYNC Services²; 2 configurable 4.2" color LCD displays in instrument cluster; 8" LCD color touch screen in center stack; media hub with 2 USB ports, SD card reader and audio/video input jacks + additional center channel speaker + power-adjustable pedals + Reverse Sensing System + rear view camera

Available Options

2.0L EcoBoost I-4 engine with 6-speed SelectShift automatic transmission with Sport Mode and shifter button activation (n/a with AWD)
20" 10-spoke machined and low-gloss ebony-painted aluminum wheels with P245/45R20 all-season tires (requires 201A)
All-weather floor mats
All-wheel drive (AWD)
Ash cup/coin holder with lighter element
Cargo organizer
Leather-trimmed seats with heated front seats
Power moonroof (requires 201A)
Rear decklid spoiler
Voice-activated Navigation System with integrated SiriusXM Traffic and Travel Link with 6-month trial subscription (requires 201A)



17" Sparkle Silver-Painted Aluminum
Standard: **SE**



18" Sparkle Silver-Painted Aluminum
Standard: **SEL**



20" 10-Spoke Machined and Low Gloss Ebony-Painted Aluminum
Available: **SEL**

¹Available feature. ²SYNC Services varies by trim level and model year and may require a subscription. Traffic alerts and turn-by-turn directions available in select markets. Message and data rates may apply. Ford Motor Company reserves the right to change or discontinue this product service at any time without prior notification or incurring any future obligation.

Limited

SPECIFICATIONS

Equipment Group 300A

Includes select SEL features, plus:

Seating

10-way power driver and front-passenger seats with driver's side memory feature

Heated and cooled front seats

Leather-trimmed seats with perforated leather inserts

Interior

Additional center speaker

Ambient lighting

Bright front door-sill scuff plates

Cargo net

Intelligent Access with push-button start (2 key fob transmitters)

Leather-wrapped steering wheel with wood accent

Power-tilt/-telescoping steering column

Power windows with global open and one-touch-up/-down for driver and front passenger

Rear view camera

SYNC® with MyFord Touch® voice-activated, in-vehicle connectivity system which includes SYNC Services¹; 2 configurable 4.2" color LCD displays in instrument cluster; 8" LCD touch screen in center stack; and media hub with 2 USB ports, SD card reader and audio/video input jacks

Universal garage door opener

Exterior

19" premium Luster Nickel-painted aluminum wheels with P255/45R19 LRR all-season tires

Chrome-accented painted grille

Chrome-accented, power, heated sideview mirrors with memory and security approach lamps

Reverse Sensing System

Available Equipment Group

Equipment Group 301A – Auto high beams with rain-sensing wipers + auto-dimming driver's sideview mirror + BLIS® (Blind Spot Information System) with cross-traffic alert + power-adjustable pedals with memory + heated steering wheel + heated rear outboard seats + rear-window power sunshade + "LIMITED" branded front floor mats + Audio System from Sony® with 12 speakers and HD Radio™ Technology

Available Options & Package

2.0L EcoBoost® I-4 engine with 6-speed SelectShift® automatic transmission with Sport Mode and shifter button activation (n/a with AWD)

20" 10-spoke machined and low-gloss ebony-painted aluminum wheels with P245/45R20 all-season tires (requires 301A)

20" polished aluminum wheels with P245/45R20 all-season tires (requires 301A)

All-weather floor mats

All-wheel drive (AWD)

Ash cup/coin holder with lighter element

Cargo organizer

Driver Assist Package includes adaptive cruise control and collision warning with brake support, Lane-Keeping System, and active park assist (requires 301A)

Multicontour front seats with Active Motion® (requires 301A)

Power moonroof (requires 301A)

Rear decklid spoiler

Voice-activated Navigation System with integrated SiriusXM Traffic and Travel Link with 6-month trial subscription



Tuxedo Black Metallic. Available equipment.

Intelligent Access with push-button start.

Rear-window power sunshade.²

"LIMITED" branded front floor mats.²



19" Premium Luster Nickel-Painted Aluminum Standard



20" Polished Aluminum Available



20" 10-Spoke Machined and Low Gloss Ebony-Painted Aluminum Available

¹SYNC Services varies by trim level and model year and may require a subscription. Traffic alerts and turn-by-turn directions available in select markets. Message and data rates may apply. Ford Motor Company reserves the right to change or discontinue this product service at any time without prior notification or incurring any future obligation. ²Available feature.

SHO

SPECIFICATIONS

Equipment Group 400A

Includes select LIMITED features, plus:

Mechanical

3.5L EcoBoost® V6 engine

2.77:1 final drive ratio

6-speed SelectShift® automatic transmission with Sport Mode and paddle shifters

13.85" vented front rotors

All-wheel drive (AWD)

Sport-tuned suspension

Seating

Leather-trimmed seats with perforated inserts

"SHO" graphics embroidered on front seats

Interior

Aluminum pedal covers

Power-adjustable brake and accelerator pedals with memory

"SHO" branded front floor mats

Top grain leather-wrapped steering wheel

Exterior

19" premium Luster Nickel-painted aluminum wheels with P255/45R19 LRR all-season tires

Dual exhaust with chrome tips

High-intensity discharge (HID) headlamps

LED supplemental park lamps with piano black bezels

Piano black mesh grille

Piano black, power, heated sideview mirrors with memory, security approach lamps and auto-dimming driver's side

Rear spoiler

"SHO" branded side fender vents

Available Equipment Group

Equipment Group 401A – Auto high beams with rain-sensing wipers + BLIS® (Blind Spot Information System) with cross-traffic alert + heated steering wheel + heated rear outboard seats + rear-window power sunshade + Audio System from Sony® with 12 speakers and HD Radio™ Technology

Available Options & Packages

20" 10-spoke machined and low-gloss ebony-painted aluminum wheels with P245/45R20 all-season tires (requires 401A)

20" machined and premium painted aluminum wheels with P245/45R20 all-season tires (requires 401A)

Driver Assist Package includes adaptive cruise control and collision warning with brake support, Lane-Keeping System, and active park assist (requires 401A; n/a with SHO Performance Package)

All-weather floor mats

Ash cup/coin holder with lighter element

Cargo organizer

Multicontour front seats with Active Motion® (requires 401A)

Power moonroof (requires 401A)

SHO Performance Package includes an enhanced sport-tuned suspension, performance friction brake pads, sport-calibrated steering, AdvanceTrac® electronic stability control "Sport Mode" setting, 3.16:1 final drive ratio, Alcantara®-trimmed steering wheel, 20" machined and premium painted aluminum wheels with P245/45R20 Performance Summer Tire Compound¹ and tire sealant/inflation kit (n/a with Driver Assist Package)

Voice-activated Navigation System with integrated SiriusXM Traffic and Travel Link with 6-month trial subscription



Charcoal Black leather-trimmed seats with embroidered "SHO" graphic.

Larger vented front rotors.

"SHO" 3.5L EcoBoost V6 engine cover.

Rear spoiler.



19" Premium Luster Nickel-Painted Aluminum Standard



20" Machined and Premium Painted Aluminum Available



20" 10-Spoke Machined and Low Gloss Ebony-Painted Aluminum Available

¹Ford does not recommend using summer tires when temperatures drop to approximately 40°F or below (depending on tire wear and environmental conditions) or in snow/ice conditions. If the vehicle must be driven in these conditions, Ford recommends using all-season or winter snow tires.

Exteriors



White Platinum Metallic Tri-coat



Oxford White



Ingot Silver Metallic



Sterling Gray Metallic



Ruby Red Metallic Tinted Clearcoat



Sunset Metallic



Kodiak Brown Metallic



Deep Impact Blue Metallic



Dark Side Metallic



Tuxedo Black Metallic

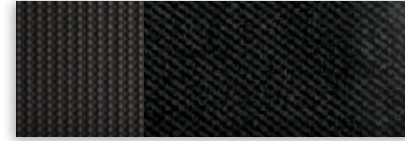
Interiors



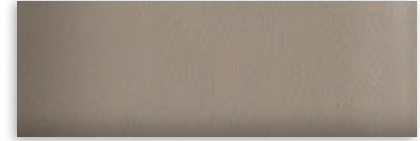
1 Dune Cloth



2 Dune Cloth



3 Charcoal Black Cloth



4 Dune Leather



5 Charcoal Black Leather



6 Dune Leather with Perforated Inserts



7 Charcoal Black Leather with Perforated Inserts



8 Charcoal Black Leather with Charcoal Black Perforated Inserts and front-seat embroidered "SHO" graphics

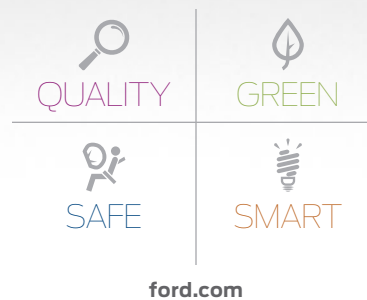


9 Charcoal Black Leather with Mayan Gray Miko® Suede Perforated Inserts and front-seat embroidered "SHO" graphics

Exteriors	Interiors								
	SE	SEL				Limited		SHO	
White Platinum Metallic Tri-coat ¹		2	3	4	5	6	7	8	9
Oxford White	1	2							
Ingot Silver Metallic	1	2	3	4	5	6	7	8	9
Sterling Gray Metallic	1	2	3	4	5	6	7	8	9
Ruby Red Metallic Tinted Clearcoat ¹		2	3	4	5	6	7	8	9
Sunset Metallic	1	2	3	4	5	6	7		
Kodiak Brown Metallic	1	2	3	4	5	6	7		
Deep Impact Blue Metallic	1	2	3	4	5	6	7	8	9
Dark Side Metallic	1	2	3	4	5	6	7	8	9
Tuxedo Black Metallic	1	2	3	4	5	6	7	8	9

4, 5 Optional on SEL

¹Additional charge. Colors are representative only. See your dealer for actual paint/trim options.



New Vehicle Limited Warranty. We want your Ford Taurus ownership experience to be the best it can be. Under this warranty, your new vehicle comes with 3-year/36,000-mile bumper-to-bumper coverage, 5-year/60,000-mile Powertrain Warranty coverage, 5-year/60,000-mile safety restraint coverage, and 5-year/unlimited-mile corrosion (perforation) coverage – all with no deductible. Please ask your Ford Dealer for a copy of this limited warranty. **Roadside Assistance.** Covers your vehicle for 5 years or 60,000 miles, so you have the security of knowing that help may be only a phone call away should you run out of fuel, lock yourself out of the vehicle or need towing. Your Ford Dealer can provide complete details on all of these advantages. **Ford Credit.** Get the ride you want. Whether you plan to lease or finance, you'll find the choices that are right for you at Ford Credit. Ask your Ford Dealer for details or check us out at fordcredit.com. **Ford Extended Service Plan.** For a purchase or lease, the Ford Extended Service Plan (ESP) gives you "Peace-of-Mind" protection designed to cover key vehicle components and protect you from the cost of unexpected repairs. Ask your dealer for a Ford ESP, the only service contract backed exclusively by Ford and honored at all Ford Lincoln dealerships. **Insurance Services.** Get Ford Motor Company quality in your auto insurance. Our program offers industry-leading benefits and competitive rates. Call 1-877-367-3847, or visit us at fordvip.com for a no-obligation quote. Insurance offered by American Road Services Company (in CA, American Road Insurance Agency), a licensed agency and subsidiary of Ford Motor Company.

Comparisons based on 2013/2014 competitive models (class is Full-Size Sedans, Non-Hybrid), publicly available information and Ford certification data at time of release. Some features discussed may be optional. Vehicles shown may contain optional equipment. Features shown may be offered only in combination with other options or subject to additional ordering requirements or limitations. Dimensions shown may vary due to optional features and/or production variability. Following release of the PDF, certain changes in standard equipment, options and the like, or product delays may have occurred which would not be included in these pages. Your Ford Dealer is the best source for up-to-date information. Ford Division reserves the right to change product specifications at any time without incurring obligations. **Alcantara** is a registered trademark of Alcantara S.p.A., Italy. **HD Radio** is a proprietary trademark of iBiquity Digital Corp. **Miko** is a registered trademark of Miko s.r.l. **SiriusXM Satellite Radio, SiriusXM Traffic and Travel Link** subscriptions sold separately or as a package after trial period. See SiriusXM Customer Agreement for complete terms at siriusxm.com. Fees and programming subject to change. Sirius satellite service is available only to those at least 18 years of age in the 48 contiguous USA, DC, and Puerto Rico (with coverage limitations). Sirius, XM and all related marks and logos are trademarks of Sirius XM Radio Inc. **Sony** is a registered trademark of the Sony Corporation.

Follow Ford:



facebook.com/fordtaurus



twitter.com/FordTaurus



youtube.com/fordtaurus



gplus.to/FordMotorCompany