

HONDA for 2010 *Making Headlines Again!*

*"First Honda Cars made in
Canada roll out at plant"*

November 1985 – Globe & Mail

*"Honda tops
Consumer
Reports survey"*

March 2009 – Toronto Star

**Honda Celebrates
its 40th Anniversary
in Canada!**

April 2009

**Honda's 5 Millionth
Made in Canada Vehicle**

April 2009



**Introducing...
the all new 2010 Accord Crosstour.**



www.HondaOntario.com
Ontario Honda Dealers
THE **SMARTER** WAY TO BUY.



HONDA

2010 Fit



*With 21 cubic feet of interior space,
the Fit easily accommodates four friends and all their stuff.*

FIT DX

- 1.5L 117hp 16-Valve SOHC i-VTEC® 4-Cylinder Engine
- 106 lb. ft. Torque @ 4,800 rpm
- 2,572L Passenger Volume
- 1,622L Cargo Space
- Advanced Compatibility Engineering™ (ACE™) Body Structure
- Front Active Head Restraints
- 60/40 Split 2nd-Row Magic Seat®
- 160-Watt AM/FM/CD Audio System with 2 Speakers and MP3/Windows Media® Audio Playback Capability
- Rear Underseat Storage
- Drive-by-Wire Throttle System™
- Front, Side & Side Curtain Airbags
- 4-Wheel Anti-Lock Braking System (ABS) with Electronic Brake Distribution (EBD)
- Power Assisted Ventilated Front Disc/Rear Drum Brakes
- Electric Power Assisted Rack and Pinion Steering
- Independent Front & Rear Suspension
- Power Windows with Auto Up / Down Driver's Window
- MP3 / Auxiliary Input Jack

\$15,910 MSRP* OR \$17,110 MSRP*

5-Speed Automatic
with Grade Logic
Control

FIT DX-A

Adds to or replaces DX features with:

- Air Conditioning with Air Filtration System

\$17,310 MSRP* OR \$18,510 MSRP*

5-Speed Automatic
with Grade Logic
Control

FIT LX

Adds to or replaces DX-A features with:

- 15" Aluminum Alloy Wheels
- Remote Entry System
- Body Coloured Rear Roofline Spoiler
- Heated Side Mirrors
- Illuminated Steering Wheel-Mounted Cruise Control
- 160-Watt AM/FM/CD Audio System with 4 Speakers and MP3/Windows Media® Audio Playback Capability

\$18,410 MSRP* OR \$19,610 MSRP*

5-Speed Automatic
with Grade Logic
Control

FIT SPORT

Adds to or replaces LX features with:

- 16" Aluminum Alloy Wheels
- USB Device Connector
- Chrome Exhaust Finisher
- Rear Stabilizer Bar
- 160-Watt AM/FM/CD Audio System with 6 Speakers and MP3/Windows Media® Audio Playback Capability
- Security Alarm System
- Leather Wrapped Steering Wheel
- Body Coloured Underbody Spoiler Kit
- Fog Lights

\$20,310 MSRP* OR \$21,510 MSRP*

5-Speed Automatic
with Grade Logic
Control

*All MSRPs include Freight and Fees

What makes this Honda a Honda?



SOLID SAFETY

The Fit's Advanced Compatibility Engineering™ (ACE™) body structure disperses frontal impact energy to increase occupant protection.



STOW AND GO

The Fit's class-leading cargo volume includes a compartment in the underside of the rear seat for small items or valuables—no space goes to waste!



HONDA



Car and Driver's "10Best"
3rd Straight Year – 2009
caranddriver.com



www.HondaOntario.com
Ontario Honda Dealers
THE **SMARTER** WAY TO BUY.

*MSRP is \$15,910 / \$17,110 / \$17,310 / \$18,510 / \$18,410 / \$19,610 / \$20,310 / \$21,510 for a new 2010 Fit DX, model GE8G2AE / 2010 Fit DX Automatic, model GE8H2AE / 2010 Fit DX-A, model GE8G3AE / 2010 Fit DX-A Automatic, model GE8H3AE / 2010 Fit LX, model GE8G5AE / 2010 Fit LX Automatic, model GE8H5AE / 2010 Fit Sport, model GE8G8AE / 2010 Fit Sport Automatic, model GE8H8AE. Includes freight and PDI of \$1,395, A/C tax, and environmental and OMVIC fees. License, insurance, registration and taxes are extra. Retailer may sell for less. Retailer order / trade may be necessary. Subject to change or cancellation without notice. See your Honda retailer for full details.

2010 Civic SEDAN



Canada's best-selling car[‡] fits as neatly into a tight budget as it does into a tight parking spot.

CIVIC DX SEDAN NEW FOR '10...

- MP3/Auxiliary Input Jack and Front Console Armrest with Storage

Plus...

- 1.8L 140hp 16-Valve SOHC i-VTEC® 4-Cylinder Engine
- Drive-by-Wire Throttle System™
- Advanced Compatibility Engineering™ (ACE™) Body Structure
- Two Tier Instrument Panel
- Dual Stage, Dual Threshold Front Airbags
- Front Side Airbags with Passenger Side Occupant Position Detection System (OPDS)
- Side Curtain Airbags
- Front Active Head Restraints
- Power Windows & Folding Power Side Mirrors
- 160-Watt AM/FM/CD Audio System with 4 Speakers and MP3/Windows Media® Audio Playback Capability
- Tilt & Telescopic Steering Column

\$17,420 MSRP* OR \$18,620 MSRP*
5-Speed Automatic with Grade Logic Control

CIVIC DX-A SEDAN

Adds to or replaces DX features with:

- Air Conditioning with Air Filtration System

\$18,820 MSRP* OR \$20,020 MSRP*
5-Speed Automatic with Grade Logic Control

CIVIC DX-G SEDAN

Adds to or replaces DX-A features with:

- 15" Aluminum Alloy Wheels
- Electric Variable Power Assisted Rack and Pinion Steering (MT only)
- Keyless Remote Entry
- Programmable Automatic Power Door Locks
- Steering Wheel-Mounted Cruise Control

\$20,110 MSRP* OR \$21,310 MSRP*
5-Speed Automatic with Grade Logic Control

CIVIC SPORT SEDAN

Adds to or replaces DX-G features with:

- Leather Wrapped Steering Wheel
- Black Interior with Silver Contrast Stitching
- Exhaust Finisher
- USB Device Connector
- 16" Aluminum Alloy Wheels
- Power Assisted Ventilated Front & Solid Rear Disc Brakes
- Body Coloured Power Heated Folding Side Mirrors
- Power Moonroof with Tilt Feature
- Power Windows with Auto Up/Down Driver's Window
- Exterior Temperature Indicator
- Rear Beverage Holders
- 60/40 Split Fold-Down Rear Seatback
- Remote Electronic Trunk Release

\$22,310 MSRP* OR \$23,510 MSRP*
5-Speed Automatic with Grade Logic Control

CIVIC EX-L SEDAN

Adds to or replaces Sport features with:

- Vehicle Stability Assist (VSA®) with Traction Control
- Leather Trimmed Seating Surfaces
- Heated Front Seats
- Two 12-Volt Power Outlets
- 160-Watt AM/FM/CD Audio System with 6 Speakers and MP3/Windows Media® Audio Playback Capability
- Steering Wheel-Mounted Audio Controls

\$24,210 MSRP* OR \$25,410 MSRP*
5-Speed Automatic with Grade Logic Control

*All MSRPs include Freight and Fees

What makes this Honda a Honda?



PEDESTRIAN INJURY MITIGATION

All Civic models feature an impact energy-absorbing hood, front bumper and fenders; deformable hood hinges and windshield wiper pivots to reduce the severity of pedestrian injury in a collision.



VALUE FOR THE LONG RUN

Lowest 5-Year Ownership Costs—
Compact Sedan 2009



HONDA



www.HondaOntario.com
Ontario Honda Dealers
THE SMARTER WAY TO BUY.

*MSRP is \$17,420 / \$18,620 / \$18,820 / \$20,020 / \$20,110 / \$21,310 / \$22,310 / \$23,510 / \$24,210 / \$25,410 for a new 2010 Civic DX Sedan, model FA1E2AEX / 2010 Civic DX Sedan Automatic, model FA1F2AEX / 2010 Civic DX-A Sedan, model FA1E2AE4X / 2010 Civic DX-A Sedan Automatic, model FA1F2AE4X / 2010 Civic DX-G Sedan, model FA1E4AEX / 2010 Civic DX-G Sedan Automatic, model FA1F4AEX / 2010 Civic Sport Sedan, model FA1E6AJX / 2010 Civic Sport Sedan Automatic, model FA1F6AJX / 2010 Civic EX-L Sedan, model FA1E0AJNX / 2010 Civic EX-L Sedan Automatic, model FA1F0AJNX. Includes freight and PDI of \$1,395, A/C tax, and environmental and OMVIC fees. License, insurance, registration and taxes are extra. Retailer may sell for less. Retailer order / trade may be necessary. Subject to change or cancellation without notice. See your Honda retailer for full details. ‡As reported by Canadian Manufacturers in calendar year 2009. †Models with Vehicle Stability Assist, not Si.

2010 Civic COUPE



Civic Coupe's steep windshield angle highlights an aggressive profile, with a low, wide stance and aerodynamic shape.

CIVIC DX COUPE

NEW FOR '10...

- MP3/Auxiliary Input Jack and Front Console Armrest with Storage

Plus...

- 1.8L 140hp 16-Valve SOHC i-VTEC® 4-Cylinder Engine
- Advanced Compatibility Engineering™ (ACE™) Body Structure
- Drive-by-Wire Throttle System™
- Front Active Head Restraints
- Independent Control-Link MacPherson Strut Front Suspension
- Independent Reactive-Link Double-Wishbone Rear Suspension
- Two Tier Instrument Panel
- Power Windows & Folding Power Side Mirrors
- 160-Watt AM/FM/CD Audio System with 4 Speakers and MP3/Windows Media® Audio Playback Capability
- Audio Anti-Theft
- Rear Decklid Spoiler
- Tilt & Telescopic Steering Column
- Speed Sensitive Volume Control

\$17,620 MSRP* OR \$18,820 MSRP*

5-Speed Automatic with Grade Logic Control

CIVIC DX-A COUPE

Adds to or replaces DX features with:

- Air Conditioning with Air Filtration System

\$19,020 MSRP* OR \$20,220 MSRP*

5-Speed Automatic with Grade Logic Control

CIVIC DX-G COUPE

Adds to or replaces DX-A features with:

- 15" Aluminum Alloy Wheels
- Electric Variable Power Assisted Rack and Pinion Steering (MT only)
- Power Assisted Rack and Pinion Steering (AT only)
- Keyless Remote Entry
- Programmable Automatic Power Door Locks
- Steering Wheel-Mounted Cruise Control

\$20,410 MSRP* OR \$21,610 MSRP*

5-Speed Automatic with Grade Logic Control

CIVIC LX COUPE

Adds to or replaces DX-G features with:

- USB Device Connector
- One Touch Power Moonroof with Tilt Feature
- 16" Aluminum Alloy Wheels
- Power Assisted Solid Rear Disc Brakes
- Body Coloured Door Handles & Heated Side Mirrors
- Variable Intermittent Windshield Wipers
- Exterior Temperature Indicator
- Power Windows with Auto Up/Down Driver's Window
- Remote Electronic Trunk Release
- 60/40 Split Fold-Down Rear Seatback

\$22,310 MSRP* OR \$23,510 MSRP*

5-Speed Automatic with Grade Logic Control

CIVIC EX-L COUPE

Adds to or replaces LX features with:

- Vehicle Stability Assist (VSA®) with Traction Control
- Leather Trimmed Seating Surfaces
- Heated Front Seats
- Leather Wrapped Steering Wheel
- Circular Chrome Exhaust Finisher
- Two 12-Volt Power Outlets
- 350-Watt AM/FM/CD Premium Audio System with 7 Speakers including Subwoofer and MP3/Windows Media® Audio Playback Capability
- Steering Wheel-Mounted Audio Controls

\$24,510 MSRP* OR \$25,710 MSRP*

5-Speed Automatic with Grade Logic Control

*All MSRPs include Freight and Fees

What makes this Honda a Honda?



INNOVATION IN MOTION

Unique two tier instrument panel gives you a clear view of important information while letting you concentrate on the road.



alg.com

**Mainstream Brand
Residual Value Award
in Canada**

BANK ON IT

Legendary Honda quality and reliability protects your automotive investment not just for miles—for years.



HONDA



www.HondaOntario.com
Ontario Honda Dealers
THE **SMARTER** WAY TO BUY.

*MSRP is \$17,620 / \$18,820 / \$19,020 / \$20,220 / \$20,410 / \$21,610 / \$22,310 / \$23,510 / \$24,510 / \$25,710 for a new 2010 Civic DX Coupe, model FG1A2AE / 2010 Civic DX Coupe Automatic, model FG1B2AE / 2010 Civic DX-A Coupe, model FG1A2AEX / 2010 Civic DX-A Coupe Automatic, model FG1B2AEX / 2010 Civic DX-G Coupe, model FG1A3AEX / 2010 Civic DX-G Coupe Automatic, model FG1B3AEX / 2010 Civic LX Coupe, model FG1A6AJ / 2010 Civic LX Coupe Automatic, model FG1B6AJ / 2010 Civic EX-L Coupe, model FG1A0AJN / 2010 Civic EX-L Coupe Automatic, model FG1B0AJN. Includes freight and PDI of \$1,395, A/C tax, and environmental and OMVIC fees. License, insurance, registration and taxes are extra. Retailer may sell for less. Retailer order / trade may be necessary. Subject to change or cancellation without notice. See your Honda retailer for full details. †Models with Vehicle Stability Assist, not SI.

2010 Civic Si



Get to know Civic spirit in its purest form. Experience a heavenly ride featuring a sweet-shifting 6-speed transmission and pinpoint handling.

CIVIC Si COUPE OR CIVIC Si SEDAN

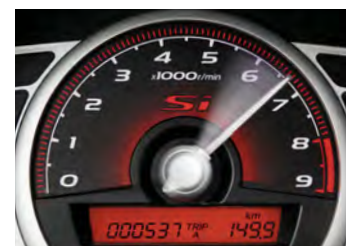
- 2.0L 197hp 16-Valve DOHC i-VTEC® Engine
- Vehicle Stability Assist (VSA®) with Traction Control
- Fog Lights
- USB Device Connector
- 139 lb. ft. Torque @ 6,100 rpm
- 8,000 rpm Redline
- Close Ratio 6-Speed Manual Transmission
- Electric Variable Power Assisted Rack and Pinion Steering
- Helical Limited Slip Differential
- Sport Tuned Front & Rear Suspension
- Oval Chrome Exhaust Finisher
- Sport Seats with 'Si' Stitching & Embroidery
- Rear Wing Spoiler with Integrated LED Brakelight
- 17" Aluminum Alloy Wheels
- 350-Watt AM/FM/CD Premium Audio System with 7 Speakers including Subwoofer and MP3/Windows Media® Audio Playback Capability
- Leather Wrapped Steering Wheel and Aluminum Shift Knob
- Drilled Aluminum Pedal Pads
- Remote Entry System with Electronic Trunk Release
- Air Conditioning with Air Filtration
- Power Moonroof with Tilt Feature
- Power Windows and Door Locks
- Front Map Light
- Two 12-Volt Power Outlets

\$27,410 MSRP*

*MSRP includes Freight and Fees



What makes this Honda a Honda?



RED ALERT

Si's red-toned tachometer and rev limit indicator, calibrated to a spine-tingling 8,000 rpm redline.



THE JOY OF SIX

The Si's exceptional short throw 6-speed shifter is recognized as one of the finest in the automotive industry, regardless of price.



HONDA



www.HondaOntario.com
Ontario Honda Dealers
THE **SMARTER** WAY TO BUY.

*MSRP is \$27,410 / \$27,410 for a new 2010 Civic Si Coupe, model FG2A5AJY / 2010 Civic Si Sedan, model FA5E5AJY. Includes freight and PDI of \$1,395, A/C tax, and environmental and OMVIC fees. License, insurance, registration and taxes are extra. Retailer may sell for less. Retailer order / trade may be necessary. Subject to change or cancellation without notice. See your Honda retailer for full details.

2010 Civic HYBRID



With exceptional fuel efficiency and an ultra low emission rating, Civic Hybrid is a model of more responsible driving.

CIVIC HYBRID

- 1.3L 110hp i-VTEC® 4-Cylinder Engine with Integrated Motor Assist (IMA®)
- Vehicle Stability Assist (VSA®) with Traction Control
- Drive-by-Wire Throttle System™
- 4-Wheel Anti-Lock Braking System (ABS) with Electronic Brake Distribution and Brake Assist
- Driver and Front Passenger Dual Stage, Dual Threshold Airbags
- Side Airbags and Side Curtain Airbags
- 15" Lightweight Alloy Wheels
- Continuously Variable Transmission
- 160-Watt AM/FM/CD Audio System with 6 Speakers and MP3/Windows Media® Audio Playback Capability & Auxiliary Input Jack
- Automatic Climate Control with Air Filtration System
- Power Windows & Door Locks
- Body Coloured Heated Folding Power Door Mirrors with Integrated Turn Indicators
- USB Device Connector
- Keyless Remote Entry
- Exterior Temperature Indicator
- Trunk Mounted Lip Spoiler
- Digital Fuel Mileage Indicator
- Security System

Ask your Dealer for full details



Civic Hybrid's 1.3L i-VTEC® engine operates in tandem with a lightweight, high-output self-charging electric motor for extra fuel efficient power when needed. In some instances, the Hybrid can cruise on the electric motor alone.


ecoENERGY

**MOST FUEL-EFFICIENT
COMPACT 2010**



**TOP SAFETY PICK
SMALL CARS 2010**

What makes this Honda a Honda?



GO POWER

The Civic Hybrid's efficient engine is a marvel of low-friction engineering, generating ample horsepower while just sipping fuel.



FUEL FOR THOUGHT

15" lightweight alloy wheels and low rolling-resistance tires help Civic Hybrid deliver admirable city and highway mileage with low emissions.



HONDA



www.HondaOntario.com
Ontario Honda Dealers
THE **SMARTER** WAY TO BUY.

2010 *Insight*



The Insight is the world's first hybrid with Ecological Drive Assist to help you maximize fuel economy.

INSIGHT LX

- 1.3L 8-Valve SOHC i-VTEC® Engine with Integrated Motor Assist (IMA®)
- Continuously Variable Transmission
- 15" Steel Wheels with Full Covers
- 6 Airbag System
- Advanced Compatibility Engineering™ (ACE™) Body Structure
- Heated Folding Power Side Mirrors
- Automatic Climate Control with Air Filtration
- IMA® Charge Indicator / State of Battery Indicator
- EcoAssist™ Coaching Display
- Steering Wheel-Mounted Cruise Control
- Power Windows with Auto Up / Down Driver's Window
- 160-Watt AM/FM/CD Audio System with MP3 / Windows Media® Audio Playback Capability
- 60/40 Split Fold-Down Rear Seatback

\$25,430 MSRP*

INSIGHT EX

Adds to or replaces LX features with:

- Steering Wheel-Mounted Paddle Shifters
- 15" Lightweight Aluminum Alloy Wheels
- Vehicle Stability Assist (VSA®) with Traction Control
- Honda Satellite-Linked Navigation System™ with Bilingual Voice Recognition
- Bilingual Bluetooth® HandsFreeLink® Wireless Mobile Phone Interface

\$29,030 MSRP*

*All MSRPs include Freight and Fees



What makes this Honda a Honda?



DRIVE EFFICIENTLY

Pushing the Insight's dash-mounted ECON button modifies a range of vehicle systems – engine, transmission, braking, even air conditioning – to minimize overall energy use and maximize fuel economy.



FEEDBACK AS YOU DRIVE

The Insight's Ecological Drive Assist (Eco Assist™) System helps maximize fuel economy by providing real time feedback on fuel efficiency and teaching drivers how to improve driving habits to lower fuel costs even further.



HONDA



www.HondaOntario.com
Ontario Honda Dealers
 THE **SMARTER** WAY TO BUY.

*MSRP is \$25,430 / \$29,030 for a new 2010 Insight LX, model ZE2H5AE / 2010 Insight EX, model ZE2H7AG. Includes freight and PDI of \$1,395 A/C tax, and environmental and OMVIC fees. License, insurance, registration and taxes are extra. Retailer may sell for less. Retailer order / trade may be necessary. Subject to change or cancellation without notice. See your Honda retailer for full details.

2010 Accord SEDAN



Room, power, safety, comfort... enjoy no-compromise driving, plus sleek lines that invite second and third looks.

ACCORD LX SEDAN

- 2.4L 177hp 16-Valve DOHC i-VTEC® 4-Cylinder Engine
- 161 lb. ft. Torque @ 4,300 rpm
- Variable Gear Ratio (VGR) Steering
- Advanced Compatibility Engineering™ (ACE™) Body Structure
- Dual Chamber, Dual Threshold Front Airbags, Front Side Airbags with OPDS & Side Curtain Airbags
- Front Active Head Restraints
- Vehicle Stability Assist (VSA®) with Traction Control
- 4-Wheel ABS with Electronic Brake Distribution (EBD) and Brake Assist
- 160-Watt AM/FM/CD Audio System with 6 Speakers and MP3/Windows Media® Audio Playback Capability
- MP3 / Auxiliary Input Jack
- Air Conditioning with Air Filtration System

\$26,475 MSRP* OR \$27,675 MSRP*
5-Speed Automatic with Grade Logic Control

ACCORD EX SEDAN

Adds to or replaces LX features with:

NEW FOR '10...

- Dual Zone Automatic Climate Control with Air Filtration and Exterior Temperature Gauge
- 190hp 16-Valve DOHC i-VTEC® 4-Cylinder Engine
- 6-Disc In-Dash CD Changer with Anti-Theft
- Driver's Seat with 8-Way Power Adjustment

- Power Moonroof with Tilt Feature
- 17" Aluminum Alloy Wheels
- Security System
- Chrome Exhaust Finisher

\$30,175 MSRP*
5-Speed Automatic with Grade Logic Control

ACCORD EX-L SEDAN

Adds to or replaces EX features with:

- Multi-Reflector Halogen Headlights with Auto On/Off
- 270-Watt AM/FM/CD Premium Audio System with 6-Disc In-Dash CD Changer, 7 Speakers including Subwoofer and MP3/Windows Media® Audio Playback Capability
- XM® Satellite Radio with 3 Month Subscription
- Leather Trimmed Seating Surfaces with Heated Front Seats
- Leather Wrapped Steering Wheel

\$32,475 MSRP*
5-Speed Automatic with Grade Logic Control

ACCORD EX-L NAVI SEDAN

Adds to or replaces EX-L features with:

- Honda Satellite-Linked Navigation System™ with Bilingual Voice Recognition
- Bilingual Bluetooth® HandsFreeLink® Wireless Mobile Phone Interface

\$34,475 MSRP*
5-Speed Automatic with Grade Logic Control

ACCORD EX V6 SEDAN

Adds to or replaces EX features with:

- 3.5L 271hp 24-Valve SOHC i-VTEC® V6 Engine with Advanced Variable Cylinder Management™ (Advanced VCM™)
- 254 lb. ft. Torque @ 5,000 rpm

\$32,875 MSRP*
5-Speed Automatic with Grade Logic Control

ACCORD EX-L V6 SEDAN

Adds to or replaces EX-L and EX V6 features with:

- XM® Satellite Radio with 3 Month Subscription
- HomeLink® Remote Control System
- Front Fog Lights
- Passenger Seat with 4-Way Power Adjustment
- 270 Watt AM/FM/CD Premium Audio System with 6-Disc In-Dash CD Changer and 7 Speakers including Subwoofer and MP3/Windows Media® Audio Playback Capability

\$36,075 MSRP*
5-Speed Automatic with Grade Logic Control

ACCORD EX-L V6 NAVI SEDAN

Adds to or replaces EX-L V6 features with:

- Honda Satellite-Linked Navigation System™ with Bilingual Voice Recognition
- Bilingual Bluetooth® HandsFreeLink® Wireless Mobile Phone Interface

\$38,075 MSRP*
5-Speed Automatic with Grade Logic Control

*All MSRPs include Freight and Fees

What makes this Honda a Honda?



INTELLIGENT POWER

The available V6 engine, with Advanced Variable Cylinder Management™, can deactivate 2 or 3 cylinders for optimum fuel efficiency.



Car and Driver's "10Best"
13 years in a row! 2010
caranddriver.com



HONDA



www.HondaOntario.com
Ontario Honda Dealers
THE SMARTER WAY TO BUY.

*MSRP is \$26,475 / \$27,675 / \$30,175 / \$32,475 / \$34,475 / \$32,875 / \$36,075 / \$38,075 for a new 2010 Accord LX Sedan, model CP2E3AE / 2010 Accord LX Sedan Automatic, model CP2F3AE / 2010 Accord EX Automatic, model CP2F7AJ / 2010 Accord EX-L Sedan Automatic, model CP2F8AJN / 2010 Accord EX-L Sedan Automatic Navi, model CP2F8AKN / 2010 Accord EX V6 Sedan Automatic, model CP3F7AJX / 2010 Accord EX-L V6 Sedan Automatic, model CP3F8AJNX / 2010 Accord EX-L V6 Sedan Automatic Navi, model CP3F8AKNX. Includes freight and PDI of \$1,550, A/C tax, and environmental and OMVIC fees. License, insurance, registration and taxes are extra. Retailer may sell for less. Retailer order / trade may be necessary. Subject to change or cancellation without notice. See your Honda retailer for full details.

2010 Accord COUPE



*Bold, beautiful, powerful and efficient.
The sultry Accord Coupe delivers an exceptional driving experience.*

ACCORD EX COUPE NEW FOR '10...

- Dual Zone Automatic Climate Control with Air Filtration and Exterior Temperature Gauge

Plus...

- 2.4L 190hp 16-Valve DOHC i-VTEC® 4-Cylinder Engine
- 162 lb. ft. Torque @ 4,400 rpm
- Advanced Compatibility Engineering™ (ACE™) Body Structure
- Front Active Head Restraints
- Vehicle Stability Assist (VSA®) with Traction Control
- 4-Wheel Anti-Lock Braking System with Electronic Brake Distribution (EBD) and Brake Assist
- 17" Aluminum Alloy Wheels
- Remote Entry System
- 270-Watt AM/FM/CD Premium Audio System with 6-Disc In-Dash CD Changer, 7 Speakers including Subwoofer and MP3/Windows Media® Audio Playback Capability
- MP3 / Auxiliary Input Jack
- Power Moonroof with Tilt Feature
- Variable Gear Ratio (VGR) Steering
- Drive-by-Wire Throttle System™
- Front, Side and Side Curtain Airbags
- Cruise Control with Steering Wheel-Mounted Controls

\$29,475 MSRP* OR **\$30,675 MSRP***
5-Speed Automatic with Grade Logic Control

ACCORD EX-L COUPE

Adds to or replaces EX features with:

- Multi-Reflector Halogen Headlights with Auto-On/Off
- Leather Trimmed Seating with Heated Front Seats
- 8-Way Power Driver's Seat with Power Lumbar Support
- Exterior Temperature Indicator
- XM® Satellite Radio with 3 Month Subscription
- Leather Wrapped Steering Wheel

\$31,775 MSRP* OR **\$32,975 MSRP***
5-Speed Automatic with Grade Logic Control

ACCORD EX-L NAVI COUPE

Adds to or replaces EX-L features with:

- Honda Satellite-Linked Navigation System™ with Bilingual Voice Recognition
- Bilingual Bluetooth® HandsFreeLink® Wireless Mobile Phone Interface

\$33,775 MSRP* OR **\$34,975 MSRP***
5-Speed Automatic with Grade Logic Control

ACCORD EX-L V6 6-SPEED COUPE

Adds to or replaces EX-L features with:

- 3.5L 271hp 24-Valve SOHC VTEC® V6 Engine
- 6-Speed Manual Transmission
- 251 lb. ft. Torque @ 5,000 rpm

Plus...

- 18" Alloy Wheels
- Fog Lights
- Chrome Door Handles
- Rear Decklid Spoiler
- Dual Exhaust with Chrome Finishers

\$36,575 MSRP*

ACCORD EX-L V6 COUPE

Adds to or replaces EX-L 6-Speed V6 features with:

- 3.5L 271hp 24-Valve SOHC i-VTEC® V6 Engine
- Advanced Variable Cylinder Management™ (Advanced VCM™)
- 5-Speed Automatic Transmission with Grade Logic Control
- Active Noise Cancellation™ (V6 AT only)
- 254 lb. ft. Torque @ 5,000 rpm

\$36,575 MSRP*

ACCORD EX-L V6 NAVI COUPE

Adds to or replaces EX-L V6 6-Speed manual or 5-Speed automatic features with:

- Honda Satellite-Linked Navigation System™ with Bilingual Voice Recognition
- Bilingual Bluetooth® HandsFreeLink® Wireless Mobile Phone Interface

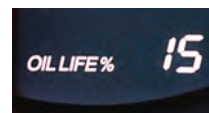
\$38,575 MSRP* OR **\$38,575 MSRP***
5-Speed Automatic with Grade Logic Control 6-Speed Manual Transmission

What makes this Honda a Honda?



DRIVING DELIGHT

The Accord Coupe's smooth signature ride has been enhanced by a high-mount, sport-tuned, double-wishbone suspension, making it more stable and responsive.



ON-BOARD VALET

With your busy life, it's easy to overlook an oil change or other service needs. Your Accord's Maintenance Minder keeps track of the details, letting you know when to schedule service



HONDA

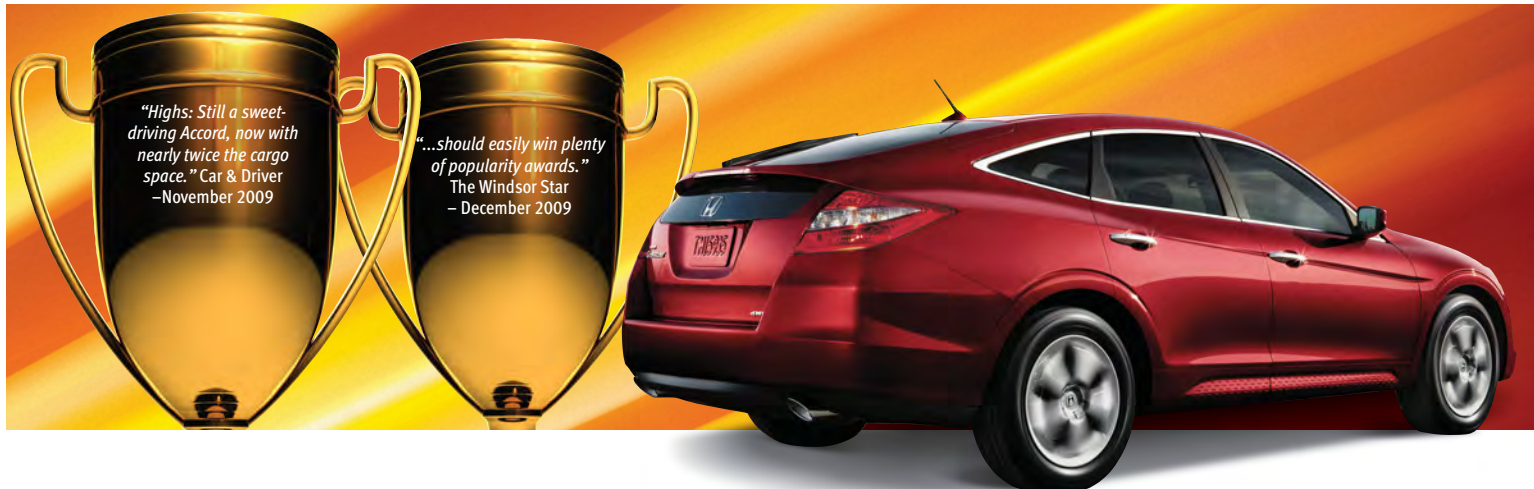
*All MSRPs include Freight and Fees

www.HondaOntario.com
Ontario Honda Dealers
THE SMARTER WAY TO BUY.

*MSRP is \$29,475 / \$30,675 / \$31,775 / \$32,975 / \$33,775 / \$34,975 / \$36,575 / \$36,575 / \$38,575 / \$38,575 for a new 2010 Accord EX Coupe, model CS1A7AJ / 2010 Accord EX Coupe Automatic, model CS1B7AJ / 2010 Accord EX-L Coupe, model CS1A8AJN / 2010 Accord EX-L Coupe Automatic, model CS1B8AJN / 2010 Accord EX-L Coupe Navi, model CS1A8AKN / 2010 Accord EX-L Coupe Automatic Navi, model CS1B8AKN / 2010 Accord EX-L V6 Coupe 6-Speed, model CS2A8AJN / 2010 Accord EX-L V6 Coupe Automatic, model CS2B8AJN / 2010 Accord EX-L V6 Coupe 6-Speed Navi, model CS2A8AKN / 2010 Accord EX-L V6 Coupe Automatic Navi, model CS2B8AKN. Includes freight and PDI of \$1,550, A/C tax, and environmental and OMVIC fees. License, insurance, registration and taxes are extra. Retailer may sell for less. Retailer order / trade may be necessary. Subject to change or cancellation without notice. See your Honda retailer for full details.



2010 Accord Crosstour



In performance, comfort, ride quality and cargo space, the all-new Crosstour is one big surprise after another.

The all-new Crosstour offers one surprise after another. Like the eye-opening new style with subtleties that only a walk-around reveals. And the ride: amazingly smooth and quiet. With standard Advanced Variable Cylinder Management™, the Crosstour is surprisingly fuel efficient. In back, the space and utility is simply incredible: the removable cargo bin is just one example. Put simply, the innovative Accord Crosstour must be seen and driven to be appreciated.

ACCORD CROSSTOUR EX-L 2WD

- 3.5L 271hp 24-Valve SOHC i-VTEC® V6 Engine
- 5-Speed Automatic Transmission with Grade Logic Control
- Advanced Variable Cylinder Management™ (Advanced VCM™)
- 18" Aluminum Alloy Wheels
- Dual Chamber, Dual Threshold Front Airbags, Front Side Airbags with OPDS & Side Curtain Airbags
- Vehicle Stability Assist (VSA®) with Traction Control
- Advanced Compatibility Engineering™ (ACE™) Body Structure
- Power Moonroof with Tilt Feature
- Heated Folding Power Door Mirrors
- Front Fog Lights
- Tire Pressure Monitoring System
- Remote Entry System with Power Window Control
- Steering Wheel-Mounted Cruise Control
- 8-Way Power Driver's Seat with Power Lumbar Support
- Heated Leather-Trimmed Seating Surfaces, Leather-Wrapped Steering Wheel
- Dual Zone Automatic Climate Control with Air Filtration and Exterior Temperature Gauge
- 60/40 Split Fold-Down Rear Seatback
- 360-Watt AM/FM/CD Premium Audio System with 6-Disc In-Dash CD Changer, 7 Speakers Including Subwoofer and MP3/Windows Media® Audio Playback Capability
- XM® Satellite Radio with 3 Month Subscription

- USB Device Connector
- Bilingual Bluetooth® HandsFreeLink® Wireless Mobile Phone Interface

\$36,585 MSRP*

ACCORD CROSSTOUR EX-L 4WD

Adds to or replaces EX-L 2WD features with:

- RealTime™ 4WD

\$38,585 MSRP*

ACCORD CROSSTOUR EX-L 4WD NAVI

Adds to or replaces EX-L 4WD features with:

- Honda Satellite-Linked Navigation System™ with Bilingual Voice Recognition, Rearview Camera and Steering Wheel-Mounted Controls

\$40,585 MSRP*

*All MSRPs include Freight and Fees

What makes this Honda a Honda?



SURPRISING STORAGE

Beneath the Crosstour's rear floor is a cargo storage space with a lift-out tray, especially helpful for muddy boots or wet items.



A GUIDING HAND

The available Navigation System pinpoints your location at the touch of a button. A rearview camera helps you navigate safely when backing up.



HONDA



www.HondaOntario.com
Ontario Honda Dealers
THE **SMARTER** WAY TO BUY.

*MSRP is \$36,585 / \$38,585 / \$40,585 for a new 2010 Accord Crosstour EX-L 2WD, model TF1H5AJN / 2010 Accord Crosstour EX-L 4WD, model TF2H5AJN / 2010 Accord Crosstour EX-L 4WD Navi, model TF2H5AKN. Includes freight and PDI of \$1,550, A/C tax, and environmental and OMVIC fees. License, insurance, registration and taxes are extra. Retailer may sell for less. Retailer order / trade may be necessary. Subject to change or cancellation without notice. See your Honda retailer for full details.

2010 CR-V



Refreshed styling, added horsepower and improved fuel economy – just a few reasons you'll love the new CR-V.

CR-V LX 2WD NEW FOR '10...

- 2.4L 180hp 16-Valve DOHC i-VTEC® Engine
- Freshly Restyled Front Grille, Bumper and Resculpted Hood
- Refined Interior Trim
- 17" Aluminum Alloy Wheels

Plus...

- 5-Speed Automatic Transmission with Grade Logic Control
- 4-Wheel Anti-Lock Braking System (ABS) with Electronic Brake Distribution (EBD)
- Advanced Compatibility Engineering™ (ACE™) Body Structure
- Front, Side & Side Curtain Airbags
- Front Active Head Restraints
- Vehicle Stability Assist (VSA®) with Traction Control
- Tire Pressure Monitoring System
- Power Windows with Auto Up/Down Driver's Window
- Air Conditioning with Air Filtration System
- Remote Entry System
- Steering Wheel-Mounted Cruise Control
- 160-Watt AM/FM/CD Audio System with 4 Speakers and MP3/Windows Media® Audio Playback Capability
- MP3 / Auxiliary Input Jack
- Underseat Storage Bin

\$28,015 MSRP*

CR-V LX 4WD

Adds to or replaces LX 2WD features with:

- RealTime™ 4WD

\$30,015 MSRP*

CR-V EX 2WD

Adds to or replaces LX 2WD features with:

NEW FOR '10...

- Dual Zone Automatic Climate Control System
- 8-Way Power Driver's Seat with Power Lumbar Support

Plus...

- Body Coloured Door Handles & Mirrors
- Auto On/Off Headlights
- USB Device Connector
- Power Moonroof with Tilt Feature
- Chrome Grille & Tailgate Garnish
- Dual-Deck Cargo Shelf
- Exterior Temperature Indicator
- Steering Wheel-Mounted Audio Controls
- Security System
- 160-Watt AM/FM/CD Audio System with 6-Disc In-Dash CD Changer and 6 Speakers, and MP3/Windows Media® Audio Playback Capability

\$31,215 MSRP*

CR-V EX 4WD

Adds to or replaces EX 2WD features with:

- RealTime™ 4WD

\$33,215 MSRP*

CR-V EX-L 4WD

Adds to or replaces EX 4WD features with:

NEW FOR '10...

- XM® Satellite Radio with 3 Month Subscription

Plus...

- 270-Watt AM/FM/CD Premium Audio System with 6-Disc In-Dash CD Changer, Digital Audio Card Reader, 7 Speakers including Subwoofer and MP3/Windows Media® Audio Playback Capability
- Leather Trimmable Seating with Heated Front Seats
- Leather Wrapped Steering Wheel & Shift Knob

\$35,215 MSRP*

CR-V EX-L 4WD NAVI

Adds to or replaces EX-L 4WD features with:

- Honda Satellite-Linked Navigation System™ with Bilingual Voice Recognition, Steering Wheel-Mounted Controls & Rearview Camera
- Bilingual Bluetooth® HandsFreeLink® Wireless Mobile Phone Interface

\$37,315 MSRP*

*All MSRPs include Freight and Fees

What makes this Honda a Honda?



LOAD IT UP

Available on EX and above models, the CR-V's Dual-Deck Cargo Shelf expands your cargo options. There's also an underseat storage bin to help keep valuables hidden.



GRIPPING PERFORMANCE

CR-V's available RealTime™ 4WD delivers extra traction when you need it—automatically. When added grip isn't needed, the system reverts to 2-wheel drive to extend fuel efficiency.



HONDA



**Lowest Five Year
Ownership Costs – 2009**

www.HondaOntario.com
Ontario Honda Dealers
THE **SMARTER** WAY TO BUY.

*MSRP is \$28,015 / \$30,015 / \$31,215 / \$33,215 / \$35,215 / \$37,315 for a new 2010 CR-V LX 2WD Automatic, model RE3H3AEY / 2010 CR-V LX 4WD Automatic, model RE4H3AEY / 2010 CR-V EX 2WD, model RE3H5AJ / 2010 CR-V EX 4WD Automatic, model RE4H5AJ / 2010 CR-V EX-L 4WD Automatic, model RE4H7AJN / 2010 CR-V EX-L 4WD Automatic Navi, model RE4H7AKN. Includes freight and PDI of \$1,590, A/C tax, and environmental and OMVIC fees. License, insurance, registration and taxes are extra. Retailer may sell for less. Retailer order / trade may be necessary. Subject to change or cancellation without notice. See your Honda retailer for full details.



2010 *Element*



*Whatever you're into – hiking, biking, boarding or climbing –
Element is ready for any adventure whenever you are.*

ELEMENT LX 2WD

- 2.4L 166hp i-VTEC® 4-Cylinder Engine
- Larger Wraparound Headlamps & Restyled Front Bumper
- New Rear Taillights
- Variable Intermittent Windshield Wipers
- Front & Rear Splash Guards
- Steering Wheel-Mounted Cruise Control
- Standard 5-Speed Automatic Transmission with Grade Logic Control
- 4-Wheel Anti-Lock Braking System (ABS) with Electronic Brake Distribution (EBD)
- Vehicle Stability Assist (VSA®) with Traction Control
- Front, Side & Side Curtain Airbags
- Remote Entry System
- Air Conditioning with Air Filtration System
- AM/FM/CD Audio System with 4 Speakers
- Water-Resistant FXC™ (Fabric for Extreme Conditions) on Front Seats
- Urethane Coated Utility Floor
- 64 Seating Configurations

\$28,715 MSRP*

ELEMENT EX 4WD

Adds to or replaces LX 2WD features with:

- Exterior Temperature Indicator
- Overhead Storage Console
- XM® Satellite Radio with 3 Month Subscription
- Removable Centre Storage Cooler
- RealTime™ 4-Wheel Drive
- 16" Alloy Wheels
- 270-Watt AM/FM/CD Audio System with 7 Speakers including Subwoofer and MP3/Windows Media® Audio Playback Capability
- MP3 / Auxiliary Input Jack
- Steering Wheel-Mounted Audio Controls

\$33,815 MSRP*

ELEMENT SC

Adds to or replaces EX 4WD features with:

- Unique Exterior and Interior Styling
- Body Coloured Molding Panels
- Centre Console with Armrest
- Front Wheel 2WD
- Sport Tuned Suspension with Lower Ride Height
- 18" Aluminum Alloy Wheels
- Exclusive Front Grille
- Carpeted Floor (1st & 2nd rows)

\$33,415 MSRP*

*All MSRPs include Freight and Fees



**Top Safety Pick 2010
Small SUV**

What makes this Honda a Honda?



STRETCH OUT AND RELAX

The Element's wide open interior can function as a hang-out spot or sleeping quarters. Plus, 64 seating configurations let you load, move or carry practically anything.



WELL PROTECTED

The Element's occupant protection system includes a solid unibody frame and a reinforced rigid safety cell, with high-tensile steel and numerous cross braces.



HONDA



**Lowest Five Year
Ownership Costs
Compact SUVs 2009**



www.HondaOntario.com
Ontario Honda Dealers
THE **SMARTER** WAY TO BUY.

*MSRP is \$28,715 / \$33,815 / \$33,415 for a new 2010 Element LX 2WD, model YH1H3AE / 2010 Element EX 4WD, model YH2H7AEX / 2010 Element SC, model YH1H9AE. Includes freight and PDI of \$1,590, A/C tax, and environmental and OMVIC fees. License, insurance, registration and taxes are extra. Retailer may sell for less. Retailer order / trade may be necessary. Subject to change or cancellation without notice. See your Honda retailer for full details.

2010 Odyssey



*Driving to work, school, the grocery store or a hockey game,
Odyssey is a great fit for families on the move.*

ODYSSEY DX

- 3.5L 244hp 24-Valve SOHC VTEC® V6 Engine
- Drive-by-Wire Throttle System™
- 5-Speed Automatic Transmission with Grade Logic Control
- 4-Wheel Anti-Lock Braking System (ABS) with Electronic Brake Distribution (EBD) & Brake Assist
- Front Independent & Rear Double-Wishbone Independent Suspension
- Advanced Compatibility Engineering™ (ACE™) Body Structure
- Driver and Passenger Front and Side Airbags and 3-Row Side Curtain Airbags with Rollover Sensor
- Front Active Head Restraints
- Tire Pressure Monitoring System
- AM/FM/CD Audio System with 4 Speakers and MP3/Windows Media® Audio Playback Capability
- MP3/Auxiliary Input Jack
- Power Front Windows with Auto-Up/Down Driver's Window
- One Motion 60/40 Split 3rd Row Magic Seat®
- Air Conditioning with 2nd Row Manual HVAC Controls

\$33,415 MSRP*

NHL® ODYSSEY SE NEW FOR '10...

- Honda DVD Rear Entertainment System with 9" Display, Integrated Remote Control and Wireless Headsets with Personal Surround Sound
- NHL "All Access" DVD
- \$150 Gift Certificate for Shop.NHL.com
- 115-Volt Power Outlet
- Unique NHL Shield Chrome Crest

Plus...

- Seating for 8
- Body Coloured Side Molding
- Roof Rails
- Tinted Glass
- 16" Aluminum Alloy Wheels
- Power Sliding Doors
- 120 Watt AM/FM/CD Audio System with 6-Disc In-Dash CD Changer
- 8-Way Power Driver's Seat

\$39,515 MSRP*

ODYSSEY EX-L

Adds to or replaces SE features with:

- 3.5L 244hp 24-Valve SOHC i-VTEC® V6 Engine
- Advanced Variable Cylinder Management™ (Advanced VCM™)
- Power Moonroof with Tilt Feature
- Leather Trimmed Interior with Heated Front Seats
- Leather Wrapped Steering Wheel & Shift Knob
- Power Tailgate
- XM® Satellite Radio with 3 Month Subscription

\$43,115 MSRP*

ODYSSEY EX-L with Rear Entertainment System (RES)

Adds to or replaces EX-L features with:

- Honda DVD Rear Entertainment System with 9" Display, Integrated Remote Control and Wireless Headsets with Personal Surround Sound

\$45,015 MSRP*

ODYSSEY TOURING

Adds to or replaces EX-L RES features with:

- 17" Aluminum Alloy Wheels
- Auto On/Off Headlights
- Honda Satellite-Linked Navigation System™ with Bilingual Voice Recognition
- Rearview Camera
- Bilingual Bluetooth® HandsFreeLink® Wireless Mobile Phone Interface
- Power Adjustable Pedals
- 2 Position Driver's Memory Seat
- Body Coloured Front & Rear Parking Sensors
- Multi-Information Display

\$51,415 MSRP*

*All MSRPs include Freight and Fees

What makes this Honda a Honda?



ACE™ BODY STRUCTURE

Solid frame structure with high-tensile steel and numerous cross braces to help stop cabin deformation in the event of a collision.



ROOM FOR 8 PEOPLE

With the available handy 2nd row Plus One Seat™, no one is left behind. It also reclines and is easily removable.



HONDA



www.HondaOntario.com
Ontario Honda Dealers
THE **SMARTER** WAY TO BUY.

*MSRP is \$33,415 / \$39,515 / \$43,115 / \$45,015 / \$51,415 for a new 2010 Odyssey DX, model RL3H1AE / 2010 Honda NHL® Odyssey SE, model RL3H5AE / 2010 Odyssey EX-L, model RL3H6AJ / 2010 Odyssey EX-L RES, model RL3H7AJ / 2010 Odyssey EX-L Touring, model RL3H8AK. Includes freight and PDI of \$1,590, A/C tax, and environmental and OMVIC fees. License, insurance, registration and taxes are extra. Retailer may sell for less. Retailer order / trade may be necessary. Subject to change or cancellation without notice. See your Honda retailer for full details.

2010 Pilot



*Recreation gear, tools, home improvement supplies, and up to 8 occupants.
Everything fits in the Pilot.*

PILOT LX 2WD

- 3.5L 250hp 24-Valve SOHC i-VTEC® V6 Engine with Advanced Variable Cylinder Management™ (Advanced VCM™)
- 17" Alloy Wheels
- 135-Watt AM/FM/CD Audio System with 7 Speakers including Subwoofer and MP3/Windows Media® Audio Playback Capability
- MP3 / Auxiliary Input Jack
- Advanced Compatibility Engineering™ (ACE™) Body Structure
- Front Active Head Restraints
- Flip-Up Tailgate Glass
- Hill Start Assist
- Integrated Trailer Hitch
- Automatic On / Off Headlights
- Vehicle Stability Assist (VSA®) with Traction Control
- Drive-by-Wire Throttle System™
- Independent Front & Rear Suspension
- 3,505 lb. (1,590 kg) Towing Capacity
- 4-Wheel Anti-Lock Brakes (ABS) with Electronic Brake Distribution (EBD) and Brake Assist
- Front, Side & Side Curtain Airbags with Rollover Sensor
- Tire Pressure Monitoring System
- Front & Rear Air Conditioning System
- Steering-Wheel Mounted Cruise Control
- Power Windows and Power Heated Folding Side Mirrors
- Remote Entry System
- 8 Passenger Seating

\$38,545 MSRP*

PILOT LX 4WD

Adds to or replaces LX 2WD features with:

- Variable Torque Management™ 4-Wheel Drive System (VTM-4®)
- 4,508 lb. (2,045 kg) Towing Capacity

\$41,545 MSRP*

PILOT EX 4WD

Adds to or replaces LX 4WD features with:

- 155-Watt AM/FM/CD Audio System with 6-Disc In-Dash CD Changer
- Ambient Console Lighting
- Body Coloured Door Handles & Heated Side Mirrors
- 8-Way Power Driver's Seat with Power Lumbar Support
- Exterior Temperature Indicator
- Heated Front Seats
- Illuminated Steering Wheel-Mounted Audio Controls
- Tri-Zone Automatic Climate Control
- Security System
- Fog Lights

\$44,445 MSRP*

PILOT EX-L 4WD

Adds to or replaces EX 4WD features with:

- Leather Trimmed Interior
- Leather Wrapped Steering Wheel and Shift Knob
- Power Moonroof with Tilt Feature
- Reverse Camera with Display in Rearview Mirror
- XM® Satellite Radio with 3 Month Subscription
- Passenger Seat with 4-Way Power Adjustment

- Auto-Dimming Rear View Mirror
- Conversation Mirror

\$46,745 MSRP*

PILOT EX-L 4WD with Rear Entertainment System (RES)

Adds to or replaces EX-L 4WD features with:

- DVD Rear Entertainment System with 9" Display, Integrated Remote Control and Wireless Headsets with Personal Surround Sound
- 115-Volt Power Outlet
- 512-Watt AM/FM/CD Premium Audio System with 6-Disc In-Dash CD Changer and 10 Speakers including Subwoofer, and MP3/Windows Media® Audio Playback Capability

\$48,345 MSRP*

PILOT TOURING 4WD

Adds to or replaces EX-L 4WD RES features with:

- Bilingual Bluetooth® HandsFreeLink® Wireless Mobile Phone Interface
- Heated 2nd Row Seats (Outboard positions only)
- Honda Satellite-Linked Navigation System™ with Bilingual Voice Recognition and Rearview Camera
- Power Tailgate
- Parking Sensors
- Memory Seats
- Multi Information Display
- USB Device Connector
- Wired for Trailer Connection

\$52,145 MSRP*

*All MSRPs include Freight and Fees

What makes this Honda a Honda?



STAY COOL

Pilot's engine can deliver top performance under heavy load conditions. Plus, heavy duty automatic transmission and power steering coolers are standard.



READY TO TOW

Every Pilot comes with an integrated trailer hitch as standard equipment.



HONDA



www.HondaOntario.com
Ontario Honda Dealers
THE **SMARTER** WAY TO BUY.

*MSRP is \$38,545 / \$41,545 / \$44,445 / \$46,745 / \$48,345 / \$52,145 for a new 2010 Pilot LX 2WD, model YF3H2AEY / 2010 Pilot LX 4WD, model YF4H2AE / 2010 Pilot EX 4WD, model YF4H4AE / 2010 Pilot EX-L 4WD, model YF4H5AJN / 2010 Pilot EX-L 4WD RES, model YF4H6AJN / 2010 Pilot Touring 4WD, model YF4H9AKN. Includes freight and PDI of \$1,590, A/C tax, and environmental and OMVIC fees. License, insurance, registration and taxes are extra. Retailer may sell for less. Retailer order / trade may be necessary. Subject to change or cancellation without notice. See your Honda retailer for full details.

2010 Ridgeline



When the going gets tough, Ridgeline puts a truckload of innovations and advantages to work for you.

RIDGELINE DX

- 3.5L 250hp 24-Valve SOHC VTEC® V6 Engine
- 247 lb. ft. Torque @ 4,300 rpm
- Integrated Trailer Hitch
- Front Active Head Restraints
- Camshaft Profile for Maximum Torque
- Ultra-Lightweight Magnesium Dual Stage Intake Manifold
- Variable Torque Management™ 4-Wheel Drive System (VTM-4®)
- 4-Wheel Independent Suspension
- 5,000 lb. (2,268 kg) Towing Capacity, 1,554 lb. (690 kg) Payload Capacity
- Boxed Ladder Frame with Honda's Unique Steel Body Structure
- Lockable In-Bed Trunk™
- Dual-Action Tailgate™
- Heavy Duty Power Steering Cooler and Transmission Cooler
- Power Sliding Rear Cabin Window
- Heated Folding Power Side Mirrors
- Driver and Passenger Front Airbags, Side Airbags and Side Curtain Airbags with Rollover Sensor
- Vehicle Stability Assist (VSA®) with Traction Control
- Remote Entry System
- Air Conditioning with Air Filtration System
- 100-Watt AM/FM/CD Audio System with 6 Speakers and MP3/Windows Media® Audio Playback Capability

\$36,715 MSRP*

RIDGELINE VP

Adds to or replaces DX features with:

- 17" Aluminum Alloy Wheels
- Fog Lights
- Body Coloured Door Handles
- Body Coloured Heated Folding Power Side Mirrors
- Auxiliary Input Jack
- Privacy Glass
- Rearview Mirror with Compass

\$38,415 MSRP*

RIDGELINE EX-L

Adds to or replaces VP features with:

- 18" Aluminum Alloy Wheels
- Leather Trimmed Interior with Heated Front Seats
- 8-Way Power Driver's Seat
- Leather Wrapped Steering Wheel
- Power Moonroof with Tilt Feature
- Dual Zone Automatic Climate Control with Air Filtration
- 160-Watt AM/FM/CD Audio System with 6-Disc In-Dash CD Changer, 7 Speakers including Subwoofer and MP3/Windows Media® Audio Playback Capability
- Illuminated Steering Wheel-Mounted Audio Controls
- XM® Satellite Radio with 3 Month Subscription
- Security System
- 115-Volt Power Outlet

\$43,215 MSRP*

RIDGELINE EX-L NAVI

Adds to or replaces EX-L features with:

- Honda Satellite-Linked Navigation System™ with Bilingual Voice Recognition
- Rearview Camera
- Bilingual Bluetooth® HandsFreeLink® Wireless Mobile Phone Interface

\$45,415 MSRP*

*All MSRPs include Freight and Fees



**Standard Pickup
Winner 2009
strategicvision.com**

What makes this Honda a Honda?



STOW IT BELOW

Hidden away beneath the bed, Ridgeline's lockable, weatherproof In-Bed Trunk™ is ideal for storing tools, sports gear or valuables securely.



STRONG AND QUIET

The integrated closed-box frame with unit-body construction minimizes the squeaks and rattles typical of body-on-frame trucks.



HONDA



www.HondaOntario.com
Ontario Honda Dealers
THE **SMARTER** WAY TO BUY.

*MSRP is \$36,715 / \$38,415 / \$43,215 / \$45,415 for a new 2010 Ridgeline DX, model YK1F4AEZ / 2010 Ridgeline VP, model YK1F5AEZ / 2010 Ridgeline EX-L, model YK1F5AJNZ / 2010 Ridgeline EX-L Navi, model YK1F5AKNZ. Includes freight and PDI of \$1,590, A/C tax, and environmental and OMVIC fees. License, insurance, registration and taxes are extra. Retailer may sell for less. Retailer order / trade may be necessary. Subject to change or cancellation without notice. See your Honda retailer for full details. Specifications, features, illustrations and equipment shown in this catalogue are based on the latest available information at the time of publication. Although descriptions are believed to be correct, accuracy cannot be guaranteed. Honda Canada Inc. reserves the right to make changes at any time in colours, specifications, accessories, materials and models, without notice or obligation.