

KL

2022

*stinger*

**DEP**  
DEALER ePROCESS

AN EPIC GT  
FOR EPIC JOURNEYS AHEAD.



DEALER ePROCESS

**DEP**  
DEALER ePROCESS

GT2 SHOWN

# THERE'S ONLY ONE WAY TO GET TO AMAZING.

The way we see it, no one ever said, give it a bit. No one ever said, give it less. The world was not built by half-measures, or the half-hearted. So here's to going all in, and all out. Embracing all that's possible, now and tomorrow. With more heart, more vision, and more purpose. Whether you're building a car, or building a life. For those who share this relentless spirit, we created the 2022 Stinger. Designed to fuel your passion for the open road, and all the adventures that await you there.

**DEP**  
DEALER ePROCESS

Tied in 2020. For J.D. Power 2020 award information, go to [jdpower.com/awards](https://www.jdpower.com/awards). GT2 SHOWN



#1 MASS MARKET BRAND IN  
INITIAL QUALITY, 6 YEARS IN A ROW

# WE DARED TO GO THERE.

What's possible when you're free to create the car of your dreams with legendary design and performance engineers, and no limits? The answer is the 2022 Stinger, a modern GT sports sedan that drives as good as it looks. With an available 368-horsepower,<sup>1</sup> 3.3L Twin Turbo V6 engine.\* The latest advanced driver-assistance technologies. An elegant, premium feature-filled cabin. And a stunning design that pays its respects to the GT classics of the past, while asserting itself as an icon going forward.



\*Optional feature available only on certain trims. See [kia.com](http://kia.com) for details.  
1 See last page for endnote. GT2 SHOWN

**DEP**  
DEALER ePROCESS

# GUTS AND GRACE: THE NEW 2.5L TURBO.

Stinger's GT-Line trim features an all-new 2.5L turbocharged Gasoline Direct Injection 4-cylinder engine that unleashes 300 horsepower<sup>1</sup> and 311 lb.-ft. of torque, paired with a uniquely optimized 8-speed Automatic Transmission. The result? A 0–60 time of 5.3 seconds, along with outstanding overall power and seamless shifting, for an incredible driving experience.<sup>†</sup>

**REAR-WHEEL DRIVE OR ALL-WHEEL DRIVE (AWD)<sup>†</sup>**  
are both tuned to give you maximum driving thrills, with AWD<sup>†</sup> available on any Stinger trim

**ISO-STRUCTURE™**  
is made with 55% advanced High Tensile Steel to help improve rigidity in a variety of circumstances — which means you'll enjoy better driving dynamics and a quiet ride

**FIVE DRIVE MODE SELECTIONS**  
adjust steering boost, shift points, and throttle mapping to give you a choice of five unique drive modes: Smart, ECO, Comfort, Sport, or Custom

<sup>1</sup> See last page for endnote. <sup>†</sup>Performance estimates determined by Kia for Stinger GT-Line using Launch Control. Premium gasoline required. Actual results may vary depending on options, driving habits, and vehicle condition. Verification of these results should not be attempted. Always drive safely and obey all traffic laws.

<sup>†</sup>No system, no matter how advanced, can compensate for all driver error and/or driving conditions. Always drive safely. Do not attempt. Professional stunt driver used. Added smoke shown. GT-LINE SHOWN



# EXTRA VENOM: THE 3.3L TWIN TURBO V6.

Stinger's available 368-horsepower,<sup>1</sup> 3.3L Twin Turbo V6\* has a 0-60 time of 4.7 seconds and a top speed of 167 mph.<sup>†</sup> It's quicker than the 2021 Audi A7 Sportback AWD and Porsche Panamera V6 RWD.<sup>‡</sup> And everything, from its wheel housings to sleek, aerodynamic trunk lid, has been ingeniously engineered to cheat the wind for incredible stability at higher speeds, and supreme comfort on the open road.

#### LAUNCH CONTROL SYSTEM

maximizes off-the-line response for quick acceleration<sup>^</sup>

#### ELECTRONICALLY CONTROLLED SUSPENSION\*

is designed to give you the ride you want, from Comfort to Sport, by adapting the suspension of the car to the driving conditions

#### MECHANICAL LIMITED-SLIP DIFFERENTIAL\*

helps to evenly distribute power through the rear wheels, resulting in more responsive and agile handling<sup>^</sup>

#### SPORT VARIABLE GEAR RATIO STEERING\*

increases steering responsiveness during spirited driving to elevate your driving experience<sup>^</sup>

#### ELECTRONIC VARIABLE EXHAUST VALVE\*

creates a deeper, throatier exhaust tone when driving in Sport mode



**DEP**  
DEALER ePROCURE

\*Optional feature available only on certain trims. See [kia.com](http://kia.com) for details. <sup>1</sup> See last page for endnote. <sup>†</sup>Performance estimates determined by Kia for Stinger GT rear-wheel drive using Launch Control and factory-equipped with 19-inch wheels. Premium gasoline required. Actual results may vary depending on options, driving habits, and vehicle condition. Verification of these results should not be attempted. Always drive safely and obey all traffic laws. <sup>‡</sup>Based on published manufacturer specifications as of November 2020. <sup>^</sup>No system, no matter how advanced, can compensate for all driver error and/or driving conditions. Always drive safely. GT2 SHOWN

# BRAKES BORN ON THE TRACK.

Look behind the GT's 19-inch wheels and you'll find vented Brembo® brakes\* — the same brand found on some of the most prestigious cars of the last 40 years. They help give you outstanding deceleration performance and precise handling in a variety of conditions.†

## **BREMBO® HIGH-PERFORMANCE BRAKES\***

on the V6 Twin Turbo GT trims feature signature red, fixed quad-piston front calipers and dual-piston rear calipers. Larger overall brake rotors than the 2021 Audi A7 Sportback† help provide more consistent braking performance†

## **BRAKE ASSIST SYSTEM**

is designed to sense the urgency if you suddenly slam on your brakes, and apply full braking power, which can help shorten your braking distance†

## **ELECTRONIC BRAKE-FORCE DISTRIBUTION**

is engineered to detect the vehicle's weight distribution, and adjust the balance of braking power accordingly†

## **BRAKE FADE COMPENSATION**

automatically increases hydraulic pressure in the braking system as the temperatures rise, so the driver does not need to press as hard on the pedal — resulting in a more consistent and confident braking feel†

\*Optional feature available only on certain trims. See [kia.com](http://kia.com) for details. †No system, no matter how advanced, can compensate for all driver error and/or driving conditions. Always drive safely. ‡Based on published manufacturer specifications as of November 2020. Image shown for illustration only. GT2 SHOWN

**DEP**  
DEALER ePROCESS

# GO WHERE YOU WANT, WHEN YOU WANT.

Stinger's advanced range of active safety features and technologies help combat slipping or skidding in challenging situations, helping you to face down slick roads and unexpected turns with confidence.†



#### **AVAILABLE FULLY ACTIVE AWD SYSTEM\*†**

helps deliver enhanced handling and stability under heavy cornering or on low-grip surfaces, for all-weather confidence. The Dynamic Torque Vectoring Control system works with the AWD system to monitor the drive and automatically apply power or braking to the front and rear wheels accordingly

#### **ELECTRONIC STABILITY CONTROL†**

is designed to help control the engine and brakes for improved directional stability in certain difficult driving situations

#### **VEHICLE STABILITY MANAGEMENT†**

can intervene to help enhance stability and steering responses when driving on some slippery roads

#### **TRACTION CONTROL SYSTEM†**

is designed to sense wheelspin during acceleration, and use a combination of engine power and brake force to help transfer power to the wheel that has more traction

#### **HILL-START ASSIST CONTROL†**

is engineered to assist you by automatically holding the brake pressure for two seconds when you take your foot off the brake pedal

**DEP**  
DEALER ePROCESS

\*Optional feature available only on certain trims. See [kia.com](http://kia.com) for details. †No system, no matter how advanced, can compensate for all driver error and/or driving conditions. Aftermarket snow tires (sold separately) are recommended for snowy or icy conditions. Always drive safely. GT2 AWD SHOWN



#### FORWARD COLLISION-AVOIDANCE ASSIST<sup>2</sup> DW

with pedestrian, cyclist detection, and junction turning can give visual and audible alerts, and even automatically apply the brakes, when the system detects a potential forward collision with a vehicle, person, or cyclist in front of you. It is also designed to detect oncoming vehicles in certain situations, like making a left turn at an intersection

#### NAVIGATION-BASED SMART CRUISE CONTROL<sup>2</sup> DW

is engineered to help maintain a safe distance from the vehicle detected in front, by adjusting your driving speed, and in some cases, completely stopping and resuming again. It is also designed to adapt to changing speed limits of select federal highways and upcoming curves that it detects through the Navigation system<sup>3</sup>

#### LANE KEEPING & FOLLOWING ASSIST<sup>2</sup> DW

can help alert you if it detects the vehicle getting close to visible lane markers, and apply corrective steering to help prevent you from drifting out of your marked lane. It can also help keep the vehicle centered in its lane by analyzing visible lane markings and information it detects from the vehicle ahead

#### BLIND-SPOT COLLISION-AVOIDANCE ASSIST<sup>2</sup> DW

is designed to help alert you to vehicles in your blind spot, and can even apply corrective braking to help you avoid some hazardous lane-change decisions

#### REAR CROSS-TRAFFIC COLLISION-AVOIDANCE ASSIST<sup>2</sup> DW

uses visual and audible alerts that can help warn of traffic coming from either side when you're in reverse, and can even automatically apply the brakes to help you avoid collisions

#### SAFE EXIT ASSIST<sup>2</sup> DW

can alert driver and passengers to potential hazards approaching from behind when exiting the vehicle, and has an active locking feature that can automatically activate the rear door locks until the hazard has passed

# A CUTTING-EDGE COPILOT.

Stinger is engineered with Kia Drive Wise, a suite of advanced driver-assistance technologies that are designed to help keep you alert, aware of surrounding traffic, and even intervene in certain situations to help you avoid collisions.<sup>2†</sup> For 2022, the technologies on this page come standard on all Stinger trims.



LOOK FOR THE  LABELS AHEAD 

<sup>†</sup>No system, no matter how advanced, can compensate for all driver error and/or driving conditions. Always drive safely. 2, 3 See last page for endnotes. GT2 SHOWN

# AHEAD OF THE CURVE, EVEN IN THE DARK.

Moonless nights, winding roads, and other nocturnal challenges are no match for Stinger's advanced illuminating technologies — each designed to help combat the rigors of nighttime driving and boost visibility in various conditions.

**DEP**  
DEALER ePROCESS

## LOW BEAM ASSIST — DYNAMIC<sup>2\*</sup> DW

headlights are designed to track with your steering angle and vehicle speed to help enhance directional lighting

## HIGH BEAM ASSIST<sup>4</sup> DW

is designed to automatically dim the high beams for oncoming vehicles the system detects, then return to high-beam setting once the vehicle passes

## LED PROJECTION HEADLIGHTS

on GT2 feature high-grade, bright, and powerful projection-type LED headlights, plus LED turn signals and signature LED Daytime Running Lights

## LED HEADLIGHTS

come standard and include LED multi-reflector headlights and rear LED tail lights

DW= **DRIVE  
WISE**

\*Optional feature available only on certain trims. See [kia.com](http://kia.com) for details. 2, 4 See last page for endnotes. GT2 SHOWN

# LOCATION IS EVERYTHING.

All of your technology, right where you need it — Stinger's screens are positioned to put you in command and keep key info near your line of sight.

## HEAD-UP DISPLAY<sup>5\*</sup> DW

projects a color readout of important info on the windshield

## BLIND-SPOT VIEW MONITOR<sup>2\*</sup> DW

activates a camera display, in the direction of your turn signal, within the Supervision meter cluster\* so you can see the vehicle in your blind spot

## SURROUND VIEW MONITOR<sup>2\*</sup> DW

uses four cameras to provide an aerial view around the vehicle while parking

## PARKING DISTANCE WARNING — FORWARD\* & REVERSE<sup>2</sup> DW

gives an audible warning if it detects certain objects close to your vehicle while parking

## REAR VIEW MONITOR WITH PARKING GUIDANCE<sup>2</sup> DW

includes a large, bright screen that helps you see what's behind your vehicle, with guidelines that adjust to follow the direction you're turning

**DEP**  
DEALER ePROCESS

DW= **DRIVE WISE**

\*Optional feature available only on certain trims. See [kia.com](http://kia.com) for details.  
2, 5 See last page for endnotes. Simulated screen shown. GT2 SHOWN

# EASY IN, EASY OUT OF TOWN.

## HIDDEN UNDER-FLOOR STORAGE COMPARTMENTS

include a tray with partitions for storing smaller, loose objects, along with a spare tire

## 60/40 SPLIT-FOLDING REAR SEATS

can accommodate a range of storage options and increase cargo space for added versatility

## MORE CARGO VOLUME

than the 2021 BMW 8-Series Gran Coupe and Porsche Panamera,<sup>†</sup> — meaning more space for luggage and other items needed for the perfect getaway

## SMART KEY

with sensors lets you perform various functions when you stand near the Stinger with the Smart Key in your hand, pocket, or bag — such as the features described below

## SMART WELCOME

turns on the perimeter and interior lights, and unfolds the power side mirrors to greet you

## SMART POWER TRUNK\*

is designed to automatically open after three seconds when you stand near your trunk, and close with a push of a button



**DEP**  
DEALER ePROCESS

\*Optional feature available only on certain trims. See [kia.com](http://kia.com) for details. All cargo should be evenly distributed, properly secured, and never piled higher than the seatback.  
<sup>†</sup>Based on published manufacturer specifications as of November 2020. GT2 SHOWN

# OBSESSED WITH DETAILS.

Stinger's cabin is exquisitely crafted, with meticulous care put into every stitch and seam to ensure the highest attention to detail. The hand-stitched leather steering wheel is finished with a diamond-shaped pattern that requires extra time and experience to execute. Everything you touch, see, and feel will move you, even before you start the engine.

Image shown for illustration only.

**DEP**  
DEALER ePROCESS



**NAPPA LEATHER-TRIMMED SEATS\***

are deeply contoured for added luxury and comfort, and feature an all-new Chain-volume design inspired by luxury metal watch bands

**HEATED<sup>6</sup> & VENTILATED SEATS\***

include standard heated front seats,<sup>6</sup> and optional heated rear outboard<sup>6\*</sup> and ventilated front seats\*

**16-WAY POWER-ADJUSTABLE DRIVER'S SEAT\***

includes width-adjusting power side bolsters, seat extension, and 4-way lumbar support for optimal comfort

**INTEGRATED MEMORY SYSTEM\***

remembers the setting preferences for two drivers, including the position of the seat, steering wheel, and side mirrors

**ABUNDANT LEGROOM**

comes courtesy of Stinger's generous wheelbase, which is longer than the 2021 BMW 4-Series Gran Coupe and 2021 Audi A5 Sportback<sup>†</sup> — giving Stinger a very spacious interior

**DEP**  
DEALER ePROCESS

**A HIGH-END CABIN WITH  
HIGH-END COMFORT.**

\*Optional feature available only on certain trims. See [kia.com](http://kia.com) for details. <sup>6</sup> See last page for endnote. <sup>†</sup>Based on published manufacturer specifications as of November 2020. Simulated screen shown. GT2 SHOWN

# RELAX BEFORE THE ADRENALINE KICKS IN.

Stinger's cockpit calls to mind the elegance of the classic '70s Gran Turismo. Its cocoon-like interior features stitch finishing, turbine-inspired air vents, metal-ringed gauges, a Sport-Design steering wheel with paddle shifters,<sup>3</sup> which is also available as a heated steering wheel,<sup>6\*</sup> and more premium features designed to bring spirit and emotion back to long-distance driving.

\*Optional feature available only on certain trims. See [kia.com](http://kia.com) for details.  
3, 6-12 See last page for endnotes. Simulated screen shown. GT2 SHOWN

## 10.25" TOUCH SCREEN WITH NAVIGATION SYSTEM<sup>3</sup>

comes standard on all Stinger trims, with features like high-resolution color graphics and split-screen mode

## WIRELESS CONNECTIVITY

via *Bluetooth*<sup>®7</sup> technology with multi-point connectivity, along with a wireless smartphone charger<sup>8</sup> located in the console storage tray

## HARMAN KARDON<sup>®</sup> PREMIUM AUDIO SYSTEM<sup>9</sup>

with surround sound and 15 speakers is available for rich, crisp sound

## APPLE CarPlay<sup>®10</sup>

integration comes standard, letting you connect to your iPhone by plugging in, and offers an array of features like access to Apple Music, Maps, Siri, and more<sup>3</sup>

## ANDROID AUTO<sup>™11</sup>

works with compatible Android<sup>™12</sup> smartphones and comes standard as a plug-in feature, allowing hands-free<sup>3</sup> access to your playlists, Google Maps,<sup>12</sup> and more — just say "Hey Google" to get started<sup>12</sup>

DEP  
DEALER ePROCESS





### FIND MY CAR WITH SURROUND VIEW MONITOR<sup>2\*</sup>

shows your vehicle location and allows you to remotely capture 360-degree-view photos surrounding your Stinger through the Kia Access with UVO link<sup>13</sup> app, allowing you to see the activity around your vehicle before you approach

### LAST-MILE NAVIGATION

gives you walking directions to the destination set in the Navigation system<sup>3</sup> of up to one mile away, for when parking is not available close by, via the Kia Access with UVO link<sup>13</sup> app on your compatible smartphone and native map application

### CONNECTED ROUTING

uses real-time and historical traffic data to help determine the most efficient route to your requested destination, and can even show some speed cameras along the route and weather reports at your destination

### CALENDAR INTEGRATION

is designed to sync your Google<sup>12</sup> or iCloud<sup>40</sup> calendar with UVO link<sup>13</sup>, allowing you to view calendar events while in the Stinger, and navigate<sup>3</sup> to your event's destination, if the address has been entered in the calendar event

### VALET MODE

allows you to lock the Stinger's touch screen when leaving the vehicle with a valet or other unknown person, keeping personal info such as your address book, call history, and navigation destinations hidden from view



### UVO<sup>13</sup> SKILL & VOICE ACTIVATION INTEGRATION

allow you to utilize a nearby, paired Amazon Alexa<sup>14</sup>- or Google Assistant<sup>12</sup>-enabled smart device to remotely control some functions (such as remote start<sup>15</sup>) on your Kia with just your voice. Just enable UVO Skill in the Amazon Alexa<sup>14</sup> app or link the UVO Agent with the Google Assistant<sup>12</sup> app on your compatible smartphone to get started

# LET UVO DO THAT.

UVO link<sup>13</sup> is Kia's smart telematics system that integrates with your compatible smartphone and smart speaker via an embedded modem to handle an array of convenient tasks.

### WE'LL COVER THE FIRST YEAR

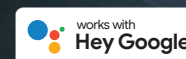
of your UVO subscription fees beginning from the original purchase/lease date<sup>13</sup> to help get you started, which includes 911 Connect<sup>16</sup>, which will automatically attempt to call 911 if your airbags deploy, plus 24/7 Roadside Assistance<sup>17</sup>

### DOWNLOAD THE KIA ACCESS WITH UVO link<sup>13</sup> APP

from the App Store<sup>10</sup> or Google Play<sup>12</sup> Store to make the most of UVO and its remote features<sup>15</sup>



GO TO OWNERS.KIA.COM OR DOWNLOAD THE KIA ACCESS WITH UVO link APP TO ACTIVATE



\*Optional feature available only on certain trims. See [kia.com](http://kia.com) for details. 2, 3, 10, 12-17 See last page for endnotes. GT2 SHOWN



At Kia, the priority is always on improving our safety features. Advanced sensor systems, strategically placed airbags, and breakthroughs in materials and design that have led to strong body construction are just a few of the ways we never stop working to increase your protection.†

**ADVANCED AIRBAG SYSTEM<sup>18</sup>**

includes dual front, front seat-mounted side, driver's knee, and full-length side curtain airbags

**AIRBAG & SEAT-BELT SENSORS<sup>18</sup>**

monitor the severity of certain impacts and seat-belt use, then help to control airbag inflation accordingly

**REINFORCED BODY CAGE & SIDE-IMPACT DOOR BEAMS**

constructed of High Tensile Steel alloys help absorb impact energy and deflect side-impact force in certain collisions

**HEIGHT-ADJUSTABLE SEAT-BELT ANCHORS**

let you adjust the front seat belts for a more customized fit to help improve effectiveness

**SAFETY NEVER  
TAKES A DAY OFF.**



**DEP**  
DEALER ePROCESS

†No system, no matter how advanced, can compensate for all driver error and/or driving conditions. Always drive safely. 18 See last page for endnote. Inflated airbags shown for illustration only. GT2 SHOWN

# FEATURES

## MECHANICAL & EXTERIOR

	GT-LINE	GT1	GT2
2.5L Turbo GDI 4-cylinder engine	●	—	—
3.3L Twin Turbo GDI V6 engine	—	●	●
8-speed Automatic Transmission w/paddle shifters <sup>3</sup>	●	●	●
Electronic variable exhaust valve	—	●	●
All-wheel drive (AWD)	○	○	○
Electronically controlled suspension	—	—	●
High-performance shock absorbers	●	●	●
Launch Control	●	●	●
18" alloy wheels	●	—	—
19" alloy wheels	—	●	●
Drive Mode Select	●	●	●
Sunroof	○	●	●
LED projection headlights	—	—	●
LED multi-reflector headlights	●	●	—

## INTERIOR & CONVENIENCE

10.25" touch screen <sup>3</sup> w/multi-phone Bluetooth <sup>®7</sup> wireless technology & Navigation <sup>3</sup>	●	●	●
4.2" TFT LCD Supervision meter cluster	●	●	—
7" color TFT LCD Supervision meter cluster w/sport gauges	—	—	●
9-speaker AM/FM/HD radio audio system	●	●	—
15-speaker Harman Kardon <sup>9</sup> premium audio system	○	—	●
UVO link <sup>13</sup>	●	●	●
Apple CarPlay <sup>®10</sup>	●	●	●
Android Auto <sup>™11</sup>	●	●	●
SiriusXM <sup>®19</sup> w/3-month All Access trial	●	●	●
USB charging port (front tray)	●	●	●
Rear USB & 12V charging ports	●	●	●
Wireless smartphone charger <sup>8</sup>	●	●	●
Push Button Start w/Smart Key	●	●	●
Heated steering wheel <sup>6</sup>	○	○	○
Dual Zone — Full Automatic Temperature Control	●	●	●
Rain Sensing Wipers	●	●	●
Interior LED mood lighting w/multi-color selection	—	●	●
Auto-dimming outside mirrors	—	—	●
Electronic Parking Brake	●	●	●
Remote Engine Start <sup>15</sup> (on key fob)	●	●	●
Smart Power Trunk	—	—	●

## KIA DRIVE WISE<sup>2</sup>

	GT-LINE	GT1	GT2
Forward Collision-Avoidance Assist w/Pedestrian Detection, Cyclist Detection & Junction Turning <sup>2</sup>	●	●	●
Driver Attention Warning w/Leading Vehicle Departure Alert <sup>20</sup>	●	●	●
Lane Departure Warning <sup>2</sup>	●	●	●
Lane Keeping Assist <sup>2</sup>	●	●	●
Lane Following Assist <sup>2</sup>	●	●	●
Low Beam Assist — Dynamic <sup>2</sup>	—	—	●
High Beam Assist <sup>4</sup>	●	●	●
Safe Exit Assist <sup>2</sup>	●	●	●
Rear View Monitor w/Parking Guidance <sup>2</sup>	●	●	●
Surround View Monitor <sup>2</sup>	—	—	●
Blind-Spot Collision-Avoidance Assist <sup>2</sup>	●	●	●
Blind-Spot View Monitor <sup>2</sup>	—	—	●
Rear Cross-Traffic Collision-Avoidance Assist <sup>2</sup>	●	●	●
Parking Distance Warning — Reverse <sup>2</sup>	●	●	●
Parking Distance Warning — Forward <sup>2</sup>	—	—	●
Head-Up Display <sup>5</sup>	—	—	●
Navigation-based Smart Cruise Control w/Stop & Go <sup>2</sup>	●	●	●
Highway Driving Assist <sup>2</sup>	●	●	●

## SEATING & TRIM

Leather seat trim	●	●	—
Nappa leather-trimmed seats	—	—	●
12-way power-adjustable driver's seat	●	●	—
16-way power-adjustable driver's seat w/seat extension & side bolsters	—	—	●
8-way power-adjustable front passenger seat	○	●	—
12-way power-adjustable front passenger seat	—	—	●
Heated front seats <sup>5</sup>	●	●	●
Ventilated front seats	—	—	●
Heated outboard rear seats <sup>6</sup>	—	—	●
Integrated Memory System for driver's seat	—	—	●

## SAFETY<sup>18</sup>

Dual front advanced airbags	●	●	●
Dual front & rear seat-mounted side airbags	●	●	●
Full-length side curtain airbags	●	●	●
Driver's side knee airbag	●	●	●
Hill-start Assist Control	●	●	●

# SPECIFICATIONS

## ENGINE

Type	2.5L 4-cylinder	3.3L V6
Valve gear	DOHC w/Dual CVVT	DOHC w/Dual CVVT
Horsepower	300 hp <sup>1</sup> @ 5,800 rpm	368 hp <sup>1</sup> @ 6,000 rpm
Torque	311 lb.-ft. @ 1,650–4,500 rpm	376 lb.-ft. @ 1,300–4,500 rpm
Transmission	8-speed Automatic Transmission	8-speed Automatic Transmission
AWD (optional)	Electronic AWD	Electronic AWD w/torque vectoring

## BODY & CHASSIS

Body type	Steel unibody w/Iso-Structure <sup>™</sup> construction
Front suspension	Independent, MacPherson struts, coil springs, stabilizer bar
Rear suspension	Independent, multi-link, stabilizer bar

## TIRES & BRAKES

Tire size	225/45R18	225/40R19 front/ 255/35R19 rear
Brakes (front/rear)	13.6 in. vented disc/ 13.0 in. disc	Brembo <sup>®</sup> 13.8 in. vented disc/ 13.4 in. vented disc

## DIMENSIONS

Wheelbase	114.4 in.	114.4 in.
Track (front/rear)	62.8 in./64.8 in.	62.8 in./63.7 in.
Length	190.2 in.	190.2 in.
Width	73.6 in.	73.6 in.
Height	55.1 in.	55.1 in.
Headroom (front/rear)	38.3 in./37.0 in.	38.3 in./37.0 in.
Shoulder room (front/rear)	56.4 in./54.8 in.	56.4 in./54.8 in.
Legroom (front/rear)	42.6 in./36.4 in.	42.6 in./36.4 in.
Cargo volume	23.3 cu. ft.	23.3 cu. ft.
Passenger volume	93.8 cu. ft.	93.8 cu. ft.

## 2022 EPA-ESTIMATED FUEL ECONOMY<sup>21</sup>

City MPG (RWD/AWD)	22/21	18/17
Highway MPG (RWD/AWD)	32/29	25/24
Combined MPG (RWD/AWD)	25/24	20/20
Fuel tank capacity (gallons)	15.9	15.9

## TRIM OPTIONS AND PACKAGES

### ALL-WHEEL DRIVE PACKAGE

All-wheel drive  
Heated steering wheel<sup>6</sup>

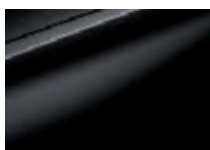
### SUN & SOUND PACKAGE

**(GT-Line only)**  
Sunroof  
Harman Kardon<sup>®9</sup> premium audio surround-sound system w/15 speakers  
8-way power-adjustable front passenger seat

## EXTERIOR COLORS



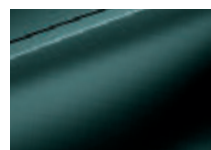
SNOW WHITE  
(GT-LINE, GT1, GT2)



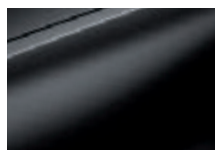
AURORA BLACK  
(GT-LINE, GT1, GT2)



CERAMIC SILVER  
(GT-LINE, GT1, GT2)



ASCOT GREEN  
(GT-LINE, GT1, GT2)



PANTHERA METAL  
(GT-LINE, GT1, GT2)

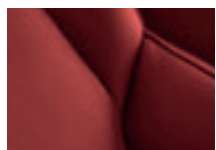


HI CHROMA RED  
(GT-LINE, GT1, GT2)

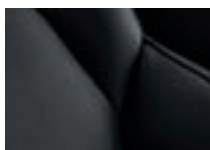


MICRO BLUE  
(GT-LINE, GT1, GT2)

## INTERIOR COLORS



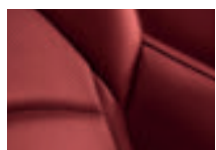
RED LEATHER  
(GT-LINE, GT1)



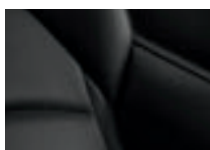
BLACK LEATHER  
(GT-LINE, GT1)



BEIGE LEATHER<sup>^</sup>  
(GT-LINE, GT1)



RED NAPPA LEATHER  
(GT2)



BLACK NAPPA LEATHER  
(GT2)



BEIGE NAPPA LEATHER<sup>^</sup>  
(GT2)

# GO WITH CONFIDENCE.

At Kia, we believe in the enduring quality of our vehicles. We believe in our materials, our workers, our engineers, and our designers. And to prove it, we stand by each vehicle we make with an industry-leading powertrain warranty that lasts for 10 years.



### INDUSTRY-LEADING WARRANTY PROGRAM<sup>22</sup>

- 10-YEAR/100,000-MILE LIMITED POWERTRAIN WARRANTY
- 5-YEAR/60,000-MILE LIMITED BASIC WARRANTY
- 5-YEAR/100,000-MILE LIMITED ANTI-PERFORATION WARRANTY
- 5-YEAR/60,000-MILE 24-HOUR ROADSIDE ASSISTANCE



Actual colors may vary from printed brochure. See [kia.com/stinger](http://kia.com/stinger) for interior combinations. <sup>^</sup>Available early summer.

6, 9, 22 See last page for endnotes. GT2 SHOWN


# ENDNOTES

1. Premium gasoline recommended. 2. These features are not substitutes for safe driving and may not detect all objects surrounding vehicle. Always drive safely and use caution. 3. Distracted driving can result in a loss of vehicle control. When operating a vehicle, never use a handheld device or vehicle system that takes your focus away from safe vehicle operation. Navigation is for information purposes only, and Kia does not make any warranties about the accuracy of the information. 4. High Beam Assist does not operate below certain speeds, or in some lighting and driving conditions. Please be aware of your surroundings and exercise proper road etiquette when operating a vehicle using the high beams. 5. Failure to pay attention to travel conditions and vehicle operation could result in loss of vehicle control. Always drive safely and use caution. 6. Use extreme caution when using seat warmers or heated steering wheel to avoid burns. Refer to the Owner's Manual for more safety information. 7. The *Bluetooth*® word mark and logos are registered trademarks owned by Bluetooth SIG Inc., and any use of such marks by Kia is under license. A compatible *Bluetooth*®-enabled cell phone is required to use *Bluetooth*® wireless technology. 8. Charging system only works with select devices. Refer to the vehicle's Owner's Manual for warnings and instructions. 9. Harman Kardon is a registered trademark of Harman International Industries, Inc. 10. Apple, the Apple logo, App Store, Apple CarPlay, iCloud, and iPhone are trademarks of Apple Inc., registered in the U.S. and other countries. 11. To use Android Auto on your car display, you need a compatible Android smartphone with an active data plan. You can check which smartphones are compatible at [g.co/androidauto/requirements/](https://g.co/androidauto/requirements/). 12. Google devices are sold separately and require a Wi-Fi internet connection. Google, Android, Google Play, Android Auto, and other marks are trademarks of Google LLC. 13. Purchase/lease of certain model year 2022 and newer Kia vehicles with UVO link includes a complimentary 1-year Ultimate package subscription starting from new vehicle retail sale/lease date as recorded by the dealer. After your complimentary 1-year UVO link Ultimate package subscription expires, continued access to the full suite of UVO link services available on your Kia will require a paid subscription at the then-current subscription rate or your use of certain UVO link Ultimate package features may immediately terminate. Use of UVO is subject to agreement to the UVO Privacy Policy (available at [owners.kia.com/us/en/privacy-policy.html](https://owners.kia.com/us/en/privacy-policy.html)) and Terms of Service (available at [owners.kia.com/us/en/terms-of-service.html](https://owners.kia.com/us/en/terms-of-service.html)). UVO link is transferable to subsequent owner during the original UVO link service term. Only use UVO link when safe to do so. Kia Access with UVO link app is available from the Apple® App Store® or Google Play Store. Kia Motors America, Inc. reserves the right to change or discontinue UVO link at any time without prior notification or incurring any future obligation. Message and data rates may apply. Cellular and GPS coverage are required to use most features. UVO link features may vary by model, model year, and trim level. Features, specifications, and fees are subject to change. **UVO link may be currently unavailable for Model Year 2022 and newer vehicles sold in Massachusetts; please see [www.owners.kia.com](https://www.owners.kia.com) for updates on availability.** For more on details and limitations, visit [www.kia.com](https://www.kia.com) or your authorized Kia dealer. 14. Amazon devices are sold separately and require a Wi-Fi internet connection. Amazon, Alexa, and all related logos are trademarks of Amazon.com, Inc. or its affiliates. 15. Remote features require a UVO subscription, a compatible smartphone, and a wireless signal with good coverage to function. Normal cellular service rates may apply. Do not use remote climate control if vehicle is in an enclosed area (e.g., closed garage) or a partially enclosed area without ventilation. Close all doors leading from adjacent living areas to the vehicle area before executing a remote climate control command. If any door or hatch is not closed properly, the remote lock and unlock functions will not work. 16. 911 Connect must be enabled on head unit, and activates after airbag deployment. Requires a wireless signal with good coverage to function. 17. 24-hour Roadside Assistance is a service plan provided by Kia Motors America, Inc. Limitations apply. See Kia Warranty and Consumer Information Manual for details. Requires cellular coverage. 18. For maximum protection, always wear your seat belt. No system, no matter how advanced, can compensate for all driver errors, driving conditions, and/or injury. 19. SiriusXM® audio and data services each require a subscription. Subscriptions are sold separately, or as a package, by Sirius XM Radio Inc. **If you decide to continue service after your 3-month All Access trial subscription expires, which is included with your newly purchased or leased vehicle, the subscription plan you choose will automatically renew thereafter and you will be charged according to your chosen payment method at then-current rates. Fees and taxes apply. See SiriusXM's Customer Agreement at [www.siriusxm.com](https://www.siriusxm.com) for complete terms and how to cancel, which includes calling SiriusXM at 1-866-635-2349. All fees and programming subject to change. Traffic information not available in all markets. See [siriusxm.com/traffic](https://siriusxm.com/traffic) for details.** Sirius, XM, SiriusXM, Pandora, and all related marks and logos are trademarks of Sirius XM Radio Inc. Satellite and streaming lineups may vary slightly. 20. Driver Attention Warning is not a substitute for safe driving and may not detect all instances of inattentive driving practices. Failure to pay attention to travel conditions and vehicle operation could result in loss of vehicle control. Always drive safely and use caution. 21. Based on EPA estimates. Actual mileage will vary with options, driving conditions, driving habits, and your vehicle's condition. 22. Warranties include 10-year/100,000-mile powertrain and 5-year/60,000-mile basic. All warranties and roadside assistance are limited. See retailer for warranty details.

KIA MOTORS AMERICA, INC. P.O. BOX 52410 IRVINE, CA 92619-2410 1-800-333-4KIA

 [kia.com](https://kia.com)

 [instagram.com/kiamotorsusa](https://instagram.com/kiamotorsusa)

 [youtube.com/kia](https://youtube.com/kia)

 [facebook.com/kia](https://facebook.com/kia)

 [twitter.com/kia](https://twitter.com/kia)



[www.kia.com/dealer-e-process](https://www.kia.com/dealer-e-process)