

X F





Always obey legal speed limits



XF

THE SPORTS SEDAN

Sleek, dynamic, daring, the XF is a fusion of sports car styling with outstanding luxury sedan comfort. Its inspired engineering has won over one hundred international awards. It has proved itself the game-changer in the world of automotive design. More than a machine, the XF combines Jaguar's renowned flair for style and luxury with a genius for technological innovation, providing an instinctive and rewarding driving experience that other sports sedans can only aspire to. It looks alive, it feels alive.

XF | XF SUPERCHARGED | XFR | XFR-S

VEHICLE SHOWN: XF IN POLARIS WHITE



MOVING DESIGN

With its glowing Bi-function HID headlamps, outlined with crystal white daytime running LEDs, and its toned bodyshape, the XF always looks ready for action. Its primed, nose-down, attitude, power vents and aerodynamic lines are more than an athletic pose, they've been precision-honed through exhaustive design testing to perfect the air flow emergency of the XF. Each curve and contour has been refined to produce top aerodynamic performance, helping to improve fuel consumption and emissions. Beautiful, intense, potent; first the XF captures your imagination and then your heart.



VEHICLE SHOWN ABOVE: XF IN POLARIS WHITE
VEHICLE SHOWN LEFT: XF WITH OPTIONAL AERODYNAMIC PACK IN POLARIS WHITE





VEHICLE SHOWN: XF IN POLARIS WHITE

THE XF COLLECTION

Refined power and modern sporting elegance - the XF collection has the engines, the style and the attitude from the four distinct characters of XF, XF Supercharged, XFR and XFR-S. You can choose your perfect balance between performance and economy, driving style and lifestyle from the four distinct characters of XF, XF Supercharged, XFR and XFR-S.

Discover the stylish design, luxury craftsmanship, remarkable fuel economy and performance, thanks to a range of innovative technologies.

The XFR combines stunning looks with exceptional performance. This is reflected in its sculpted front air intakes, gloss black front grille and lower valance and quad exhausts.

The XFR-S has a 5.0 liter supercharged engine producing 550HP and 502 lb-ft of torque for a top speed of 186mph and awe-inspiring acceleration of 0-60mph in 4.4 seconds*. XFR-S is the Jaguar sports sedan taken to the extreme.

Exterior and Interior Option packs are available to enable you to create the XF that's just right for you. For more information visit jaguarusa.com or visit your local retailer.



XF i4 T 2.0 LITER
POWER: 240HP

XF V6 SC 3.0 LITER
POWER: 340HP

XF V6 SC AWD 3.0 LITER
POWER: 340HP



*Always obey legal speed limits
XF Supercharged not shown

VEHICLE SHOWN: XF WITH OPTIONAL AERODYNAMIC PACK IN DARK SAPPHIRE

> XFR 5.0 LITER SUPERCHARGED
POWER: 510HP



VEHICLE SHOWN: XFR IN ITALIAN RACING RED

> XFR-S 5.0 LITER SUPERCHARGED
POWER: 550HP



VEHICLE SHOWN: XFR-S IN FRENCH RACING BLUE



COMBINING TECHNOLOGIES FOR EFFICIENCY



8-SPEED TRANSMISSION

DRIVE MODE AND SPORT MODE

STOP/START TECHNOLOGY

The XF is renowned for its performance, refined drive and effortless power and offers a choice of engines to suit every driver's needs and driving style, whether improved fuel economy or power and performance are the priority. The range includes new smaller engines including the 2.0 Liter turbocharged delivering lower CO₂ emission and better fuel economy. Intelligent **Stop/Start technology** featured on all engines also contributes to delivering improvement in fuel efficiency depending on conditions.

JAGUAR
2.0 LITER i4
TURBOCHARGED

POWER 240HP

ACCELERATION 0-60mph 7.5 seconds*

TOP SPEED 121mph*

COMBINED (mpg) 23**



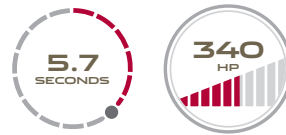
JAGUAR
3.0 LITER V6
SUPERCHARGED

POWER 340HP

ACCELERATION 0-60mph 5.7 seconds*

TOP SPEED 121mph*

COMBINED (mpg) 21**



JAGUAR
3.0 LITER V6
SUPERCHARGED [AWD]

POWER 340HP

ACCELERATION 0-60mph 6.1 seconds*

TOP SPEED 121mph*

COMBINED (mpg) 19**



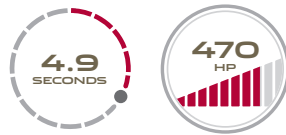
JAGUAR
5.0 LITER V8
SUPERCHARGED

POWER 470HP

ACCELERATION 0-60mph 4.9 seconds*

TOP SPEED 155mph*

COMBINED (mpg) 18**



JAGUAR
5.0 LITER V8
SUPERCHARGED

POWER 510HP

ACCELERATION 0-60mph 4.7 seconds*

TOP SPEED 155mph*

COMBINED (mpg) 18**



JAGUAR
5.0 LITER V8
SUPERCHARGED

POWER 550HP

ACCELERATION 0-60mph 4.4 seconds*

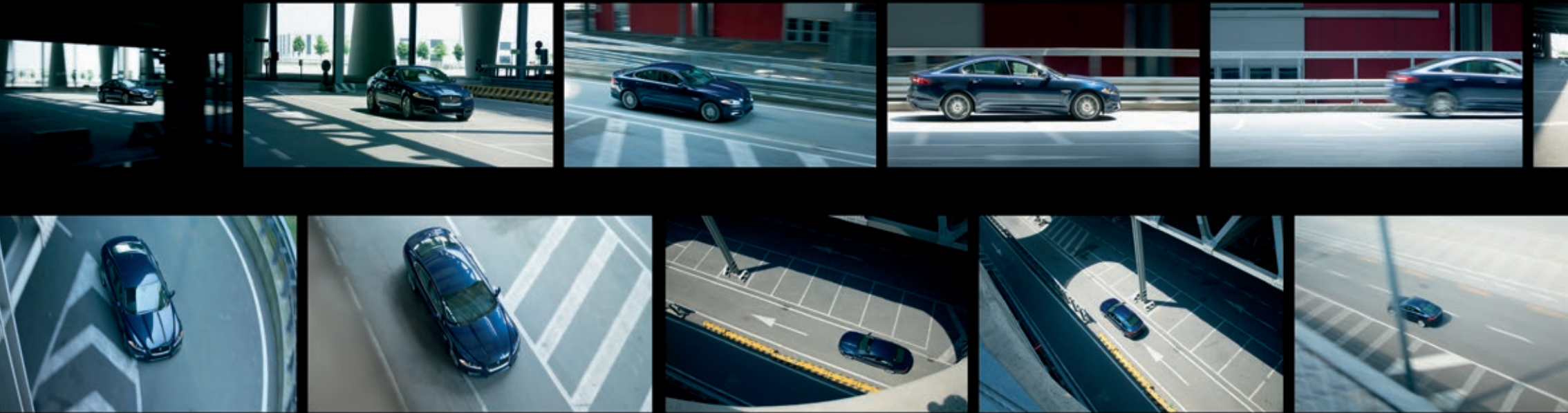
TOP SPEED 186mph**

COMBINED (mpg) 24.4**



*Always follow local speed limits **These figures are correct at time of going to press. All figures are EPA estimates. Actual mileage may vary.

VEHICLE SHOWN: XF IN POLARIS WHITE WITH OPTIONAL CARAVELA WHEELS



DRIVING DYNAMICS



ADAPTIVE DYNAMICS

SERVOTRONIC STEERING SYSTEM



Responsive, powerful, driver-focused, the XF utilizes a range of technologies to assist, improve and enhance the driving experience. The acclaimed handling is delivered through combining stiff body architecture, aerodynamic form and innovative suspension systems.

The **Adaptive Dynamics** system of the XF, available on a selection of engines, continuously monitors the suspension, varying the damping to suit the conditions, whether cornering, navigating potholes or accelerating on highways*. The system is designed to calculate the appropriate suspension settings up to 500 times per second, adjusting the dampers to help keep the car as flat, stable and secure as possible.

With the **Servotronic steering system**, the XF delivers pinpoint maneuverability at low speeds then reduces assistance at higher speeds for confident handling.

*These features are not a substitute for driving safely with due care and attention and will not function under all circumstances, speeds, weather and road conditions, etc. Driver should not assume that these features will correct errors of judgment in driving. Please consult the owner's manual or your local authorized Jaguar Retailer for more details.

VEHICLE SHOWN: XF WITH OPTIONAL AERODYNAMIC PACK IN DARK SAPPHIRE



ALL CONDITIONS, ALL WHEEL DRIVE

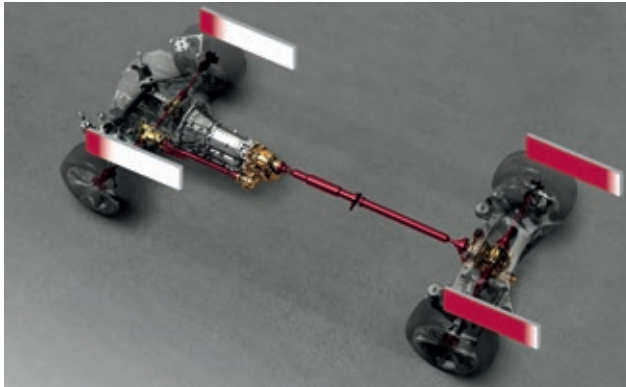


INTELLIGENT AND ADAPTIVE

EXTREME CAPABILITY

JAGUAR AGILITY

DRY ROAD CONDITIONS



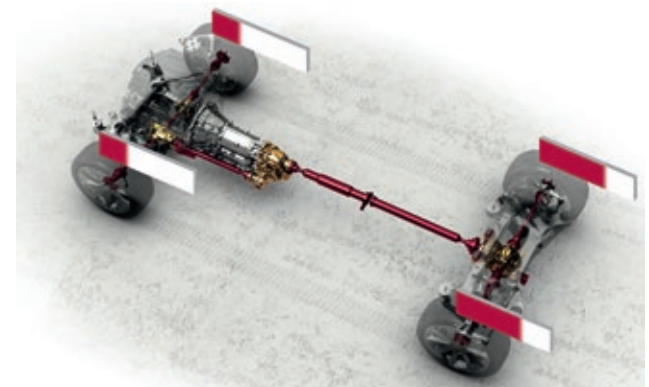
In normal driving conditions, virtually all torque is distributed to the rear wheels providing signature Jaguar rear wheel drive performance.

VARIABLE ROAD CONDITIONS



Where road conditions are changing, up to 100% of torque can be distributed to the front wheels as required to ensure optimum traction.

AWD WINTER MODE*



At the touch of a button Winter Mode can be selected to automatically distribute 30% of the torque to the front wheels and 70% of the torque to the rear wheels maximising control in difficult conditions.

Inspiring driver confidence on almost all driving surfaces and in extreme weather, the advanced and intelligent technology includes Jaguar **Instinctive All Wheel Drive™** system (AWD), which is available with the 3.0 liter V6 Supercharged engine. In normal conditions, Jaguar AWD preserves the signature Jaguar rear wheel drive performance and agility, as well as improving fuel use and reducing emissions, by applying most of the torque to the rear wheels.

If low traction is sensed at the rear wheels, up to 50 percent of torque is quickly redistributed to the front wheels. When the most extreme conditions are detected – imagine pulling out of a slippery side road onto a dry main road at a T-junction in winter – up to 100 percent of available torque can be applied to the front wheels. The result is the reassurance of having all wheel drive when needed, while maintaining sports car performance in the majority of situations.

*This feature is not a substitute for safe and attentive driving, nor can it overcome all extreme circumstances. Please consult the owner's manual or your local authorized Jaguar Retailer for more details.

VEHICLE SHOWN: XF IN DARK SAPPHIRE WITH OPTIONAL CHROME SIDE POWER VENT



V8

5.0 LITER 510HP



XFR



**461 LB-FT
OF TORQUE**

**8-SPEED ELECTRONIC
AUTOMATIC TRANSMISSION**

**ALL-ALUMINUM
QUAD-CAM POWERPLANT**

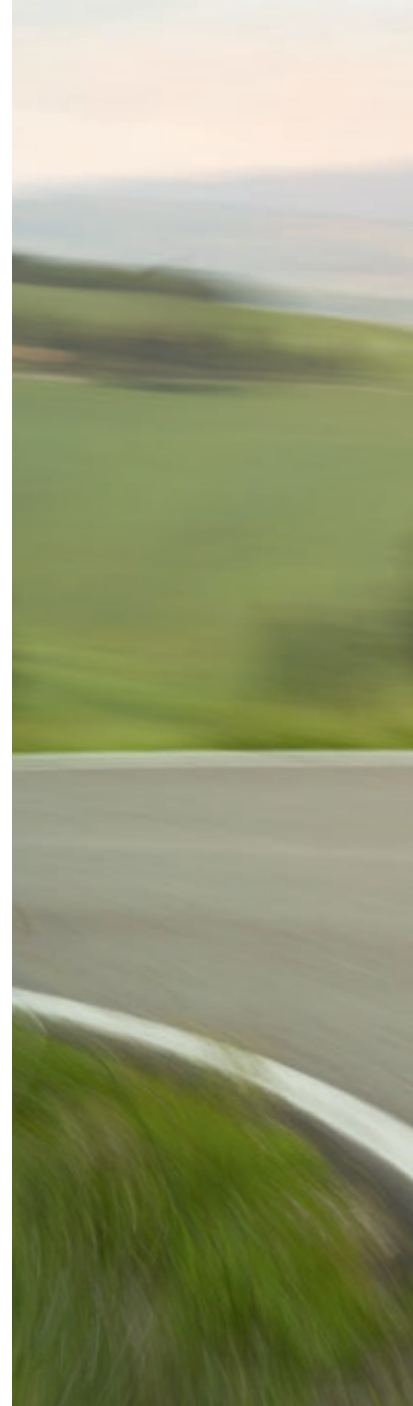
The XFR takes the XF to another performance dimension. With **acceleration of 0-60mph in 4.7 seconds***, the XFR intensifies the sporting experience without compromising any of the comfort.

Beneath the hood with its enlarged air intakes, sits Jaguar's 5.0 liter V8 Supercharged all-aluminum quad-cam engine. Its Intelligent Stop/Start technology and 8-speed electronic automatic transmission is designed to help reduce CO₂ emissions, yet is powerful enough to produce an impressive **510HP and 461 lb-ft of torque**.

The XFR also offers the opportunity for individuals to tailor the car to their own requirements, as well as for personalization, including some option packs which use XFR-S derived components. The Speed Pack recalibrates the engine and transmission to take top speed (Vmax) from 155mph to 174mph*. The Dynamic pack offers sports tuned suspensions, a front bumper aero-splitter, a bespoke rear spoiler, 20 inch Varuna alloy wheels, as well as raising the Vmax to 174mph*.

*Always obey legal speed limits

VEHICLE SHOWN: XFR IN ITALIAN RACING RED





V8

5.0 LITER 550HP



XFR-S



**ELECTRONIC ACTIVE
DIFFERENTIAL**

**BESPOKE R-S
SPORTS EXHAUST**

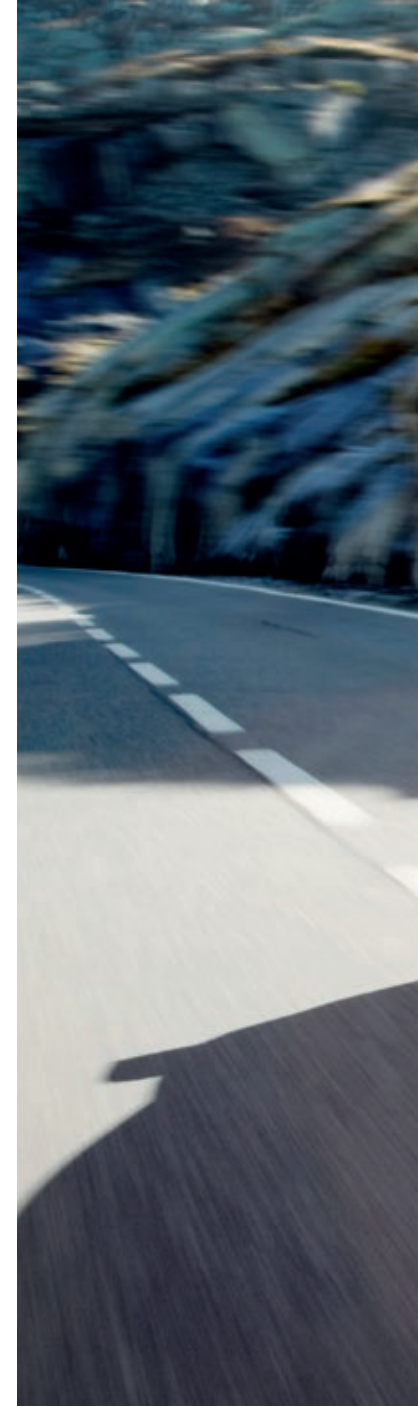
**8-SPEED QUICKSHIFT
TRANSMISSION**

The XFR-S is the most powerful, most agile production sports sedan EVER created by Jaguar. It builds on the performance of the XFR to create a car that is even more driver-focused. The XFR-S has a 5.0 Liter supercharged engine that has been tuned to produce 550HP and 502lb-ft of torque for a **top speed of 186mph** and awe-inspiring **acceleration of 0-60mph in 4.4 seconds***. There is handling to match, thanks to the superb torsional stiffness of the body structure and a chassis set-up that is designed to inspire driver confidence and to keep the car planted. Specially designed suspension components help to maximize response, reduce roll and boost body control with lateral stiffness up by 30 percent.

The XFR-S has the bold, assertive looks too with honed, sleeker aerodynamic lines and super strong, lightweight carbon fiber details, including the lower grille surround, front splitter and rear diffuser, that reduce lift by 68 percent. It also has its own throaty, signature sound from a bespoke R-S sports exhaust. The XFR-S features The XFR-S features a new rear subframe for superior traction and cornering agility for superior traction and cornering agility. The car's increased power calls for the capabilities of high performance brakes and forged 20-inch Varuna lightweight alloy wheels.

*Always obey legal speed limits

VEHICLE SHOWN: XFR-S IN FRENCH RACING BLUE



 R-S







INTELLIGENT ASSISTANCE



ADAPTIVE CRUISE CONTROL (ACC)

EMERGENCY BRAKE ASSIST (EBA)

ADAPTIVE FRONT LIGHTING

BLIND SPOT MONITOR

The safety systems of the XF are designed to be anticipatory, utilizing an array of innovative technological features to be ready for almost anything and assist the driver in dealing with the unexpected. Dynamic Stability Control (DSC) maximizes the stability when it detects the wheels slipping. Electronic Brake Force Distribution measures load weight and distributes braking force to front and back wheels accordingly.

Optional **Adaptive Cruise Control (ACC)** on the XF uses a radar in the front bumper to monitor the vehicle in front, automatically adjusting the speed to maintain a constant distance*.

Emergency Brake Assist (EBA)* is designed to work with Adaptive Cruise Control to detect the severity of a stopping situation and applies optimum crisis braking forces as necessary*.

Adaptive Front Lighting enhances night-time driving. Sensors react to the speed and steering input to deflect the headlamp beams casting light deeper and wider to help give added confidence at night*. The feature is standard on XF Supercharged, XFR and XFR-S and optional on all other models.

An Optional **Blind Spot Monitor*** uses radar sensors to remotely cover areas that cannot be seen either directly or in the mirror, and is designed to alert the driver to cars overtaking with an amber warning icon in the external mirrors*.

The body structure of the XF uses 25 different grades of steel. Boron, an element 900 percent stronger than regular mild steel, is used to help create a vertical ring of safety around occupants. A total of eight airbags help to add further protection**.

*These features are not a substitute for driving safely with due care and attention and will not function under all circumstances, speeds, weather and road conditions, etc. Driver should not assume that these features will correct errors of judgment in driving. Please consult the owner's manual or your local authorized Jaguar Retailer for more details.

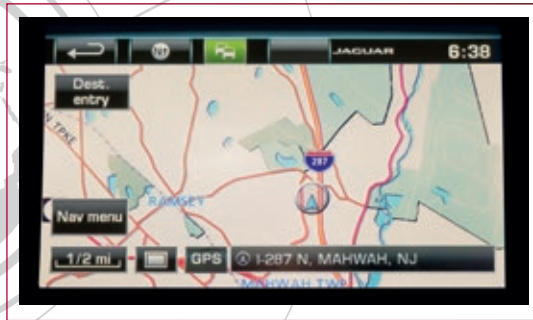
**Please remember that the safety belts in a vehicle constitute the primary protection system for driver and passengers in collisions. The airbag Supplemental Restraint System (SRS) is a supplement to the safety belts and is designed to work as a system with the safety belts. Although airbags provide additional protection, airbags without safety belts do not provide optimal protection in a crash. Always wear your safety belts. Children younger than 13 years old should always be properly restrained in a back seat, away from airbags. Never place an infant seat in the front seat

VEHICLE SHOWN: XFR IN ITALIAN RACING RED

CONNECTED: ANYWHERE, EVERYWHERE

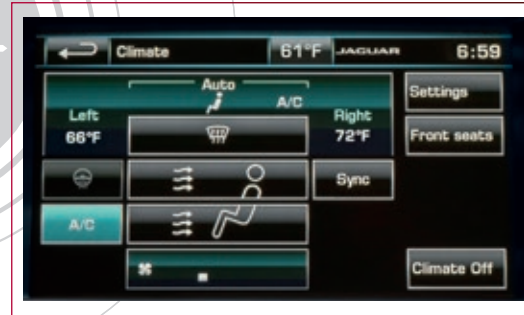
A single 7-inch color Touch-screen in the center console provides multi-function control and displays the three primary functions; audio, climate control and satellite navigation*. For a hands-free experience, the system also offers voice control of audio, navigation and telephone connectivity.

> SATELLITE NAVIGATION



The navigation system of the XF gives clear instructions through the Touch-screen.

> CLIMATE CONTROL

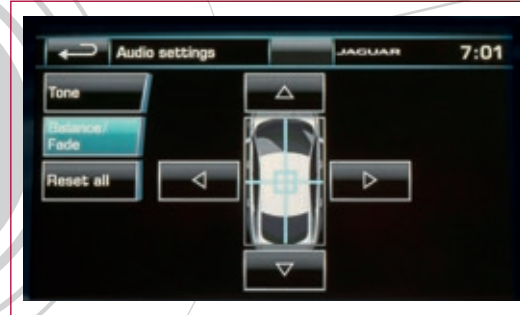


Adjust the environment to suit every occupant with dual-zone climate control, which includes air particle and odor filtration, humidity control and automatic window defrosting. Your front seats can also be heated or cooled at the touch of a button.**

*Driving while distracted can result in the loss of vehicle control. Do not operate, adjust or view the navigation or multimedia systems under conditions that will affect your safety or the safety of others. Only use mobile phones, and other devices, even with voice commands, when it is safe to do so.

**Only available on optional Portfolio Pack, standard on XF Supercharged, XFR and XFR-S

> AUDIO CONTROL

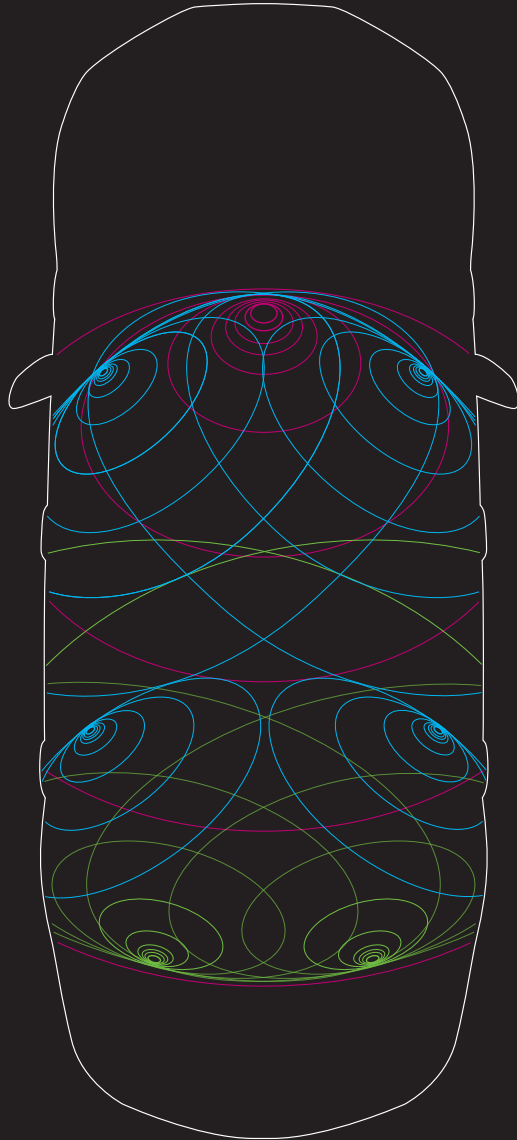


Adjust primary controls such as switching stations via the Touch-screen*. The listening experience can be further optimized by adjusting tone, balance and fade.

> BLUETOOTH® CONNECTION



Phone calls can be made using controls on your Touch-screen or steering wheel via your built-in telephone system of the XF. Link compatible mobile phones to the hands-free telephone system* of the XF and even stream audio content wirelessly into your entertainment system, all using Bluetooth® audio streaming technology. To make things even easier, the optional Interactive Voice system – Say What You See – helps the driver to use and interact more easily. It displays voice prompts on the Touch-screen for you to vocally control phone calls, navigation or audio.



SOUNDS ALIVE



MERIDIAN™

TRIFIELD™

Turn on the superb audio system of the XF and the cabin comes alive, delivering 250 watt of pure audio fidelity, surrounding you with exceptional sound quality.

You can personalize your Jaguar even further to enhance your listening experience. Meridian, the ultimate audio specialists, have optimized two system specifically for the unique interior space of the two systems specifically for your unique interior space. Both are engineered to take your sound system to the next level. Meridian's 380 watt Sound System with 11 loudspeakers produces a seminal audio experience while the incredible 825 watt Surround System uses no less than 17 loudspeakers (including subwoofer) to create sound that is just as the artist intended. Meridian achieves this by benchmarking acoustic performance against real musical instruments.

Pioneered by Meridian, Trifield™ technology ensures a perfect central image for each occupant and produces an holistic sound within the cabin to deliver a concert-like experience. With an XF Meridian Audio System everyone can hear the difference.




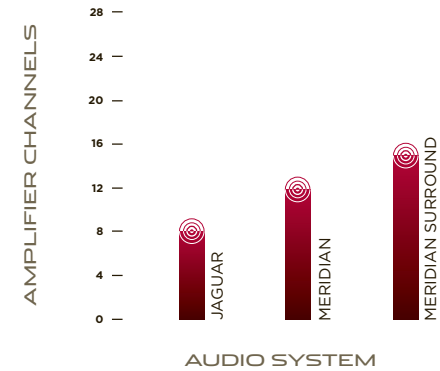
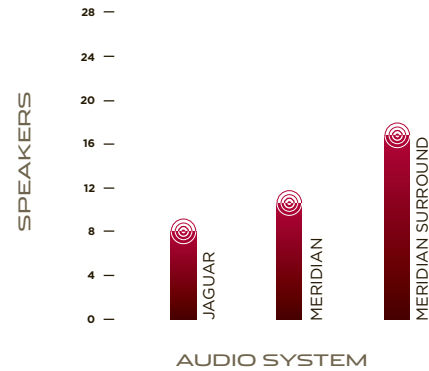
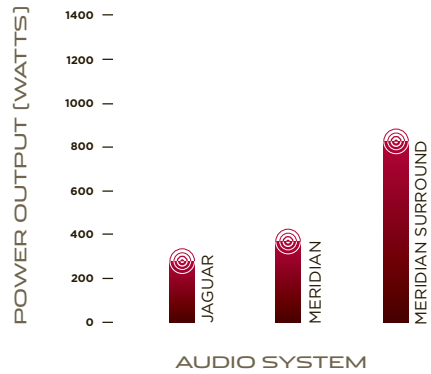
-  Holographic Center Image
-  Door Waves: Tweeter, Midrange & Bass
-  Surround Sound Waves

Diagram representative of Meridian 825W Audio System.



MERIDIAN



JAGUAR

250W, 8 Speakers, 8 channel amplifier, Audyssey MultEQ Audio Equalization



MERIDIAN

380W, 11 Speakers, 12 channel class D DSP amplifier, Audyssey MultEQ Audio Equalization, Dynamic volume control



MERIDIAN SURROUND

825W, 17 Speakers, 15 channel class D DSP amplifier, Audyssey MultEQ Audio Equalization, 7.1 Surround Sound, Trifield™ technology







INTERIOR SHOWN: XF WITH PORTFOLIO INTERIOR PACK. UPPER FASCIA IN WARM CHARCOAL WITH IVORY CONTRAST STITCH AND KNURLED ALUMINUM WITH SATIN ROSEWOOD VENEER



ALIVE INSIDE



JAGUARDRIVE SELECTOR™

PHOSPHOR BLUE HALO LIGHTING

Settle in to the XF and the softly pulsing 'start' button greets you. Push and the engine engages, and the XF awakes. Even as you lift your finger, the precision-milled aluminum **JaguarDrive Selector™** rises snugly into the palm of your hand. The engine gently throbs as the air vents, invisible until needed, roll open in unison and cool **Phosphor blue halo lighting** illuminates the interior controls. Let the excitement begin.

Ergonomically optimized, the cabin of the XF is a space both contemporary and luxury, created to focus on driver and passenger needs and to excite the senses. Comfort and quality reign supreme with form hugging seats, real wood veneers, Piano Black veneer and aluminum surfaces.

From the premium floor carpet and side trims to the polished stainless steel finishers, there is luxury throughout the XF. Thoughtful design encompasses every feature. The steering wheel position adjusts at the touch of a button, along with the seat and mirror. These settings can be memorized for different drivers. The XF welcomes you to the drive ahead.



EXPRESS YOURSELF IN COLOR



**EXTERIOR
COLORS**

LEATHERS

**FASCIA AND
VENEERS**

**INTERIOR COLOR
COMBINATIONS**

**OPTION
PACKS**

Jaguar offers a stunning collection of different color, trim and veneer choices. The XF is available in four model choices; XF, XF Supercharged, XFR and XFR-S, to enable you to create the XF that's just right for you.



> EXTERIOR COLORS

From Polaris White to Caviar, from the race inspired colors of Italian Racing Red to British Racing Green, Jaguar offers an outstanding paint spectrum to bring your XF alive. With numerous color choices in either standard or metallic finish, this is the opportunity to make it your XF.

SOLID



Ebony

METALLIC



Dark Sapphire**



Osmium Blue**



Polaris White†



Ultimate Black**



Carnelian Red†



Stratus Grey**



Caviar†

†Xirallic Metallic Paint ‡Available on XFR

‡Available on XFR-S only

For availability please consult your local Jaguar retailer.

RACE INSPIRED



Italian Racing Red^{††}



French Racing Blue¹



Satellite Grey^{††}



Rhodium Silver^{††}



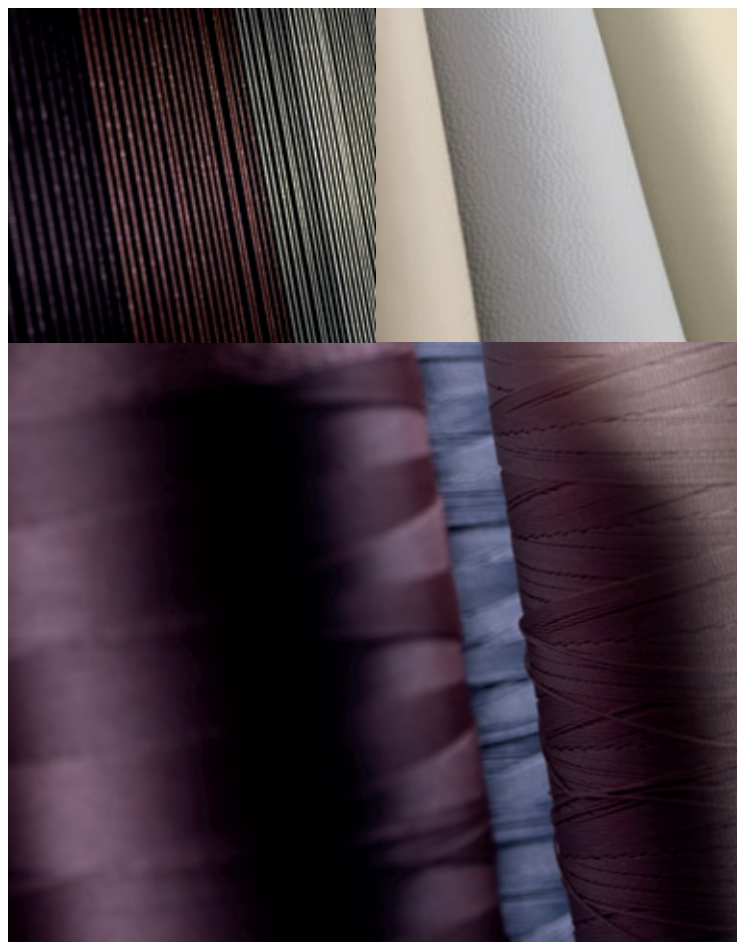
Lunar Grey^{††}



British Racing Green^{††}



Cashmere^{*}



INNER BEAUTY

Craftsmanship goes to the very heart of the XF and provides unequivocal evidence of Jaguar quality.

Seat leather is available in **3 different grains**: Bond grain, soft grain and carbon soft grain. Leather is sourced from the finest hide suppliers in the UK and Italy ensuring a glove soft and natural feel. All leathers go through an extensive finishing process to protect the material while preserving its unique appearance and character.

Twin needle stitching is applied throughout the XF for durability. On selected models, contrast stitching is combined with seat leathers and door bins to add a further touch of luxury. There is also a choice between Carbon Fiber and Piano Black veneers, while every XFR-S interior is finished with piping on the seats.



 LEATHERS

Warm Charcoal soft grain
(also available in Bond grain and Suedecloth)

Barley soft grain
(also available in Bond grain and Suedecloth)

Dove Bond grain
(also available in soft grain)

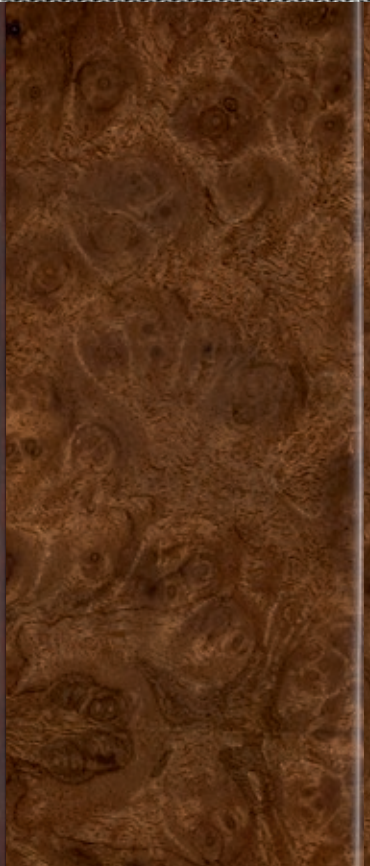
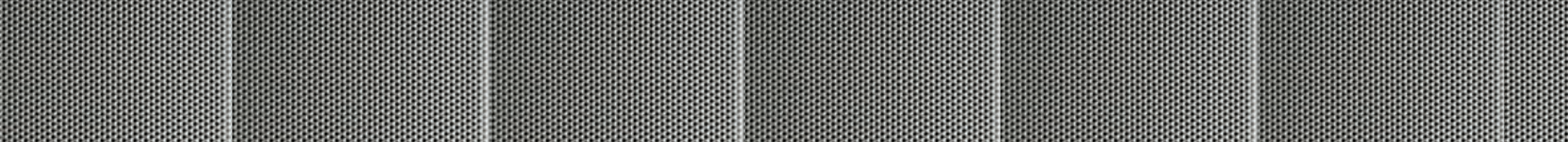


Ivory soft grain

London Tan soft grain

Red Zone soft grain

Warm Charcoal
carbon soft grain
(available on XFR-S only)



 XF FASCIA AND VENEERS

Knurled Aluminum
with Piano Black

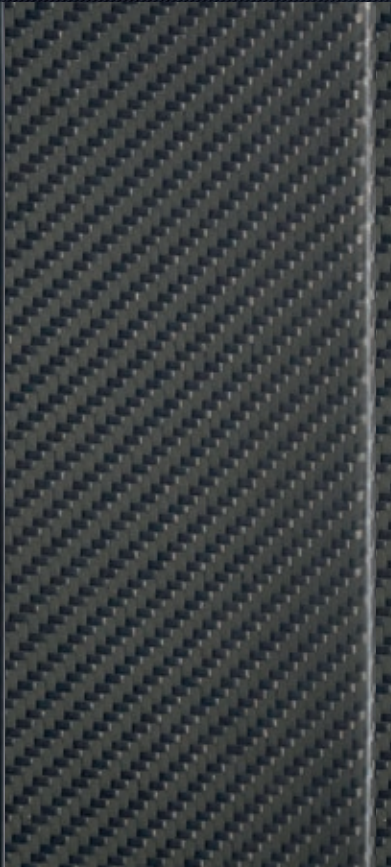
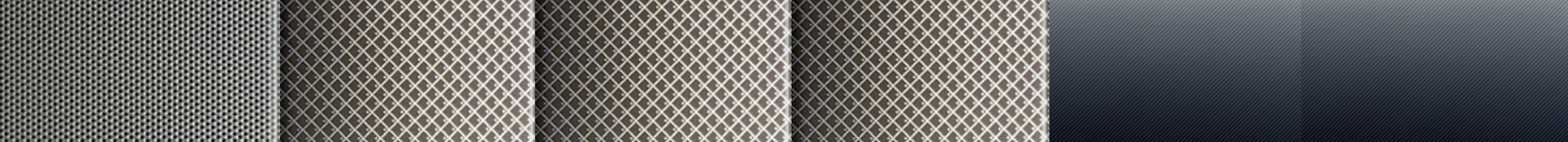
Knurled Aluminum
with Carbon Fiber

Knurled Aluminum
with Gloss Rich Oak

Knurled Aluminum
with Satin Rosewood

Knurled Aluminum
with Gloss Figured Ebony

Knurled Aluminum
with Gloss Burl Walnut



XFR

Knurled Aluminum with
Satin American Walnut

Dark Mesh Aluminum
with Gloss Dark Oak

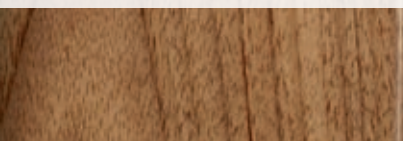
Dark Mesh Aluminum
with Piano Black

Dark Mesh Aluminum
with Carbon Fiber

XFR-S

Dark Linear Aluminum
with Piano Black

Dark Linear Aluminum
with Carbon Fiber



> XF INTERIOR COLOR COMBINATIONS

PERSONALIZATION

XFR INTERIOR

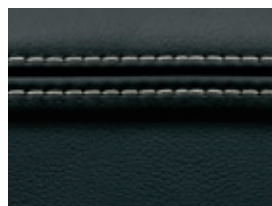


1. SEAT



Ivory

2. UPPER FASCIA WITH STITCH



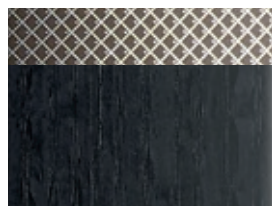
Warm Charcoal with Ivory

3. HEADLINING



Canvas

4. FASCIA
5. VENEER



Dark Mesh Aluminum with Gloss Dark Oak

1. Seat trim applies to seats and door trim inserts 2. Upper fascia applies to dashboard, center console and upper door trims. Contrast stitch applies to upper fascia. Fascia (Knurled Aluminum or Dark Mesh Aluminum) linked to veneer choice. For full fascia and veneer options see page 38.

XF

SEAT
[BOND GRAIN LEATHER]



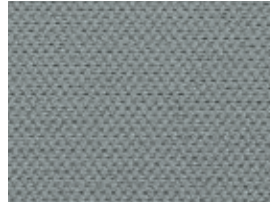
Warm Charcoal

UPPER FASCIA WITH STITCH

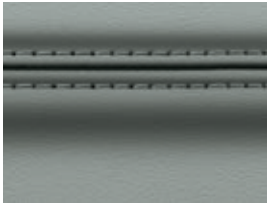


Warm Charcoal
with Warm Charcoal

HEADLINING



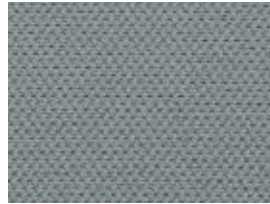
Dove



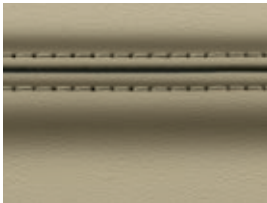
Dove



Warm Charcoal
with Warm Charcoal



Dove



Barley



Warm Charcoal
with Warm Charcoal



Canvas

XF PORTFOLIO PACKAGE

SEAT
[SOFT GRAIN LEATHER]



Warm Charcoal

UPPER FASCIA WITH STITCH



Warm Charcoal
with Ivory

HEADLINING [SUEDECLCLOTH]



Canvas or



Jet



London Tan



Warm Charcoal
with London Tan



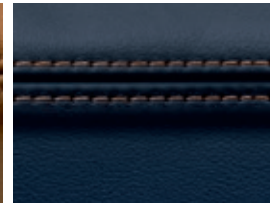
Canvas or



Jet



London Tan

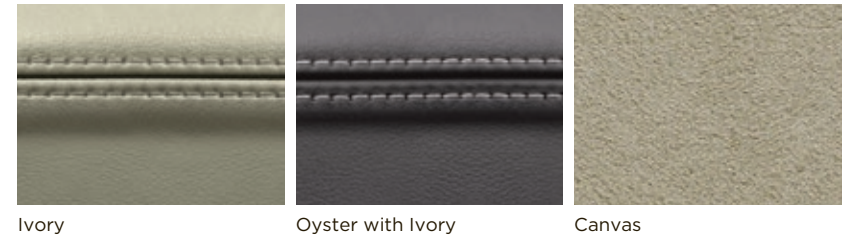
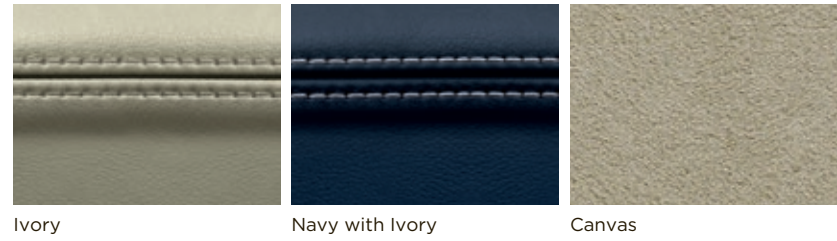


Navy with
London Tan



Canvas

XF PORTFOLIO PACKAGE CONTINUED



XF SPORT PORTFOLIO PACKAGE

SEAT [SOFT GRAIN LEATHER]	UPPER FASCIA WITH STITCH	HEADLINING [SUEDECLOTH]	
			
Warm Charcoal	Warm Charcoal with Ivory	Dove	or Jet
			
Barley	Warm Charcoal with Barley	Canvas	or Jet
			
Red Zone and Warm Charcoal	Warm Charcoal with Red Zone	Dove	or Jet

SEAT [SOFT GRAIN LEATHER]	UPPER FASCIA WITH STITCH	HEADLINING [SUEDECLOTH]	
			
London Tan and Warm Charcoal	Warm Charcoal with London Tan	Canvas	or Jet
			
Ivory	Warm Charcoal with Ivory	Canvas	or Jet

XF SUPERCHARGED

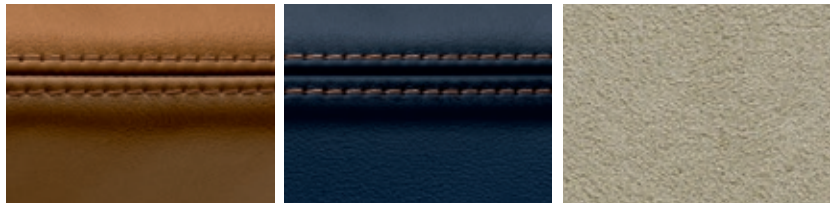
SEAT [SOFT GRAIN LEATHER] UPPER FASCIA WITH STITCH HEADLINING [SUEDECLOTH]



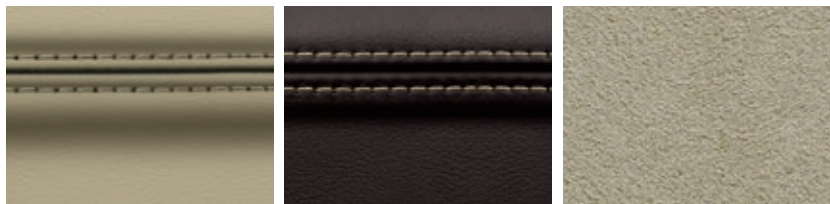
Warm Charcoal Warm Charcoal with Ivory Canvas or Jet



London Tan Warm Charcoal with London Tan Canvas or Jet

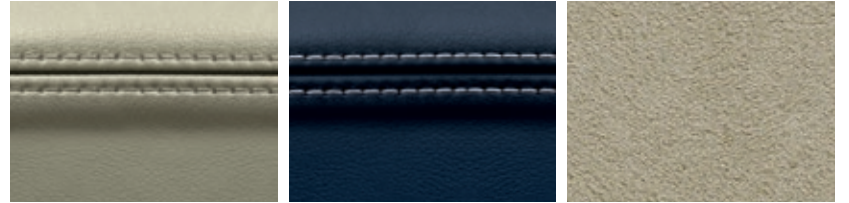


London Tan Navy with London Tan Canvas



Barley Truffle with Barley Canvas

SEAT [SOFT GRAIN LEATHER] UPPER FASCIA WITH STITCH HEADLINING [SUEDECLOTH]



Ivory Navy with Ivory Canvas



Ivory Truffle with Ivory Canvas



Ivory Oyster with Ivory Canvas

XF SUPERCHARGED WITH SPORT INTERIOR PACK

SEAT [SOFT GRAIN LEATHER] UPPER FASCIA WITH STITCH HEADLINING [SUEDECLOTH]



Warm Charcoal

Warm Charcoal with Ivory

Dove or Jet



Red Zone and Warm Charcoal

Warm Charcoal with Red Zone

Dove or Jet



London Tan and Warm Charcoal

Warm Charcoal with London Tan

Canvas or Jet

SEAT [SOFT GRAIN LEATHER] UPPER FASCIA WITH STITCH HEADLINING [SUEDECLOTH]



Ivory

Warm Charcoal with Ivory

Canvas or Jet



Barley

Warm Charcoal with Barley

Canvas or Jet

XFR



Warm Charcoal

Warm Charcoal with Warm Charcoal

Dove or Jet



Warm Charcoal

Warm Charcoal with Ivory

Dove or Jet



Red Zone and Warm Charcoal

Warm Charcoal with Red Zone

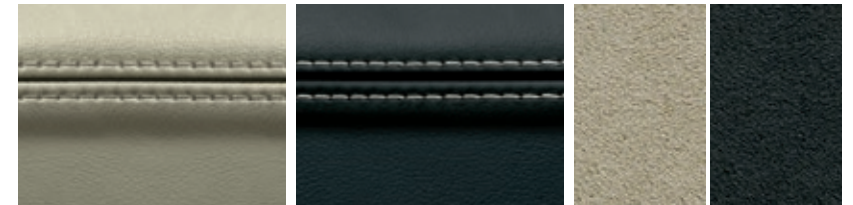
Dove or Jet



London Tan and Warm Charcoal

Warm Charcoal with London Tan

Canvas or Jet



Ivory

Warm Charcoal with Ivory

Canvas or Jet

All seat colors available in soft grain leather.

XFR-S

SEAT - SOFT GRAIN
CARBON LEATHER



Warm Charcoal
with Ivory piping

UPPER FACIA WITH
CONTRAST STITCH
AND PIPING

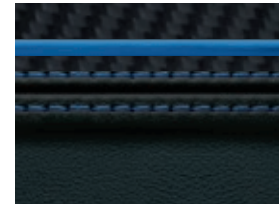


Warm Charcoal
with Ivory

HEADLINING



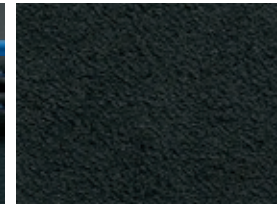
Jet



Warm Charcoal with
Reims Blue piping

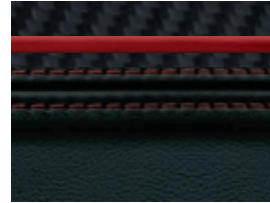


Warm Charcoal
with Reims Blue



Jet

SEAT - SOFT GRAIN
CARBON LEATHER



Warm Charcoal
with Red piping

UPPER FACIA WITH
CONTRAST STITCH
AND PIPING



Warm Charcoal with Red

HEADLINING



Jet

> XF OPTION PACKS

A range of optional style packs is available, providing an opportunity to upgrade your XF even further.



SPORT INTERIOR PACK

Matching the powerful character of the XF, a Sport Interior Pack is available featuring double stitched soft grain leather Sport seats which reshape and adjust to create a perfect fit. From individually fine-tuned lumbar support to powerfully sculpted side bolsters, they deliver exceptional lateral support during hard cornering. With polished metal sports pedals and Piano Black veneer, the Sport Interior Pack is simply stunning.

INTERIOR SHOWN: XF WITH SPORT UPGRADE. RED ZONE AND WARM CHARCOAL SOFT GRAIN LEATHER SEATS WITH RED ZONE CONTRAST STITCH, UPPER FASCIA IN WARM CHARCOAL WITH RED ZONE CONTRAST STITCH AND KNURLED ALUMINUM WITH PIANO BLACK VENEER



BLACK PACK

Add high gloss black finish to front and rear, ranging from window surrounds to front grille and bumper, as well as rear signature blades. The pack also includes 20 inch gloss black wheels (style dependent on model).



AERODYNAMIC PACK

Giving the XF an even more assertive stance and a distinctive new profile, the Aerodynamic Pack includes a trunk spoiler and modified, lower front bumper with a black grille, sculpted rear valance, diffuser and streamlined side sills.



BRING YOUR XF TO LIFE

The XF is the ultimate sports sedan. Beautiful yet powerful, it exploits cutting-edge technology to make handling effortless and driving, an unforgettable experience. Sleek outside, sensuous inside, every feature has been tailored to look after you and think ahead for you.

Visit jaguarusa.com to learn more.

Experience the XF for yourself – visit your local Jaguar retailer.



IMPORTANT NOTICE

Jaguar Land Rover Limited is constantly seeking ways to improve the specification, design and production of its vehicles and alterations take place continually. While every effort is made to produce up-to-date literature, this brochure should not be regarded as an infallible guide to current specifications, nor does it constitute an offer for the sale of any particular vehicle. Distributors and retailers are not agents of Jaguar Land Rover Limited by any express or implied undertaking or representation.

Comparisons are based on manufacturer's own data and testing.

ENVIRONMENTAL INNOVATION AT JAGUAR

Jaguar is proud to continue the company's tradition with its approach to Environmental Innovation. From the choice of lightweight materials and lean production methods to the efficiency of its engines and designs, Jaguar is committed to operating as a more sustainable business and reducing its overall environmental impact.

Jaguar's flagship XJ model was the first in the company to achieve ISO14040, the international standard for vehicle 'life cycle assessment'. This certification measures the environmental impact of XJ from component material sourcing and manufacturing process, through driving 200,000 km. But that's not all. Every new Jaguar vehicle is designed to be 85% recyclable and reusable, in addition to 95% recoverable and reusable, with 10% specifically for energy recovery.

The innovative use of lightweight aluminum on the XJ, F-TYPE, and XK, which incorporates up to 50% recycled material from the manufacturing process of the body structures, provides considerable performance benefits. This includes improved fuel consumption and less CO₂ emissions associated with lighter structures as well as the dynamic performance inherent in its weight saving design.

Jaguar is committed to reducing dependency on fossil fuels, using fewer resources and creating less waste as part of our approach to sustainability excellence.

The company plan includes 25% reduction targets in operating and tailpipe CO₂ emissions, waste to landfill, logistics efficiencies (15%) and water consumption (10%), all based on per vehicle built since 2007. In addition the manufacturing assembly CO₂ emissions of each Jaguar built in the UK since 2009 is 100% offset. For each ton of CO₂ emitted in the assembly process, Jaguar invests in projects that reduce an equivalent ton of CO₂ elsewhere.

Taking into account the company's global sales growth and increased investment in more efficient operating facilities, we are proud to have delivered and in some cases exceeded our Environmental Innovation targets as planned for 2013.

And we are on track to meet our 25% reduction in joint European fleet average tailpipe CO₂ emissions by 2015. Looking forward, we have developed our 2020 vision for sustainable business growth that focuses on continued improvements in tailpipe CO₂ emissions, operational carbon neutrality and zero waste.

To date the company has offset over 6 million tons of CO₂, provided over 4,000 direct jobs in 60 emissions reductions projects in 17 countries and improved the lives of over 1 million people in our global cook stoves emissions reduction program.

But it doesn't stop there. Our manufacturing facilities have been certified to ISO14001 since 1998 and we are credited to Platinum Plus level in the UK's Business in the Community Corporate Responsibility Index.

The Bluetooth® word mark and logos are owned by the Bluetooth SIG, Inc. and any use of such marks by Jaguar Land Rover Limited is under license.

iPod, iPod touch and iPad are trademarks of Apple Inc., registered in the U.S. and other countries.

BlackBerry® is a trademark of Research In Motion Limited and is registered in the U.S. and may be pending or registered in other countries.

Dolby and Pro Logic are registered trademarks of Dolby Laboratories.

Meridian is a trademark of Meridian Audio Limited.

'Trifield' and the 'three fields' device are trademarks of Trifield Productions LTD.

© 2013 Jaguar Land Rover North America, LLC

Jaguar Land Rover North America, LLC
555 MacArthur Boulevard
Mahwah, NJ 07430-2327
JAGUARUSA.COM

October 2013/14MY
JLM/09/02/30/1013



XF

OH