



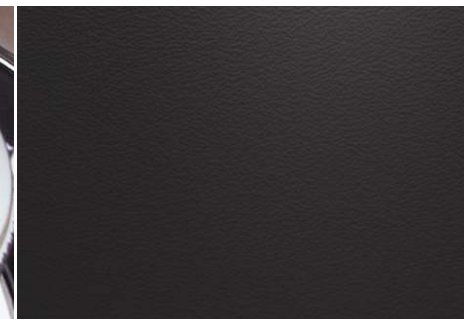
By appointment
to HM The Queen
motor car manufacturers
Bentley Motors Limited
Crewe Cheshire



By appointment
to HRH The Prince of Wales
motor car manufacturers
Bentley Motors Limited
Crewe Cheshire



BENTLEY



PRESENTING

YOUR BENTLEY 2025
BENTAYGA EWB AZURE
V8

YOUR PAINT

Thunder

A new colour, inspired by nature, Thunder is a grey shade with a smoky blue undertone that perfectly captures the latent power and potential of a gathering storm cloud.



YOUR INTERIOR

Interior Colour Split - D in Beluga

Hand-picked from herds that graze high above sea level in Northern Europe, all leather hides used to upholster the Bentayga are naturally free of the insect bites that could otherwise leave blemishes in the leather.





YOUR VENEER



YOUR WHEELS

22" Five Spoke Directional Wheel - Polished

The largest wheels ever made available on a production Bentley, these wheels are machined from a high-strength aluminium forging for optimum strength and lightness. The wheels are handed, ensuring the spokes always face the same direction on both sides of the car.



YOUR DETAILS

EZTRFJQM

The Bentley Commissioning Code allows you to retrieve your configuration at a later time.
Simply select Retrieve from the menu and enter your Code to continue your commissioning experience.

COLOUR AND TRIM



PAINTS

THUNDER

COLOUR SPLIT

INTERIOR COLOUR SPLIT - D



WHEELS

22" FIVE SPOKE DIRECTIONAL WHEEL -
POLISHED



MAIN HIDE

BELUGA



SECONDARY HIDE

BELUGA

PAINTS

BLUES	Thunder	\$0.00
-------	---------	--------

WHEELS

WHEELS	22" Five Spoke Directional Wheel - Polished	\$5,645.00
WHEEL OPTIONS	Self Levelling Wheel Badge - by Mulliner	\$730.00

HIDE

COLOUR SPLIT	Interior Colour Split - D	\$0.00
HIDE	Beluga	\$0.00

VENEERS

PAINTED VENEERS	Piano Black	\$3,210.00
-----------------	-------------	------------

INTERIOR DETAILS

CONTRAST STITCHING	Without Contrast Stitching	\$0.00
CONTRAST STITCHING AND SEAT PIPING	Cricket Ball	\$0.00
HAND CROSS STITCHING - BY MULLINER	Without Hand Cross Stitching	\$0.00
EMBLEM STITCHING	Cricket Ball	\$0.00
AZURE EMBLEMS	Without Emblem Stitching	\$0.00
STEERING WHEEL AND DRIVER CONTROLS	Heated, Single Tone, 3 Spoke, Hide Trimmed Steering Wheel	\$0.00
CARPET OVERMAT BINDING	Without Contrast Binding	\$0.00

OPTIONAL EQUIPMENT

SPECIFICATIONS	Touring Specification	\$0.00
EXTERIOR	Rear Acoustic Privacy Glass	\$1,430.00
CONVENIENCE	LED Welcome Lamps	\$1,220.00
AUDIO AND COMMUNICATION	Bang & Olufsen for Bentley	\$7,880.00
TOTAL OPTIONS		\$20,115.00
TOTAL WITH OPTIONS		\$297,615.00

Accuracy of information on this website and third party websites

We attempt to keep all information on the Bentley Car Configurator up-to-date. The product specifications contained within the Car Configurator, however, are for information purposes only. As we continually enhance our products, alterations in our models or standard or optional equipment may occur. We reserve the right to change these product specifications at any time without notice. For accurate up-to-date information, please contact your nearest or preferred Bentley Motors dealer.

The representation of all exterior paint colours and finishes, all interior colours, textures and surfaces, and all luxury options will vary depending on the screen of your device and the printer you may be using. Please visit your nearest or preferred Bentley Motors dealer for an accurate representation of all Bentley options.

No contract formation

As the content of the Bentley Car Configurator is solely provided for general information purposes, it is not intended to constitute an offer for the sale of any specific goods.

The names 'Bentley', 'Bentayga', 'Continental', 'Flying Spur', the 'B' in wings device are registered trademarks.

Accessories †

Please note, additional fitting fees and local taxes may apply. Please consult your local Retailer for final fitted prices which must then be added to the final price of the vehicle. Some features may not be available in all markets, please contact your retailer for availability.

WLTP

All vehicles are tested according to WLTP technical procedures. Figures shown are for comparability purposes; only compare fuel consumption, CO2 and equivalent electric range figures with other vehicles tested to the same technical procedures. These figures may not reflect real life driving results, which will depend upon a number of factors including the accessories fitted (post-registration), variations in weather, driving styles, vehicle load. More information can be found here : [Bentley Motors](#)

©2024 Bentley Motors Limited