

It's time for a change!!



Basic Oil Service

- ✓ Change Engine Oil (up to 5 qts)
- ✓ Change oil filter
- ✓ Lube chassis
- ✓ Perform multipoint inspection

starting at **\$38.95**

PLUS TAX/SS

Gold Synthetic Oil Service

- ✓ Change Engine Oil (up to 5 qts)
- ✓ Upgrade to synthetic oil
- ✓ Change oil filter
- ✓ Lube Chassis
- ✓ Perform multipoint inspection

starting at **\$79.95**

PLUS TAX/SS

Platinum

3,750 Mile Oil Service

- ✓ Change Engine Oil (up to 5 qts)
- ✓ Change oil filter
- ✓ Lube chassis
- ✓ Perform multipoint inspection
- ✓ Install BG MOA oil conditioner
- ✓ Complimentary Roadside Assistance



starting at **\$49.95**

PLUS TAX/SS

Platinum Service qualifies for
BG Lifetime Protection Plan Coverage.
See advisor for details.

Prices subject to change without notice.
Prices as of 2/1/2012



BERTERA

AUTO GROUP



Bertera Subaru of Hartford
111 Weston St, Hartford, CT 06120
(860) 895-6500
www.berteramotors.com

Dear Bertera Customer,

Thank you for the opportunity to service your vehicle. At Bertera Auto Group we have used our years of experience to develop a Recommended Maintenance Plan that compliments the manufacturer's minimum service requirements with additional recommended services to keep your vehicle in premium condition here in the Northeast.

The Northeastern United States is one of the harshest environments in which to operate a vehicle. We experience the heat of the South and the cold of the North. Our roads are sometimes smooth but often pot-holed and rough. We can be driving at or above the speed limit one minute, and stuck in stop-and-go the next. Hilly terrain, ethanol in our fuel, towing, snow and dusty environments only add to the stress on your vehicle.

Here at Bertera Auto Group, our Factory Trained Service Technicians are proficient in the use of our state of the art diagnostic and service equipment. They are up to the minute with manufacturer's information and are able to service your vehicle quickly and completely. Our websites offer easy, 24/7 access to our service departments allowing you the ability to make your own appointment, online, at any time of the day. Please also use the site to take advantage of our web specials and discounts.

Following our Recommended Maintenance Plan will provide additional benefits that include a "lifetime protection plan" coverage for some serviced components.

Again, thank you for trusting Bertera Auto Group Service. We look forward to serving you and servicing your vehicle.

Sincerely,

The Bertera Auto Group Service Teams

Bertera Subaru of Hartford

111 Weston St, Hartford, CT 06120

(860) 895-6500

www.berteramotors.com

ADDITIONAL SERVICES

BG COOLING SYSTEM SERVICE

Service Need: Coolant depleted of buffering ingredients becomes extremely corrosive, literally eating holes in cooling system components. By-products of corrosion damage, as well as rust and scale, clog passageways that conduct water through the radiator and choke off flow. This may result in an over-heated engine that may be damaged beyond repair.

Solution: The entire cooling system is first cleaned and then all debris and worn out coolant is completely flushed from the system. Fresh premium coolant is added together with conditioners to prevent rust and corrosion. BG Cooling System Sealer is also included to prevent leaks. Your heater core and water pump will be protected and last longer while your engine will run cooler in extreme temperatures.



Rust, scale & sludge can plug cooling system fins, preventing proper circulation of coolant.

Includes up to 1 gallon of antifreeze

Severe corrosion which can occur when conditioners that protect the cooling system have been depleted.



BG TRANSMISSION SERVICE

Service Need: After 30,000 miles, transmission fluid begins to show its age as it turns brown in color and oxidizes due to the combination of time and heat. Deposits begin to form around the transmission's many moving parts, resulting in valves that stick and gears that slip or are sluggish and chatter as they shift.

Solution: Rather than just removing the fluid found in the bottom of the pan, the entire transmission is cleaned with the use of special equipment. The transmission and its torque converter have all of their old contaminated fluid removed and replaced with new fluid. Premium conditioners are also added.

One of the hardest working parts of your vehicle will shift smoothly and effortlessly for many more trouble-free miles.



Valve body spool with heavy deposit build-up.

Valve body spool after BG Transmission Service.



BG BATTERY SERVICE

Service Need: With time corrosion accumulates on the battery posts and terminals to the degree that this build-up begins to drain power from the battery. Battery failure is the #1 culprit for calls made requesting roadside assistance.

Solution: A battery cleaner and leak detector is applied after a thorough cleaning and inspection. Anti-corrosion BG Battery Terminal Protectors are installed and the battery posts, terminals and case are sealed. Severe cases may require terminal replacement.



Battery terminal with corrosion build-up



Battery terminal after BG Battery Service

ADDITIONAL SERVICES

BG POWER STEERING SERVICE

Service Need: The power steering pump produces high pressure between 800-2000 lbs, with high heat. This leads to fluid breakdown and failure. Symptoms include groaning and whining noises, erratic steering and pump leaks.

Solution: A powerful cleaner suspends and dissolves varnish and gums in the power steering system and then all of the old fluid is flushed and replaced with new high-tech power steering fluid for both conventional sector and rack and pinion. The benefit will be a quieter operating, longer lasting power steering system.



Grooves are worn into the soft metal of the spool valve housing by hardened seals. Metallic debris from such wear accumulates in the fluid causing premature component failure!



Valve body spool after BG Transmission Service.

BG FUEL / AIR INDUCTION SYSTEM SERVICE

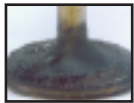
Service Need: Deposits accumulate on intake valves, injectors, ports, fuel injectors and combustion chambers causing loss of power, rough idle, hesitation, misfire, ping- ing, knocking, fuel economy and hard starting.

Solution:

- Clean fuel injectors
- Clean throttle body
- Clean plenum and air intake
- Clean intake valves and ports
- Remove combustion chamber deposits
- Correct balance of fuel and air system

Result:

- Reduced emissions
- Restored horse power
- Increased fuel economy
- Starts and idles smooth and runs quieter



Intake valve with heavy deposit build-up.

3 PART SERVICE

Intake valve after service.



BG BRAKE FLUID EXCHANGE SERVICE

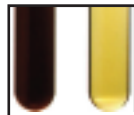
Service Need: Deposits build up, fluid breaks down. This shortens the life of your brakes.

Solution: Remove contaminated fluid, replace with new fluid to prevent corrosion.

Harmful deposits and varnish build-up – resulting from worn-out, oxidized brake fluid – are apparent on this brake master cylinder piston assembly.



Brake fluid before (left) and after (right) service.



BERTERA'S PLATINUM SERVICE & INSPECTION

REQUIRED EVERY 3,750 MILES**

- Change engine oil and filter
- Replace crush washer
- Inspect fluid levels
- Inspect tire wear and reset tire pressures
- Check operation of all lights and controls
- Lubricate all hinges, locks and latches
- Inspect front and rear brakes
- Inspect suspension components, tie rod ends, steering gear box and drive shaft boots
- Inspect brake hoses and lines, exhaust system, fuel lines and underbody
- Inspect cooling system hoses/connections and coolant condition
- Inspect drive belts
- Perform multipoint inspection and battery test

** Required to maintain Tires for Life Rewards Program

OPTIONAL AT THIS MILEAGE

- Install BG engine protection kit
- May qualify for LIFETIME PROTECTION PLAN (See service advisor for details)



PLEASE NOTIFY YOUR SERVICE ADVISOR OF ANY CONCERNS OR ADJUSTMENTS

R.O.# _____ Miles _____

Date _____ Dealer Stamp _____

7,500 MILE SERVICE & INSPECTION

INCLUDES PLATINUM SERVICE PLUS . . .

- Rotate tires

OPTIONAL AT THIS MILEAGE

- Install BG engine protection kit
- May qualify for LIFETIME PROTECTION PLAN (See service advisor for details)



** Required to maintain Tires for Life Rewards Program

R.O.# _____ Miles _____

Date _____ Dealer Stamp _____

Prices subject to change without notice

11,250 MILE SERVICE & INSPECTION

INCLUDES PLATINUM SERVICE PLUS . . .



OPTIONAL AT THIS MILEAGE

- Install BG engine protection kit
- May qualify for LIFETIME PROTECTION PLAN (See service advisor for details)
- ** Required to maintain Tires for Life Rewards Program

R.O.# _____ Miles _____

Date _____ Dealer Stamp _____

15,000 MILE SERVICE & INSPECTION

INCLUDES PLATINUM SERVICE PLUS . . .



- Replace cabin air filter
- Inspect air filter
- Rotate tires

OPTIONAL AT THIS MILEAGE

- Install BG engine protection kit
- May qualify for LIFETIME PROTECTION PLAN (See service advisor for details)

** Required to maintain Tires for Life Rewards Program

R.O.# _____ Miles _____

Date _____ Dealer Stamp _____

18,750 MILE SERVICE & INSPECTION

INCLUDES PLATINUM SERVICE



OPTIONAL AT THIS MILEAGE

- Install BG engine protection kit
- May qualify for LIFETIME PROTECTION PLAN (See service advisor for details)
- ** Required to maintain Tires for Life Rewards Program

R.O.# _____ Miles _____

Date _____ Dealer Stamp _____

120,000 MILE SERVICE & INSPECTION

INCLUDES PLATINUM SERVICE PLUS . . .



- Replace coolant
- Replace brake fluid
- Replace cabin air filter
- Replace air filter
- Replace spark plugs (non-platinum / standard only)
- Replace PCV valve
- Replace transmission fluid
- Replace differential fluids (AWD & 4x4 only)
- Replace transfer case fluids (AWD & 4x4 only)
- Install BG engine protection kit
- May qualify for LIFETIME PROTECTION PLAN (See service advisor for details)
- Rotate tires
- ** Required to maintain Tires for Life Rewards Program

OPTIONAL AT THIS MILEAGE

- Balance 4 tires
- Perform BG Coolant fluid exchange service
- Perform front & rear wheel alignment (Required to maintain Tires for Life Rewards Program)

R.O.# _____ Miles _____

Date _____ Dealer Stamp _____



For Engines and Fuel System

Initial Qualifications: Under 75,000 miles/120,000 km

Renewable for the lifetime of the vehicle.

• Engine Protection

Oil change with BG MOA® must be performed at least every 5,000 miles/8,000 km.

• Engine & Fuel Protection

Oil change with BG MOA® and BG CF5® must be performed at least every 5,000 miles/8,000 km.

All services include the Protection Plan for qualified vehicles.

Ask your Service Advisor for complete details.

108,750 MILE SERVICE & INSPECTION

INCLUDES PLATINUM SERVICE PLUS . . . 

- Install BG engine protection kit
- May qualify for LIFETIME PROTECTION PLAN (See service advisor for details)

**** Required to maintain Tires for Life Rewards Program**

R.O.# _____ Miles _____

Date _____ Dealer Stamp _____

112,500 MILE SERVICE & INSPECTION

INCLUDES PLATINUM SERVICE PLUS . . . 

- Install BG engine protection kit
- May qualify for LIFETIME PROTECTION PLAN (See service advisor for details)
- Rotate tires

**** Required to maintain Tires for Life Rewards Program**

R.O.# _____ Miles _____

Date _____ Dealer Stamp _____

116,250 MILE SERVICE & INSPECTION

INCLUDES PLATINUM SERVICE PLUS . . . 

- Install BG engine protection kit
- May qualify for LIFETIME PROTECTION PLAN (See service advisor for details)

**** Required to maintain Tires for Life Rewards Program**

R.O.# _____ Miles _____

Date _____ Dealer Stamp _____

22,500 MILE SERVICE & INSPECTION

INCLUDES PLATINUM SERVICE PLUS . . . 

- Rotate tires

OPTIONAL AT THIS MILEAGE

- Install BG engine protection kit
- May qualify for LIFETIME PROTECTION PLAN (See service advisor for details)

**** Required to maintain Tires for Life Rewards Program**

R.O.# _____ Miles _____

Date _____ Dealer Stamp _____

26,250 MILE SERVICE & INSPECTION

INCLUDES PLATINUM SERVICE PLUS . . . 

- Install BG engine protection kit
- May qualify for LIFETIME PROTECTION PLAN (See service advisor for details)

**** Required to maintain Tires for Life Rewards Program**

R.O.# _____ Miles _____

Date _____ Dealer Stamp _____

30,000 MILE SERVICE & INSPECTION

INCLUDES PLATINUM SERVICE PLUS . . .



- Inspect coolant
- Replace brake fluid
- Replace cabin air filter
- Replace air filter
- Replace spark plugs (non-platinum / standard only)
- Replace PCV valve
- Replace transmission fluid
- Replace differential fluids (AWD & 4x4 only)
- Replace transfer case fluids (AWD & 4x4 only)
- Install BG engine protection kit
- May qualify for LIFETIME PROTECTION PLAN (See service advisor for details)
- Rotate tires

**** Required to maintain Tires for Life Rewards Program**

OPTIONAL AT THIS MILEAGE

- Balance 4 tires
- Perform BG Coolant fluid exchange service
- Perform front & rear wheel alignment (Required to maintain Tires for Life Rewards Program)

R.O.# _____ Miles _____

Date _____ Dealer Stamp _____

33,750 MILE SERVICE & INSPECTION

INCLUDES PLATINUM SERVICE PLUS . . .



- Perform BG Fuel System Service
- Install BG engine protection kit
- May qualify for LIFETIME PROTECTION PLAN (See service advisor for details)

**** Required to maintain Tires for Life Rewards Program**

R.O.# _____ Miles _____

Date _____ Dealer Stamp _____

97,500 MILE SERVICE & INSPECTION

INCLUDES PLATINUM SERVICE PLUS . . .



- Perform Battery Service
- Perform BG Fuel System Service
- Install BG engine protection kit
- May qualify for LIFETIME PROTECTION PLAN (See service advisor for details)
- Rotate tires

**** Required to maintain Tires for Life Rewards Program**

R.O.# _____ Miles _____

Date _____ Dealer Stamp _____

101,250 MILE SERVICE & INSPECTION

INCLUDES PLATINUM SERVICE PLUS . . .



- Install BG engine protection kit
- May qualify for LIFETIME PROTECTION PLAN (See service advisor for details)

**** Required to maintain Tires for Life Rewards Program**

R.O.# _____ Miles _____

Date _____ Dealer Stamp _____

105,000 MILE SERVICE & INSPECTION

INCLUDES PLATINUM SERVICE PLUS . . .



- Replace cabin air filter
- Perform BG Power Steering Fluid Exchange Service
- Install BG engine protection kit
- May qualify for LIFETIME PROTECTION PLAN (See service advisor for details)
- Rotate tires

**** Required to maintain Tires for Life Rewards Program**

R.O.# _____ Miles _____

Date _____ Dealer Stamp _____

90,000 MILE SERVICE & INSPECTION

INCLUDES PLATINUM SERVICE PLUS . . . 

- Replace coolant
 - Replace brake fluid
 - Replace cabin air filter
 - Replace air filter
 - Replace spark plugs (non-platinum / standard only)
 - Replace PCV valve
 - Replace transmission fluid
 - Replace differential fluids (AWD & 4x4 only)
 - Replace transfer case fluids (AWD & 4x4 only)
 - Install BG engine protection kit
 - May qualify for LIFETIME PROTECTION PLAN (See service advisor for details)
 - Rotate tires
- ** Required to maintain Tires for Life Rewards Program**

OPTIONAL AT THIS MILEAGE

- Balance 4 tires
- Perform BG Coolant fluid exchange service
- Perform front & rear wheel alignment (Required to maintain Tires for Life Rewards Program)

R.O.# _____ Miles _____

Date _____ Dealer Stamp _____

93,750 MILE SERVICE & INSPECTION

INCLUDES PLATINUM SERVICE PLUS . . . 

- Install BG engine protection kit
 - May qualify for LIFETIME PROTECTION PLAN (See service advisor for details)
- ** Required to maintain Tires for Life Rewards Program**

R.O.# _____ Miles _____

Date _____ Dealer Stamp _____

37,500 MILE SERVICE & INSPECTION

INCLUDES PLATINUM SERVICE PLUS . . . 

- Perform Battery Service
 - Install BG engine protection kit
 - May qualify for LIFETIME PROTECTION PLAN (See service advisor for details)
 - Rotate tires
- ** Required to maintain Tires for Life Rewards Program**

R.O.# _____ Miles _____

Date _____ Dealer Stamp _____

41,250 MILE SERVICE & INSPECTION

INCLUDES PLATINUM SERVICE PLUS . . . 

- Install BG engine protection kit
 - May qualify for LIFETIME PROTECTION PLAN (See service advisor for details)
- ** Required to maintain Tires for Life Rewards Program**

R.O.# _____ Miles _____

Date _____ Dealer Stamp _____

45,000 MILE SERVICE & INSPECTION

INCLUDES PLATINUM SERVICE PLUS . . . 

- Replace cabin air filter
- Install BG engine protection kit
- May qualify for LIFETIME PROTECTION PLAN (See service advisor for details)
- Rotate tires
- Perform BG Power Steering Fluid Exchange Service

**** Required to maintain Tires for Life Rewards Program**

R.O.# _____ Miles _____

Date _____ Dealer Stamp _____

48,750 MILE SERVICE & INSPECTION

INCLUDES PLATINUM SERVICE PLUS . . .

- Install BG engine protection kit
- May qualify for LIFETIME PROTECTION PLAN (See service advisor for details)
- ** Required to maintain Tires for Life Rewards Program

R.O.# _____ Miles _____

Date _____ Dealer Stamp _____

52,500 MILE SERVICE & INSPECTION

INCLUDES PLATINUM SERVICE PLUS . . .

- Install BG engine protection kit
- May qualify for LIFETIME PROTECTION PLAN (See service advisor for details)
- Rotate tires
- ** Required to maintain Tires for Life Rewards Program

R.O.# _____ Miles _____

Date _____ Dealer Stamp _____

56,250 MILE SERVICE & INSPECTION

INCLUDES PLATINUM SERVICE PLUS . . .

- Install BG engine protection kit
- May qualify for LIFETIME PROTECTION PLAN (See service advisor for details)
- ** Required to maintain Tires for Life Rewards Program

R.O.# _____ Miles _____

Date _____ Dealer Stamp _____

78,750 MILE SERVICE & INSPECTION

INCLUDES PLATINUM SERVICE PLUS . . .

- Install BG engine protection kit
- May qualify for LIFETIME PROTECTION PLAN (See service advisor for details)
- ** Required to maintain Tires for Life Rewards Program

R.O.# _____ Miles _____

Date _____ Dealer Stamp _____

82,500 MILE SERVICE & INSPECTION

INCLUDES PLATINUM SERVICE PLUS . . .

- Install BG engine protection kit
- May qualify for LIFETIME PROTECTION PLAN (See service advisor for details)
- Rotate tires
- ** Required to maintain Tires for Life Rewards Program

R.O.# _____ Miles _____

Date _____ Dealer Stamp _____

86,250 MILE SERVICE & INSPECTION

INCLUDES PLATINUM SERVICE PLUS . . .

- Install BG engine protection kit
- May qualify for LIFETIME PROTECTION PLAN (See service advisor for details)
- ** Required to maintain Tires for Life Rewards Program

R.O.# _____ Miles _____

Date _____ Dealer Stamp _____

67,500 MILE SERVICE & INSPECTION

INCLUDES PLATINUM SERVICE PLUS . . . 

- Perform Battery Service
 - Perform BG Fuel System Service
 - Install BG engine protection kit
 - May qualify for LIFETIME PROTECTION PLAN (See service advisor for details)
 - Rotate tires
- ** Required to maintain Tires for Life Rewards Program**

R.O.# _____ Miles _____

Date _____ Dealer Stamp _____

71,250 MILE SERVICE & INSPECTION

INCLUDES PLATINUM SERVICE PLUS . . . 

- Install BG engine protection kit
 - May qualify for LIFETIME PROTECTION PLAN (See service advisor for details)
- ** Required to maintain Tires for Life Rewards Program**

R.O.# _____ Miles _____

Date _____ Dealer Stamp _____

75,000 MILE SERVICE & INSPECTION

INCLUDES PLATINUM SERVICE PLUS . . . 

- Replace cabin air filter
 - Perform BG Power Steering Fluid Exchange Service
 - Install BG engine protection kit
 - May qualify for LIFETIME PROTECTION PLAN (See service advisor for details)
 - Rotate tires
- ** Required to maintain Tires for Life Rewards Program**

R.O.# _____ Miles _____

Date _____ Dealer Stamp _____

60,000 MILE SERVICE & INSPECTION

INCLUDES PLATINUM SERVICE PLUS . . . 

- Replace coolant
 - Replace brake fluid
 - Replace cabin air filter
 - Replace air filter
 - Replace spark plugs (non-platinum / standard only)
 - Replace PCV valve
 - Replace transmission fluid
 - Replace differential fluids (AWD & 4x4 only)
 - Replace transfer case fluids (AWD & 4x4 only)
 - Install BG engine protection kit
 - May qualify for LIFETIME PROTECTION PLAN (See service advisor for details)
 - Rotate tires
- ** Required to maintain Tires for Life Rewards Program**

OPTIONAL AT THIS MILEAGE

- Balance 4 tires
- Perform BG Coolant fluid exchange service
- Perform front & rear wheel alignment (Required to maintain Tires for Life Rewards Program)

R.O.# _____ Miles _____

Date _____ Dealer Stamp _____

63,750 MILE SERVICE & INSPECTION

INCLUDES PLATINUM SERVICE PLUS . . . 

- Install BG engine protection kit
 - May qualify for LIFETIME PROTECTION PLAN (See service advisor for details)
- ** Required to maintain Tires for Life Rewards Program**

R.O.# _____ Miles _____

Date _____ Dealer Stamp _____

BERTERA AUTO GROUP **SERVICE REWARDS**



Dear Customer,
Thank you for joining Bertera Auto Group MyAutoPoints program!

You will now be able to enjoy all the benefits that come with being a Rewards Member:

Earning Loyalty Points is Easy!

Earn 1 Loyalty Reward Point for every \$1 spent on Parts and Labor.
Earn 300 points at the time of your New or Used Vehicle purchase.
Earn 500 points for each customer referral that leads to a sale.

Applying your Points is just as Easy!

Just print and redeem Loyalty Points for future services.
Receive exclusive valuable Loyalty Member only coupons.
Enjoy Complimentary use of Shuttle Service
Members qualify for a 10% discount in our Parts Department Members can apply up to 3000 points towards your next Vehicle Purchase.
Manage and redeem your rewards at www.myautopoints.com.

Your login is: _____

Your password is: _____

Should you have any further questions or concerns you can contact our Customer Care Center at (413) 734-4964 to speak to a Customer Service Representative.

Again, thank you for choosing Bertera Auto Group for your motoring needs.

Sincerely,

Dealership Manager
Bertera Auto Group

Note: A valid email address is required to participate. Vehicle purchase is not required to enroll in the MyAutoPoints program.

PRO TEC TIRES FOR LIFE REWARD

HOW YOU MAY QUALIFY:

Purchase a new or used qualified vehicle from this Bertera Dealership and your automatically enrolled. You must bring your eligible vehicle to this dealership and have already performed all previously recommended **BERTERA MAINTENANCE** services as described and outlined in our Service Department Maintenance Guide (see your service advisor for a copy of the specific requirements and terms and conditions).

All **BERTERA MAINTENANCE Services** must have been performed at this Dealership. All **BERTERA MAINTENANCE Services** must have been performed within STRICT accordance to the mileage intervals outlined in our **Service Department Maintenance Guide**. The eligible vehicle must have been driven a minimum of 20,000 miles from original date of sale mileage.

Eligible tires must be worn evenly and have 3/32" or less remaining tread depth. Eligible Tires must have been rotated per our BERTERA MAINTENANCE Services.

FAQ

Is there a cost to be enrolled in the Pro Tec Tires for Life Reward program?

No, This is an optional program for which there is no fee or charge

If I miss a service will I be eligible for Tire reimbursement?

No, all Platinum services must be completed

Is there a grace period between service intervals that is acceptable and reasonable?

Yes, a grace period of 500 miles or 1 month is permitted

Can I service my car at another repair facility and still be eligible?

No, all Platinum services must be performed at this Dealership

Will a tire failure due to a Road Hazard be replaced at no cost?

No, Road Hazards are not eligible. Optional Road Benefit is available for purchase.

If the tires wear unevenly will I be eligible for replacement tires?

No, failure to maintain proper alignment and tire pressure will result in denial of reimbursement

Are all vehicles sold by the Bertera Dealerships eligible for the Pro Tec Tires for Life Program?

No, some vehicles require specific services not available at our facilities

Do I have to return to this dealership to apply for Tire reimbursement?

Yes, prior authorization is required and our service team will aid in the processing of each claim

What is the maximum amount reimbursed for an eligible tire?

The maximum reimbursement per tire is the lesser of the actual cost or \$125 per tire

Will I be reimbursed for the cost of mounting, balancing and valve stems?

No, the customer is responsible for the cost of mounting, balancing and valve stems

Does the Dealership determine if I qualify for tire (s) reimbursement?

No, all claims are adjusted by the Protec Claims Administrator listed on the agreement

Will the dealership notify me when a service is due?

No, it is the customers responsibility to schedule and perform the required BERTERA MAINTENANCE services

The above information is for clarification purposes only and does not constitute a contract. This is not a guarantee, warranty or vehicle service contract. Refer to the original Protec Tires for Life Reward Agreement provided to you at time of delivery for specific terms and conditions. The Protec Tires for Life Reward Program is complementary and there is no fee or charge and has no cash value. Participation in our Service Rewards Programs is optional.