

2013 **EDGE**





The Edge. Powerfully advanced.

Driven by your choice of 3 smart engines, Ford Edge is one amazingly capable crossover. Its standard 3.5L Ti-VCT V6 delivers unsurpassed V6 hwy mileage of up to 27 mpg.¹ Our remarkable 2.0L EcoBoost® engine² gives you plenty of low-end torque for acceleration and passing, plus up to 30 mpg hwy.¹ And the 305-horsepower 3.7L Ti-VCT V6 on Edge Sport is the most powerful V6 in its class. This year, we made it even easier for you to stay connected to calls, music and more with both hands on the wheel.² We also added a new SEL Appearance Package² with eye-catching 20" wheels. Available in all-wheel drive² or front-wheel drive, the 2013 Ford Edge can help you maintain your cruising distance,² change lanes² and back out of parking spaces.²

Limited. Mineral Gray Metallic. Available equipment. SEL. Deep Impact Blue Metallic. SEL Appearance Package. Available equipment.

¹EPA-estimated, FWD. 19 city/27 hwy/22 combined mpg on 3.5L. 21 city/30 hwy/24 combined mpg on 2.0L. Class is Midsize Utilities vs. 2012 competitors.

²Available feature.

2013 **EDGE**
ford.com





Turbocharge your day. Efficiently.

Get up and go in Edge with our state-of-the-art, turbocharged, direct-injection 2.0L EcoBoost® I-4 engine¹ and 6-speed automatic transmission. It helps Edge deliver up to 30 mpg hwy² and travel over 500 miles per tank. Plus, it produces plenty of low-end torque for acceleration on demand. According to *CarandDriver.com*, "There's virtually no turbo lag, so you get power when you want it for executing swift, safe passes...."³ Our new active grille shutters, included with the EcoBoost engine, help Edge make itself even more aerodynamic and fuel efficient. Spirited and smart – that's Edge with EcoBoost.



Limited. Tuxedo Black Metallic. Available equipment.

¹Available feature. ²EPA-estimated 21 city/30 hwy/24 combined mpg, 18-gal. fuel tank. ³*CarandDriver.com*, August 2011.

2013 **EDGE**
ford.com





SYNC. Say the word. Stay connected.

Voice-activated Ford SYNC^{®1} makes it easy to take charge of your busy life on the go. No more searching for your phone. No device on your ear. Once paired, SYNC recognizes your phone and transfers your contacts to support voice calling. It also plays music from your phone, MP3, USB or iPod.[®] In fact, any device with Bluetooth[®] capability can stream audio from sources like iHeartRadio[®], Pandora[®] internet radio and many more. Just touch a button on the steering wheel and say things like "Call: the office," or "Play genre: Jazz." SYNC also offers 911 Assist[®], and with an activated SYNC Services account you get business searches, turn-by-turn driving directions, local movie times and more. Personalize it at ford.com/sync.

Limited. Charcoal Black interior. SYNC with MyFord Touch.[®] Available equipment.

¹Available feature. Driving while distracted can result in loss of vehicle control. Only use mobile phones and other devices, even with voice commands, when it is safe to do so. SYNC Services is available on most vehicles and may require a subscription. Traffic alerts and turn-by-turn directions available in select markets. Message and data rates may apply. Not all features are compatible with all phones.

2013 **EDGE**
ford.com



Merge your life with your drive. Seamlessly.

Simpler graphics. Faster touch-screen responses. Easier-to-use controls. These are just a few of the latest improvements we've made to our voice-activated SYNC® with MyFord Touch.®¹ Get ultimate control over your phone, entertainment, navigation and climate. MyFord Touch includes SYNC Services,¹ an 8" LCD touch screen, a media hub, 2 LCD screens in the gauge cluster and familiar 5-way controls on the steering wheel. The system recognizes literally thousands of voice commands – everything from "Destination nightlife" to "I'm hungry." So you can use it to find new favorites with both hands on the wheel and your eyes on the road.



Stream your favorites on the go.

Whether you prefer apps or your own MP3s, Bluetooth® streaming audio lets you access content from your smartphone with no need for cables. You can also access files from a USB drive, an SD card, a portable hard drive or almost any other device you plug in to the MyFord Touch media hub.

Tag tunes to buy later.

Hear a song you like? With HD Radio™ Technology,² you can "Tag" it for purchase later at the iTunes® Store. This feature, paired with the 12-speaker Audio System from Sony,² also delivers crystal-clear, digital sound for AM/FM channels and brings you new local FM channels.

Reroute and arrive on time.

Our voice-activated Navigation System² includes a 6-month trial subscription to SiriusXM Satellite Radio, Traffic and Travel Link that gives you over 130 channels of premium entertainment, plus live infotainment services. You can use it to look up local fuel prices, check local and national weather, receive alerts on traffic-related incidents, get alternate route suggestions and much more.

Listen to your text messages.

Do your friends prefer texting? Let SYNC handle it. The system can read their text messages aloud to you from your paired phone. It even translates commonly used emoticons and abbreviations, such as :-)) and LOL, so you can keep your eyes on the road.

¹Available feature. Driving while distracted can result in loss of vehicle control. Only use SYNC/MyFord Touch/other devices, even with voice commands, when it is safe to do so. Some features may be locked out while the vehicle is in gear. SYNC Services is available on most vehicles and may require a subscription. Traffic alerts and turn-by-turn directions available in select markets. Message and data rates may apply. Not all features are compatible with all phones. ²Available feature.



Let Edge maintain this gap for you.

Space is a good thing. Especially on the highway. When you choose adaptive cruise control and collision warning with brake support,¹ Edge uses radar sensors to help maintain your choice of 4 preset gaps from the vehicle in front of you. It also uses those same front sensors to alert you to a potential collision. If one is detected, the system flashes a warning across your windshield, sounds an alarm, pre-charges the brakes and increases brake-assist sensitivity to provide full responsiveness when you do brake.

Limited. Kodiak Brown Metallic. Available equipment.

¹Available feature.

2013 **EDGE**
ford.com



It even illuminates obstacles you may not notice.

Whether you're backing out of a spot or preparing to pass, the advanced technology in your new Edge is ready to assist. Just shift into Reverse and the rear view camera¹ shows you what's behind the vehicle. As you slowly back up, BLIS[®] (Blind Spot Information System) with cross-traffic alert¹ is designed to scan for approaching vehicles. If any are detected, the system alerts you with a warning sound, a message center notice and an amber light in the corresponding sideview mirror.² While you're driving, the same light alerts you if traffic is detected in a blind spot, so you'll know when it's not safe to change lanes.



¹Available feature. ²BLIS replaces standard integrated blind spot mirrors.



Perfect your position.

Luxurious leather-trimmed, heated front seats featuring 10-way power adjustment are standard on Edge Limited, making it easy for you and your front passenger to find your optimum positions. With your seat just the way you like it, you can adjust the standard tilt/telescoping steering column to match your driving style too. Graceful lines effortlessly guide your eyes along the dash and down the flow-through center console, merging into a singularly inviting interface. Standard steering wheel-mounted controls for the cruise, audio and vehicle menus let you make adjustments with both hands on the wheel. Be sure to encourage your fortunate friends in back to stretch their legs and relax – taking full advantage of 2nd-row leg room that's unsurpassed in the class.¹

Limited. Charcoal Black leather trim. Available equipment.

¹Class is Midsize Utilities vs. 2012 competitors.

2013 **EDGE**
ford.com





Drive the best. Most powerful V6 in the class!¹

305 horsepower. 280 lb.-ft. of torque. 26 mpg hwy.² Get it all courtesy of the 3.7L Ti-VCT V6 engine under the hood of Edge Sport. Racing-style paddle shifters give you ultimate control of its 6-speed SelectShift Automatic[®] transmission. A sport-tuned suspension helps it deliver the engaging steering and responsive handling you crave in the corners, while maintaining a comfortable overall ride. Outside, aggressive front and rear fascias combine with a bold black grille, unique headlamp treatments, oval-shaped chrome exhaust tips and jaw-dropping 22" aluminum wheels to give Edge Sport the look that backs it all up.



Sport. Ruby Red Metallic Tinted Clearcoat. Available equipment.

¹Class is Midsize Utilities vs. 2012 competitors. ²EPA-estimated 19 city/26 hwy/22 combined mpg, FWD.

2013 **EDGE**
ford.com





Proceed confidently. It's a 2012 IIHS "Top Safety Pick!"

For lots of solid reasons. Including our standard AdvanceTrac® with RSC® (Roll Stability Control™). When you encounter wet or slippery conditions in Edge, this system automatically enhances vehicle control to help you keep all 4 wheels firmly planted.¹ The standard sideview mirrors each feature an integrated convex blind spot mirror that helps alert you to vehicles and objects nearby so you can avoid them. Our advanced Personal Safety System,TM front-seat side airbags and Safety Canopy® System are all standard equipment. Ford SYNC®² with 911 Assist® uses your phone to call 911, and can even give the operator an urgent message for you, in the event of airbag deployment or fuel pump shutoff.³ It's no wonder Edge has earned "Top Safety Pick" – the highest possible rating from the Insurance Institute for Highway Safety (IIHS) – 2 years in a row (2011–2012).⁴

SEL. Ingot Silver Metallic. Available equipment.

¹Remember that even advanced technology cannot overcome the laws of physics. It's always possible to lose control of a vehicle due to inappropriate driver input for the conditions. ²Available feature. ³The vehicle's electrical system (including the battery), the wireless service provider's signal and a connected mobile phone must all be available and operating for 911 Assist to function properly. These systems may become damaged in a crash. The paired mobile phone must be connected to SYNC, and the 911 Assist feature enabled, in order for 911 to be dialed. ⁴Vehicles built after February 2011.

2013 **EDGE**
ford.com



Well beyond bells and whistles.



Always on the go? Intelligent Access with push-button start gets you inside, and on the move, in a hurry. Socially active? Reinforce your life-of-the-party status with an amazing sound system. Then give your friends their own Wi-Fi® hotspot¹ to surf while you drive by plugging your smartphone or USB mobile broadband modem into the MyFord Touch® media hub. Let the power liftgate do the lifting for you – at the touch of a button. And treat yourself to sweeping overhead views. It's your Edge. Equip it to reflect your style.

Intelligent Access with push-button start²
Audio System from Sony® with HD Radio™ Technology²
MyFord Touch media hub²
Power liftgate²
Panoramic Vista Roof®²

¹Requires in-vehicle USB mobile broadband connection, PAN-supported mobile device or proximity to an outside wireless hotspot. ²Available feature.



Create a more meaningful driving experience: Connect with Ford Custom Accessories for authentic personalization possibilities. The cost of select accessories – ordered and purchased at the time you buy or lease your Edge – can be rolled into your monthly payment. And coverage for select accessories falls under the New Vehicle Limited Warranty that way too. See your dealer for details.

SE in White Suede customized with painted-black grille insert, smoked hood and side window deflectors, keyless entry keypad, Remote Start System, roof side rails and crossbars, plus roof-mounted cargo box by THULE®¹

Dual head restraint DVD by INVISION™¹

All-weather floor mats

Illuminated door sill plates

Cargo security shade, cargo area protector and rear bumper protector

¹Ford Licensed Accessory.

EDGE Standard Features

Mechanical

4-wheel disc Anti-Lock Brake System (ABS)
 17" spare wheel and tire
 Easy Fuel[®] capless fuel filler
 Front-wheel drive (FWD)
 Hill start assist
 Independent front and rear suspension
 Power rack-and-pinion steering

Seating

Front bucket seats with 4-way adjustable head restraints
 Rear 60/40 split fold-flat seat with manually reclining seat backs and folding center armrest

Interior

Accessory delay for power features
 Adjustable driver and front-passenger sun visors
 Air conditioning with rear-seat vents
 Cargo area tie-downs and hooks
 Center console with deep bin, armrest, dividers, powerpoint and 2 cupholders
 Coat hooks (2)
 Cupholders/beverage holders (8)
 Four 12-volt powerpoints (2 in 1st row, 1 in 2nd row and 1 in rear cargo area)
 Front and rear carpeted floor mats
 Front and rear dome/map lights
 Front-passenger (1) and B-pillar (2) assist handles
 Instrumentation (tachometer, lamp outage, low fuel warning, low washer fluid, low oil pressure, door ajar, liftgate ajar and coolant temperature indicator)
 Map pockets in driver and front-passenger seat backs and in all 4 door panels, with beverage holders in front and rear door panels
 Overhead console with sunglasses holder
 Power door locks
 Power windows with one-touch-up/-down driver's side window feature
 Rear-seat fold-down armrest with 2 cupholders
 Rear-window defroster
 Steering wheel-mounted cruise, audio and 5-way MyFord[®] controls (2)
 Tilt and telescoping steering column

Exterior

Bi-functional projector-beam halogen headlamps
 Body-color rear spoiler
 Power sideview mirrors with integrated blind spot mirrors and manual fold-away design
 Privacy glass (rear doors, rear quarter windows and liftgate window)
 Remote Keyless Entry System with 2 integrated keyhead transmitter remotes
 Rocker moldings
 Roof-mounted antenna
 Windshield wipers – Front: variable-intermittent with washer; rear: 2-speed with washer

Safety & Security

Personal Safety System[™] for driver and front passenger includes dual-stage front airbags¹, safety belt pretensioners, safety belt energy-management retractors, safety belt usage sensors, driver's seat position sensor, crash severity sensor, restraint control module and Front-Passenger Sensing System
 AdvanceTrac[®] with RSC[®] (Roll Stability Control[™])
 Autolock
 Battery saver with headlamps-off delay
 Belt-Minder[®] front safety belt reminder
 Child-safety rear door locks
 Front-seat side airbags¹
 Front height-adjustable shoulder safety belts
 Illuminated Entry System
 LATCH – Lower Anchors and Tether Anchors for Children (2 in rear outboard seating positions)
 MyKey[®]
 Safety Canopy[®] System with side-curtain airbags¹ and rollover sensor
 SecuriLock[®] Passive Anti-Theft System
 SOS Post-Crash Alert System[™]
 Tire Pressure Monitoring System (excludes spare)



SE

Equipment Group 100A
 Includes all standard features, plus:

Mechanical

3.5L Ti-VCT V6 engine
 6-speed SelectShift Automatic[®] transmission with Sport Mode

Seating

Cloth seats
 Front bucket seats with driver's manual lumbar

Interior

AM/FM stereo/single-CD player with MP3 capability and 6 speakers
 Dark Slate Metallic center stack finish
 MyFord with 4.2" color LCD displays in instrument cluster and center stack, and media hub with auxiliary audio input jack
 Textured Black instrument panel appliqué

Exterior

17" painted aluminum wheels
 Black door handles, sideview mirrors and rocker moldings
 Bright, round exhaust tips
 Chrome grille



Horsepower, Torque & EPA-Estimated Fuel Economy

2.0L EcoBoost [®] I-4 Engine 6-speed automatic FWD	Horsepower: 240 @ 5,500 rpm ² 21 city/30 hwy/24 combined mpg	Torque (lb.-ft.): 270 @ 3,000 rpm ²
3.5L Ti-VCT V6 Engine 6-speed SelectShift Automatic FWD AWD	Horsepower: 285 @ 6,500 rpm 19 city/27 hwy/22 combined mpg 18 city/25 hwy/21 combined mpg	Torque: 253 @ 4,000 rpm
3.7L Ti-VCT V6 Engine 6-speed SelectShift Automatic FWD AWD	Horsepower: 305 @ 6,500 rpm 19 city/26 hwy/22 combined mpg 17 city/23 hwy/19 combined mpg	Torque: 280 @ 4,000 rpm

¹Always wear your safety belt and secure children in the rear seat. ²Figures achieved using premium unleaded gasoline.

Comparisons based on 2012 competitive models (class is Midsize Utilities), publicly available information and Ford certification data at time of release. Some features discussed may be optional. Vehicles shown may contain optional equipment. Features shown may be offered only in combination with other options or subject to additional ordering requirements or limitations. Dimensions shown may vary due to optional features and/or production variability. Following release of the PDF, certain changes in standard equipment, options and the like, or product delays may have occurred which would not be included in these pages. Your Ford Dealer is the best source for up-to-date information. Ford Division reserves the right to change product specifications at any time without incurring obligations.



EDGE Standard Features



SEL

Equipment Group 200A
Includes select SE features, plus:

Seating

10-way power driver's seat

EasyFold® rear seat back release

Unique cloth seats

Interior

Auto-dimming rearview mirror

Below-floor Cargo Management System

Cargo net

Compass

Dual-zone electronic automatic temperature control with particulate air filter

Ford SYNC® voice-activated, in-vehicle connectivity system (includes USB port in media hub)

Illuminated visor vanity mirrors

Leather-wrapped steering wheel and shift knob

Pewter-appearance instrument panel appliqué

SiriusXM Satellite Radio with 6-month trial subscription

Exterior

18" painted aluminum wheels

Automatic headlamps with wiper activation

Body-color door handles

Body-color, heated sideview mirrors with security approach lamps

Body-color SecuriCode™ keyless entry keypad

Reverse Sensing System

Supplemental park lamps



Limited

Equipment Group 300A
Includes select SEL features, plus:

Seating

Heated front bucket seats with 10-way power driver's seat with memory feature and 10-way power front-passenger seat

Leather-trimmed seating surfaces

Interior

Ambient lighting

Brushed-aluminum finish on front door-sill scuff plates

Ford SYNC voice-activated, in-vehicle connectivity system with SYNC Services for Traffic, Directions and Information

High-gloss Black center stack finish

MyFord Touch® with 2 configurable LCD displays in instrument cluster; 8" LCD touch screen in center stack; and media hub with 2 USB ports, SD card reader and audio/video input jacks

Audio System from Sony® with 12 speakers and HD Radio™ Technology

Unique wood appearance instrument panel appliqué

Universal garage door opener

Exterior

18" chrome-clad aluminum wheels

Body-color, heated sideview mirrors with security approach lamps and memory

Bright beltline moldings

Rear view camera



Sport

Equipment Group 400A
Includes select SEL features, plus:

Mechanical

3.7L Ti-VCT V6 engine

6-speed SelectShift Automatic® transmission with Sport Mode and paddle activation

Sport-tuned suspension

Seating

Charcoal Black leather-trimmed seating surfaces with Silver Smoke Metallic inserts and contrast stitching

Heated front bucket seats with 10-way power driver's seat with memory feature and 6-way power, fold-flat front-passenger seat

Interior

Aluminum brake and accelerator pedal covers

Ambient lighting

Brushed-aluminum finish on front door-sill scuff plates

Ford SYNC voice-activated, in-vehicle connectivity system with SYNC Services for Traffic, Directions and Information

High-gloss Black center stack finish

Liquid Silver Smoke appearance instrument panel appliqué

MyFord Touch with 2 configurable LCD displays in instrument cluster; 8" LCD touch screen in center stack; and media hub with 2 USB ports, SD card reader and audio/video input jacks

Audio System from Sony with 12 speakers and HD Radio Technology

Universal garage door opener

Exterior

22" polished aluminum wheels with Tuxedo Black spoke accents

Body-color door cladding and side-skirt rocker moldings

Body-color, heated sideview mirrors with security approach lamps and memory

Chrome, dual oval exhaust tips

Painted Tuxedo Black grille

Rear view camera

Unique body-color front and rear lower fascias

Unique headlamp and taillamp treatment

Exterior Dimensions

Wheelbase	111.2"
Length	184.2"
Height	67.0"
Width – Excluding mirrors	76.0"
Width – Including mirrors	87.5"
Liftover height	30.8"

Interior Dimensions

	Front/Rear
Head room	40.0"/39.3"
Shoulder room	58.9"/58.7"
Leg room	40.7"/39.6"

Capacities (cu. ft.)

Passenger volume	108.4
Cargo volume behind front seats	68.9
Cargo volume behind rear seats	32.2
Fuel tank (gal.)	
FWD	18.0
AWD	19.0

Dimensions may vary by trim level. iPod and iTunes are registered trademarks of Apple Inc. All rights reserved. The Bluetooth word mark is a trademark of the Bluetooth SIG, Inc. iHeartRadio is a registered trademark of Clear Channel Broadcasting, Inc. PANDORA, the PANDORA logo, and the Pandora trade dress are trademarks or registered trademarks of Pandora Media, Inc. Used with permission. Microsoft is a registered trademark of Microsoft Corporation. HD Radio is a proprietary trademark of iBiquity Digital Corp. Sony is a registered trademark of the Sony Corporation. SiriusXM Satellite Radio, Traffic and Travel Link subscriptions sold separately or as a package after trial expires. SiriusXM Traffic and Travel Link service available in select markets. See SiriusXM Customer Agreement for complete terms at www.siriusxm.com. Sirius satellite service is available in the 48 contiguous USA, DC, and PR. Sirius, XM and all related marks and logos are trademarks of Sirius XM Radio Inc. The term Wi-Fi® is a registered trademark of the Wi-Fi Alliance®. THULE is a registered trademark of Thule Sweden AB. INVISION is a trademark of Audiovox Corporation. Alcantara is a registered trademark of Alcantara S.p.A., Italy.



SE+SEL

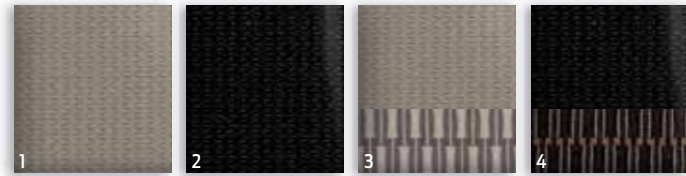


SEL. Charcoal Black leather trim. Available equipment. | 2.0L EcoBoost® I-4 engine! | MyFord® 4.2" color LCD display. | SEL Appearance Package. Charcoal Black leather with gray Alcantara® suede perforated inserts. | 12-volt powerpoint, one of 4.



¹Available feature.

SE+SEL



Exteriors

SE	Interiors	
B White Suede	1	
C Ingot Silver Metallic	1	2
H Deep Impact Blue Metallic	1	2
I Tuxedo Black Metallic	1	2

1 Medium Light Stone Cloth – Standard 2 Charcoal Black Cloth – Standard

SEL

A White Platinum Metallic Tri-coat ¹	3	4	5	6	7
B White Suede	3	5			
C Ingot Silver Metallic	3	4	5	6	7
D Mineral Gray Metallic	3	4	5	6	
E Ginger Ale Metallic	3	4	5	6	
F Ruby Red Metallic Tinted Clearcoat ¹	3	4	5	6	7
G Kodiak Brown Metallic	3	4	5	6	
H Deep Impact Blue Metallic	3	4	5	6	7
I Tuxedo Black Metallic	3	4	5	6	

3 Unique Medium Light Stone Cloth – Standard

4 Unique Charcoal Black Cloth – Standard

5 Medium Light Stone Leather – Optional

6 Charcoal Black Leather – Optional

7 Charcoal Black Leather with Gray Alcantara[®] Suede Perforated Inserts – Standard on SEL Appearance Package



20" Painted-Black Aluminum with Machined Face
Included with SEL Appearance Package



17" Painted Aluminum
Standard on SE V6 FWD²



18" Painted Aluminum
Standard on SEL,
included with SE EcoBoost and SE AWD



18" Chrome-Clad Aluminum
Available on SEL



20" Chrome-Clad Aluminum
Available on SEL



SEL. Tuxedo Black Metallic. Available equipment.

SE

Available Equipment Group

Equipment Group 101A – Ford SYNC[®] voice-activated, in-vehicle connectivity system includes USB port in media hub + SiriusXM Satellite Radio with 6-month trial subscription + **Convenience Package** includes auto-dimming rearview mirror, automatic headlamps, SecuriCode[™] keyless entry keypad, compass, Reverse Sensing System and below-floor Cargo Management System

Available Package

Cargo Accessories Package includes cargo security shade, cargo area protector and rear bumper protector

Available Options

2.0L EcoBoost[®] I-4 engine with 6-speed automatic transmission and active grille shutters (includes 18" painted aluminum wheels; n/a with AWD or SelectShift Automatic[®] transmission)

All-weather floor mats

All-wheel drive (AWD) (includes 18" painted aluminum wheels)

Roof side rails

SEL

Available Equipment Groups

Equipment Group 204A – Rear view camera + **Leather Comfort Package** includes leather-trimmed seating surfaces, heated front seats, and 6-way power, fold-flat front-passenger seat

Equipment Group 205A – Includes all content of 204A + SYNC with MyFord Touch[®] voice-activated, in-vehicle connectivity system, which includes SYNC Services; two 4.2" configurable LCD displays in instrument cluster; 8" LCD touch screen in center stack; media hub with 2 USB ports, SD card reader and audio/video input jacks; and Dark Copper center stack finish

Available Packages

Cargo Accessories Package

Class II Trailer Tow Package includes hitch receiver, larger radiator, upgraded cooling fans, wiring harness with 4-pin connector and trailer sway control (3,500 lbs. max.)

SEL Appearance Package includes unique leather-trimmed seats with gray Alcantara suede inserts, 20" painted-black aluminum wheels with machined faces, unique headlamp and taillamp treatment, body-color grille and floor mats with logo (requires 204A or 205A)

Vision Package includes BLIS[®] (Blind Spot Information System) with cross-traffic alert and LED turn signal mirror indicators (requires 205A)

Available Options

2.0L EcoBoost I-4 engine with 6-speed automatic transmission and active grille shutters (n/a with AWD, Trailer Tow Package or SelectShift Automatic transmission)

18" chrome-clad aluminum wheels (requires 204A or 205A)

20" chrome-clad aluminum wheels (requires 204A or 205A)

All-weather floor mats

All-wheel drive (AWD)

Dual head restraint DVD by INVISION^{™3}

Illuminated door sill plates

Panoramic Vista Roof[®] (requires 204A or 205A)

Power liftgate (requires 204A or 205A)

Roof-rack side rails (n/a with Vista Roof)

Voice-activated Navigation System with single-CD/MP3 player, SD card reader for map and POI storage, and integrated SiriusXM Traffic and Travel Link with 6-month trial subscription (requires 205A)

Available Ford Custom Accessories

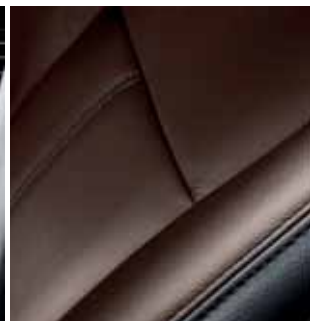
Visit accessories.ford.com to shop the complete collection

¹Additional charge. ²Limited availability. ³Ford Licensed Accessory. Colors are representative only. See your dealer for actual paint/trim options.

Limited

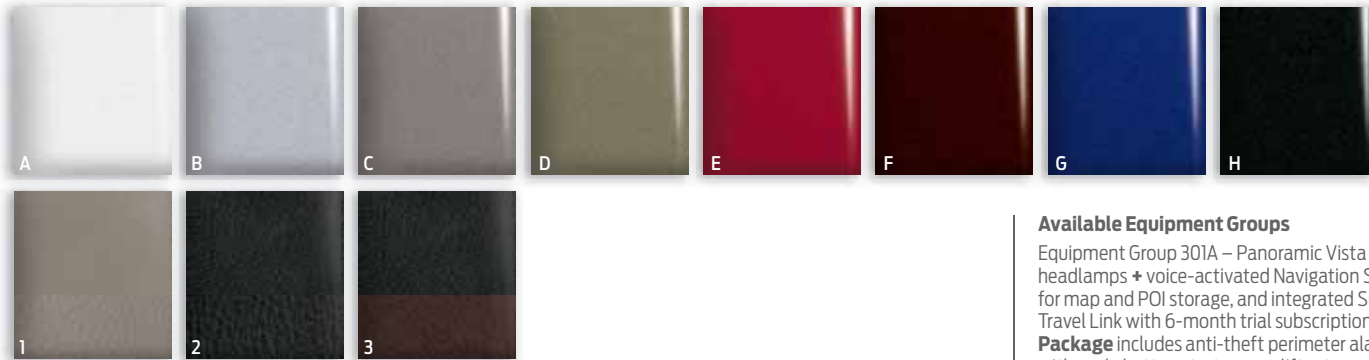


Charcoal Black leather trim. SYNC® with MyFord Touch®. Available equipment. | 2.0L EcoBoost® I-4 engine¹ exterior badging. | EasyFold® rear seat back release. | SiriusXM Travel Link¹ | Charcoal Black leather trim with Sienna seating surfaces.



¹Available feature.

Limited



Exteriors

A White Platinum Metallic Tri-coat ¹	1	2	3
B Ingot Silver Metallic	1	2	3
C Mineral Gray Metallic	1	2	3
D Ginger Ale Metallic	1	2	
E Ruby Red Metallic Tinted Clearcoat ¹	1	2	
F Kodiak Brown Metallic	1	2	3
G Deep Impact Blue Metallic	1	2	
H Tuxedo Black Metallic	1	2	3

- 1 Medium Light Stone Leather – Standard
 2 Charcoal Black Leather – Standard
 3 Charcoal Black Leather with Sienna Seating Surfaces – Standard

Interiors



18" Chrome-Clad Aluminum
Standard



20" Chrome-Clad Aluminum
Available

Available Equipment Groups

Equipment Group 301A – Panoramic Vista Roof[®] + HID headlamps + voice-activated Navigation System with SD card for map and POI storage, and integrated SiriusXM Traffic and Travel Link with 6-month trial subscription + **Driver Entry Package** includes anti-theft perimeter alarm, Intelligent Access with push-button start, power liftgate and Remote Start System
 Equipment Group 302A – Includes all content of Equipment Group 301A + adaptive cruise control and collision warning with brake support + **Vision Package** includes BLIS[®] (Blind Spot Information System) with cross-traffic alert, rain-sensing wipers and LED turn signal mirror indicators

Available Packages

Cargo Accessories Package includes cargo security shade, cargo area protector and rear bumper protector

Class II Trailer Tow Package includes hitch receiver, larger radiator, upgraded cooling fans, wiring harness with 4-pin connector and trailer sway control (3,500 lbs. max.)

Driver Entry Package

Vision Package

Available Options

2.0L EcoBoost[®] I-4 engine with 6-speed automatic transmission and active grille shutters (n/a with 302A, AWD, Trailer Tow Package or SelectShift Automatic[®] transmission)

20" chrome-clad aluminum wheels

All-weather floor mats

All-wheel drive (AWD)

Dual head restraint DVD by INVISION^{™2}

Illuminated door sill plates

Panoramic Vista Roof

Roof-rack side rails (n/a with Vista Roof)

Voice-activated Navigation System with SD card for map and POI storage, and integrated SiriusXM Traffic and Travel Link with 6-month trial subscription

Available Ford Custom Accessories

Visit accessories.ford.com to shop the complete collection



Deep Impact Blue Metallic. Available equipment.

¹Additional charge. ²Ford Licensed Accessory. Colors are representative only. See your dealer for actual paint/trim options.

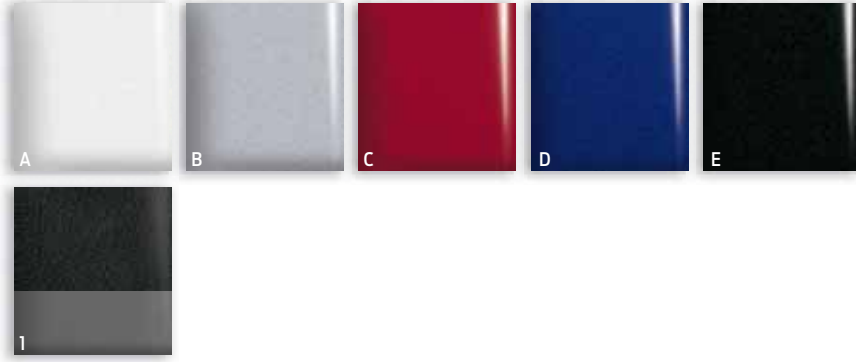
Sport



Charcoal Black leather trim. Available equipment. | Ambient lighting. | Chrome, oval exhaust tips. | Aluminum pedal covers. | 6-speed SelectShift Automatic® paddle shifters.



Sport



Exteriors

- A White Platinum Metallic Tri-coat¹
- B Ingot Silver Metallic
- C Ruby Red Metallic Tinted Clearcoat¹
- D Deep Impact Blue Metallic
- E Tuxedo Black Metallic

Interior

- 1
- 1
- 1
- 1
- 1

1 Charcoal Black Leather with Silver Smoke Metallic Seating Surfaces



22" Polished Aluminum
with Black Spoke Accents
Standard

Available Packages

Cargo Accessories Package includes cargo security shade, cargo area protector and rear bumper protector

Driver Entry Package includes anti-theft perimeter alarm, Intelligent Access with push-button start, power liftgate and Remote Start System

Vision Package includes BLIS[®] (Blind Spot Information System) with cross-traffic alert, rain-sensing wipers and LED turn signal mirror indicators

Available Options

All-weather floor mats

All-wheel drive (AWD)

Dual head restraint DVD by INVISION^{™2}

Illuminated door sill plates

Panoramic Vista Roof[®]

Voice-activated Navigation System with SD card for map and POI storage, and integrated SiriusXM Traffic and Travel Link with 6-month trial subscription

Available Ford Custom Accessories

Visit accessories.ford.com to shop the complete collection



Ruby Red Metallic Tinted Clearcoat. Available equipment.

¹Additional charge. ²Ford Licensed Accessory. Colors are representative only. See your dealer for actual paint/trim options.





QUALITY, GREEN, SAFE AND SMART.

ford.com

New Vehicle Limited Warranty. We want your Ford Edge ownership experience to be the best it can be. Under this warranty, your new vehicle comes with 3-year/36,000-mile bumper-to-bumper coverage, 5-year/60,000-mile Powertrain Warranty coverage, 5-year/50,000-mile safety restraint coverage, and 5-year/unlimited-mile corrosion (perforation) coverage – all with no deductible. Please ask your Ford Dealer for a copy of this limited warranty. **Roadside Assistance.** Covers your vehicle for 5 years or 60,000 miles, so you have the security of knowing that help may be only a phone call away should you run out of fuel, lock yourself out of the vehicle or need towing. Your Ford Dealer can provide complete details on all of these advantages. **Ford Credit.** Get the ride you want. Whether you plan to lease or finance, you'll find the choices that are right for you at Ford Credit. Ask your Ford Dealer for details or check us out at fordcredit.com. **Ford Extended Service Plan.** For a purchase or lease, the Ford Extended Service Plan (ESP) gives you "Peace-of-Mind" protection designed to cover key vehicle components and protect you from the cost of unexpected repairs. Ask your dealer for a Ford ESP, the only service contract backed exclusively by Ford and honored at all Ford Lincoln dealerships. **Insurance Services.** Get Ford Motor Company quality in your auto insurance. Our program offers industry-leading benefits and competitive rates. Call 1-877-367-3847, or visit us at fordvip.com for a no-obligation quote. Insurance offered by American Road Services Company (in CA, American Road Insurance Agency), a licensed agency and subsidiary of Ford Motor Company. **Genuine Ford Accessories** will be warranted for whichever provides you the greatest benefit: 12 months or 12,000 miles (whichever occurs first), or the remainder of your Bumper-to-Bumper 3-year/36,000-mile New Vehicle Limited Warranty. Ford Licensed Accessories (FLA) are warranted by the accessory manufacturer's warranty. FLA are fully designed and developed by the accessory manufacturer and have not been designed or tested to Ford Motor Company engineering requirements. Contact your Ford Dealer for details and/or a copy of all limited warranties.

Follow Ford:

