

2013 **FUSION | FUSION HYBRID**



Go Further



One look leaves you *wanting.*

How can we be so confident? Just take a peek. Its shape is surprisingly different. Arrestingly sleek. We analyzed every edge and line and performed hundreds of hours of wind-tunnel testing to improve aerodynamics – rendering the all-new 2013 Ford Fusion almost undetected by the air it slips through. The same can't be said for everyone else.

Eyes are irresistibly drawn to its swept-back silhouette, along its shapely curves, ending with its radiant LED taillamps and flush-mounted tailpipes.¹

And that's just the beginning.

More than you ever expected. Exactly what you need. From the company that goes further to bring it to you. See for yourself at your local Ford Dealer.

Titanium. White Platinum Metallic Tri-coat. Available equipment.

¹Available feature.

2013 **FUSION** | **FUSION HYBRID**
ford.com





More than a new car model. *A new model for cars.*

Shouldn't you be able to choose what powers your vehicle and best fits your lifestyle?
With the all-new 2013 Ford Fusion, you can.

Do you run on gasoline alone? Four different powertrain combinations show the breadth of choice in the Fusion gasoline engine lineup, which includes 2 advanced EcoBoost® engines. Prefer hybrid power? Our 3rd-generation hybrid system is our most advanced yet, strengthening the hybrid city mpg leadership that Fusion is known for.

One remarkable sedan. Two distinct choices.

Which one is right for you?

Fusion



Advanced gasoline engines, including 2 EcoBoost GTDIs that combine direct-injection with turbocharging, give Fusion quick acceleration *and* impressive fuel efficiency!

Fusion Hybrid



Our 3rd-generation hybrid system uses a gasoline engine, electric traction motor and lithium-ion battery pack to propel Fusion Hybrid to a class-leading 47 mpg city;² 4 mpg more than its nearest class competitor.

Titanium. Ingot Silver Metallic. Available equipment.

¹EPA-estimated 25 city/37 hwy/29 combined mpg, 1.6L EcoBoost I-4 with 6-speed manual. ²EPA-estimated 47 city/47 hwy/47 combined mpg, Hybrid. Actual mileage will vary. Class is Midsize Hybrid Sedans vs. 2012/2013 competitors.

2013 FUSION | FUSION HYBRID
ford.com





GASOLINE

UP TO 37 MPG HWY | EcoBoost



Increases efficiency with *advanced EcoBoost technology.*

And more. Our turbocharged, direct-injection EcoBoost® gasoline engines, featuring instantaneous low-end torque responsiveness and virtually no turbo lag, squeeze maximum power and efficiency from each drop of fuel. On Fusion, we've paired our 1.6L EcoBoost¹ with Auto Start-Stop.^{1,2} This new feature shuts off engine power when Fusion comes to a complete stop and seamlessly restarts it as you release the brake pedal, helping to reduce fuel consumption. Choose a 6-speed manual¹ or 6-speed SelectShift Automatic® transmission¹ and Active Grille Shutters¹ that adjust to improve aerodynamics. These advanced technologies help Fusion achieve 37 mpg hwy.³ A 175-hp 2.5L iVCT I-4 engine with 6-speed SelectShift Automatic is standard, rounding out an impressive gasoline engine lineup.

For performance-minded drivers. A 240-hp,⁴ 2.0L EcoBoost I-4 engine¹ is paired with a 6-speed SelectShift Automatic¹ that can be paddle shifted. Intelligent all-wheel drive¹ and 19" aluminum wheels¹ can also be added on Titanium models. As you accelerate through corners, Torque Vectoring Control (standard on all models) seamlessly enhances your hold on the road.

1.6L EcoBoost I-4 gasoline engine

6-speed manual transmission¹ 6-speed SelectShift Automatic¹
Horsepower: 178⁴ Torque (lb.-ft.): 184⁴ Horsepower: 178⁴ Torque (lb.-ft.): 184⁴
25 city/37 hwy/29 combined mpg 23 city/36 hwy/28 combined mpg

2.0L EcoBoost I-4 gasoline engine

6-speed SelectShift Automatic
Horsepower: 240⁴ Torque (lb.-ft.): 270⁴
22 city/33 hwy/26 combined mpg

2.5L iVCT I-4 gasoline engine

6-speed SelectShift Automatic
Horsepower: 175 Torque (lb.-ft.): 175
22 city/34 hwy/26 combined mpg

SE. Ruby Red Metallic Tinted Clearcoat. Available equipment.

¹Available feature. ²Late availability. ³EPA-estimated 25 city/37 hwy/29 combined mpg, 1.6L EcoBoost I-4 with 6-speed manual.
⁴Figures achieved using premium unleaded gasoline.

2013 FUSION | FUSION HYBRID
ford.com





HYBRID

47 MPG CITY/HWY



Strengthens its *hybrid mpg leadership.*

47 mpg in the city and on the highway? Yes, it's true. Building upon the award-winning success of the 2012 model, the all-new 2013 Fusion Hybrid achieves 47 combined mpg.¹ City mileage is best in class and 4 mpg more than its nearest class competitor. Our powersplit hybrid architecture helps maximize efficiency by seamlessly switching between the electric traction motor and its 2.0L Atkinson-cycle gasoline engine. Powered by state-of-the-art, lithium-ion batteries, the traction motor allows Fusion Hybrid to operate gas-free at speeds of up to 62 mph. When you're accelerating at speed or passing, the 2.0L engine kicks in as needed to power the battery and to enhance performance. Finally, the Regenerative Braking System captures over 90% of brake energy and uses it to help recharge the battery and maximize your mileage. Even when you're stopping, you're moving forward in Fusion Hybrid.

Fusion Hybrid 3rd-Generation Powertrain

New 2.0L iVCT Atkinson-cycle I-4 engine
New high-voltage, lithium-ion battery pack
88kW electric traction motor
Electronically controlled continuously variable transmission (eCVT)
Total system net horsepower: 188
47 city/47 hwy/47 combined mpg
Up to 62 mph in EV mode



These vibrant leaves and vines on the SmartGauge® with EcoGuide instrument cluster coach you to get the most from every ride. The higher your mpg, the more lush your vine – giving you instant feedback to help you improve your efficiency.

Hybrid SE. Ice Storm Metallic. Available equipment.

¹EPA-estimated 47 city/47 hwy/47 combined mpg, Hybrid. Class is Midsize Hybrid Sedans vs. 2012/2013 competitors.

2013 FUSION | FUSION HYBRID



ford.com

Go Further



Reshapes expectations, outside *and in.*

More than you expected. That's what we designed Fusion to deliver on every drive. Soft-touch surfaces greet your hands wherever they rest, including on the leather-wrapped steering wheel,¹ shift knob¹ and leather-trimmed seats! Brilliant LED lighting¹ treats your eyes. Real metal mesh grilles cover each of the 12 speakers of the Audio System from Sony.^{®1} Even the glove compartment will delight you. It's lighted, lined and lockable. Outside, slim sideview mirrors mount low on the doors – instead of the windows – designed to allow more light inside, minimize drag and help reduce wind noise. On Titanium, they're power, heated and auto-dimming,² with security approach lamps, integrated LED turn signal indicators, and a convenient memory feature for up to 3 drivers. The 2013 Fusion. Taking sedan convention – and sweeping it aside.

Titanium. Charcoal Black leather trim. Available equipment.

¹Available feature. ²Driver's side only.

2013 FUSION | FUSION HYBRID
ford.com





Keeps it quiet **to connect with your voice.**

So you can connect with friends, family, driving directions, and more, sound-absorption material minimizes extraneous noise. Active noise cancellation¹ uses the audio system to cancel road noise. In this hushed atmosphere, Ford SYNC^{®2} responds to your commands. Once paired, the system recognizes your phone and transfers your contacts to support voice calling. It also plays music from your phone, MP3, USB or iPod.[®] In fact, SYNC AppLink^{™3} lets smartphone users control Pandora,[®] iHeartRadio,[®] Stitcher Smart Radio[™] and other apps by voice too. Press the steering wheel controls and say things like “Call: Scott at work,” or “Play playlist: nightlife.” SYNC also offers 911 Assist,[®] and with a SYNC Services² account you get business searches, turn-by-turn driving directions, local movie times and more. Activate and personalize yours at ford.com/sync. SYNC. Say the word.

Titanium. Charcoal Black leather trim. Available equipment.

¹Fusion Hybrid only. ²Driving while distracted can result in loss of vehicle control. Only use mobile phones and other devices, even with voice commands, when it is safe to do so. SYNC Services varies by trim level and model year and may require a subscription. Traffic alerts and turn-by-turn directions available in select markets. Message and data rates may apply. Not all features are compatible with all phones. ³SYNC AppLink is available on select models and compatible with select smartphone platforms. Commands may vary by phone and AppLink software.



Transforms every day and every drive.

With simple graphics and fast touch-screen responses, voice-activated SYNC® with MyFord Touch®¹ easily controls your phone, entertainment, navigation² and climate settings. Featuring an 8" center touch screen,² 2 liquid crystal displays in the instrument panel,² 5-way controls on the steering wheel, and a media hub with dual USB ports,² this remarkable system recognizes thousands of voice commands, everything from "Travel Link: 5-day weather forecast" to "Destination: nearest museum." And it does it all while you keep both hands on the wheel and your eyes on the road.



Titanium. SYNC with MyFord Touch. Available equipment.

¹Available feature. Driving while distracted can result in loss of vehicle control. Only use SYNC/MyFord Touch/other devices, even with voice commands, when it is safe to do so. Some features may be locked out while the vehicle is in gear. Traffic alerts and turn-by-turn directions available in select markets. Message and data rates may apply. Not all features are compatible with all phones. ²Available feature. ³Requires in-vehicle USB mobile broadband connection, PAN-supported mobile device or proximity to an outside wireless hotspot.

See who's calling. MyFord Touch can download personal photos from your phone book and display them on its full-color screen when you receive a call, place a call or browse your directory.

Take the eco-friendly route. The Navigation System² includes a 6-month trial subscription to SiriusXM Satellite Radio (also available without navigation), Traffic and Travel Link to bring you over 130 channels, including commercial-free music, plus sports, news, talk and entertainment. Drive smarter with the ability to look up fuel prices, check local and national weather, get alerts on traffic-related incidents, receive alternate route suggestions and much more. Turn-by-turn directions are offered in your choice of Fastest, Shortest or Eco Route.

Keep all entertained. Access music files from a USB drive, an SD card, a portable hard drive or almost any device you can plug into one of the dual USB ports of the MyFord Touch media hub. With HD Radio™ Technology,² you can "Tag" songs for purchase later at the iTunes® Store. By plugging a smartphone or mobile broadband modem into one of the ports, you can even create a Wi-Fi® hotspot³ so passengers can browse the Internet while you drive in peace.

2013 FUSION | FUSION HYBRID
ford.com



Delights your senses.
And sensibilities.



| 8 airbags, including driver and front-passenger knee airbags

| Heated, leather-trimmed front seats with 3 memory settings¹

| Tilt and telescoping steering column

| Dual-zone electronic automatic temperature control²

From the comforting white of the overhead light to the 7 vibrant hues of ambient lighting,² LED illumination treats your eyes inside Fusion. Your ears will appreciate both the hushed quiet from acoustic underbody shields and sound-absorption material, as well as the rapturous output of the 12-speaker Audio System from Sony^{®2} with HD Radio[™] Technology and iTunes[®] tagging. Beyond that, your good sense will also be pleased. Fusion puts plastic bottles and other recycled materials usually destined for landfills to surprisingly practical reuse. Nearly 40 recycled 16-oz. plastic bottles go into the EcoCloth seats on select models, while recycled material is used for the injection-molded splash shields and other underbody components. Whether you look, touch or listen, the feeling is the same. Well done.

SE. Dune leather trim. Luxury Package. Available equipment.

¹Available feature. Memory settings on driver's side. ²Available feature.

2013 FUSION | FUSION HYBRID
ford.com



Helps keep you in line. Even if you start to drift. ((●))

If it detects Fusion drifting toward a lane marker, the Lane-Keeping System¹ is designed to alert you by applying torque to the steering wheel, directing you to correct your path. If you continue to drift, Fusion shudders the steering wheel, alerting you to steer back toward center. Drowsy drivers should promptly heed the warning of the Driver Alert System, which displays a coffee cup icon in your gauge cluster if it detects that you need to take a break from driving.



((●)) Detects traffic in your blind spots.

While you're driving, BLIS[®] (Blind Spot Information System) with cross-traffic alert¹² is designed to alert you with an amber light in your sideview mirror whenever it detects traffic in your blind spots. And when you're slowly backing out of a parking spot or driveway, it alerts you to vehicles approaching from either side with a sound, a message center warning and the amber light.

((●)) Maintains your gap. Automatically.

By maintaining your preset gap from the vehicle in front of you, adaptive cruise control and forward collision warning with brake support¹ helps reduce concerns about traffic. And, if it detects a potential collision, the system flashes a warning across your windshield, sounds an alarm, pre-charges the brakes and increases brake-assist sensitivity to provide full responsiveness when you do brake.

Makes waves. All over.

In addition to causing a stir in traffic, the all-new Fusion utilizes radar waves¹ to provide visual and audible feedback that can help you make the most of every drive. In addition, a sophisticated camera¹ helps improve your rear view when backing up. Wipers that sense moisture¹ activate at the first hint of rain to help keep your windshield clear. Heated sideview mirrors¹ do the same by melting snow and ice buildup. From the narrow confines of city driving to the wide-open stretches of highway, you can be confident that Fusion is your ally on the road.

Titanium. White Platinum Metallic Tri-coat. Available equipment.

¹Available feature. ²BLIS replaces standard integrated blind spot mirrors.

2013 FUSION | FUSION HYBRID
ford.com



Fulfills your desire for *individuality*.



There are many ways to make the 2013 Ford Fusion your own. A rear view camera allows you to see objects behind Fusion as you slowly back up. An invisible keyless entry keypad on the driver's door lights up as it senses your touch. Just enter your code and you're in. Then, start Fusion without ever taking your keys out of your pocket with push-button start. For parents of young drivers, standard MyKey® lets you limit top speed, and block calls and text messaging while they're driving. And active park assist helps determine a suitable parallel parking spot and virtually parks Fusion itself.

Rear view camera¹
SecuriCode™ invisible keypad¹
Intelligent Access with push-button start¹
MyKey
Active park assist¹

¹Available feature.



SE in Ruby Red Metallic Tinted Clearcoat customized with 18" Sparkle Nickel-painted aluminum wheels, molded splash guards, smoked side window deflectors and rear decklid spoiler

Illuminated door sill plates

Rear decklid spoiler

Remote start systems

All-weather floor mats

Exterior

Rear bumper protector

Racks and carriers¹

Flat splash guards

Wheel lock kit

Interior

Carpeted floor mats

Auto-dimming rearview mirror

Stainless steel door sill plates

Ash cup/coin holder

Cargo organizers and protectors

Electronics

Rear-Seat Entertainment System¹

¹Ford Licensed Accessory.

FUSION Standard Features



Mechanical

4-wheel disc Anti-Lock Brake System (ABS)
Electric parking brake
Electric power-assisted steering
Front and rear stabilizer bars
Front-wheel drive (FWD)
Hill start assist
Suspension – Front: independent MacPherson strut; rear: independent multilink
Torque Vectoring Control

Interior

12-volt powerpoints (3)
Auxiliary audio input jack
Cabin air filtration system
Dome light with map lights
Driver and front-passenger sun visors with illuminated vanity mirrors
Full center console with armrest and storage
Illuminated, lockable glove compartment
Message center with trip computer
Power door locks
Power windows with global open/close and one-touch-up/-down feature
Steering wheel-mounted cruise, audio and 5-way MyFord® controls
Tilt/telescoping steering column

Exterior

Chrome grille
Easy Fuel® capless fuel filler
Halogen projector headlamps
LED taillamps
Power sideview mirrors with integrated blind spot mirrors
Rear-window defroster
Solar-tinted glass
Speed-sensitive windshield wipers

Safety & Security

Personal Safety System™ for driver and front passenger includes dual-stage front airbags ¹ , safety belt pretensioners, safety belt energy-management retractors, safety belt usage sensors, driver's seat position sensor, crash severity sensor, restraint control module and Front-Passenger Sensing System
Driver and front-passenger knee airbags ¹
Front-seat side airbags ¹
2-row side-curtain airbags ¹
3-point safety belts for all seating positions
AdvanceTrac® electronic stability control with brake-actuated traction control
Anti-theft perimeter alarm
Belt-Minder® front safety belt reminder
Child-safety rear door locks
Emergency in-trunk release handle
Illuminated Entry System
LATCH – Lower Anchors and Tether Anchors for Children
MyKey®
SecuriLock® Passive Anti-Theft System
SOS Post-Crash Alert System™
Tire Pressure Monitoring System (excludes spare)

IS

Equipment Group 100A
Includes all standard features, plus:

Mechanical

2.5L iVCT I-4 engine and 6-speed SelectShift Automatic® transmission with shifter button activation
Compact spare

Seating

4-way manual driver's seat
2-way manual front-passenger seat
4-way adjustable front head restraints
60/40 split fold-flat spring-assisted rear seat
Cloth seating

Interior

AM/FM stereo/single-CD player with MP3 capability and 4 speakers
Cruise control
Day/night rearview mirror
Ford SYNC® voice-activated, in-vehicle connectivity system
Front carpeted floor mats
MyFord with 4.2" LCD display in instrument cluster and center stack
Single-zone manual air conditioning

Exterior

16" steel wheels with Sparkle Silver-painted covers and 215/60H16 all-season tires
Automatic headlamps
Black rocker moldings
Body-color door handles
Body-color, power sideview mirrors
Single exhaust with bright tip

Exterior Dimensions	Fusion/Hybrid
Wheelbase	112.2"
Length	191.8"
Height	58.2"/58.0"
Width – Excluding mirrors	72.9"
Width – Including mirrors	83.5"

Interior Dimensions	Front/Rear
Head room	39.2"/37.8"
Shoulder room	57.8"/56.9"
Hip room	55.0"/54.4"
Leg room	44.3"/38.3"

Capacities (cu. ft.)	Fusion/Hybrid
Passenger volume	102.8
Luggage capacity	16.0/12.0
Total interior volume	118.8/114.8
Fuel Tank (gal.)	
FWD	16.5
AWD	17.5
Hybrid	13.5

¹Always wear your safety belt and secure children in the rear seat.

Comparisons based on 2012/2013 competitive models (Fusion class is Midsize Sedans; Fusion Hybrid class is Midsize Hybrid Sedans), publicly available information and Ford certification data at time of release. Some features discussed may be optional. Vehicles shown may contain optional equipment. Features shown may be offered only in combination with other options or subject to additional ordering requirements or limitations. Dimensions shown may vary due to optional features and/or production variability. Following release of the PDF, certain changes in standard equipment, options and the like, or product delays may have occurred which would not be included in these pages. Your Ford Dealer is the best source for up-to-date information. Ford Division reserves the right to change product specifications at any time without incurring obligations.

FUSION Standard Features



SE

Equipment Group 203A
Includes select S features, plus:

Seating

10-way power driver's seat with power lumbar
Rear-seat fold-down center armrest with 2 cupholders

Interior

AM/FM stereo/single-CD player with MP3 capability and 6 speakers
Compass
Outside temperature display
Rear air conditioning ducts
SiriusXM Satellite Radio with 6-month trial subscription

Exterior

17" Sparkle Silver-painted aluminum wheels with 235/50R17 all-season tires
Body-color, power, heated sideview mirrors with security approach lamps and integrated turn signal indicators
Body-color rocker moldings
SecuriCode™ invisible keypad

Horsepower, Torque & EPA-Estimated Fuel Economy

2.5L iVCT I-4 Engine 6-speed SelectShift Automatic	Horsepower: 175 @ 6,000 rpm 22 city/34 hwy/26 combined mpg	Torque (lb.-ft.): 175 @ 4,500 rpm
1.6L EcoBoost I-4 Engine 6-speed manual 6-speed SelectShift Automatic 6-speed SelectShift Automatic and Auto Start-Stop ³	Horsepower: 178 @ 5,700 rpm ² 25 city/37 hwy/29 combined mpg 23 city/36 hwy/28 combined mpg See your dealer for latest information	Torque: 184 @ 2,500 rpm ²
2.0L EcoBoost I-4 Engine 6-speed SelectShift Automatic FWD AWD	Horsepower: 240 @ 5,550 rpm ² 22 city/33 hwy/26 combined mpg 22 city/31 hwy/25 combined mpg	Torque: 270 @ 3,000 rpm ²
2.0L iVCT Atkinson-Cycle I-4 HEV Engine with Permanent-Magnet AC-Synchronous Electric Motor Electronically controlled continuously variable transmission (eCVT)	Total system net horsepower: 188 47 city/47 hwy/47 combined mpg	



Titanium

Equipment Group 400A
Includes select SE features, plus:

Mechanical

2.0L EcoBoost® I-4 engine and 6-speed SelectShift Automatic® transmission with paddle shifters

Seating

2-way power front-passenger seat with power recline
Leather-trimmed Sport seats with heated front seats and driver's side memory with 3 settings

Interior

Aluminum brake and accelerator pedal covers
Aluminum front-door sill plates
Ambient lighting
Auto-dimming rearview mirror
Audio System from Sony® with AM/FM stereo/single-CD player with MP3 capability and 12 speakers in 10 locations and HD Radio™ Technology
Dual-zone electronic automatic temperature control
Ford SYNC® voice-activated, in-vehicle connectivity system with SYNC Services for Traffic, Directions and Information
Intelligent Access with push-button start (2 key fob transmitters)
Leather-wrapped steering wheel and shift knob
MyFord Touch® with 2 configurable 4.2" color LCD displays in instrument cluster; 8" LCD touch screen in center stack; and media hub with 2 USB ports, SD card reader and audio/video input jacks
Rear carpeted floor mats
Remote Start System

Exterior

18" polished face wheels with Flash Gray-painted pockets and 235/45R18 all-season tires
Body-color door handles with chrome insert
Body-color, power, heated sideview mirrors with memory, security approach lamps, auto-dimming driver's side, and integrated LED turn signal indicators
Dual integrated bright exhaust tips
Fog lamps
Rear decklid spoiler
Rear view camera
Reverse Sensing System



Hybrid SE

Equipment Group 503A
Includes select SE features, plus:

Mechanical

2.0L iVCT Atkinson-cycle I-4 HEV engine with permanent-magnet AC-synchronous electric motor
Electronically controlled continuously variable transmission (eCVT)
Lithium-Ion Battery Pack System
Regenerative Braking System
Tire mobility kit

Seating

2-way manual front-passenger seat
Unique EcoCloth seats with REPREVE® fabric

Interior

Active noise cancellation
Dual-zone electronic automatic temperature control
MyFord® with 4.2" LCD display in instrument cluster and center stack
Rear carpeted floor mats
SmartGauge® with EcoGuide

Exterior

17" 15-spoke Sparkle Silver-painted aluminum wheels with P225/50R17 all-season tires

Hybrid Titanium¹

Equipment Group 900A
Includes select Hybrid SE features, plus:

18" polished face wheels with Flash Gray-painted pockets and 235/45R18 all-season tires
110-volt power outlet
Aluminum brake and accelerator pedal covers
Aluminum front-door sill plates
Ambient lighting
Auto-dimming rearview mirror
Audio System from Sony® with 12 speakers and HD Radio Technology
Body-color, power, heated sideview mirrors with memory, security approach lamps, auto-dimming driver's side, and integrated LED turn signal indicators
Dual integrated bright exhaust tips
Fog lamps
Ford SYNC with SYNC Services for Traffic, Directions and Information
Intelligent Access with push-button start (2 key fob transmitters)
Leather-trimmed Sport seats with heated front seats and driver's side memory with 3 settings
Leather-wrapped steering wheel and shift knob
MyFord Touch with 8" LCD touch screen and media hub with 2 USB ports
Rear decklid spoiler
Rear view camera
Remote Start System
Reverse Sensing System

¹Available early 2013. ²Figures achieved using premium unleaded gasoline. ³Late availability.

Dimensions may vary by trim level. Sony is a registered trademark of the Sony Corporation. Microsoft is a registered trademark of Microsoft Corporation. iPod and iTunes are registered trademarks of Apple Inc. All rights reserved. PANDORA, the PANDORA logo, and the Pandora trade dress are trademarks or registered trademarks of Pandora Media, Inc. Used with permission. iHeartRadio is a registered trademark of Clear Channel Broadcasting, Inc. Stitcher Smart Radio is a registered trademark of Stitcher, Inc. SiriusXM Satellite Radio, Traffic and Travel Link subscriptions sold separately or as a package after trial expires. SiriusXM Traffic and Travel Link service available in select markets. See Sirius XM Customer Agreement for complete terms at www.siriusxm.com. Sirius satellite service is available in the 48 contiguous United States, DC, and PR. Sirius, XM and all related marks and logos are trademarks of Sirius XM Radio Inc. HD Radio is a proprietary trademark of iBiquity Digital Corp. Wi-Fi is a registered trademark of the Wi-Fi Alliance.® REPREVE is a registered trademark of Unifi, Inc.



SE. Charcoal Black cloth trim with red stitching. Appearance Package. Available equipment. | MyFord® 4.2" center stack display. | 60/40 split fold-flat rear seat. | Rear-seat center armrest with 2 cupholders!¹ | Easy Fuel® capless fuel filler.



¹Available feature.



Exteriors

S		
B	Oxford White	1
C	Ingot Silver Metallic	1
D	Sterling Gray Metallic	1
E	Ginger Ale Metallic	1
F	Ruby Red Metallic Tinted Clearcoat ¹	1
G	Bordeaux Reserve Red Metallic	1
H	Deep Impact Blue Metallic	1
I	Tuxedo Black Metallic	1

Interiors

SE	A	B	C	D	E	F	G	H	I
A	White Platinum Metallic Tri-coat ¹	2	3	4	5	6			
B	Oxford White	2	3	4	5	6			
C	Ingot Silver Metallic		3	4	5	6			
D	Sterling Gray Metallic		3		5	6			
E	Ginger Ale Metallic	2	3	4	5	6			
F	Ruby Red Metallic Tinted Clearcoat ¹	2	3	4	5	6			
G	Bordeaux Reserve Red Metallic	2	3	4	5	6			
H	Deep Impact Blue Metallic	2	3	4	5	6			
I	Tuxedo Black Metallic	2	3	4	5	6			

- 1 Earth Cloth – Standard on S
- 2 Dune Cloth – Standard on SE
- 3 Charcoal Black Cloth – Standard on SE
- 4 Dune Leather – Available with Luxury Package
- 5 Charcoal Black Leather – Available with Luxury Package
- 6 Charcoal Black Cloth with Red Stitching – Available with Appearance Package

S

Available Options

Remote Start System

Trunk cargo net

SE

Available Equipment Groups

Equipment Group 204A – **Appearance Package** includes 1.6L EcoBoost® I-4 engine with 6-speed SelectShift Automatic® transmission; 18" 5-spoke premium painted aluminum wheels with P235/45R18 all-season tires; rear decklid spoiler; fog lamps; leather-wrapped steering wheel; EcoCloth seats; and Charcoal Black interior with contrasting red stitching on center console and seats (n/a with 1.6L EcoBoost I-4 engine with 6-speed SelectShift Automatic transmission and Auto Start-Stop)

Equipment Group 205A – **Luxury Package** includes 1.6L EcoBoost I-4 engine with 6-speed SelectShift Automatic transmission; driver's seat memory feature; 2-way power front-passenger seat with power recline; heated front seats; leather-trimmed seats, steering wheel and shift knob; auto-dimming rearview mirror; rear carpeted floor mats; fog lamps; and power, heated sideview mirrors with memory, security approach lamps, auto-dimming driver's side, and integrated LED turn signal indicators and blind spot mirrors

Available Packages

SE Luxury Driver Assist Package includes BLIS® (Blind Spot Information System) with cross-traffic alert, Lane-Keeping System, auto high beams, rain-sensing windshield wipers, and 110-volt power outlet (requires 205A and SE MyFord Touch® Technology Package)

SE MyFord Touch Technology Package includes rear view camera; dual-zone electronic automatic temperature control; SYNC Services; and MyFord Touch with 2 configurable 4.2" color LCD displays in instrument cluster, 8" LCD touch screen in center stack, and media hub with 2 USB ports, SD card reader and audio/video input jacks

Available Options

1.6L EcoBoost I-4 engine with 6-speed SelectShift Automatic transmission

1.6L EcoBoost I-4 engine with 6-speed SelectShift Automatic transmission and Auto Start-Stop (n/a with 204A)

1.6L EcoBoost I-4 engine with 6-speed manual transmission

2.0L EcoBoost I-4 engine and 6-speed SelectShift Automatic transmission with paddle shifters (requires 204A or 205A and 18" wheels)

18" Gloss Black aluminum wheels² (requires 205A)

18" premium Luster Nickel-painted aluminum wheels (requires 205A)

Active park assist with Forward Sensing System (requires 205A, SE MyFord Touch Technology Package and Reverse Sensing System)

Adaptive cruise control and forward collision warning with brake support (requires 205A, 2.0L engine and SE MyFord Touch Technology Package)

All-weather floor mats

Power moonroof with universal garage door opener

Premium carpeted front and rear floor mats

Remote Start System

Reverse Sensing System

Trunk cargo net

Voice-activated Navigation System with integrated SiriusXM Traffic and Travel Link with 6-month trial subscription (requires SE MyFord Touch Technology Package)



16" Steel with Sparkle Silver-Painted Cover
Standard on S



17" Sparkle Silver-Painted Aluminum
Standard on SE



18" Gloss Black Aluminum²
Optional on SE



18" Premium Luster Nickel-Painted Aluminum
Optional on SE



18" 5-Spoke Premium Painted Aluminum
Included with Appearance Package



SE, Deep Impact Blue Metallic. Available equipment.

¹Additional charge. ²Coming Fall 2012. Colors are representative only. See your dealer for actual paint/trim options.

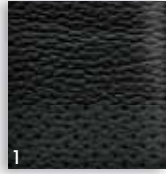
Titanium



Charcoal Black leather trim. Available equipment. | Aluminum brake and accelerator pedal covers. | Intelligent Access with push-button start. | Audio System from Sony® with HD Radio™ Technology and iTunes® tagging. | Steering wheel-mounted paddle shifters.



Titanium



Exteriors	Interior
A White Platinum Metallic Tri-coat ¹	1
B Oxford White	1
C Ingot Silver Metallic	1
D Sterling Gray Metallic	1
E Ginger Ale Metallic	1
F Ruby Red Metallic Tinted Clearcoat ¹	1
G Bordeaux Reserve Red Metallic	1
H Deep Impact Blue Metallic	1
I Tuxedo Black Metallic	1
1 Charcoal Black Leather – Standard	



18" Polished Face
with Flash Gray-Painted Pockets
Standard



19" Y-Spoke Sparkle Silver-Painted
Aluminum with Machined Face²
Optional



19" H-Spoke
Dark Stainless-Painted Aluminum
Optional



Available Package

Titanium Driver Assist Package includes BLIS® (Blind Spot Information System) with cross-traffic alert, Lane-Keeping System, auto high beams, rain-sensing windshield wipers, and 110-volt power outlet

Available Options

19" Y-spoke Sparkle Silver-painted aluminum wheels with machined face and 245/40R19 all-season tires²

19" H-spoke dark stainless-painted aluminum wheels and 245/40R19 all-season tires

Active park assist with Forward Sensing System

Adaptive cruise control and forward collision warning with brake support

All-weather floor mats

Intelligent all-wheel drive

Power moonroof with universal garage door opener

Premium carpeted front and rear floor mats

Spoiler delete

Trunk cargo net

Voice-activated Navigation System with integrated SiriusXM Traffic and Travel Link with 6-month trial subscription

White Platinum Metallic Tri-coat. Available equipment.

¹Additional charge. ²Late availability.
Colors are representative only. See your dealer for actual paint/trim options.

2013 FUSION | FUSION HYBRID

ford.com



Go Further

Hybrid SE+Hybrid Titanium¹

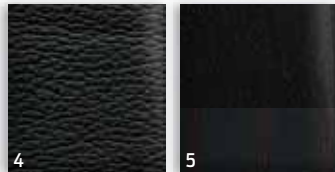
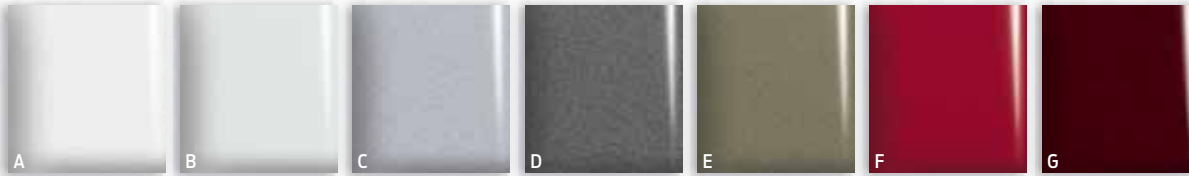


SmartGauge[®] with EcoGuide instrument cluster. Available equipment. | BLIS[®] (Blind Spot Information System) with cross-traffic alert?²
| Climate control screen on SYNC[®] with MyFord Touch[®] | 10-way power driver's seat with power lumbar and memory?² | 110-volt power outlet?²



¹Available early 2013. ²Available feature.

Hybrid SE+Hybrid Titanium¹



Exteriors

A White Platinum Metallic Tri-coat ²	1	2	3	4	5
B Oxford White	1	2	3	4	5
C Ingot Silver Metallic		2		4	5
D Sterling Gray Metallic		2		4	5
E Ginger Ale Metallic	1	2	3	4	5
F Ruby Red Metallic Tinted Clearcoat ²	1	2	3	4	5
G Bordeaux Reserve Red Metallic	1	2	3	4	5
H Ice Storm Metallic	1	2	3	4	5
I Deep Impact Blue Metallic	1	2	3	4	5
J Tuxedo Black Metallic	1	2	3	4	5

- 1 Dune Cloth – Standard on Hybrid SE
 2 Charcoal Black Cloth – Standard on Hybrid SE
 3 Dune Leather – Available with Luxury Package on Hybrid SE
 4 Charcoal Black Leather – Standard on Hybrid Titanium; available with Luxury Package on Hybrid SE
 5 Charcoal Black Cloth with Red Stitching – Available with Appearance Package on Hybrid SE



Hybrid SE. Ice Storm Metallic. Available equipment.

¹Available early 2013. ²Additional charge. Colors are representative only. See your dealer for actual paint/trim options.



17" 15-Spoke Sparkle Silver-Painted Aluminum Standard on Hybrid SE



18" Premium Luster Nickel-Painted Aluminum Optional with Luxury Package on Hybrid SE



18" 5-Spoke Premium Painted Aluminum Available with Appearance Package on Hybrid SE



18" Polished Face with Flash Gray-Painted Pockets Standard on Hybrid Titanium

Available Equipment Groups

Equipment Group 504A – **Appearance Package** includes 18" 5-spoke premium painted aluminum wheels with 235/45R18 all-season tires; rear decklid spoiler; fog lamps; leather-wrapped steering wheel; and Charcoal Black interior with contrasting red stitching on front armrest and seats (Hybrid SE only)

Equipment Group 505A – **Luxury Package** includes driver's seat with memory feature; 2-way power front-passenger seat with power recline; heated front seats; leather-trimmed seats, steering wheel and shift knob; auto-dimming rearview mirror; rear carpeted floor mats; fog lamps; and power, heated sideview mirrors with memory, security approach lamps, auto-dimming driver's side, and integrated LED turn signal indicators and blind spot mirrors (Hybrid SE only)

Available Packages

SE Luxury Driver Assist Package includes BLIS[®] (Blind Spot Information System) with cross-traffic alert, Lane-Keeping System, auto high beams, and rain-sensing windshield wipers (requires 505A and SE MyFord Touch[®] Technology Package)

SE MyFord Touch Technology Package includes rear view camera; 110-volt power outlet; SYNC Services; and MyFord Touch with 2 configurable 4.2" color LCD displays in instrument cluster, 8" LCD touch screen in center stack, and media hub with 2 USB ports, SD card reader and audio/video input jacks

Titanium Driver Assist Package includes BLIS (Blind Spot Information System) with cross-traffic alert, Lane-Keeping System, auto high beams, and rain-sensing windshield wipers

Available Options

18" premium Luster Nickel-painted aluminum wheels (Hybrid SE only; requires 505A)

Active park assist with Forward Sensing System (requires SE Luxury Driver Assist Package or SE MyFord Touch Technology Package, and 505A and Reverse Sensing System on Hybrid SE)

Adaptive cruise control and forward collision warning with brake support (n/a on 503A; requires SE MyFord Touch Technology Package on Hybrid SE)

All-weather floor mats

Power moonroof with universal garage door opener

Premium carpeted front and rear floor mats

Remote Start System (Hybrid SE only)

Reverse Sensing System (Hybrid SE only)

Spoiler delete (Hybrid Titanium only)

Trunk cargo net

Voice-activated Navigation System with integrated SiriusXM Traffic and Travel Link with 6-month trial subscription (requires SE MyFord Touch Technology Package on Hybrid SE)



QUALITY, GREEN, SAFE AND SMART.

ford.com

New Vehicle Limited Warranty. We want your Ford Fusion ownership experience to be the best it can be. Under this warranty, your new vehicle comes with 3-year/36,000-mile bumper-to-bumper coverage, 5-year/60,000-mile Powertrain Warranty coverage, 5-year/60,000-mile safety restraint coverage, and 5-year/unlimited-mile corrosion (perforation) coverage – all with no deductible. Fusion Hybrid unique electric components are covered during the Hybrid Unique Component Coverage, which lasts for 8 years or 100,000 miles, whichever occurs first. Please ask your Ford Dealer for copies of these limited warranties. □ **Roadside Assistance.** Covers your vehicle for 5 years or 60,000 miles, so you have the security of knowing that help may be only a phone call away should you run out of fuel, lock yourself out of the vehicle or need towing. Your Ford Dealer can provide complete details on all of these advantages. □ **Ford Credit.** Get the ride you want. Whether you plan to lease or finance, you'll find the choices that are right for you at Ford Credit. Ask your Ford Dealer for details or check us out at fordcredit.com. □ **Ford Extended Service Plan.** For a purchase or lease, the Ford Extended Service Plan (ESP) gives you "Peace-of-Mind" protection designed to cover key vehicle components and protect you from the cost of unexpected repairs. Ask your dealer for a Ford ESP, the only service contract backed exclusively by Ford and honored at all Ford Lincoln dealerships. □ **Insurance Services.** Get Ford Motor Company quality in your auto insurance. Our program offers industry-leading benefits and competitive rates. Call 1-877-367-3847, or visit us at fordvip.com for a no-obligation quote. Insurance offered by American Road Services Company (in CA, American Road Insurance Agency), a licensed agency and subsidiary of Ford Motor Company. □ **Genuine Ford Accessories** will be warranted for whichever provides you the greatest benefit: 12 months or 12,000 miles (whichever occurs first), or the remainder of your Bumper-to-Bumper 3-year/36,000-mile New Vehicle Limited Warranty. Ford Licensed Accessories (FLA) are warranted by the accessory manufacturer's warranty. FLA are fully designed and developed by the accessory manufacturer and have not been designed or tested to Ford Motor Company engineering requirements. Contact your Ford Dealer for details and/or a copy of all limited warranties.

Follow Ford:



facebook.com/fordfusion



twitter.com/fordfusion



youtube.com/fordfusion



gplus.to/FordMotorCompany

