



Innovation that excites

# 2014 ALTIMA® SEDAN

## NISSAN ALTIMA® SEDAN

Wouldn't it be cool if your car could put a smile on your face, confidence in your hands and goose bumps all over? Here are just a few ways Altima® gives you an unforgettable drive.

**5.1 L/100 km (55 MPG) highway.** Altima®'s class-leading fuel efficiency helps get you 1335 highway kilometres on a single tank! Bring snacks – you could get pretty hungry between stops.

**Blind Spot Warning System.** This available technology helps detect and alert you of other vehicles when you're changing lanes.<sup>2</sup>

**Advanced Drive-Assist™ Display.** Lets you scan info on your dashboard quickly, helping minimize time spent looking away from the road.<sup>3</sup>

Looking for more? Visit the Nissan Virtual Showroom for a video exploration of the Altima.<sup>4</sup> Visit Altima® on Facebook® or Twitter® to see what owners have to say. Find walkarounds, product demos and more on YouTube.<sup>5</sup>

And follow Nissan Canada on:



Innovation that excites

### visit [nissan.ca](http://nissan.ca)

<sup>1</sup>Fuel economy from competitive intermediate 2013 internal combustion engine models sourced from Autodata on 12-06-2013. Hybrids and diesels excluded. 2014 Altima® fuel economy tested by Nissan Motor Company Limited. 2014 Altima®: 2.5 L engine (7.5 L/100 km city/5.1 L/100 km hwy.). 1335 km estimate range calculated dividing fuel capacity (68.1 L) by highway fuel economy (5.1 L) and multiplying by 100 km. <sup>2</sup>The Blind Spot Warning System is not a substitute for proper lane change procedures. The system will not prevent contact with other vehicles or accidents. It may not detect every vehicle or object around you. <sup>3</sup>Driving is serious business and requires your full attention. Even with Advanced Drive-Assist™ Display, only use phone or other communication devices when safe. Facebook® is a registered trademark of Facebook, Inc. Twitter® is a registered trademark of Twitter, Inc. YouTube® is a registered trademark of Google Inc.

All illustrations, photographs and specifications in this brochure are based on the latest product information. See actual vehicle for complete accuracy. Nissan Canada Inc. reserves the right to make changes at any time, without notice, in prices, colours, materials, equipment, specifications and models, and to discontinue models or equipment. For information on additional options and accessories, contact your Nissan Dealership. Registered trademarks are property of their respective owners.

At [nissan.ca](http://nissan.ca), you'll find virtual product demonstrations, a way to "build your own Nissan," a dealer locator, and more information about key Nissan support services. The Nissan names, logos, product names, feature names, and slogans are trademarks owned by or licensed to Nissan Motor Co. Ltd. and/or its North American subsidiaries. **Always wear your seat belt, and please don't drink and drive.** Printed in July 2013. Catalogue number: 99999-ALT14EN. © 2013 Nissan Canada Inc. All rights reserved.



**WHAT IF\_**  
**YOUR DRIVE WAS THE**  
**BEST PART OF YOUR DAY?**

What if just taking an on-ramp gave you an adrenaline rush? Or if you could know you're free and clear before you change lanes. What if the design of your seat made long trips feel less so? And your customized radio station came along for the ride. What about getting a thumbs-up from the valet as you pulled away from the curb? Now it's all possible. The 2014 Nissan Altima®. Change the way you drive forever.



**Welcome to Altima®. It's been waiting for you.** That's because Altima®'s available Remote Engine Start System lets you warm up or cool down the cabin from up to 58 metres away!<sup>1</sup> Now when you open the car door, it's as if Altima® was expecting you. And with details like available Dual Zone Automatic Temperature Control, and heated front seats and steering wheel, Altima®'s interior makes you want to stay. Ready? Just press the Push Button Ignition, and you're on your way.

<sup>1</sup>Provincial laws may apply; review local laws before using.

Nissan Altima® Sedan 3.5 SL shown in Beige Leather.



## ZERO-GRAVITY SEATS FOR COMFORT THAT'S OUT OF THIS WORLD.

Whether you're on a cross-country road-trip or braving the daily commute, sitting in a car for too long can be fatiguing. To help you out, Nissan engineers looked to the cosmos where astronauts float weightlessly in zero-gravity conditions.

**Zero-gravity Seats** – In the weightlessness of space, humans tend to take a relaxed posture that minimizes stress on the body. To recreate this “neutral posture” when you're behind the wheel, Nissan designed an articulated front seat that offers continuous support from the pelvis to the chest, along with seat cushions that flex in response to your unique pressure points. The result is a seat that's amazingly comfortable and helps reduce fatigue, no spacesuit required.

# NISSAN ADVANCED DRIVE-ASSIST™ DISPLAY INNOVATION THAT'S RIGHT IN FRONT OF YOU.

Traffic jams. Soy chai lattes. Dinner plans. With so much going on around you, it's easy to lose sight of what's most important: driving. From turn-by-turn directions to caller ID,<sup>1</sup> the Advanced Drive-Assist™ Display serves up info right in front of you – helping to minimize time looking away.<sup>2</sup> Plus, its intuitive 3-D depth and tilt design helps you take it all in quicker. So you can focus on what really matters.



TURN-BY-TURN NAVIGATION<sup>1, 3</sup>



LANE DEPARTURE WARNING<sup>1, 4</sup>



TIRE PRESSURE MONITORING SYSTEM<sup>1, 5</sup>



CALLER ID



<sup>1</sup>Information displayed is dependent on how vehicle is equipped. <sup>2</sup>Driving is serious business and requires your full attention. Even with Advanced Drive-Assist™ Display, only use phone or other communication devices when safe. <sup>3</sup>Factory-installed option. Never program while driving. GPS mapping may not be detailed in all areas or reflect current road regulations. <sup>4</sup>Lane Departure Warning System operates only when the lane markings are clearly visible on the road. Speed limitations apply. See Owner's Manual for details. <sup>5</sup>Tire Pressure Monitoring System is not a substitute for regular tire pressure checks.

U.S. instrumentation shown.

NISSANCONNECT<sup>SM</sup>1

## INNOVATION YOU'LL FIND INCREDIBLY HANDY.

NissanConnect<sup>SM</sup> is smart technology that keeps your world within reach. And with NissanConnect<sup>SM</sup> Apps, your Altima<sup>®</sup> becomes your smartphone's best friend. Music, information and the apps that keep you connected to your world all work seamlessly together through Altima<sup>®</sup>'s audio system. And it keeps on getting better: the app alerts you with updates to the latest version, and the basic app package is free for the first three years.<sup>1</sup>

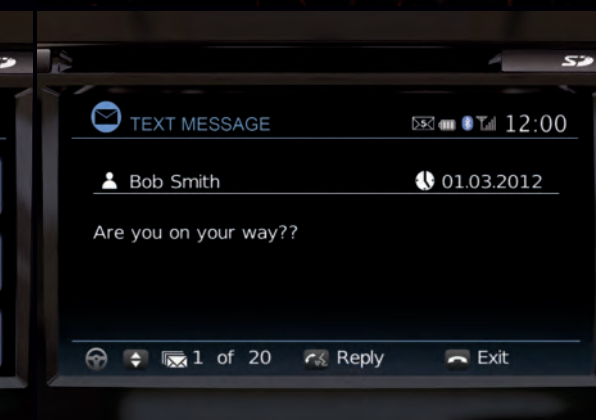
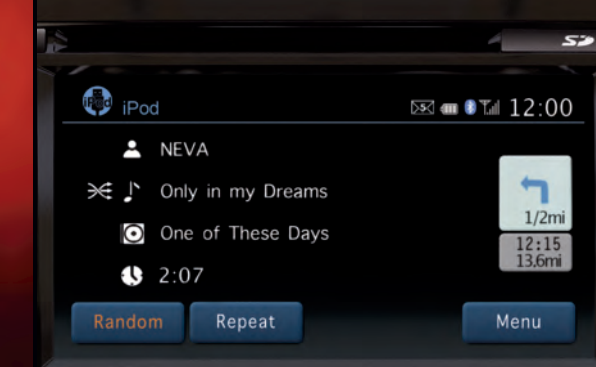
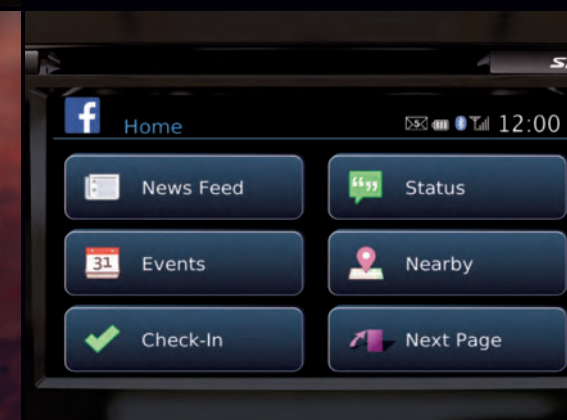
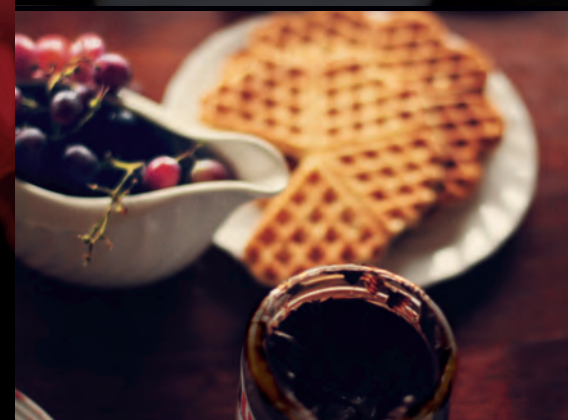
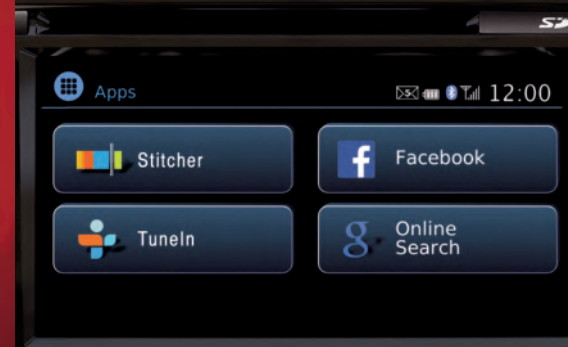
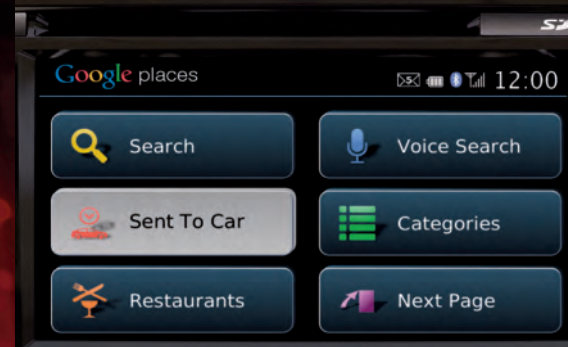
**NissanConnect<sup>SM</sup> Apps: for the music you love!** Imagine the choices you have with TuneIn<sup>™</sup> Radio, Stitcher,<sup>®</sup> Slacker<sup>®</sup> and more. And it couldn't be easier – download the app, and depending on your smartphone, you can stream the music wirelessly via Bluetooth<sup>®</sup> or use Altima<sup>®</sup>'s iPod<sup>®</sup>/USB input.<sup>2,3</sup> You can find out how to download the app and about smartphone compatibility at [www.Nissan.ca/NissanConnect](http://www.Nissan.ca/NissanConnect).

**NissanConnect<sup>SM</sup> Apps: everything that matters at your fingertips.**<sup>1</sup> You're wired to your world with the NissanConnect<sup>SM</sup> Apps. Altima<sup>®</sup> lets you safely keep track of Facebook<sup>®</sup> and more. And thanks to Altima<sup>®</sup>'s available navigation system and NissanConnect<sup>SM</sup>'s compatibility with location-based services including Online Search powered by Google<sup>®</sup> and Yelp<sup>®</sup>, getting around has never been easier.<sup>4</sup> (Go to the Owners section of [www.Nissan.ca/NissanConnect](http://www.Nissan.ca/NissanConnect) for details on downloading the app, smartphone compatibility and late availability of certain apps.)

More than just apps, NissanConnect<sup>SM</sup> keeps you in the loop with:

- Nissan Navigation System – with voice recognition featuring one-shot destination entry and SiriusXM Traffic<sup>4,5</sup>
- iPod<sup>®</sup>/USB input – search for a tune with enhanced voice recognition<sup>3</sup>
- Streaming audio via Bluetooth<sup>®2</sup>
- Hands-free text-messaging assistant<sup>6,7</sup>

<sup>1</sup>Late availability. Driving is serious business. Only use NissanConnect<sup>SM</sup> Apps services when safe to do so. Subscription Agreement required. Compatible smartphone required. Not all app features are available for all models – check [www.Nissan.ca/NissanConnect](http://www.Nissan.ca/NissanConnect) for details. Never program while driving. GPS mapping may not be detailed in all areas or reflect current road regulations. Cellular network not available in all areas. Cellular network, apps, and services, including Google Services, are provided by independent companies not within Nissan's control. Should provider terminate/restrict service, service may be terminated without notice or liability to Nissan and/or its agents. Nissan not responsible for any equipment or app replacement/upgrades, or associated costs, that may be required for continued operation. Terms and conditions of Subscription Agreement apply. 36-month trial period starts the later of vehicle sale date or app launch date; subsequently a paid subscription is required at the then current rate. See retailer for details. Standard text rates and/or data usage may apply. <sup>2</sup>Availability of specific features is dependent upon the phone's Bluetooth<sup>®</sup> support. Please refer to your phone Owner's Manual for details. The Bluetooth word mark and logos are owned by Bluetooth SIG, Inc., and any use of such marks by Nissan is under licence. <sup>3</sup>Driving is serious business and requires your full attention. Do not operate any devices connected to the USB or auxiliary audio input jack while driving. <sup>4</sup>Factory-installed option. Never program while driving. GPS mapping may not be detailed in all areas or reflect current road regulations. <sup>5</sup>XM and SiriusXM Satellite Radio is available in the 10 Canadian provinces and the 48 contiguous United States. Basic monthly subscription required and sold separately after trial period. SiriusXM Traffic<sup>®</sup> is available in select North American markets. In Canada, at time of printing, incident and flow data is available for 7 metropolitan areas of Canada (Vancouver, Calgary, Edmonton, Toronto, Ottawa, Montreal and Quebec City). Limited flow data is available for Toronto. Subscription sold separately after trial period. All subscriptions subject to customer agreement at [siriusxm.ca/terms](http://siriusxm.ca/terms). All fees and programming subject to change. © 2013 Sirius XM Canada Inc. The Sirius, XM, and SiriusXM names and all related marks and logos are trademarks of Sirius XM Radio Inc. All other trademarks are the property of their respective owners. <sup>6</sup>Driving is serious business and requires your full attention. Only use phone or other communication devices when safe. <sup>7</sup>Use the text messaging feature after stopping your vehicle in a safe location. If you have to use the feature while driving, exercise extreme caution at all times so full attention may be given to vehicle operation. Facebook<sup>®</sup> is a registered trademark of Facebook, Inc. Google<sup>®</sup> is a registered trademark of Google Inc. iPod<sup>®</sup> is a registered trademark of Apple, Inc. All rights reserved. iPod not included. Slacker<sup>®</sup> is a registered trademark of Slacker, Inc. Stitcher<sup>®</sup> is a registered trademark of Stitcher, Inc. TuneIn<sup>™</sup> is a trademark of TuneIn Inc. Yelp<sup>®</sup> is a registered trademark of Yelp Inc.



4-CYLINDER

5.1

L/100 KM (55 MPG) HWY<sup>2</sup>

### CLASS-LEADING FUEL ECONOMY.<sup>1</sup>

Extensive refinements to Altima<sup>®</sup>'s 4-cylinder engine and Continuously Variable Transmission help ensure it's as powerful and fuel-efficient as ever. With class-leading fuel economy<sup>1</sup> and outstanding acceleration, you'll enjoy amazingly smooth power delivery as you breeze past the pump.

**PUREDRIVE.<sup>™</sup>** The 2014 Altima<sup>®</sup> 2.5 wears the PUREDRIVE<sup>™</sup> badge, proof that you can have a roomy car that's fun to drive and still save fuel and help the environment. Best of all, Altima<sup>®</sup> is just one of a family of PUREDRIVE<sup>™</sup> vehicles, reflecting Nissan's commitment to developing more environmentally friendly transportation for all of us.



**4-cylinder Engine.** Choose the 182 HP 4-cylinder engine and get more than just spirited performance. The advanced intake system optimizes the opening of intake valves at high rpm to keep the torque curve flat, giving you smooth power while contributing to the class-leading fuel economy.<sup>1</sup>

**Xtronic CVT<sup>®</sup> (Continuously Variable Transmission).** Say goodbye to fixed gear ratios and hello to a new kind of CVT. In the newest version of our CVT, friction is reduced by up to 40% and the ratio coverage is increased to greater than that of some 8-speed automatics. What does that mean behind the wheel? Better acceleration and fuel economy, plus performance so smooth, it's like riding a continuous wave of power.

V6 ENGINE

270

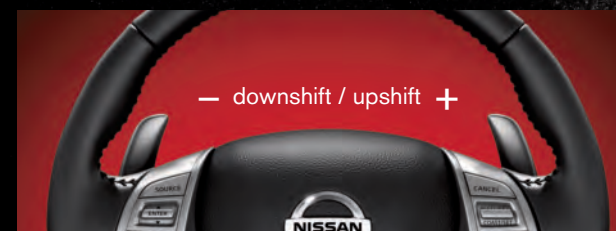
HORSEPOWER

### AMAZING ACCELERATION.

What if your daily drive got an adrenaline boost? Altima<sup>®</sup>'s V6 engine not only gives you incredible acceleration, but its Xtronic CVT<sup>®</sup> features three modes for a more customized driving experience, including paddle shifters for some Formula 1-style action.

**V6 Engine.** Nissan's legendary 3.5-litre, 270 HP V6 engine treats you to sports-car like performance and a cool 6.2 L/100 km (46 MPG) highway that keeps you right at home in the carpool lane.<sup>2</sup> Part of the engineering magic is Continuously Variable Valve Timing Control System (CVTCS), which means power is always on tap – off the line, or passing – for a ride as thrilling as it is efficient.

**Xtronic CVT<sup>®</sup> with Paddle Shifters.** Customize your ride with three modes. Pick Drive for every day, Ds for a sportier "shift" feel, or go hands-on with the paddle shifters. Unique to the V6, the available paddle shifters are mounted right on the steering column, putting precise shifting control at your fingertips. No clutch needed. Just pull a paddle and your "gear" changes on command, giving you an experience that's the best of both worlds.



Scan this code to watch a video on Altima<sup>®</sup> Sedan's better than ever Xtronic CVT<sup>®</sup> transmission. Or go to [bit.ly/XtronicCVT-EN](http://bit.ly/XtronicCVT-EN)

Nissan Altima<sup>®</sup> Sedan 2.5 SL shown in Java Metallic.

<sup>1</sup>Fuel economy from competitive intermediate/compact 2013 internal combustion engine models sourced from Autodata on 12-06-2013. Hybrids and diesels excluded. 2014 Altima<sup>™</sup> fuel economy tested by Nissan Motor Company Limited. 2014 Altima<sup>™</sup>: 2.5 L engine (7.5 L/100 km city/5.1 L/100 km hwy). Actual mileage may vary with driving conditions – use for comparison purposes only. <sup>2</sup>2014 Fuel Economy Estimate. Actual mileage may vary with driving conditions – use for comparison only.



## TAKING A CORNER WILL NEVER FEEL THE SAME.

What if your car knew when you were cornering – and how to react to your commands? That's the kind of intuitive response we've engineered into every Altima®. So you can enter a corner with more confidence, and exit with a big grin.



**Active Understeer Control.** This innovative technology helps improve control when you take a corner. It reads the cornering situation and, if needed, will imperceptibly brake the appropriate wheel to help you steer through the turn.



**Suspension.** Altima®'s rear multi-link suspension is designed for exceptional agility. You'll feel it especially in the corners, when the layout of the suspension allows the rear wheels to turn slightly to match the front – giving you the sensation of riding on rails.



**Shocks.** Altima®'s luxury sedan-inspired shocks significantly reduce vibrations for a smooth, flat ride. A rebound spring inside of each shock absorber makes for minimal roughness and more secure cornering, combining great performance with great ride comfort.

## NISSAN SAFETY SHIELD® TECHNOLOGIES

# INNOVATION TO HELP DOUBLE CHECK YOUR DOUBLE CHECK.

What if your car had your back? Whether you're changing lanes on the highway or deftly manoeuvring your way into a parking spot, Altima®'s available Safety Shield® technologies take advantage of the rearview camera and act as a second set of eyes, giving you a whole new way to double check.



**Blind Spot Warning.** If another vehicle is detected in your blind spot area, an indicator appears in the driver's or front passenger's doors and on the Advanced Drive-Assist™ Display. Put your turn signal on, and the indicator flashes with a warning chime to alert you.<sup>1</sup>



**Lane Departure Warning.** If Altima® detects that you're straying from your lane, the Lane Departure Warning System will give both a visual and audible alert. The system is so smart, it's designed to stop the warnings whenever your turn signal is engaged.<sup>2</sup>



**Moving Object Detection.** Shift into Reverse, and the available next-generation RearView Monitor displays what's behind you. If it detects something moving by the rear of the vehicle, it gives a visual and audible alert. And whenever you want a wider rear view, just push the camera button.<sup>3</sup>

<sup>1</sup>The Blind Spot Warning System is not a substitute for proper lane change procedures. The system will not prevent contact with other vehicles or accidents. It may not detect every vehicle or object around you. <sup>2</sup>Lane Departure Warning System operates only when the lane markings are clearly visible on the road. Speed limitations apply. See Owner's Manual for details. <sup>3</sup>Parking aid/convenience feature. Cannot completely eliminate blind spots or warn of moving objects. May not detect every object. Always check surroundings before moving vehicle. Not a substitute for proper backing procedures. Always turn to check what is behind you before backing up.



# NISSAN SAFETY SHIELD® PHILOSOPHY

## INNOVATION THAT LOOKS OUT FOR YOU.

What if you had the confidence you need for every part of your drive? The Nissan Safety Shield® technologies are a comprehensive approach to safety that guide the engineering and development of every vehicle we make. By keeping an eye on the vehicle's systems and the surroundings, assisting in handling unexpected situations, and helping to keep you safe in the unfortunate event of an accident, the Nissan Safety Shield® technologies are our way of looking out for you and yours.

### MONITOR

Smart technologies are designed to help monitor conditions. Like a warning to let you know you're straying from your lane, or a system that helps ensure you're travelling on properly inflated tires.

**Standard Tire Pressure Monitoring System with Easy-Fill Tire Alert<sup>1,2</sup>**  
Lets you know when a tire is low. And Easy-Fill Tire Alert takes the guesswork out of filling your tires, with a beep of the horn when you've reached the correct pressure.

**Available: Smart Auto Headlights, RearView Monitor,<sup>3</sup> Blind Spot Warning,<sup>4</sup> Lane Departure Warning<sup>5</sup> and Moving Object Detection<sup>6</sup>**

### RESPOND

Whether you need to hit the brakes hard or manoeuvre around an unexpected obstacle, these standard technologies help you respond to a potentially harmful situation.

**Vehicle Dynamic Control** helps you maintain your steered path.<sup>7</sup>

**Traction Control System** helps reduce wheelspin in low-traction situations.

**Anti-lock Braking System** helps you maintain steering control around obstacles while braking heavily.

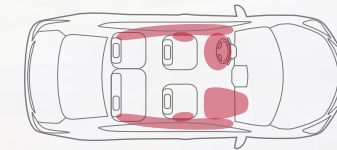
**Electronic Brake force Distribution** sends extra force to the rear brakes when you have additional weight of passengers or cargo in the back.

**Brake Assist** helps apply maximum braking force if it detects hard braking and senses you are in an emergency situation.



### PROTECT

When a collision is unavoidable, Nissan's Zone Body construction helps absorb the impact while the advanced seat belt and airbag systems help protect passengers.



**6** STANDARD AIRBAGS<sup>8</sup>

**Nissan Advanced Airbag System with dual-stage supplemental front airbags with seat-belt and occupant-classification sensors<sup>8</sup>**

**Front seat-mounted side-impact supplemental airbags<sup>8</sup>**

**Roof-mounted curtain side-impact supplemental airbags<sup>8</sup>**

**LATCH System (Lower Anchors and Tethers for Children)**

**snuggly kids®** Nissan safety engineers have dedicated thousands of hours to evaluating hundreds of child restraints in Nissans. The result: An industry first, The Snuggly Kids® Child Safety Seat Fit Guide. This guide lists child seats that fit the rear seats of Nissan vehicles, as well as offers invaluable tips on correct installation. Look for the latest Fit Guide at [Nissan.ca/owners/en](http://Nissan.ca/owners/en)

Scan this with your QR code-reader app to see a short video on how Snuggly Kids® helps you find the right CRS for your Nissan. Or go to [bit.ly/snugglykids-EN](http://bit.ly/snugglykids-EN)



<sup>1</sup>Tire Pressure Monitoring System is not a substitute for regular tire pressure checks. <sup>2</sup>Vehicle must be on for the Easy-Fill Tire Alert to operate. <sup>3</sup>Parking aid/convenience feature. Cannot completely eliminate blind spots or warn of moving objects. May not detect every object. Always check surroundings before moving vehicle. Not a substitute for proper backing procedures. Always turn to check what is behind you before backing up. <sup>4</sup>The Blind Spot Warning System is not a substitute for proper lane change procedures. The system will not prevent contact with other vehicles or accidents. It may not detect every vehicle or object around you. <sup>5</sup>Lane Departure Warning System operates only when the lane markings are clearly visible on the road. Speed limitations apply. See Owner's Manual for details. <sup>6</sup>Moving Object Detection cannot completely eliminate blind spots and may not detect every object. MOD operates at vehicle speeds below 5 mph. Always check surroundings before moving vehicle. Not a substitute for proper backing procedures. Always turn to check what is behind you before backing up. <sup>7</sup>VDC, which should remain on when driving except when freeing the vehicle from mud or snow, cannot prevent accidents due to abrupt steering, carelessness, or dangerous driving techniques. Always drive safely. <sup>8</sup>Airbags are only a supplemental restraint system; always wear your seat belt. Even with the occupant-classification sensor, rear-facing child restraints should not be placed in the front-passenger's seat. Also, in addition to any other requirement of applicable law, all children 12 and under should ride in the rear seat properly secured in child restraints, booster seats, or seat belts according to their size. Airbags will only inflate in certain accidents; see your Owner's Manual for more details. Inflated airbags shown for illustration purposes only; actual coverage area may differ. Airbags deflate after deployment.

## CHOOSE YOUR TRIM LEVEL

### 2.5

2.5-litre DOHC 16-valve 4-cylinder engine, engine block heater, Xtronic CVT® (Continuously Variable Transmission), Active Understeer Control, Vehicle Dynamic Control (VDC), Traction Control System (TCS), fog lights, remote keyless entry with Push Button Ignition, Advanced Drive-Assist™ Display, Bluetooth® Hands-Free Phone System<sup>1</sup> and streaming audio via Bluetooth® wireless technology,<sup>1</sup> Tire Pressure Monitoring System (TPMS) with Easy-Fill Tire Alert, AM/FM/CD audio system with four speakers, illuminated steering wheel-mounted audio controls, cruise control, air conditioning, 60/40 split fold-down rear seatbacks, front-passenger seatback pocket, dual chrome exhaust finishers, six airbags



### 2.5 S

INCLUDES 2.5 EQUIPMENT PLUS:

Nissan Intelligent Key®, heated outside mirrors, 6-way power adjustable driver's seat, Tire Pressure Monitoring System (TPMS) with individual tire pressure display and Easy-Fill Tire Alert, Remote Engine Start System, RearView Monitor, upgraded audio system with 127 mm (5") colour display and speed-sensitive volume control, USB connection port for iPod® interface, SiriusXM Satellite Radio,<sup>2</sup> NissanConnectSM Apps, hands-free text messaging assistant, air conditioning with in-cabin microfilter, Smart Auto Headlights, sun visors with illuminated vanity mirrors and extensions



### 2.5 SV

INCLUDES 2.5 S EQUIPMENT PLUS:

17" Aluminum-alloy wheels, power sliding glass moonroof, heated front seats, Dual Zone Automatic Temperature Control (ATC), passenger-side front-window one-touch auto-up/down with auto-reverse, driver's seatback pocket, side cargo net, leather-wrapped steering wheel and shift knob

**KEY AVAILABLE PACKAGE:** Technology Package<sup>3</sup>



U.S. instrumentation shown.

### 2.5 SL

INCLUDES 2.5 SV EQUIPMENT PLUS:

Leather-appointed seats, Bose® Premium Audio System with nine speakers, wood-tone trim (Beige interior) and metallic-tone trim (Charcoal interior), heated steering wheel, rear passenger air conditioning vents, 8-way power adjustable driver's seat, driver's seat power adjustable lumbar support, heated front seats, LED taillights, manual folding outside mirrors with LED turn signal indicators, HomeLink® universal garage door opener, auto-dimming inside rearview mirror compass, adjustable rear head restraints, mood lighting

**KEY AVAILABLE PACKAGE:** Technology Package<sup>3</sup>



Nissan Altima® Sedan 3.5 SL shown in Super Black.

### 3.5 SL with Technology Package<sup>3</sup>

INCLUDES 2.5 SL EQUIPMENT PLUS:

3.5-litre DOHC 24-valve V6 engine, 18" aluminum-alloy wheels, paddle shifters and manual shift mode, Nissan Navigation System with 178 mm (7") colour touch-screen monitor and voice recognition, SiriusXM Traffic<sup>2</sup>, Blind Spot Warning (BSW), Moving Object Detection (MOD), Lane Departure Warning (LDW)



<sup>1</sup>Availability of specific features is dependent upon the phone's Bluetooth® support. Please refer to your phone Owner's Manual for details. The Bluetooth word mark and logos are owned by Bluetooth SIG, Inc., and any use of such marks by Nissan is under licence. <sup>2</sup>XM and SiriusXM Satellite Radio is available in the 10 Canadian provinces and the 48 contiguous United States. Basic monthly subscription required and sold separately after trial period. SiriusXM Traffic is available in select North American markets. In Canada, at time of printing, incident and flow data is available for 7 metropolitan areas of Canada (Vancouver, Calgary, Edmonton, Toronto, Ottawa, Montreal and Quebec City). Limited flow data is available for Toronto. Subscription sold separately after trial period. All subscriptions subject to customer agreement at [siriusxm.ca/terms](http://siriusxm.ca/terms). All fees and programming subject to change. © 2013 Sirius XM Canada Inc. The Sirius, XM, and SiriusXM names and all related marks and logos are trademarks of Sirius XM Radio Inc. All other trademarks are the property of their respective owners. <sup>3</sup>Available on models produced after September 2, 2013. HomeLink® is a registered trademark of Johnson Controls Technology Company. Bose® is a registered trademark of The Bose Corporation. iPod® is a registered trademark of Apple, Inc. All rights reserved. iPod not included.

## PAINT AND FABRIC



CHARCOAL LEATHER



BEIGE LEATHER



CHARCOAL CLOTH

Nissan has taken care to ensure that the colour swatches presented here are the closest possible representations of actual vehicle colours. Swatches may vary slightly due to the printing process and whether viewed in daylight, fluorescent or incandescent light. Please see the actual colours at your local Nissan dealer.



Super Black KH3



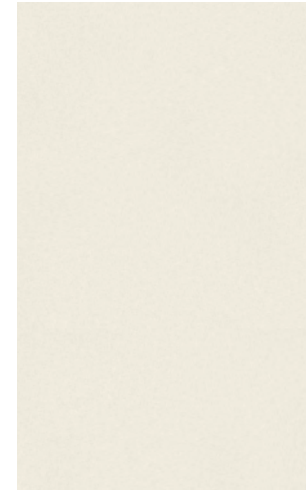
Cayenne Red<sup>1</sup> NAH



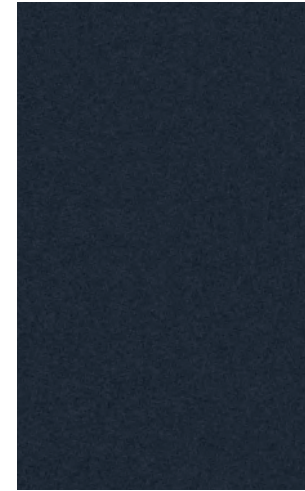
Java Metallic<sup>1</sup> CAJ



Brilliant Silver<sup>1</sup> K23



Pearl White<sup>1</sup> QAB



Storm Blue<sup>1</sup> RBD



Saharan Stone<sup>1</sup> KAH



Gun Metallic<sup>1</sup> KAD

■ Standard

<sup>1</sup>Extra cost option

	Super Black KH3				Cayenne Red <sup>1</sup> NAH				Java Metallic <sup>1</sup> CAJ				Brilliant Silver <sup>1</sup> K23				Pearl White <sup>1</sup> QAB				Storm Blue <sup>1</sup> RBD				Saharan Stone <sup>1</sup> KAH				Gun Metallic <sup>1</sup> KAD			
	2.5/2.5 S	2.5 SV	2.5 SL	3.5 SL <sup>2</sup>	2.5/2.5 S	2.5 SV	2.5 SL	3.5 SL <sup>2</sup>	2.5/2.5 S	2.5 SV	2.5 SL	3.5 SL <sup>2</sup>	2.5/2.5 S	2.5 SV	2.5 SL	3.5 SL <sup>2</sup>	2.5/2.5 S	2.5 SV	2.5 SL	3.5 SL <sup>2</sup>	2.5/2.5 S	2.5 SV	2.5 SL	3.5 SL <sup>2</sup>	2.5/2.5 S	2.5 SV	2.5 SL	3.5 SL <sup>2</sup>				
CHARCOAL CLOTH	■					■					■					■				■												
CHARCOAL LEATHER																																
BEIGE LEATHER																																

## GENUINE NISSAN ACCESSORIES

Every Genuine Nissan Accessory is: custom-fit, custom-designed and durability-tested; backed by Nissan's 3 year/60,000 km Accessories limited warranty; and can be financed when installed by dealer at time of purchase.<sup>3</sup>

### A. Rear Decklid Spoiler

May the downforce be with you.

### B. Trunk Protector<sup>4</sup>

Use your trunk, don't abuse it.

### C. Remote Engine Start System<sup>5</sup>

Warm it up, cool it down before you even get in.

### D. Body Side Mouldings

Stay fresh. Stay stylish.

### Additional Accessories:

- Illuminated Kick Plates
- Interior Accent Lighting
- All-season Floor Mats
- Carpeted Floor Mats
- Carpeted Trunk Mat
- Clear Rear Bumper Protector
- Trunk Sub-floor Organizer
- Hideaway Trunk Net
- External Ground Lighting
- And More



## BUYING AND OWNING

**Finance Options** Through Nissan Canada Finance, we offer many attractive purchase and lease programs, all with competitive rates and terms. With our flexible finance options, driving home a new Nissan has never been easier. Consult your local Nissan Dealership for complete details.

**No-Nonsense Warranty** Every 2014 Nissan is covered by a 3 year/60,000 km<sup>6</sup> Comprehensive New Vehicle Warranty, a 5 year/100,000 km<sup>6</sup> Powertrain Warranty, an 8 year/130,000 km<sup>6</sup> Emission Control Warranty on selected components, and a

5 year/unlimited km Corrosion Perforation Warranty. As a Nissan owner, you'll also receive a 3 year Roadside Assistance program available to you 24 hours a day. Terms, conditions and exclusions apply. See Warranty Information Booklet for complete details.

**Added Security Plan (ASP)** For ultimate peace of mind, consider the Nissan Added Security Plan. It's our commitment to be there for you, and to help you leave your worries behind. Different plans, available for both purchased and leased vehicles, let you tailor the coverage to your driving habits.

<sup>2</sup>3.5 SL with Technology Package. <sup>3</sup>See your Nissan Dealership and read the actual limited warranty. <sup>4</sup>Cargo and load capacity limited by weight and distribution. Always secure all cargo. <sup>5</sup>Provincial laws may apply; review local laws before using. <sup>6</sup>Whichever occurs first.

## FEATURES AND SPECIFICATIONS

Engine	2.5	2.5 S	2.5 SV	2.5 SL	3.5 SL <sup>1</sup>
QR25DE – 2.5-litre DOHC 16-valve 4-cylinder					
__Horsepower – 182 HP @ 6000 rpm					
__Torque – 180 lb-ft @ 4000 rpm					
VQ35DE – 3.5-litre DOHC 24-valve V6					
__Horsepower – 270 HP @ 6400 rpm					
__Torque – 251 lb-ft @ 4400 rpm					
Continuously Variable Valve Timing Control System (CVTCS)					
Variable induction system					
Nissan Direct Ignition System					
Electronic drive-by-wire throttle					
Engine block heater					

### Drivetrain

Front engine/Front-Wheel Drive					
Xtronic CVT <sup>®</sup> (Continuously Variable Transmission)					
Paddle shifters and manual shift mode					

### Brakes

11.7" Front vented disc/11.5" rear disc brakes					
4-wheel Anti-lock Braking System (ABS) with Electronic Brake force Distribution (EBD)					

### Suspension/Steering

Independent strut front suspension					
Multi-link independent rear suspension					
Front and rear stabilizer bars					
Active Understeer Control					
Electronic hydraulic power-assisted steering					

### Wheels/Tires

16" x 7.0" steel wheels with wheel covers					
17" x 7.5" aluminum-alloy wheels					
18" x 7.5" aluminum-alloy wheels					
P215/60TR16 all-season tires					
P215/55VR17 all-season tires					
P235/45VR18 all-season tires					

### Exterior Features

Smart Auto Headlights					
Projector-type halogen headlights					
Fog lights					
LED taillights					
Dual chrome exhaust finishers					
Dual body-colour power outside mirrors					
Manual folding outside mirrors with LED turn signal indicators					
Heated outside mirrors					
Power sliding glass moonroof with one-touch __open/close and tilt feature					
UV-reducing solar glass					

### Comfort/Convenience

Advanced Drive-Assist™ Display					
Nissan Navigation System with 178 mm (7") colour touch-screen __monitor and voice recognition <sup>2</sup>					
SiriusXM Traffic <sup>2,3</sup>					
NissanConnectSM Apps					
RearView Monitor					
Hands-free text messaging assistant					

Comfort/Convenience (continued)	2.5	2.5 S	2.5 SV	2.5 SL	3.5 SL <sup>1</sup>
Bluetooth <sup>®</sup> Hands-Free Phone System <sup>4</sup>					
HomeLink <sup>®</sup> universal garage-door opener					
Air conditioning					
Dual-zone Automatic Temperature Control (ATC)					
In-cabin microfilter					
Rear passenger air conditioning vents					
Power windows with one-touch driver-side __auto-up/down with auto-reverse					
Passenger-side front-window one-touch __auto-up/down with auto-reverse					
Power door locks with auto-locking feature					
Remote keyless entry with trunk release					
Push Button Ignition					
Nissan Intelligent Key <sup>®</sup>					
Remote Engine Start System					
Cruise control with steering wheel-mounted controls					
Fine Vision electroluminescent gauges					
Tilt and telescoping steering column					
Vehicle intermittent speed-sensitive flat-blade windshield __wipers					
Sun visors with vanity mirrors					
Sun visors with illuminated vanity mirrors and extension					
Auto-dimming inside rearview mirror with digital compass					
LED map lights and rear reading lights					
Mood lighting					
Overhead sunglasses holder					
Lockable glove compartment					
Four cup holders					
Front/rear door map pockets with bottle holders					
Driver seatback pocket					
Front-passenger seatback pocket					
Height-adjustable 3-point front seat belts					
12-volt DC power outlets (two)					
Side cargo net					

### Seating/Appointments

6-way manual adjustable driver's seat					
6-way power adjustable driver's seat					
8-way power adjustable driver's seat					
Driver's seat power adjustable lumbar support					
Cloth seat trim					
Leather-appointed seats					
Adjustable rear head restraints					
Heated front seats					
Heated steering wheel					
Leather-wrapped steering wheel					
Leather-wrapped shift knob					
Piano black trim					
Wood-tone trim (Beige Leather interior only)					
Metallic-tone trim (Charcoal Leather interior only)					
60/40 Split fold-down rear seatbacks with centre armrest					
Carpeted trunk lid trim					

### Audio/Entertainment

AM/FM/CD audio system					
AM/FM/CD audio system with 127 mm (5") colour display					
Bose <sup>®</sup> Premium Audio System with AM/FM/CD __and 127 mm (5") colour display					

Audio/Entertainment (continued)	2.5	2.5 S	2.5 SV	2.5 SL	3.5 SL <sup>1</sup>
Illuminated steering wheel-mounted audio controls					
Four speakers					
Six speakers					
Nine speakers					
Radio Data System (RDS)					
Speed-sensitive volume control					
Auxiliary audio input jack					
USB connection port for iPod <sup>®</sup> interface and other __compatible devices					
MP3/WMA CD playback capability					
SiriusXM Satellite Radio <sup>3</sup>					
Streaming audio via Bluetooth <sup>®</sup> wireless technology					
Diversity antenna					

### Safety/Security

Nissan Advanced Airbag System with dual-stage __supplemental front airbags with seat belt and __occupant-classification sensors					
Driver and front-passenger seat-mounted side-impact __supplemental airbags					
Roof-mounted curtain side-impact supplemental airbags __for front and rear-seat outboard occupant head protection					
Vehicle Dynamic Control (VDC) with Traction Control System (TCS)					
Blind Spot Warning (BSW) <sup>2</sup>					
Moving Object Detection (MOD) <sup>2</sup>					
Lane Departure Warning (LDW) <sup>2</sup>					
3-point ALR/ELR passenger seat belt system (ELR for driver)					
Front seat belts with pretensioners and load limiters					
LATCH System (Lower Anchors and Tethers for CHildren)					
Zone Body construction with front and rear crumple zones					
Hood-buckling creases, pipe-style steel side-door __guard beams, and energy-absorbing steering column					
Tire Pressure Monitoring System (TPMS) with Easy-Fill __Tire Alert					
Tire Pressure Monitoring System (TPMS) with individual __tire pressure display and Easy-Fill Tire Alert					
Immobilizer Key System					
Anti-theft system					

## PACKAGE

⊠ **Technology Package<sup>2</sup>** (2.5 SV, 2.5 SL)

Nissan Navigation System with 178 mm (7") colour touch-screen monitor and voice recognition • SiriusXM Traffic<sup>3</sup> • Blind Spot Warning (BSW) • Moving Object Detection (MOD) • Lane Departure Warning (LDW)

This package deletes in-mirror digital compass.

## DIMENSIONS/CAPACITIES/WEIGHTS/FUEL

Dimensions	
<b>Exterior – mm (inches)</b>	
Wheelbase	2775 (109.3)
Overall length	4863 (191.5)
Overall width	1830 (72)
Overall height	
__16"/17" Wheels	1471 (57.9)
__18" Wheels	1477 (58.1)
Track width (front/rear)	
__16"/17" Wheels	1585/1585 (62.4/62.4)
__18" Wheels	1575/1575 (62.0/62.0)

### Aerodynamics – cd

Drag coefficient 0.29 (measured on 2.5 S)

### Interior – mm (inches) (front/rear)

Head room without moonroof	1016/942 (40.0/37.1)
__With moonroof	992/942 (39.1/37.1)
Leg room	1143/917 (45.0/36.1)
Hip room	1371/1324 (54.0/52.1)
Shoulder room	1432/1432 (56.4/56.4)

### Capacities

Seating capacity	5
Interior passenger volume – L (cu. ft.)	2885 (101.9)
Cargo volume – L (cu. ft.)	436 (15.4)
Fuel tank – L (Imp gal)	68.1 (15)

### Curb Weights – kg (lbs)

<b>4-cylinder</b>	<b>2.5</b>	<b>2.5 S</b>	<b>2.5 SV</b>	<b>2.5 SL</b>
Base total	1416 (3122)	1420 (3131)	1437 (3168)	1451 (3199)
<b>V6</b>				<b>3.5 SL<sup>1</sup></b>
Base total				1524 (3360)

### 2014 Fuel Consumption Estimates – L/100 km (MPG)

	<b>4-cylinder</b>	<b>V6</b>
City	7.5 (38)	9.4 (30)
Highway	5.1 (55)	6.2 (46)

\_\_Actual mileage may vary with driving conditions – use for comparison only.

■ Standard ⊠ Part of Technology Package

<sup>1</sup>3.5 SL with Technology Package. <sup>2</sup>Available on models produced after September 2, 2013. <sup>3</sup>XM and SiriusXM Satellite Radio is available in the 10 Canadian provinces and the 48 contiguous United States. Basic monthly subscription required and sold separately after trial period. SiriusXM Traffic<sup>®</sup> is available in select North American markets. In Canada, at time of printing, incident and flow data is available for 7 metropolitan areas of Canada (Vancouver, Calgary, Edmonton, Toronto, Ottawa, Montreal and Quebec City). Limited flow data is available for Toronto. Subscription sold separately after trial period. All subscriptions subject to customer agreement at [siriusxm.ca/terms](http://siriusxm.ca/terms). All fees and programming subject to change. © 2013 Sirius XM Canada Inc. The Sirius, XM, and SiriusXM names and all related marks and logos are trademarks of Sirius XM Radio Inc. All other trademarks are the property of their respective owners. <sup>4</sup>Availability of specific features is dependent upon the phone's Bluetooth<sup>®</sup> support. Please refer to your phone Owner's Manual for details. The Bluetooth word mark and logos are owned by Bluetooth SIG, Inc., and any use of such marks by Nissan is under licence. Bose<sup>®</sup> is a registered trademark of The Bose Corporation. Google<sup>®</sup> is a registered trademark of Google Inc. HomeLink<sup>®</sup> is a registered trademark of Johnson Controls Technology Company. iPod<sup>®</sup> is a registered trademark of Apple, Inc. All rights reserved. iPod not included.

Nissan's environmental action plan focuses on several key areas. Increasing production of Zero Emission vehicles, including the 100% electric LEAF.<sup>™</sup> Improving fuel efficiency through our PUREDRIE<sup>™</sup> measures. And reducing the environmental impact of manufacturing, as seen at our new, energy-efficient, low-emissions paint plant in Tennessee.

