

Assurant[®] Vehicle Care

Lease Protection

Reliable wear and tear
coverage for leased vehicles



ASSURANT[®]



Peace of mind for the road ahead

So you just signed the lease on your dream car, and you couldn't be happier. And why not? Leasing offers a great option for short-term vehicle use and can provide a worry-free experience. But, as we all know, sometimes, life has other plans. **No matter how hard you try to protect your leased vehicle**, dents, dings, and scratches happen along the way. And, while some normal wear is expected, **excess wear can result in additional charges** you weren't expecting to pay at the end of your lease term.

Lease protection can help guard against these unexpected charges. It waives your financial responsibility for excess wear and tear charges at the end of your lease term. Without this protection, you could end up paying for costly repairs or risk losing a portion of your security deposit.

- ✓ **Cost-effective**
Save money in the event you incur end-of-lease wear and tear repair costs
- ✓ **Flexible**
Choose the level of protection that makes sense for your needs and budget
- ✓ **Extendible**
Rest assured knowing you're covered, even if you and your dealer agree to extend your lease or return your vehicle early



Help protect yourself from end-of-lease repair costs

Lease Protection offers protection against end-of-lease wear and tear charges. And you have **two coverage options** to choose from:

	Premium	Standard
● Coverage waives up to \$5,000	✓	✓
● \$1,000 single event limit (N/A in FL)	✓	✓
● Turn in the vehicle within 90 days prior to or up to 90 days following the scheduled termination date*	✓	✓
● Turn in the vehicle anytime prior to or up to one year following the scheduled termination date*	✓	

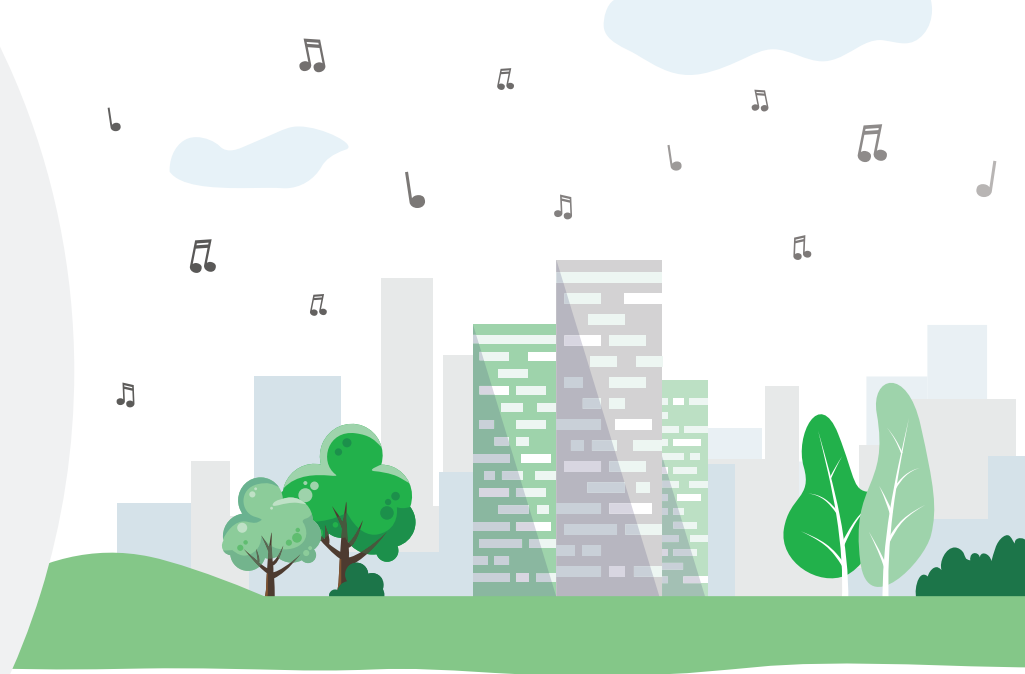
* If allowed by your lease agreement. You'll be responsible for early termination charges and early additional monthly lease payments during any lease agreement extension.

Coverage you can count on

Examples of covered items:

- Paint damage, scratches, and surface dents
- Factory entertainment system
- Windshield and side glass chips
- Door, hatch, and tailgate rubber seals
- Door, trunk, and hatch handles
- Hood ornaments and body insignia
- Alloy and steel wheels and wheel covers
- Tires with less than 3/32" of tread depth
- Chrome, bright metal, moldings, and trim
- Carpet tears, stains, and spotting
- Upholstery rips, tears, stains, and spotting
- Sideview and rearview mirrors
- Bumper(s), bumper covers, step bumpers, and surrounding bumper trim
- Muffler(s) and tailpipe
- Lenses of headlamps, running lights, and fog lights
- Tail, turn signal, and brake light bulbs





Provided by Selling Dealer or Lender

Administered By:

STATE

COMPANY

FL

United Service Protection, Inc.

OK

Assurant Service Protection, Inc.

**Other states
where available**

United Service Protection Corporation

Not available in all states

Limitations of Coverage:

The information in this brochure is intended to provide only an outline of the coverages, exclusions, and limitations of the optional Assurant Vehicle Care Lease Protection product.

For exact coverage, exclusions, and limitations, please review the Assurant Vehicle Care Lease Protection Agreement Amendment.

Mailing address:

P.O. Box 7719

The Woodlands, TX 77387

1-877-394-1206



ASSURANT®