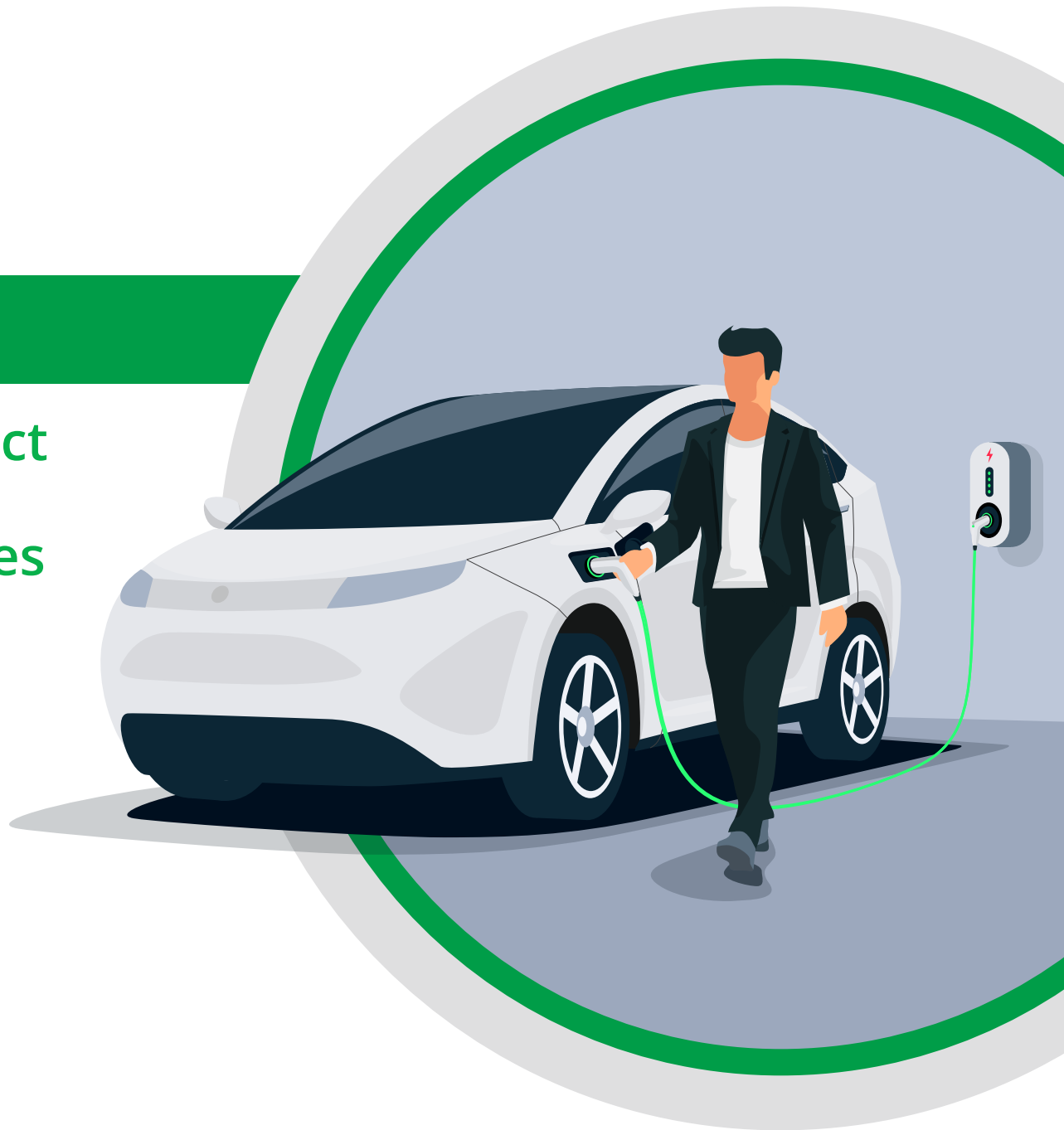


# Assurant<sup>®</sup> EV One

## Protection

Vehicle Service Contract  
for Plug-In Hybrid and  
Battery Electric Vehicles

Go ahead. Go electric.



ASSURANT<sup>®</sup>



## Keep the energy going.

**You've got your eye on an amazing electric vehicle. And you can't wait to get behind the wheel. So you can drive the latest, most state-of-the-art technology. Save money on gas. And do your part for the environment.** But how do you know all that new technology will stand up to the test of time? Will the cost of maintenance and repairs take a toll on your budget? After all, electric vehicles are more advanced than traditional cars. And that means they can be more expensive to maintain. Especially those big-ticket items like the lithium-ion/traction battery.

Introducing Assurant EV One Protection. EV One takes the worry out of electric vehicle ownership. **It covers mechanical breakdowns related to EV components, multimedia touch screens, navigation, sensors, and more,** after the factory warranty expires — including that expensive battery. It also covers wear and tear to maintain certain items that aren't covered by your manufacturer's warranty, like brake pads, wheel alignment, and headlamp bulbs.

EV One protects your vehicle for up to four years after your factory warranty ends. **And your lithium-ion/traction battery is covered for up to 200,000 miles.** You'll also get emergency roadside assistance in all 50 states and Canada, in case you run out of power on the road. You'll even get help with substitute transportation and emergency travel expenses (N/A in NY) if you're without your vehicle during repairs. So keep your life moving forward and money managed while driving the most cutting-edge car on the road — worry-free. **Go ahead. Go electric.**



### The Confidence to Go Electric

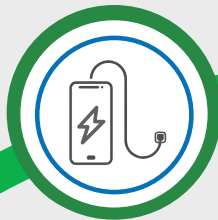
- ✔ **More Protection**  
EV One Protection covers repair costs in the event of a mechanical breakdown — including high-tech items and the lithium-ion/traction battery. It also covers wear and tear maintenance of covered items. It even provides extra benefits like roadside assistance and emergency travel expense reimbursement (N/A in NY).
- ✔ **Better Protection**  
EV One Protection is available for new or used battery electric and plug-in hybrid vehicles regardless of technology or brand.
- ✔ **Flexible Protection**  
EV One Protection is designed to meet the needs of those who own or lease, including the cost of covered maintenance items and certain lease-related costs and obligations.



## The Peace of Mind to Go Electric

Your lithium-ion/traction battery is covered up to 200,000 miles.

Assurant EV One Protection will repair or replace the traction battery if it drops below 70% state of health or fails to function for a reason other than wear and tear, normal deterioration, or negligence.



Lithium-Ion/Traction  
Battery:\*\*  
**\$2,250 - \$27,000**

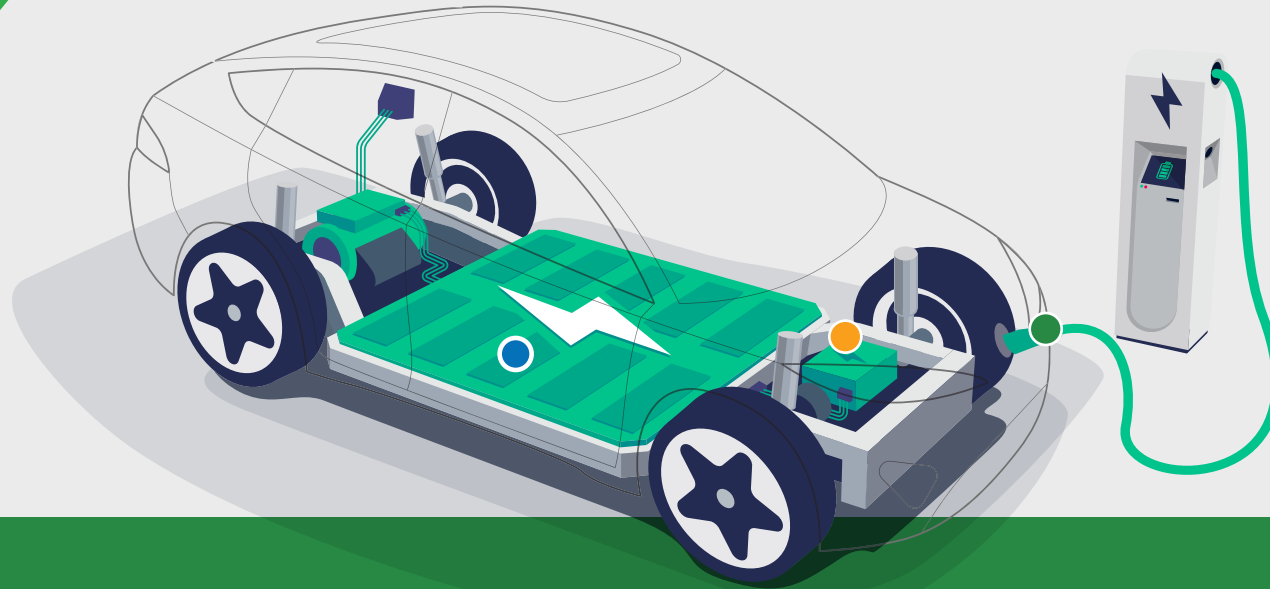


Battery  
Control Module:  
**\$1,525**



Charge  
Connector Cable:  
**\$267\*\*\***

**Battery  
components  
covered**  
Potential repair costs  
if unprotected\*

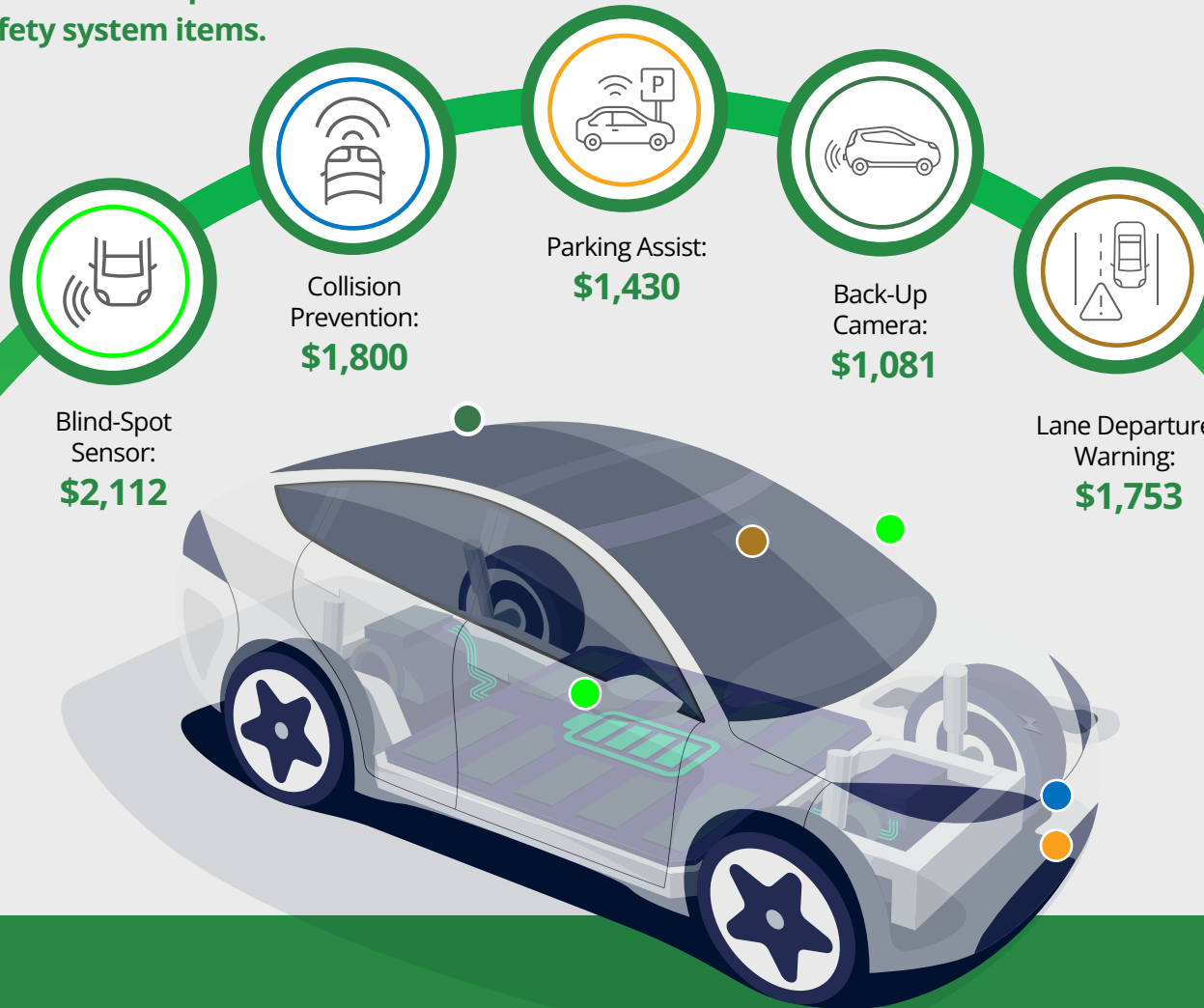


\*The repair costs shown above are for illustrative purposes. They are based on the actual claim experience of Automotive Warranty Services, Inc. and its affiliated companies' customers as of July 2022. Actual cost may vary by vehicle, year, make, and model. \*\*Average battery replacement cost for midline vehicles is \$2,250 to \$27,000. For luxury models, battery replacement can exceed \$40,000. Your experience may be different. Visit [recurentauto.com](https://www.recurentauto.com) to learn more about battery electric and plug-in hybrid vehicle battery life. \*\*\*Average retail cost.

# Assurant<sup>®</sup> EV One

## The Peace of Mind to Go Electric

Assurant EV One Protection will repair or replace covered safety system items.



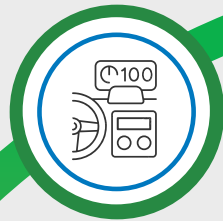
**Safety systems covered**  
Potential repair costs if unprotected\*

\*The repair costs shown above are for illustrative purposes. They are based on the actual claim experience of Automotive Warranty Services, Inc. and its affiliated companies' customers as of July 2022. Actual cost may vary by vehicle, year, make, and model.

# Assurant<sup>®</sup> EV One

## The Peace of Mind to Go Electric

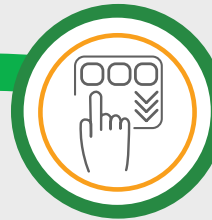
Advanced — and costly — covered electronics and interactive controls will be repaired or replaced.



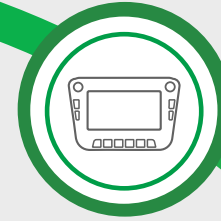
Heads-Up Display:  
**\$2,273**



Adaptive  
Cruise Control:  
**\$1,885**



Onboard  
Computers:  
**\$1,671**



Navigation  
System:  
**\$2,363**

**Onboard  
controls covered**  
Potential repair  
costs if unprotected\*

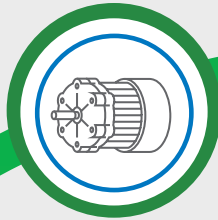


\*The repair costs shown above are for illustrative purposes. They are based on the actual claim experience of Automotive Warranty Services, Inc. and its affiliated companies' customers as of July 2022. Actual cost may vary by vehicle, year, make, and model.

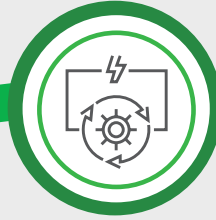
# Assurant<sup>®</sup> EV One

## The Peace of Mind to Go Electric

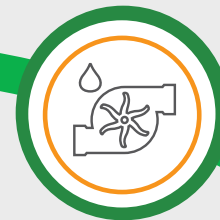
And it provides comprehensive coverage up to 4 years.



Transaxle:  
**\$4,200**

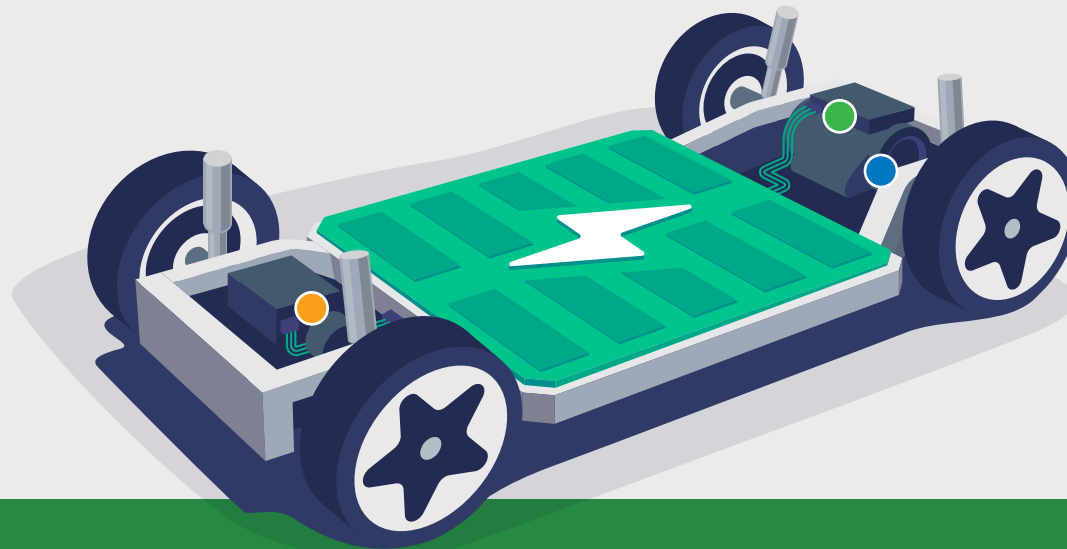


Auxiliary Heater:  
**\$1,325**



Water Pump:  
**\$930**

**Mechanical components covered**  
Potential repair costs if unprotected\*



\*The repair costs shown above are for illustrative purposes. They are based on the actual claim experience of Automotive Warranty Services, Inc. and its affiliated companies' customers as of July 2022. Actual cost may vary by vehicle, year, make, and model.

## EV One. Keep the energy going.

EV One Protection covers wear and tear maintenance items that aren't covered by the factory warranty. And you're never out of range with our 24/7 roadside assistance to get you to the most convenient charging station. And it includes yearly inspections at no additional cost to ensure your electric vehicle stays safe to drive and to help you monitor the health of your battery.

### Wear and Tear coverage



#### Headlamp bulbs

Unlimited replacement of headlamp bulbs (damage due to impact isn't covered)



#### Brake pads

One replacement of a set of front and/or rear brake pads; brake rotors may be replaced in conjunction with the replacement of brake pads if the thickness of the brake rotor is less than the manufacturer's minimum specification



#### Belts and Hoses

One replacement of each engine belt and hose listed here: vacuum pump belt, serpentine belt, alternator belt, AIR pump belt, air conditioner belt, water pump belt, heater hose, bypass hose, throttle body hose, upper and lower radiator hoses, air conditioning hose, air hose, washer hoses, vacuum hoses, and fuel hoses



#### Windshield wiper blades/inserts

One replacement of a set of front and/or rear windshield wiper and/or inserts



#### Electrical fuses

Unlimited coverage of electrical fuses, interior, and exterior light bulbs (damage due to impact isn't covered)



#### Wheel alignment

One wheel alignment

### Diagnostics

In the event of a covered breakdown, we will pay the reasonable cost of diagnostic charges.

## Additional Benefits



### Emergency Roadside Assistance

No out-of-pocket expense up to a \$200 maximum available 24/7, including towing, fluid delivery, flat tire, lock-out, and battery assistance



### Emergency Travel Expense Reimbursement<sup>†</sup>

For disablement 100 miles or more from home when your vehicle is held overnight by repair facility for covered repair up to \$200 per day (5-day maximum) for lodging, meals, and transportation expense

<sup>†</sup> Not available if purchased in NY



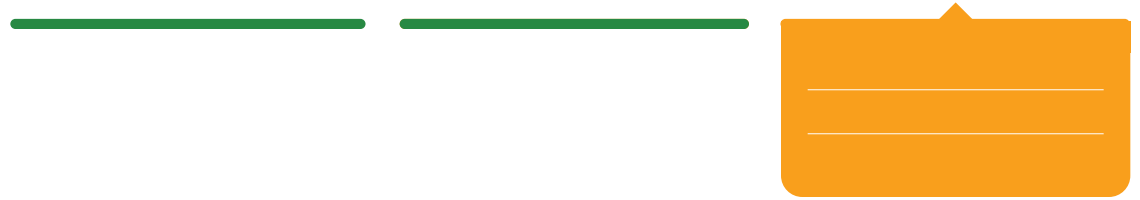
### Substitute Transportation

Coverage is provided up to \$40 per day for rental car or rideshare reimbursement if the vehicle is held by a repair facility for a covered repair (10-day maximum); substitute transportation reimbursement is available beginning on the first day of the covered repair

## Comprehensive Annual Inspection

An annual inspection scrutinizes most vehicle systems at no cost to you. Includes high-cost items like the lithium-ion battery, EV propulsion system, regenerative braking system, sensors, and multimedia touch display.





## What's Not Covered

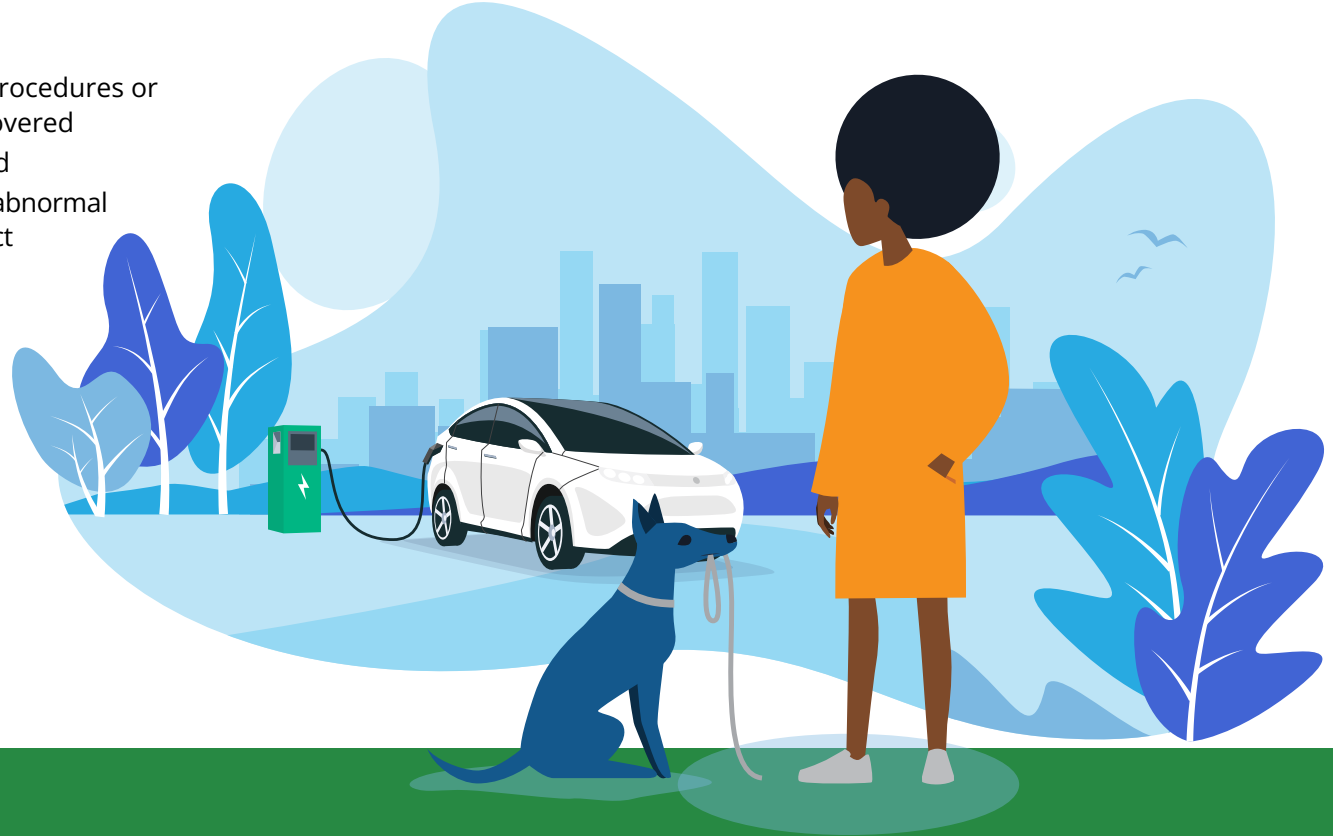
### Limitations of Coverage

The information in this brochure is intended to provide only an outline of the coverages, exclusions, and limitations of your optional Assurant EV One Protection Vehicle Service Contract. **Used or remanufactured parts may be used.** For exact coverages, exclusions, and limitations, please review the Assurant EV One Protection Vehicle Service Contract.

### Exclusions

- Damage due to not following proper charging procedures or use of an incompatible charging device is not covered
- Damage caused by a power surge is not covered
- Failure due to power surges, power overloading, abnormal use, and damage due to inappropriate or incorrect charging sources
- Failure to comply with the vehicle manufacturer's recommendations in the use, charging, storage, and servicing of the traction battery
- Pre-existing breakdown which existed prior to or was caused by a condition which existed prior to the purchase date

Please review the Vehicle Service Contract for complete details.

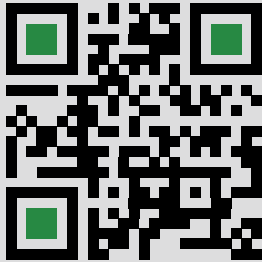


Ask your dealer for information about price and availability in your area.



## Provided and Administered By:

State	Company
FL	<b>United Service Protection, Inc.</b> <b>FL License #60016</b>
OK	Assurant Service Protection, Inc. OK License #44199246
MA	Provider: Selling Dealer Administrator: United Service Protection Corporation
Other states where available	United Service Protection Corporation TX License #106
<b>All located at:</b> <b>P.O. Box 7719</b> <b>The Woodlands, Texas 77387</b>	<b>1-800-621-2130</b> <a href="http://vehiclecareplan.com">vehiclecareplan.com</a>



Scan to access online support and to download and register for the Vehicle Care by Assurant app.

Take the hassle out of vehicle care by managing claims, maintenance services, policies, and important documents in one place. It's never been easier to care for your car.

