



SONATA  
2016



# NEW THINKING. NEW POSSIBILITIES.

Status quo is nothing more than a starting point for our research and development. Through new thinking we continue to uncover new territories in innovation, engineering and design. A vehicle is no longer simply a means of transportation; it is an extension of you. By questioning and not simply accepting convention, we continue to push the boundaries to provide new possibilities and experiences that go beyond your expectations.

This is the [H-Factor](#).



## REDEFINING THE SEDAN

Evolved over seven generations of progress, the 2016 Sonata continues to define the intermediate sedan segment. The innovative design makes a bold statement of confidence and refinement, while the intuitively-designed cabin is equipped with an extensive list of advanced safety technologies. Simply put, the 2016 Sonata is the answer to the question, "What will Hyundai think of next?"





## THE EVOLUTION OF SOPHISTICATION

Fluidic Sculpture 2.0, the latest evolution of Hyundai's signature design language, takes classic proportions and infuses them with modern lines to evoke emotion and captivate attention. The distinctive lines of the 2016 Sonata flow into a commanding hexagonal front grille, framed by swept back headlights and standard LED Daytime Running Lights.





# SOPHISTICATION MEETS ATHLETIC EDGE

More aggressive design elements can be found on the Sonata 2.0T Sport Ultimate model. Standard 18-inch aluminum alloy wheels and quad exhaust outlets integrated into a unique rear diffuser deliver a striking, athletic stance.

# DRIVER-CENTRIC DESIGN

Human Machine Interface (HMI) is our interior design principle, which aims to apply our research in ergonomics to deliver a driver-oriented cabin intuitively laid out for comfort and convenience. Consider the T-shaped centre-stack layout with clearly defined control groupings, the available navigation display screen that is optimally positioned to help you keep your eyes on the road, or the steering wheel-mounted controls that are grouped by function for simpler interaction.

In addition to a refined layout, the 2016 Sonata features an extensive list of amenities including a standard 5-inch colour touch-screen display and rearview camera, a standard Bluetooth® hands-free phone system and an available hands-free smart trunk.



**AVAILABLE 8-INCH TOUCH-SCREEN NAVIGATION SYSTEM WITH REARVIEW CAMERA**



**AVAILABLE D-CUT HEATED STEERING WHEEL**



**AVAILABLE LEATHER SEATING SURFACES WITH CONTRAST STITCHING**



**AVAILABLE REAR SIDE WINDOW SUN SHADES**



May not be exactly as shown.





## DRIVING DYNAMICS IN HARMONY

The 2016 Sonata was tested and fine-tuned at Germany's extremely demanding Nürburgring racing circuit. This challenging process crafted a well-balanced vehicle with composed handling performance and ride comfort. Under the hood, the standard 2.4L Gasoline Direct Injection (GDI) 4-cylinder engine mated to a 6-speed automatic transmission delivers 185 horsepower. Drivers seeking greater thrust can opt for an available turbocharged 2.0L engine producing 245 horsepower and 260 lb-ft of torque.

# AWARD WINNING SAFETY

Designated a 2015 Top Safety Pick+ by the Insurance Institute for Highway Safety (IIHS), the Sonata was engineered with your safety as a top priority. The vehicle body was constructed using advanced high-strength steel forged in Hyundai's own mill for exceptional stiffness and rigidity to deliver enhanced driving dynamics and occupant protection. Packed with standard features such as seven airbags<sup>1</sup> and an array of available driver assistance and situational awareness technologies, the 2016 Sonata surrounds you with innovative safety.



WHEN EQUIPPED WITH AVAILABLE AUTONOMOUS EMERGENCY BRAKING (AEB)  
For more information visit [www.iihs.org](http://www.iihs.org)



## Blind Spot Detection<sup>4</sup> and Rear Cross-Traffic Alert<sup>5</sup>

Blind Spot Detection uses radar to detect when a vehicle is in the driver's blind spot and provides both an audible and a visual alert to help keep you aware as you move down the road. When reverse gear is selected, Rear Cross-Traffic Alert helps identify and warn the driver of vehicles approaching from the side, even before they come into view of the standard rearview camera.



## Lane Departure Warning System<sup>3</sup>

Drift outside your lane without signaling and this available system is designed to inform you with audible and visual cues.



## Autonomous Emergency Braking<sup>7</sup>

The available Autonomous Emergency Braking function uses a forward camera and radar sensors to detect rapid closing speeds to the vehicle ahead. If a potential forward collision is detected, warning notifications alert the driver. At speeds under 80 kilometres per hour, the system can provide full braking assistance to help avoid a potential collision.



## 7 Standard Airbags<sup>1</sup>

The Sonata features seven standard airbags including a driver's knee airbag for added protection.



## High Beam Assist

With the available High Beam Assist system, a front camera continuously monitors traffic situations to automatically turn high beams on or off.



## Standard Rearview Camera

Whether you are pulling out from a narrow driveway or parking parallel in-between two cars, the standard rearview camera will help guide you (available 8-inch touch-screen shown).



# 2016

# SONATA FEATURES



## SMART TRUNK

This available feature makes loading and unloading your 2016 Sonata more convenient. The hands-free smart trunk unlocks automatically when it senses that the proximity key is within three feet for more than three seconds.



## ADAPTIVE CRUISE CONTROL<sup>6</sup>

An available Adaptive Cruise Control system with stop-and-go capability carefully adjusts your pre-set speed and distance from the vehicle ahead. It will even come to a full stop and then start again, without driver input, when the vehicle has been stopped for less than three seconds.



## PANORAMIC SUNROOF

Enjoy the sun, the moon and the stars through the available panoramic sunroof that spans above both front and rear passengers.



## 8-INCH TOUCH-SCREEN NAVIGATION SYSTEM WITH REARVIEW CAMERA

Help avoid wrong turns with high-resolution maps and easy-to-follow directions thanks to an available touch-screen navigation system with rearview camera.



## DRIVER'S INTEGRATED MEMORY SYSTEM

Switch between two driver profiles at the touch of a button with the available Integrated Memory System (IMS). It automatically resets the driver's preferred seating position and corresponding side mirror adjustments.



## 2.0T SPORT INTERIOR STYLING

The aggressive styling of the 2016 Sonata 2.0T Sport Ultimate model extends into the cabin. Sporty design cues include more heavily bolstered seats with leather surfaces, a D-cut heated steering wheel with paddle shifters, and a unique instrument cluster with crisp graphics. For added flare, a colour pack with orange contrast piping and stitching is available with select exterior colours.



## HEATED STEERING WHEEL

In addition to standard steering wheel-mounted audio, cruise and Bluetooth® controls, the 2016 Sonata features an available leather-wrapped heated steering wheel for added comfort and warmth.



## HEATED AND VENTILATED FRONT SEATS

Stay warm during Canada's colder months with standard heated front seats. When the weather heats up, available ventilated front seats will keep you cool. Plus, find eight ways to further perfect your comfort with the available 8-way power-adjustable driver's seat with power lumbar support.



## REAR SEAT COMFORT

Your rear seat passengers will thank you for the luxury of available rear climate control vents and available heated rear seats.



## STANDARD ALLOY WHEELS

Standard 16-inch aluminum alloy wheels compliment the sophisticated styling of the 2016 Sonata. If your heart desires, go bigger with available 17-inch or 18-inch aluminum alloy wheels (available 18-inch wheels shown).



# 5

5-YEAR/100,000 KM  
**COMPREHENSIVE LIMITED  
WARRANTY†**

5-YEAR/100,000 KM  
**POWERTRAIN WARRANTY**

5-YEAR/100,000 KM  
**EMISSION WARRANTY**

5-YEAR/UNLIMITED KM  
**ROADSIDE ASSISTANCE  
PROGRAM\*\***

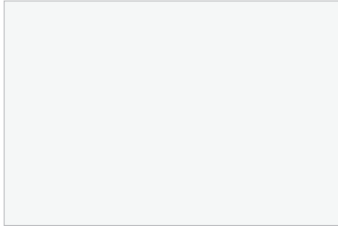


You will see that a number of our vehicles have received multiple awards from the most reputable third party organizations, so you can take their word when it comes to the quality, design and safety of our vehicles. This quality is equally matched by the quality of our warranty. We stand confidently behind our products to give you the ultimate peace of mind with a 5-year/100,000 km comprehensive limited warranty, one of the best-backed warranties in Canada. We also provide a 5-year/unlimited km Roadside Assistance Program\*\* featuring flat tire changing, lockout service and more. Just one toll-free call away, 24 hours a day.

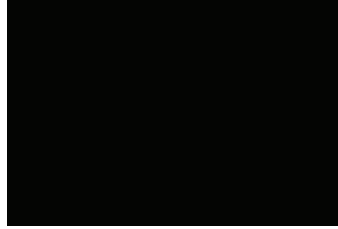
THERE'S NO SUBSTITUTE FOR  
**PEACE OF MIND**

# COLOURS

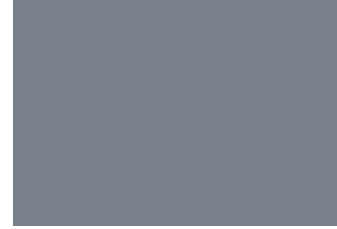
## EXTERIOR



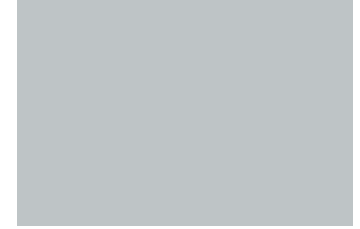
**ICE WHITE**



**BLACK NOIR PEARL**



**POLISHED METAL**



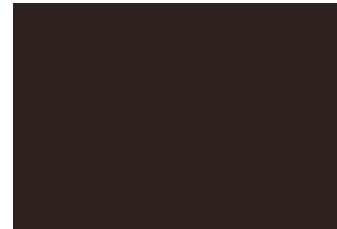
**PLATINUM SILVER**



**COAST BLUE**

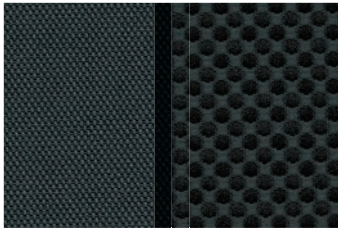


**VENETIAN RED**



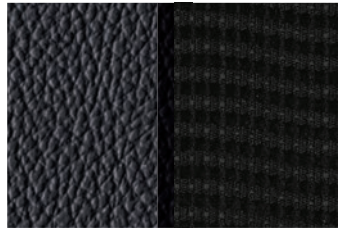
**DARK HORSE**

## INTERIOR



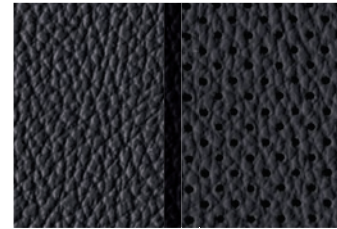
**BLACK CLOTH**

Standard on 2.4L GL and GLS models.



**BLACK CLOTH/LEATHERETTE**

Standard on 2.4L Sport Tech model.



**BLACK LEATHER**

Standard on 2.4L Limited model.



**BLACK LEATHER SPORTS SEATS WITH BLACK PIPING**

Standard on 2.0T Sport Ultimate model.



**BLACK LEATHER SPORTS SEATS WITH ORANGE PIPING**

Available on 2.0T Sport Ultimate model (Ice White, Black Noir Pearl, Polished Metal and Platinum Silver only).

Choice of interior colour depends upon model and/or exterior colour selection. Due to the print production process, the colours shown throughout this brochure vary slightly from actual hue. Textures may not be exactly as shown. Visit [hyundaicanada.com](http://hyundaicanada.com) or see your dealer for details.



#### REAR BUMPER PROTECTOR

Help protect the finish on your bumper from chips and scratches, when loading and unloading the cargo area, with this durable, custom-fit rear bumper protector.



#### MUD GUARD KIT

Custom-fit mud guards help keep the dirt and debris of everyday driving where it belongs.



#### PLASTIC HOOD PROTECTOR

Help prevent dents and scratches caused by road and vehicle debris with an attractive plastic hood protector.



#### CARGO NET

A custom-fit cargo net ensures everything you're transporting remains organized and in place by preventing items from sliding around.



#### PREMIUM ALL WEATHER FLOOR LINERS

Premium all weather floor liners were designed to cover the interior carpet providing maximum protection against the elements that other mats cannot offer. Their unique and durable design features a non-slip surface for added comfort and a long lasting premium look. Remove carpet mats prior to installation.



#### ACCESSORY FRAME

An accessory frame makes it quick and easy to attach hitch-mounted cargo equipment, such as bikes and ski racks. End cap included. Frame not intended for towing.



#### PREMIUM ALL WEATHER CARGO TRAY

Protect your interior cargo area with style. This durable, custom-fit premium cargo tray protects from spills and messy loads while helping keep your cargo area looking new for years to come.



#### SIDE VISORS

Compliment your vehicle with a sleek and durable set of side visors that will help reduce glare while providing you with fresh air. Custom made for your vehicle using high quality reinforced tinted acrylic plastic, these visors will look good on your vehicle for years to come.

# SONATA SPECIFICATIONS

2.4 GL	STANDARD EQUIPMENT INCLUDES:	
2.4L GDI I4 (185 hp, 178 lb-ft)	Automatic headlights	
6-speed automatic transmission	Remote keyless entry with alarm	
Drive Mode Select	60/40 split-fold rear seats	
VSM/ESC/TCS <sup>2</sup> /ABS	Heated front seats	
7 airbags <sup>1</sup> including driver's knee	Tilt-and-telescopic steering column	
Cruise control	Steering wheel-mounted audio and telephone controls	
16" aluminum alloy wheels	6-way manually-adjustable front seats (incl. height)	
LED Daytime Running Lights	5.0" colour touch-screen audio display	
Black cloth seating surfaces	Rearview camera	
Power windows with driver's auto up/down	Bluetooth <sup>®</sup> hands-free phone system	
Heated, power-adjustable rearview mirrors	6-speaker AM/FM/SiriusXM <sup>™</sup> /CD/MP3 audio system	
Air conditioning	iPod <sup>®</sup> /USB/Auxiliary connectivity	
2.4 GLS	INCLUDES GL STANDARD EQUIPMENT PLUS:	
LED side mirror turn signal repeaters	Chrome door handles with welcome lights	
Power sunroof	Rear heated seats	
Proximity keyless entry with push-button ignition	8-way power-adjustable driver's seat with adjustable lumbar	
Hands-free 'Smart Trunk'	Dual-zone automatic climate control	
Heated steering wheel	Rear parking assistance sensors	
Leather-wrapped steering wheel and gear shift knob	Blind Spot Detection (BSD) <sup>4</sup> with Lane Change Assist (LCA) and Rear Cross-Traffic Alert (RCTA) <sup>5</sup>	
2.4 SPORT TECH	INCLUDES GLS STANDARD EQUIPMENT PLUS:	
8.0" touch-screen navigation system	Windshield wiper de-icer	
7-speaker Dimension <sup>®</sup> audio system	17" aluminum alloy wheels	
LED tail lights	Dual exhaust outlets and deluxe side sills	
Cloth/leatherette seats	Artificial leather door trim inserts	
Panoramic sunroof		
2.4 LIMITED	INCLUDES SPORT TECH STANDARD EQUIPMENT PLUS:	
Bi-Xenon HID headlights with High Beam Assist (HBA)	9-speaker Infinity <sup>®</sup> audio system	
Leather seating surfaces, leather-wrapped instrument cluster	4.2" TFT LCD instrument cluster display (Supervision)	
Adaptive Cruise Control (ACC) <sup>6</sup> with stop-and-go capability	Driver's Integrated Memory System (IMS)	
Autonomous Emergency Braking (AEB) <sup>7</sup>	Aluminum door scuff plates	
Lane Departure Warning System (LDWS) <sup>3</sup>	Rear console air vents	
Electronic Parking Brake (EPB) with vehicle Auto Hold	Rear side window sun shades	
Ventilated front seats	Auto-dimming rearview mirror with integrated HomeLink <sup>®</sup> transceiver and compass	
6-way power-adjustable passenger's seat		
2.0T SPORT ULTIMATE	INCLUDES LIMITED STANDARD EQUIPMENT PLUS:	
Turbocharged 2.0L GDI I4 (245 hp, 260 lb-ft)	Sport-type instrument cluster	
Quad exhaust outlets	18" aluminum alloy wheels	
2.0T Sport appearance package	Aluminum pedals	
Sport-tuned suspension	Heated D-cut steering wheel with paddle shifters	
Sport leather seats with embossed 'Turbo' logo		

	Sonata 2.4	Sonata 2.0T	
ENGINE			
Type	2.4L DOHC 16-valve I4 with Gasoline Direct Injection (GDI) and Dual Continuously Variable Valve Timing (D-CVVT)	Twin-scroll turbocharged and intercooled 2.0L DOHC 16-valve I4 with Gasoline Direct Injection (GDI) and Dual Continuously Variable Valve Timing (D-CVVT)	
Displacement	2,359 cc	1,998 cc	
Materials	Aluminum block and head	Aluminum block and head	
Horsepower	185 @ 6,000 rpm	245 @ 6,000 rpm	
Torque	178 lb-ft @ 4,000 rpm	260 lb-ft @ 1,350-4,000 rpm	
Bore and stroke	88.0 mm x 97.0 mm	86.0 mm x 86.0 mm	
Compression ratio	11.3:1	10.0:1	
Induction system	2-stage Variable Induction System (VIS)	2-stage Variable Induction System (VIS)	
Fuel system	Gasoline Direct Injection (GDI)	Gasoline Direct Injection (GDI)	
Recommended fuel	Unleaded / Regular	Unleaded / Regular	
TRANSMISSION			
Type	6-speed automatic with overdrive lock-up torque converter and SHIFTRONIC <sup>®</sup> manual mode		
BRAKING			
Front	305 mm ventilated rotors, 1-piston calipers	320 mm ventilated rotors, 1-piston calipers	
Rear	284 mm solid rotors, 1-piston calipers	284 mm solid rotors, 1-piston calipers	
STEERING			
Type	Rack-and-pinion	Rack and dual pinion	
Assistance	Enhanced Column-mounted Motor Driven Power Steering (C-MDPS)	Rack-mounted Motor Driven Power Steering (R-MDPS)	
Overall ratio	14.3:1		
Turns (lock to lock)	2.78		
Turning circle (curb-to-curb)	10.9 m		
SUSPENSION			
Front	MacPherson strut with coil springs and Dual Flow Dampers (DFD)		
Rear	Multi-link (4) with coil springs and Dual Flow Dampers (DFD)		
Front / Rear stabilizer bar	23.0 mm / 17.0 mm	24.2 mm / 18.0 mm	
BODY / CHASSIS			
Primary materials	Advanced High Strength Steel (AHSS)		
Coefficient of drag (Cd)	0.26	0.27	
VOLUME			
Passenger compartment	3,004 L		
Cargo (Trunk)	462 L		
Total	3,466 L		
WEIGHT			
Curb weight	1,475 kg – 1,572 kg	1,640 kg	
GVMR	2,040 kg	2,100 kg	
CAPACITIES			
Fuel tank	70 L	70 L	
Engine oil	4.8 L	4.8 L	
Engine coolant	2.7 L	2.8 L	
NATURAL RESOURCES CANADA FUEL CONSUMPTION RATINGS <sup>^</sup>			
TRIM LEVEL	2.4 GL, 2.4 GLS	2.4 SPORT TECH, 2.4 LIMITED	2.0T SPORT ULTIMATE
City	9.4 L/100 km	10.0 L/100 km	10.4 L/100 km
Highway	6.5 L/100 km	7.0 L/100 km	7.4 L/100 km
Combined	8.1 L/100 km	8.6 L/100 km	9.1 L/100 km

For more detailed specifications and information, please visit [hyundaicanada.com](http://hyundaicanada.com), or visit your dealer today.



• = Standard - = Not Available ○ = Optional

		2.4 GL	2.4 GLS	2.4 SPORT TECH	2.4 LIMITED	2.0T SPORT ULTIMATE
<b>PERFORMANCE</b>						
Engine	2.4L 4-cylinder engine (185 hp, 178 lb-ft)	•	•	•	•	-
	2.0L turbocharged 4-cylinder engine (245 hp, 260 lb-ft)	-	-	-	-	•
Suspension	Sport 2.0T suspension calibration	-	-	-	-	•
<b>EXTERIOR</b>						
Wheels and tires	16" x 6.5J aluminum alloy wheels with P205/65R16 all-season tires	•	•	-	-	-
	17" x 7.0J aluminum alloy wheels with P215/55R17 all-season tires	-	-	•	-	-
	17" x 6.5J aluminum alloy wheels with P215/55R17 all-season tires	-	-	-	•	-
	18" x 7.5J aluminum alloy wheels with P235/45R18 all-season tires	-	-	-	-	•
	Temporary spare tire	•	•	•	•	•
Exterior lighting	Automatic headlights	•	•	•	•	•
	LED Daytime Running Lights	•	•	•	•	•
	Projector beam halogen headlights	•	•	•	-	-
	LED integrated side mirror turn signal repeaters	-	•	•	•	•
	Front door handle welcome lights	-	•	•	•	•
	LED tail lights	-	-	•	•	•
	Bi-Xenon High Intensity Discharge (HID) headlights with auto-leveling	-	-	-	•	•
	High Beam Assist (HBA); automatically deactivates high beams when traffic is detected ahead	-	-	-	•	•
Outside mirrors	Power-adjustable, heated	•	•	•	•	•
	Blind spot mirror insert (Note: replaced by BSD in all models except GL)	•	-	-	-	-
	Included in driver's Integrated Memory System (IMS)	-	-	-	•	•
Exterior trim	Chrome grille	•	•	-	•	•
	Chrome door handles	-	-	•	•	•
	Dual exhaust outlets	-	-	•	•	-
	Deluxe extended rocker panels with chrome inserts	-	-	•	•	•
	Sport front fascia	-	-	•	-	•
	2.0T Sport appearance package (quad exhaust outlets, rear bumper diffuser)	-	-	-	-	•
Wipers	Speed-sensitive front windshield wipers with 2 speeds and variable intermittent settings	•	•	•	•	•
	Windshield wiper de-icer	-	-	•	•	•
<b>INTERIOR</b>						
Seating	6-way manually-adjustable driver's seat including height adjustment	•	-	-	-	-
	6-way manually-adjustable passenger's seat including height adjustment	•	•	•	-	-
	Heated front seats	•	•	•	•	•
	60/40 split-folding rear bench seat with centre armrest and cupholders	•	•	•	•	•
	8-way power-adjustable driver's seat with lumbar support	-	•	•	•	•
	Heated rear seats	-	•	•	•	•
	Cloth seating surfaces	•	•	-	-	-
	Sport seats with cloth surfaces and leatherette bolsters	-	-	•	-	-
	Leather seating surfaces	-	-	-	•	-
	Sport seats with leather surfaces and embossed 'Turbo' logo	-	-	-	-	•
	6-way power-adjustable passenger seat	-	-	-	•	•
	Ventilated front seats	-	-	-	•	•
	Multimedia	AM/FM/SiriusXM™/CD/MP3 audio system with 6 speakers	•	•	-	-
5.0" colour LCD touch-screen (audio system control)		•	•	-	-	-
iPod®/USB/auxiliary connectivity (mounted in centre console)		•	•	•	•	•
Bluetooth® hands-free phone system		•	•	•	•	•
8.0" high-resolution touch-screen navigation system		-	-	•	•	•
Dimension® AM/FM/SiriusXM™/CD/MP3 audio system with 7 speakers and external amplifier		-	-	•	-	-
Infinity® AM/FM/SiriusXM™/CD/MP3 audio system with 9 speakers and external amplifier (400 watts)	-	-	-	•	•	

		2.4 GL	2.4 GLS	2.4 SPORT TECH	2.4 LIMITED	2.0T SPORT ULTIMATE
<b>INTERIOR (continued)</b>						
Interior trim	Artificial leather door trim inserts	-	-	•	•	•
	Leather-wrapped gauge cluster cowl	-	-	-	•	•
	Deluxe door scuff plates (aluminum)	-	-	-	•	•
	Wood grain inlays	-	-	-	•	-
	3D T.O.M. inlays	-	-	-	-	•
HVAC	Aluminum pedals	-	-	-	-	•
	Air conditioning	•	•	•	•	•
	Dual-zone automatic climate control	-	•	•	•	•
Steering wheel	Rear seat HVAC ducts (mounted in centre console)	-	•	-	-	•
	Heated steering wheel	-	•	•	•	•
Instrumentation	D-cut sport steering wheel with paddle shifters	-	-	-	-	•
	3.5" OLED instrument cluster display	•	•	•	-	-
Convenience	'Supervision' instrument cluster with 4.2" TFT LCD display	-	-	-	•	-
	Sport-type 'Supervision' instrument cluster with 4.2" TFT LCD display	-	-	-	-	•
	Power windows and power door locks	•	•	•	•	•
	Drive Mode Select (DMS) controlling steering, engine and transmission response	•	•	•	•	•
	Rearview camera	•	•	•	•	•
	Cruise control (non-adaptive)	•	•	•	-	-
	Power tilt-and-slide sunroof	-	•	-	-	-
	Proximity keyless entry with push-button and hands-free trunk opening	-	•	•	•	•
Rear parking assistance sensors	-	•	•	•	•	
Safety	Panoramic sunroof (power tilt-and-slide with one-touch operation)	-	-	•	•	•
	Electrochromic auto-dimming rearview mirror with integrated HomeLink® transceiver and compass	-	-	-	•	•
	Rear side window sun shades	-	-	-	•	•
	Driver's Integrated Memory System (IMS) for seat and mirror positions	-	-	-	•	•
	Adaptive Cruise Control (ACC) <sup>3</sup> with stop-and-go capability	-	-	-	•	•
	Electronic Parking Brake (EPB) with vehicle Auto Hold	-	-	-	•	•
	Electronic Stability Control (ESC) with Traction Control System (TCS) <sup>2</sup>	-	-	-	•	•
<b>SAFETY</b>						
Restraint systems	Airbags <sup>1</sup> (7) – driver's knee (1), front impact (2), front seat-mounted side impact (2), front/rear side impact curtains (2)	•	•	•	•	•
	Front and rear outboard seatbelt pre-tensioners and force limiters	•	•	•	•	•
	LATCH lower anchors and upper tether anchors	•	•	•	•	•
	Anti-whiplash front head restraints	•	•	•	•	•
Active safety systems	Vehicle Stability Management (VSM)	•	•	•	•	•
	Electronic Stability Control (ESC) with Traction Control System (TCS) <sup>2</sup>	•	•	•	•	•
	Anti-lock Braking System (ABS) with Electronic Brake-force Distribution (EBD) and Brake Assist (BA)	•	•	•	•	•
	Blind Spot Detection (BSD) <sup>4</sup> with Lane Change Assist (LCA) and Rear Cross-Traffic Alert (RCTA) <sup>5</sup>	-	•	•	•	•
	Autonomous Emergency Braking (AEB) <sup>7</sup>	-	-	-	•	•
Lane Departure Warning System (LDWS) <sup>3</sup>	-	-	-	•	•	
<b>EXTERIOR / INTERIOR DIMENSIONS</b>						
Wheelbase	2,805 mm	Head room (without panoramic sunroof) – front / rear		1,025 mm / 965 mm		
Overall length	4,855 mm	Leg room – front / rear		1,155 mm / 905 mm		
Overall width	1,865 mm	Shoulder room – front / rear		1,470 mm / 1,435 mm		
Overall height	1,475 mm	Hip room – front / rear		1,404 mm / 1,426 mm		
Minimum ground clearance	135 mm					

[hyundaicanada.com/sonata](http://hyundaicanada.com/sonata)

---

<sup>TM</sup>/<sup>®</sup>The Hyundai name, logos, product names, feature names, images and slogans are trademarks owned by Hyundai Auto Canada Corp. Specifications, features, illustrations, accessories, materials and equipment and all other information shown in this brochure are based on the latest information available at the time of publication. Although descriptions are believed to be correct, accuracy cannot be guaranteed. Hyundai Auto Canada Corp. reserves the right to make any changes or modifications at any time, without notice or obligation, including, without limitation, in colour, specifications, features, accessories, materials, equipment and models. Some vehicles are shown with optional equipment. All Hyundai warranties have no deductible. <sup>A</sup>Fuel economy figures are based on manufacturer's testing and are used for comparison purposes only. Actual fuel efficiency may vary based on driving conditions and the addition of certain vehicle accessories. <sup>B</sup>Hyundai's Comprehensive Limited Warranty coverage covers most vehicle components against defects in workmanship under normal use and maintenance conditions. <sup>C</sup>Hyundai's 24-Hour Roadside Assistance Program is a limited service and does not cover certain costs or expenses. Roadside Assistance is not a warranty. <sup>D</sup>The Supplemental Restraint (Airbag) System (SRS) is designed to work with the 3-point seatbelt system. The SRS deploys in certain frontal and/or side-impact conditions where significant injury is likely. The SRS is not a substitute for seatbelts, which must still be worn at all times. Children under the age of 13 should be securely restrained in the rear seat. NEVER place a child-seat in the front seat of a Hyundai vehicle. <sup>E</sup>Electronic Stability Control (ESC) and Traction Control System (TCS) are meant to enhance conscientious driving habits and are not a substitute for safe driving practices. ESC cannot control your vehicle's stability under all driving situations. No system, no matter how advanced, can overcome physics or correct poor driving. Speed, road conditions and driver steering input will affect whether ESC can help prevent loss of control. See Owner's Manual for details. <sup>F</sup>The Lane Departure Warning System operates when vehicle speed exceeds 70 km/h and only when the lane markings are clearly visible on the road and detected by the system. It will not prevent loss of control. See Owner's Manual for more information and limitations. <sup>G</sup>Never rely completely on Blind Spot Detection (BSD) and be sure to use proper lane changing procedures. BSD will not detect every object or vehicle and will not prevent accidents. Always look over your shoulder and use your mirrors to confirm clearance. See Owner's Manual for further details and limitations. <sup>H</sup>Never rely exclusively on the Rear Cross-Traffic Alert. Always look over your shoulder and use your mirrors to confirm rear clearance. There are limitations to the function, detection, range and clarity of the system. The system may not detect every vehicle. This system does not detect stationary objects. Vehicle must be in reverse and has to be traveling at 10 km/h or less. See Owner's Manual for further details and limitations. <sup>I</sup>Adaptive Cruise Control (ACC) with stop/start capability is not a collision avoidance or warning device. ACC is for highway use only, and should not be used in poor weather, heavy or varying traffic, or on winding or slippery roads. Driver remains responsible to slow or stop the vehicle to avoid a collision. See Owner's Manual for further details and limitations. <sup>J</sup>Autonomous Emergency Braking (AEB) is designed to detect vehicles that are directly in front of the Sonata. AEB will not detect all vehicles and objects. AEB may not work on winding or hilly roads, during certain weather conditions such as rain, snow, fog and any other times of limited visibility. AEB initiates full braking at speeds between 8 and 80 km/h. AEB is not a substitute for safe driving. Always check your surroundings when driving. See Owner's Manual for details and limitations. The SiriusXM<sup>TM</sup> name is a trademark of SiriusXM Satellite Radio Inc., iPod<sup>®</sup> is a registered trademark of Apple Inc., Bluetooth<sup>®</sup> word mark and logos are registered trademarks owned by Bluetooth SIG, Inc., and any use of such marks by Hyundai is under license. All other trademarks and trade names are those of their respective owners.

