



HYUNDAI

NEW THINKING.
NEW POSSIBILITIES.™

2015

ELANTRA



NEW THINKING CREATES NEW POSSIBILITIES.

AT HYUNDAI WE WANT YOUR VEHICLE TO BECOME A PART OF YOUR LIFE, NOT SIMPLY A TOOL TO FACILITATE IT. WE LOOK TO DESIGN AND ENGINEER VEHICLES THAT ARE SO MUCH MORE THAN JUST A SOURCE OF TRANSPORTATION, BUT RATHER INNOVATIVE ENVIRONMENTS THAT STEM FROM YOUR NEEDS. TO THIS END, HYUNDAI STRIVES TO UNDERSTAND YOUR EXPECTATIONS AND EXCEED THEM WITH INNOVATIVE AND THOUGHTFUL TECHNOLOGY. THROUGH THIS NEW THINKING, WE WILL CREATE NEW POSSIBILITIES.



A CLASS ABOVE THE REST

Carmakers typically design vehicles by taking aim at the head of the class. At Hyundai, we set our sights higher and aim for a class above the rest. The Elantra enters the compact segment with a number of exceptional features available for 2015, including projection headlights with LED accents, stylish LED taillights and a 2.0L Gasoline Direct Injection (GDI) engine. When you consider everything the 2015 Elantra has to offer, one word comes to mind: Bullseye.

BEAUTY WITH PURPOSE

When you strive to maximize fuel-efficiency and create breathtaking beauty, aerodynamics play a vital role. The sleek and streamlined design of the 2015 Elantra is derived from our fluidic sculpture design principles. Taking cues from nature's contours, every curve is moulded not only for stunning style, but to also help reduce resistance for improved fuel economy. The pursuit for design perfection influences every facet of the Elantra from form and function, to beauty with purpose. The results speak for themselves.





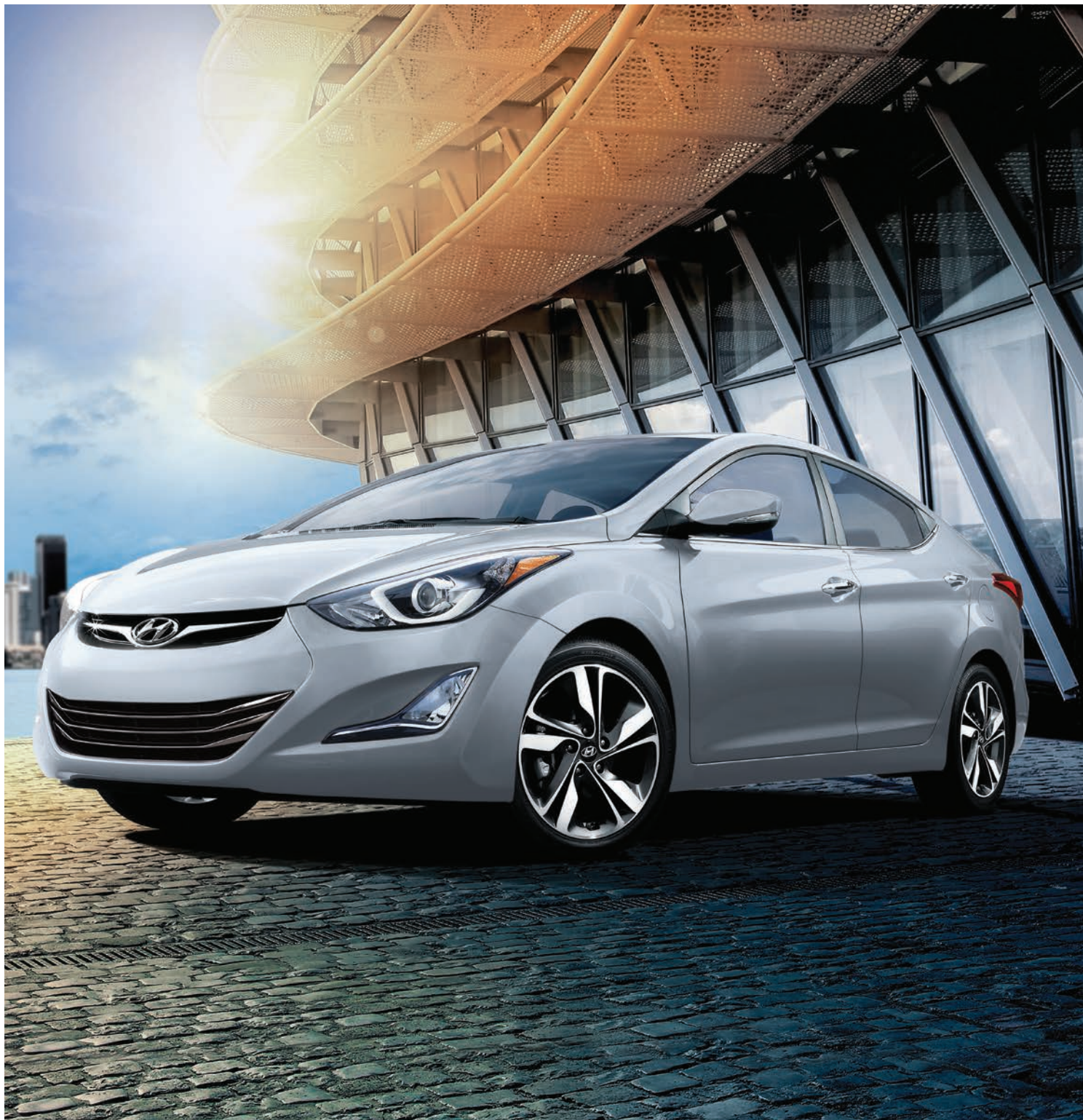
AVAILABLE PROJECTION HEADLIGHTS
WITH LED ACCENTS



AVAILABLE TURN SIGNAL INDICATORS



AVAILABLE LED TAILLIGHTS



DESIGNED WITH YOU IN MIND

Like the breathtaking exterior, Hyundai designers used our acclaimed fluidic design principles as inspiration for the sophisticated interior cabin. Every curve is optimally engineered, every feature intuitively placed. Seamlessly connect to your music with available steering wheel-mounted audio controls or, keep in touch with family and friends throughout your journey with the available Bluetooth® Hands-free phone system. Additional features available to maximize your comfort include front and rear heated seats and a 7" LCD touch-screen navigation system, while the available proximity key and rearview camera provide added convenience. Take a seat in the 2015 Elantra today and see how we've designed it with you in mind.



AVAILABLE STEERING WHEEL-MOUNTED AUDIO/CRUISE/BLUETOOTH® CONTROLS



AVAILABLE 7" LCD TOUCH-SCREEN NAVIGATION SYSTEM WITH REARVIEW CAMERA



AVAILABLE SUNROOF

May not be exactly as shown.

**SOPHISTICATION
MEETS SPORTY
2-DOOR STYLE**

Athletic styling, plenty of space and one engaging drive. The 2015 Elantra Coupe adds an integrated rear spoiler to the sleek, streamlined design, plus standard 16" alloy wheels and a 2.0L GDI engine. For even more sport and tech, there is the SE model with aluminum foot pedals, a sport tuned suspension, and 17" alloys with black inserts. Add it all up and the Elantra Coupe offers the best of the Elantra Sedan, plus sporty 2-door style.

ELANTRA
Coupe



REAR SPOILER



AVAILABLE 17" ALUMINUM ALLOY WHEELS



CHROME TWIN-TIP EXHAUST



AN EFFICIENT PERFORMER

Add innovative engine technology to an already stunning aerodynamic design and you get one fuel efficient vehicle. The Elantra comes equipped with a standard 1.8L engine that offers 148 horsepower and achieves 7.5L/100km combined fuel economy[^] (A/T). If you're looking for more, step up to the available 2.0L GDI engine (standard on Elantra Coupe models), which increases power by 25 horsepower, totaling to an impressive 173 horsepower. Both engines can be matched with an available 6-speed automatic transmission with SHIFTRONIC[®] manual shift mode to enjoy better fuel efficiency with smoother acceleration on the highway.



A NEW STANDARD IN STANDARD SAFETY

An integrated Vehicle Stability Management System, Electronic Stability Control with Traction Control System², six airbags¹ and an Anti-lock Braking System with Brake Assist. When you consider all the safety features that are standard on the 2015 Elantra, you can drive with added confidence. In fact, it is one of the very few in its class to offer standard 4-wheel disc brakes on every model. Here's to new thinking, new possibilities, and new standards.

**STANDARD ELECTRONIC
STABILITY CONTROL**



**STANDARD 4-WHEEL DISC BRAKES
WITH ABS**



STANDARD 6 AIRBAGS¹



ELANTRA FEATURES



WRAPAROUND LED TAILLIGHTS.

The 2015 Elantra is equipped with available stylish, energy-saving LED taillights, for increased visibility day and night.



PROXIMITY KEY WITH PUSH-BUTTON START.

There'll be no more fumbling for the key in your pocket with this available feature. The Elantra sedan recognizes your key fob and, with a push of a button on the door handle, immediately unlocks the door for you. Then you can get in, press the ignition button and go.



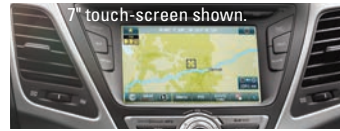
PROJECTION HEADLIGHTS WITH LED ACCENTS.

With available projection headlights, the Elantra emits a strong, focused beam of light that greatly increases night-time visibility. It does so in style with LED accents that frame the upper edges of the headlight.



POWER SUNROOF.

Add a wide open swath of sky to your journey with an available power tilt-and-slide, one-touch glass sunroof.



7" TOUCH-SCREEN NAVIGATION SYSTEM WITH REARVIEW CAMERA.

The 2015 Elantra features an available 7" LCD touch-screen navigation system that not only helps guide you from point A to B, but also acts as a rearview camera when reversing. Also available is the 4.3" LCD touch-screen with rearview camera. Both rearview camera systems also provide guidelines to help let you know how close you are to an object behind you.



STEERING WHEEL-MOUNTED CONTROLS.

Available fingertip control of the sound system, cruise control and Bluetooth® Hands-free phone system is as intuitive as it is enjoyable (standard on Elantra Coupe models). In addition to voice commands, the available Hands-free phone system also supports Bluetooth® audio streaming.



2.0L GDI ENGINE.

The Elantra is available with a 2.0L engine that has been engineered with our innovative Gasoline Direct Injection (GDI) technology for improved efficiency and power (standard on Elantra Coupe models). Automatic transmission models are equipped with our Active ECO System. At the press of a button, the Active ECO System modifies engine and transmission control for smoother and smarter accelerations to help improve fuel economy.



HEATED FRONT AND REAR SEATS.

In addition to the available heated front seats (standard on Elantra Coupe models), the Elantra Sedan GLS and Limited also come equipped with heated rear seats.



DRIVER SELECTABLE STEERING (DSS).

The 2015 Elantra features standard driver selectable steering. DSS provides three driver-selectable operating modes (Comfort, Normal, and Sport) to tailor the vehicle's steering response at any time based on driver preference and road conditions (not available on Elantra Coupe SE model).



THERE'S NO SUBSTITUTE FOR PEACE OF MIND.

The quality of our vehicles is equally matched by the quality of our warranty. Rest assured, we stand proudly and confidently behind our vehicles to give you the ultimate peace of mind with a 5 year/100,000km comprehensive limited warranty, one of the best backed warranties in Canada. We also provide a 5 year/Unlimited km Roadside Assistance Program^{††} featuring flat tire changing, lockout service and more. Just one toll-free call away, 24 hours a day. You're covered with Hyundai.

**5 YEAR
WARRANTY**

100,000 KM
COMPREHENSIVE LIMITED WARRANTY

5-YEAR/100,000 KM
Comprehensive Limited Warranty[†]

5-YEAR/100,000 KM
Powertrain Warranty

5-YEAR/100,000 KM
Emission Warranty

5-YEAR/UNLIMITED KM
Roadside Assistance Program^{††}

ELANTRA COLOURS

ELANTRA

INTERIOR



GREY CLOTH SEATS
(L model only)



BLACK CLOTH SEATS*
(GL and GLS models only)



BLACK LEATHER SEATS
(Limited model only)

EXTERIOR

(L and GL models only)

GLACIER WHITE PEARL



RADIANT SILVER



HARBOUR GREY METALLIC



DESERT BRONZE



INDIGO BLUE PEARL



BLACK NOIR PEARL



VENETIAN RED



EXTERIOR

(GLS and Limited models only)

MONACO WHITE



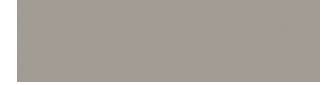
SHIMMERING SILVER



TITANIUM GREY METALLIC



SANDY BRONZE



WINDY SEA BLUE



SPACE BLACK

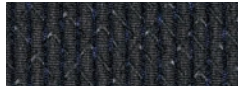


GERANIUM RED



ELANTRA COUPE

INTERIOR



BLACK CLOTH SEATS **A**



GREY CLOTH SEATS **B**



BLACK LEATHER SEATS **C**
(SE model only)

EXTERIOR

MONACO WHITE **BC**



SHIMMERING SILVER **AC**



TITANIUM GREY METALLIC **AC**



SPACE BLACK **BC**



GERANIUM RED **AC**



WINDY SEA BLUE **AC**



Lettering denotes available exterior and interior colour combinations.

Choice of interior colour depends upon model and/or exterior colour selection. Due to print production process, the colours shown throughout this brochure may vary slightly from the actual hue. Visit www.hyundaicanada.com or see your dealer for details. *May not be exactly as shown.

ELANTRA ACCESSORIES

RUBBER FLOOR MATS.

Protect the interior of your Hyundai from everyday dirt and debris with custom-made floor mats. Remove carpet mats prior to installation.



MUD GUARD KIT.

Custom-fit mud guards help keep the dirt and debris of everyday driving where it belongs.



CARGO TRAY.

Add years to the interior of your Hyundai by protecting it from spills and messy loads with a durable, custom-fit cargo tray.



PLASTIC HOOD PROTECTOR.

Helps prevent dents and scratches caused by road and vehicle debris with an attractive plastic hood protector.



BLOCK HEATER.

Engineered for your Hyundai, a block heater will help ensure fast starts and reduce engine wear in extreme weather.



SIDE VISORS.

Compliment your vehicle with a sleek and durable set of side visors that will help reduce glare while providing you with fresh air. Custom made for your vehicle using high quality reinforced tinted acrylic plastic, these visors will look good on your vehicle for years to come.



PREMIUM ALL WEATHER FLOOR LINERS.

Premium all weather floor liners were designed to cover the interior carpet providing maximum protection against the elements that other mats cannot offer. Their unique and durable design features a non-slip surface for added comfort and a long lasting premium look. Remove carpet mats prior to installation.



REAR SPOILER.

Add a touch of style and sportiness to your vehicle with an aerodynamic rear spoiler. It also incorporates a brake light for added visibility and safety. Sedan only.



REAR BUMPER PROTECTOR.

Help protect the finish on your bumper from chips and scratches, when loading and unloading the cargo area, with this durable, custom-fit rear bumper protector.



CARGO NET.

A custom-fit cargo net ensures everything you're transporting remains organized and in place by preventing items from sliding around.

ELANTRA SPECIFICATIONS

L STANDARD EQUIPMENT INCLUDES:	
1.8L DOHC, 16-valve, 4-cylinder, Engine with Dual Continuously Variable Valve Timing (D-CVVT)	Central Power Door Locks
15" Steel Wheels with Covers	Driver Selectable Steering
6-Speed Manual Transmission	Dual Heated Power Exterior Mirrors
4-wheel Disc Brakes	iPod®/USB/Auxiliary Input Jacks
Airbags ¹ (6): Advanced Dual Front, Front Seat-mounted Side-impact and Roof-mounted Side-curtain	Power Windows with Driver's Auto Down
AM/FM/CD/MP3 Audio System with 6 Speakers	Rear Seat Centre Armrest with Cupholders
Anti-lock Braking System (ABS) with Electronic Brake-force Distribution (EBD)	Trip Computer
	Vehicle Stability Management (VSM), Electronic Stability Control (ESC) with Traction Control System (TCS) ²

GL INCLUDES ELANTRA L STANDARD EQUIPMENT PLUS:	
16" Steel Wheels with Covers	Manual Air Conditioning
Automatic Headlights	AM/FM/SiriusXM™/CD/MP3 Audio System with 6 Speakers
Bluetooth® Hands-free Phone System	Steering Wheel-mounted Audio and Cruise Controls
Heated Front Seats	Telescopic Steering Wheel
Keyless Entry System with Alarm	Optional: 6-speed Automatic Transmission with SHIFTRONIC®

GLS INCLUDES ELANTRA GL STANDARD EQUIPMENT PLUS:	
2.0L GDI 4-cylinder Engine	Illuminated Front Sunvisors with Extensions
173 HP	4.3" Touch-screen with Rearview Camera
17" Alloy Wheels	Illuminated Ignition Key Cylinder Surround
Cloth Door Inserts	Leather-wrapped Steering Wheel and Gear Shift Knob
Fog Lights	Power Tilt and Slide Sunroof
Front Windshield Sunshade Band	Optional: 6-speed Automatic Transmission with SHIFTRONIC®
Heated Rear Seats	
Hood Insulator	

LIMITED INCLUDES ELANTRA GLS STANDARD EQUIPMENT PLUS:	
6-speed Automatic Transmission with SHIFTRONIC®	Deluxe Sliding Front Centre Armrest
7" Touch-screen Navigation System with Rearview Camera	Dual-zone Automatic Temperature Control
8-way Power Driver's Seat with Lumbar Support	Leather Seating Surfaces
Auto-dimming Rearview Mirror with HomeLink®	Simulated Leather Door Inserts
AM/FM/SiriusXM™/CD/MP3 Audio System with 6 Speakers and External Amp	Mirror-mounted Turn Signal Indicators
Chrome Beltline Molding	Power Windows with Driver's Auto Up/Down and Pinch Protection
Chrome Exterior Door Handles	Proximity Key with Push-button Start
Chrome Interior Door Handles	Solar Control Glass
Dark Chrome Lower Front Grille	Projection Headlights with LED Accents
Deluxe Door Sill Plates	LED Taillights

	Elantra Sedan 1.8L	Elantra Sedan 2.0L
ENGINE DETAILS		
Type	1.8L (1,797cc) Normally aspirated in-line 4 cylinder	2.0L (1,999cc) Normally aspirated in-line 4 cylinder
Intake System	2-step Variable Induction System + Variable Charge	Motion (VCM)
Block/Head Composition	Aluminum	Aluminum
Horsepower @ RPM	148 @ 6,500	173 @ 6,500
Torque (lb-ft) @ RPM	131 @ 4,700	154 @ 4,700
Bore & Stroke (mm)	81.0 x 87.2	81.0 x 97.0
Compression Ratio (:1)	10.3	11.5
Fuel Delivery	Multi-Point Injection (MPI)	Gasoline Direct Injection (GDI)
Mounts	Hydraulic	Hydraulic
Recommended Fuel	Unleaded	Unleaded
Exhaust	Single	Chrome Tip
Emissions System	ULEV	ULEV

ELECTRICAL	
Ignition System Type	Distributorless
Starter Rating	1.2 KW
Battery Rating	48AH
Alternator Rating	13.5 V 90 A

BRAKING	
Type	Anti-lock Braking System (ABS) with Electronic Brake Force Distribution (EBD)
Front / Rear	280 mm (Disc) / 262 mm (Disc)

STEERING	
Type	Rack and Pinion Motor Driven Power Steering (MDPS)
Overall Ratio (:1)	13.9
Turns (lock to lock)	2.78
Turning Diameter (m)	10.6

SUSPENSION	
Front / Rear	MacPherson Strut with Coil Spring
Front / Rear Stabilizer Bar (mm)	22.0 / 22.0

BODY / CHASSIS	
Type	Unibody
Primary Materials	High Tensile Steel
Drag Coefficient (cd)	0.28

WEIGHTS / CAPACITIES		
Curb Weight MT/AT (kg)	1,258 – 1,315 / 1,278 – 1,335	1,311 – 1,322 / 1,326 – 1,342
Gross Weight MT/AT (kg)	1,740 / 1,760	1,740 / 1,760

VOLUME (L)	
Passenger Compartment	2,707
Cargo (Trunk)	420
Total	3,127

CAPACITIES		
Fuel Tank (L)	48	50

FUEL ECONOMY⁴ (L/100KM) – 5 CYCLE TESTING METHOD		
	MT / AT	MT / AT
City	8.8 / 8.5	9.8 / 9.7
Highway	6.4 / 6.3	7.0 / 6.7
Combined	7.7 / 7.5	8.5 / 8.3

For more detailed specifications and information please visit www.hyundaicanada.com, or visit your dealer today.

• = Standard - = Not Available ◦ = Optional

		L	GL	GLS	LIMITED
ENGINE AND TRANSMISSION					
Engine	1.8L In-line 4-cylinder, 16-valve Engine with D-CVVT	•	•	-	-
	2.0L In-line 4-cylinder, 16-valve Engine with D-CVVT	-	-	•	•
Transmission	6-speed Manual	•	•	•	-
	6-speed Automatic with SHIFTRONIC® Manual Shift Mode	-	◦	◦	•
Drive Configuration	Front Wheel Drive	•	•	•	•
Other	Hood Insulator	-	-	•	•
EXTERIOR					
Wheels	15 x 6.0J Steel	•	-	-	-
	16 x 6.5J Steel	-	•	-	-
	17 x 7.0J Aluminum Alloy	-	-	•	•
Exterior Lighting	Headlights with Escort Function	•	•	•	•
	Automatic Headlights	-	-	•	•
	Fog Lights	-	-	•	•
	Projection Headlights with LED Accents	-	-	-	•
	LED Taillights	-	-	-	•
Outside Mirrors	Power Adjustable, Body Colour, and Heated	•	•	•	•
	Integrated Turn Signal Indicators	-	-	-	•
Moldings and Trim	Front Lower Air Intake, Black	•	•	•	-
	Front Lower Air Intake, Dark Chrome	-	-	-	•
	Window Belt Moulding, Chrome	-	-	-	•
	Door Handles, Body Colour	•	•	•	-
Glass	Door Handles, Chrome	-	-	-	•
	Solar Control Glass	-	-	-	•
	Windshield Sunshade Band	-	-	•	•
Wipers	Sunroof, Power Glass Tilt & Slide, Safety One-touch	-	-	•	•
	Front Windshield, 2-speed with Variable Intermittent	•	•	•	•
INTERIOR					
Seating	Premium Cloth	•	•	•	-
	Leather Seating Surfaces	-	-	-	•
	6-way Adjustable Driver Seat with Adjustable Head Restraint	•	•	•	-
	8-way Power Driver Seat with Lumbar Support	-	-	-	•
	4-way Adjustable Front Passenger Seat with Adjustable Head Restraint	•	•	•	•
	Driver's Seat Height Adjuster (pump device)	•	•	•	-
	Front Heated Seats	-	•	•	•
	Rear Heated Seats (Bottom cushion, outboard seats only)	-	-	•	•
	60/40 Split-folding Rear Seatback with Adjustable Head Restraints (3)	•	•	•	•
	Multimedia	AM/FM/CD/MP3 Audio System with 6 Speakers	•	-	-
AM/FM/SiriusXM™/CD/MP3 Audio System with 6 Speakers		-	•	•	-
AM/FM/SiriusXM™/CD/MP3 Audio System with 6 Speakers and External Amp		-	-	-	•
iPod®/USB/Auxiliary Input Jacks		•	•	•	•
Rearview Camera		-	-	•	•
Bluetooth® Hands-free Phone System with Voice Recognition		-	•	•	•
Interior	7" Touch-screen High-resolution Navigation System	-	-	-	•
	Door Trim, Cloth Inserts	-	-	•	-
	Door Trim, Leatherette Inserts	-	-	-	•
	Door Handles, Chrome	-	-	-	•
	Door Pockets, Map & Bottle Holders – Front & Rear	•	•	•	•
	Sunvisors, Driver & Passenger Vanity Mirror	•	•	•	•
	Sunvisors, Illuminated with Driver & Pass Extensions	-	-	-	•
	Shift Knob, Leather wrapped	-	-	•	•

		L	GL	GLS	LIMITED
INTERIOR (continued)					
HVAC	A/C Pre-wiring	•	•	•	•
	Air Conditioning, Manual Climate Control	-	•	•	-
Steering Wheel	Air Conditioning, Automatic Temperature Control	-	-	-	•
	Cabin Air Filter	•	•	•	•
	Rear Window Defroster Electronic with Timer	•	•	•	•
	Leather Wrapped	-	-	•	•
Convenience Features	Tilt	•	•	•	•
	Telescoping	-	•	•	•
	Audio Controls with Volume, Mode and Seek	-	•	•	•
	Cruise Control and Bluetooth® Controls with Voice Recognition	-	•	•	•
	Power Windows, Front and Rear, with Driver's Auto-down	•	•	•	•
	Power Windows, Driver's Auto-up with Pinch Protection	-	-	-	•
	Power Door Locks	•	•	•	•
	Remote Keyless Entry System with Alarm, Panic & Remote Trunk Release	-	•	•	•
	Front Centre Console with Dual Cupholders (fixed armrest storage box)	•	•	•	-
	Front Centre Console with Dual Cupholders (sliding armrest storage box)	-	-	-	•
SAFETY	Sunglass Holder	•	•	•	•
	Rear Centre Armrest with Cupholders	•	•	•	•
	12-Volt Outlet (2)	•	•	•	•
	Auto-dimming Rearview Mirror with HomeLink®	-	-	-	•
	Proximity Key with Push-button Start	-	-	-	•
	Advanced Front Airbags, Driver and Passenger Side-impact Airbags and Roof-mounted Curtain Airbags¹ (6 Total)	•	•	•	•
EXTERIOR / INTERIOR DIMENSIONS (MM)	Airbag Occupant Classification System (OCS)	•	•	•	•
	LATCH Lower Anchors and Upper Tether Anchors for Children	•	•	•	•
	Power Window Lock-out Button	•	•	•	•
	Child Safety Locks (rear)	•	•	•	•
	Anti-lock Braking System (ABS) with Electronic Brake-force Distribution (EBD)	•	•	•	•
	Brake Assist	•	•	•	•
	Vehicle Stability Management (VSM), Electronic Stability Control System (ESC) with Traction Control System (TCS)²	•	•	•	•
	Wheelbase	2,700	Head Room (Front / Rear)	1,017 / 943	
Overall Length	4,550	Leg Room (Front / Rear)	1,108 / 847		
Overall Width	1,775	Hip Room (Front / Rear)	1,348 / 1,339		
Overall Height	1,430	Shoulder Room (Front / Rear)	1,420 / 1,393		
Minimum Ground Clearance	135				

ELANTRA COUPE SPECIFICATIONS

GL	STANDARD EQUIPMENT INCLUDES:	
2.0L GDI, DOHC, 16-valve, 4-cylinder Engine with Dual Continuously Variable Valve Timing (D-CVVT)	Dual Heated Power Exterior Mirrors	
16" Alloy Wheels	Heated Front Seats	
4-wheel Disc Brakes	Manual Air Conditioning	
Anti-lock Braking System (ABS) with Electronic Brake-force Distribution (EBD)	Power Windows with Driver's Auto Down	
Automatic Headlights	Power Door Locks	
6-speed Manual Transmission	Rear Seat Centre Armrest with Cupholders	
6-way Adjustable Driver's Seat with Height Adjustment	Rear Lip Spoiler	
60/40 Split Fold-down Rear Seats	Steering Wheel-mounted Audio, Cruise and Bluetooth® Controls	
Airbags ¹ (6): Dual Front, Front Seat-mounted Side impact and Roof-mounted Side-curtain	Tilt and Telescopic Steering Wheel	
AM/FM/SiriusXM™/CD/MP3 Audio System with 6 Speakers	Vehicle Stability Management (VSM), Electronic Stability Control (ESC) with Traction Control System (TCS) ²	
iPod®/USB/Auxiliary Input Jacks	Optional: 6-speed Automatic Transmission with SHIFTRONIC®	
Bluetooth® Hands-free Phone System		
Driver Selectable Steering (DSS)		
GLS	INCLUDES ELANTRA COUPE GL STANDARD EQUIPMENT PLUS:	
Cloth Insert Door Trim	LED Taillights	
Driver Safety Window	Rearview Camera	
Deluxe Sliding Centre Armrest	Power Tilt and Slide Sunroof	
Mirror-mounted Turn Signal Indicators	Projection Headlights with LED Accent	
Fog Lights	Solar Glass with Sunshade Band	
4.3" Touch-screen with Rearview Camera	Optional: 6-speed Automatic Transmission with SHIFTRONIC®	
Illuminated Vanity Mirrors with Extensions		
Leather-wrapped Steering Wheel & Gear Shift Knob		
SE	INCLUDES ELANTRA COUPE GLS STANDARD EQUIPMENT PLUS:	
6-speed Automatic Transmission with SHIFTRONIC®	Dual-zone Automatic Temperature Control	
17" Alloy Wheels	Leather Seating Surfaces	
7" Touch-screen Navigation System with Rearview Camera	Simulated Leather Door Inserts	
Alloy Pedals	Power Windows with Driver's Auto Up/Down and Pinch Protection	
AM/FM/SiriusXM™/CD/MP3 Audio System with 6 Speakers and External Amp	Proximity Key with Push-button Start	
Auto-dimming Rearview Mirror with HomeLink®	Sport-tuned Suspension	
DSS not available on SE model.		

Elantra Coupe 2.0L

ENGINE DETAILS	
Type	2.0L (1,999cc) Normally aspirated in-line 4 cylinder
Intake System	2-step Variable Induction System + Variable Charge Motion (VCM)
Block/Head Composition	Aluminum
Horsepower @ RPM	173 @ 6,500
Torque (lb-ft) @ RPM	154 @ 4,700
Bore & Stroke (mm)	81.0 x 97.0
Compression ratio (:1)	11.5
Fuel Delivery	Gasoline Direct Injection (GDI)
Mounts	Hydraulic
Recommended Fuel	Unleaded
Exhaust	Twin-tip
Emissions System	ULEV
ELECTRICAL	
Ignition System Type	Distributorless
Starter Rating	1.2 KW
Battery Rating	48AH
Alternator Rating	13.5 V 90 A
BRAKING	
Type	Anti-lock Braking System (ABS) with Electronic Brake Force Distribution (EBD)
Front / Rear	280 mm (Disc) / 262 mm (Disc)
STEERING	
Type	Rack and Pinion Motor Driven Power Steering (MDPS)
Overall Ratio (:1)	13.9
Turns (lock to lock)	2.78
Turning Diameter (m)	10.6
SUSPENSION	
Front / Rear	MacPherson Strut with Coil Spring
Front / Rear Stabilizer Bar (mm)	22.0 / 22.0
BODY / CHASSIS	
Type	Unibody
Primary Materials	High Tensile Steel
Drag Coefficient (cd)	0.28
WEIGHTS / CAPACITIES	
Curb Weight MT/AT (kg)	1,270 – 1,308 / 1,293 – 1,331
Gross Weight MT/AT (kg)	1,740 / 1,760
VOLUME (L)	
Passenger Compartment	2,707
Cargo (Trunk)	420
Total	3,127
CAPACITIES	
Fuel Tank (L)	50
FUEL ECONOMY [^] (L/100KM) – 5 CYCLE TESTING METHOD	
	MT / AT
City	9.7 / 9.6
Highway	6.7 / 6.8
Combined	8.3 / 8.3

For more detailed specifications and information please visit www.hyundaicanada.com, or visit your dealer today.

• = Standard - = Not Available ◦ = Optional

		GL	GLS	SE
ENGINE AND TRANSMISSION				
Engine	2.0L 4-cylinder, 16-valve Engine with D-CVVT	•	•	•
	Twin Tip Exhaust	•	•	•
Transmission	6-speed Manual	•	•	-
	6-speed Automatic with SHIFTRONIC Manual Shift Mode	◦	◦	•
Drive Configuration	Front Wheel Drive	•	•	•
Other	Hood Insulator	•	•	•
EXTERIOR				
Wheels	16 x 6.5J Aluminum Alloy	•	•	-
	17 x 6.5J Aluminum Alloy	-	-	•
Exterior Lighting	Headlights with Escort Function	•	•	•
	Automatic Headlights	•	•	•
	Fog Lights	-	•	•
	Projection Headlights with LED Accents	-	•	•
	LED Taillights	-	•	•
Outside Mirrors	Power Adjustable, Body Colour, Heated	•	•	•
	Integrated Turn Signal Indicators	-	•	•
Moldings and Trim	Window Belt Moulding, Black	•	•	•
	Door Handles, Body Colour	•	•	•
	Rear Lip Spoiler	•	•	•
Glass	Solar Glass	-	•	•
	Windshield Sunshade Band	-	•	•
	Sunroof, Power Glass Tilt & Slide, Safety One-touch	-	•	•
Wipers	Front Windshield, 2-speed with Variable Intermittent	•	•	•
INTERIOR				
Seating	Premium Cloth	•	•	-
	Leather Seating Surfaces	-	-	•
	6-way Adjustable Driver Seat with Active Head Restraint	•	•	•
	4-way Adjustable Front Passenger Seat with Adjustable Head Restraint	•	•	•
	Driver's Seat Height Adjuster (pump device)	•	•	•
	Front Heated Seats	•	•	•
	60/40 Split-folding Rear Seatback with Adjustable Head Restraints (3)	•	•	•
	Multimedia	AM/FM/SiriusXM™/CD/MP3 Audio System with 6 Speakers	•	•
	AM/FM/SiriusXM™/CD/MP3 Audio System with 6 Speakers and External Amp	-	-	•
	iPod®/USB/Auxiliary Input Jacks	•	•	•
	Rearview Camera	-	•	•
	7" Touch-screen High-resolution Navigation System	-	-	•
	Bluetooth® Hands-free Phone System with Voice Recognition	•	•	•
Interior	Door Trim, Cloth Inserts	-	•	-
	Door Trim, Leatherette Inserts	-	-	•
	Door Pockets, Map & Bottle Holders (front only)	•	•	•
	Sunvisors, Driver & Passenger Vanity Mirror	•	•	•
	Sunvisors, Illuminated with Driver & Passenger Extensions	-	•	•
	Shift Knob, Leather Wrapped	-	•	•
	Door Scuff, Deluxe Door Sill Plates	•	•	•

		GL	GLS	SE
INTERIOR (continued)				
HVAC	Air Conditioning, Manual Climate Control	•	•	-
	Air Conditioning, Automatic Temperature Control	-	-	•
	Cabin Air Filter	•	•	•
	Rear Window Defroster Electronic with Timer	•	•	•
Steering Wheel	Leather Wrapped	-	•	•
	Tilt and Telescoping	•	•	•
	Audio Controls with Volume, Mode and Seek	•	•	•
	Cruise Control	•	•	•
	Bluetooth® Controls with Voice Recognition	•	•	•
Convenience Features	Power Windows, Front with Driver's Auto-down	•	•	•
	Power Windows, Driver's Auto-up with Pinch Protection	-	-	•
	Power Door Locks	•	•	•
	Remote Keyless Entry System with Alarm, Panic & Remote Trunk Release	•	•	•
	Front Centre Console with Dual Cupholders (fixed armrest storage box)	•	-	-
	Front Centre Console with Dual Cupholders (sliding armrest storage box)	-	•	•
	Sunglass Holder	•	•	•
	Rear Centre Armrest with Cupholders	•	•	•
	12-Volt Outlet (2)	•	•	•
	Auto-dimming Rearview Mirror with HomeLink®	-	-	•
Proximity Key with Push-button Start	-	-	•	
SAFETY				
	Advanced Front Airbags, Driver and Passenger Side-impact Airbags and Roof-mounted Curtain Airbags ¹ (6 Total)	•	•	•
	Airbag Occupant Classification System (OCS)	•	•	•
	LATCH Lower Anchors and Upper Tether Anchors for Children	•	•	•
	Anti-lock Braking System (ABS) with Electronic Brake-force Distribution (EBD)	•	•	•
	Brake Assist	•	•	•
	Vehicle Stability Management (VSM), Electronic Stability Control System (ESC) with Traction Control System (TCS) ²	•	•	•
	Anti-theft System Integrated with Remote Keyless Entry and Panic Alarm	•	•	•
EXTERIOR / INTERIOR DIMENSIONS (MM)				
Wheelbase	2,700	Head Room (Front / Rear)	1,012 / 943	
Overall Length	4,540	Leg Room (Front / Rear)	1,108 / 847	
Overall Width	1,775	Hip Room (Front / Rear)	1,340 / 1,348	
Overall Height	1,430	Shoulder Room (Front / Rear)	1,419 / 1,384	
Minimum Ground Clearance	135			



hyundaicanada.com/Elantra
hyundaicanada.com/Elantra-coupe

TM/[®]The Hyundai name, logos, product names, feature names, images and slogans are trademarks owned by Hyundai Auto Canada Corp. Specifications, features, illustrations, accessories, materials and equipment and all other information shown in this brochure are based on the latest information available at the time of publication. Although descriptions are believed to be correct, accuracy cannot be guaranteed. Hyundai Auto Canada Corp. reserves the right to make any changes or modifications at any time, without notice or obligation, including, without limitation, in colour, specifications, features, accessories, materials, equipment and models. Some vehicles are shown with optional equipment. All Hyundai warranties have no deductible. ¹Hyundai's Comprehensive Limited Warranty coverage covers most vehicle components against defects in workmanship under normal use and maintenance conditions. ²Hyundai's 24-Hour Roadside Assistance Program is a limited service and does not cover certain costs or expenses. Roadside Assistance is not a warranty. ³Fuel economy figures are based on manufacturer's testing and are used for comparison purposes only. Actual fuel efficiency may vary based on driving conditions and the addition of certain vehicle accessories. ⁴The Supplemental Restraint (Airbag) System (SRS) is designed to work with the 3-point seatbelt system. The SRS deploys in certain frontal and/or side-impact conditions where significant injury is likely. The SRS is not a substitute for seatbelts, which must still be worn at all times. Children under the age of 13 should be securely restrained in the rear seat. NEVER place a child-seat in the front seat of a Hyundai vehicle. ⁵Electronic Stability Control (ESC) and Traction Control System (TCS) are meant to enhance conscientious driving habits and are not a substitute for safe driving practices. ESC cannot control your vehicle's stability under all driving situations. No system, no matter how advanced, can overcome physics or correct poor driving. Speed, road conditions and driver steering input will affect whether ESC can help prevent loss of control. See Owner's Manual for details. The SiriusXMTM name is a trademark of SiriusXM Satellite radio Inc., Bluetooth[®] word mark and logos are registered trademarks owned by Bluetooth SIG, Inc., iPod[®] is a registered trademark of Apple Inc., HomeLink[®] is a registered trademark of Johnson Controls Inc. All other trademarks and trade names are those of their respective owners.



facebook.com/hyundaicanada
youtube.com/hyundaicanada
instagram.com/hyundaicanada
twitter.com/hyundaicanada