



**HYUNDAI**

NEW THINKING.  
NEW POSSIBILITIES.™

*THE ALL-NEW 2015*

**SONATA**



**NEW THINKING  
CREATES NEW  
POSSIBILITIES.**

**AT HYUNDAI WE WANT YOUR VEHICLE TO BECOME A PART OF YOUR LIFE, NOT SIMPLY A TOOL TO FACILITATE IT. WE LOOK TO DESIGN AND ENGINEER VEHICLES THAT ARE SO MUCH MORE THAN JUST A SOURCE OF TRANSPORTATION, BUT RATHER INNOVATIVE ENVIRONMENTS THAT STEM FROM YOUR NEEDS. TO THIS END, HYUNDAI STRIVES TO UNDERSTAND YOUR EXPECTATIONS AND EXCEED THEM WITH INNOVATIVE AND THOUGHTFUL TECHNOLOGY. THROUGH THIS NEW THINKING, WE WILL CREATE NEW POSSIBILITIES.**



Sport 2.0T Ultimate model shown.

## ***REDEFINING THE SEDAN***

Evolved over seven generations of progress, the all-new Sonata will once again redefine the mid-sized sedan segment. The innovative design makes a bold statement of confidence and refinement, while the intuitively redesigned cabin is equipped with more available technology and safety features throughout the lineup than ever before. Simply put, the all-new Sonata is the answer to the question, "What will Hyundai think of next?"



# *THE EVOLUTION OF SOPHISTICATION*

Engineered with dynamic proportions in perfect balance, the all-new 2015 Sonata has been redesigned with a highly sophisticated profile. Fluidic Sculpture 2.0, the evolution of the Hyundai design language, takes classic proportions and infuses them with modern lines to evoke emotion and captivate attention. The distinctive lines of the Sonata melt into a commanding hexagonal front grille, framed by swept back headlights and LED daytime running lights.



2.4L Limited model shown.





**STANDARD LED DAYTIME RUNNING LIGHTS  
AND AVAILABLE HID HEADLIGHTS**



**AVAILABLE LED TAILLIGHTS**



**AVAILABLE QUAD EXHAUST OUTLETS**



*Sport 2.0T Ultimate model shown.*

## **SOPHISTICATION MEETS ATHLETIC EDGE**

The 2015 Sonata features unique Sport models with more aggressive design elements, including a unique front grille and side rocker panels with chrome moulding. You also have the choice between standard 17" alloy wheels and dual exhaust outlets (Sport and Sport Tech models) or 18" alloy wheels and quad exhaust outlets (Sport 2.0T and Sport 2.0T Ultimate models).



# DRIVER CENTRIC DESIGN

Human Machine Interface (HMI) is our new interior design principle which aims to apply our knowledge in ergonomics to deliver a driver-oriented cabin intuitively laid out for comfort and convenience. Consider the re-envisioned T-shaped centre-stack layout that is slightly angled towards the driver for improved visibility, the available navigation display screen that has been moved up to help you keep your eyes on the road, or the steering wheel-mounted controls that are grouped by function for simpler interaction. In addition to these refinements to make the most natural environment, we have equipped the all-new Sonata with standard features like a 5" colour touch-screen with rear-view camera as well as a Bluetooth® hands-free phone system to provide added ease to your daily routine.

AVAILABLE LEATHER SEATING SURFACES WITH CONTRAST STITCHING



AVAILABLE 8" LCD TOUCH-SCREEN NAVIGATION SYSTEM WITH REAR-VIEW CAMERA



AVAILABLE D-CUT STEERING WHEEL



Sport 2.0T Ultimate model shown.  
May not be exactly as shown.



## *DRIVING DYNAMICS IN HARMONY*

The 2015 Sonata was tested and fine-tuned at Germany's extremely demanding Nürburgring racing circuit. The challenging process crafted a confident vehicle with improved handling performance and ride comfort. New front suspension geometry and a redesigned rear suspension provide enhanced steering response, handling capability and stability. Underpinning the 2015 Sonata is an all-new chassis comprised of more Advanced High Strength Steel for improved rigidity and interior soundproofing.



Sport 2.0T Ultimate model shown.





**ADVANCED HIGH STRENGTH STEEL**



**AVAILABLE 245 HP 2.0L  
TURBOCHARGED GDI ENGINE**



**185 HP 2.4L GDI ENGINE**



*Sport 2.0T Ultimate model shown.*



# AWARD WINNING SAFETY

Named a 2014 Top Safety Pick+ by the Insurance Institute for Highway Safety (IIHS), the all-new Sonata was engineered with your safety as a top priority. Our development team began by strengthening the vehicle body by increasing the use of Advanced High Strength Steel, providing improved driving dynamics and enhanced cabin occupant protection. Seven airbags<sup>1</sup> are standard to provide improved protection in the event of a collision and an array of available driver assistance and situational awareness technologies work to provide visual and audible cues to inform you of potential driving dangers.



Sport 2.0T Ultimate model shown.



WHEN EQUIPPED WITH  
FORWARD COLLISION WARNING.  
For more information visit [www.iihs.org](http://www.iihs.org)





#### **Blind Spot Detection<sup>5</sup> and Rear Cross-Traffic Alert<sup>6</sup>**

Blind Spot Detection uses radar to detect when a vehicle is in the driver's blind spot and provides both an audible and a visual alert to help keep you aware as you move down the road. When reverse gear is selected, Rear Cross-Traffic Alert helps identify and warn the driver of vehicles approaching from the side, even before they come into view of the standard rear-view camera.



#### **Lane Departure Warning System<sup>4</sup>**

Drift outside your lane without signaling and this available system is designed to inform you with audible and visual cues.



#### **Standard Rear-view Camera**

Whether you are pulling out from a narrow driveway or parking parallel in-between two cars, the standard rear-view camera will help guide you. (8" touch-screen shown).



#### **Forward Collision Warning<sup>8</sup>**

Using a forward-sensing camera, the available Forward Collision Warning system monitors closing speed to the vehicle ahead to warn the driver of a potential collision. If a potential collision is detected, an auditory alarm alerts you immediately.



#### **7 Standard Airbags<sup>1</sup>**

The 2015 Sonata features seven standard airbags, including a driver's knee airbag for added protection.



#### **High Beam Assist**

With the available high beam assist system, a front camera continuously monitors traffic situations to automatically turn high beams on or off.



# SONATA FEATURES



## SMART TRUNK.

This available feature makes loading and unloading your Sonata more convenient. The hands-free smart trunk unlocks automatically when it senses that the proximity key is within three feet of the vehicle for more than three seconds.



## ADAPTIVE CRUISE CONTROL<sup>1</sup>

An available Adaptive Cruise Control (ACC) system with stop-and-go capability carefully adjusts your pre-set speed and distance from the vehicle ahead. It will even come to a full stop, then start again, without driver input when the vehicle has been stopped for less than three seconds.



## PANORAMIC SUNROOF.

Enjoy the sun, the moon and the stars through the available panoramic sunroof that spans above both front and rear passengers.



## 8" TOUCH-SCREEN NAVIGATION SYSTEM.

The available navigation system makes it easier for you to get from point A to point B. Use the voice-recognition or the interactive 8" touch-screen to get directions.



## DRIVER'S INTEGRATED MEMORY SYSTEM.

The 2015 Sonata features an available integrated memory seat system that allows you to switch between two profiles at the touch of a button. It not only adjusts automatically to the driver's seat preference, but corresponding exterior mirror positions as well.



## SPORT INTERIOR STYLING.

The aggressive styling of the Sport models extends into the cabin. Sport design cues include available leather sport bolster seats with contrast stitching, an available D-cut steering wheel with mounted paddle shifters, and a more aggressive supervision gauge cluster arrangement (Sport 2.0T and Sport 2.0T Ultimate models only).



## HEATED STEERING WHEEL.

In addition to standard steering wheel-mounted audio, cruise, and Bluetooth® controls, the 2015 Sonata features an available leather-wrapped heated steering wheel for added comfort and warmth.



## HEATED AND VENTILATED FRONT SEATS.

Standard heated front seats and available heated rear seats provide added warmth in the winter, while available ventilated front seats give you added comfort on hot summer days.



## STANDARD ALLOY WHEELS.

The height of premium style, from the ground up. Stunning 16" alloy wheels round out the distinctive, sleek presence of the 2015 Sonata. If your heart desires, go bigger with available 17" or 18" alloy wheels (18" alloy wheels shown).



## THERE'S NO SUBSTITUTE FOR PEACE OF MIND.

The quality of our vehicles is equally matched by the quality of our warranty. Rest assured, we stand proudly and confidently behind our vehicles to give you the ultimate peace of mind with a 5 year/100,000km comprehensive limited warranty, one of the best backed warranties in Canada. We also provide a 5 year/Unlimited km Roadside Assistance Program<sup>††</sup> featuring flat tire changing, lockout service and more. Just one toll-free call away, 24 hours a day. You're covered with Hyundai.

**5 YEAR  
WARRANTY**

**100,000 KM**  
COMPREHENSIVE LIMITED WARRANTY<sup>††</sup>

**5-YEAR/100,000 KM**  
Comprehensive Limited Warranty<sup>†</sup>

**5-YEAR/100,000 KM**  
Powertrain Warranty

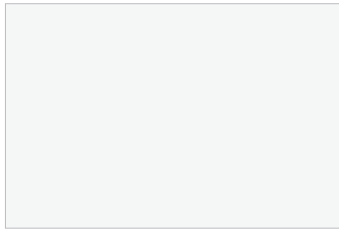
**5-YEAR/100,000 KM**  
Emission Warranty

**5-YEAR/UNLIMITED KM**  
Roadside Assistance Program<sup>††</sup>



# SONATA COLOURS

## EXTERIOR



ICE WHITE

ABCDEF



BLACK NOIR PEARL

ABCDEF



POLISHED METAL

ABCDEF



PLATINUM SILVER

ABCDEF



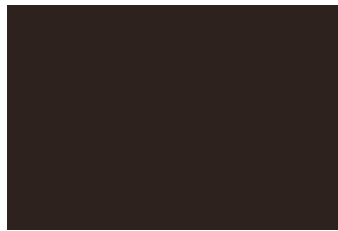
COAST BLUE

ABDE



VENETIAN RED

ABDE



DARK HORSE

ABD

Available on 2.4L models only.

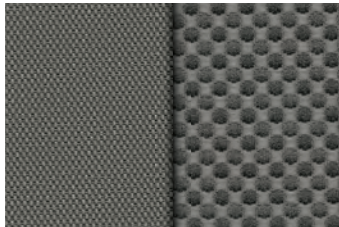


PHOENIX ORANGE

F

Available on Sport 2.0T Ultimate model only.

## INTERIOR



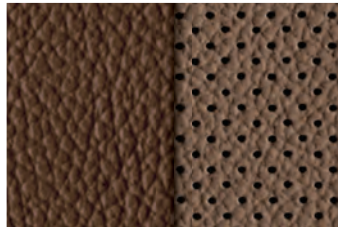
GREY CLOTH

A



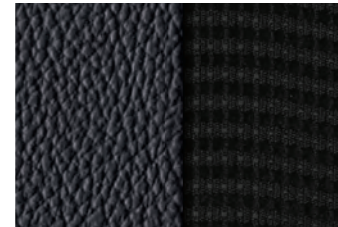
BLACK LEATHER

B



BROWN LEATHER

C



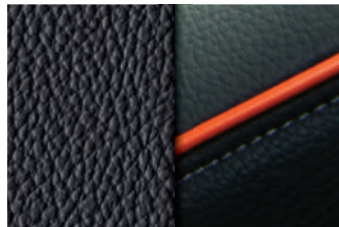
BLACK LEATHER/CLOTH\*

D



BLACK LEATHER WITH BLACK PIPING

E



BLACK LEATHER WITH ORANGE PIPING

F

Lettering denotes available colour combinations. Choice of interior colour depends upon exterior colour and/or model selection. Due to print production process, the colours shown throughout this brochure may vary slightly from the actual hue. See your dealer for model applications. Visit [hyundaicanada.com](http://hyundaicanada.com) or see your dealer for details. \*Not exactly as shown.



# SONATA ACCESSORIES

## REAR BUMPER PROTECTOR.

Help protect the finish on your bumper from chips and scratches, when loading and unloading the cargo area, with this durable, custom-fit rear bumper protector.



## MUD GUARD KIT.

Custom-fit mud guards help keep the dirt and debris of everyday driving where it belongs.



## PLASTIC HOOD PROTECTOR.

Help prevent dents and scratches caused by road and vehicle debris with an attractive plastic hood protector.



## CARGO NET.

A custom-fit cargo net ensures everything you're transporting remains organized and in place by preventing items from sliding around.



## BLOCK HEATER.

Engineered for your Hyundai, a block heater will help ensure fast starts and reduce engine wear in extreme weather.



## PREMIUM ALL WEATHER FLOOR LINERS.

Premium all weather floor liners were designed to cover the interior carpet providing maximum protection against the elements that other mats cannot offer. Their unique and durable design features a non-slip surface for added comfort and a long lasting premium look. Remove carpet mats prior to installation.



## ACCESSORY FRAME.

An accessory frame makes it quick and easy to attach hitch-mounted cargo equipment, such as bikes and ski racks. End cap included. Frame not intended for towing.



## PREMIUM ALL WEATHER CARGO TRAY.

Protect your interior cargo area with style. This durable, custom-fit premium cargo tray protects from spills and messy loads while helping keep your cargo area looking new for years to come.



## SIDE VISORS.

Compliment your vehicle with a sleek and durable set of side visors that will help reduce glare while providing you with fresh air. Custom made for your vehicle using high quality reinforced tinted acrylic plastic, these visors will look good on your vehicle for years to come.



## HITCH MOUNT BIKE CARRIER (2 BIKES).

Hold Fast Cradles cushion bikes and provide maximum bike security. Anti-sway cages prevent bike-to-bike and bike-to-vehicle contact. An improved hitch swing folds arms down when not in use and tilts carrier away from vehicle for trunk, hatch or tailgate access. Increased mast height for improved ground clearance. Carrier may not fit all bicycle applications. Maximum carrying capacity of 32 kg/70 lbs. (Vehicle may not be exactly as shown).



# SONATA SPECIFICATIONS

GL	STANDARD EQUIPMENT INCLUDES:	
2.4L DOHC I4 with Gasoline Direct Injection (GDI) and Dual Continuously Variable Valve Timing (D-CVVT)	Rear-view camera	
6-speed automatic transmission with SHIFTRONIC® manual mode	Air conditioning	
4-wheel disc brakes	Front heated seats	
Anti-lock Braking System (ABS) with Electronic Brake-force Distribution (EBD) and Brake Assist (BA)	Tilt/telescopic steering column adjustment	
Vehicle Stability Management (VSM), Electronic Stability Control (ESC), Traction Control System (TCS) <sup>2</sup>	Multi-function trip computer	
7 airbags <sup>1</sup> – driver's knee (1), front impact (2), front seat-mounted side impact (2), side impact curtains (2)	Steering wheel-mounted audio and telephone controls	
Active front seat head restraints	Bluetooth® hands-free phone system	
Power windows	iPod®/USB/auxiliary connectivity	
Heated, power-adjustable side mirrors	Cruise control	
Automatic headlights with LED daytime running lights	6-speaker AM/FM/SiriusXM™/CD/MP3 audio system with 5.0" touch-screen display	
	16" alloy wheels with P205/65R16 all-season tires	
	Remote keyless entry and security alarm system	
GLS	INCLUDES GL STANDARD EQUIPMENT PLUS:	
Proximity keyless entry with push-button ignition and security alarm system	Dual-zone automatic climate control	
Heated steering wheel	Rear parking assistance sensors	
Rear heated seats	Blind Spot Detection (BSD) <sup>5</sup> with Rear Cross-Traffic Alert (RCTA) <sup>6</sup> and Lane Change Assist (LCA)	
Leather-wrapped steering wheel and gearshift knob	Rear console air ventilation	
Power-adjustable driver's seat with adjustable lumbar support	Windshield wiper deicer	
	Integrated side mirror LED turn signal repeaters	
LIMITED	INCLUDES GLS STANDARD EQUIPMENT PLUS:	
LED taillights	9-speaker Infinity® AM/FM/SiriusXM™/CD/MP3 audio system with external amplifier	
Leatherette door trim inserts	Adaptive Cruise Control (ACC) <sup>7</sup> with stop-and-go capability and Forward Collision Warning (FCW) <sup>8</sup>	
Panoramic sunroof	Lane Departure Warning System (LDWS) <sup>4</sup>	
17" alloy wheels with P215/55R17 all-season tires	Front ventilated seats	
8.0" touch-screen navigation system	Power-adjustable passenger's seat	
Auto-dimming rear-view mirror with integrated HomeLink® transceiver and compass	Auto-leveling HID headlights	
4.2" TFT LCD colour gauge cluster display	High Beam Assist (HBA)	
Leather seating surfaces	Rear side window sunshades	
Aluminum door scuff plates		

## 2.4 GDI

ENGINE DETAILS	
Type	2.4L DOHC 16-valve I4 with Gasoline Direct Injection (GDI), Dual Continuously Variable Valve Timing (D-CVVT)
Displacement	2,359 cc
Materials	Aluminum block and head
Horsepower	185 @ 6,000 rpm
Torque	178 lb-ft @ 4,000 rpm
Bore and stroke	88.0 mm x 97.0 mm
Compression ratio	11.3:1
Induction system	2-stage Variable Induction System (VIS)
Fuel system	Gasoline Direct Injection (GDI)
Recommended fuel	Unleaded / Regular
ELECTRICAL	
Ignition system	Electronic/Distributorless (Controlled by ECU)
Starter	12V – 1.7kW
Alternator	13.5V – 150A
BRAKING	
Front	305 mm ventilated rotors, 1-piston calipers
Rear	284 mm solid rotors, 1-piston calipers
STEERING	
Type	Rack-and-pinion
Assistance	Enhanced Column-Mounted Motor Driven Power Steering (C-MDPS)
Overall ratio	14.3:1
Turns (lock to lock)	2.78
Turning circle (curb-to-curb)	10.9 m
SUSPENSION	
Front	MacPherson strut with coil springs and Mando Dual Flow Dampers (DFD)
Rear	Multi-link (4) with coil springs and Mando Dual Flow Dampers (DFD)
Front / Rear stabilizer bar	23.0 mm / 17.0 mm
BODY / CHASSIS	
Primary materials	Advanced High Strength Steel (AHSS)
Coefficient of drag (Cd)	0.26
VOLUME	
Passenger compartment	3,004 L
Cargo (Trunk)	462 L
Total	3,466 L
WEIGHT	
Curb weight	1,475 kg – 1,572 kg
GVWR	2,040 kg
CAPACITIES	
Fuel tank	70 L
Engine oil	4.8 L
Engine coolant	2.7 L
Transmission fluid	7.1 L
FUEL ECONOMY (L/100KM) <sup>9</sup> – 5 CYCLE TESTING METHOD	
City	9.8 L/100 km
Highway	6.7 L/100 km
Combined	8.4 L/100 km

For more detailed specifications and information please visit [www.hyundaicanada.com](http://www.hyundaicanada.com), or visit your dealer today.



• = Standard   - = Not Available   ◦ = Optional

		2.4 GL	2.4 GLS	2.4 LIMITED
<b>PERFORMANCE</b>				
Engine	2.4L DOHC 16-valve I4 with Gasoline Direct Injection (GDI) and Dual Continuously Variable Valve Timing (D-CVVT)	•	•	•
Transmission	6-speed electronic automatic with overdrive lock-up torque converter and SHIFTRONIC® manual mode	•	•	•
Drive Configuration	Front-wheel drive (FWD)	•	•	•
<b>EXTERIOR</b>				
Wheels and tires	16" x 6.5J aluminum alloy wheels with P205/65R16 all-season tires	•	•	-
	17" x 7.0J aluminum alloy wheels with P215/55R17 all-season tires	-	-	•
	Temporary spare tire	•	•	•
Exterior lighting	Automatic headlights	•	•	•
	LED daytime running lights	•	•	•
	Projector beam halogen headlights	•	•	-
	LED integrated side mirror turn signal repeaters	-	•	•
	LED taillights	-	-	•
	Door handle welcome lights	-	-	•
	High Intensity Discharge (HID) headlights with auto-leveling	-	-	•
	High Beam Assist (HBA); automatically deactivates high beams when traffic is detected ahead	-	-	•
Outside mirrors	Power-adjustable, Heated	•	•	•
Exterior trim	Body-colour door handles	•	-	-
	Chrome grille	•	•	•
	Chrome door handles	-	•	•
Glass	Solar control tinted glass	•	•	•
Wipers	Speed-sensitive front windshield wipers with 2 speeds and variable intermittent settings	•	•	•
	Windshield wiper deicer	-	•	•
<b>INTERIOR</b>				
Seating	6-way manually-adjustable front seats including height adjustment	•	-	-
	Heated front seats	•	•	•
	60/40 split-folding rear bench seat with centre armrest and cupholders	•	•	•
	Front centre armrest with dual storage compartments	•	•	•
	Cloth seating surfaces	•	•	-
	8-way power-adjustable driver's seat with lumbar support	-	•	•
	Heated rear seats	-	•	•
	Leather seating surfaces	-	-	•
	6-way power-adjustable passenger seat	-	-	•
	Ventilated front seats	-	-	•
Multimedia	AM/FM/SiriusXM™/CD/MP3 audio system with 6 speakers	•	•	-
	5.0" colour LCD touch-screen (audio system control)	•	•	-
	iPod®/USB/auxiliary connectivity (mounted in centre console)	•	•	•
	Bluetooth® hands-free phone system	•	•	•
	SiriusXM™ shark-fin antenna	•	•	•
	8.0" high-resolution touch-screen navigation system	-	-	•
	Infinity® AM/FM/SiriusXM™/CD/MP3 audio system with 9 speakers and external amplifier	-	-	•
Interior trim	Chrome door handles	-	-	•
	Deluxe door scuff plates (aluminum)	-	-	•
	Stitched artificial leather door trim inserts	-	-	•
	Leather-wrapped gauge cluster cowl	-	-	•
HVAC/Defroster	Air conditioning	•	-	-
	Dual-zone automatic climate control	-	•	•
	Rear seat HVAC ducts (mounted in centre console)	-	•	•

		2.4 GL	2.4 GLS	2.4 LIMITED
<b>INTERIOR (continued)</b>				
Steering wheel	Manual tilt and telescopic steering column adjustment	•	•	•
	Audio (Volume, Mode, Seek) and Bluetooth® hands-free telephone controls	•	•	•
	Leather-wrapped steering wheel	-	•	•
	Heated steering wheel	-	•	•
Instrumentation	3.5" OLED instrument cluster display	•	•	-
	Supervision instrument cluster with 4.2" TFT LCD display	-	-	•
Convenience features	Power windows with driver's auto up/down and pinch protection	•	•	•
	Power door locks	•	•	•
	Drive Mode Select (DMS) controlling steering, engine, and transmission response	•	•	•
	Rear-view camera	•	•	•
	Cruise control	•	•	-
	Remote keyless entry system with security alarm	•	-	-
	Proximity keyless entry with push-button ignition	-	•	•
	Proximity-activated hands-free trunk opening	-	•	•
	Rear parking assistance sensors	-	•	•
	Panoramic sunroof (power tilt and slide with one-touch operation)	-	-	•
	Electrochromic auto-dimming rear-view mirror with integrated HomeLink® transceiver and compass	-	-	•
	Rear side window sun shades	-	-	•
	Adaptive Cruise Control (ACC) <sup>7</sup> with stop-and-go capability	-	-	•
	Electronic parking brake	-	-	•
<b>SAFETY</b>				
Restraint systems	Airbags <sup>1</sup> (7) – driver's knee (1), front impact (2), front seat-mounted side impact (2), front/rear side curtains (2)	•	•	•
	Three-point seatbelts	•	•	•
	Front and rear outboard seatbelt pre-tensioners and force limiters	•	•	•
	LATCH lower anchors and upper tether anchors	•	•	•
	Anti-whiplash front head restraints	•	•	•
Active safety systems	Vehicle Stability Management (VSM)	•	•	•
	Electronic Stability Control (ESC) with Traction Control System (TCS) <sup>2</sup>	•	•	•
	Anti-lock Braking System (ABS) with Electronic Brake-force Distribution (EBD) and Brake Assist (BA)	•	•	•
	Blind Spot Detection (BSD) <sup>5</sup> with Rear Cross-Traffic Alert (RCTA) <sup>6</sup> and Lane Change Assist (LCA)	-	•	•
	Forward Collision Warning (FCW) <sup>8</sup>	-	-	•
	Lane Departure Warning System (LDWS) <sup>4</sup>	-	-	•
<b>EXTERIOR / INTERIOR DIMENSIONS</b>				
Wheelbase	2,805 mm	Head room (without panoramic sunroof) (Front / Rear)	1,025 mm / 965 mm	
Overall length	4,855 mm	Leg room (Front / Rear)	1,155 mm / 905 mm	
Overall width	1,865 mm	Hip room (Front / Rear)	1,404 mm / 1,426 mm	
Overall height	1,475 mm	Shoulder room (Front / Rear)	1,470 mm / 1,435 mm	
Front overhang	965 mm			
Rear overhang	1,085 mm			
Minimum ground clearance	135 mm			



# SONATA SPORT SPECIFICATIONS

SPORT	STANDARD EQUIPMENT INCLUDES:
2.4L DOHC I4 with Gasoline Direct Injection (GDI) and Dual Continuously Variable Valve Timing (D-CVVT)	6-speaker AM/FM/SiriusXM™/CD/MP3 audio system with 5.0" touch-screen display
6-speed automatic transmission with SHIFTRONIC® manual mode	Proximity keyless entry with push-button ignition
4-wheel disc brakes	Heated steering wheel
Anti-lock Braking System (ABS) with Electronic Brake-force Distribution (EBD) and Brake Assist (BA)	Rear heated seats
Vehicle Stability Management (VSM), Electronic Stability Control (ESC), Traction Control System (TCS) <sup>2</sup>	Leather-wrapped steering wheel and gearshift knob
7 airbags <sup>1</sup> – driver's knee (1), front impact (2), front seat-mounted side impact (2), side impact curtains (2)	Power-adjustable driver's seat with adjustable lumbar support
Active front seat head restraints	Dual-zone automatic climate control
Power windows	Rear parking assistance sensors
Heated, power-adjustable side mirrors	Blind Spot Detection (BSD) <sup>5</sup> with Rear Cross-Traffic Alert (RCTA) <sup>6</sup> and Lane Change Assist (LCA)
Automatic headlights with LED daytime running lights	Rear console air ventilation
Rear-view camera	Windshield wiper deicer
Air conditioning	Integrated side mirror LED turn signal repeaters
Front heated seats	LED taillights
Tilt/telescopic steering column adjustment	Leatherette door trim inserts
Multi-function trip computer	Sport appearance package including exterior design elements and seats
Steering wheel-mounted audio and telephone controls	Panoramic sunroof
iPod®/USB/auxiliary connectivity	17" alloy wheels with P215/55R17 all-season tires
Cruise control	Dual exhaust outlets with chrome tips

SPORT TECH	INCLUDES SPORT STANDARD EQUIPMENT PLUS:
7-speaker Dimension AM/FM/SiriusXM™/CD/MP3 audio system with external amplifier	Auto-dimming rear-view mirror with integrated HomeLink® transceiver and compass
8.0" touch-screen navigation system	Aluminum door scuff plates
Rear side window sun shades	

SPORT 2.0T	INCLUDES SPORT STANDARD EQUIPMENT PLUS:
2.0L DOHC I4 with twin-scroll turbocharger, GDI, and D-CVVT	Leather-trimmed "Sport" seats with contrast stitching
4.2" TFT LCD colour gauge cluster display	Steering wheel-mounted paddle shifters
18" alloy wheels with P235/45R18 all-season tires	Sport-tuned suspension
Quad exhaust outlets with chrome tips	Excludes: Panoramic sunroof and heated steering wheel
Aluminum pedals	

SPORT 2.0T ULTIMATE	INCLUDES SPORT TECH AND SPORT 2.0T STANDARD EQUIPMENT PLUS:
9-speaker Infinity® AM/FM/SiriusXM™/CD/MP3 audio system with external amplifier	Power-adjustable passenger's seat
Adaptive Cruise Control (ACC) <sup>7</sup> with stop-and-go capability and Forward Collision Warning (FCW) <sup>8</sup>	Auto-leveling HID headlights
Lane Departure Warning System (LDWS) <sup>4</sup>	High Beam Assist (HBA)
Front ventilated seats	Driver's Integrated Memory System (IMS) for seat and mirror positions

	2.4 GDI	2.0T GDI
<b>ENGINE</b>		
Type	2.4L DOHC 16-valve I4 with Gasoline Direct Injection (GDI) and Dual Continuously Variable Valve Timing (D-CVVT)	Twin-scroll turbocharged and intercooled 2.0L DOHC 16-valve I4 with Gasoline Direct Injection (GDI) and Dual Continuously Variable Valve Timing (D-CVVT)
Displacement	2,359 cc	1,998 cc
Materials	Aluminum block and head	Aluminum block and head
Horsepower	185 @ 6,000 rpm	245 @ 6,000 rpm
Torque	178 lb-ft @ 4,000 rpm	260 lb-ft @ 1,350-4,000 rpm
Bore and stroke	88.0 mm x 97.0 mm	86.0 mm x 86.0 mm
Compression ratio	11.3:1	10.0:1
Induction system	2-stage Variable Induction System (VIS)	2-stage Variable Induction System (VIS)
Fuel system	Gasoline Direct Injection (GDI)	Gasoline Direct Injection (GDI)
Recommended fuel	Unleaded / Regular	Unleaded / Regular

<b>ELECTRICAL</b>		
Ignition system	Electronic/Distributorless (Controlled by ECU)	
Starter	12V – 1.7kW	12V – 0.9kW
Alternator	13.5V – 150A	13.5V – 130A

<b>BRAKING</b>		
Front	305 mm ventilated rotors, 1-piston calipers	320 mm ventilated rotors, 1-piston calipers
Rear	284 mm solid rotors, 1-piston calipers	284 mm solid rotors, 1-piston calipers

<b>STEERING</b>		
Type	Rack-and-pinion	Rack and dual pinion
Assistance	Enhanced Column-Mounted Motor Driven Power Steering (C-MDPS)	Rack-mounted Motor Driven Steering (R-MDPS)
Overall ratio		14.3:1
Turns (lock to lock)		2.78
Turning circle (curb-to-curb)		10.9 m

<b>SUSPENSION</b>		
Front	MacPherson strut with coil springs and Mando Dual Flow Dampers (DFD)	
Rear	Multi-link (4) with coil springs and Mando Dual Flow Dampers (DFD)	
Front / Rear stabilizer bar	23.0 mm / 17.0 mm	24.2 mm / 18.0mm

<b>BODY / CHASSIS</b>		
Primary materials	Advanced High Strength Steel (AHSS)	
Coefficient of drag (Cd)	0.26	0.27

<b>VOLUME</b>		
Passenger compartment	3,004 L	
Cargo (Trunk)	462 L	
Total	3,466 L	

<b>WEIGHT</b>		
Curb weight	1,475 kg – 1,572 kg	1,590 kg – 1,640 kg
GVWR	2,040 kg	2,100 kg

<b>CAPACITIES</b>		
Fuel tank	70 L	70 L
Engine oil	4.8 L	4.8 L
Engine coolant	2.7 L	2.8 L
Transmission fluid	7.1 L	7.8 L

<b>FUEL ECONOMY (L/100KM)<sup>9</sup> – 5 CYCLE TESTING METHOD</b>		
City	9.8 L/100 km	10.4 L/100 km
Highway	6.7 L/100 km	7.4 L/100 km
Combined	8.4 L/100 km	9.1 L/100 km

For more detailed specifications and information please visit [www.hyundaicanada.com](http://www.hyundaicanada.com), or visit your dealer today.



• = Standard   - = Not Available   ◦ = Optional

		2.4 SPORT	2.4 SPORT TECH	2.0T	2.0T ULTIMATE
<b>PERFORMANCE</b>					
Engine	2.4L DOHC 16-valve I4 with Gasoline Direct Injection (GDI) and Dual Continuously Variable Valve Timing (D-CVVT)	•	•	-	-
	Twin-scroll turbocharged and intercooled 2.0L DOHC 16-valve I4 with Gasoline Direct Injection (GDI) and Dual Continuously Variable Valve Timing (D-CVVT)	-	-	•	•
Transmission	6-speed electronic automatic with overdrive lock-up torque converter and SHIFTRONIC® manual mode	•	•	•	•
Drive Configuration	Front-wheel drive (FWD)	•	•	•	•
<b>EXTERIOR</b>					
Wheels and tires	17" x 7.0J aluminum alloy wheels with P215/55R17 all-season tires (Sport type)	•	•	-	-
	18" x 7.5J aluminum alloy wheels with P235/45R18 all-season tires (Sport type)	-	-	•	•
	Temporary spare tire	-	•	•	•
	Tire Mobility Kit (TMK)	•	-	-	-
Exterior lighting	Automatic headlights	•	•	•	•
	LED daytime running lights	•	•	•	•
	LED integrated side mirror turn signal repeaters	•	•	•	•
	LED taillights	•	•	•	•
	Door handle welcome lights	•	•	•	•
	Projector beam halogen headlights	•	•	-	-
	High Intensity Discharge (HID) headlights with auto-leveling	-	-	•	•
	High Beam Assist (HBA); automatically deactivates high beams when traffic is detected ahead	-	-	-	•
Outside mirrors	Power-adjustable, Heated	•	•	•	•
Exterior trim	Chrome door handles	•	•	•	•
	Chrome body-side mouldings	•	•	•	•
	Sport appearance package (grille, front fascia, rocker panel extension, rear diffuser)	•	•	•	•
Glass	Solar control tinted glass	•	•	•	•
Wipers	Speed-sensitive front windshield wipers with 2 speeds and variable intermittent settings	•	•	•	•
	Windshield wiper deicer	•	•	•	•
<b>INTERIOR</b>					
Seating	Heated front seats	•	•	•	•
	60/40 split-folding rear bench seat with centre armrest and cupholders	•	•	•	•
	Front centre armrest with dual storage compartments	•	•	•	•
	8-way power-adjustable driver's seat with lumbar support	•	•	•	•
	Heated rear seats	•	•	•	•
	Sport seats with cloth seating surfaces and leather bolsters	•	•	-	-
	Sport seats with leather seating surfaces and "Sport" embroidery	-	-	•	•
	6-way power-adjustable passenger seat with adjustable lumbar support	-	-	-	•
	Ventilated front seats	-	-	-	•
Multimedia	AM/FM/SiriusXM™/CD/MP3 audio system with 6 speakers	•	-	•	-
	5.0" colour LCD touch-screen (audio system control)	•	-	•	-
	iPod®/USB/auxiliary connectivity (mounted in centre console)	•	•	•	•
	Bluetooth® hands-free phone system	•	•	•	•
	SiriusXM™ shark-fin antenna	•	•	•	•
	8.0" high-resolution touch-screen navigation system	-	•	-	•
	Dimension AM/FM/SiriusXM™/CD/MP3 audio system with 7 speakers and external amplifier	-	•	-	-
	Infinity® AM/FM/SiriusXM™/CD/MP3 audio system with 9 speakers and external amplifier	-	-	-	•
Interior trim	Chrome door handles	•	•	•	•

		2.4 SPORT	2.4 SPORT TECH	2.0T	2.0T ULTIMATE
<b>INTERIOR (continued)</b>					
	Deluxe door scuff plates (aluminum)	-	•	•	•
	Aluminum pedals	-	-	•	•
HVAC/Defroster	Dual-zone automatic climate control	•	•	•	•
	Rear seat HVAC ducts (mounted in centre console)	•	•	•	•
Steering wheel	Manual tilt and telescopic steering column adjustment	•	•	•	•
	Audio (Volume, Mode, Seek) and Bluetooth® hands-free telephone controls	•	•	•	•
	Leather-wrapped steering wheel	•	•	-	-
	Heated steering wheel	•	•	-	-
	Leather-wrapped D-cut sport steering wheel with paddle shifters	-	-	•	•
Instrumentation	3.5" OLED instrument cluster display	•	•	-	-
	Sport-type Supervision instrument cluster with 4.2" TFT LCD display	-	-	•	•
Convenience features	Power windows with driver/passenger auto up/down and pinch protection	•	•	•	•
	Power door locks	•	•	•	•
	Drive Mode Select (DMS) controlling steering, engine, and transmission response	•	•	•	•
	Rear-view camera	•	•	•	•
	Proximity keyless entry with push-button ignition	•	•	•	•
	Proximity-activated hands-free trunk opening	•	•	•	•
	Rear parking assistance sensors	•	•	•	•
	Cruise control	•	•	•	-
	Panoramic sunroof (power tilt and slide with one-touch operation)	•	•	-	•
	Electrochromic auto-dimming rear-view mirror with integrated HomeLink® transceiver and compass	-	•	-	•
	Rear side window sun shades	-	•	-	•
	Adaptive Cruise Control (ACC) <sup>7</sup> with stop-and-go capability	-	-	-	•
	Electronic parking brake	-	-	-	•
<b>SAFETY</b>					
Restraint systems	Airbags <sup>1</sup> (7) – driver's knee (1), front impact (2), front seat-mounted side impact (2), front/rear side curtains (2)	•	•	•	•
	Three-point seatbelts	•	•	•	•
	Front and rear outboard seatbelt pre-tensioners and force limiters	•	•	•	•
	LATCH lower anchors and upper tether anchors	•	•	•	•
	Anti-whiplash front head restraints	•	•	•	•
Active safety systems	Vehicle Stability Management (VSM)	•	•	•	•
	Electronic Stability Control (ESC) with Traction Control System (TCS) <sup>2</sup>	•	•	•	•
	Anti-lock Braking System (ABS) with Electronic Brake-force Distribution (EBD) and Brake Assist (BA)	•	•	•	•
	Blind Spot Detection (BSD) <sup>3</sup> with Rear Cross-Traffic Alert (RCTA) <sup>6</sup> and Lane Change Assist (LCA)	•	•	•	•
	Forward Collision Warning (FCW) <sup>8</sup>	-	-	-	•
	Lane Departure Warning System (LDWS) <sup>4</sup>	-	-	-	•
<b>EXTERIOR / INTERIOR DIMENSIONS</b>					
Wheelbase (Front / Rear)	2,805 mm	Head room (without panoramic sunroof)	1,025 mm / 965 mm		
Overall length	4,855 mm	Leg room (Front / Rear)	1,155 mm / 905 mm		
Overall width	1,865 mm	Hip room (Front / Rear)	1,404 mm / 1,426 mm		
Overall height	1,475 mm	Shoulder room (Front / Rear)	1,470 mm / 1,435 mm		
Front overhang	965 mm				
Rear overhang	1,085 mm				
Minimum ground clearance	135 mm				





[hyundaicanada.com/Sonata](http://hyundaicanada.com/Sonata)

<sup>TM&®</sup>The Hyundai name, logos, product names, feature names, images and slogans are trademarks owned by Hyundai Auto Canada Corp. Specifications, features, illustrations, accessories, materials and equipment and all other information shown in this brochure are based on the latest information available at the time of publication. Although descriptions are believed to be correct, accuracy cannot be guaranteed. Hyundai Auto Canada Corp. reserves the right to make any changes or modifications at any time, without notice or obligation, including, without limitation, in colour, specifications, features, accessories, materials, equipment and models. Some vehicles are shown with optional equipment. All Hyundai warranties have no deductible. <sup>A</sup>Fuel economy figures are based on manufacturer's testing and are used for comparison purposes only. Actual fuel efficiency may vary based on driving conditions and the addition of certain vehicle accessories. <sup>†</sup>Hyundai's Comprehensive Limited Warranty coverage covers most vehicle components against defects in workmanship under normal use and maintenance conditions. <sup>††</sup>Hyundai's 24-Hour Roadside Assistance Program is a limited service and does not cover certain costs or expenses. Roadside Assistance is not a warranty. <sup>‡</sup>The Supplemental Restraint (Airbag) System (SRS) is designed to work with the 3-point seatbelt system. The SRS deploys in certain frontal and/or side-impact conditions where significant injury is likely. The SRS is not a substitute for seatbelts, which must still be worn at all times. Children under the age of 13 should be securely restrained in the rear seat. NEVER place a child-seat in the front seat of a Hyundai vehicle. <sup>§</sup>Electronic Stability Control (ESC) and Traction Control System (TCS) are meant to enhance conscientious driving habits and are not a substitute for safe driving practices. ESC cannot control your vehicle's stability under all driving situations. No system, no matter how advanced, can overcome physics or correct poor driving. Speed, road conditions and driver steering input will affect whether ESC can help prevent loss of control. See Owner's Manual for details. <sup>¶</sup>The Lane Departure Warning System operates when vehicle speed exceeds 70 km/h and only when the lane markings are clearly visible on the road and detected by the system. It will not prevent loss of control. See Owner's Manual for more information and limitations. <sup>¶¶</sup>Never rely completely on Blind Spot Detection (BSD) and be sure to use proper lane changing procedures. BSD will not detect every object or vehicle and will not prevent accidents. Always look over your shoulder and use your mirrors to confirm clearance. See Owner's Manual for further details and limitations. <sup>¶¶¶</sup>Never rely exclusively on the Rear Cross-Traffic Alert. Always look over your shoulder and use your mirrors to confirm rear clearance. There are limitations to the function, detection, range and clarity of the system. This system does not detect stationary objects. Vehicle must be in reverse and has to be traveling at 10 km/h or less. See Owner's Manual for further details and limitations. <sup>¶¶¶¶</sup>Adaptive Cruise Control (ACC) with stop/start capability is not a collision avoidance or warning device. ACC is for highway use only and should not be used in poor weather, heavy or varying traffic, or on winding or slippery roads. Driver remains responsible to slow or stop the vehicle to avoid a collision. See Owner's Manual for further details and limitations. <sup>¶¶¶¶¶</sup>The Forward Collision Warning System is intended to be a supplement to safe driving practices. The system is not designed to detect certain stationary objects and may not detect all vehicles under certain conditions. The system does not provide a braking function. The driver is responsible for being attentive and maintaining control of the vehicle, and should not wait for the system's alerts before braking as there may not be sufficient time to brake safely. The system operates when vehicle speed is above 40 km/h and below 145 km/h. See Owner's Manual for further details and limitations. The SiriusXM<sup>™</sup> name is a trademark of SiriusXM Satellite radio Inc. iPod<sup>®</sup> is a registered trademark of Apple Inc. Bluetooth<sup>®</sup> word mark and logos are registered trademarks owned by Bluetooth SIG, Inc., and any use of such marks by Hyundai is under license. All other trademarks and trade names are those of their respective owners.



facebook.com/hyundaicanada  
youtube.com/hyundaicanada  
instagram.com/hyundaicanada  
twitter.com/hyundaicanada