



HYUNDAI

NEW THINKING.
NEW POSSIBILITIES.™

2015 7-PASSENGER

SANTAFÉ XL



**NEW THINKING
CREATES NEW
POSSIBILITIES.**

AT HYUNDAI, WE WANT YOUR VEHICLE TO BECOME A PART OF YOUR LIFE, NOT SIMPLY A TOOL TO FACILITATE IT. WE LOOK TO DESIGN AND ENGINEER VEHICLES THAT ARE SO MUCH MORE THAN JUST A SOURCE OF TRANSPORTATION, BUT RATHER INNOVATIVE ENVIRONMENTS THAT STEM FROM YOUR NEEDS. TO THIS END, HYUNDAI STRIVES TO UNDERSTAND YOUR EXPECTATIONS AND EXCEED THEM WITH INNOVATIVE AND THOUGHTFUL TECHNOLOGY. THROUGH THIS NEW THINKING, WE WILL CREATE NEW POSSIBILITIES.



ROOM FOR 7

The 2015 Santa Fe XL is for the family that wants to ride in comfort. Whether that entails ample storage capacity for your adventures, seating space for seven passengers or premium comfort and convenient amenities – the 2015 Santa Fe XL is a true standout when you want space, style and comfort.

STANDOUT DESIGN

There is no question that the 2015 Santa Fe XL is an impressively large family mover, but space and storage capacity are not the only features that stay top of mind. Embraced by the Hyundai fluidic design principles, the ferocity and strength of nature are the inspirations behind the dynamic bodylines and bold shape of the Santa Fe XL. Featuring sculpted headlights with LED accents, sporty dual chrome exhaust tips and available 19" alloy wheels – you get big, beautiful and powerful.





AVAILABLE HID HEADLIGHTS
WITH STANDARD LED ACCENT



AVAILABLE LED TURN SIGNAL INDICATORS



AVAILABLE 19" ALLOY WHEELS



EXTRA LARGE SPACE

When it comes to space and versatility, this 7-seater aims to please (6-seat configuration available on Luxury and Limited models). The intelligent design allows you to transform the 2015 Santa Fe XL from the ultimate comfort zone to the ultimate cargo hauler. Reclining second row seats split-fold 40/20/40, feature button releases from the cargo area and slides forward for flexible storage options, while third row seats split-fold 50/50 to further enhance cargo utility. This sounds even better with the available Smart Liftgate that makes it that much more convenient to load and unload cargo. And while the 2015 Santa Fe XL adapts to your lifestyle needs, it also enhances your travels with features like standard Bluetooth®, heated front seats, YES Essentials® stain protection for cloth seating and available memory driver's seating – just one more convenient feature you can control at your fingertips.



May not be exactly as shown.



May not be exactly as shown.



POWER AND CONTROL

The 2015 Santa Fe XL is equipped with a strapping 3.3L GDI V6 engine, delivering 290 horsepower and 252 lb-ft of torque with a confident 5,000 lbs. towing capacity. The best part about the performance is how efficient the power is. Mated to a 6-speed automatic transmission with SHIFTRONIC® manual shift mode, with the press of a button you can switch the 2015 Santa Fe XL into Active ECO mode to modify engine and transmission control to help improve fuel efficiency. All models feature standard Driver Selectable Steering (DSS) to allow for customized feel based on driver preference, tailor your steering settings between Sport, Normal and Comfort mode.



SAFETY DRIVEN

The 2015 Santa Fe XL is primed to take on the everyday and even the odd day out. An available Blind Spot Detection³ system helps provide added safety when changing lanes, standard Hill start Assist Control and Downhill Brake Control provide added confidence during steep encounters, and 7-standard airbags¹ stand on guard in the event of a collision.



SANTA FE XL FEATURES



SMART LIFTGATE.

Using proximity key technology, the available Smart Liftgate senses your presence when you stand within three feet of the trunk. With no extra movement or motion, the trunk automatically opens to welcome your two hands worth of cargo, effortlessly.



COMFORT & CONTROL AT HAND.

Take control in comfort and style with an available heated, leather wrapped steering wheel. Also find close at hand all your cruise control, audio system and standard Bluetooth® hands-free mobile phone interface controls mounted right on the steering wheel at your fingertips.



LED TAILLIGHTS.

Available LED taillights not only look great, but also dramatically increase visibility both day and night (available on Limited models).



HEATED AND VENTILATED SEATS.

Adapt to the cold weather with the standard driver and front passenger heated seats. Receiving equal attention, your rear seat passengers will thank you for the luxury of the available heated rear seats. And just in case your journeys take you somewhere warm, the 2015 Santa Fe XL also offers available ventilated front seats.



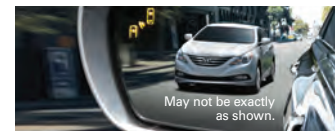
PANORAMIC SUNROOF.

The available panoramic glass sunroof provides exceptional openness and class-defying luxury.



ALL-WHEEL DRIVE (AWD).

The 2015 Santa Fe XL has been engineered with an available, advanced all-wheel drive system which features Active Cornering Control. Managing vehicle acceleration by adjusting the inside rear wheel speed during a turn, Active Cornering Control helps improve vehicle stability and helps to reduce over/under steer in adverse driving conditions.



BLIND SPOT DETECTION³ AND REAR CROSS-TRAFFIC ALERT⁴

The 2015 Santa Fe XL helps reduce stress and improve safety when changing lanes with an available Blind Spot Detection system. Warning indicators on the instrument cluster and side mirrors alert the driver when a vehicle enters defined blind spot areas near the rear of the car. When reverse gear is selected, Rear Cross-Traffic Alert helps identify and warn the driver of vehicles approaching from the side, even before they come into view of the available rear-view camera.



REAR-VIEW CAMERA AND NAVIGATION SYSTEM.

The 2015 Santa Fe XL is equipped with an available 4.3" colour display touch-screen with rear-view camera to help make backing up safer and easier. Step up to the Limited for an 8" touch-screen with rear-view camera and navigation system to help get you from point A to point B with ease (8" touch-screen shown).



HID HEADLIGHTS WITH LED ACCENTS.

The highly detailed design of the standard projection-beam headlights with LED accent not only offer focused illumination for safer night driving, but also a touch of sophisticated style. Available Xenon HID headlights with auto-levelling function offer bright beams of light and self-levelling regardless of load/passenger weight distribution.



THERE'S NO SUBSTITUTE FOR PEACE OF MIND.

The quality of our vehicles is equally matched by the quality of our warranty. Rest assured, we stand proudly and confidently behind our vehicles to give you the ultimate peace of mind with a 5-year/100,000km comprehensive limited warranty, one of the best backed warranties in Canada. We also provide a 5-year/Unlimited km Roadside Assistance Program^{††} featuring flat tire changing, lockout service and more. Just one toll-free call away, 24 hours a day. You're covered with Hyundai.

**5 YEAR
WARRANTY**

100,000 KM
COMPREHENSIVE LIMITED WARRANTY

5-YEAR/100,000 KM
Comprehensive Limited Warranty[†]

5-YEAR/100,000 KM
Powertrain Warranty

5-YEAR/100,000 KM
Emission Warranty

5-YEAR/UNLIMITED KM
Roadside Assistance Program^{††}

SANTA FE XL COLOURS

EXTERIOR



CIRCUIT SILVER ABCD



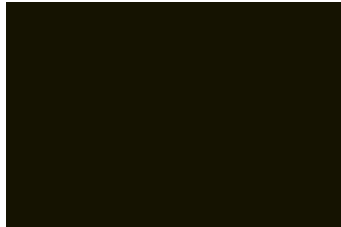
IRON FROST ABC



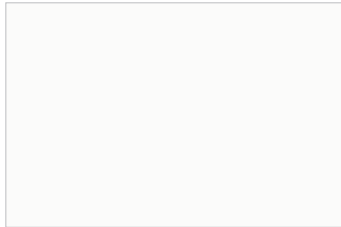
FROSTED MOCHA ABC



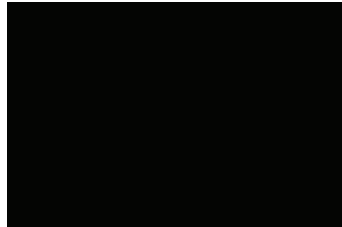
REGAL RED PEARL ABC



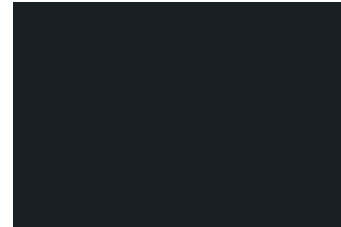
HUNTER GREEN ABC



MONACO WHITE ABCD

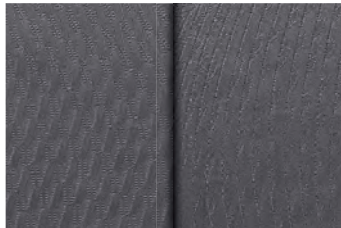


BECKETTS BLACK ABCD

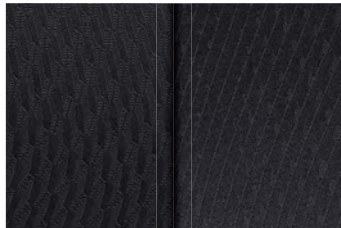


NIGHT SKY PEARL ABC

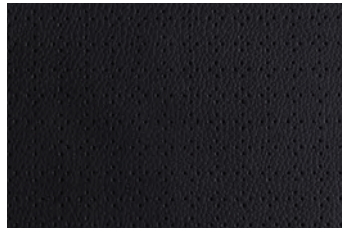
INTERIOR



GREY CLOTH* A
With YES Essentials® stain protectant.
Standard on 3.3L FWD model.



BLACK CLOTH* B
With YES Essentials® stain protectant.
Standard on 3.3L Premium model.



BLACK LEATHER C
Standard on 3.3L Luxury and 3.3L Limited models.



SADDLE LEATHER D
Available on 3.3L Limited 6-passenger models only.

Lettering denotes available exterior and interior colour combinations.

Choice of interior colour depends upon model and/or exterior colour selection. Due to digital production process, the colours shown throughout this brochure may vary slightly from the actual hue. Visit hyundaicanada.com or see your dealer for details. *May not be exactly as shown.

WHEELS



**3.3L FWD, 3.3L Premium
and 3.3L Luxury 18" Wheel**



3.3L Limited 19" Wheel

SANTA FE XL ACCESSORIES

CROSS RAILS.

This durable, quick-locking cross rail system lets you transport cargo easily, without sacrificing interior room.



PREMIUM ALL WEATHER CARGO TRAY.

Protect your interior cargo area with style. This durable, custom-fit premium cargo tray helps protect from spills and messy loads while helping keep your cargo area looking new for years to come.



REAR BUMPER PROTECTOR.

Help protect the finish on your bumper from chips and scratches, when loading and unloading the cargo area, with this durable, custom-fit rear bumper protector.



PLASTIC HOOD PROTECTOR.

Help prevent dents and scratches caused by road and vehicle debris with an attractive plastic hood protector.



CARGO COVER.

Keep your valuables safe and out of sight with an easily removable cargo cover.



HITCH MOUNT BIKE CARRIER (4 BIKES).

Hold fast cradles cushion the bikes and provide maximum bike security. Anti-sway cages prevent bike-to-bike and bike-to-vehicle contact. An improved hitch swing folds arms down when not in use and tilts carrier away from vehicle for trunk, hatch or tailgate access. Increased mast height for improved ground clearance. (Santa Fe Sport model shown).



SIDE VISORS.

Complement your vehicle with a sleek and durable set of side visors that will help reduce glare while providing you with fresh air. Custom made for your vehicle using high quality reinforced tinted acrylic plastic, these visors will look good on your vehicle for years to come.



SIDE STEPS (OVAL TUBES).

These oval side steps were designed to complement the design nature of your Hyundai. They are as attractive as they are functional. Finished in stainless steel, these oval side steps include step pads for secure footing and will look good for years to come.



TRAILER HITCH KIT.

Designed to meet your towing needs, a Hyundai hitch can accommodate a wide variety of hitch-mounted accessories. Kit includes: trailer hitch, ball mount and end cap. Chrome ball shown not included.



PREMIUM ALL WEATHER FLOOR LINERS.

Premium all weather floor liners were designed to cover the interior carpet providing maximum protection against the elements that other mats cannot offer. Their unique and durable design features a non-slip surface for added comfort and a long lasting premium look. Remove carpet mats prior to installation.

SANTA FE XL SPECIFICATIONS

3.3L FWD		STANDARD EQUIPMENT INCLUDES:	
3.3L, 290 hp, V6 GDI Engine with DOHC and D-CVVT		Heated front seats	
18" aluminum alloy wheels		Deluxe cloth seats with YES Essentials® stain protection	
6-speed automatic transmission with SHIFTRONIC®		7-passenger seating	
4-wheel disc brakes		Second row 40/20/40 split fold-flat and recline with height adjustable head restraints	
Active ECO system		Third row 50/50 split bench with fold-forward head restraints	
Air conditioning with manual temperature control and second row vents		Power adjustable, heated exterior mirrors	
AM/FM/SiriusXM™/CD/MP3 audio system with LCD screen and 6-speakers		Driver and front passenger power windows with auto-up/down and pinch protection	
iPod®/USB/Auxiliary input jacks		Roof-rack side rails	
Anti-lock Braking System (ABS) with Electronic Brake-force Distribution (EBD) and Brake Assist (BA)		Remote keyless entry with alarm	
Electronic Stability Control (ESC) with Traction Control System (TCS)²		Steering wheel-mounted audio and cruise controls	
Downhill Brake Control (DBC) and Hill start Assist Control (HAC)		LED positioning lamps	
Front windshield wiper deicer		Fog lights	
Bluetooth® hands-free phone system		Chrome exterior door handles	
Front centre console with fixed armrest, storage box and dual cup holders		Rear spoiler	
Sliding second row seats		2,268 kg (5,000 lbs.) towing capacity	
Driver and front passenger illuminated vanity mirrors		Trailer tow pre-wiring	
Airbags¹ (7): Dual front, front seat-mounted side-impact, roof mounted side-curtain with roll-over sensor and driver knee airbag		Dual chrome exhaust tips	
		Solar glass with rear privacy glass	
		Driver seat 2-way power lumbar support	
3.3L PREMIUM (AWD)		INCLUDES 3.3L FWD STANDARD EQUIPMENT PLUS:	
All-Wheel Drive		Leather-wrapped gear shift knob	
Automatic headlights		Rear side window sunshade blinds	
Dual-zone automatic temperature control with clean air ionizer		Rear parking assist	
12-way power adjustable driver's seat including 4-way power lumbar support		Third row air conditioning controls with vent	
Leather-wrapped, heated steering wheel		115-Volt cargo area power outlet	
Heated second row seats		Smart Liftgate	
		Proximity key with push button start	
3.3L LUXURY (AWD)		INCLUDES 3.3L PREMIUM STANDARD EQUIPMENT PLUS:	
4-way power adjustable front passenger's seat		Leather seating surfaces	
AM/FM/CD/SiriusXM™/MP3 audio system with 4.3" colour touch-screen audio display		Mirror-mounted turn signal indicators	
Blind Spot Detection³ and Rear Cross-Traffic Alert⁴		Panoramic sunroof	
Rear-view camera		Memory driver's seat and driver's side mirror	
Electrochromic auto-dimming rear-view mirror with HomeLink® and compass		Optional: available second row Captain's chairs (6-passenger seating)	
3.3L LIMITED (AWD)		INCLUDES 3.3L LUXURY STANDARD EQUIPMENT PLUS:	
19" aluminum alloy wheels		Deluxe metal door scuffs	
Xenon HID headlights with auto-levelling function		Supervision cluster with TFT LCD screen	
LED taillights		Ventilated front seats	
Infinity® AM/FM/CD/SiriusXM™/MP3 audio system with 10-speakers		Optional: available second row Captain's chairs (6-passenger seating)	
Navigation system with high resolution 8" touch-screen display and rear-view camera			

3.3 L

ENGINE DETAILS	
Engine type	3.3L (3,342cc)
Engine family	Lambda II
Cam design	DOHC
Block/Head composition	Aluminum/Aluminum
Horsepower @ RPM	290 @ 6,400 RPM
Torque (ft.-lbs.) @ RPM	252 lb ft @ 5,200 RPM
Bore & stroke (mm)	92.0 mm x 83.8 mm
Compression ratio (:1)	11.5
Induction system	Variable
Fuel system	Gasoline Direct Injection
Engine mounts	Transverse
Exhaust	Two separate steel pipes
Anti-Knock Control	Standard
Recommended fuel	Regular unleaded
ELECTRICAL	
Ignition system	Electronic/Distributorless
Starter	1.4 Kw
Alternator	13.5 V / 150A
Battery	80 AH
BRAKING	
Type	Anti-lock Braking System (ABS) with Electronic Brake-force Distribution (EBD)
Front	320 mm / Ventilated disc / Single piston
Rear	302 mm / Solid disc / Single piston
STEERING	
Type	Rack-mounted Motor Driven Power Steering (R-MDPS)
Overall ratio (:1)	15.03
Turns (lock to lock)	2.95
Turning diameter (m)	11.24
SUSPENSION	
Front/Rear	MacPherson struts
Front stabilizer bar (mm)	26.0
Rear stabilizer bar (mm)	21.0 / 19.0 (FWD/AWD)
BODY / CHASSIS	
Type	Unibody
Primary materials	Steel
WEIGHTS (KG)	
Curb FWD/AWD	1,790 / 1,968
GVWR FWD/AWD	2,500 / 2,550
Maximum towing capacity	2,268 with trailer brake / 750 without trailer brake
Roof rack load	100
VOLUME (L)	
Interior volume	4,531
Cargo – Behind front seats	2,265
Cargo – Behind 2 nd row seats	1,159
Cargo – Behind 3 rd row seats	383
FUEL ECONOMY* (L/100KM) – 5 CYCLE TESTING METHOD	
City (FWD/AWD)	12.9L/100km / 13.0L/100km
Highway (FWD/AWD)	9.4L/100km / 9.7L/100km
Combined (FWD/AWD)	11.3L/100km / 11.5L/100km

For more detailed specifications and information please visit hyundaicanada.com, or visit your dealer today.

• = Standard - = Not Available ◦ = Optional

		3.3L FWD	3.3L Premium	3.3L Luxury	3.3L Limited
PERFORMANCE					
Engine	3.3L V6 DOHC, D-CVVT engine	•	•	•	•
Transmission	6-speed electronic with SHIFTRONIC® manual mode	•	•	•	•
Drive configuration	Front Wheel Drive	•	-	-	-
	All-Wheel Drive	-	•	•	•
EXTERIOR					
Wheels and tires	18" x 7.5" wheels	•	•	•	-
	19" x 7.5" wheels	-	-	-	•
	P235/60R18 all-season tires	•	•	•	-
	P235/55R19 all-season tires	-	-	-	•
	Steel compact spare tire	•	•	•	•
Exterior lighting	Projector headlights	•	•	•	•
	Automatic headlights	-	•	•	•
	Fog lights	•	•	•	•
	Centre High Mount Stop Lamps (CHMSL)	•	•	•	•
	LED positioning lamps	•	•	•	•
	HID headlights (auto-levelling)	-	-	-	•
	LED taillights	-	-	-	•
	Blind Spot Detection ³ indicators	-	-	•	•
Outside mirrors	Heated with timer, body colour, manual folding	•	•	•	•
	LED side repeater lights	-	-	•	•
	LED side repeater lights	-	-	•	•
Moldings and trim	Bumpers (front & rear) lower dark grey/upper body colour	•	•	•	•
	Chrome front grille	•	•	•	•
	Chrome door handles	•	•	•	•
	Deluxe door scuff	-	-	-	•
Glass	Tinted glass (B-pillar forward)	•	•	•	•
	Rear window privacy glass (solar front + privacy glass)	•	•	•	•
Wipers	Front windshield, 2-speed with variable intermittent with washer	•	•	•	•
	Windshield wiper deicer	•	•	•	•
	Rear windshield, 2-speed with washer	•	•	•	•
Other	Rear spoiler	•	•	•	•
	Roof rack side rails	•	•	•	•
	Panoramic sunroof	-	-	•	•
	Trailer tow wiring	•	•	•	•
INTERIOR					
Seating	7-passenger capacity	•	•	•	•
	6-passenger capacity (optional) with second row Captain's chairs	-	-	◦	◦
	Cloth surface	•	•	-	-
	Leather seating surfaces	-	-	•	•
	Driver seat power lumbar support 2-way	•	-	-	-
	Driver seat power lumbar support 4-way	-	•	•	•
	12-way power driver seat	-	•	•	•
	4-way power passenger seat	-	-	•	•
	Memory function driver seat & mirrors	-	-	•	•
	Heated front seat	•	•	•	•
	Ventilated front seat	-	-	-	•
	40/20/40 rear bench split	•	•	•	•
	Rear adjustable head restraint	•	•	•	•
	Rear heated seats	-	•	•	•
	Second row sliding/reclining seats with cargo area release	•	•	•	•

		3.3L FWD	3.3L Premium	3.3L Luxury	3.3L Limited
INTERIOR (continued)					
Multimedia	AM/FM/SiriusXM™/CD/MP3 with 6-speakers	•	•	-	-
	AM/FM/SiriusXM™/CD/MP3 with 4.3" touch-screen display	-	-	•	-
	8.0" Navigation system with Infinity® touch-screen audio system and 10-speakers	-	-	-	•
	Rear park assist	-	-	•	•
	Rear-view camera	-	-	•	•
Trim	Ipod®/USB and MP3 auxiliary input jacks (center console mounted)	•	•	•	•
	Sun visors, driver & passenger illuminated vanity mirror & visor extension	•	•	•	•
	Shift knob, black, leather wrapped	-	•	•	•
HVAC	Manual air conditioning	•	-	-	-
	Dual-zone automatic climate control with clean air ionizer	-	•	•	•
	2 nd row HVAC vents	•	•	•	•
	3 rd row HVAC vents	-	•	•	•
Steering wheel	Outside temperature display within trip computer	•	•	•	•
	Leather wrapped, heated	-	•	•	•
	Audio controls with volume, mode and seek	•	•	•	•
	Bluetooth® controls	•	•	•	•
	Manual tilt/telescopic	•	•	•	•
Instrumentation	Supervision cluster with TFT LCD screen	-	-	-	•
Convenience	Cruise control	•	•	•	•
	Bluetooth® hands-free phone system	•	•	•	•
	Driver and front passenger power windows with auto-up/down and pinch protection	•	•	•	•
	Smart Liftgate	-	•	•	•
	Remote keyless entry system with alarm	•	•	•	•
	Electrochromic auto-dimming rear-view mirror with Homelink® and compass	-	-	•	•
	115-Volt power outlet	-	•	•	•
	Rear side window sunshades	-	•	•	•
Proximity key with push button start	-	•	•	•	
SAFETY					
Airbags ¹	Advanced driver and front passenger (2)	•	•	•	•
	Occupancy Classification System (OCS)	•	•	•	•
	Driver and front passenger seat-mounted side-impact (2)	•	•	•	•
	Side-curtain roll-over sensing roof-mounted (2)	•	•	•	•
	Driver knee (1)	•	•	•	•
Safety	Latch lower anchors and upper tether anchors (second row)	•	•	•	•
	4-way adjustable head restraints	•	•	•	•
	Power window lock-out button	•	•	•	•
	Child-proof rear door locks	•	•	•	•
	Electronic Stability Control (ESC) with Traction Control System (TCS) ²	•	•	•	•
Security	Anti-Lock Braking System (ABS) with Brake Assist (BA) & Electronic Brake-force Distribution (EBD)	•	•	•	•
	Alarm system integrated with remote keyless entry	•	•	•	•
EXTERIOR / INTERIOR DIMENSIONS (MM)					
		ALL MODELS			
Overall width (exclude mirrors)	1,885	Head room 1 st row/2 nd row/3 rd row			1,006 / 1,002 / 908
Overall height (with roof rack)	1,700	(with sunroof)			(971 / 974 / 908)
Tread width, front (18"/19")	1,628 / 1,628	Leg room 1 st row/2 nd row/3 rd row			1,120 / 1,050 / 800
Tread width, rear (18"/19")	1,639 / 1,639	Hip room 1 st row/2 nd row/3 rd row			1,439 / 1,406 / 1,120
Ground clearance	185	Shoulder room 1 st row/2 nd row/3 rd row			1,508 / 1,488 / 1,369
Coefficient of drag (cd)	0.34				



hyundaicanada.com/santa-fe-xl

^{TM/®}The Hyundai name, logos, product names, feature names, images and slogans are trademarks owned by Hyundai Auto Canada Corp. Specifications, features, illustrations, accessories, materials and equipment and all other information shown in this brochure are based on the latest information available at the time of publication. Although descriptions are believed to be correct, accuracy cannot be guaranteed. Hyundai Auto Canada Corp. reserves the right to make any changes or modifications at any time, without notice or obligation, including, without limitation, in colour, specifications, features, accessories, materials, equipment and models. Some vehicles are shown with optional equipment. All Hyundai warranties have no deductible. ¹Hyundai's Comprehensive Limited Warranty coverage covers most vehicle components against defects in workmanship under normal use and maintenance conditions. ²Hyundai's 24-Hour Roadside Assistance Program is a limited service and does not cover certain costs or expenses. Roadside Assistance is not a warranty. ³Fuel economy figures are based on manufacturer's testing and are used for comparison purposes only. Actual fuel efficiency may vary based on driving conditions and the addition of certain vehicle accessories. ⁴The Supplemental Restraint (Airbag) System (SRS) is designed to work with the 3-point seatbelt system. The SRS deploys in certain frontal and/or side-impact conditions where significant injury is likely. The SRS is not a substitute for seatbelts, which must still be worn at all times. Children under the age of 13 should be securely restrained in the rear seat. NEVER place a child-seat in the front seat of a Hyundai vehicle. ⁵Electronic Stability Control (ESC) and Traction Control System (TCS) are meant to enhance conscientious driving habits and are not a substitute for safe driving practices. ESC cannot control your vehicle's stability under all driving situations. No system, no matter how advanced, can overcome physics or correct poor driving. Speed, road conditions and driver steering input will affect whether ESC can help prevent loss of control. See Owner's Manual for details and limitations. ⁶Never rely completely on Blind Spot Detection (BSD) and be sure to use proper lane changing procedures. BSD will not detect every object or vehicle and will not prevent accidents. Always look over your shoulder and use your mirrors to confirm clearance. See Owner's Manual for further details and limitations. ⁷Never rely exclusively on the Rear Cross-Traffic Alert. Always look over your shoulder and use your mirrors to confirm rear clearance. There are limitations to the function, detection, range and clarity of the system. The system may not detect every vehicle. This system does not detect stationary objects. Vehicle must be in reverse and has to be traveling at 10 km/h or less. See Owner's Manual for further details and limitations. Bluetooth® word mark and logos are registered trademarks owned by Bluetooth SIG, Inc., the SiriusXM™ name is a trademark of SiriusXM Satellite radio Inc., iPod® is a registered trademark of Apple Inc., HomeLink® is a registered trademark of Johnson Controls Inc., YES Essentials® is a registered trademark of SAGE Automotive Interiors Inc., Infinity® is a registered trademark of Harman International Inc., and any use of such marks by Hyundai is under license. All other trademarks and trade names are those of their respective owners.



facebook.com/hyundaicanada
youtube.com/hyundaicanada
instagram.com/hyundaicanada
twitter.com/hyundaicanada