



2010
E-SERIES **BUILT**
Ford
TOUGH

FREEDOM of CHOICE

That's just one benefit of North America's **biggest selection** of full-size vans, cutaways and wagons — along with strength, flexibility and **Built Ford Tough®** determination. It moves people and products in so **many configurations**. And with every chassis boasting a **GVWR of over 8500 lbs.**, it's easy to design vehicles to suit your needs. No wonder trades, fleets, institutions and community organizations have made these hardworking vehicles the **best-sellers in their class¹** since 1979.



Front: E-250 Cargo Van in Oxford White; Rear (left to right): E-350 Cutaway in Oxford White with Cube Van Upfit, E-350 Cutaway in Oxford White with Service Body Upfit, E-350 Cutaway in Oxford White with Cube Van Upfit, E-350 Cargo Van in Oxford White, E-350 Cutaway in Oxford White with Service Body Upfit; all with available equipment

E-SERIES STRENGTHS

- 10,000-lb. maximum tow rating²
- Factory Trailer Brake Controller option
- Vocation-specific racks and bins
- Huge range of aftermarket upfits
- Available AdvanceTrac® with RSC® (Roll Stability Control™)
- Optional Ford Work Solutions™ productivity tools³
- Ambulance Prep Package now available with 6.8L V10 gas power⁴
- New 225-amp heavy-duty alternator
- New optional Ford SYNC® voice-activated communications and entertainment system⁵
- All sideview mirrors now include spotter lenses
- New Mid-Series Exterior Upgrade Package
- Updated High-Series Exterior Upgrade Package

¹Full-Size Van class. ²Properly equipped. ³Select availability. ⁴Late availability. ⁵Limited availability. See your Ford Dealer for details. ⁶See your Ford Dealer for details. ⁷Available with gas engine applications only. Vehicles throughout this PDF may be shown with optional and aftermarket upfit equipment.

E-SERIES POWERTRAINS

FLEXIBLE FUEL: 4.6L/5.4L GAS V8 FFVs

All E-Series 4.6L and 5.4L gas engines are Flexible Fuel capable. Ford Flex Fuel Vehicles (FFVs) give you the power of choice. E85 or gasoline? FFV lets you decide right at the pump. Both E-Series FFVs can run on E85 (85% ethanol/15% gasoline), straight gasoline, or any combination of the two. Since Ford introduced FFVs back in the mid-1990s, we've put nearly 2 million on the road, with a stream of refinements along the way.

Ford engines are at the heart of E-Series' versatility and capability. Step up to the 5.4L V8 FFV to get extra punch for high-capacity applications. Its SOHC architecture pumps out 255 hp and 350 lb.-ft. of torque across a wide powerband.

CNG/LPG FUEL-CAPABLE GAS POWER

Enables 5.4L V8 and 6.8L V10 gas engines to run on Compressed Natural Gas (CNG) or Liquefied Petroleum Gas (LPG).⁶ Modifications include hardened intake and exhaust valves as well as hardened valve seats.

6.8L GAS V10

For best-in-class gas torque, opt for an available 6.8L V10. Its Electronic Throttle Control (ETC) modulates torque at the drive wheels for smooth, seamless engine response.

6.0L POWER STROKE® V8 TURBO DIESEL⁵

This proven workhorse pumps out 235 hp and generates an impressive 440 lb.-ft. of torque. Cast-iron block and heads withstand the combustion pressures of peak diesel operation. The robust design also features a stiff bedplate, which enhances durability. The Power Stroke is backed by a 5-year/100,000-mile limited warranty.⁵

FORD'S MOST RUGGED TRANSMISSION

Proven on F-Series Super Duty® Chassis Cabs and Pickups, the available TorqShift® 5-speed automatic transmission is designed for the high torque outputs of powerful E-Series engines. An innovative Tow/Haul Mode⁷ reduces gear hunting when towing and uses engine braking when descending steep grades.



E-Series Cargo Van in Medium Flint with available equipment

MAX UTILITY AND CONNECTIVITY

ALL BUSINESS: HELPING YOU GET WORK DONE.

Get in, get comfortable and get to work. The instrument panel offers intuitive controls, and a host of standard features and options makes E-Series more convenient and productive. A warm welcome is waiting.

A. MESSAGE CENTER OPTION

Provides important information such as tire pressure, miles to empty, average fuel economy, as well as systems checks for fuel level and much more. Includes engine-hour meter.

B. UPFITTER SWITCHES

These available switches can operate up to 4 high-power relays for heavy-duty accessories. A super-clean installation that's pre-wired and ready to go.

C. MANUAL FRONT AIR CONDITIONING

Standard on all vans, cutaways and wagons.

D. ROOMY CENTER CONSOLE

This standard feature has lots of usable storage, and the upright storage bin holds clipboards or a laptop.

YOU TALK. SYNC LISTENS.[™] FORD SYNC[®] FEATURES 911 ASSIST,[™] PLUS TRAFFIC, DIRECTIONS AND INFORMATION

Fair warning: Once you start this conversation, you'll never want to stop. This remarkable traveling companion is an available **Ford-exclusive technology**, developed in association with Microsoft[®]. Simply plug in your MP3 player or thumb drive. Along with your paired Bluetooth[®]-enabled mobile phone, instantly you can select your music, make calls and get information, **all with simple voice commands**¹. Plus, 911 Assist dials for help from your phone if any airbag deploys (directly to a 911 operator, not to a call center, like other systems)². For all the latest details, visit SyncMyRide.com.

SYNC INCLUDES ALL THESE USEFUL FUNCTIONS:

- Turn-by-turn directions³
- Traffic alerts³
- Up-to-the-minute weather³
- Business searches³
- Vehicle Health Reports
- Personalized news: business, sports, entertainment and more³

NAVIGATION WITH SIRIUS TRAVEL LINK[™]

Easy voice activation for everything from driving directions to accessing tunes. Displayed on a bright 6.5" LCD touch screen, the available Navigation Radio System also provides nearly 10 gigabytes of storage space for your photos and music (up to 2400 songs). Class-exclusive SIRIUS Travel Link⁴ comes with a 6-month trial subscription to keep you in the know with up-to-the-minute local traffic, weather, fuel prices, sports scores, and movie listings with showtimes. All at your fingertips.

SIRIUS[®] SATELLITE RADIO

Available SIRIUS Satellite Radio⁴ comes with a 6-month trial subscription: Get more than 130 channels including 100% commercial-free music, plus the best sports, news, talk and entertainment, coast-to-coast.



¹Driving while distracted can result in loss of vehicle control. Only use mobile phones and other devices, even with voice commands, when it is safe to do so. ²The vehicle's electrical system (including the battery), the wireless service provider's signal, and a connected mobile phone must all be available and operating for 911 Assist to function properly. These systems may become damaged in a crash. The paired mobile phone must be turned on, connected to SYNC, and the 911 Assist feature enabled in order for 911 to be dialed. ³These SYNC services not available with optional Navigation System or SIRIUS Travel Link. See your dealer for details. ⁴Real-time traffic monitoring available in select markets. Some features are unavailable while driving. Service available in the 48 contiguous states and Washington, D.C. Subscriptions are governed by SIRIUS Terms and Conditions at sirius.com/serviceterms.

STRONG & Stable

Put E-Series' massive towing capabilities (up to 10,000 lbs.¹) to their best use with available cutting-edge features like the Integrated Trailer Brake Controller, Rear View Camera and more. They're all designed to help you tow big, while remaining smartly in control.

A. SUSPENSION AND STEERING

The front sway bar helps deliver solid handling. Front and rear shocks are tuned to deliver a smooth ride. The steering gear boost-curve provides excellent road feel and steering feedback to the driver.

B. CLASS-EXCLUSIVE STANDARD V8 OR AVAILABLE V10

E-Series is the only cargo van in its class to come with a standard 4.6L V8 FFV engine. E-Series gas engines feature a silent-design cam drive for smooth, quiet operation, plus a fail-safe cooling system and a 90,000-mile scheduled tune-up interval.² For massive power and torque, choose the available 6.8L gas V10.

C. CNG/LPG FUEL-CAPABLE GAS POWER

5.4L V8 and 6.8L V10 gas engines are now available to run on Compressed Natural Gas (CNG) or Liquefied Petroleum Gas (LPG).³ Modifications include hardened intake and exhaust valves as well as hardened valve seats.

D. HEAVY-DUTY BRAKE SYSTEMS

Large front and rear rotors and calipers provide a huge swept area for sure stopping power. Robust components and pad materials promote low operating temperatures while supporting heavy-duty capability and durability. Standard on all 2010 E-Series.

E. BODY-ON-FRAME CONSTRUCTION

E-Series' rugged ladder frame is the foundation for a maximum available GVWR of 14,500 lbs., the best in its class. Available front GAWR peaks at a class-leading 5000 lbs.

F. HOTCHKISS REAR SUSPENSION

The Hotchkiss solid-axle design allows various model-specific spring and axle ratings for a wide range of capacities.



G. FACTORY-INTEGRATED TRAILER BRAKE CONTROLLER

This sophisticated option uses braking input, vehicle speed and information from the vehicle's Anti-lock Brake System (ABS) to balance the performance of the van brakes and electric trailer brakes.⁴ It's technology you won't find on any other full-size van.

EFFECTIVE STABILIZATION

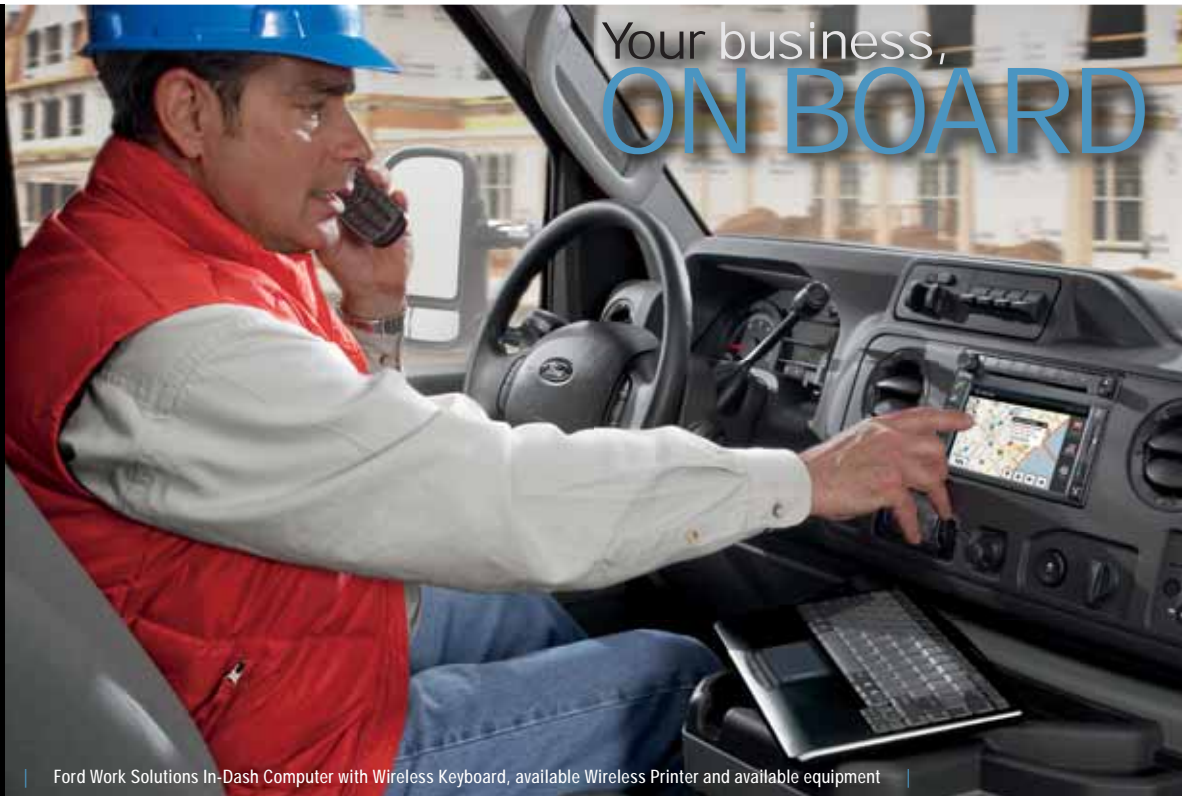
AdvanceTrac[®] with RSC[®] (Roll Stability Control™)⁵ is class-exclusive technology. It's standard on any Wagon or Recreational Van equipped with a gas engine, and optional on Commercial Vans when equipped with gas engines. Working in conjunction with the Anti-lock Brake System (ABS), traction control and yaw control, the system automatically determines when and how to apply individual brakes and modify engine power to help keep all 4 wheels firmly planted.



¹Properly equipped. ²Under normal driving conditions with routine fluid and filter changes. ³Late availability. See your Ford Dealer for more information. ⁴TBC verified to be compatible with electronically controlled drum brakes. ⁵Remember that even advanced technology cannot overcome the laws of physics. It's always possible to lose control of a vehicle due to inappropriate driver input for the conditions. For more information on AdvanceTrac with RSC, visit fordvehicles.com.

E-SERIES **BUILT FORD TOUGH** 2010

Your business,
ON BOARD



Ford Work Solutions In-Dash Computer with Wireless Keyboard, available Wireless Printer and available equipment

SMART TOOLS FOR TOUGH TRUCKS

Only the toughest name in trucks could assemble this all-star lineup. From communications and computing to navigation, fleet tracking and security, every position is filled by a pro.

A. MOBILE-OFFICE COMPUTING POWER

The available Internet-capable in-dash computer, featuring a Windows® CE operating system, is the heart of Ford Work Solutions™¹ Use the wireless keyboard to create spreadsheets and other documents, download files from the web via the Sprint® Mobile Broadband Network² – even print them when you add the available wireless printer. Full-function hands-free calling and turn-by-turn navigation from Garmin® are also included. Your office has truly gone mobile.³

B. TOOL LINK™

Ford Work Solutions Tool Link,⁴ developed with DeWALT®, uses Radio Frequency Identification (RFID) technology to track your tools. Use it to check the truck before you leave for a job, making sure you have what you need, then check again at the end of the workday to see that all your gear is on board. It can save you time and frustration – the perfect workmate.



C. CREW CHIEF™

Put available Crew Chief telematics devices on your fleet trucks, and you can track 'em, 24/7. Just pull up the website using the Ford Work Solutions in-dash computer in your truck, or any computer with web access. Crew Chief, offered by Microlise™, shows which truck is closest to the job you need done. It can also provide information that's vital to the life of your trucks and your profits. Easy-to-use analysis tools⁵ can help you keep your fleet in shape, fuel efficient and green.



¹Ford Work Solutions include Ford Licensed Accessories. See dealer for limited warranty details. ²Sprint subscription and 1-year agreement required. ³Driving while distracted can result in loss of vehicle control. Only use mobile phones and other devices, even with voice commands, when it is safe to do so. To avoid driving distractions, some functions are disabled while the truck is in motion. ⁴Tool Link RFID system cannot read tagged tools in metal tool boxes. ⁵Service fee required.

Windows is a registered trademark of Microsoft Corporation. DeWALT is a registered trademark of DeWALT Industrial Tool Company used under license. Garmin is a registered trademark of Garmin Ltd. Microlise Group Limited is a company registered in England and Wales with company number 1670983. Sprint and the logo are trademarks of Sprint. Sprint Mobile Broadband Network reaches over 249 million people. Coverage not available everywhere. See Sprint.com/coverage for details.



E-250 Extended Length Cargo Van in Royal Red with available equipment

A WIDE RANGE OF ABILITIES

E-Series Vans provide **flexibility** to adapt to your trade, **capability** to do the job, and **durability** for the long run. Up to **278 cu. ft.** of available cargo room features standard **double-wall construction** to help protect outer body work from shifting loads. As always, E-Series Vans offer you **lots of choices**: 4 combinations of engine/transmissions, the TorqShift® 5-speed automatic with Tow/Haul Mode,¹ gasoline or diesel power, sliding or swing-out side cargo doors, windows all around or panel sides, **no-charge racks and bins packages**, and trade-specific **upfitter packages**. The challenges are out there. E-Series is ready to meet them.

¹Gas engine applications only. ²Maximum capabilities shown are for properly equipped vehicles with required equipment and a 150-lb. driver. Weight of additional options, equipment, passengers and cargo must be deducted from this weight. Cutaway ratings are based on incomplete vehicles. Final vehicle manufacturer weights and ratings will vary due to upfit and modification requirements.

MAXIMUM CAPABILITIES (LBS.) ²	GVWR	PAYLOAD
E-150 VAN	8520 – 8600	3240
E-150 EXTENDED VAN	8600	3180
E-250 VAN	8900 – 9000	3610
E-250 EXTENDED VAN	8900 – 9000	3460
E-350 VAN	9500	4040
E-350 EXTENDED VAN	9500	3900

A. REAR VIEW CAMERA

Activated when you shift into reverse, this option shows a rearview video image that includes a center line and distance guides – perfect for backing up to your cargo or hooking up a trailer. (Navigation Radio System version shown.)

B. TELESCOPING TRAILER TOW MIRRORS

E-Series Cargo Vans come with these standard manually telescoping/folding trailer tow mirrors. They let you see around big trailers and provide large viewing areas. All E-Series driver sideview mirrors now include integrated spotter lenses to help optimize your field of view.





A wide range of storage solutions by Masterack® can help keep you organized, all available at no extra charge.¹

A, B & C. QUIETFLEX® III COMPOSITE RACKS AND BINS PACKAGE

Talk about versatility. The E-Track Cargo Management System **A** is located behind the driver bulkhead. The removable toolbox **B** can be carried to a job site. Bottom-tapered uprights allow 4'-wide sheet storage. Snap-in Dividers **C** reconfigure or remove instantly without tools.

D. MASTERACK STEEL RACKS AND BINS

This rugged package includes a set of steel cabinets, shelves, drawers and shelf dividers. It's ideal for secure storage of tools and parts. A full-width, lockable safety partition provides work area access from the passenger compartment.

E. ECONOCARGO™ CARGO MANAGEMENT SYSTEM

Durable panels of high-density polyethylene help keep cargo in place and offer an advantage: Functional insulation helps the E-Series interior retain heat and cold. That's a definite plus for dozens of applications, including food service, produce delivery, medical supply and more. (Color of strap may vary.)

STEEL-REINFORCED REAR LICENSE PLATE HOUSING

This rugged enhancement **F** also includes a steel lock cylinder flange. It boosts the tamper resistance of the rear door locking mechanism. Standard on Vans and Wagons.

SECURILOCK® PASSIVE ANTI-THEFT IGNITION SYSTEM

Designed to help prevent the engine from being started unless a coded key programmed to your vehicle is used. Available on single-rear-wheel models only.

AERIAL BUCKET CARGO VAN SUSPENSION PACKAGE

This option is available on E-350 Vans, and includes heavy-duty front and rear springs to help balance the weight of a bucket mechanism and rear-bumper platform.

E-GUARD CARGO PROTECTION SYSTEM

A segment-exclusive option featuring reinforced rear- and side-door locks **G**, E-Guard is available on Commercial Vans with 60/40 split side cargo doors. To provide an even higher level of security, the system is designed to be unlocked only with the vehicle key, even on models with remote keyless entry.



¹To eligible customers under the Ford Commercial Services Program.



E-350 Cutaway in Oxford White with Cube Van Upfit and available equipment

E-250 SUPER DUTY® CUTAWAYS

A compact design and rugged 4.6L Flexible Fuel-capable V8 defines the first level in the E-Series Cutaway lineup. With its mid-ship fuel tank location, you benefit from enhanced rear load capacity.

SRW E-350 SUPER DUTY CUTAWAYS

The SRW configuration offers a GVWR of up to 10,050 lbs. A mid-ship fuel tank location delivers enhanced rear load capacity. Available on 138" SRW wheelbase with 5.4L V8 FFV only.

E-350 SUPER DUTY CUTAWAYS

Supremely versatile heavy-duty Cutaways, the E-350 lineup offers 3 powertrain choices as well as optional Shuttle Bus Prep, Ambulance, Motorhome and School Bus Packages. 158" and 176" wheelbase chassis are available with a class-leading 5000-lb. front GAWR and a GVWR of up to 12,500 lbs.

E-450 SUPER DUTY CUTAWAYS

E-450 offers a standard 5.4L V8 FFV. You can spec giant payloads (see chart below), and select GCWRs up to 20,000 lbs.¹ for outstanding towing capability. A 5000-lb. front GAWR is standard with an optional 6.8L V10 or 6.0L Power Stroke® V8 Turbo Diesel. An available 40-gal. fuel tank provides more usable rear GAWR. The standard 4-wheel disc brake system with ABS provides the stopping power you need to handle huge loads.

STRIPPED CHASSIS

What's your application and what do you want to build? We've got the platform that can put it on the road. Learn more when you visit commtruck.ford.com/vehicles/stripped_chassis/.



AMBULANCE PREP PACKAGE

For 2010, the standard engine is the workhorse V10 gas engine with 305 hp and 420 lb.-ft. of torque on tap.



MAXIMUM CAPABILITIES (LBS.) ²	GVWR	PAYLOAD
E-250 CUTAWAY SRW	8600	4302
E-350 CUTAWAY SRW	9600 – 10,050	5268
E-350 CUTAWAY DRW	10,000 – 12,500	7376
E-450 CUTAWAY DRW	14,050 – 14,500	9040
E-350 STRIPPED CHASSIS SRW	9000 – 9600	5368
E-350 STRIPPED CHASSIS DRW	10,000 – 12,500	8026
E-450 STRIPPED CHASSIS DRW	14,050 – 14,500	9747

¹See your Ford Dealer for details. ²Maximum capabilities shown are for properly equipped vehicles with required equipment and a 150-lb. driver. Weight of additional options, equipment, passengers and cargo must be deducted from this weight. Cutaway ratings are based on incomplete vehicles. Final vehicle manufacturer weights and ratings will vary due to upfit and modification requirements.

2010
E-SERIES **BUILT Ford TOUGH**



EVERYBODY INTO THE WAGON

E-350 15-Passenger Extended Length Wagon in Medium Pebble Cloth with available equipment

With **room and comfort to spare**, everybody gets the VIP treatment. E-Series Wagons welcome big crews and all their gear. **Air conditioning is standard.** Seating includes 7-, 8-, 11-, 12-, 14-, or 15-passenger¹ options, with a center-aisle ship-thru option too. All rear bench seats have center-position, 3-point, seat-integrated safety belts. A self-latching system makes rear seats easy to remove and re-install. Lots of comfort. **Lots of choices. That's E-Series Wagon.**

¹Passenger and cargo capacity limited by weight and weight distribution. 11-, 12-, 14- and 15-passenger vehicles may be classified as buses and may require appropriate licensing.



REVERSE SENSING SYSTEM

When activated, this optional feature works automatically when slowly backing up or parallel parking. It senses certain objects up to 6' behind your vehicle, beeping more rapidly as you get closer – a big help when full vehicle loads limit your rear visibility. Available on Vans and Wagons with rear step or contour bumpers.



XLT PREMIUM PACKAGE

Add optional luxuries to dress up your 7-passenger E-150 XLT Regular Length Wagon. This package features 1st- and 2nd-row leather-trimmed captain's chairs, Ford SYNC[®] a standard 6-way power driver seat, remote keyless entry, a leather-wrapped steering wheel and privacy glass. Exterior appointments include forged-aluminum wheels and running boards.



MOBILITY MOTORING

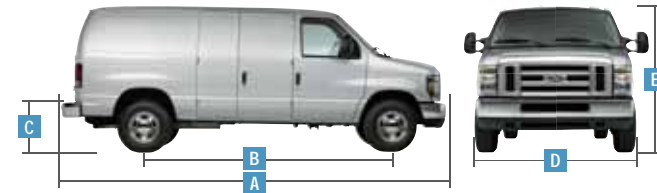
ACCESSIBILITY UPFITTING

E-Series is an outstanding mobility choice. Aftermarket upfits such as a fully automatic wheelchair lift, raised roof, flip seating, wheelchair restraint system and hand controls are available. Discover a world of possibilities at mobilitymotoringprogram.com.



E-SERIES DIMENSIONS & CAPABILITIES

EXTERIOR	E-150 REGULAR LENGTH	E-150 EXTENDED LENGTH	E-250/E-350 SUPER DUTY® REG. LENGTH	E-250/E-350 SUPER DUTY EXT. LENGTH
A. Overall length	216.7"	236.4"	216.7"	236.4" (Van) 236.7" (Wagon)
B. Wheelbase	138.0"	138.0"	138.0"	138.0"
C. Loadfloor height	28.0" (Van) 28.8" (Wagon)	28.6"	31.1"/29.5" (Van) 30.2" (Wagon)	31.5"/29.7" (Van) 29.1" (Wagon)
D. Overall width (excluding mirrors) Overall width (including mirrors)	79.4" 106.0" (Van) 95.7" (Wagon)	79.4" 106.0"	79.4" 106.0" (Van) 95.7" (Wagon)	79.4" 106.0" (Van) 95.7" (Wagon)
E. Height	82.4" (Van) 82.1" (Wagon)	82.6"	84.8"/83.7" (Van) 83.1" (Wagon)	85.0"/83.6" (Van) 82.3" (Wagon)
Rear cargo door opening height	49.5" (Van) 46.8" (Wagon)	49.5"	49.5" (Van) 46.8" (Wagon)	49.5" (Van) 48.0" (Wagon)
Rear cargo door opening width	53.9" (Van) 54.4" (Wagon)	53.9"	53.9" (Van) 54.4" (Wagon)	53.9" (Van) 54.4" (Wagon)
Side cargo door opening height	48.2" (Van) 47.2" (Wagon)	48.1"	48.2" (Van) 47.2" (Wagon)	48.1" (Van) 47.2" (Wagon)
Swing-out side cargo door opening width	44.8"	44.8"	44.8"	44.8"
Sliding side cargo door opening width	45.6"	45.6"	45.6"	45.6"
INTERIOR				
1st Row				
Head room	42.0"	42.0"	42.0"	42.0"
Shoulder room	68.1"	68.1"	68.1"	68.1"
Hip room	65.6"	65.6"	65.6"	65.6"
Leg room	40.0"	40.0"	40.0"	40.0"
2nd Row (Wagon)				
Head room	40.2"	—	40.2"	40.2"
Shoulder room	71.7"	—	71.7"	72.8"
Hip room	66.5"	—	66.5"	68.6"
Leg room	38.8"	—	38.8"	38.8"
3rd Row (Wagon)				
Head room	40.1"	—	40.1"	40.1"
Shoulder room	71.7"	—	71.7"	71.7"
Hip room	66.8"	—	66.8"	66.8"
Leg room	40.0"	—	40.0"	40.0"
4th Row (Wagon)				
Head room	—	—	38.9"	39.6"
Shoulder room	—	—	69.4"	69.4"
Hip room	—	—	66.1"	66.1"
Leg room	—	—	39.4"	39.4"
5th Row (Wagon)				
Head room	—	—	—	37.4"
Shoulder room	—	—	—	67.5"
Hip room	—	—	—	65.8"
Leg room	—	—	—	37.0"
Van Only				
Maximum cargo volume (cu. ft.) behind 1st row	237.8	278.3	237.8	278.3



ENGINE RATINGS

	4.6L SOHC V8 FFV	5.4L SOHC V8 FFV	6.8L SOHC V10	6.0L POWER STROKE® V8 TURBO DIESEL
Horsepower (hp @ rpm)	225 @ 4800	255 @ 4500	305 @ 4250	235 @ 3150
Torque (lb.-ft. @ rpm)	286 @ 3500	350 @ 2500	420 @ 3250	440 @ 1600

MAXIMUM LOADED TRAILER WEIGHT¹ (lbs.)

AUTOMATIC TRANSMISSION

WAGON

Engine	Axle Ratio	GCWR (lbs.)	E-150	E-350 SUPER DUTY	E-350 SUPER DUTY EXTENDED
4.6L SOHC V8 FFV	3.73	11,500	5600	—	—
	4.10	12,000	6100	—	—
5.4L SOHC V8 FFV	3.73	13,000	7000	6700	6500
	4.10	13,000	7000	6700	6500
6.8L SOHC V10	3.73	15,000	—	8500	8300
	4.10	18,500	—	10,000	10,000

VAN²

Engine	Axle Ratio	GCWR (lbs.)	E-150	E-150 EXTENDED	E-250	E-250 EXTENDED	E-350 SUPER DUTY	E-350 SUPER DUTY EXTENDED
4.6L SOHC V8 FFV	3.73	11,500	6000	5900	6000	5900	—	—
	4.10	12,000	6500	6400	6500	6400	—	—
5.4L SOHC V8 FFV	3.73	13,000	7400	7300	7400	7300	7300	7200
	4.10	13,000	7400	7300	7400	7300	7300	7200
6.8L SOHC V10	3.73	15,000	—	—	—	—	9100	9000
	4.10	18,500	—	—	—	—	10,000	10,000
6.0L V8 Diesel	3.55	16,000	—	—	—	—	9600	9500
	4.10	20,000	—	—	—	—	10,000	10,000

CUTAWAY

Engine	Axle Ratio	GCWR (lbs.)	E-250 SRW	E-350 SRW	E-350 DRW	E-450 DRW
4.6L SOHC V8 FFV	4.10	12,000	7500	—	—	—
5.4L SOHC V8 FFV	3.73	9600	—	4700	—	—
		10,050	—	—	4900	—
	4.10	10,600	—	5700 ³	—	—
		13,000	—	8000 ³	7700	—
6.8L SOHC V10	4.56	14,050	—	—	—	8500
	4.10	18,500	—	10,000	10,000	—
		4.56	20,000	—	—	—
6.0L V8 Diesel	4.10	20,000	—	10,000	10,000	10,000

¹Maximum capabilities shown are for properly equipped vehicles with required equipment and a 150-lb. driver. Weight of additional options, equipment, passengers and cargo must be deducted from this weight. Cutaway ratings are based on incomplete vehicles. Final vehicle manufacturer weights and ratings will vary due to upfit and modification requirements. ²For maximum trailer weights with Crew Van, deduct 200 lbs. from the weights shown (except with 18,500 lbs. and 20,000 lbs. GCWR). ³E-350 SRW Cutaway with 5.4L V8 only (midship fuel tank) 10,600-lb. GCWR.

E-SERIES VAN FEATURES & OPTIONS

E-150 COMMERCIAL		
E-250 COMMERCIAL		
E-350 SUPER DUTY® COMMERCIAL		
MECHANICAL		
● ● –	4.6L V8 FFV engine	
○ ○ ○	5.4L V8 FFV engine	
– – ○	6.8L V10 engine	
– – ○	6.0L Power Stroke® V8 Turbo Diesel engine (limited availability)	
● ● ●	4-speed automatic overdrive transmission	
– – ○	5-speed automatic TorqShift® transmission with overdrive and Tow/Haul Mode (req. 6.8L V10 engine)	
– – ○	5-speed automatic TorqShift transmission with overdrive (diesel engine only)	
○ ○ ○	AdvanceTrac® with RSC® (Roll Stability Control™) (gas engines only; n/a with limited-slip axle or aerial bucket suspension)	
○ ○ ○	Alternator – 155-amp (5.4L V8 and 6.8L V10 engines only)	
– – ○	Alternator – Dual-system 140-/120-amp (diesel engine only)	
– – ○	Alternator – 140-amp (diesel engine only)	
– – ○	Alternator – 225-amp (6.8L V10 engine only)	
○ ○ ●	Auxiliary fuel port ¹	
● ● ●	Auxiliary transmission fluid cooler	
○ ○ ○	Axle – Limited-slip ²	
○ ○ ○	Battery – Heavy-duty auxiliary 78-amp-hr (gas engines only; incl. with Ambulance Prep Package with 6.8L V10)	
○ ○ ○	CNG/LPG fuel-capable engine ² – Hardened intake valves, exhaust valves and valve seats (late availability; 5.4L V8 and 6.8L V10 engines only)	
○ ○ ○	Engine block heater ³	
– – ○	Front GAWR – Maximum up to 4600 lbs. ⁴ (Fleet only; incl. with Ambulance Prep Package and Aerial Bucket Cargo Van Suspension Package)	
○ ○ ○	Integrated Trailer Brake Controller ⁵ (req. Trailer Tow Package, message center, and AdvanceTrac with RSC on 4.6L V8 and 5.4L V8; n/a with diesel engine)	
– – ○	Power TakeOff (PTO) provision (diesel engine only)	
– – ○	Spare tire delete	
● – –	Speed limitation – 65-mph governed top speed (4.6L V8; Fleet only)	
● – –	Speed limitation – 75-mph governed top speed (4.6L V8; Fleet only)	
○ ○ ○	Traction Control (gas engines only; n/a with AdvanceTrac with RSC)	
SAFETY/SECURITY		
● ● ●	Airbags ⁶ – Driver and front-passenger front	
● ● ●	Daytime running lamps (Fleet only)	
● ● ●	E-Guard Cargo Protection System™ and side-door security system ²	
○ ○ ○	Passenger airbag cut-off switch (n/a with Crew Van Package or seats delete)	
● ● ●	Power 4-wheel disc brakes with Anti-lock Brake System (ABS)	
○ ○ ○	SecuriLock® passive anti-theft ignition system	
● ● ●	Tire Pressure Monitoring System (excludes spare)	
SEATING		
● ● ●	Dual vinyl front bucket seats	
○ ○ ○	Dual cloth front bucket seats	
○ ○ ○	Dual cloth front captain's chairs ⁷	
○ ○ ○	Power driver seat – 6-way (req. front captain's chairs)	
APPEARANCE/COMFORT/CONVENIENCE		
● ● ●	16" steel wheels with sport wheel covers	
○ ○ ○	16" forged-aluminum wheels (req. gas engine)	
○ ○ ○	16" White-painted steel wheels (deletes sport wheel covers; late availability)	
● ● ●	Air conditioning (front only)	
○ ○ ○	Air conditioning – High-capacity (front and rear)	
○ ○ ○	Air conditioning delete	
● ● ●	AM/FM stereo with digital clock and 2 speakers	
○ ○ ○	AM/FM stereo/single-CD player with MP3 capability, audio input jack, digital clock and 4 speakers (only 2 speakers with E-Guard)	

E-150 COMMERCIAL		
E-250 COMMERCIAL		
E-350 SUPER DUTY COMMERCIAL		
APPEARANCE/COMFORT/CONVENIENCE (continued)		
○ ○ ○	Premium Navigation Radio System featuring SIRIUS Travel Link™ – Single-CD player, MP3 capability, audio input jack and SIRIUS Satellite Radio with 6-month subscription (req. Power Group and Ford SYNC®)	
○ ○ ○	Ford SYNC (incl. auto-dimming rearview mirror; req. cruise control; n/a with base radio or in-dash computer)	
○ ○ ○	SIRIUS Satellite Radio with 6-month subscription (n/a with base radio or radio delete; incl. with SIRIUS Travel Link on Premium Navigation Radio System)	
○ ○ ○	Radio Prep Package – 2 speakers	
○ ○ ○	Radio Prep Package – 4 speakers (n/a with E-Guard)	
○ ○ ○	Radio delete	
● ● ●	Bumpers – Front and rear contour, Black-painted	
● ● ●	Bumpers – Front and rear contour, chrome	
● ● ●	Bumper – Rear step, Black (incl. Class I Trailer Tow Prep)	
● ● ●	Bumper – Rear step, chrome (incl. Class I Trailer Tow Prep)	
○ ○ ○	Cruise control (req. SYNC)	
● ● ●	Floor covering – Front vinyl	
○ ○ ○	Floor covering – Rear vinyl	
○ ○ ○	Instrument panel electronic message center with engine-hour meter (standard with diesel engine; req. with integrated Trailer Brake Controller)	
○ ○ ○	Power Group (door locks, windows, aero-style sideview mirrors, remote keyless-entry system)	
○ ○ ○	Rear View Camera (n/a with base radio or radio delete)	
○ ○ ○	Reverse Sensing System (req. rear step or contour bumpers and message center)	
○ ○ ○	Running boards – Door-length on driver side; full-length on passenger side	
○ ○ ○	Side cargo door – Sliding solid panel	
● ● ●	Side cargo doors – Swing-out 60/40 doors	
○ ○ ○	Sideview mirrors – Aero-style, manual-adjustable with manual convex spotters	
● ● ●	Sideview mirrors – Aero-style, power-adjustable with manual convex spotters ⁸	
● ● ●	Sideview mirrors – Manual telescoping trailer tow, manual-adjustable with manual convex spotters	
○ ○ ○	Sideview mirrors – Manual telescoping trailer tow, power-adjustable with manual convex spotters ⁹	
○ ○ ○	User-defined upfitter switches – 4 (n/a with 4.6L V8 engine; req. 155-amp or 225-amp alternator)	
○ ○ ○	Privacy glass ²	
○ ○ ○	Windows – Fixed rear cargo door glass	
○ ○ ○	Windows – Fixed side/fixed rear cargo door glass ²	
○ ○ ○	Windows – Swing-out side/fixed rear cargo door glass ²	
○ ○ ○	Windows – All around (incl. swing-out side/fixed rear cargo door glass)	
PACKAGES²		
– – ○	Aerial Bucket Cargo Van Suspension Package – 4600 lbs. front GAWR, 7810 lbs. 9-leaf rear springs (SRW); rear GAWR reduced to 5400 lbs. with gas engines (n/a with AdvanceTrac with RSC)	
– – ○	Ambulance Prep Package – Auxiliary Heater/AC Connector Package, auxiliary fuel port, 4-10:1 limited-slip rear axle (diesel), 3.73:1 rear axle (6.8L V10), dual alternators (diesel), 225-amp alternator (6.8L V10), heavy-duty 78-amp-hr battery (6.8L V10), dual 78-amp-hr batteries, floor pan extended side and rear, fixed side/rear door tinted glass, front vinyl headliner with HIC extension, maximum front GAWR, modified vehicle wiring kit and vinyl sun visors (diesel and 6.8L V10 engines only)	
○ ○ ○	Commercial Van Package – Power Group (door locks, windows, aero-style sideview mirrors, remote keyless-entry system), rear step bumper, fixed rear cargo door glass, and cruise control	
● ● ●	Handling Package – Front stabilizer bar, and heavy-duty front and rear shock absorbers	

E-150 COMMERCIAL		
E-250 COMMERCIAL		
E-350 SUPER DUTY COMMERCIAL		
PACKAGES² (continued)		
○ ○ ○	Crew Van Package – 2nd-row vinyl bench seat, metal-mesh bulkhead, partial headliner, full B-pillar trim panels, low-series polypropylene side door and rear door-trim panels, LH lower trim panel behind driver seat, restraints with metal retractor cover for 2nd-row bench seat, pull handle on 40% side door and RH back door, and front and rear vinyl floor covering	
○ ○ ○	Dome/Cargo Light Kit – 3 additional cargo lights ²	
○ ○ ○	No-Charge EconoCargo™ Cargo Management System – Insulated polyethylene panels covering walls and ceiling, includes bulkhead with lockable door, 2 tracks and tie-down straps ¹⁰	
○ ○ ○	EconoCargo Upgrade Package (General Delivery; req. EconoCargo System) – 2 wire shelving modules (48"H x 16"D x 49"W), 2 single uprights (48"), 1 double upright (48"), 6 wire shelves (16" x 48") and 2 wire shelves (12" x 48")	
○ ○ ○	Mid-Series Exterior Upgrade Package – Aerodynamic headlamps, chrome grille and black-painted front and rear contour bumpers	
○ ○ ○	High-Series Exterior Upgrade Package – Front and rear contour chrome bumpers, chrome grille surround, and aerodynamic headlamps	
○ ○ ○	Insulation Package – Full-length cloth headliner, cloth sun visors, upper B-pillar trim panels, polypropylene side door and rear door-trim panels	
○ ○ ○	Interior Upgrade Package – Full-length carpeting, side/rear cargo door-trim panels, dash sound absorber, full-length cloth headliner, cloth sun visors, full B-pillar trim, dual cloth front captain's chairs, front carpeted floor mats, Insulation Package and Power Group	
○ ○ ○	Premium Van Group – Dual front captain's chairs, AM/FM stereo/single-CD player with digital clock and 4 speakers, Exterior Upgrade Package, Power Group, cruise control and Insulation Package	
○ ○ ○	Modified Wiring Kit – Underhood powertrain circuit tap-ins including Power TakeOff (PTO) functions and vehicle speed output, and modified vehicle connections for customized wiring harness provisions	
○ ○ ○	No-Charge Masterack® Racks and Bins Package – Fully installed steel shelving, drawers and cabinets (incl. bulkhead with lockable door) ¹⁰	
○ ○ ○	No-Charge QuietFlex® III Composite Racks and Bins Package – Enclosed lockable bin, lockable wheel-well door, 2 deep drawers, 4 shallow drawers, 3 triple hooks, 10 shelf dividers and composite bulkhead with lockable door ¹⁰	
○ ○ ○	Racks and Bins Upgrade Package 1 (General Contractor; requires Racks and Bins Package) – Ship-thru ladder rack, ladder-rack crossbow	
○ ○ ○	Racks and Bins Upgrade Package 2 (Electrical Contractor/Appliance Repair; requires Racks and Bins Package) – 12-drawer cabinet, ¹¹ tilt shelf, ¹¹ toolbox door (additional), wire spool rack, triple hooks (additional) and shelf divider set (additional)	
○ ○ ○	Racks and Bins Upgrade Package 3 (Plumbing/HVAC Service; req. Racks and Bins Package) – 12-drawer cabinet, ¹¹ tilt shelf ¹¹ and tank rack (3-tank capacity)	
● ● ●	Trailer Tow Prep Package – Class I – Trailer wiring harness	
○ ○ ○	Trailer Tow Package – Class II/III/IV – Trailer wiring harness (blade-style female connector), electric brake controller tap-in capability, relay system for backup/B+running lights, and frame-mounted hitch receiver	
FORD WORK SOLUTIONS™		
○ ○ ○	Crew Chief™ vehicle tracking system (n/a with in-dash computer)	
○ ○ ○	In-dash computer featuring Windows® CE operating system with touch screen (n/a with SYNC, SIRIUS Satellite Radio or Crew Chief)	
○ ○ ○	Tool Link™ tool tracking system (req. in-dash computer)	
FACTORY-INVOLVED ACCESSORIES		
○ ○ ○	Power Code™ Remote Start System (req. Power Group)	

● Standard ● Select Availability ○ Optional — Not Available

¹Standard on diesel, optional on gas engines. ²Restrictions apply, see dealer for details. ³Included with diesel. ⁴Computer selected – 4600 lbs. max. ⁵TBC verified to be compatible with electrically actuated drum brakes only. ⁶Always wear your safety belt and secure children in the rear seat if equipped. ⁷Available as part of Interior Upgrade Package. ⁸Included as part of Power Group. ⁹Requires Power Group. ¹⁰Requires vinyl rear floor covering. ¹¹12-drawer cabinet and tilt shelf not included on QuietFlex III Package.



E-SERIES WAGON FEATURES & OPTIONS

				E-150 XL
				E-150 XLT
				E-350 SUPER DUTY® XL
				E-350 SUPER DUTY XLT
MECHANICAL				
●	●	—	—	4.6L V8 FFV engine (4-speed automatic overdrive transmission)
○	○	●	●	5.4L V8 FFV engine (4-speed automatic overdrive transmission)
—	—	○	○	6.8L V10 engine (5-speed automatic TorqShift® transmission with overdrive and Tow/Haul Mode)
●	●	●	●	AdvanceTrac® with RSC® (Roll Stability Control™)
○	○	○	○	Alternator — 155-amp (5.4L V8 and 6.8L V10 engines only)
—	—	○	○	Alternator — 225-amp (6.8L V10 engine only)
○	○	○	○	Auxiliary fuel port (n/a with 4.6L V8 engine)
○	○	○	○	Battery — Heavy-duty auxiliary
○	○	○	○	CNG/LPG fuel-capable engine¹ — Hardened intake valves, exhaust valves and valve seats (late availability; 5.4L V8 and 6.8L V10 engines only)
○	○	○	○	Engine block heater
○	○	○	○	Integrated Trailer Brake Controller² (req. Trailer Tow Package and message center)
—	—	○	○	Spare tire delete
●	●	—	—	Speed limitation — 65-mph governed top speed (4.6L V8; Fleet only)
●	●	—	—	Speed limitation — 75-mph governed top speed (4.6L V8; Fleet only)
SAFETY/SECURITY				
●	●	●	●	Airbags³ — Driver and front-passenger front
●	●	●	●	Belt-Minder® front safety belt reminder
●	●	●	●	Daytime running lamps (Fleet only)
●	●	●	●	Dual-note horn
●	●	●	●	Power 4-wheel disc brakes with Anti-lock Brake System (ABS)
○	○	○	○	Remote keyless-entry system with panic alarm and illuminated entry (req. Power Windows and Locks Group and Interior Upgrade Package on XL)
○	○	○	○	SecuriLock® passive anti-theft ignition system
●	●	●	●	Tire Pressure Monitoring System (excl. spare)
SEATING				
●	—	●	—	Vinyl-trimmed seating
○	●	○	●	Cloth-trimmed seating
—	●	—	—	Leather-trimmed seating (req. XLT Premium Package)
—	○	—	○	Power driver seat — 6-way with manual lumbar
●	—	—	—	8 passengers: (2) front bucket seats; (2) 3-passenger rear bench seats
—	●	—	—	8 passengers: (2) front captain's chairs; (2) 3-passenger rear bench seats
—	—	—	○	11 passengers: (2) front captain's chairs; (3) 3-passenger rear bench seats (Extended Length only)
—	—	●	—	12 passengers: (2) front bucket seats; (2) 3-passenger rear bench seats; (1) 4-passenger rear bench seat (Regular Length only)
—	—	—	●	12 passengers: (2) front captain's chairs; (2) 3-passenger rear bench seats; (1) 4-passenger rear bench seat (Regular Length only)
—	—	●	—	15 passengers: (2) front bucket seats; (3) 3-passenger rear bench seats; (1) 4-passenger rear bench seat (Extended Length only)
—	—	—	●	15 passengers: (2) front captain's chairs; (3) 3-passenger rear bench seats; (1) 4-passenger rear bench seat (Extended Length only)
—	●	—	—	7 passengers: (4) leather-trimmed captain's chairs for 1st and 2nd rows; (1) 3-passenger rear bench seat (req. XLT Premium Package)

				E-150 XL
				E-150 XLT
				E-350 SUPER DUTY XL
				E-350 SUPER DUTY XLT
SEATING (continued)				
—	—	○	○	11-passenger Center Aisle Seating Prep Package⁴ (Regular Length only)
—	—	○	○	14-passenger Center Aisle Seating Prep Package⁴ (Extended Length only)
APPEARANCE/COMFORT/CONVENIENCE				
●	●	●	●	16" steel wheels with sport wheel covers
○	○	○	○	16" forged-aluminum wheels
●	●	●	●	Air conditioning (front only)
○	●	●	●	Air conditioning — High-capacity (front and rear; standard on XL Extended Length)
○	○	○	○	Air conditioning delete (n/a on Extended Length)
●	—	●	—	AM/FM stereo with digital clock and 6 speakers
○	●	○	●	AM/FM stereo/single-CD player with MP3 capability, audio input jack, digital clock and 6 speakers
●	○	○	○	Premium Navigation Radio System featuring SIRIUS Travel Link™ — Single-CD player, MP3 capability, audio input jack and SIRIUS Satellite Radio with 6-month subscription (req. Power Windows and Locks Group on XL and Ford SYNC®)
○	○	○	○	Ford SYNC (incl. auto-dimming rearview mirror; req. cruise control; n/a with base radio on XL, radio delete or in-dash computer)
○	●	○	●	SIRIUS Satellite Radio with 6-month subscription (n/a with base radio on XL or radio delete; incl. with SIRIUS Travel Link on Premium Navigation Radio System)
○	○	○	○	Radio delete
●	—	●	—	Bumpers — Front and rear contour, Black-painted
●	●	●	●	Bumpers — Front and rear contour, chrome
○	—	○	—	Bumper — Rear step, Black (incl. Class I Trailer Tow Prep; n/a with High-Series Exterior Upgrade Package)
○	○	○	○	Bumper — Rear step, chrome (incl. Class I Trailer Tow Prep; req. High-Series Exterior Upgrade Package on XL)
○	●	○	●	Cruise control
●	○	●	○	Floor covering — Full-length vinyl
●	●	●	●	Floor covering — Full-length carpet
●	●	●	●	Floor mats — Carpeted
○	○	○	○	Instrument panel electronic message center with engine-hour meter (req. with Reverse Sensing System and integrated Trailer Brake Controller)
●	●	●	●	Power points — 3
●	●	●	●	Power Windows and Locks Group
○	○	○	○	Privacy glass
○	○	○	○	Rear View Camera (n/a with base radio on XL, radio delete or air conditioning delete; req. high-capacity air conditioning on Regular Length XL)
○	○	○	○	Reverse Sensing System (req. rear step or contour bumpers and message center)
○	●	○	○	Running boards — Door-length on driver side; full-length on passenger side
●	—	●	—	Sideview mirrors — Aero-style, manual-adjustable with manual convex spotter
●	●	●	●	Sideview mirrors — Aero-style, power-adjustable with manual convex spotter (req. Power Windows and Locks Group on XL)

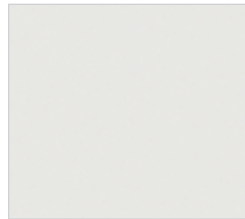
				E-150 XL
				E-150 XLT
				E-350 SUPER DUTY XL
				E-350 SUPER DUTY XLT
APPEARANCE/COMFORT/CONVENIENCE (continued)				
—	○	—	○	Sideview mirrors — Telescoping trailer tow, power-adjustable with manual convex spotters
○	○	○	○	Sliding side cargo door — Sliding solid panel
●	●	●	●	Tilt steering wheel
○	○	○	○	User-defined upfitter switches — 4 (n/a with 4.6L V8 engine; req. 155-amp or 225-amp alternator)
—	●	—	●	Visors — Cloth, illuminated mirror, with driver map strap
●	●	●	●	Windshield wipers — Interval
PACKAGES¹				
○	—	○	—	Mid-Series Exterior Upgrade Package — Aerodynamic headlamps, chrome grille and black-painted front and rear contour bumpers
○	—	○	—	High-Series Exterior Upgrade Package — Contour chrome bumpers and grille surround, and aerodynamic headlamps
●	●	●	●	Insulation Package — Cloth sun visors, color-keyed sliding door track, upper B-pillar trim panels, and side and rear trim panels with insulation padding
○	●	○	●	Interior Upgrade Package — Full-length carpeting, high-level side/rear cargo door-trim panels, cloth seats, dash sound absorber, headlamps-on-alert chime, front carpeted floor mats, Insulation Package, and Power Windows and Locks Group
○	○	○	○	Remote Keyless-Entry Package — 2 key fobs (requires Power Windows and Locks Group and Interior Upgrade Package on XL)
○	○	○	○	Trailer Tow Prep Package — Class I
○	○	○	○	Trailer Tow Package — Class II/III/IV
—	○	—	—	XLT Premium Package — Leather-trimmed captain's chairs for 1st and 2nd rows, 6-way power driver seat, remote keyless entry, leather-wrapped steering wheel, privacy glass, forged-aluminum wheels, running boards and SYNC
FORD WORK SOLUTIONS™				
○	○	○	○	Crew Chief™ vehicle tracking system (n/a with in-dash computer)
○	○	○	○	In-dash computer featuring Windows® CE operating system with touch screen (n/a with SYNC, SIRIUS Satellite Radio or Crew Chief)
FACTORY-INVICED ACCESSORIES				
○	○	○	○	Power Code™ Remote Start System (req. Power Windows and Locks Group)

● Standard ● Select Availability ○ Optional — Not Available

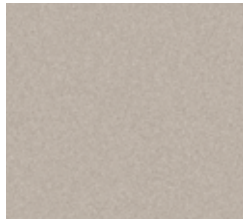
¹Restrictions apply, see dealer for details. ²TBC verified to be compatible with electrically actuated drum brakes only. ³Always wear your safety belt and secure children in the rear seat. ⁴Seating system upfit available at additional charge.

Comparisons based on 2009 competitive models (Full-Size Vans), publicly available information and Ford certification data at time of release. Some features discussed may be optional. Vehicles throughout this PDF are shown with optional and aftermarket equipment. Features shown may be offered only in combination with other options or subject to additional ordering requirements or limitations. Dimensions and capacity ratings shown may vary due to optional features and/or production variability. Following release of the PDF, certain changes in standard equipment, options and the like, or product delays may have occurred which would not be included in these pages. Your Ford Dealer is the best source for up-to-date information. Ford Division reserves the right to change product specifications at any time without incurring obligations. Body manufacturers are responsible for compliance certification of the completed vehicle. The Ford New Vehicle Limited Warranty and any government certification made by Ford shall cover only the vehicle as manufactured by Ford and shall not extend to any addition, modification or change of or to the vehicle by the Ford Authorized Pool Account.

E-SERIES EXTERIOR & INTERIOR COLORS, FABRICS, TRIM & WHEELS



Oxford White



Pueblo Gold Metallic



School Bus Yellow



Royal Red Metallic



Dark Blue Pearl Metallic



Ingot Silver Metallic



Vermillion Red



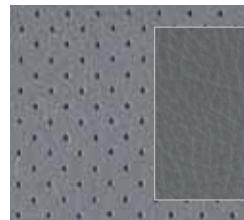
Black



Cloth — Medium Pebble
Standard on XLT Wagon, available on Van and Cutaway



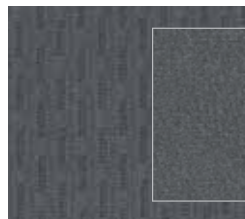
Leather — Medium Pebble
Included with XLT Premium Wagon



Vinyl — Medium Flint
Standard on XL Wagon, Van and Cutaway



Cloth — Medium Flint
Available on XL Wagon, Van and Cutaway



Cloth — Medium Flint
Standard on XLT Wagon, available on Van and Cutaway



Leather — Medium Flint
Included with XLT Premium Wagon



16" Sport Wheel Cover



16" Forged-Aluminum Wheel

Interior Colors

Vehicle Type	Medium Pebble	Medium Flint
XL/XLT Wagon		
Oxford White	●	●
Pueblo Gold Metallic ¹	●	●
School Bus Yellow (XL: Fleet only)		●
Royal Red Metallic ¹	●	●
Dark Blue Pearl Metallic ¹		●
Ingot Silver Metallic ¹		●
Vermillion Red	●	●
Black	●	●
XLT Premium Wagon		
Oxford White	●	●
Pueblo Gold Metallic ¹	●	
Royal Red Metallic ¹	●	●
Dark Blue Pearl Metallic ¹		●
Black	●	●
Van²		
Oxford White	●	●
Pueblo Gold Metallic ¹	●	●
School Bus Yellow (Fleet only)		●
Royal Red Metallic ¹	●	●
Dark Blue Pearl Metallic ¹		●
Ingot Silver Metallic ¹		●
Vermillion Red	●	●
Black	●	●
Cutaway³		
Oxford White	●	●
School Bus Yellow (Fleet only)	●	●
Royal Red Metallic ¹	●	●
Dark Blue Pearl Metallic ¹	●	●
Ingot Silver Metallic ¹	●	●
Vermillion Red	●	●
Black	●	●

INTERIORS: ● Medium Pebble ● Medium Flint

¹Additional cost. ²Medium Pebble requires Interior Upgrade Package or Premium Van Group on Commercial Van. ³Medium Pebble only available with Motorhome Prep Package on Cutaway.

Colors shown are representative only. Not all colors are available on all models. See your dealer for actual paint/trim options.

New Vehicle Limited Warranty. We want your Ford E-Series ownership experience to be the best it can be. So under this warranty, your new vehicle comes with 3-year/36,000-mile Bumper-to-Bumper Coverage, 5-year/60,000-mile Powertrain Warranty Coverage, 5-year/50,000-mile Safety Restraint Coverage, and 5-year/unlimited-mile Corrosion (Perforation) Coverage — all with no deductible. Please ask your Ford Dealer for a copy of this limited warranty.

Roadside Assistance. Covers your vehicle for 5 years or 60,000 miles, so you have the security of knowing that help may be only a phone call away should you run out of fuel, lock yourself out of the vehicle, or need towing. Your Ford Dealer can provide complete details on all of these advantages.

Ford Credit. Get the ride you want. Whether you plan to lease or finance, you'll find the choices that are right for you at Ford Credit. Ask your Ford Dealer for details or check us out at fordcredit.com.

Ford Extended Service Plan. For a purchase or lease, the Ford Extended Service Plan (ESP) gives you "Peace-of-Mind" protection designed to cover key vehicle components and protect you from the cost of unexpected repairs. Ask your dealer for a Ford ESP, the only service contract backed exclusively by Ford and honored at all Ford Lincoln Mercury dealerships.

Insurance Services. Get Ford Motor Company quality in your auto insurance. Our program offers industry-leading benefits and competitive rates. Call 1-877-367-3847, or visit us at fordvip.com for a no-obligation quote. Insurance offered by American Road Services Company (in CA, American Road Insurance Agency), a licensed agency and subsidiary of Ford Motor Company.

THE FACTS ABOUT FORD.



Quality Trucks.

FACT: Ford has **more trucks on the road with over 250,000 miles** than any other brand.¹ And Ford F-Series has been **America's best-selling line of trucks** for 32 years in a row.



Green Trucks.

FACT: Ford vans and pickups achieve **best-in-class or unsurpassed fuel economy** in 2 different classes.² And Power Stroke[®] diesels meet stringent federal emissions standards with **Ford Clean Diesel Technology.**[™]



Safe Trucks.

FACT: We're working to help keep you and yours safe. **AdvanceTrac[®] with RSC^{®3}** is now available on more Ford Truck models than ever. And F-150's extensive safety features help make it **America's Safest Full-Size Pickup.**⁴



Smart Trucks.

FACT: From **exclusive box-side and tailgate steps to Ford Work Solutions[™]** to **Ford SYNC[®]**, no other brand of trucks offers **more innovative technology and productivity tools** to help you get the job done.

Visit commtruck.ford.com to learn more.



¹Based on vehicle registration data and latest odometer readings available to R. L. Polk & Co. for 1992 and newer model year full-size pickups and vans still on the road in the U.S. as of April 2008. ²Based on Ranger 2010 EPA-estimated 22 mpg city/27 hwy., 4x2 with 2.3L engine and 5-speed manual transmission; and Transit Connect Small Van 2010 EPA-estimated 22 mpg city/25 hwy. ³Remember that even advanced technology cannot overcome the laws of physics. It's always possible to lose control of a vehicle due to inappropriate driver input for the conditions. For more information on AdvanceTrac with RSC, visit fordvehicles.com. ⁴Based on both NHTSA 5-Star crash test ratings and IIHS Top Safety Pick. Star ratings are part of the U.S. Department of Transportation's Safercar.gov program (www.safercar.gov).