

# ServiceFocus

## Engine Construction

### Exhaust Valves

Open to discharge combustion gases from the cylinders.

### Intake Valves

Open to draw the air-fuel mixture into the cylinders.

### Timing Belt/Chain

Synchronizes the rotation of the camshaft, which opens and closes the intake/exhaust valves, with the movement of the crankshaft.

### Oil Pan

Receptacle for engine oil.

### Cylinder Head

The indented lower surface forms the upper portion of the combustion chamber.

### Camshaft

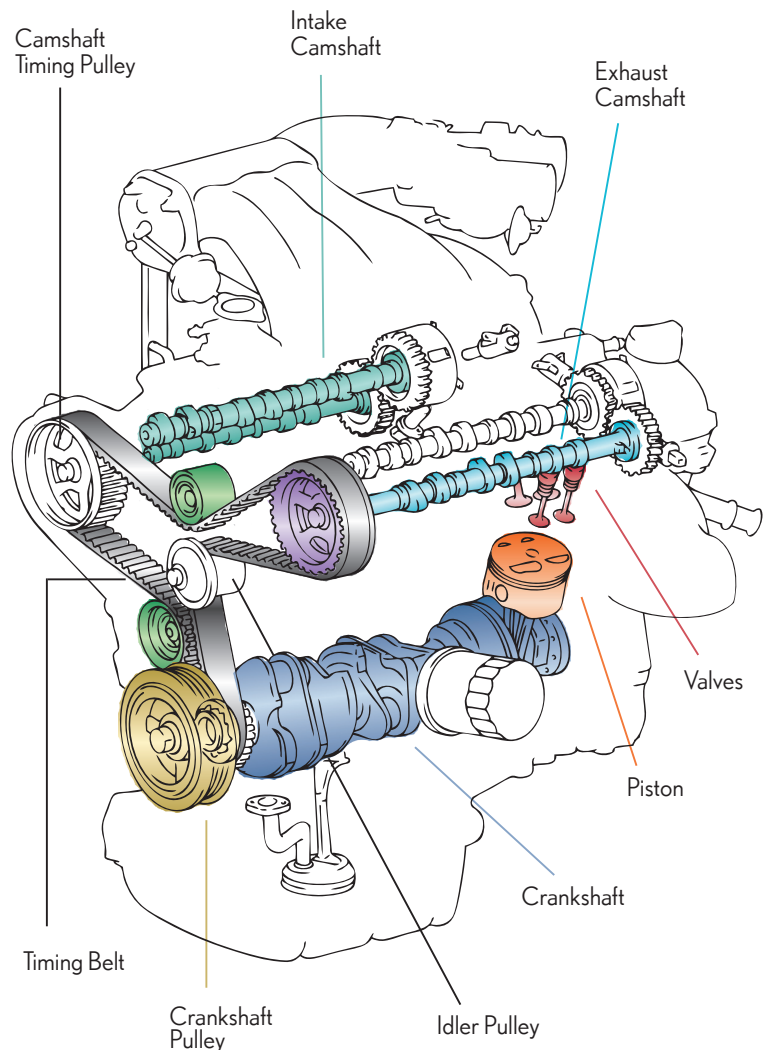
Driven by timing belt or chain. It opens and closes the intake and exhaust valves.

### Pistons

Move up and down in the cylinder as a result of receiving the pressure created by the explosion of the air-fuel mixture.

### Crankshaft

Converts the up-and-down motion of the piston into rotational motion via the connecting rods. This motion is transferred to the transmission which makes the vehicle move.



# Product Focus

## Manufacturer's Genuine Air Filters

### What do they do?

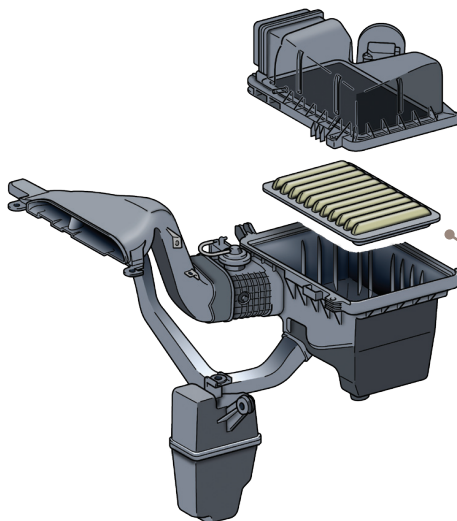
- Air filters prevent harmful particles from entering your engine and causing damage.
- Cleans up to 24,000 litres of air per hour when driving at 60 km/h.

### When to service?

- Air filters eventually become clogged with trapped particles and as a result this will reduce engine performance.
- A clogged filter starves your engine for air, reducing fuel economy and increasing emissions.

### When to replace?

- Remove and inspect every 6 months or 8,000 kilometres and replace as needed.

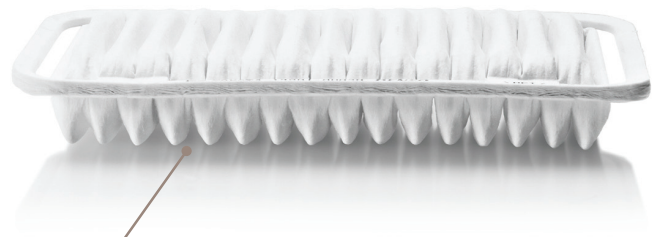


#### Proper Balance

Of efficient filtration and unrestricted airflow.

#### Quality Materials

Made from a non-woven cloth.



#### Multi-Layered Element

Incorporating coarse, medium and fine filters, traps particles of different sizes and resists clogging for long service life.

#### Exact Fit

Ensure proper sealing which is essential in keeping dirt out of your engine.

# Product Focus

## Manufacturer's Genuine Timing Belts

### What do they do?

- Drive the camshafts, which control the opening and closing of the engine's intake and exhaust valves.
- Precise valve operation is critical to efficient engine operation.

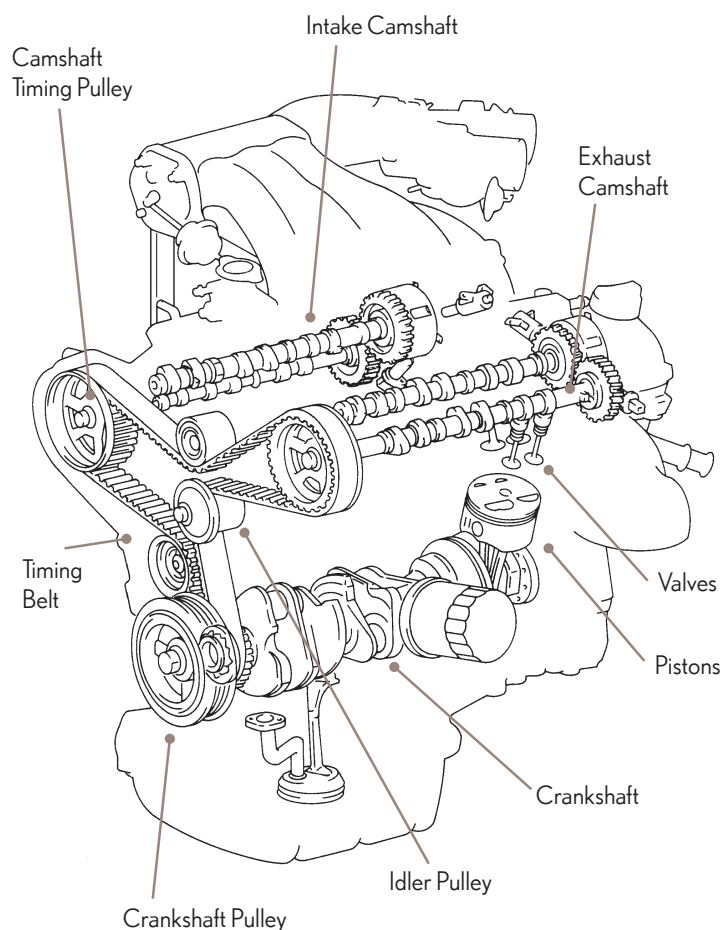
### Why replace them?

- Timing belts are quiet, efficient and unseen, so they tend to be forgotten.
- Over time, they stretch, crack, become brittle and will eventually break.
- Breakage will stop your engine dead and could cause major internal damage.

### When to replace?

- Timing belts should be replaced according to the manufacturer's required maintenance schedule.
- Timing belt replacement involves a considerable amount of engine disassembly.

The timing belt connects to or interacts with:



Designed by the same engineers who built your Lexus.

Manufacturer's Genuine belts match your engine perfectly.



Ensure peak performance and reliability.

# Product Focus

## Manufacturer's Genuine Mufflers

### What do they do?

- Help minimize exhaust noise and vibration.
- Help tune exhaust back pressure for efficient engine performance.
- Help direct heat and exhaust gases away from vehicle.

### Why do they need replacing?

- Even though the original equipment muffler will offer you years of trouble free driving, over time heat, vibration, road salt and moisture wear out and corrode your muffler.
- The vehicle will typically start to sound different prior to failure.

### Warranty

- Coverage on a replacement manufacturer's genuine muffler is 12 months or 20,000 kilometres.
- Unlike others, our warranty includes all bolts and gaskets required to install the muffler.
- Lexus mufflers are complete assemblies.

