

ServiceFocus

Brake System

Brake Fluid

This hydraulic fluid distributes pressure via the master cylinder to the wheels. Contact your Lexus Assistant Service Manager for appropriate brake fluid service intervals for your Lexus vehicle.

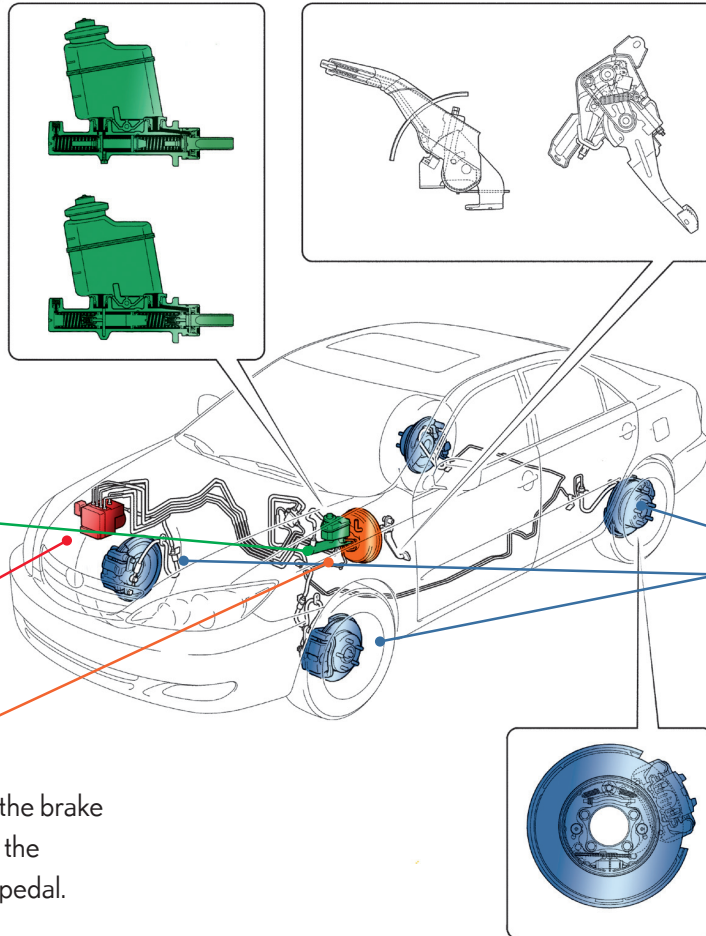
Master Cylinder

Changes the force applied to the brake pedal into hydraulic force.

ABS Actuator

Brake Booster

Increases the force applied to the brake master cylinder in response to the driver's pressure on the brake pedal.



Disc Brake

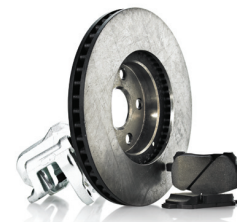
When the brakes are applied, the caliper clamps the brake pads against both sides of the rotor, which slows the rotation of the front wheels.



Remanufactured
Caliper



Manufacturer's Genuine
Brake Pads



Manufacturer's Genuine
Rotors

Product Focus

Manufacturer's Genuine Brake Pads

What do they do?

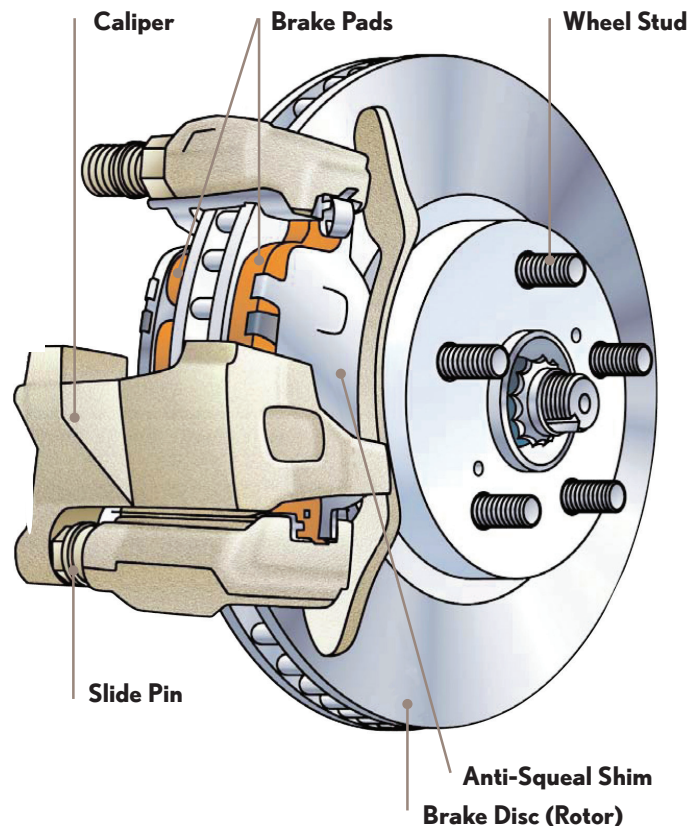
- When you apply pressure to the brake pedal, the caliper clamps the brake pads against each side of the brake rotor, creating friction and slowing your vehicle down.
- Brake pads must create the proper amount of friction to deliver smooth stopping performance with a minimum of noise while operating under the harshest conditions.

Why service them?

- Brake pads are a critical part of your braking system.
- Pads are designed to wear with use and the rate of wear depends on usage and loads.
- Constant exposure to the elements may result in rust build-up, which can cause brake dragging, pulling, pulsating and/or abnormal noise.
- Regular lubrication and cleaning of braking system components helps ensure proper function and reduce premature wear.

When to service?

- Brake service should be performed according to the manufacturer's required maintenance schedule. This will help reduce premature wear and abnormal brake noise during brake application.
- If brakes drag, pull, pulsate or produce abnormal noise, see your dealer immediately.



Manufacturer's Genuine brake pads are engineered to match your vehicle model, providing an optimum balance of braking performance, reduced noise and dust, and extended pad life.



Provides smooth braking while minimizing rotor wear.

ProductFocus

Manufacturer's Genuine Brake Fluid

What is it?

- Brake fluid is a type of hydraulic fluid used in hydraulic brake applications in automobiles to provide optimal braking performance.

What does it do?

- Brake fluid is used to transfer force under pressure from where it is created through hydraulic lines to the braking mechanism near the wheels.
- Lubricates braking system components.
- Prevents corrosion of metal brake lines.

Features

- Manufacturer's Genuine Fluid.
- Higher wet boiling point.
- Exceeds DOT 3 requirements.
- Will remain viscous and will not freeze.

Additional Information

- Store brake fluid in a clean, dry area and only in its original container.
- Always reseal the container after use to keep moisture out.



ProductFocus

Manufacturer's Genuine Remanufactured Parts

What are they?

- A range of key parts that are "remanufactured" using Manufacturer's Genuine components.
- They are put through stringent performance tests to ensure "like new" performance and Manufacturer's Genuine Quality.
- They're virtually identical to the original part, giving you the perfect fit and uncompromised performance – guaranteed.

Why use them?

- Using remanufactured parts in place of new parts offers significant cost savings, without a loss of performance.
- Using remanufactured parts helps reduce our impact on the environment.
- Eliminates potential problems that often result from using aftermarket "should work" or "consolidated" units.
- Covered by a 12 month warranty with no kilometre restriction.
- "Rebuilt" is not "remanufactured." Aftermarket rebuilders typically repair or replace only the broken, worn or damaged components.
- Essential wear items are replaced with new Manufacturer's Genuine parts, regardless of their condition.
- Any other components that do not meet Lexus' specifications are also replaced with new parts.
- As part of the Lexus remanufacturing process, where appropriate, the latest design enhancements in Lexus technology and engineering are incorporated.



Brake Calipers



Starter



Alternator

Product Focus

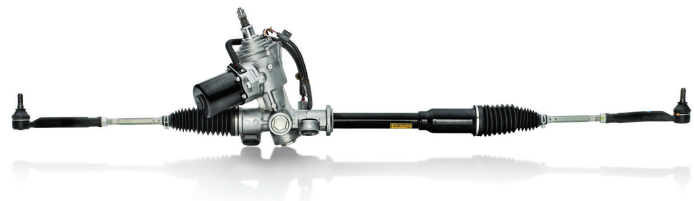
Manufacturer's Genuine Remanufactured Parts

Key Benefits

- Remanufacturing process is controlled and measured to exacting Lexus quality standards.
- Many components are cleaned and repainted for a like-new appearance and corrosion protection.
- All remanufactured products must pass stringent performance tests to ensure like-new performance and Manufacturer's Genuine Quality.
- A great economical alternative to new Manufacturer's Genuine Parts.



CV Axle Shaft

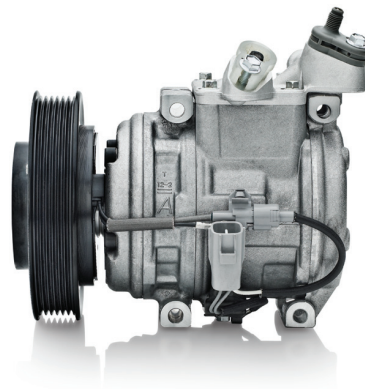


Steering Rack

Lexus Remanufactured Parts

The following are currently available for most model applications:

- Brake calipers
- Alternators
- Starters
- Steering racks
- CV axle shafts
- Transaxles
- A/C compressors



A/C Compressor