

2019 | GUIDEBOOK SERIES

SORENTO

A simple guide to help you decide



The Power to Surprise



FIRST UP:

What do you want from an SUV?

Drive with enthusiasm – and drive with all the gear you need to make the destination as exhilarating as the journey.



POWERFUL DRIVETRAIN*

The 3.3-litre gasoline direct injection (GDI) V6 generates a robust 290 horsepower and 252 lb.-ft. of torque.



DYNAMAX™ ALL-WHEEL DRIVE*

Enhanced traction and control that confidently grips the road in any condition.



TOWING CAPACITY**10

Sorento gives you the power to pull up to 5,000 lb.



DRIVE MODE SELECT

Choose between drive modes to adjust steering sensitivity, shift points and throttle mapping.



*Available feature. See features page or visit kia.ca/sorento for full details.

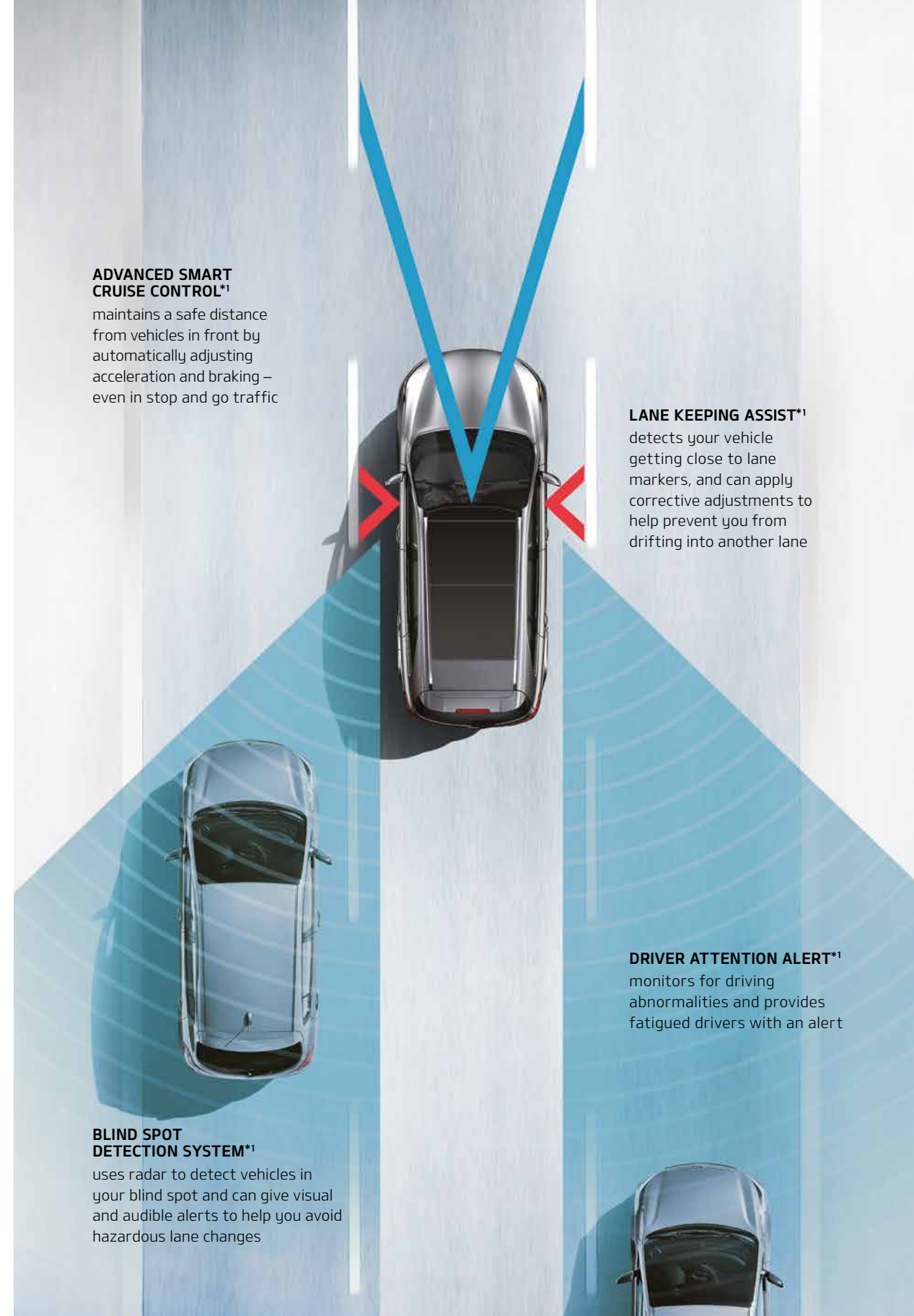


Helping you
**REMAIN
 CENTRED**
 amid the chaos of life



Vehicles in your blind spot, changing lanes in traffic and unintentional drifting are just a few of the hazards that are part of everyday driving. Thankfully, these advanced features are up to the challenge, providing you with alerts and assistance as you make your way down the road.

*Available feature. See features page or visit kia.ca/sorento for full details.



**ADVANCED SMART
 CRUISE CONTROL*¹**

maintains a safe distance from vehicles in front by automatically adjusting acceleration and braking – even in stop and go traffic

LANE KEEPING ASSIST*¹

detects your vehicle getting close to lane markers, and can apply corrective adjustments to help prevent you from drifting into another lane

DRIVER ATTENTION ALERT*¹

monitors for driving abnormalities and provides fatigued drivers with an alert

**BLIND SPOT
 DETECTION SYSTEM*¹**

uses radar to detect vehicles in your blind spot and can give visual and audible alerts to help you avoid hazardous lane changes



Senses, alerts and helps you **STOP**

It's like having a co-pilot always on the lookout
with these advanced features.

FORWARD COLLISION-AVOIDANCE ASSIST (FCA)*1

This system is designed to detect and alert you if a potential front collision is imminent, and can also automatically apply the brakes, if necessary.

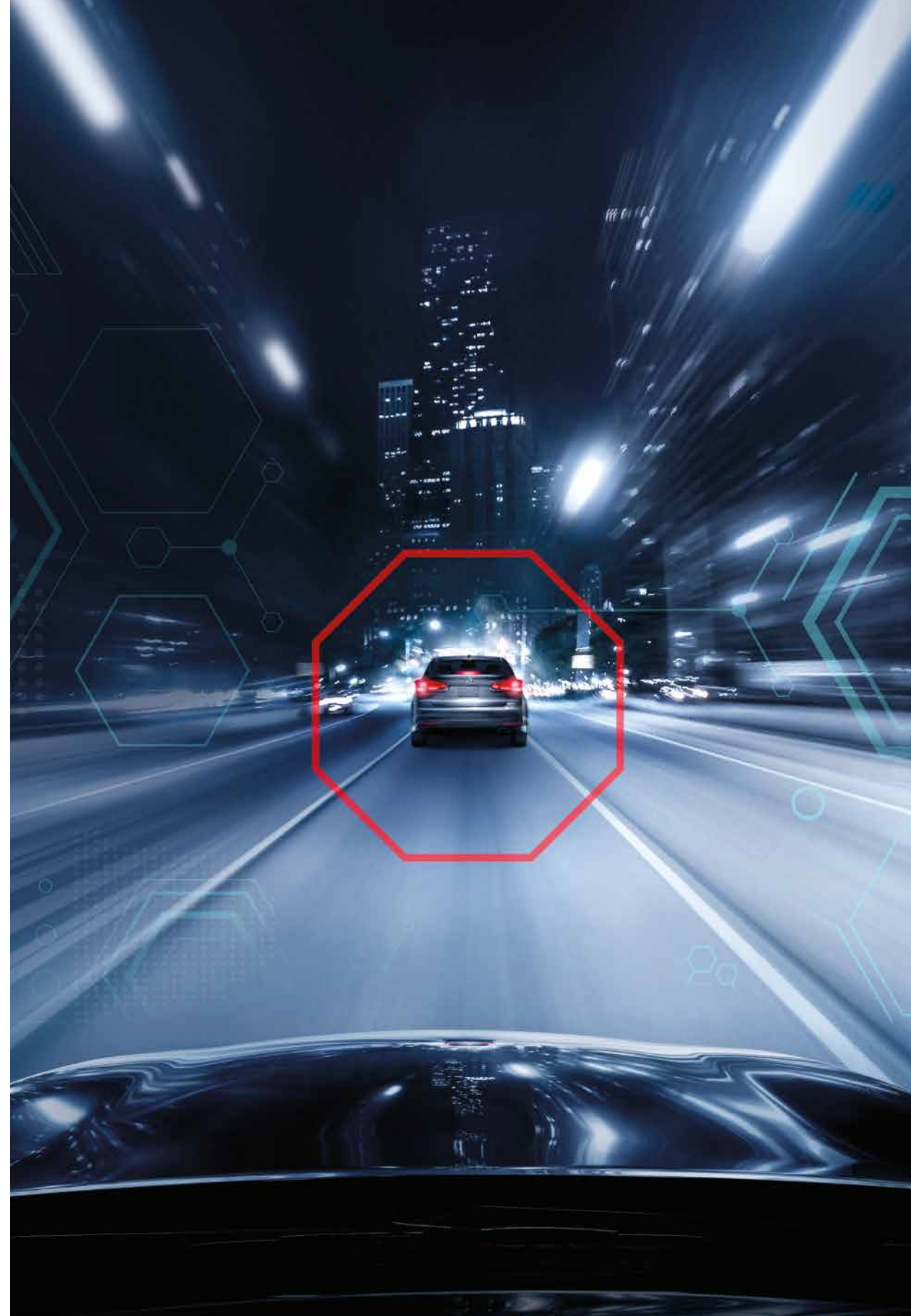
BRAKE ASSIST SYSTEM

If you suddenly slam on your brakes, it's designed to sense the urgency and apply full braking power, which can help shorten your braking distance.

ELECTRONIC BRAKE-FORCE DISTRIBUTION

Based on the vehicle's weight distribution, it helps adjust the balance of brake power accordingly.

*Available feature. See features page or visit kia.ca/sorento for full details.





Safety covered from

EVERY ANGLE

Sorento has you covered with features that help alert you to potential hazards that are behind and in front of you — as well as those heading your way.

360° CAMERA MONITORING SYSTEM*

uses cameras to provide a real-time overhead view to ease your manoeuvring in and out of parking spaces

REARVIEW CAMERA¹

is designed to automatically display the rear view on your screen when you put your vehicle in reverse

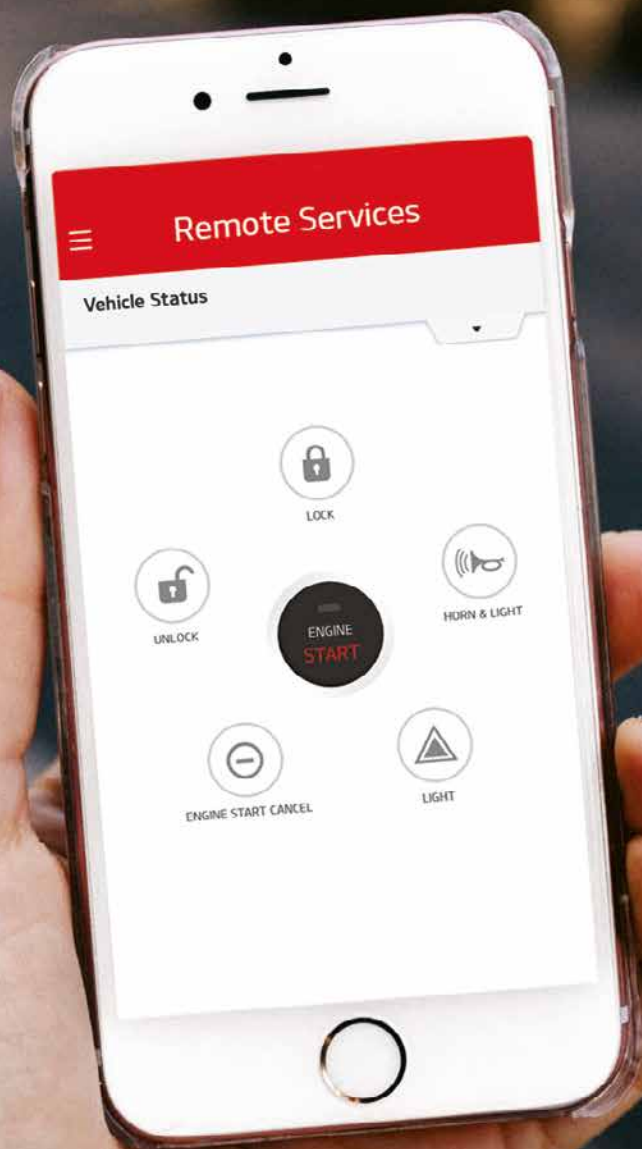
REAR CROSS TRAFFIC ALERT*

gives you visual and audible alerts to help warn of traffic coming toward you from either side while backing up

PARKING SENSORS*

give you audible alerts when you're getting too close to obstacles while parking

*Available feature. See features page or visit kia.ca/sorento for full details.



UVO[®] | Intelligence[™]

Access a world of
connected car services
from the convenience of your smartphone^{*2,4}

NOW THAT'S INTELLIGENT

REMOTE SERVICES

Start/Stop your car and set the climate control remotely from your smartphone. Other services include: Remote Door Lock/Unlock and Find My Car.

SAFETY AND SECURITY

Automatic Collision Notification sends out an emergency call automatically if you're in an accident. Enhanced Roadside Assistance and S.O.S. Emergency Assistance are both available at the touch of a button.

VEHICLE HEALTH

Monitor the status of your vehicle with Maintenance Alerts, Monthly Vehicle Health Reports and On-Demand Diagnostics.

LOCATION-BASED SERVICES

Use voice-activated Destination Search to find an address, or points of interest by category, quickly and easily.

*Available feature. See features page or visit kia.ca/sorento for full details.

Experience the joy of
COMPLETE CONTROL

Sorento invites you to experience a more connected form of driving with features that make your life on the road more comfortable and convenient.

8" MULTIMEDIA INTERFACE*³
 with integrated touch screen navigation

HARMAN KARDON PREMIUM AUDIO*⁹
 delivers crystal clear and balanced sound

WIRELESS CHARGING*²
 keeps your smartphone fully charged while you're on the road

APPLE® AND ANDROID™ SMARTPHONE INTEGRATION*^{2,7,8}
 keep you connected through voice commands

SMART KEY*
 lets you unlock and start your vehicle with your key in your pocket

SMART POWER LIFTGATE*
 can automatically open when it senses your Smart Key

*Available feature. See features page or visit kia.ca/sorento for full details. International model shown.



AIR-COOLED SEATS*
help you stay cool with three fan levels

HEATED SEATS AND STEERING WHEEL*
keep you toasty warm during Canadian winters

PREMIUM NAPPA LEATHER*
perfectly complements the deeply contoured seating

POWER ADJUSTABLE SEATS*
lets you customize the seat base and back positioning

DRIVER'S SEAT MEMORY SYSTEM*
remembers two individual seat-adjustment preferences

PANORAMIC SUNROOF*
for a brighter, airier cabin

It looks great on the inside
**AND ADAPTS
EVEN BETTER**

Sorento's welcoming interior offers genuine comfort for up to seven, and makes room for a substantial amount of cargo, thanks to the available fold-flat third-row seats.

*Available feature. See features page or visit kia.ca/sorento for full details. International model shown.

ADVANCED AIRBAG SYSTEM

includes dual front, front seat-mounted side and side curtain airbags

HIGH-STRENGTH STEEL

helps absorb impact energy in certain collisions to protect the passenger compartment

ELECTRONIC STABILITY CONTROL (ESC)

monitors throttle, brake and steering inputs, and restores stability if the responses are out of sync

VEHICLE STABILITY MANAGEMENT (VSM)

controls brake force, engine torque and steering torque to improve stability on slippery surfaces or when cornering

DYNAMIC HEADLIGHTS*

adjust headlight angle based on steering input to illuminate the curve ahead

Enhanced protection for more **PEACE OF MIND**

Advanced sensor systems, strategically placed airbags and breakthroughs in material design that have led to stronger body construction are just a few of the ways Kia never stops working to help maximize your protection.



*Available feature. See features page or visit kia.ca/sorento for full details.



Now it's time to ZERO IN

Which Sorento is right for you?

LX FWD

EXTERIOR	SAFETY	TECHNOLOGY	COMFORT
<ul style="list-style-type: none"> • 17" alloy wheels • P235/65R17 tires • Temporary spare tire • Automatic headlights • Projection headlights • LED positioning lights • Headlight escort function • Solar glass • Privacy tint glass • Heated sideview mirrors • Chrome door handles • Rear spoiler 	<ul style="list-style-type: none"> • 6 airbags (dual advanced front, dual side curtain, dual front side seat) • Electronic stability control (ESC) • Vehicle stability management (VSM) • 4-wheel anti-lock braking system (ABS) • Hill-assist control (HAC) • Low washer fluid warning indicator • Rearview camera¹ 	<ul style="list-style-type: none"> • Air conditioning • 7" Display audio • AM/FM/MP3 radio • AUX audio input port • USB audio input and charging port • Bluetooth® hands-free cell phone connectivity^{2,6} • Apple CarPlay® and Android Auto™ smartphone integration^{2,7,8} • Steering wheel-mounted audio controls • Cruise control • Drive Mode Select • Remote keyless entry 	<ul style="list-style-type: none"> • Cloth seats • Heated front seats • Height adjustable driver's seat • 40:20:40 split-folding 2nd row seats • Tilt and telescopic steering wheel • Heated steering wheel • Leather-wrapped steering wheel • Leather-wrapped gear shift knob

LX adds to or upgrades from LX FWD

EXTERIOR	SAFETY	TECHNOLOGY
<ul style="list-style-type: none"> • Roof rails 	<ul style="list-style-type: none"> • All-wheel drive (AWD) 	<ul style="list-style-type: none"> • Wireless phone charger² • Smart key with push-button start

LX V6* adds to or upgrades from LX

EXTERIOR	TECHNOLOGY	COMFORT
<ul style="list-style-type: none"> • Sound-reducing windshield • Sideview mirror signal repeaters • Fog lights • Trailer lighting pre-wiring 	<ul style="list-style-type: none"> • 8-speed Sportmatic automatic transmission • Dual-zone automatic climate control • Automatic defog system • Rear climate ventilation • AM/FM/MP3/satellite radio⁵ • UVO Intelligence™ connected car services^{2,4} • Auto-dimming rearview mirror 	<ul style="list-style-type: none"> • 7-passenger seating • 50:50 split-folding 3rd row seats • 8-way power adjustable driver's seat • 2-way driver's seat lumbar support

EX 2.4L[‡] adds to or upgrades from LX

EXTERIOR	COMFORT
<ul style="list-style-type: none"> • Gloss grille • Fog lights 	<ul style="list-style-type: none"> • Leather seats • 7-passenger seating • 50:50 split-folding 3rd row seats • 8-way power adjustable driver's seat • 2-way driver's seat lumbar support

EX* adds to or upgrades from LX V6

EXTERIOR	SAFETY	TECHNOLOGY	COMFORT
<ul style="list-style-type: none"> • 18" machined-finish alloy wheels • P235/60R18 tires • Gloss grille 	<ul style="list-style-type: none"> • Blind spot detection system (BSD)¹ • Rear cross traffic alert (RCTA)¹ 	<ul style="list-style-type: none"> • 110V power inverter (household outlet) • Supervision LCD/TFT instrument cluster • Express up/down windows • Obstacle-detecting windows 	<ul style="list-style-type: none"> • Leather seats • 4-way driver's seat lumbar support • Driver's seat memory function

EX PREMIUM* adds to or upgrades from EX

EXTERIOR	SAFETY	TECHNOLOGY	COMFORT
<ul style="list-style-type: none"> • Panoramic sunroof • Automatic power folding sideview mirrors 	<ul style="list-style-type: none"> • Front parking sensors¹ • Rear parking sensors¹ 	<ul style="list-style-type: none"> • Smart power liftgate • LED interior lighting 	<ul style="list-style-type: none"> • 8-way power adjustable passenger seat • Integrated manual rear door sunshades

SX* adds to or upgrades from EX PREMIUM

EXTERIOR	TECHNOLOGY	COMFORT
<ul style="list-style-type: none"> • 19" alloy wheels • P235/55R19 tires • Dynamic directionally adaptive headlights • LED headlights • LED fog lights • LED taillights (bar type) • Sound-reducing front side door glass • Stainless steel skid plates • Chrome grille 	<ul style="list-style-type: none"> • 8" multimedia interface with integrated navigation³ • Harman Kardon® premium audio system⁹ 	<ul style="list-style-type: none"> • Premium leather seats • Heated 2nd row seats • Air-cooled front seats • Stainless steel door scuff plates

SXL* adds to or upgrades from SX

EXTERIOR	SAFETY	TECHNOLOGY	COMFORT
<ul style="list-style-type: none"> • 19" chrome alloy wheels • Smart high beam assist • Chrome side sill accents 	<ul style="list-style-type: none"> • Lane keeping assist system (LKAS)¹ • Driver attention alert system (DAA) • Forward collision-avoidance assist (FCA)¹ • 360° camera monitoring system¹ 	<ul style="list-style-type: none"> • Advanced smart cruise control (ASCC)¹ • Electronic parking brake 	<ul style="list-style-type: none"> • Premium Nappa leather seats

[‡] Comes equipped with all-wheel drive.

* Comes equipped with 3.3L V6 engine and all-wheel drive.

What's under THE HOOD



MECHANICAL

	LX FWD, LX, EX 2.4L	LX V6, EX, SX, SXL
Engine type	2.4L 4-cylinder	3.3L V6
Horsepower	185 hp @ 6,000 rpm	290 hp @ 6,400 rpm
Torque	178 lb.ft. @ 4,000 rpm	252 lb.ft. @ 5,200 rpm
Transmission	6-speed Sportmatic automatic	8-speed Sportmatic automatic
Drive type	LX FWD: Front wheel drive (FWD) LX: Dynamax™ all-wheel drive (AWD) EX 2.4L: Dynamax™ all-wheel drive (AWD)	Dynamax™ all-wheel drive (AWD)
Recommended fuel	Regular unleaded	Regular unleaded



MEASUREMENTS

	LX FWD, LX, EX 2.4L	LX V6, EX, SX, SXL
Towing capacity ¹⁰	2,000 lb	5,000 lb
Fuel tank capacity	71 L	71 L
Cargo capacity (behind 1 st row)	LX FWD: 2,082 L (73.5 cu. ft.) LX: 2,082 L (73.5 cu. ft.) EX 2.4L: 2,066 L (73.0 cu. ft.)	2,066 L (73.0 cu. ft.)
Cargo capacity (behind 2 nd row)	LX FWD: 1,099 L (38.8 cu. ft.) LX: 1,099 L (38.8 cu. ft.) EX 2.4L: 1,077 L (38.0 cu. ft.)	1,077 L (38.0 cu. ft.)
Cargo capacity (behind 3 rd row)	EX 2.4L: 320 L (11.3 cu. ft.)	320 L (11.3 cu. ft.)



FUEL CONSUMPTION

	LX FWD, LX, EX 2.4L	LX V6, EX, SX, SXL
City	LX FWD: 10.7 L/100km LX: 11.2 L/100km EX 2.4L: 11.2 L/100km	12.5 L/100km
Highway	LX FWD: 8.2 L/100km LX: 9.0 L/100km EX 2.4L: 9.0 L/100km	9.7 L/100km

Please visit kia.ca/sorento for full vehicle specifications.

Pick your perfect COLOUR



Snow White Pearl



Titanium



Ebony Black



Graphite



Blaze Blue

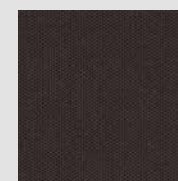


Dragon Brown

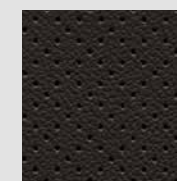


Passion Red

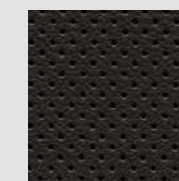
SEATING



Black cloth



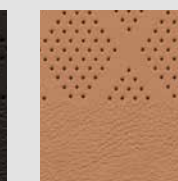
Black leather



Premium black leather



Premium black Nappa leather



Premium brown Nappa leather

*Some seating and paint configurations may be limited. Visit kia.ca/sorento for full details.

WHEELS



17" alloy wheels



18" machined-finish alloy wheels



19" alloy wheels



19" chrome alloy wheels

Let's get PERSONAL

Genuine Kia Accessories are built to fit right,
work right and look great



Cargo screen



Side steps



Sport visors



Roof cargo box

Accessory wheels



*Available accessories may vary. See Dealer for details. Images shown for illustration purposes only.



REWARD yourself

**Kia Member Rewards is an exclusive
rewards program for Kia customers.**

Receive Kia Canada Points towards the purchase
of a new Kia vehicle and earn Dealer Points to
redeem on service, parts and accessories.

See your Kia Dealer to join or visit rewards.kia.ca
for full details. Certain restrictions apply.

One of the best WARRANTIES in the business*



**5-year/
100,000 km**

Worry-free comprehensive
warranty



**5-year/
100,000 km**

Limited powertrain
warranty



**5-year/
unlimited km**

24-hour roadside
assistance

*The Kia 5-year/100,000-km warranty includes various warranties and roadside assistance.
Some restrictions apply. For more information call us at 1-877-542-2886 or visit to kia.ca.

1. Please note that your vehicle may not be equipped with all features described. This also applies to safety-related systems and functions. None of the features we describe are intended to replace the driver's responsibility to exercise due care while driving and are not a substitute for safe driving practices. Some features may have technological limitations. For additional information regarding the various features, including their limitations and restrictions, please refer to your vehicle's Owner's Manual. 2. Compatible smartphone required. Data rates may apply, please check with your wireless service provider. For wireless charging, certain smartphones may require a wireless charging-compatible case. 3. When equipped with the navigation system, French voice commands may be limited. 4. UVO Intelligence only available on select models and trims. Specific functionality may vary between models and trims. Destination Search is only available on vehicles with a navigation head unit. Certain functions are only accessible on the smartphone app and/or customer web portal and/or in-vehicle head unit. Service is free for the first five years from the day the vehicle was first registered. Monthly subscription may be applicable after the free period. Please consult your dealer for details. 5. SiriusXM satellite radio service includes a 3 month trial and is available in the 10 provinces and three territories of Canada, and the 48 contiguous states of the U.S. Monthly subscription sold separately after three trial months. 6. The Bluetooth word mark and logos are registered trademarks owned by Bluetooth SIG, Inc. 7. Apple, the Apple logo, CarPlay, and iPhone are trademarks of Apple Inc., registered in the US and other countries. App Store is a service mark of Apple Inc. 8. Google, Google Play, Google Maps, and Android Auto are trademarks of Google Inc. 9. Harman Kardon and Infinity are registered trademarks of Harman International Industries, Inc. Lexicon, the Lexicon logo, Logic 7 and the Logic 7 logo are registered trademarks of Lexicon, Inc., a Harman International company. All rights reserved. 10. When properly equipped. Do not exceed any weight ratings and follow all towing instructions in your Owner's Manual.

All information contained herein was accurate and correct at the time of printing. Kia Canada Inc. reserves the right to make changes at any time without notice, and without any obligations as to colours, materials, specifications, features, accessories, packages, models and any applicable programs. Some vehicles shown may include optional equipment or may not be exactly as shown. Kia Canada Inc., by the publication and dissemination of this material, does not create any warranties, either expressed or implied, to any Kia products. See your Kia dealer or website for further details. Reproduction of the contents of this material without the expressed written approval of Kia Canada Inc. is prohibited. © Copyright 2018 Kia Canada Inc.



| Want to learn even more about Sorento? We've got all the details for you at

| kia.ca



Proud Partner

As the official automotive partner of Special Olympics Canada, Kia Canada is proud to be taking a hands-on role in helping to spread the message of acceptance and inclusion - as well as providing funds and transportation needs to support the daily and competitive sport programs that serve more than 42,000 children, youth and adults with an intellectual disability in communities all across Canada. Please visit SpecialOlympics.ca to learn more about this inspiring movement and how you can volunteer and/or donate to this very special cause.



facebook.com/kiacanada



twitter.com/kiacanada



youtube.com/kiacanada