

D
O
D
G
E

DART // 2016





2016 DODGE DART

//// DART GT SHOWN IN REDLINE PEARL.

MOST AWARD-WINNING AND TECHNOLOGICALLY ADVANCED VEHICLE IN ITS CLASS¹

Unlike its compact segment competitors, Dart offers more technology features than any other vehicle in its class. Born from the same bloodline as Dodge Challenger and Charger, Dart has authentic performance DNA coursing through its powertrain and race-inspired design cues. With features like the available Radio 8.4 multimedia centre that boasts the largest touchscreen in its class,^{1*} it's loaded with plenty of tech. Dart delivers features not typically standard on other compact vehicles: unsurpassed¹ 10 air bags²; standard 4-wheel disc antilock brakes, standard projector headlamps and LED stop-turn taillamps. Put yourself in the driver's seat and enjoy a ride that leaves a lasting impression.

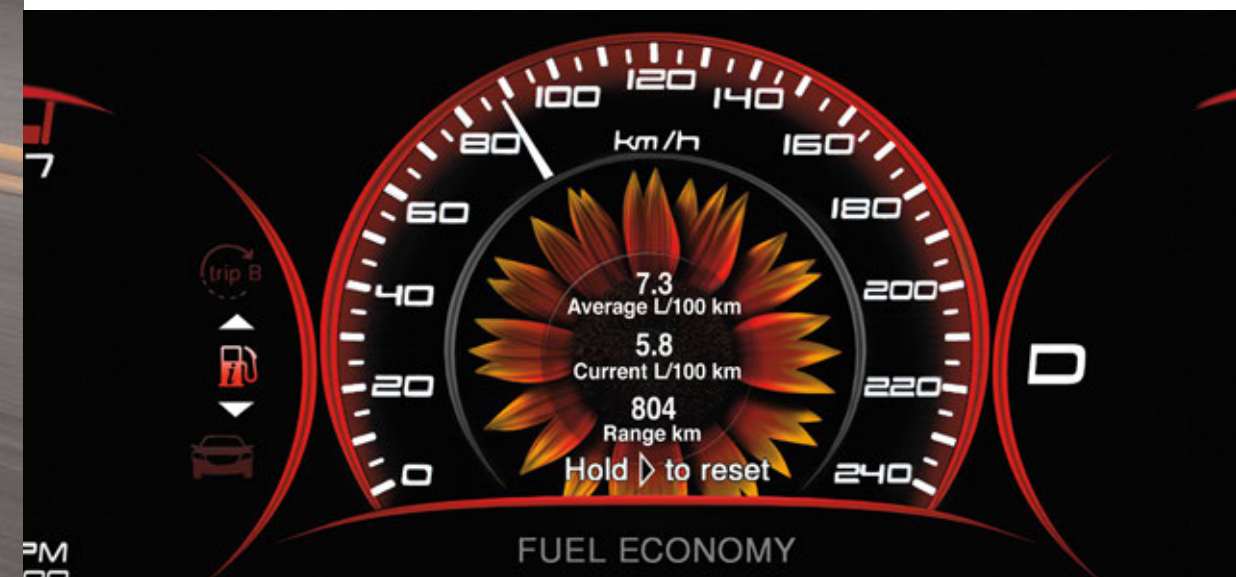
*A note about this brochure: all disclaimers and disclosures can be found on page 19.



BOLD AT ANY ANGLE



Dart GT shown in Go Mango.



SEGMENT-LEADING¹

INTERIOR: ROOMINESS

WORLD-CLASS DESIGN. Dart isn't just engineered to perform on the road, it's engineered to give its all to its driver and passengers. Superior design created an interior with segment-leading¹ levels of roominess that can be compared to that of a mid-size vehicle. A standard rear folding seatback gives weekend warriors the space they need for their oversized gear. The available 60/40 split-folding rear seatback with trunk pass-through adds to Dart's already versatile space. Even the glove box provides copious space with enough room to secure a laptop or tablet. The bottom line — Dart has serious space for you, your friends and everything you need for a good time.

Choose between premium cloth or supple leather-faced seats with striking accent stitching. Either way, soft-touch materials are used throughout. Opt for features like the heated steering wheel, dual-zone automatic temperature control, ambient lighting and heated front seats that let you create the perfect atmosphere.

The centre console is like an entertainment hub with available USB and auxiliary power outlets. The saddle cubbies on the sides are perfect for all your handheld electronics.



Dart Limited interior with Nappa leather-faced seats in Ceramic White with perforated inserts and Light Tungsten accent stitching.



Dart GT interior shown.

AS EFFICIENT AS 5.8 L/100 KM HIGHWAY³

OR UP TO 184 HORSEPOWER

HIGH-PERFORMANCE BIRTHRIGHT

2.0L TIGERSHARK™ VVT I-4 160 HP 148 LB-FT // DOHC 16-valve Variable Valve Timing (VVT). This engine is tuned for impressive low- and mid-range torque for greater drivability and overall fuel efficiency.

1.4L INTERCOOLED TURBO I-4 WITH MULTIAIR® 160 HP 184 LB-FT // SOHC 16-valve. This turbo kicks out 160 horsepower and 184 lb-ft of torque at 2,500–4,000 rpm. With 114 horsepower per litre, it offers the ultimate combination of power and fuel efficiency.

2.4L TIGERSHARK I-4 WITH MULTIAIR 184 HP 174 LB-FT // DOHC 16-valve. This efficient and powerful engine is the result of superior craftsmanship and enhanced MultiAir technology.

SMOOTH-SHIFTING TRANSMISSION // Dart's six-speed transmission lineup kicks in just as much capability as its engines. Options include a highly advanced, close-ratio manual or a PowerTech automatic that can be mated to the 2.0-litre or 2.4-litre engines. Or choose an advanced six-speed Dual Dry Clutch Transmission (DDCT) with Auto/Stick™ on the 1.4-litre Turbo.

Dart GT's standard sport-tuned suspension system corners more tightly at higher speeds while frequency-dampening shock absorbers provide highly responsive control as well as a smooth ride.



/// DART GT SHOWN IN BRIGHT WHITE.

BRILLIANT CRAFTSMANSHIP

AN EXTERIOR AS POTENT AS ITS PERFORMANCE



////// LIMITED

If you're looking for a ride with more luxury, check out Dart Limited. Bright grille and door handles, projector fog lamps and 17-inch Satin Silver aluminum wheels give this vehicle its polished good looks. Keyless Enter 'n Go™ lets you unlock Dart without even taking the keys out of your pocket or purse, and push-button start brings this beauty's engine to life. The interior is filled with must-have amenities like Nappa leather-faced seating, heated front seats, seven-inch customizable in-cluster display centre and a heated leather-wrapped steering wheel with cruise and audio controls. The standard Radio 8.4 NAV multimedia centre, with its largest-in-class¹ touchscreen, features Garmin® navigation⁴ and hands-free communication with Bluetooth® streaming audio.⁵

////// GT

Two little letters following the Dart moniker stand for something big — big on performance, big on style, big on value. The Dart GT ensures you're well-equipped to make the most of your every day by providing a more enhanced driving experience every way you turn, shift or look. Performance steering, unique engine calibration and transmission ratio, and a sport suspension with frequency-sensing damping shocks provide added driving dynamics. Its racy looks come from an available Sport hood, Black front fascia accents, Black headlamp surrounds, Hyper Black front grille, 18-inch Hyper Black wheels and dual exhaust.

The Black and Ruby Red Nappa leather-faced seating, Radio 8.4 multimedia centre including hands-free communication with Bluetooth® streaming audio⁵ and the seven-inch customizable in-cluster display centre feed your need for technology and comfort.

SEVEN-INCH CUSTOMIZABLE IN-CLUSTER DISPLAY CENTRE



////// Track your current and average fuel economy.



////// When in Reverse, the available Park-Sense® Rear Park Assist⁶ System detects the presence of objects in the back-up pathway.



////// View available navigation⁴ directions from the centre of your cluster.



////// Available Blind-Spot Monitoring with Rear Cross-Path Detection⁶ continually monitors rear blind zones on either side of the vehicle.



8.4-INCH TOUCHSCREEN — LARGEST IN ITS CLASS^{1A}

Turn up the tunes, phone a friend and get directions all from available Uconnect® offerings. The award-winning 8.4-inch touchscreen multimedia centre is the largest in its class¹ and features easy-to-navigate icons for radio controls, personal devices such as an iPod®, or climate controls, and features such as SiriusXM satellite radio with one-year subscription,⁷ navigation⁴ and hands-free communication with Bluetooth® streaming audio.⁵

The Radio 8.4 multimedia centre is further set apart by the Ruby Red-illuminated floating island bezel which surrounds the gauge cluster and touchscreen. Bring along your own tunes via available wireless Bluetooth streaming audio or remote USB port with iPod mobile device control. The USB port can also charge your compatible devices. Keep your hands on the available heated steering wheel with wheel-mounted controls and voice command⁵. Use voice commands⁵ for features like phone operation, radio/CD functions and access to your digital media players. Optional Garmin® navigation⁴ provides turn-by-turn directions, lane guidance and local points of interest.



uconnect

55+

STANDARD / AVAILABLE

SAFETY & SECURITY FEATURES

1 //// UNSURPASSED¹ 10 STANDARD AIR BAGS²
Dual-stage, adaptive-venting frontal air bags, front seat-mounted pelvic and thorax side air bags, rear-seat side-mounted pelvic air bags, front and rear side-curtain air bags, and driver and front-passenger knee bolster air bags are included.

2 //// PARK-SENSE[®] REAR PARK ASSIST[®]
When the vehicle is in Reverse, the sensors detect the presence of objects in the back-up pathway and provide an audible and visual warning.

3 //// PARKVIEW[®] REAR BACK-UP CAMERA[®]
Displays an accurate visual reference of what is behind your vehicle when it's in Reverse.

4 //// READY ALERT BRAKING (RAB).
The system anticipates situations when the driver may initiate an emergency brake stop and uses the Electronic Stability Control (ESC)[®] pump to precharge the brake system in order to decrease the time required for full brake application.

5 //// BLIND-SPOT MONITORING (BSM) WITH REAR CROSS-PATH DETECTION[®]
While driving forward, BSM[®] continually monitors blind zones on either side of the vehicle. When an object is detected, an indicator light illuminates in the appropriate exterior mirror, and an audible notification sounds. When in Reverse, rear sensors warn through a chime if cross-traffic approaches the vehicle.

6 //// AUTOMATIC HIGH-BEAM HEADLAMP CONTROL.
This system automatically switches headlamps from high to low beam and back again when oncoming headlamps, forward-lighting elements or taillamps from the vehicle ahead of yours are sensed. Nighttime driving is also assisted by providing the maximum amount of light possible for any driving scenario.

7 //// ELECTRONIC STABILITY CONTROL (ESC)[®]
Designed to assist drivers in maintaining control of their vehicle during extreme steering manoeuvres. ESC senses when a vehicle is starting to spin (oversteer) or plow (understeer), and attempts to correct the vehicle's course by automatically controlling the throttle and applying the brakes at individual wheels.





DART SE

POWERTRAIN

- 2.0L Tigershark™ DOHC I-4 with 6-speed automatic
- 2.0L Tigershark DOHC I-4 with 6-speed manual

STANDARD EQUIPMENT

INTERIOR AMENITIES

- 12-volt power outlet in instrument panel
- Air filtering
- Media Centre:
 - Radio 200 AM/FM/CD with 4 speakers
 - Auxiliary input jack
- Outside temperature display
- Passenger assist handles
- Power windows, driver's one-touch down
- Rearview day/night mirror
- Satin Silver interior accents
- Seating:
 - Sport cloth seats, manual 6-way driver and front-passenger seats
 - Driver's height-adjustable seat
 - Rear folding seat
- Speed-sensitive power locks
- Storage:
 - Extra-large glove box
 - Floor console with covered storage
 - 2 front cup holders
- Tilt/telescoping steering column

EXTERIOR FEATURES

- Bifunctional halogen projector headlamps with chrome surrounds and headlamps-off time delay
- Black door handles
- Body-colour crosshair grille with body-colour surround
- Body-colour power mirrors
- LED stop/turn taillamps
- Rear window defroster

EXTERIOR FEATURES (cont.)

- Solar-control glass
- Wheels and Tires:
 - 16-inch steel wheel cover
 - P205/55R16 all-season tires

SAFETY & SECURITY

- 10 air bags²
- Child Seat Anchor System (LATCH)
- Electronic Stability Control³ with Hill Start Assist, Brake-Lock Differential, All-Speed Traction Control, Electronic Roll Mitigation and Trailer Sway Control
- Engine block heater
- Four-wheel disc antilock brakes with Brake Assist
- Keyless entry with panic alarm
- Reactive front head restraints⁹
- Sentry Key® anti-theft engine immobilizer
- Tire pressure monitoring warning lamp
- Tire service kit

OPTIONAL EQUIPMENT

- Compact Spare Tire
- Driver Convenience Group
- SE Rallye Package



DART SXT

POWERTRAIN

- 2.4L Tigershark MultiAir® I-4 with 6-speed automatic
- 2.4L Tigershark MultiAir I-4 with 6-speed manual

ENHANCEMENTS vs. SE

- 12-volt power outlet in console
- 16-inch Tech Silver aluminum wheels
- Air conditioning with micron filter
- Electronic Vehicle Information Centre (EVIC) with trip computer
- Exterior:
 - Active grille shutters (automatic only)
 - Automatic headlamps with black headlamp surrounds
 - Black crosshair grille with body-colour surround
 - Body-colour door handles
 - LED racetrack taillamps
 - SXT badge
 - Underbody aerodynamic treatment (automatic only)
- Media Centre:
 - 6 speakers
 - Hands-free communication with Bluetooth® streaming audio⁵
- Rearview mirror with microphone
- Satin Silver shift knob
- Seating:
 - 60/40 split-folding rear seat with trunk pass-through
 - Premium cloth seats
- Security alarm
- Steering wheel-mounted audio and cruise controls

- Storage:
 - Floor console with fore/aft sliding armrest
 - Front seatback map pockets
 - Overhead console with sunglasses holder
 - Rear-seat armrest with storage and cup holders
- Sun visors with illuminated vanity mirrors
- Tire Pressure Monitoring Display

OPTIONAL EQUIPMENT

- 8.4-inch Uconnect® Touchscreen Group
- Blacktop Package
- Cold Weather Group
- Compact Spare Tire
- Radio 8.4 NAV Multimedia Centre
- Rallye Appearance Group
- Single-disc Remote CD Player
- SiriusXM Satellite Radio with One-year Subscription⁷
- Sport Appearance Hood
- Sun & Sound Group



DART AERO

POWERTRAIN

- 1.4L MultiAir 16V I-4 Turbo with 6-speed automatic dual dry clutch
- 1.4L MultiAir 16V I-4 Turbo with 6-speed manual

ENHANCEMENTS vs. SE

- 7-inch full-colour customizable in-cluster display centre
- 16-inch Tech Silver aluminum wheels
- Air conditioning with micron filter
- EVIC with trip computer
- Exterior:
 - Active grille shutters
 - Aero badge
 - Automatic headlamps
 - Body-colour door handles
 - Bright crosshair grille with body-colour surround
 - LED racetrack taillamps
 - Underbody aerodynamic treatment
- Illuminated floating island bezel
- Leather-wrapped steering wheel with audio and cruise controls
- Media Centre:
 - Radio 8.4 multimedia centre with 8.4-inch touchscreen display (CD player optional)
 - 6 speakers
 - SiriusXM satellite radio with one-year subscription⁷
 - Hands-free communication with Bluetooth streaming audio⁵
 - iPod® control
 - Remote USB port
- ParkView® Rear Back-Up Camera⁶
- Rearview mirror with microphone

OPTIONAL EQUIPMENT

- Radio 8.4 NAV Multimedia Centre
- Single-disc Remote CD Player



DART GT

POWERTRAIN

- 2.4L Tigershark™ MultiAir® I-4 with 6-speed automatic
- 2.4L Tigershark MultiAir I-4 with 6-speed manual

ENHANCEMENTS vs. SXT

- 7-inch full-colour customizable in-cluster display centre
- Air conditioning with dual-zone automatic temperature control
- Ambient LED interior lighting
- Auto-dimming rearview mirror with microphone
- Body-colour power, heated exterior mirrors, with supplemental turn signals and courtesy lamps
- Compass gauge
- Exterior:
 - Dual bright exhaust tips
 - GT badge
 - Hyper Black crosshair grille with black surround
 - Projector fog lamps
 - Sport suspension
- Glove box lamp
- Illuminated floating island bezel
- Keyless Enter 'n Go™ with proximity entry and push-button start
- Leather-wrapped heated steering wheel
- Leather-wrapped shift knob (with automatic transmission)
- Media Centre:
 - Radio 8.4 with 8.4-inch touchscreen display (CD player optional)
 - SiriusXM satellite radio with one-year subscription⁷
 - iPod® control
 - Remote USB port
- ParkView® Rear Back-Up Camera⁶
- Performance transmission gear ratio
- Power windows, front one-touch up and down
- Rear stabilizer bar
- Remote start system (with automatic transmission)
- Seating:
 - Unique Nappa leather-faced seats with perforated inserts and accent stitching
 - 10-way power driver's seat including 4-way lumbar adjust
 - Heated front seats
- Soft-touch instrument panel
- Unique engine calibration and pedal map
- Universal garage door opener¹⁰
- Wheels and Tires:
 - 18-inch Hyper Black aluminum wheels
 - P225/40R18XL all-season tires

OPTIONAL EQUIPMENT

- Blacktop Package (late availability)
- Compact Spare Tire
- Radio 8.4 NAV Multimedia Centre
- Single-disc Remote CD Player
- Sport Appearance Hood
- Sun & Sound Group
- Technology Group



DART LIMITED

POWERTRAIN

- 2.4L Tigershark MultiAir I-4 with 6-speed automatic

ENHANCEMENTS vs. SXT

- 7-inch full-colour customizable in-cluster display centre
- Air conditioning with dual-zone automatic temperature control
- Ambient LED interior lighting
- Auto-dimming rearview mirror with microphone
- Body-colour power, heated exterior mirrors, with supplemental turn signals and courtesy lamps
- Compass gauge
- Exterior:
 - Bright crosshair grille with body-colour surround
 - Bright door handles
 - Chrome headlamp surround
 - Limited badge
 - Projector fog lamps
 - Touring suspension
- Glove box lamp
- Illuminated floating island bezel
- Keyless Enter 'n Go with proximity entry and push-button start
- Leather-wrapped heated steering wheel
- Leather-wrapped shift knob
- Media Centre:
 - Radio 8.4 NAV multimedia centre (CD player optional)
 - SiriusXM satellite radio with one-year subscription⁷
 - iPod control
 - Remote USB port
 - Garmin® Navigation
- ParkView Rear Back-Up Camera⁶
- Power windows, front one-touch up and down
- Rear stabilizer bar
- Remote start
- Seating:
 - Nappa leather-faced seats with perforated inserts and accent stitching
 - Power 10-way driver's seat including 4-way lumbar adjust
 - Heated front seats
- Soft-touch instrument panel
- Universal garage door opener¹⁰
- Wheels and Tires:
 - 17-inch Satin Silver aluminum wheels
 - P225/45R17 all-season tires

OPTIONAL EQUIPMENT

- 17-inch Polished Aluminum Wheels
- Compact Spare Tire
- Single-disc Remote CD Player
- Sun & Sound Group
- Technology Group

PACKAGES

8.4-INCH UCONNECT® TOUCHSCREEN GROUP

- 8.4-inch touchscreen display
- Glove box lamp
- Illuminated floating island bezel
- iPod control
- ParkView Rear Back-Up Camera⁶
- Radio 8.4 multimedia centre
- Remote USB port

BLACKTOP PACKAGE

- 18-inch Gloss Black aluminum wheels
- Gloss Black crosshair grille
- Gloss Black fog lamp spear and bezels
- Gloss Black exterior mirrors
- P225/40R18XL all-season tires

COLD WEATHER GROUP

- 205/55R16 all-season tires
- Body-colour power, heated mirrors
- Heated front seats
- Remote start system (automatic)

DRIVER CONVENIENCE GROUP

- Hands-free communication with Bluetooth® streaming audio⁵
- Rearview mirror with microphone
- Remote USB port
- Steering wheel-mounted audio and cruise controls

RALLYE APPEARANCE GROUP

- 17-inch Granite Crystal aluminum wheels
- Active grille shutters (manual)
- Black crosshair grille with black surround
- Dual bright exhaust tips
- Leather-wrapped shift knob (automatic)
- Leather-wrapped steering wheel
- P225/45R17 all-season tires
- Premium cloth seats with accents
- Projector fog lamps
- Rallye badge
- Rear stabilizer bar
- Touring suspension
- Underbody aerodynamic treatment (manual)

SE RALLYE PACKAGE

- 17-inch Granite Crystal aluminum wheels
- Black crosshair grille with black surround
- Black headlamp surround
- P225/45R17 all-season tires
- Touring suspension

SUN & SOUND GROUP

- 9 Alpine® speakers with subwoofer
- 506-watt amplifier
- Glove box lamp
- Illuminated floating island bezel
- iPod control
- ParkView Rear Back-Up Camera⁶
- Power sunroof
- Radio 8.4 multimedia centre
- Remote USB port

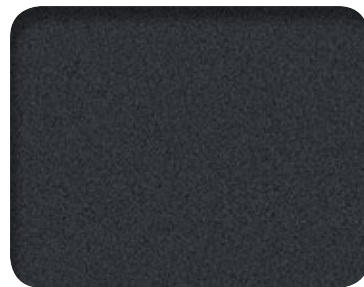
TECHNOLOGY GROUP

- Automatic high-beam headlamp control
- Blind-Spot Monitoring with Rear Cross-Path Detection⁶
- High Intensity Discharge (HID) headlamps
- Park-Sense® Rear Park Assist⁶
- Rain-sensing windshield wipers
- Security alarm

COLOUR CHOICES



REDLINE PEARL



GRANITE CRYSTAL METALLIC



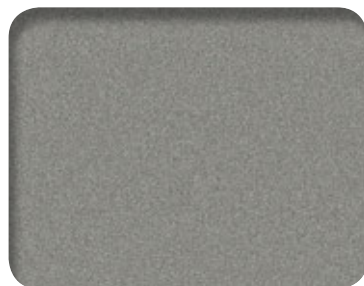
TORRED



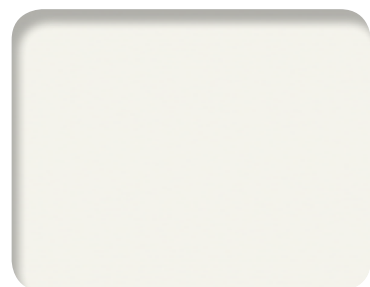
PITCH BLACK



LASER BLUE PEARL



BILLET SILVER METALLIC



BRIGHT WHITE



TRUE BLUE PEARL



GO MANGO

WHEEL CHOICES

- 1 // 16-INCH STEEL WHEEL COVER (STANDARD ON SE)
- 2 // 16-INCH TECH SILVER ALUMINUM (STANDARD ON SXT)
- 3 // 16-INCH TECH SILVER ALUMINUM (STANDARD ON AERO)
- 4 // 17-INCH GRANITE CRYSTAL ALUMINUM (INCLUDED IN RALLYE APPEARANCE GROUP ON SE AND SXT)
- 5 // 17-INCH SATIN SILVER ALUMINUM (STANDARD ON LIMITED)
- 6 // 17-INCH POLISHED ALUMINUM (OPTIONAL ON LIMITED)
- 7 // 18-INCH GLOSS BLACK ALUMINUM (INCLUDED IN BLACKTOP PACKAGE ON SXT)
- 8 // 18-INCH HYPER BLACK ALUMINUM (STANDARD ON GT)
- 9 // 18-INCH GLOSS BLACK ALUMINUM (INCLUDED IN BLACKTOP PACKAGE ON GT)



INTERIOR CHOICES



SE shown. 1



2



Optional equipment shown. 3



4 Optional equipment shown.

1 // Sport cloth with Sport mesh inserts — Black — Standard on SE and Aero

2 // Premium cloth with Sport mesh inserts — Black with Light Tungsten accent stitching — Available on SXT with Blacktop Package or Rallye Appearance Group

3 // Premium cloth with Sport mesh inserts — Light Frost with Pearl accent stitching — Standard on SXT

4 // Premium cloth with Sport mesh inserts — Black — Standard on SXT

5 // Premium cloth with Sport mesh inserts — Black/Ruby Red — Available on SXT with Blacktop Package

6 // Nappa leather-faced with perforated bolsters — Black/Ruby Red with Ruby Red accent stitching — Standard on GT

7 // Nappa leather-faced with perforated inserts — Black with Light Tungsten accent stitching — Standard on Limited

8 // Nappa leather-faced with perforated inserts — Ceramic White/Black with Light Tungsten accent stitching — Standard on Limited



Optional equipment shown. 5



6



7



8

SPECIFICATIONS

CURB WEIGHT, kg (lb)		
2.0L Tigershark I-4 DOHC Engine (automatic)	1439	(3172)
2.0L Tigershark™ I-4 DOHC Engine (manual)	1416	(3122)
1.4L MultiAir 16V I-4 Turbo Engine (automatic, dual dry clutch [DDCT])	1423	(3137)
1.4L MultiAir® 16V I-4 Turbo Engine (manual)	1398	(3081)
2.4L Tigershark MultiAir I-4 Engine (automatic)	1458	(3215)
2.4L Tigershark MultiAir I-4 Engine (manual)	1436	(3165)
GVWR, kg (lb)		
Aero	1801	(3970)
SE, SXT, Limited, GT	1944	(4285)
TOWING, kg (lb)		
Towing Capacity	454	(1000)*
EXTERIOR, mm (in)		
Wheelbase	2703	(106.4)
Overall Height	1465	(57.7)
Front Track	1568	(61.7)
Rear Track	1565	(61.6)
Overall Width, without Mirrors	1830	(72.0)
Overall Length	4672	(183.9)
Ground Clearance	113	(4.4)
INTERIOR, mm (in)		
Headroom	980	(38.6)
Headroom with Sunroof	950	(37.4)
Legroom	1071	(42.2)
Hip Room	1392	(54.8)
Shoulder Room	1477	(58.2)
1477	(58.2)	1425
1425	(56.1)	
VOLUMES & CAPACITIES		
Cargo Volume, L (cu ft)	371	(13.1)
Seating Capacity	5	
Total Interior Volume, L (cu ft)	3123	(110.3)
Fuel Tank Capacity, L (imp gal)	— GT	60 (13.2)
	— SE, SXT, Limited, Rallye	54 (11.9)
	— Aero	50 (11.0)

*Maximum ratings based on properly equipped vehicles.

For full specification details, visit dodge.ca

POWER AND FUEL ECONOMY

Based on 2015 *EnerGuide* fuel consumption ratings. Government of Canada test methods used. Your actual fuel consumption will vary based on driving habits and other factors. For *EnerGuide* information, please ask your retailer or visit the Government of Canada Web site: www.vehicles.nrcan.gc.ca

ENGINE	TRANSMISSION	HORSEPOWER	TORQUE (LB-FT)	L/100 KM (MPG)	
				CITY	HIGHWAY
2.0L Tigershark I-4 DOHC	6-speed automatic	160	148	9.9 (29)	7.0 (40)
2.0L Tigershark I-4 DOHC	6-speed manual	160	148	9.4 (30)	6.5 (43)
1.4L MultiAir 16V I-4 Turbo	6-speed DDCT automatic	160	184	8.4 (34)	5.9 (48)
1.4L MultiAir 16V I-4 Turbo	6-speed manual	160	184	8.5 (33)	5.8 (49)
2.4L Tigershark MultiAir I-4 (non GT)	6-speed automatic	184	171	10.1 (28)	6.8 (42)
2.4L Tigershark MultiAir I-4 (non GT)	6-speed manual	184	171	10.5 (27)	6.7 (42)
2.4L Tigershark MultiAir I-4 (GT)	6-speed automatic	184	171	10.6 (27)	7.5 (38)
2.4L Tigershark MultiAir I-4 (GT)	6-speed manual	184	171	10.2 (28)	7.0 (40)

MULTIMEDIA CENTRES

Radio 200

- AM/FM/CD
- Auxiliary input jack

Radio 8.4

Radio 200 features plus:

- 8.4-inch full-colour high-resolution touchscreen display
 - Glove box lamp
 - Illuminated floating island bezel
 - iPod® control
 - ParkView® Rear Back-Up Camera⁶
 - Remote USB port for charging
- Note: CD player not included.

Radio 8.4 NAV

Radio 8.4 features plus:

- Garmin® navigation⁴

ABOUT THIS CATALOGUE: Since the time of printing, some of the information you'll find in this catalogue may have been updated. Ask your retailer for details. Some of the equipment shown or described throughout this catalogue is available at extra cost. Specifications, descriptions, illustrative materials and all competitive comparisons contained herein are as accurate as known at the time this publication was approved for printing. FCA Canada Inc. reserves the right to make changes at any time without notice and without incurring obligation. For the price of the model with the equipment you desire, or verification of specifications contained herein, see your Chrysler, Jeep, Dodge, Ram and FIAT retailer. Chrysler, Jeep, Ram, Dodge, Challenger, Charger, Dart, Mopar, Park-Sense, ParkView, Sentry Key, SRT and Uconnect are registered trademarks, and Keyless Enter 'n Go and Tigershark are trademarks of FCA US LLC. FIAT and MultiAir are registered trademarks of FIAT Group Marketing & Corporate Communication S.p.A., used under licence by FCA US LLC. Garmin and the Garmin logo are registered trademarks of Garmin, Ltd. or its subsidiaries and are registered in one or more countries. Alpine and the Alpine logo are registered trademarks of Alpine Electronics, Inc. Auto/Stick is a trademark of Hurst Performance. Bluetooth is a registered trademark of Bluetooth SIG, Inc. ©2015 SiriusXM Canada Inc. SiriusXM, the SiriusXM logo, channel names and logos are trademarks of SiriusXM Radio Inc. and are used under licence. Facebook and logo are registered trademarks of Facebook, Inc. The Twitter logo is a service mark of Twitter, Inc. iPod is a registered trademark of Apple Inc. Cummins is a registered trademark of Cummins, Inc. ©2015 FCA Canada Inc. All rights reserved.

WARRANTIES: 2016 Chrysler, Jeep, Dodge and Ram vehicles are backed by a 5-year or 100,000-kilometre fully transferable Powertrain Limited Warranty* with \$0 deductible plus 24-hour roadside assistance.¹ SRT vehicles are backed by a 3-year or 60,000-kilometre fully transferable Powertrain Limited Warranty* with \$0 deductible plus 24-hour roadside assistance. Basic Warranty coverage is for 3 years or 60,000 kilometres.* Rust-through coverage on all body sheet metal is for 3 years. The Cummins Turbo Diesel engine is protected by a separate Limited Warranty, covering the engine for 5 years or 160,000 kilometres.* The EcoDiesel engine is backed by a 5-year or 100,000-kilometre fully transferable Powertrain Limited Warranty* with \$0 deductible plus 24-hour roadside assistance.¹

*Whichever comes first. Some conditions may apply. ¹The 5-Year/100,000-Kilometre Powertrain Limited Warranty does not apply to vehicles sold for certain commercial uses. See your retailer for full details.

MOPAR VEHICLE PROTECTION: FCA Canada Inc. has a vested interest in your satisfaction and owner experience with your new vehicle. Mopar Vehicle Protection offers extended service and maintenance plans to help ensure you'll enjoy your vehicle for many years down the road — for just pennies a day. For more information on comprehensive vehicle coverage, see your local Chrysler, Jeep, Dodge and Ram retailer or call 800-465-2001.

DISCLAIMERS: 1 Based on *WardsAuto* Upper Small Sedan costing under \$25,000. 2 The advanced front air bags in this vehicle are certified to the federal regulations for advanced air bags. Children 12 years old and younger should always ride buckled up in a rear seat. Infants in rear-facing child restraints should never ride in the front seat of a vehicle with a passenger front air bag. All occupants should always wear their lap and shoulder belts properly. 3 Based on 2015 *EnerGuide* fuel consumption ratings. Government of Canada test methods used. Your actual fuel consumption will vary based on driving habits and other factors. For *EnerGuide* information, please ask your retailer or visit the Government of Canada Web site: www.vehicles.nrcan.gc.ca 8.5 L/100 km (33 mpg) city and 5.8 L/100 km (49 mpg) highway on 2016 Dodge Dart Aero model with 1.4L MultiAir 16V I-4 Turbo engine and 6-speed manual transmission. Ask your retailer for *EnerGuide* information. 4 Never program while driving. GPS mapping and available 3D navigation may not be detailed or available in all areas or reflect current road regulations. 5 Driving while distracted can result in loss of vehicle control. Only use mobile phones and other devices, even with voice commands, when it is safe to do so. Voice commands of phone require a Bluetooth-compatible phone. 6 This is a driver convenience system, not a substitute for active driver involvement. The driver must remain aware of his/her surroundings and be prepared to take corrective action to avoid collisions. 7 Requires SiriusXM radio subscriptions governed by SIRIUS terms and conditions available at siriusxm.ca 8 No system can repeal the laws of physics or overcome careless driving actions. Performance is limited by available traction, which snow, ice and other conditions can affect. When the warning lamp flashes, the driver needs to use less throttle and adapt speed and driving behaviour to prevailing road conditions. 9 Always sit properly with the head restraint properly adjusted. Never place anything in front of the head restraint. 10 Not compatible with all garage door openers.

Strategic Vision's 2014 New Vehicle Experience Study[®] surveyed 38,361 Oct. — Dec. new vehicle buyers after the first 90 days of ownership. The 2014 Dodge Dart tied for leadership with another vehicle in the Small Car segment.





DODGE

DODGE.CA // 800-361-3700