

2014



300



UNBRIDLED AMBITION

Every Chrysler 300 offers over 70 safety and security features and a multitude of advanced active and passive technologies along with Best-in-Class standard V6 and V8 horsepower.^{(1)†} The award-winning 3.6L Pentastar™ VVT V6 engine paired with the standard 8-speed automatic transmission delivers impressive fuel economy of up to 6.4 L/100 km (44 mpg) highway.* All-wheel-drive models maximize fuel efficiency with a class-exclusive⁽¹⁾ active transfer case with front axle disconnect, making it the most advanced all-wheel-drive system in its class.⁽¹⁾ The Chrysler 300 lineup offers nothing less than confidence from the inside out.

*See page 18 for full details. †All disclaimers and disclosures may be found on the inside back cover.

WORLD-CLASS ARCHITECTURE AND DESIGN. The recognizable silhouette and premium content set the foundation for giving this machine your own dose of attitude. The raked-back windshield, low roof with angular body and integrated rear spoiler enhance this powerhouse's aerodynamic performance. The laminated acoustic windshield and front-door glass, body-silencing foam, fibre-acoustic wheel liners and two full-length acoustic underbody closeouts work to silence road noise. The interiors provide exceptional comfort and style, are finished with premium materials, and precision craftsmanship, all making 300 your private haven of quiet comfort.





300S shown in Radar Red Nappa leather-faced seating.

THE SPORT OF ELEGANCE

The unique dual-exhaust system on 300S results in an outstanding 300-horsepower output capability for this showstopping sporty model. The 300S interior takes cues from its exterior black and chrome attributes. It provides exceptional comfort and style with premium Nappa

leather-faced seating, black instrument panel and door trim accents, and matte carbon hydrographic finishing accents. The 10-speaker Beats Audio™ system with 506-watt amplifier means your music has been tailored to your vehicle acoustics for an exceptional sound experience.



 **beats**audio

CONVENIENCE AT THE TOUCH OF A BUTTON. Many features considered truly luxurious are standard on the 300. They include a humidity sensor with automatic temperature control (ATC) that enables an auto-defog capability, essentially eliminating the need for setting defog functions. Also included is the innovative Keyless Enter 'n Go™ Passive Entry System, which allows you to unlock the doors by pulling a door handle when the key fob is in your purse or pocket. It also enables the driver to start the vehicle with a press of the ignition start/stop button and brake pedal.



UP TO
6.4/300
 L/100KMHWY* HORSEPOWER
 44 MILES PER GALLON HWY
 3.6L PENTASTAR™ VVT V6

300S shown in new Granite Crystal Metallic.

With Best-in-Class standard V6 horsepower,⁽¹⁾ the 3.6-litre Pentastar Variable Valve Timing (VVT) V6 engine draws on advanced engine technology to achieve outstanding power — an exceptional blend of high torque, fuel efficiency and low emissions. The standard eight-speed automatic transmission with electronic shift control provides precision shifting for the 292 horsepower and 260 lb-ft of torque.

The Chrysler 300S offers more horsepower — 300 hp — with the 3.6L Pentastar VVT V6 engine. Drivers can navigate gears via an electronic shifter, or with the

steering wheel-mounted paddle shifters, providing clutchless manual shifting. In addition, Sport mode may be engaged for more aggressive driving dynamics.

5.7L HEMI® VVT V8 gives drivers an impressive fuel economy rating of up to 7.8 L/100 km (36 mpg) highway* with its FuelSaver Multi-Displacement System (MDS) technology that allows the engine to seamlessly switch from eight cylinders to four while cruising — creating the perfect formula of power, value and responsibility. This powerhouse delivers a stunning 363 horsepower and 394 lb-ft of torque.

*See page 18 for full details.



SOME STATEMENTS ARE MADE; OTHERS ARE BUILT. The 300C Luxury Series incorporates Poltrona Frau Foligno leather on the door uppers, instrument panel, cluster brow and centre-console side panels.

The perforated Nappa leather-faced seats are accented by a premium interior with matte wood finishes. Platinum chrome adorns the 300C badge, as well as the mesh grille and surround, door handles, mirrors and front/rear fascia accents — bringing distinctive luster to this edition's exterior. 20-inch aluminum wheels with polished face and Tech Silver pockets top off this style machine. The steering wheel-mounted paddle shifters, Sport mode touring suspension and optional 5.7L HEMI® V8 engine with FuelSaver MDS technology anchor the power and performance.

OFFERS 70 ACTIVE AND PASSIVE SAFETY AND SECURITY FEATURES



ADAPTIVE CRUISE CONTROL (ACC).⁽²⁾ This available system uses a radar sensor mounted at the front of the 300 to detect vehicles in its path. If the lane ahead is clear, the cruise control speed you set will be maintained. When slower traffic is detected, ACC automatically adjusts your speed to maintain the preset distance between you and the vehicle in front of you.

FORWARD COLLISION WARNING (FCW).⁽²⁾ This available feature is included with ACC and provides audible and visual warnings if the vehicle is approaching an object too fast, alerting the driver that corrective action must be taken.

ADAPTIVE FORWARD LIGHTING. This available system automatically adjusts headlamp direction for improved nighttime driving visibility. It computes your speed and steering wheel angle to determine headlamp projection from straight ahead to 7° inward or 18° outward.

PARKVIEW® REAR BACK-UP CAMERA.⁽³⁾ When driving in Reverse, ParkView provides a wide-angle view of the area immediately behind the vehicle on the Uconnect™ 8.4 multimedia centre screen. It also displays grid lines to assist when manoeuvring into tight spaces. Available.

PARK-SENSE® FRONT AND REAR PARK ASSIST SYSTEM.⁽³⁾ When in Reverse or driving Forward at low speeds, sensors detect the presence of objects up to approximately 1.2 metres in front of the vehicle and 2.0 metres from the rear, providing both audible and visual warnings if an obstacle is detected. Available.

REAR CROSS-PATH DETECTION (RCP).⁽³⁾ When in Reverse, rear sensors warn the driver with an audible chime if cross-traffic approaches the vehicle. Included with Blind-Spot Monitoring.⁽⁴⁾

BLIND-SPOT MONITORING (BSM).⁽⁴⁾ This technology uses radar sensors to aid the driver when changing lanes or if being passed by unseen vehicles. The system notifies the driver of a vehicle in his/her blind spot via an illuminated icon on the sideview mirrors and selectable audible warning. Available.



300S AWD shown in Dark Ceramic Grey with optional black painted roof.

MOST ADVANCED ALL-WHEEL DRIVE IN ITS CLASS.⁽¹⁾ Available on V6 and V8 models, it automatically engages when wheel slip is detected or when the Auto/Stick™ is engaged, the Electronic Stability Control (ESC)⁽⁵⁾ system is turned off, the windshield wipers are activated or the outside temperature is below 3°C. The on-demand active transfer case provides a seamless transition between rear-wheel and all-wheel drive. It consistently delivers outstanding performance and handling while maximizing fuel efficiency.

ELECTRONIC STABILITY CONTROL (ESC)⁽⁵⁾ ESC applies strategic braking and reduces engine power when overly sharp steering actions are detected. It also includes All-Speed Traction Control and electronic Brake Assist for quicker braking in emergency situations. Standard.

HILL START ASSIST. This feature automatically applies the brakes for two seconds to allow the driver time to apply the throttle, preventing rollback on hills and inclines. Standard.

AIR BAGS.⁽⁶⁾ Advanced multistage front, supplemental front-seat-mounted side, driver knee and supplemental side-curtain air bags for front and rear outboard occupants are all standard.

REACTIVE FRONT HEAD RESTRAINTS.⁽⁷⁾ This technology helps provide first-rate peace of mind. The head restraint moves forward and upward in the event of a rear-end collision, decreasing the space between the head restraint and the occupant's head, helping to stave off neck injuries. Standard.

TIRE PRESSURE MONITORING. Standard pressure sensors in the tire valves allow for automatic detection and notification when any tire pressure is low.

ENHANCED ACCIDENT RESPONSE SYSTEM (EARS). This standard system makes it easier for emergency personnel to see and reach occupants in the event of an accident involving air bag deployment by turning on interior lighting, flashing hazard lamps, unlocking doors, and shutting off the flow of fuel to the engine once the vehicle has stopped.



Shown in Billet Metallic.

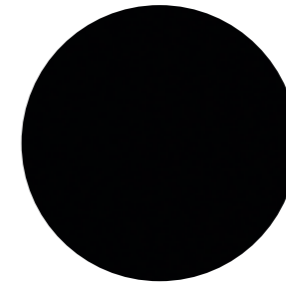
300 SRT®

Powered by a 6.4-litre HEMI® V8 engine, this performance machine outputs a track-worthy 470 horsepower and 470 lb-ft of torque. It also features FuelSaver Multi-Displacement System (MDS) technology for increased fuel efficiency. Exterior design embellishments like 20-inch forged aluminum SRT design wheels, black headlamp bezels and the available Black Chrome Group with SRT Black Vapour chrome wheels and gloss black brick-pattern grille with chrome surround take this luxury performer to its own level. 300 SRT adds a three-mode adaptive damping suspension, high-performance steering and leather-wrapped heated steering wheel with a flattened bottom, paddle shifters and palm rests. SRT Performance Pages, shown on the Uconnect 8.4 multimedia centre screen, allow drivers to monitor stats like 0-100 km/h, 400-metre times, braking response and lateral G-force performance.⁽⁸⁾ The interior trim includes real carbon-fibre accents and bolstered performance seats now available in Sepia as well as black and red. Rev up the available harman/kardon® 19-speaker sound system with a 900-watt amplifier, and this machine has just been equalized.

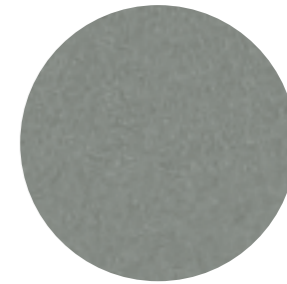




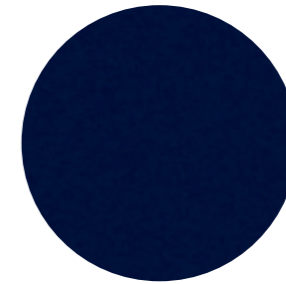
EXTERIOR COLOURS Not all colours available on all models.



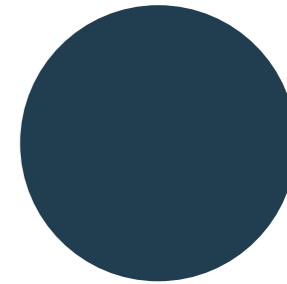
GLOSS BLACK



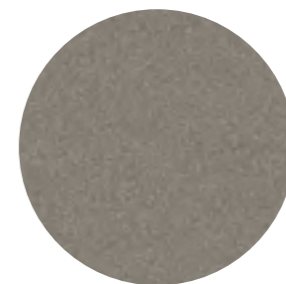
BILLET METALLIC



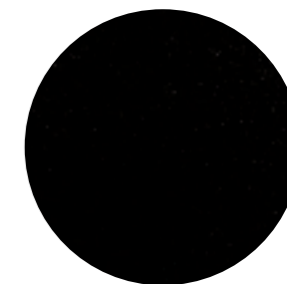
JAZZ BLUE PEARL



DARK CERAMIC GREY



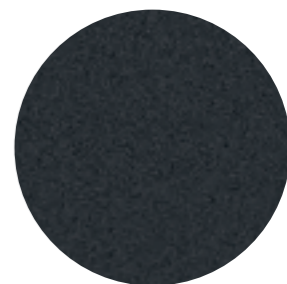
PEWTER GREY PEARL



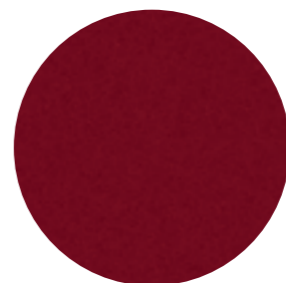
PHANTOM BLACK TRI-COAT PEARL



BRIGHT WHITE



GRANITE CRYSTAL METALLIC



DEEP CHERRY RED CRYSTAL PEARL



IVORY TRI-COAT PEARL

Uconnect™ is the media hub that allows you to stay connected, informed, entertained and focused on driving. Available voice command⁽⁹⁾ allows you to use your voice to select AM/FM radio stations or SiriusXM Satellite Radio⁽¹⁰⁾ channels, as well as make/receive calls and select destination entries with the available navigation.⁽¹¹⁾ You'll have multiple ways to access audio, including a USB port, iPod® control with voice command,⁽⁹⁾ Bluetooth® streaming audio and SiriusXM Satellite Radio,⁽¹⁰⁾ which features song/artist alerts, game alerts, favourites and replay (your first year of service is included). The available intuitive Garmin® navigation⁽¹¹⁾ can locate nearby restaurants, shopping, hospitals or points of local interest, and provides easy-to-understand directions, including lane guidance. Top it all off with a system that is clever enough to synchronize with your phone's address book⁽¹²⁾ — up to 1000 entries — every time you get into your vehicle.

CHRYSLER 300 FEATURES

300 TOURING



Premium Cloth – Black
Standard

Premium Cloth – Light Frost
Standard



Nappa Leather-faced – Black
Available

Nappa Leather-faced – Light Frost
Available

POWERTRAIN

- 3.6L Pentastar™ Variable Valve Timing (VVT) V6 engine with 8-speed automatic transmission

INTERIOR AMENITIES

- Premium cloth seating
- Power 12-way driver's seat including lumbar adjust
- 60/40 split-folding rear seat
- Uconnect™ 8.4 multimedia centre with six speakers
- SiriusXM Satellite Radio including one-year subscription⁽¹⁰⁾
- Steering wheel-mounted cruise and audio controls
- Leather-wrapped steering wheel and shift knob
- Tilt/telescoping steering column
- Electronic Vehicle Information Centre
- Auxiliary input jack for mobile devices
- Remote USB port
- Power windows, front one-touch up-and-down
- Air conditioning with Dual-Zone Automatic Temperature Control, humidity sensor and air filtering
- Sun visors with illuminated vanity mirrors
- Auto-dimming rearview mirror
- Front and rear reading/courtesy lamps
- Acoustic windshield and front-door glass
- Remote fuel-door release and power trunk-lid release
- Illuminated front cup holders and rear passenger-assist handles
- Full-length floor console with 12-volt power outlet
- Analogue clock

EXTERIOR FEATURES

- 17-inch Tech Silver aluminum wheels (RWD)
- P215/65R17 BSW All-Season tires (RWD)
- Dual rear exhaust with bright tips
- Automatic, bifunction halogen projector headlamps with chrome accents
- Fog lamps
- Power-heated mirrors, manual foldaway
- Chrome exterior accents and bright grille surround
- Body-colour exterior mirrors and door handles
- Centre High-Mounted Stop Light

SAFETY & SECURITY

- Electronic Stability Control⁽⁵⁾ with Hill Start Assist and All-Speed Traction Control
- Four-wheel disc antilock brakes (RWD)
- Rain Brake Support and Ready Alert Braking
- Tire pressure monitoring system
- Keyless Enter 'n Go™ with remote proximity entry
- Reactive front head restraints
- Advanced multistage front, supplemental front-seat-mounted side, supplemental side-curtain and driver's knee blocker air bags⁽⁶⁾
- Sentry Key® antitheft engine immobilizer
- Enhanced Accident Response System

CAPABILITY & FUNCTIONALITY

- Four-wheel independent comfort suspension (RWD)
- 2.65 rear axle ratio/200-mm rear axle
- Electro-hydraulic power steering; rack and pinion
- 160-amp alternator and 730-amp maintenance-free battery

OPTIONAL EQUIPMENT

- Hands-Free Communication⁽⁹⁾ with Bluetooth® streaming audio
- 27F CPOS
- All-Wheel Drive (27F only)
- Dual-Pane Panoramic Sunroof (27F only)
- Driver Convenience Group (27F only)
- Uconnect 8.4N (27F only)



300C



Nappa Leather-faced with perforated inserts – Light Frost
Standard



Nappa Leather-faced with perforated inserts – Black
Standard

POWERTRAIN

- 3.6L Pentastar™ VVT V6 with 8-speed automatic
- 5.7L HEMI® VVT V8 with MDS and 5-speed automatic

ENHANCEMENTS vs. 300 TOURING

- Nappa leather-faced heated front and rear seats
- 8-way power driver's and front-passenger seats with 4-way lumbar adjust
- 18-inch chrome-clad aluminum wheels (RWD)
- P225/60R18 BSW Touring tires (RWD)
- Ventilated front seats
- Heated wood/leather-wrapped steering wheel
- Auto-dimming exterior driver's mirror
- Driver's memory: radio, seat, pedals, exterior mirrors
- Power backlight sunshade
- Hands-free communication⁽⁹⁾ with Bluetooth® streaming audio
- ParkView® Rear Back-up Camera⁽³⁾
- Auto-adjust-in-Reverse exterior driver mirror
- Chrome, power, multi-function, manual folding mirrors
- Bright door handles
- Chrome headlamp and exterior accents
- Six premium Alpine® speakers with 276-watt amplifier
- Driver and passenger lower LED lamps
- Front and rear LED map pockets

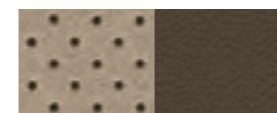
- Heated/cooled front console cup holder
- Power tilt/telescoping steering column
- Front door sill scuff pads
- Front and rear floor mats; trunk mat
- Remote start
- Universal garage door opener⁽¹³⁾
- Security alarm
- Illuminated rear cup holders
- 180-amp alternator

OPTIONAL EQUIPMENT

- Beats Audio™
- harman/kardon® Audio Group
- SafetyTec™ Group
- Light Group
- Dual-Pane Panoramic Sunroof
- Uconnect™ 8.4N with Navigation⁽¹¹⁾
- 20-inch Polished Aluminum Wheels (RWD)
- All-Wheel Drive



300C LUXURY SERIES



Premium Nappa Leather-faced with perforated inserts – Dark Frost/ Light Frost
Standard



Premium Nappa Leather-faced with perforated inserts – Black
Standard

POWERTRAIN

- 3.6L Pentastar VVT V6 with 8-speed automatic
- 5.7L HEMI VVT V8 with MDS and 5-speed automatic

ENHANCEMENTS vs. 300C

- Premium Nappa leather-faced seats
- Premium leather interior trim
- 20-inch polished aluminum wheels (RWD)
- P245/45R20 BSW All-Season Performance tires (RWD)
- Luxury steering wheel
- Luxury front and rear floor mats
- Platinum chrome exterior mirrors
- Platinum chrome mesh grille
- Platinum chrome door handles
- Steering wheel-mounted shift control
- Touring suspension (RWD)
- Sport mode

OPTIONAL EQUIPMENT

- SafetyTec Group
- Light Group
- Uconnect 8.4N with Navigation⁽¹¹⁾
- harman/kardon Audio Group
- Dual-Pane Panoramic Sunroof
- Beats Audio
- All-Wheel Drive



300S



Nappa Leather-faced – Black
Standard

Nappa Leather-faced with Silver accent stitching – Red
Standard

POWERTRAIN

- 3.6L Pentastar VVT V6 with 8-speed automatic
- 5.7L HEMI® VVT V8 with Multi-Displacement System and 5-speed automatic

ENHANCEMENTS vs. 300 TOURING

- Nappa leather-faced seating with heated front seats
- 8-way power driver's and front-passenger seats with 4-way lumbar adjust
- 20-inch polished aluminum wheels with black painted pockets (RWD)
- P245/45R20 BSW All-Season performance Firestone® tires (RWD)
- Beats Audio™
- Hands-free communication⁽⁹⁾ with Bluetooth streaming audio
- Steering wheel-mounted shift control
- Sport mode
- Touring suspension (RWD)
- ParkView® Rear Back-up Camera⁽³⁾
- Remote start
- Universal garage door opener⁽¹³⁾
- Illuminated rear cup holders
- Security alarm
- Black headlamp accents
- Bright grille surround with black chrome bars
- 180-amp alternator

OPTIONAL EQUIPMENT

- SafetyTec™ Group
- Light Group
- Luxury Group
- Dual-Pane Panoramic Sunroof
- Black Painted Roof
- Uconnect 8.4N with Navigation⁽¹¹⁾
- All-Wheel Drive



300 SRT®



Nappa Leather-faced with silver accent stitching and perforated suede inserts – Red
Standard



Nappa Leather-faced with silver accent stitching and perforated suede inserts – Black
Standard



Laguna Leather – Sepia
Available

POWERTRAIN

- 6.4L HEMI V8 with Multi-Displacement System and 5-speed automatic

ENHANCEMENTS vs. 300C LUXURY SERIES

- Nappa leather-faced seats with perforated suede inserts
- 20-inch forged aluminum SRT design wheels
- P245/45R20 All-Season Performance Goodyear® tires
- High-performance adaptive damping suspension
- Performance-tuned steering
- Brembo® four-piston calipers painted silver
- Brembo performance brakes
- Uconnect 8.4N with navigation⁽¹¹⁾ and SRT Performance Pages
- Park-Sense® Front and Rear Park Assist System⁽⁵⁾
- 3.06 rear axle ratio
- 226-mm rear axle
- 220-amp alternator
- Three-mode Electronic Stability Control⁽⁵⁾
- Knock-back mitigation
- Sport mode three
- Body-colour, power, multi-function, manual folding mirrors
- High-performance four-wheel independent suspension
- Flat-bottom leather-wrapped steering wheel
- Leather-wrapped shift knob
- Bright pedals
- Real carbon-fibre interior accents
- Automatic headlamp levelling system

- Adaptive bi-xenon HID headlamps with auto high-beam control
- Rain-sensing windshield wipers
- Black headlamp accents
- Bright surround/gloss black grille
- Body-colour fascia, door handles, exterior mirrors and spoiler
- Severe-duty engine cooling
- Engine oil cooler
- Tire service kit (replaces compact spare)

OPTIONAL EQUIPMENT

- SafetyTec Group
- Black Vapour Chrome Group
- Laguna Leather Package
- Leather Interior Group
- harman/kardon Audio Group
- Dual-Pane Panoramic Sunroof
- Black Painted Roof
- 20-inch Black Chrome Aluminum SRT Design Wheels
- 245/45R20 BSW Performance Tires



PACKAGE DETAILS

<p>Luxury Group</p> <ul style="list-style-type: none"> • Heated rear seats • Power-adjustable pedals with memory • Power backlight sunshade • Auto-dimming exterior driver's mirror • Power, multifunction mirrors; manual folding • Driver's memory: radio, seat, exterior mirror • Auto-adjust-in-Reverse exterior mirrors • Heated steering wheel • Power tilt/telescoping steering column • Heated/cooled front console cup holders • Driver's and front-passenger lower LED lamps • Front and rear LED map pockets • Door sill scuff pads • Trunk mat <p>Leather Interior Group</p> <ul style="list-style-type: none"> • Premium leather interior trim • Luxury front and rear floor mats 	<p>5.7L HEMI® VVT V8</p> <ul style="list-style-type: none"> • Performance four-wheel disc antilock brakes • 215-mm rear axle • Performance four-wheel independent suspension <p>SafetyTec™ Group</p> <ul style="list-style-type: none"> • Power, heated exterior mirrors; manual folding • Rain-sensing windshield wipers • Adaptive Cruise Control⁽²⁾ and Forward Collision Warning⁽²⁾ • Blind-Spot Monitoring⁽⁴⁾/Rear Cross-Path Detection⁽³⁾ • Park-Sense® Front⁽³⁾ and Rear Park Assist System⁽³⁾ • Exterior mirrors with supplemental signals and courtesy lamps <p>Light Group</p> <ul style="list-style-type: none"> • Adaptive bi-xenon HID headlamps with auto high-beam control • Auto-levelling headlamps • Rear fog lamps 	<p>Black Chrome Group</p> <ul style="list-style-type: none"> • 20-inch Black Vapour Chrome aluminum wheels • Body-colour fascia with black chrome accents • Black chrome/gloss black grille • Black chrome daylight openings <p>Limited Group</p> <ul style="list-style-type: none"> • 18-inch chrome-clad aluminum wheels • P225/60R18 BSW Touring Firestone® tires • ParkView® Rear Back-up Camera⁽³⁾ • Power driver's/front-passenger seats with 4-way power lumbar adjust • Remote start system • Security alarm • Universal garage door opener⁽¹³⁾ • Centre High-Mounted Stop Light <p>22F CPOS</p> <ul style="list-style-type: none"> • Nappa leather-faced seating • Hands-free communication⁽⁹⁾ with Bluetooth® streaming audio • Heated front seats • Illuminated rear cup holders 	<p>Beats Audio™</p> <ul style="list-style-type: none"> • 10 premium speakers including subwoofer • 552-watt amplifier <p>harman/kardon® Audio Group</p> <ul style="list-style-type: none"> • 18 premium speakers with subwoofer • 900-watt amplifier <p>NOTE: Deletes power backlight sunshade</p> <p>Laguna Leather Package</p> <ul style="list-style-type: none"> • Premium Laguna leather-faced seating in Sepia • Luxury front and rear floor mats <p>All-Wheel Drive</p> <ul style="list-style-type: none"> • Active transfer case with front-axle disconnect • 19-inch polished aluminum wheels (S model adds black painted pockets) • P235/55R19 BSW All-Season Performance tires • 3.07 rear axle ratio (with 3.6L V6) • 3.06 rear axle ratio (with 5.7L V8) • Performance four-wheel disc antilock brakes
--	--	---	--

POWER AND FUEL ECONOMY

Based on 2014 *EnerGuide* fuel consumption ratings. Government of Canada test methods used. Your actual fuel consumption will vary based on driving habits and other factors. Ask your retailer for *EnerGuide* information.

Engine	Transmission	Horsepower	Torque (lb-ft)	L/100 km (mpg)	
				City	Highway
3.6L Pentastar™ VVT V6	8-speed auto (RWD)	292	260	10.9 (26)	6.4 (44) ⁽¹⁾
3.6L Pentastar VVT V6 (300S)	8-speed auto (RWD)	300	260	10.9 (26)	6.4 (44) ⁽²⁾
5.7L HEMI® V8	5-speed auto (RWD)	363	394	14.1 (20)	7.8 (36) ⁽²⁾
6.4L SRT V8	5-speed auto (RWD)	470	470	15.0 (19)	8.7 (32) ⁽³⁾
3.6L Pentastar VVT V6	8-speed auto (AWD)	292	260	11.4 (25)	7.3 (39)
3.6L Pentastar VVT V6 (300S)	8-speed auto (AWD)	300	260	11.4 (25)	7.3 (39)
5.7L HEMI VVT V8	5-speed auto (AWD)	363	394	14.4 (20)	8.5 (33)

⁽¹⁾As described on pages 2 and 6. ⁽²⁾As described on page 6. ⁽³⁾As described on page 12.

SPECIFICATIONS

Curb Weight, kg (lb)	3.6L	5.7L	6.4L SRT®
RWD	1828 (4029)	1962 (4326)	1979 (4365)
AWD	1921 (4235)	2048 (4515)	—
GVWR, kg (lb)			
RWD	2313 (5100)	2426 (5350)	2426 (5350)
AWD	2494 (5500)	2494 (5500)	—
Towing Capacity (when properly equipped)			
Towing Capacity maximum, kg (lb)	454 (1000)		not recommended
Exterior, mm (in.)	3.6L V6 & 5.7L V8		6.4L V8
Wheelbase	3052 (120.2)		3052 (120.2)
Overall Height (maximum)	1504 (59.2)		1479 (58.3)
Front Track	1611 (63.4)		1610 (63.4)
Rear Track	1620 (63.8)		1604 (63.1)
Overall Width	1902 (75.0)		1885 (74.2)
Overall Length	5044 (198.6)		5088 (200.3)
Ground Clearance (minimum)	120 (4.7)		111 (4.4)
Interior, mm (in.)	Front	Rear	
Headroom	981 (38.6)	963 (37.9)	
Legroom	1061 (41.8)	1019 (40.1)	
Hip Room	1428 (56.2)	1425 (56.1)	
Shoulder Room	1510 (59.5)	1465 (57.7)	
Volumes & Capacities			
Cargo Volume, L (cu ft)	461 (16.3)		
Seating Capacity	5		
Fuel Tank Capacity, L (gal)	72 (15.9)		

WHEELS



A.
17-INCH TECH SILVER ALUMINUM
Standard on Touring (WFM)

C.
20-INCH POLISHED ALUMINUM
Standard on 300C Luxury Series
Available on 300C RWD (WPM)

E.
18-INCH CHROME-CLAD ALUMINUM
Standard on 300C
Available on 300 Touring RWD (WPN)

G.
19-INCH POLISHED ALUMINUM
Standard on 300 Touring, 300C, and 300C Luxury Series AWD models (WPA)

B.
20-INCH POLISHED ALUMINUM WITH BLACK PAINTED POCKETS
Standard on 300S (WPI)

D.
20-INCH ALUMINUM SRT® DESIGN
Standard on 300 SRT (WPF)

F.
20-INCH BLACK CHROME ALUMINUM
Available on 300 SRT (WPI)

H.
19-INCH POLISHED ALUMINUM WITH BLACK PAINTED POCKETS
Standard on 300S AWD models (WPB)



WARRANTIES 2014 Chrysler, Jeep, Dodge and Ram vehicles are backed by a 5-year or 100,000-Kilometre fully transferable Powertrain Limited Warranty* with \$0 deductible plus 24-hour roadside assistance.† SRT vehicles are backed by a 3-year or 60,000-Kilometre fully transferable Powertrain Limited Warranty* with \$0 deductible plus 24-hour roadside assistance. Basic Warranty coverage is for 3 years or 60,000 Kilometres.* Rust-through coverage on all body sheet metal is for 3 years. The Cummins® Turbo Diesel engine is protected by a separate Limited Warranty, covering the engine for 5 years or 160,000 kilometres.* The EcoDiesel engine is backed by a 5-year or 100,000-Kilometre fully transferable Powertrain Limited Warranty* with \$0 deductible plus 24-hour roadside assistance.†

*Whichever comes first. Some conditions may apply. †The 5-year/100,000-Kilometre Powertrain Limited Warranty does not apply to vehicles sold for certain commercial uses. See your retailer for full details.

AUTHENTIC CHRYSLER ACCESSORIES BY MOPAR® are designed specifically for your Chrysler vehicle for exceptional fit, finish and performance. Visit your retailer or mopar.ca

CHRYSLER SERVICE CONTRACTS Chrysler Canada Inc. has a vested interest in your satisfaction and owner experience with your new vehicle. Chrysler Canada Service Contracts offer extended service and maintenance plans to help ensure you'll enjoy your vehicle for many years down the road – for just pennies a day. For more information on comprehensive vehicle coverage, see your local Chrysler, Jeep, Dodge and Ram retailer, call 1-800-465-2001 or visit chryslercanada.ca/owners

ABOUT THIS CATALOGUE: Since the time of printing, some of the information you'll find in this catalogue may have been updated. Ask your retailer for details. Some of the equipment shown or described throughout this catalogue is available at extra cost. Specifications, descriptions, illustrative materials and all competitive comparisons contained herein are as accurate as known at the time this publication was approved for printing. Chrysler Canada Inc. reserves the right to make changes at any time without notice and without incurring obligation. For the price of the model with the equipment you desire, or verification of specifications contained herein, see your Chrysler, Jeep, Dodge, Ram and SRT retailer. Chrysler, the Chrysler Wing Design, Jeep, Dodge, Ram, 300C, HEMI, Mopar, Park-Sense, SRT, SRT8, Sentry Key and ParkView are registered trademarks, and Keyless Enter 'n Go, Uconnect, Pentastar and SafetyTec are trademarks of Chrysler Group LLC. Auto/Stick is a trademark of Hurst Performance. Bluetooth is a registered trademark of Bluetooth SIG, Inc. The trademarks Beats by Dr. Dre, Beats, BeatsAudio™ and the b logo are the property of Beats Electronics LLC. Cummins is a registered trademark of Cummins, Inc. Firestone is a registered trademark of Firestone Tire & Rubber Company. Garmin and the Garmin logo are registered trademarks of Garmin, Ltd. or its subsidiaries and are registered in one or more countries. Goodyear is a registered trademark of Goodyear Tire & Rubber Company. Sirius, XM and related marks and logos are trademarks of SiriusXM Radio Inc. iPod is a registered trademark of Apple Inc. All rights reserved. Harman Kardon is a registered trademark of Harman Industries, Inc. Alpine and the Alpine logo are registered trademarks of Alpine Electronics, Inc. Brembo is a registered trademark of Freni Brembo S.p.A. Facebook and logo are trademarks of Facebook Inc. The Twitter logo is a service mark of Twitter, Inc. © 2013 Chrysler Canada Inc. All rights reserved.

DISCLAIMERS: (1) Based on 2012 *Ward's* Large/Regular Car segmentation. (2) This is a driver convenience system, not a substitute for active driver involvement. The driver must remain aware of their surroundings and be prepared to use brakes to avoid collisions. (3) Always check entire surroundings before manoeuvring your vehicle. (4) Always check visually for vehicles prior to changing lanes. (5) No system can repeal the laws of physics or overcome careless driving actions. Performance is limited by available traction, which snow, ice and other conditions can affect. When the warning lamp flashes, the driver needs to use less throttle and adapt speed and driving behaviour to prevailing road conditions. (6) The advanced front air bags in this vehicle are certified to the federal regulations for advanced air bags. Children 12 years old and younger should always ride buckled up in a rear seat. Infants in rear-facing child restraints should never ride in the front seat of a vehicle with a passenger front air bag. All occupants should always wear their lap and shoulder belts properly. (7) Always sit properly with the head restraint properly adjusted. Never place anything in front of the head restraint. (8) Drive responsibly. Always obey the rules of the road. (9) Driving while distracted can result in loss of vehicle control. Only use mobile phones and other devices, even with voice commands, when it is safe to do so. Voice commands of phone require a Bluetooth compatible phone. (10) Requires SiriusXM Radio subscriptions governed by SIRIUS terms and conditions available at siriusxm.ca (11) Never program while driving. Mapping may not be detailed in all areas or reflect current road regulations. (12) Phone must support Bluetooth Phone Book Access Profile (PBAP). (13) Not compatible with all garage door openers.



1-800-361-3700 | CHRYSLER.CA



CHRYSLER IS A REGISTERED TRADEMARK OF CHRYSLER GROUP LLC.
52014C170E