

## Supreme Oil Service

\$39.95

This service is accompanied with an oil change. The engine is chemically cleaned using a gentle detergent. This removes harmful sludge and varnish deposits with old oil when drained. A chemical treatment is added to give extra protection to the engine.



## Fuel System Service

\$139.95

This service completely cleans the entire gasoline fuel system by chemically cleaning valves, injectors, combustion chamber, fuel lines, and throttle plate. Restores the fuel system to 'like new' operation for Maximum Performance.



## Brake Fluid Service

\$139.95

This service consists of flushing out all old contaminated brake fluid from the entire system, simultaneously replacing it with Wynn's HD Brake Fluid to ensure proper brake system operation.



## Brake Service

\$129.95

Brake pads are a critical part of your braking system. Pads are designed to wear with use and the rate of wear depends on usage and loads. Constant exposure to the elements may result in rust build-up, which can cause brake dragging, pulling, pulsating and/or abnormal noise. Regular lubrication and cleaning of braking system components helps ensure proper function as well as reducing premature wear and noise while braking.



## Cooling System Service

\$189.95

This service chemically cleans the entire cooling system, changes ALL the coolant, and the new coolant is treated to give it maximum protection over the life of the fluid. Ensures proper cooling system function.



## Transmission Service

\$304.95

This service chemically cleans the entire transmission, changes ALL the old contaminated transmission fluid, and the new fluid is treated to give it maximum protection over the life of the fluid. Helps ensure proper shifting and function.



## Differential Service

\$129.95

This service consists of draining all the old fluid from the Differential. It is then replaced with fresh Wynn's Synthetic Gear Oil with a protection package for better anti-friction and wear.



## Transfer Case Service

\$129.95

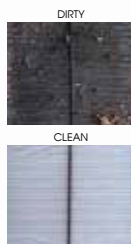
This service consists of draining all the old fluid from the Transfer Case. It is then replaced with fresh Wynn's Synthetic Transfer Case Fluid with a protection package for better anti-friction and wear.



## Cabin Air Filter Service

\$129.95

Replacing your cabin air filter during your visit will help trap any pollen, bacteria, dust, and exhaust gases from entering your vehicle. Additionally, we also treat your HVAC system with Wynn's Airco-Clean that helps kill any existing mold, bacteria and microorganisms. This leaves your vehicle with a fresh and clean (hypoallergenic) smell resulting in better air quality for you and your passengers.



These services are recommended based on Prince Edward Island driving conditions for getting optimal performance, and identifying issues prior to breakdowns. Our service team is professionally trained to provide you with the best quality long-term service you deserve.



COVERAGE UP TO  
**\$2,500**  
FIRST SERVICE  
80,001km - 160,000km



COVERAGE UP TO  
**\$5,000**  
FIRST SERVICE  
0km - 80,000km

We are so confident that our fluid maintenance services will keep your vehicle healthy, that we guarantee it for Life!



## 2022 OUTLANDER SERVICE PACKAGES

### Service A

- Rotate Tires
- Replace Engine Oil & Filter
- Inspection 1 to 6

### Service B

- Rotate Tires
- Replace Engine Oil & Filter
- Inspection 1 to 6
- Check/Replace Keyless Operation System Transmitter Battery
- Check Evaporate Emission Control System for Leaks and Clogging
- Check Fuel Lines
- Inspect Steering Gear & Linkage, Axle and Suspension Parts

### Service C

- Rotate Tires
- Replace Engine Oil & Filter
- Inspection 1 to 6
- Replace Air Cleaner Filter
- Change Brake Fluid
- Check Drive Belt
- Replace Air Purifier Filter

### Service D

- Rotate Tires
- Replace Engine Oil & Filter
- Inspection 1 to 6
- Check Evaporate Emission Control System for Leaks and Clogging
- Check Exhaust System
- Check Fuel Lines
- Replace Air Purifier Filter
- Check/Replace Keyless Operation System Transmitter Battery
- Inspect Steering Gear & Linkage, Axle and Suspension Parts



CHARLOTTETOWN  
**MITSUBISHI**

## Recommended Maintenance Schedule

(902) 367-7676

451 Mt Edward Rd,  
Charlottetown, PE C1E 2A1

### Hours of Operation

Monday - Wednesday 7:30am - 5:00pm  
Thursday 7:30am - 7:00pm  
Friday, 7:30am - 5:00pm  
Saturday 9:00am - 1:00pm  
Sunday Closed

Open 24 Hours Online at  
[charlottetownmitsubishi.ca](http://charlottetownmitsubishi.ca)





# SERVICE TYPE ITEMS

	5 Mth 8,000km	10 Mth 16,000km	15 Mth 24,000km	20 Mth 32,000km	25 Mth 40,000km	30 Mth 48,000km	35 Mth 56,000km	40 Mth 64,000km	45 Mth 72,000km	50 Mth 80,000km	55 Mth 88,000km	60 Mth 96,000km	65 Mth 104,000km	70 Mth 112,000km	75 Mth 120,000km	80 Mth 128,000km	85 Mth 136,000km	90 Mth 144,000km	95 Mth 152,000km	100 Mth 160,000km	105 Mth 168,000km	110 Mth 176,000km	115 Mth 184,000km	120 Mth 192,000km	125 Mth 200,000km	130 Mth 208,000km	135 Mth 216,000km	140 Mth 224,000km	
Replace Engine Oil & Filter	*	*	*	*	*	*	*	*	*	*	*	*	*	*	*	*	*	*	*	*	*	*	*	*	*	*	*	*	
Rotate Tires		*		*		*		*		*		*		*		*		*		*		*		*		*		*	
Inspect Engine Air Filter		*				*				*				*				*				*				*			
Inspect Exhaust System Components				*				*				*				*				*				*				*	
Audible Valve Clearance Inspection						*				*					*			*						*				*	
Check Evaporative Emission Control System for Leaks									*			*						*						*				*	
Inspect Fuel System for Leaks									*			*						*									*		
Inspect Rear Axle Oil Level												*																*	
Replace Iridium Spark Plugs																						*							
Inspect Disc Brake Pads & Rotors		*	*		*	*		*	*		*	*		*	*		*	*		*	*		*	*		*	*	*	*
Check Brake Hoses for Deterioration & Leaks		*	*		*	*		*	*		*	*		*	*		*	*		*	*		*	*		*	*	*	*
Inspect Driveshaft Boots for Grease Leaks & Damage		*	*		*	*		*	*		*	*		*	*		*	*		*	*		*	*		*	*	*	*
Check Tire Repair Sealant Expiration Date (If Equipped)		*	*		*	*		*	*		*	*		*	*		*	*		*	*		*	*		*	*	*	*
Check Manual Transxle/Transmission Oil			*			*			*			*			*			*			*			*			*	*	*
Check Transfer Case Oil			*			*			*			*			*			*			*			*			*	*	*
Check Rear Axle Oil Level			*			*			*			*			*			*			*			*			*	*	*
Check Drive Belt Condition			*			*			*			*			*			*			*			*			*	*	*
Inspect Ball Joints & Steering Linkage Seals for Leaks & Damage			*			*			*			*			*			*			*			*			*	*	*
Inspect Suspension for Looseness & Damage			*			*			*			*			*			*			*			*			*	*	*
Inspect Brake Drum Linings & Rear Wheel Cylinders for Wear & Leaks			*			*			*			*			*			*			*			*			*	*	*
Inspect Condition on All Coolant Hoses (Radiator & Heater)			*			*			*			*			*			*			*			*			*	*	*
Transmission Fluid Drain & Fill						*			*			*			*			*			*			*			*	*	*
Supreme Oil Service			*			*			*			*			*			*			*			*			*	*	*
Fuel System Service				*			*			*			*			*		*		*			*		*			*	*
Brake Fluid Service						*			*			*			*			*			*			*		*		*	*
Brake Service			*			*			*			*			*			*		*			*		*		*	*	*
Cooling System Service									*			*			*			*		*			*		*			*	*
Differential Service								*				*			*		*						*		*		*	*	*
Transfer Case Service (AWD Only)								*				*			*		*						*		*		*	*	*
Cabin Air Filter Service			*			*			*			*			*			*			*			*		*		*	*



# 2022 OUTLANDER

	5 Mth 8,000km	10 Mth 16,000km	15 Mth 24,000km	20 Mth 32,000km	25 Mth 40,000km	30 Mth 48,000km	35 Mth 56,000km	40 Mth 64,000km	45 Mth 72,000km	50 Mth 80,000km	55 Mth 88,000km	60 Mth 96,000km	65 Mth 104,000km	70 Mth 112,000km	75 Mth 120,000km	80 Mth 128,000km	85 Mth 136,000km	90 Mth 144,000km	95 Mth 152,000km	100 Mth 160,000km	105 Mth 168,000km	110 Mth 176,000km	115 Mth 184,000km	120 Mth 192,000km	125 Mth 200,000km	130 Mth 208,000km	135 Mth 216,000km	140 Mth 224,000km		
Service A		*		*				*		*				*		*				*		*				*		*	*	
Service B				*				*								*			*		*						*		*	*
Service C						*												*			*							*	*	*
Service D												*												*				*	*	*

\*Cabin Air Filter should be replace every year or 24,000km