

# CHEROKEE

2016



Jeep®

ADVENTURE

FREEDOM

ADVENTURE. *It manifests any number of ways. Wanderlust. A longing to learn. An appreciation for living in the moment with a simple curiosity for what lies beyond the next turn. Here's to making the most of the next 75 adventurous years.*

PASSION

AUTHENTICITY

SINCE 1941



CELEBRATING

75  
YEARS

— of the —

GO ANYWHERE,  
DO ANYTHING®  
SPIRIT

*BEST-IN-CLASS<sup>1\*</sup> 4x4 CAPABILITY<sup>†</sup> / JEEP<sup>®</sup> SELEC-TERRAIN<sup>®</sup> TRACTION MANAGEMENT SYSTEM<sup>†</sup> / 31 HWY MPG<sup>‡</sup> / COMMANDVIEW<sup>®</sup> DUAL-PANE PANORAMIC SUNROOF<sup>†</sup> / AWARD-WINNING UCONNECT<sup>®</sup> TECHNOLOGY / WORLD-CLASS INTERIOR CRAFTSMANSHIP / CLASS-EXCLUSIVE<sup>2</sup> 9-SPEED AUTOMATIC TRANSMISSION / BEST-IN-CLASS<sup>3</sup> TOWING CAPABILITY<sup>†</sup> / JEEP CARGO MANAGEMENT SYSTEM / BEST-IN-CLASS<sup>2</sup> 10 STANDARD AIR BAGS<sup>4</sup> / SELEC-SPEED<sup>®</sup> CONTROL<sup>†</sup> / 7-INCH MULTI-VIEW DISPLAY<sup>†</sup> / UCONNECT 8.4 NAV<sup>†</sup> / INTEGRATED VOICE COMMAND<sup>5</sup> WITH BLUETOOTH<sup>®</sup> / ADVANCED LED LIGHTING TECHNOLOGY / DAYTIME RUNNING LAMPS / UCONNECT ACCESS<sup>6</sup> APPS<sup>†</sup> / MULTIPLE STORAGE AND CUBBY AREAS / WIRELESS CHARGING PAD<sup>†</sup> / FOLD-FLAT FRONT-PASSENGER SEAT<sup>§</sup> WITH UNDER-CUSHION STORAGE<sup>†</sup> / 60/40 SPLIT-FOLDING RECLINING REAR SEATS / FORE/AFT ADJUSTABLE REAR SEATS / ALPINE<sup>®</sup> PREMIUM AUDIO SYSTEM<sup>†</sup> / PARKVIEW<sup>®</sup> REAR BACK-UP CAMERA<sup>7†</sup> / PARALLEL AND PERPENDICULAR PARK ASSIST<sup>7†</sup> / HEATED STEERING WHEEL<sup>†</sup> / SIRIUSXM<sup>®</sup> SATELLITE RADIO<sup>8†</sup> / KEYLESS ENTER 'N GO<sup>™†</sup> / ADAPTIVE CRUISE CONTROL<sup>9†</sup> WITH STOP AND GO / HEATED AND VENTILATED FRONT SEATS<sup>†</sup> / BLIND SPOT MONITORING<sup>10†</sup> / LANESENSE<sup>®</sup> LANE DEPARTURE WARNING<sup>11†</sup> WITH LANE KEEP ASSIST*



*Limited in Billet Silver Metallic.*

\*A note about this brochure: all disclaimers and disclosures can be found on the back cover. †Available features. ‡Based on 2016 EPA-estimated 31 hwy mpg with 2.4L engine and 9-speed automatic transmission. Actual mileage may vary. †Not intended for use by driver while vehicle is in motion. Always drive carefully.

# ADVENTUROUSLY CIVILIZED.

*Explore the concrete jungle in style.*

*City streets and worrisome weather may threaten the timid, but those who travel in a Cherokee move forward with style, grace and confidence.*

*Navigate with conviction while adhering to principles that demand an efficient performance. Realize economies as well as assured capabilities. A smooth sedan-like ride is enhanced by a rich interior that can comfortably carry passengers and plenty of cargo with equal ease. Set your course with confidence and Jeep® Cherokee.*



CHEROKEE GETS YOU THERE.



*Best-in-class<sup>1</sup>  
available*  
**4x4  
CAPABILITY**

*Best-in-class<sup>3</sup>  
available*  
**TOWING  
CAPABILITY**

*Best-in-class<sup>2</sup>*  
**V6  
FUEL ECONOMY**

*Best-in-class<sup>2</sup>*  
**10 STANDARD  
AIR BAGS<sup>4</sup>**

*Best-in-class<sup>2</sup>*  
**8.4-INCH  
TOUCHSCREEN  
RADIO**



*It's more than a new way of looking at the world.  
Cherokee can take you to a new world altogether.  
You'll stop at nothing to get there, backed by the  
power of Jeep® engineered available Active Drive  
4x4 systems. Hello, world. Goodbye, worries.*

# NATURAL SELECTION

## Selec-Terrain® Traction Management System

Every Cherokee equipped with an available 4x4 system arrives with a Jeep® Selec-Terrain Traction Management system, giving you the power to tackle Mother Nature's toughest conditions. You'll have a variety of settings that deliver ultimate driving stability by coordinating 12 vehicle systems, including throttle control, transmission shifting, transfer case, traction control and Electronic Stability Control (ESC)!<sup>2</sup>

Choose from up to five sure-footed modes: Auto, Sport, Snow, Sand/Mud and available Rock.

AUTO



SPORT



SNOW



SAND/MUD



ROCK (AVAILABLE)



Trailhawk® in Billet Silver Metallic.



**LOOK.** Fingertip controls on Cherokee's steering wheel can instantly let you access important vehicle performance data, available navigation and more on the available 7-inch full-color Multi-View Display screen.

**LISTEN.** Hear music as it was intended to be heard. Opt for the premium Alpine® 9-speaker sound system with an 8-inch subwoofer.

**CHARGE.** An optional wireless charging pad is concealed within the center console. Convenient phone storage and USB, SD, auxiliary and 12-volt power port outlets play a big part in an even bigger technology story.

# A HABITAT THAT HOLDS PROMISE.

*Cherokee is skilled on every terrain.*



**POWERFULLY EFFICIENT.** Choose from the 2.4L Tigershark® MultiAir® 2 I-4 engine that achieves 31 hwy mpg\* or the 3.2L Pentastar® V6 engine that puts you in charge of 271 hp and 239 lb-ft of torque, enough to tow up to 4,500 lb when properly equipped. Either way, you'll come out ahead.

**QUIET AND SMOOTH.** Independent front and rear suspension systems and front MacPherson struts help create a ride free of unwanted noise, vibration and harshness. Enjoy the hush of this world-class traveler.

**CLASS-EXCLUSIVE<sup>2</sup> TRANSMISSION.** You will experience a performance that's both powerful and refined. Gearshifts are all but imperceptible. Cherokee's standard 9-speed automatic transmission delivers a car-like ride that's exceptionally smooth.

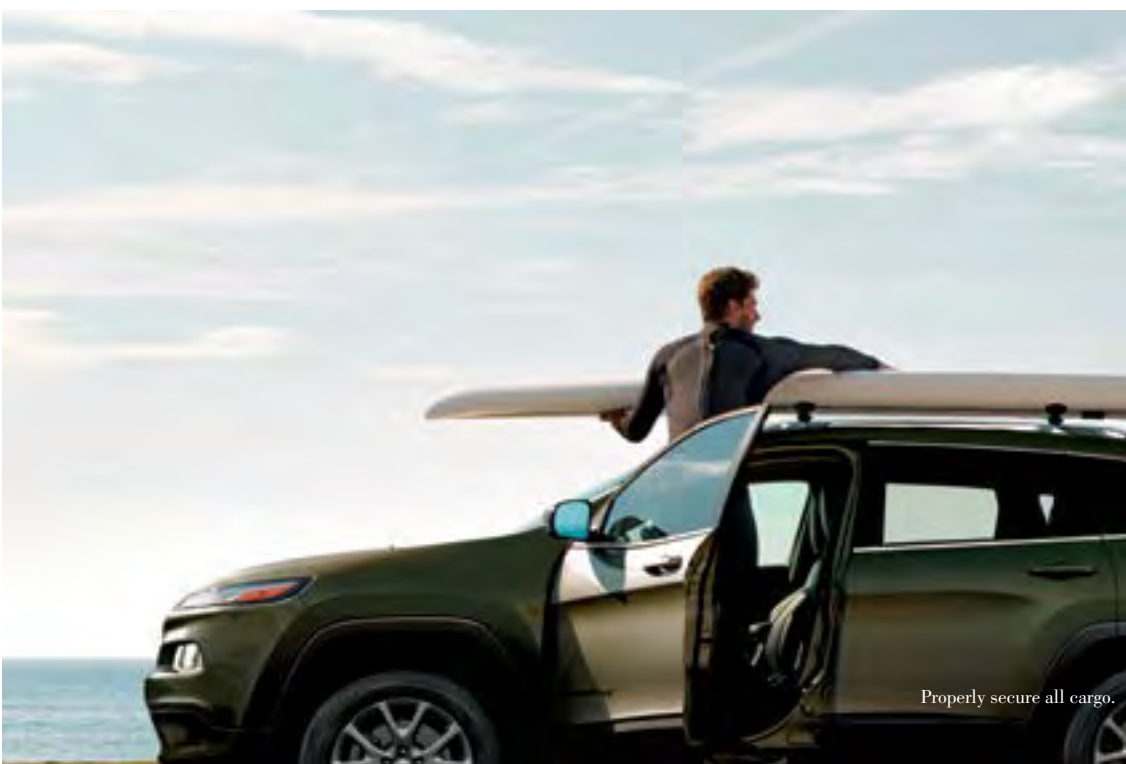




=====

TAKE THE LONG WAY HOME.  
*When you view life from a new perspective,  
nothing will ever be the same. Enjoy the ride.*

=====



Properly secure all cargo.

# MARK OF MASTERY.

Every Jeep® Cherokee Trailhawk® bears a Trail Rated® badge that announces its on- and off-road mastery. Rest assured your Trail Rated Trailhawk works hard to safely navigate through the most difficult challenges Mother Nature can set forth. Five Trail Rated test categories prove Cherokee's Trailhawk fortitude.



Trailhawk in Billet Silver Metallic.

## TRAIL RATED TEST CATEGORIES



### TRACTION

Trail Rated traction helps you maintain controlled forward motion. You can cross icy urban bridges, climb steep sand dunes and master muddy two-tracks. Others may fear untamed terrain, but your Trail Rated Cherokee Trailhawk has the traction within to master all kinds of topography and driving conditions.



### WATER FORDING<sup>13</sup>

Traverse that stream with confidence, thanks to additional electrical and body seals, plus a high air-intake location. Cherokee Trailhawk has the capability to safely manage in up to 20 inches of water.<sup>13</sup> Always inspect all waterways before proceeding, just to make sure there are no unforeseen pitfalls.



### MANEUVERABILITY

Cherokee Trailhawk is born with the athletic ability to navigate narrow gaps and handle emergency situations, while maintaining its integrity on the trails. Precision steering and an optimized wheelbase allow for expert navigation at all times.



### ARTICULATION

Cherokee Trailhawk's suspension systems enhance on- and off-road performance by maximizing flexibility, axle articulation and wheel travel. This standard indicates that when one or more wheels are elevated, the Jeep 4x4 system helps the other wheels stay on the ground longer to keep you moving.



### GROUND CLEARANCE

Head out knowing that your Trail Rated Cherokee Trailhawk has optimized approach, departure and breakover angles designed to clear logs, rocks and uneven ground. Your undercarriage is protected, too, with forged skid plates that cover your vehicle's most valuable underbody elements.



Trailhawk® in Deep Cherry Red Crystal Pearl with optional 17-inch Jet Black Semi-Gloss Off-Road Aluminum wheels.





**PREPARED.** With 10 standard air bags<sup>4</sup> at the ready, Cherokee adds a welcome sense of security to every drive. Full-length side-curtain driver and front-passenger inflatable knee bolster air bags<sup>4</sup>; seat-mounted for front and rear occupants, work together to help provide protection.

**ACTIVE.** Standard systems include Electronic Stability Control (ESC)<sup>12</sup>; Electronic Roll Mitigation (ERM) and Hill Start Assist (HSA). Always on guard to protect your peace of mind, Cherokee's optional systems include LaneSense<sup>®</sup> Lane Departure Warning with Lane Keep Assist (LDW+),<sup>11</sup> Full-Speed Forward Collision Warning with Active Braking (FSCW+),<sup>14</sup> Blind Spot Monitoring<sup>10</sup> and Adaptive Cruise Control with Stop and Go.<sup>9</sup>

**WATCHFUL.** The available Uconnect<sup>®</sup> Access<sup>6</sup> includes 9-1-1 Call<sup>15</sup> and Roadside Assistance Call<sup>16</sup> buttons, conveniently located on the rearview mirror and offering critical connections. Press "9-1-1" to reach a 9-1-1 call center, or push "Assist" to quickly summon roadside help.

**COLD WEATHER GROUP.** When temps take a dive, stay safe and comfortable with this bundle of go-all-day essentials. For colder weather, you'll appreciate the group's heated front seats and steering wheel, engine block heater, windshield wiper de-icer and power heated side mirrors. And no matter what the weather brings, the group's Remote Start System, all-season floor mats and steering-wheel audio and temp controls are always helpful. Available.



**COMFORTABLE.** The Ventilated/Memory Seat Group offers an upscale appearance with premium leather-trimmed seats for all, with ventilated seats for the lucky front passengers. Memory settings for the radio, driver seat and exterior mirror add convenience. Available on Trailhawk®.

**CONVENIENT.** It's truly a work of art. The available Uconnect® 8.4 NAV radio presents full-color three-dimensional modeling of urban destinations that help identify landmarks and street junctions. Uconnect offers a full array of advanced user-friendly technology, real-time data and entertainment services.

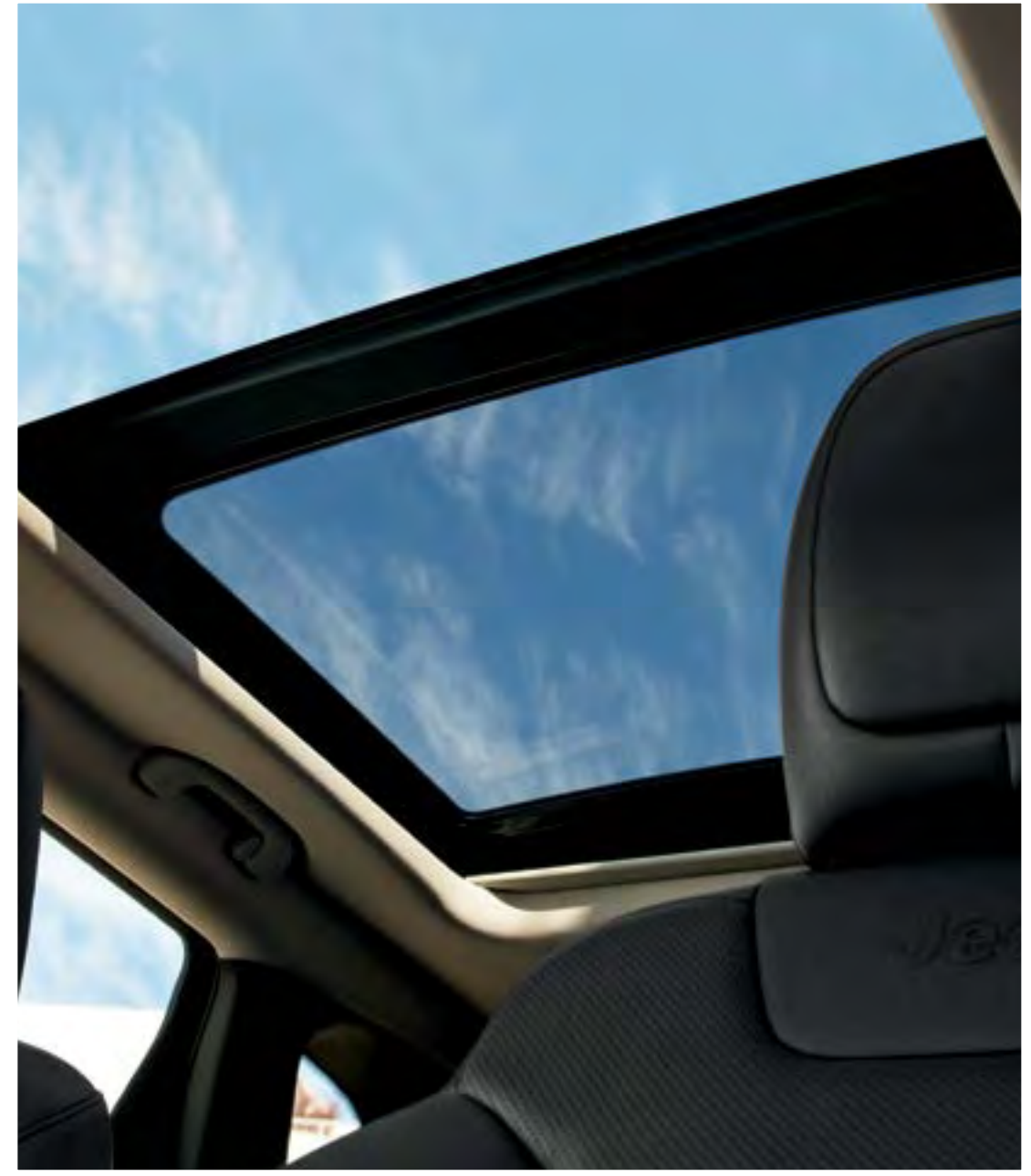
**COOL.** Relax with an interior palette inspired by the natural hues found in some of the world's most iconic landscapes, such as the warm browns of the Grand Canyon and the earth tones of Nepal. Cherokee offers interior trim options using exceptional colors, designs and textures as well as lush materials.



**CLEVER.** There's a place for everything within Cherokee's vast and convenient storage options. Case-in-point: a hidden, available in-seat compartment that lets you put valuables out of sight. A total of 19 cubbies, pockets and bins make this interior fun and functional.

**ROOM TO GROW.** Drivers can travel with up to four adult passengers, or two adults and two youngsters, and any combination in between. Cherokee's 60/40 split-folding rear seats can travel up to six inches fore or aft for adjustable leg-room and cargo flexibility.

**OPEN-AIR FREEDOM.** There's nothing like fresh sunshine to instill every mile with warm brilliance. Opt for the available CommandView® Dual-Pane Panoramic Sunroof and passengers in all rows will get more from every adventure, anywhere they go.





CHEROKEE BRINGS A RANGE OF COMMUNICATION AND ENTERTAINMENT SERVICES STRAIGHT INTO YOUR VEHICLE, ALL BUNDLED WITHIN A ROBUST UCONNECT SYSTEM. WITH SO MANY CONVENIENT OPTIONS TO CHOOSE FROM, DISCOVER HOW YOU WOULD LIKE TO CONNECT AT [DRIVEUCONNECT.COM](http://DRIVEUCONNECT.COM)



SiriusXM® All Access!<sup>17</sup> Enjoy commercial-free music, plus your favorite sports, news, talk and entertainment AND listen to your SiriusXM® favorites outside your vehicle by streaming your service online and on the app — it's all included in your 1-year trial subscription. Available.

## DISCOVER NEW PLACES\*

Find the best shopping, dancing, entertainment venues and restaurants. Available.

## SPEAK UP AND BE HEARD

Send and receive calls and texts<sup>18</sup> while driving safely with hands-free<sup>5</sup> phone capability. Available.

## HOST A WIFI HOTSPOT<sup>19</sup>

Upload and download, post and search — Uconnect<sup>®</sup> with WiFi<sup>19</sup> available from Mopar, lets you connect your devices to the Web.<sup>20</sup> Available.

## NAVIGATE TO ADVENTURE\*

Get turn-by-turn directions so you don't get lost along the way (unless you want to). Available.

## LISTEN TO MUSIC, TALK SHOWS AND SPORTS

Access a variety of genres, and save your favorite artists and songs with SiriusXM Satellite Radio.<sup>®</sup> One-year All Access<sup>17</sup> trial included. Available.

## ASSISTED IN EMERGENCIES

Reach 9-1-1 Call<sup>15</sup> operators and Roadside Assistance Call<sup>16</sup> with the touch of a button. Available.

## START YOUR CAR FROM AFAR

Get your engine running, unlock your door or flash your headlamps. Available.

## SEE INTO THE FUTURE

With SiriusXM<sup>®</sup> Travel Link<sup>®</sup> you'll get national and local weather forecasts — up to five days out. Five-year trial included on properly equipped vehicles. Available.

## NEW TO UCONNECT<sup>®</sup> 8.4

Customize your screen with six features and services using the **Drag & Drop Menu Bar**.

Use voice commands<sup>5</sup> to access 12 hands-free<sup>5</sup> features with iPhone<sup>®</sup> friendly **Siri Eyes Free**.<sup>†</sup>

Stay focused by rerouting calls, suppressing texts and enabling automated replies with **Do Not Disturb**. Available.



Limited in Billet Silver Metallic.



## THE DETAILS

Take a closer look at the features you'll love most. Discover what makes the 2016 Jeep® Cherokee so unique.



**2.4L TIGERSHARK® MULTIAIR®2 I-4 ENGINE:** With its optional PZEV (Partial Zero Emission Vehicle) rating, the Tigershark engine burns clean and lean while delivering a quiet and refined ride. Plus, for those with dreams of heading for aggressive off-road destinations, it takes its 184 hp and 171 lb-ft of torque and crushes it down to a boulder-pounding crawl ratio of 56:1 when paired with the available Jeep® Active Drive Lock 4WD system on the Trail Rated® Cherokee Trailhawk®.



**3.2L PENTASTAR® V6 ENGINE:** This available workhorse is designed to deliver the kind of power needed to support all-weather travel over any terrain. Demanding drivers will appreciate its 271 hp and 239 lb-ft of torque — enough to reach a best-in-class<sup>3</sup> towing power of up to 4,500 lb when properly equipped. This engine's pedigree includes being named one of Ward's "10 Best Engines" three years in a row.

ITS EFFICIENCY IS  
AS IMPRESSIVE  
AS ITS ADAPTABILITY.



**CLASS-EXCLUSIVE<sup>2</sup> 9-SPEED AUTOMATIC TRANSMISSION:** Quickly responsive upon acceleration, with smooth delivery of power between all nine gears. A unique set of four overdrive ratios help gain efficiencies while reducing overall noise and vibration. Thus, economies are maximized and performance is optimal at all times. You're instantly attuned to nearly any driving demand, both on- and off-road.

**INDEPENDENT SUSPENSION SYSTEM:** Designed to be smooth and quiet on-road, tough and nimble off-road. Utilizes high-strength steel, aluminum, and MacPherson struts — renowned for their strength and stability.

**BEST-IN-CLASS<sup>3</sup> TOWING:** When your Cherokee is equipped with the available 3.2L Pentastar V6 engine and the available Trailer Tow Group, you gain refined towing power with the engine's brawny 271 hp and 239 lb-ft of torque, plus an EPA-estimated 29 hwy mpg.\*



<b>Maximum Trailer Weight Rating</b> <i>(when equipped with available aftermarket Class II hitch)</i>	
2.4L I-4	2,000 lb
3.2L V6	2,000 lb
3.2L V6 with Trailer Tow Group	4,500 lb

**TRAIL RATED — A CURRENCY OF CAPABILITY:** Every Jeep vehicle bearing a Trail Rated badge is designed and built to Go Anywhere, Do Anything® and perform with exceptional 4WD capability. It must successfully pass five performance test categories: Traction, Articulation, Maneuverability, Ground Clearance and Water Fording!<sup>13</sup>



**SELEC-SPEED® CONTROL:** Pulling and pushing a full load requires control, especially when you're tackling off-road climbs and hill descents. Just press the Selec-Speed Control button to engage an array of integrated systems that can help your vehicle maintain a target speed of 1 to 5 mph while driving over obstacles and on uphill, level and downhill surfaces. This lets you focus on steering while making sure you safely navigate the road ahead. Standard on Cherokee Trailhawk.

\*Based on 2016 EPA-estimated 4x2 21 city mpg/29 hwy mpg. Actual mileage may vary.

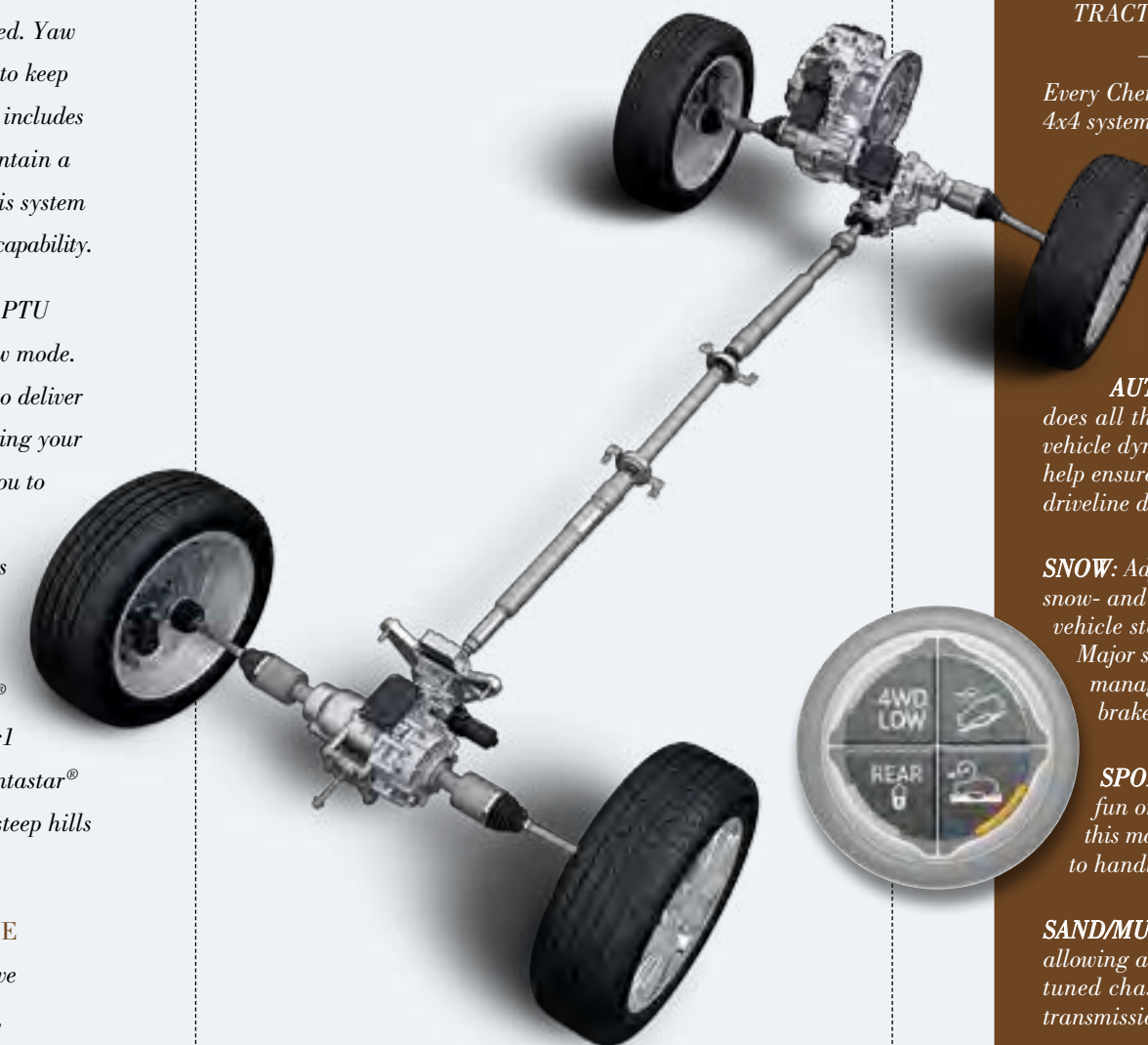
BEST-IN-CLASS<sup>1</sup>  
**4x4 CAPABILITY**

CHOOSE FROM THREE  
AVAILABLE 4x4 SYSTEMS

**JEEP® ACTIVE DRIVE I:** A fully automatic, single power transfer unit (PTU) delivers seamless operation in and out of 4WD at any speed. Yaw correction is automatic as well, helping to keep Jeep Cherokee stable at all times. Also, it includes brake traction control that works to maintain a balanced torque distribution, helping this system deliver an easy-to-use all-weather boost in capability.

**JEEP ACTIVE DRIVE II:** A two-speed PTU offers torque management and 4WD Low mode. This locks the front and rear driveshafts to deliver additional power at low speeds or for towing your toys. A driveline neutral switch enables you to hitchhike Cherokee to your RV and take it along. Additionally, off-roading benefits from a one-inch increase in ride height and an incredible crawl ratio of 56:1 when paired with the 2.4L Tigershark® MultiAir®2 I-4 engine, and a ratio of 48:1 when paired with the available 3.2L Pentastar® V6 engine, allowing Cherokee to climb steep hills and crawl over boulders with ease.

**TRAIL RATED® JEEP ACTIVE DRIVE LOCK:** Includes everything in Jeep Active Drive II, plus a locking rear differential, providing even more capability and strength for severe off-road conditions. Standard on all Jeep Cherokee Trailhawk® models.



DISPLAY YOUR TALENT  
FOR FINDING ADVENTURE.



**SELEC-TERRAIN®**  
TRACTION MANAGEMENT SYSTEM

Every Cherokee equipped with an available 4x4 system has a Jeep Selec-Terrain system, offering up to five settings of ultimate driving stability by coordinating 12 vehicle systems, including throttle, transmission, transfer case, traction control and Electronic Stability Control (ESC)!<sup>2</sup>

**AUTO:** In this mode, Selec-Terrain does all the work, automatically adjusting vehicle dynamics to best suit the road. To help ensure optimal efficiency, the rear driveline disengages when not needed.

**SNOW:** Adjusts for ultimate performance over snow- and ice-covered roads by maximizing vehicle stability and minimizing oversteer. Major systems auto-engaged and managed in this mode include antilock brakes and traction control.

**SPORT:** Feel like having a little more fun on winding country roads? Select this mode and you're automatically tuned to handle a more aggressive driving style.

**SAND/MUD:** Maximizes low-speed traction by allowing additional wheel-slip via specifically tuned chassis controls, differentials and transmission ratios.

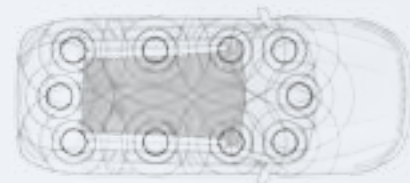
**ROCK:** Delivers Trail Rated 4WD Low capability thanks to its locking rear differential, allowing you to crawl over rugged terrain at appropriately safe speeds. Available.





THE SUN, MOON AND STARS — ALL WITHIN A COMFORTABLE VIEW.

COMMANDVIEW® DUAL-PANE PANORAMIC SUNROOF: It's more than an amazing way of looking at the world, it can take you to a new world altogether. Traveling to destinations with a confidence that only a Jeep® brand SUV can deliver, the 2016 Jeep Cherokee delivers a fully luxurious interior, available in a stunning world-color palette inspired by the hues found within the landscape surrounding Italy's Mount Vesuvius, for a look unlike any other. Opt in for the available CommandView Dual-Pane Panoramic Sunroof and passengers in all rows will get more from every adventure, anywhere they go.



ALPINE

PREMIUM AUDIO SYSTEM: Audiophiles can opt for Cherokee's premium 9-speaker sound system with an 8-inch subwoofer, designed in tandem with Alpine®, the leading manufacturer of high-performance mobile electronics. The system's 11 channels pump sound by way of 506 watts of power for a dynamic soundfest to inspire your music-filled travels.

KEYLESS ENTER 'N GO™:

No more fumbling for keys to get going. Keep the key fob in your purse or pocket and you can simply grab the door handle, climb in, press on the brake, press a button and shift into "GO." Available.

REMOTE START: Just press the button on your key fob a few minutes prior to takeoff, from as much as 200 feet away. You're ready to roll with a nicely heated or cooled cabin. Available.



INSPIRED BY THE WORLD: Our designers looked to the natural hues found in some of the world's most iconic landscapes from the majestic Grand Canyon to the mysterious magic of Morocco. There, they found inspiration that translates into stunning interiors crafted with lush materials and the most thoughtful details.

REFINED: Cherokee's sculpted interior has been designed for absolute beauty, with rich materials like available premium Nappa Leather trim with contrast stitching, flowing surfaces with soft-touch textures and leading-edge technology within easy reach.

DUAL-ZONE AUTOMATIC TEMPERATURE CONTROL (ATC):

Constantly adjusts air temperature inside the cabin to create separate customized environments for the driver and the front passenger. Available.

HEATED AND VENTILATED SEATS:

Add quick warmth on cool days and welcome relief when temperatures rise — a small fan gently circulates cool air via perforations within the front seat coverings. Available.



AN INTERIOR CONFIGURED TO SUIT YOU.

FIRST-CLASS COMFORT: The configurable 60/40 split-folding second-row seats can recline six degrees and adjust fore and aft, so rear-seat passengers can stretch out in comfort.

CLEVER STORAGE: Storage options abound, including a convenient bin on the instrument panel and a hidden in-seat compartment under the available fold-flat passenger seat.\*

\*Not intended for use by driver while vehicle is in motion. Always drive carefully.

BRILLIANTLY VERSATILE: Carry nearly any combination of people and cargo with the optional fold-flat front-passenger seat\* and the 60/40 split on the rear seatbacks.



JEEP® CARGO MANAGEMENT SYSTEM:

This modular system comes ready to accept many available add-on storage solutions, including a First-Aid Kit, Off-Road Kit, Cooler, Cargo Tote and Pet Kennel. All available from the Mopar® brand.



Available passenger-side in-seat storage.



Standard Jeep Cargo Management System with available accessories from Mopar®.

Properly secure all cargo.



UCONNECT® 8.4: With its large, 8.4-inch touchscreen, this available Uconnect system now offers even more convenience and safety features. Integrated Voice Command with Bluetooth,<sup>5</sup> hands-free phone, 3D navigation, SiriusXM® radio<sup>8</sup> (1-year trial), Uconnect Access<sup>6</sup> (1-year trial), SiriusXM Travel Link<sup>8</sup> and SiriusXM Traffic<sup>8</sup> (both with 5-year trials) are joined by some advanced, new features:

- Personalize your dashboard with the new **Drag & Drop Menu Bar**. You can highlight your top six favorite features and services so they're always in sight.

- Use Integrated Voice Command with Bluetooth<sup>5</sup> to access 12 hands-free features with **Siri Eyes Free** (compatible with Apple iPhone® 4s or later). Play music, dictate and send emails, set reminders, place phone calls, access turn-by-turn directions, post to social media and more.

- Remove distractions from calls and texts with help of the new **Do Not Disturb** feature. It enables you to route all incoming calls to voice mail and suppress texts, see a visual prompt of incoming calls and texts, or send an automated reply.

### UCONNECT ACCESS<sup>6</sup>

This suite of features and services is the next generation of in-vehicle connectivity, with the ease of Integrated Voice Command<sup>5</sup> with Bluetooth and fingertip control.

**9-1-1 CALL<sup>15</sup>** In the event of an emergency, a button on your rearview mirror instantly connects you with local authorities.

**ROADSIDE ASSISTANCE CALL<sup>16</sup>** The "Assist" button on your rearview mirror connects you to Roadside Assistance,<sup>16</sup> which automatically knows your vehicle and location. Additional fees may apply.

**STOLEN VEHICLE ASSISTANCE<sup>21</sup>** If your vehicle is ever stolen, Uconnect can provide its location to aid police recovery.

**THEFT ALARM NOTIFICATION<sup>22</sup>** Choose to receive a text or email alert anytime your vehicle's theft alarm is activated.

**VOICE TEXTING<sup>18</sup>** Drivers stay safely connected with Cloud-based voice texting<sup>18</sup> on compatible Bluetooth-enabled phones, allowing you to hear and dictate messages.

**WIFI HOTSPOT<sup>19</sup>** Create a mobile hotspot in and around your vehicle, so passengers can connect securely with wireless devices.

**INSTANT IN-VEHICLE ASSIST<sup>23</sup>** Questions about a Uconnect feature, app or your new Cherokee? Press the "Access" button to connect with the right source for answers.

**UCONNECT ACCESS<sup>6</sup> APP:** From virtually anywhere, use your computer or the custom smartphone app to remotely lock or unlock your vehicle, start the engine, or sound the horn and flash the lights.

**YELP<sup>®</sup>:** Conduct a real-time local search to find restaurants, coffee shops and other businesses sorted by rating and location.



**SIRIUSXM SATELLITE RADIO<sup>8</sup>** With the SiriusXM All-Access<sup>17</sup> package, you get every channel available on your satellite radio, including commercial-free music, sports, news, talk and entertainment. Plus, listen wherever you go on your portable devices with the SiriusXM App<sup>8</sup> which is included with your one-year trial. Available.



**SIRIUSXM TRAVEL LINK<sup>8</sup>** Receive National Weather Service-issued emergency alerts for flooding, winter weather, tornadoes and more. Weather radar provides information on storm direction, speed and track for a range of severe weather conditions. Current conditions and five-day forecasts help you adjust travel plans accordingly. Your first five years of SiriusXM Travel Link<sup>8</sup> are included.



**SIRIUSXM TRAFFIC<sup>8</sup>** With SiriusXM Traffic<sup>8</sup>, you can avoid congestion before you reach it. Get detailed information on traffic speed, accidents, construction, road closures and more, and you will get to your destination faster and more easily than ever before. Your first five years of SiriusXM Traffic<sup>8</sup> service are included. Available.



### CONFIGURABLE 7-INCH MULTI-VIEW DISPLAY: Fingertip

controls on your steering wheel can instantly scroll you through a selection of vehicle data displayed within your instrument panel on a



7-inch color screen.

Information includes navigation, capability data, performance statistics, vehicle dynamics and alerts.

## THERE'S SAFETY IN NUMBERS, LIKE OVER 70 STANDARD AND AVAILABLE SAFETY & SECURITY FEATURES.

### 10 STANDARD AIR BAGS<sup>4</sup>

Full-length side-curtain driver and front-passenger inflatable knee bolster air bags<sup>4</sup>, seat-mounted for front and rear occupants, side thorax air bags<sup>4</sup> and advanced multistage front air bags<sup>4</sup> all work in tandem to help provide protection. Standard.



### PARALLEL AND PERPENDICULAR PARK ASSIST<sup>7</sup>

This active guidance system controls steering automatically using ultrasonic sensors that help you ease into parking spots. Includes ParkSense<sup>®</sup> Front and Rear Park Assist<sup>7</sup> sensors. Available.



**ADAPTIVE CRUISE CONTROL WITH STOP AND GO (ACC+)<sup>9</sup>** Take the guesswork out of keeping a safe distance from the car ahead while cruising on the highway. The system automatically adjusts cruising speed to maintain a preset distance between you and the vehicle ahead and can bring Cherokee to a complete stop without driver intervention to help avoid a collision. Available.

### LANESENSE<sup>®</sup> LANE DEPARTURE WARNING WITH LANE KEEP ASSIST (LDW+)<sup>11</sup>

Provides a visual and audible warning should the vehicle drift outside of lane boundaries or if the driver's hands are off the wheel. Available.

### BLIND SPOT MONITORING<sup>10</sup> AND REAR CROSS-PATH DETECTION<sup>7</sup>

These systems monitor the space between you and other drivers. When a side or rear blind spot is encroached, you're notified via illuminated icons on sideview mirrors or an audible chime. Available.

**FULL-SPEED FORWARD COLLISION WARNING (FSPCW+)<sup>14</sup> WITH ACTIVE BRAKING:** Sensors detect when Cherokee may be approaching another vehicle too rapidly and send an audible and visual alert to the driver along with providing 1.5 seconds of brake assistance if the driver does not react in time. Available.



**ELECTRONIC STABILITY CONTROL (ESC)<sup>12</sup>** A network of safety sensors helps maintain vehicle control, providing instant aid should they detect you're veering off your intended path. ESC<sup>12</sup> coordinates Electronic Roll Mitigation (ERM), antilock brake system (ABS) and Brake Assist, All-Speed Traction Control and available Trailer Sway Control (TSC)<sup>12</sup>, calling upon them as needed. Standard.



**CHASSIS STRENGTH:** Cherokee delivers exceptional peace of mind with a hero's heart — a strong foundation constructed with 65 percent high-strength steel. Standard.

**RAIN BRAKE SUPPORT:** This system automatically helps maintain optimal braking by keeping brake rotors dry in rainy conditions, with assistance from ESC<sup>12</sup>. Standard.

**ELECTRONIC ROLL MITIGATION (ERM):** As an extension of ESC,<sup>12</sup> ERM uses sensors to anticipate potential risk situations. If things get rough, ERM takes immediate action to help you maintain control and stability. Standard.

**TRAILER SWAY CONTROL (TSC)<sup>12</sup>** Crosswinds and traffic hold no sway over you and your payload. As part of ESC,<sup>12</sup> TSC<sup>12</sup> helps keep you and the toys you tow safely on course.

**UCONNECT<sup>®</sup> ACCESS<sup>6</sup> WITH 9-1-1 CALL<sup>15</sup> AND ROADSIDE ASSISTANCE CALL<sup>16</sup>** Provides a direct connection to help with two

buttons conveniently located on the rearview mirror. Press "9-1-1" to reach a 9-1-1 call center,<sup>15</sup> or push "Assist" to quickly summon roadside help.<sup>16</sup> Available.



\*Certain features are not available while the vehicle is in motion.



## DISCOVER THE JEEP® LIFE

---

*MODELS, MEASUREMENTS AND RESOURCES*

---

*The road to legendary freedom starts here. Which path will you choose? Every Cherokee model comes with a range of resources to help turn dreamers into doers.*

# L I M I T E D

## STANDARD

- 2.4L I-4 Tigershark® MultiAir®2 9-speed transmission
- Exhaust system — Single rear with bright tip
- Power-locking fuel filler door
- Selec-Terrain® — Floor dial with 4 traction control settings (4x4 models only)
- Normal-duty suspension
- Accent/body-color fascias
- Grille — Chrome surround
- Active grille shutters
- Fog lamps
- Automatic bifunctional halogen projector headlamps
- LED daytime running headlamps (DRLs)
- Headlamps-off time delay
- Black headlamp bezels
- Body-color, power, manual foldaway mirrors with heating element, courtesy lamps and supplemental turn signals
- Bright roof rails
- 18-inch polished aluminum wheels
- Wiper system, front, variable/intermittent
- Windshield wiper de-icer
- Rear window wiper with washer
- 7-inch customer-configurable Multi-View Display
- Heated, leather-wrapped steering wheel with audio and speed controls
- Dual-Zone Automatic Temperature Control, includes humidity sensor and premium air filter
- Cargo area includes 8 tie-down loops
- Leather-trimmed heated front seats
- 8-way power driver's seat with 4-way power lumbar adjuster
- Air bags<sup>4</sup> — Advanced multistage, driver and front-passenger, supplemental front-seat side, supplemental side-curtain front/rear, supplemental rear-seat side, and driver and passenger inflatable knee bolster (10 total)
- Keyless Enter 'n Go™ (passive entry/push-button start)
- ParkView® Rear Back-Up Camera<sup>7</sup> with Dynamic Grid Lines
- Remote Start System
- Security alarm
- Trailer Sway Control (TSC)<sup>12</sup>
- Uconnect® 8.4
- Integrated Voice Command<sup>5</sup> with Bluetooth®
- SiriusXM® Satellite Radio<sup>8</sup> includes 1-year trial subscription
- 6 speakers

## AVAILABLE

- 2.4L PZEV (CA Emission States only) 9-speed transmission
- 3.2L Pentastar® V6 Variable Valve Timing (VVT), with Stop/Start feature and 9-speed transmission
- Dual rear exhaust with bright tips (packaged with 3.2L engine)
- Jeep® Active Drive I, single-speed 4WD
- Jeep Active Drive II, 2-speed 4WD
- CommandView® Dual-Pane Panoramic Sunroof — Full, power front, fixed rear
- Premium ventilated leather-trimmed seats with Nappa Leather, Axis II perforations and Nappa bolsters (available in Morocco — Black, Vesuvio — Jeep Brown/Indigo Blue or Nepal — Black/Light Frost Beige; packaged with Luxury Group)
- Tonneau cover
- Wireless charging pad (in upper tray of floor-console storage)
- Alpine® Premium Audio System with 9 speakers, subwoofer and 506-watt amplifier
- Uconnect 8.4 NAV includes SiriusXM Travel Link<sup>8</sup> and SiriusXM Traffic<sup>8</sup> 5-year trial subscriptions

**LUXURY GROUP:** Includes ventilated front seats, premium leather-trimmed seating, power liftgate, memory for radio, driver seat and mirrors, and High Intensity Discharge (HID) headlamps

**SAFETYTEC™ GROUP:** Includes Blind Spot Monitoring<sup>10</sup>/Rear Cross-Path Detection<sup>7</sup> and ParkSense® Rear Park Assist<sup>7</sup>

**TRAILER TOW GROUP:** Includes heavy-duty engine cooling (3.2L only), 3.517 final drive ratio (3.2L 4x4 only), auxiliary transmission oil cooler, trailer-tow wiring harness, Class III hitch receiver, 4- and 7-pin wiring harness and full-size spare tire

**TECHNOLOGY GROUP:** Includes Advanced Brake Assist, Full-Speed Forward Collision Warning with Active Braking<sup>14</sup> LaneSense® Lane Departure Warning with Lane Keep Assist<sup>11</sup> rain-sensing windshield wipers, Auto High-Beam Headlamp Control, Adaptive Cruise Control with Stop and Go<sup>9</sup>, Parallel and Perpendicular Park Assist<sup>7</sup> and ParkSense Front and Rear Park Assist<sup>7</sup> (must have SafetyTec Group)



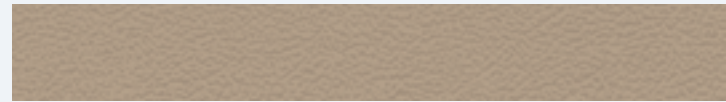
18-inch Polished Aluminum (standard)



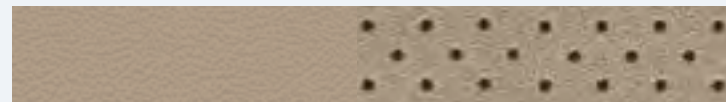
Nappa Leather seating surfaces with Light Frost Beige accent stitching: Morocco — Black (standard)



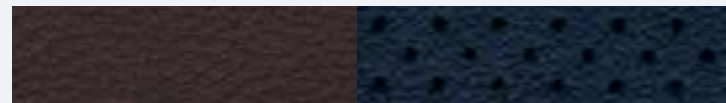
Nappa Axis II Perforated Leather seating surfaces with Light Frost Beige accent stitching: Morocco — Black (available)



Nappa Leather seating surfaces: Nepal — Black/Light Frost Beige (standard)



Nappa Axis II Perforated Leather seating surfaces: Nepal — Black/Light Frost Beige (available)



Nappa Leather seating surfaces with Pearl accent stitching: Vesuvio — Jeep Brown/Indigo Blue (standard)



Nappa Axis II Perforated Leather seating surfaces with Pearl accent stitching: Vesuvio — Jeep Brown/Indigo Blue (available)



# T R A I L H A W K®

## STANDARD

- 2.4L I-4 Tigershark® 9-speed transmission
- Exhaust system — Single rear with bright tip
- Jeep® Active Drive Lock, 2-speed 4WD system with rear locker
- Power-locking fuel filler door
- Selec-Speed® Control
- Selec-Terrain® — Floor dial with 5 traction control settings
- Suspension — Off-road lifted with skid plates
- Off-road accent-colored fascias with rear fascia skid plate appliqué
- Dark Neutral Gray exterior accents — Grille surrounds, exterior mirrors, lower fascia, roof rails, badging
- Matte Black hood decal
- Fog lamps
- Automatic bifunctional halogen projector headlamps
- Black headlamp bezels
- Power, manual foldaway accent-color mirrors
- 17-inch polished/painted off-road aluminum wheels (packaged with OWL All-Terrain tires)
- Off-road wheel flares
- Wiper system, front, variable/intermittent
- 7-inch Multi-View Display
- Air conditioning
- Cargo area includes 8 tie-down loops and cargo net
- Rearview mirror with microphone
- Fabric/leather-trimmed seats with Rivet insert, Nappa bolsters and Red accent stitching (available in Morocco — Black)
- 6-way manual driver and passenger seats
- 2nd-row 60/40 folding seats
- Leather-wrapped steering wheel
- Full-size spare tire
- All-season floor mats
- Air bags<sup>4</sup> — Advanced multistage driver and front-passenger, supplemental front-seat side, supplemental side-curtain front/rear, supplemental rear-seat side, and driver and passenger inflatable knee bolster (10 total)
- Hill Start Assist
- Electronic Stability Control<sup>12</sup> and Trailer Sway Control<sup>12</sup>
- Keyless entry with panic button
- ParkView® Rear Back-Up Camera<sup>7</sup> with Dynamic Grid Lines
- Uconnect® 8.4
- Integrated Voice Command<sup>5</sup> with Bluetooth®
- SiriusXM® Satellite Radio<sup>8</sup> includes 1-year trial subscription
- 6 speakers

## AVAILABLE

- 2.4L PZEV (CA Emission States only) 9-speed transmission
- 3.2L Pentastar® V6 Variable Valve Timing (VVT) with Stop/Start feature and 9-speed transmission
- Dual rear exhaust with bright tips (packaged with 3.2L engine)
- CommandView® Dual-Pane Panoramic Sunroof — Full, power front, fixed rear (must have Comfort/Convenience Group)
- 17-inch Jet Black Semi-Gloss off-road aluminum wheels (packaged with OWL All-Terrain tires)
- Tonneau cover
- SiriusXM® Travel Link<sup>8</sup> and SiriusXM Traffic<sup>8</sup> with 5-year trial subscriptions (includes Uconnect 8.4)

## COLD WEATHER GROUP:

Includes windshield wiper de-icer, engine block heater, remote start, heated mirrors, heated steering wheel, heated front seats and Trailhawk Off-Road Accessory Kit

## COMFORT/CONVENIENCE GROUP:

Includes security alarm, remote start, power liftgate, rearview auto-dimming mirror, air conditioning with Dual-Zone Automatic Temperature Control, universal garage door opener, power 8-way driver seat with power 4-way driver lumbar adjuster, Keyless Enter 'n Go (passive entry/push-button start), humidity sensor and premium air filtration system

## LEATHER INTERIOR GROUP:

Includes leather-trimmed seating, heated steering wheel, power 8-way driver seat with power 4-way driver lumbar adjuster and heated front seats

## SAFETYTEC™ GROUP:

Includes courtesy lamps and supplemental turn signals on heated exterior mirrors, Blind Spot Monitoring<sup>10</sup>/Rear Cross-Path Detection<sup>7</sup> and ParkSense® Rear Park Assist<sup>7</sup>

## TECHNOLOGY GROUP:

Includes Advanced Brake Assist, Full-Speed Forward Collision Warning with Active Braking<sup>14</sup> LaneSense® Lane Departure Warning with Lane Keep Assist<sup>11</sup> rain-sensing windshield wipers, Auto High-Beam Headlamp Control, Adaptive Cruise Control with Stop and Go<sup>9</sup>, Parallel and Perpendicular Park Assist<sup>7</sup> and ParkSense Front and Rear Park Assist<sup>7</sup> (must have Comfort/Convenience Group and must have SafetyTec Group)

## TRAILER TOW GROUP:

Includes Trailhawk Off-Road Accessory Kit, heavy-duty engine cooling (3.2L only), 3.517 final drive ratio (3.2L 4x4 only), auxiliary transmission oil cooler, trailer-tow wiring harness, Class III hitch receiver and 4- and 7-pin wiring harness

## VENTILATED/MEMORY SEAT GROUP:

Includes ventilated front seats, premium leather-trimmed seats, and memory for radio, driver seat and exterior mirrors (must have Leather Interior Group)



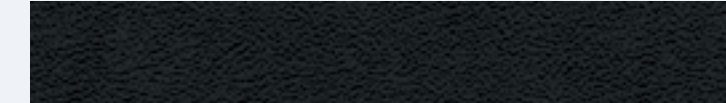
17-inch Polished/Painted Off-road Aluminum (standard)



17-inch Jet Black Semi-Gloss Off-road Aluminum (available)



Nappa Leather seating surfaces with Rivet Cloth and Ruby Red accent stitching: Morocco — Black (standard)



Nappa Leather seating surfaces with Ruby Red accent stitching: Morocco — Black (available)



Nappa Leather seating surfaces with Ruby Red accent stitching: Grand Canyon — Jeep Brown (available)



Nappa Axis II Perforated Leather seating surfaces with Ruby Red accent stitching: Morocco — Black (available)



Nappa Axis II Perforated Leather seating surfaces with Ruby Red accent stitching: Grand Canyon — Jeep Brown (available)

# L A T I T U D E

## STANDARD

- 2.4L I-4 Tigershark® MultiAir®2 9-speed transmission
- Exhaust system — Single rear with bright tip
- Power-locking fuel filler door
- Selec-Terrain® — Floor dial with 4 traction control settings (4x4 models only)
- Suspension — Normal-duty
- Fascias — Accent/body-color
- Grille — Chrome surround
- Active grille shutters
- Fog lamps
- Automatic bifunctional halogen projector headlamps
- LED daytime running headlamps
- Headlamps-off time delay
- Black headlamp bezels
- Power, manual foldaway body-color mirrors
- Bright roof rails
- 17-inch painted aluminum wheels
- Wiper system — Front, variable/intermittent
- 3.5-inch high-resolution Thin Film Transistor (TFT) cluster
- Air conditioning
- Cargo area includes 8 tie-down loops
- Rearview mirror with microphone
- 115-volt power outlet
- Deep-tint privacy glass
- Cloth seats with Gridlock insert and Brook II Cloth bolsters (available in Morocco – Black and Nepal – Black/Light Frost Beige)
- Front manual 6-way driver and passenger seats
- Front-passenger forward fold-flat seat with under-cushion storage
- 2nd-row 60/40 folding seats

- Leather-wrapped steering wheel with speed control
- Air bags<sup>4</sup> — Advanced multistage driver and front-passenger, supplemental front-seat side, supplemental side-curtain front/rear, supplemental rear-seat side, and driver and passenger inflatable knee bolster (10 total)
- Electronic Stability Control (ESC)<sup>12</sup> includes vehicle stability management system, Electronic Roll Mitigation (ERM), all-speed traction control, Brake Assist and four-channel antilock brake system (ABS)
- Keyless entry with panic button
- Hill Start Assist (HSA)
- ParkView® Rear Back-Up Camera<sup>7</sup> with Dynamic Grid Lines
- Trailer Sway Control (TSC)<sup>12</sup>
- Uconnect® 5.0 color touchscreen radio with integrated HVAC controls
- Integrated Voice Command<sup>5</sup> with Bluetooth®

## AVAILABLE

- 2.4L PZEV (CA Emission States only) 9-speed transmission
- 3.2L Pentastar® V6 Variable Valve Timing (VVT) with Stop/Start feature and 9-speed transmission
- Dual rear exhaust with bright tips (packaged with 3.2L engine)
- Jeep® Active Drive I, single-speed 4WD system
- Jeep Active Drive II, 2-speed 4WD system, includes off-road, lifted suspension
- CommandView® Dual-Pane Panoramic Sunroof — Full, power front, fixed rear (must have Comfort/Convenience Group)
- Tonneau cover
- Power 8-way driver seat

- Alpine® Premium Audio System with 9 speakers, subwoofer and 506-watt amplifier
- SiriusXM® Satellite Radio,<sup>8</sup> includes 1-year trial subscription (packaged with Comfort/Convenience Group or with Uconnect 8.4)

- Uconnect 8.4

**ALTITUDE PACKAGE:** Includes Gloss Black roof rails, Gloss Black fascia appliqué, Black gloss badging, Black daylight openings, Gloss Black Grille surrounds, 18-inch Gloss Black 5-spoke aluminum wheels

**COLD WEATHER GROUP:** Includes windshield wiper de-icer, engine block heater, remote start, heated mirrors, all-season floor mats, heated steering wheel and heated front seats

**COMFORT/CONVENIENCE GROUP:** Includes cargo net, security alarm, remote start, power liftgate, rearview auto-dimming mirror, air conditioning with Dual-Zone Automatic Temperature Control, universal garage door opener, power 8-way driver seat with power 4-way driver lumbar adjuster, SiriusXM Satellite Radio,<sup>8</sup> Keyless Enter 'n Go (passive entry/push-button start), humidity sensor and premium air filtration system

**SAFETYTEC™ GROUP:** Includes courtesy lamps and supplemental turn signals on heated exterior mirrors, Blind Spot Monitoring<sup>10</sup>/Rear Cross-Path Detection<sup>7</sup> and ParkSense® Rear Park Assist<sup>7</sup>

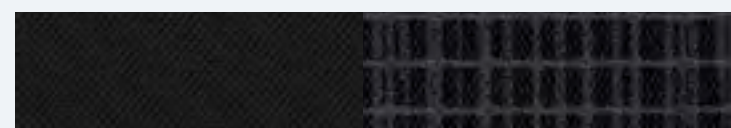
**TRAILER TOW GROUP:** Includes heavy-duty engine cooling (3.2L only), 3.517 final drive ratio (3.2L 4x4 only), auxiliary transmission oil cooler, trailer-tow wiring harness, Class III hitch receiver, 7- and 4-pin wiring harness and full-size spare tire



17-inch Painted Aluminum (standard)



18-inch Gloss Black 5-spoke Aluminum (available)



Brook II Cloth/Gridlock Cloth: Morocco – Black (standard)



Brook II Cloth/Gridlock Cloth: Nepal – Black/Light Frost Beige (standard)



# S P O R T

## STANDARD

- 2.4L I-4 Tigershark® 9-speed transmission
- Exhaust system — Single rear with bright tip
- Power-locking fuel filler door
- Selec-Terrain® — Floor dial with 4 traction control settings (4x4 models only)
- Normal-duty suspension
- Fascias — Accent/body-color
- Grille — Chrome surround
- Active grille shutters
- Bifunctional halogen projector headlamps
- Black headlamp bezels
- Headlamps-off time delay
- LED daytime running headlamps
- Power, manual foldaway Black mirrors
- 17-inch full-face steel wheels
- Wiper system, front, variable/intermittent
- 3.5-inch high-resolution Thin Film Transistor (TFT) cluster
- Air conditioning
- Cargo area includes 8 tie-down loops
- Power windows, driver one-touch down
- Rearview mirror with microphone
- Cloth seats with Portland Cloth insert with Brook II Cloth bolsters (available in Morocco – Black and Nepal – Black/Light Frost Beige)
- Front manual 6-way driver and passenger seats
- 2nd-row 60/40 folding seats
- Urethane steering wheel with speed control

- Air bags<sup>4</sup> — Advanced multistage driver and front-passenger, supplemental front-seat side, supplemental side-curtain front/rear, supplemental rear-seat side, and driver and passenger inflatable knee bolster (10 total)
- Electronic Stability Control (ESC)<sup>12</sup> includes vehicle stability management system, Electronic Roll Mitigation (ERM), all-speed traction control, Brake Assist and four-channel antilock brake system (ABS)
- Driver and front-passenger active head restraints<sup>23</sup>
- Hill Start Assist (HSA)
- Keyless entry with panic button
- Trailer Sway Control (TSC)<sup>12</sup>
- 6 speakers
- Uconnect® 5.0
- Media center/electronics storage with power connections
- Integrated Voice Command<sup>5</sup> with Bluetooth®

## AVAILABLE

- 2.4L PZEV (CA Emission States only) 9-speed transmission
- 3.2L Pentastar® V6 Variable Valve Timing (VVT) with Stop/Start feature and 9-speed transmission
- Jeep® Active Drive I, single-speed 4WD system
- Tonneau cover
- ParkView® Rear Back-Up Camera<sup>7</sup> with Dynamic Grid Lines and ParkSense® Park Assist<sup>7</sup>
- Security alarm
- SiriusXM® Satellite Radio,<sup>8</sup> includes 1-year trial subscription

## COLD WEATHER GROUP:

Includes windshield wiper de-icer, engine block heater, remote start, heated mirrors, all-season floor mats, heated steering wheel, heated front seats, air conditioning, steering wheel-mounted audio controls and leather-wrapped steering wheel

**TRAILER TOW GROUP:** Includes heavy-duty engine cooling (3.2L only), 3.517 final drive ratio (3.2L 4x4 only), auxiliary transmission oil cooler, trailer-tow wiring harness, Class III hitch receiver, 4- and 7-pin wiring harness and full-size spare tire

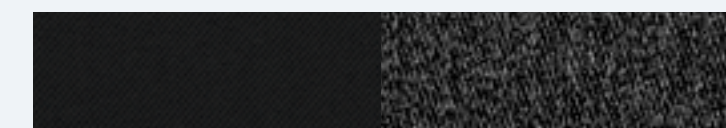
**SPORT APPEARANCE GROUP:** Includes Gloss Black roof rails and 17-inch painted aluminum wheel



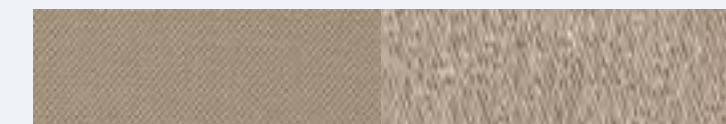
17-inch Full-face Steel (standard)



17-inch Painted Aluminum (available)



Brook II Cloth/Portland Cloth: Morocco – Black (standard)



Brook II Cloth/Portland Cloth: Nepal – Black/Light Frost Beige (standard)



C O L O R S & S P E C I F I C A T I O N S

Brilliant Black Crystal Pearl

Rhino\*

Granite Crystal Metallic†

Billet Silver Metallic

True Blue Pearl

Deep Cherry Red Crystal Pearl

Mango Tango\*

Eco Green Pearl

Light Brownstone Pearl

Bright White

Ferns

EXTERIOR DIMENSIONS

(inches unless otherwise specified)

	Jeep® Active Drive I	Jeep Active Drive II	Jeep Active Drive Lock
Wheelbase	106.26	106.3	107.0
Overall Length	182	182	182
Overall Width	73.2	73.2	74.9
Track, Front	62.2	62.2	63.5
Track, Rear	61.9	61.9	63.5
Overall Height (with roof rack)	65.7	66.2	67.3
Ground Clearance	5.9	7.9	8.2
Approach Angle (with air dam) (degrees)	16.7	18.9	21.0
Breakover Angle (degrees)	17.7	19.5	21.7
Departure Angle (degrees)	24.6	25.0	27.3
Water Fording <sup>‡</sup>	N/A	19	20

CAPACITIES/WEIGHTS

(4x2/4x4/4x4 Lock; pounds unless noted)

Fuel Tank (gal)	15.8
Base Curb Weight	
2.4L	3,663 / 3,947 / 4,018
3.2L	3,788 / 4,041 / 4,105
Payload Capacity (with all occupants and cargo)	1,000

INTERIOR

(inches unless otherwise specified, front/rear)

Seating Capacity	2 / 3 adults
Head Room (without sunroof)	39.4 / 38.5
Leg Room	41.1 / 40.3
Shoulder Room	57.6 / 55.1
Hip Room	53.8 / 49.9
Recliner Range (degrees)	
8 to 78 manual, 8 to 55.25 powered / 19.25 to 25.25	
Cargo Volume (cu ft)	49.47
Rear Seats Up	24.6
Rear Seats Folded	54.9



\*Trailhawk only.

†Not available on Sport.

POWERTRAIN

Engine	2.4L I-4	3.2L V6
Displacement (cu in)	144	197.7
Horsepower (SAE net hp @ rpm – estimated)	184 @ 6,400	271 @ 6,500
Torque (SAE net lb-ft @ rpm)	171 @ 4,600	239 @ 4,400
Axle Ratio (:1) (standard)	3.73	3.25
Fuel System	Sequential multipoint electronic returnless	Sequential multipoint electronic returnless

TRANSMISSION

9-speed automatic transmission with Electronic Range Select (ERS) \_\_\_\_\_ Std.

DRIVE SYSTEMS

Jeep Active Drive I, single-speed 4WD	_____ Opt.
Jeep Active Drive II, 2-speed 4WD	_____ Opt.
Jeep Active Drive Lock, 2-speed 4WD with rear locker	_____ Std. on Trailhawk®

BODY/SUSPENSION

Suspension  
Front \_\_\_\_\_ MacPherson struts, long-travel coil springs, one-piece aluminum subframe, aluminum lower control arms and stabilizer bar

Rear \_\_\_\_\_ 4-link rear suspension with trailing arm, aluminum lateral links, isolated high-strength steel rear cradle, coil springs and stabilizer bar

Steering \_\_\_\_\_ Power rack and pinion, electric

Overall Ratio (:1)  
4x2 and 4x4 \_\_\_\_\_ 15.15  
4x4 Lock \_\_\_\_\_ 15.36

Turns (lock-to-lock)  
4x2 and 4x4 \_\_\_\_\_ 2.56  
4x4 Lock \_\_\_\_\_ 2.67

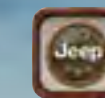
Turning Diameter (curb-to-curb) (ft)  
4x2 \_\_\_\_\_ 37.6 (11.5)  
4x4 \_\_\_\_\_ 37.7 (11.5)  
4x4 Lifted \_\_\_\_\_ 38.0 (11.6)  
Off-Road \_\_\_\_\_ 38.1 (11.6)

Brake System:  
Front \_\_\_\_\_ 13 x 1.1 vented rotor with 2.36 single-piston floating caliper

Rear \_\_\_\_\_ 13 x 1.1 vented rotor with 1.89 twin-piston floating caliper (available)  
\_\_\_\_\_ 10.95 x 0.47 solid rotor with 1.5 single-piston floating caliper

\_\_\_\_\_ 12.6 x 0.47 solid rotor with 1.69 single-piston floating caliper (available)

Electronic Stability Control (ESC)<sup>‡</sup>  
4-channel, 4-wheel antilock with active wheel-speed, vehicle-speed, steering wheel-angle, yaw-rate and lateral-acceleration sensors, vehicle stability management with two-stage activation switch, all-speed traction control, Brake Assist, Electronic Roll Mitigation (ERM) and Electronic Brake-Force Distribution (EBD)



Jeep Gear

**JEEP, SOCIAL ADVENTURES:** Expand your horizons to include authentic and active Jeep online communities. Post stories, share photos, watch videos and get the latest news from Jeep gearheads and engineers. Fellow Jeep enthusiasts are waiting to hear from you on Facebook, Twitter, Google+, Instagram and Pinterest and you can see the latest videos on YouTube. Tune in and get out into the virtual world where thrilling adventures are happening every single day.

[facebook.com/Jeep](https://facebook.com/Jeep)  
[twitter.com/Jeep](https://twitter.com/Jeep)  
[plus.google.com/+Jeep](https://plus.google.com/+Jeep)  
[instagram.com/Jeepofficial](https://instagram.com/Jeepofficial)  
[pinterest.com/Jeep](https://pinterest.com/Jeep)  
[youtube.com/TheJeepChannel](https://youtube.com/TheJeepChannel)

**GO MOBILE:** Take a multimedia tour of your vehicle on your mobile device. Log on to the jeep.com mobile site for a comprehensive, at-a-glance review of what you need to know about your Jeep vehicle. Experience visual and interactive demonstrations of the entire lineup, gaining access to product information at your fingertips, wherever you go.

**JEEP BADGE OF HONOR:** Introducing a new online community that invites off-roading fans to sign in, sign up, download the smartphone app and check in to legendary off-road trails across the U.S.A. earmarked by the Jeep Badge of Honor. Members can discover special trails and maps, earn Trail Points and ranks within the community, share photos and learn more about Jeep Trail Ratings. Connect with fellow Jeep vehicle owners and like-minded friends at [jeep.com/badge-of-honor](http://jeep.com/badge-of-honor)

**JEEP JAMBOREES:** For those who are driven by an adventurous spirit, we invite you to join us on the trail. You can head for parts unknown or return to fun, familiar places. Jeep Jamboree U.S.A. offers off-road adventure weekends that bring together the outdoors, down-to-earth people and their Jeep 4WD vehicles. We invite you to explore America's remote backcountry, where great friendships and memories are made. [jeepjamboreeusa.com](http://jeepjamboreeusa.com)

**JEEP GEAR:** Uncover an extensive line of fun that's been developed exclusively for the Jeep brand enthusiast. From authentic wearables to unique gifts, all items are as rugged and durable as your Jeep vehicle. Express your true nature. Learn more at [jeep.com/gear](http://jeep.com/gear)





#### CARRY ON WITH STYLE

Now it's easy to get cargo-area clutter under control. Mopar® introduces a host of stylish — and interchangeable — storage solutions and cargo-carrying systems. Each one attaches securely to Jeep® Cherokee's standard Cargo Management Bar. Mopar also offers a complete range of Authentic Jeep Accessories designed to help you live every adventure to the fullest, including racks, carriers, electronics and so much more.

< PET KENNEL\*

< FOLDABLE COOLER\*

< TRAILHAWK® OFF-ROAD ACCESSORY KIT\*

< COLLAPSIBLE CARGO TOTE\*

< CARGO MAT\*

< HITCH-MOUNT BIKE CARRIER\*

visit [MOPAR.COM](http://MOPAR.COM)

#### AUTHENTIC JEEP® ACCESSORIES

Whether you're climbing rugged hills or cruising smooth highways, raise the profile and capability of your Cherokee with Authentic Jeep® Accessories from Mopar®. You can count on these quality-engineered parts and accessories to keep your Cherokee as authentic as the day you bought it. For a true, seamless fit and finish, exact color matches and high-quality materials, it's smart to choose Mopar for the life of your ride. In addition, your ownership experience is supported mile after mile with our expert technicians, Mopar Vehicle Protection® plans, Express Lane Service for a quick oil change and the online Mopar Owner Connect website (register at [owners.jeep.com](http://owners.jeep.com)). See your Jeep dealer, or visit [mopar.com](http://mopar.com) for more information.



Sport shown in Bright White with Authentic Jeep Accessories by Mopar including Sport Utility Bars and Roof-Mount Water Sports Carrier.

\*Properly secure all cargo.

HOW FAR WOULD YOU GO  
*if you could go anywhere?*



Trailhawk® in Bright White.

THE JEEP® BRAND OFFERS SOME OF THE BEST OWNERSHIP SUPPORT PROGRAMS AVAILABLE ANYWHERE.

5 YEAR/60,000 MILE  
POWERTRAIN LIMITED WARRANTY

**WARRANTIES:** Jeep vehicles are covered by a 3-Year/36,000-Mile Basic Limited Warranty (excludes normal maintenance and wear items), as well as a 5-Year/60,000-Mile Powertrain Limited Warranty that is fully transferable. See your dealer for complete details and a copy of the 5-Year/60,000-Mile Powertrain Limited Warranty.



**MOPAR VEHICLE PROTECTION®:** Mopar Vehicle Protection has a vested interest in your satisfaction and owner experience with your new Jeep brand vehicle. This is the only extended protection provider backed by the manufacturer, FCA US LLC. We stand behind every Mopar Vehicle Protection plan with certified, factory-trained technicians and the use of authentic Mopar® parts. Your plan is honored at over 2,600 dealerships within the United States, Canada, Puerto Rico and Mexico. Be sure to ask for a Mopar Vehicle Protection plan at your dealership, call (800) 442-2666 or visit [moparvehicleprotection.com](http://moparvehicleprotection.com)



**MOPAR OWNER CONNECT: STAY CONNECTED.** Your Jeep brand vehicle ownership gives you the credentials to access extensive vehicle information, service and maintenance records, recall notifications and special offers through whatever device you prefer — computers, smartphones or tablets! Register your Jeep brand vehicle at [owners.jeep.com](http://owners.jeep.com) or download the Jeep Vehicle Owner's app for free at either the Apple or Google Play stores.



**AUTOMOBILITY:** The FCA US LLC Automobility Program provides aftermarket reimbursement incentives on adaptive vehicle upfit equipment to help provide safe and reliable vehicle modifications, enhancing accessibility for all people. For more information, call (800) 255-9877 or visit [chryslerautomobility.com](http://chryslerautomobility.com)



**JEEP® MASTERCARD®:** Earn 3 points per \$1 on qualifying purchases made at FCA US LLC dealerships, 2 points per \$1 on qualifying travel purchases and 1 point per \$1 on qualifying purchases everywhere else with the new Jeep MasterCard. Points may be redeemed at your local dealership for cash off your new or used vehicle, accessories, parts or service — including your next oil change. Or choose from hundreds of other rewards, including travel, cash back to your account, merchandise or gift cards.\* For more information or to apply, visit [jeepcard.com](http://jeepcard.com)



# Jeep.

## JEEP.COM (800) 925-JEEP

(1) Best-in-class 4x4 capability based on Jeep Cherokee offering two-speed power transfer unit (PTU) with rear locking axle, low-range 4x4 capability, exclusive Jeep Selec-Terrain with five settings (including snow). (2) Jeep's "Mid-Size SUV" sub-segmentation based on 14MY cross-shop activity: Ford Escape, Honda CR-V, Hyundai Santa Fe Sport (five-passenger), Subaru Forester, Toyota RAV4, Chevrolet Equinox and Kia Sorento. Excludes vehicles with third-row seating. (4) The Advanced Front Air Bags in this vehicle are certified to the new U.S. Federal regulations for Advanced Air Bags. Children 12 years old and younger should always ride buckled up in a rear seat. Infants in rear-facing child restraints should never ride in the front seat of a vehicle with a passenger front air bag. All occupants should always wear their lap and shoulder belts properly. (5) Requires a mobile phone equipped with the Bluetooth Hands-Free Profile. Visit UconnectPhone.com for system and device compatibility. (6) Uconnect Access is available only on equipped vehicles purchased within the contiguous United States plus Alaska. Services can only be used where cellular coverage is available, see coverage map for details. For a complete list of Uconnect Access services, please visit [http://www.driveuconnect.com/features/uconnect\\_access/packages/](http://www.driveuconnect.com/features/uconnect_access/packages/). Vehicle must be registered for Uconnect Access and fulfill minimum subscription requirement. (7) Always look before proceeding. An electronic drive aid is not a substitute for conscientious driving. Always be aware of your surroundings. (8) SiriusXM subscriptions for audio and data services are sold by SiriusXM to follow your trial subscription. **If you decide to continue listening after your trial, the subscription plan you choose will automatically renew thereafter and you will be charged according to your chosen payment method at then-current rates.** Fees and taxes apply. To cancel, you must call SiriusXM at 1-866-635-2349. See the SiriusXM Customer Agreement for complete terms and more information at [www.siriusxm.com](http://www.siriusxm.com). All fees and programming subject to change. Your equipment and features for SiriusXM services will vary depending upon the vehicle you select may be limited in select markets. (9) This system is a driver convenience system, not a substitute for active driver involvement. The driver must remain aware of traffic conditions and be prepared to use the brakes to avoid collisions. (10) Always check visually for vehicles prior to changing lanes. (11) This system is a driver convenience system, not a substitute for active driver involvement. The driver must remain aware of traffic conditions and maintain control of the vehicle. (12) No system, no matter how sophisticated, can repeal the laws of physics or overcome careless driving actions. Performance is limited by available traction, which snow, ice and other conditions can affect. When the ESC warning lamp flashes, the driver needs to use less throttle and adapt speed and driving behavior to prevailing road conditions. Always drive carefully, consistent with conditions. Always wear your seat belt. (13) Do not attempt water fording unless depth is known and consistent with the vehicle's water fording rating in the Owner's Manual. Traversing water can cause damage that may not be covered by the new vehicle warranty. Always off-road responsibly in approved areas. (14) This system is not intended to avoid collisions on its own, nor can FCW detect every type of potential crash. The driver must remain aware of traffic conditions and prepared to brake and steer to avoid potential collisions at all times. (15) The 9-1-1 Call button will connect you directly with Emergency Assistance. If you accidentally press the button, you have 10 seconds to cancel the call by either pressing the 9-1-1 button on the rearview mirror or the Cancel button on the Uconnect touchscreen. (16) Provides direct-dial access to Roadside Assistance Service. Vehicle must be within the United States, have network coverage and must be registered with Uconnect Access with an active subscription that includes the applicable feature. Additional roadside assistance charges may apply. Check warranty for details. (17) SiriusXM audio and data services each require a subscription after the trial included with the new vehicle purchase, sold separately or as a package, by SiriusXM Radio Inc. If you decide to continue service after your trial, the subscription plan you choose will automatically renew thereafter and you will be charged according to your chosen payment method at then-current rates. Fees and taxes apply. To cancel, you must call SiriusXM at 1-866-635-2349. See SiriusXM Customer Agreement for complete terms at [www.siriusxm.com](http://www.siriusxm.com). All fees and programming subject to change. (18) Voice Text Reply and Voice Texting features require a compatible mobile device enabled with Bluetooth Message Access Profile (MAP). iPhone and some other smartphones do not currently support Bluetooth MAP. Visit [www.UconnectPhone.com](http://www.UconnectPhone.com) for system and device compatibility. Ensure MAP is ON and incoming message notification is enabled. Vehicle must be registered for Uconnect Access and you must fulfill minimum subscription requirements. Also requires the use of a compatible smartphone that supports text messaging and Bluetooth. Check UconnectPhone.com for device compatibility. (19) WiFi subscription required. Vehicle must be registered with Uconnect Access and fulfill minimum subscription requirements. Vehicle must be properly equipped and in active and usable cellular range for WiFi usage. WiFi Hotspot does not enable direct communication between multiple in-vehicle devices. Factors affecting the performance of WiFi Hotspot include: cellular network, signal strength and quality, time of day, number of channels used by the service provider, type of connection, number of clients using WiFi Hotspot and client device. This feature is not intended for use by the driver while the vehicle is in motion. Always drive safely. (20) Uconnect Web feature is not intended for use by the driver while the vehicle is in motion. Always drive carefully. Subscription required. (21) If you have this feature and have reported your vehicle as stolen to an appropriate law enforcement agency, Uconnect will try to locate your vehicle after receiving proper documents and once law enforcement contacts Uconnect Customer Care. Uconnect may refuse to locate your vehicle if you do not provide the requested information or documents. Always notify law enforcement if your vehicle is stolen and do not attempt to recover it on your own. (22) Vehicle must be registered with Uconnect Access and fulfill minimum subscription requirements. Vehicle must also be properly equipped and in an active and usable cellular range. Theft Alarm Notification is only available on factory-installed alarms. (23) Always sit properly with the head restraint properly adjusted. Never place anything in front of the head restraint. (24) Complete details, including restrictions, limitations and exclusions, will be available when you become a Cardmember. MasterCard is a registered trademark of MasterCard International Incorporated. This card is issued by First Bankcard, a division of First National Bank of Omaha, pursuant to a license by MasterCard International Incorporated.

©2015 FCA US LLC. All Rights Reserved. Jeep, the Jeep grille, Chrysler, Mopar, Cherokee, Automobility Program, CommandView, Go Anywhere, Do Anything, LaneSense, Latitude, the Mopar Owner Connect design, Mopar Vehicle Protection, ParkSense, ParkView, Pentastar, Selec-Speed, Selec-Terrain, Tigershark, Trailhawk, Trail Rated, Uconnect and Willys are registered trademarks and Jeep Active Drive I, Jeep Active Drive II, Jeep Active Lock, Keyless Enter 'n Go and SafetyTec are trademarks of FCA US LLC.

MultiAir is a registered trademark of C.R.F. Società Consortile per Azioni, used under license by FCA US LLC. Alpine and the Alpine logo are registered trademarks of Alpine Electronics, Inc. All rights reserved. Bluetooth is a registered trademark of Bluetooth SIG, Inc. Facebook is a registered trademark of Facebook, Inc. Instagram is a registered trademark of Instagram, Inc. iPad, iPhone, iPod and iTunes are registered trademarks of Apple Inc. Pinterest is a registered trademark of Pinterest, Inc. Sirius, XM and all related marks and logos are trademarks of SiriusXM Radio Inc. The Twitter name, logo, Twitter T, Tweet and Twitter bird are trademarks of Twitter, Inc. in the United States and other countries. Yelp is a registered trademark of Yelp, Inc. YouTube and Google+ social service are registered trademarks of Google Inc.

This brochure is a publication of FCA US LLC. All product illustrations and specifications are based upon current information at the time of publication approval. FCA US LLC reserves the right to make changes from time to time, without notice or obligation, in prices, specifications, colors, materials and to change or discontinue models, which are considered necessary to the purpose of product improvement or for reasons of design and/or marketing.

73-383-2603 (181M 8/15)

Jeep is a registered trademark of FCA US LLC.