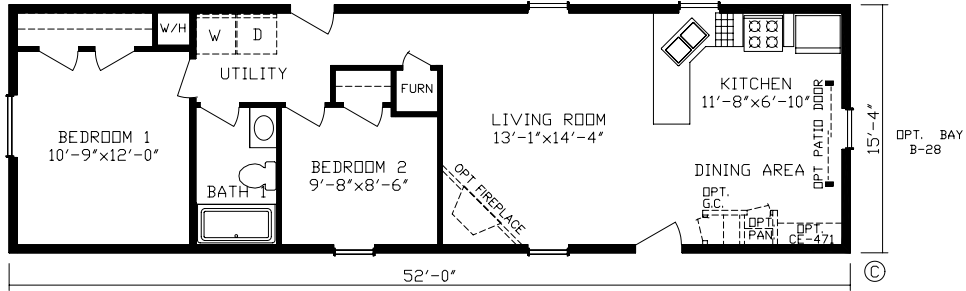


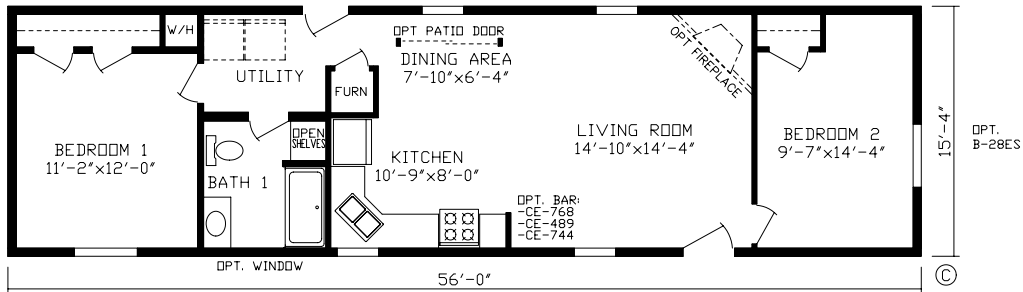


# A-277 SINGLE SECTION HOMES

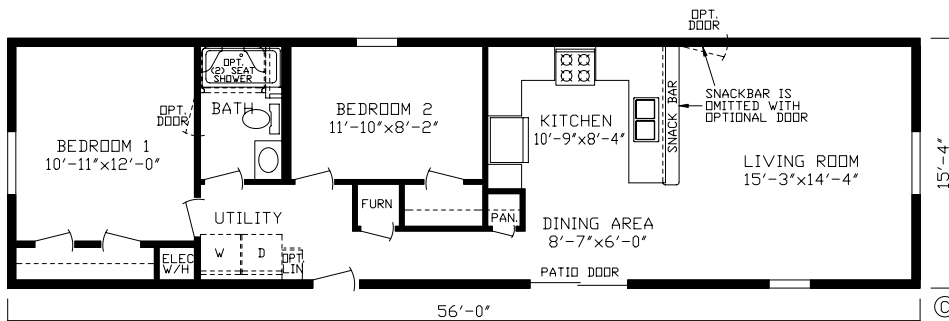
By Century Homes



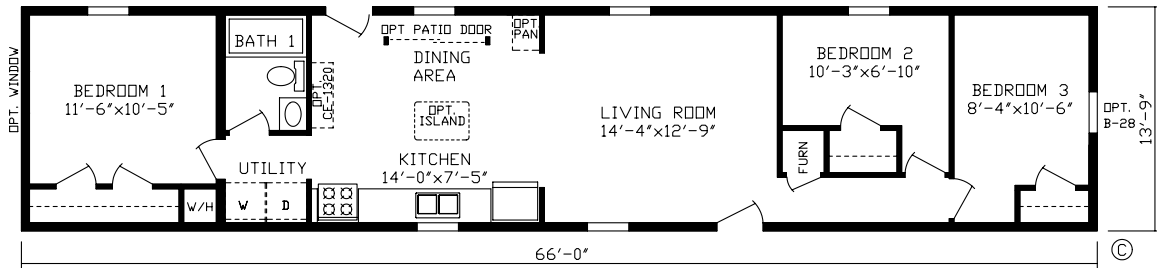
Order No. 147004 797 Sq. Ft.



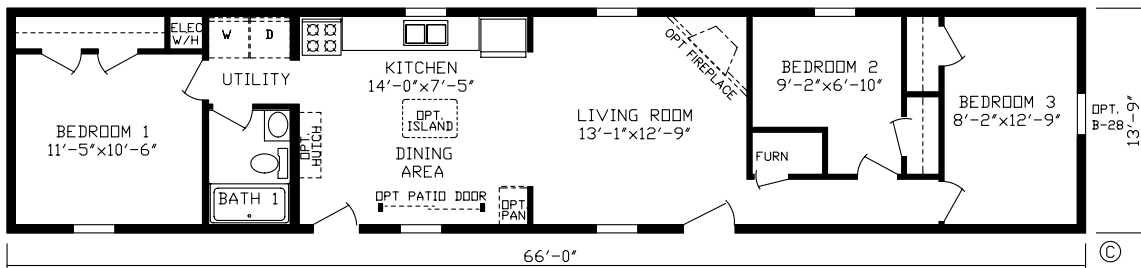
Order No. 147008 858 Sq. Ft.



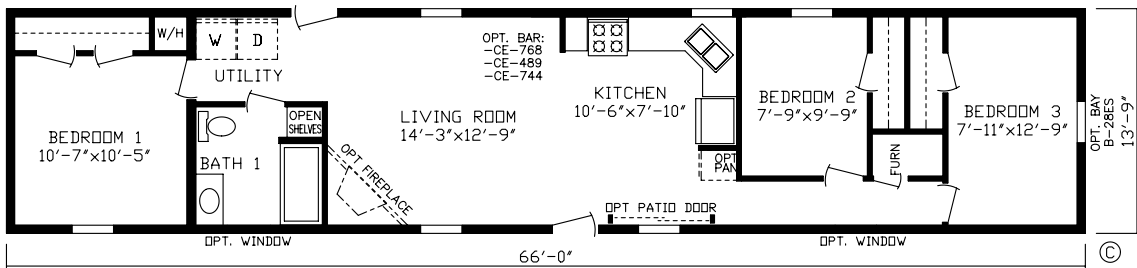
Order No. 1470011 858 Sq. Ft.



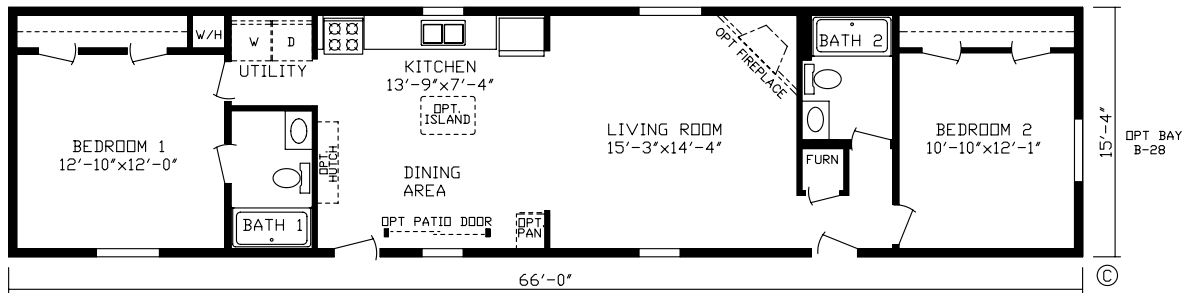
**Order No. 147001 907 Sq. Ft.**



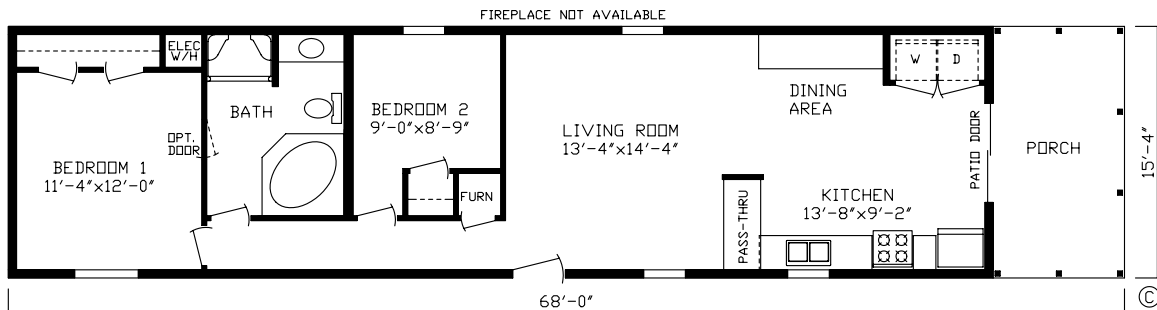
**Order No. 147012 907 Sq. Ft.**



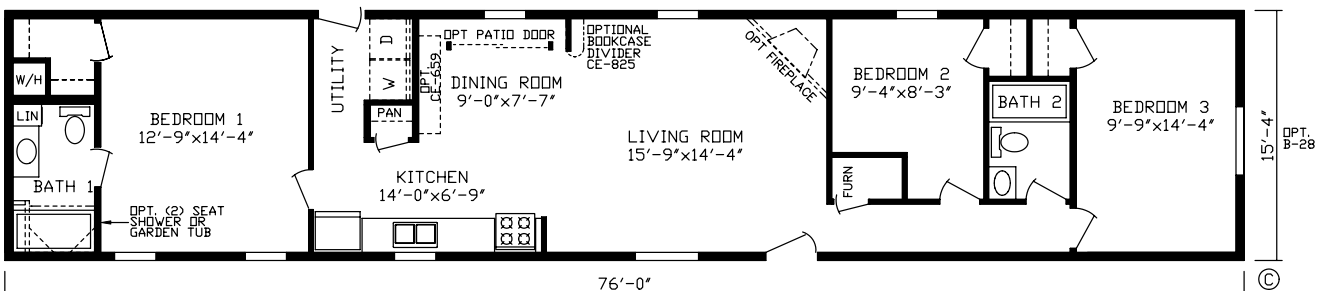
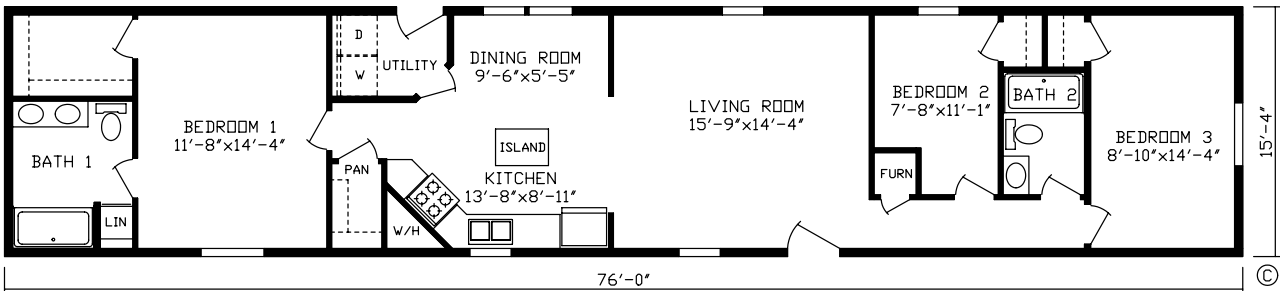
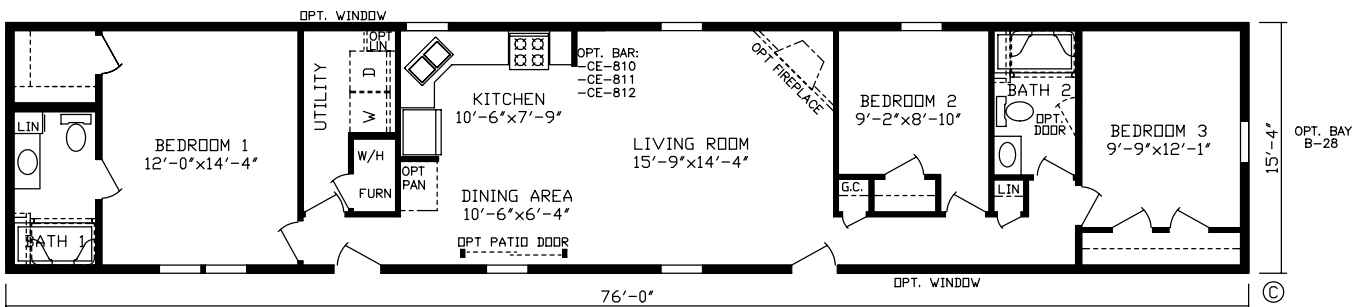
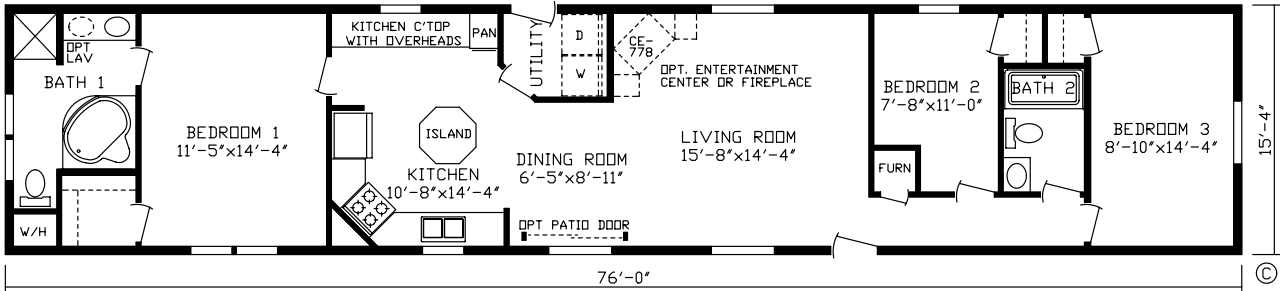
**Order No. 147005 907 Sq. Ft.**



**Order No. 147009 1012 Sq. Ft.**



**Order No. 147007 920 Sq. Ft.**



# A-277 SINGLE SECTION STANDARDS

## Energy Saving Standard Features

Kinro Low E Gridded Thermopane Windows  
Exterior Weather Wrap  
OSB Exterior Sheathing Sidewalls & Endwalls  
R-44 Roof Insulation  
2x6 Sidewalls with R-24 Sidewall Insulation  
R-28 Floor Insulation  
Trane 95% Plus High Efficient Furnace  
Perimeter Heat



## Exterior & Construction

8' Sidewall Height w/Flat Ceilings  
60 lb Ground Snow Load  
2x8 Floor Joist 16 O.C.  
Full Width Floor Decking  
Interior Walls- 16" O.C.  
15" Shutters Doorside & Hitchend  
4 1/2" Dutch Lap Vinyl Siding  
Owens Corning Supreme Shingles  
1/2" OSB Roof Decking  
Lauan Substrate At Exterior Walls

## Floor Coverings

Shaw 18 Ounce Denton Nylon Carpet  
Foyer  
Congoleum Legacy Linoleum  
5 Pound Rebond Carpet Pad  
Tack Strip Carpet Installation



## Electrical

100 Amp 24 Position 24 Mini-Breakers  
(2) Exterior GFI Weather Resistant Receptacle  
Dining Room Chandelier

## Plumbing

Moen Faucets Throughout Entire Home  
40 Gallon Electric W/H w/Double Element  
7 1/2" Stainless Steel Kitchen Sink  
Water Shut Off Valves At Sinks & Commodes  
Easy Access Main Line Water Shut Off Valve  
Frost Free Faucet  
Pex Water Line System  
Plumb For Washer And Dryer



## Bath

Fiberglass Tub/Shower in Bathrooms  
Porcelain Sinks  
Mirror Over Each Bath Lav  
Cosmetic Lights Above Mirror  
Exhaust Fan w/ Light

## Cabinetry

Shaker Milan Mortise & Tennon Cabinet Doors  
Milan Hardwood Cabinet Stiles  
30" Overhead Cabinets  
Adjustable Hidden Hinges  
3 1/2" Crown Molding Above Kitchen Cabinets  
Formica Edging At All Countertops  
High Pressure Laminated Countertops & Backsplash  
Drawer Above Base Cabinets In Kitchen  
Cabinets Over Refrigerator  
Breaker Box Cover  
Dovetail Drawers

## Décor

1/2" Gypsum Wall Panels w/ Vinyl  
Luxe Drapes  
Mini-Blinds  
2 1/4" Door Casing  
2 1/2" Ceiling Cove  
Brushed Nickel Hardware & Cabinet Pulls  
Chair Rail 3 Walls at Living Room  
Stippled Ceiling

## Doors

38x80 White Decorator Front Door  
w/ Storm & Deadbolt  
34x80 White Decorator Rear Door  
w/ Storm & Deadbolt  
Pre-hung Flat Interior Doors  
Furnace Door (To Match Interior Doors)

## Appliances

Whirlpool 18 CF Frost Free Refrigerator  
Whirlpool Deluxe Gas Range  
Whirlpool Dishwasher  
Power Vent Range Hood



©Copyright 2011 Century Homes. Nappanee, Indiana

Note: For model dimensions, our standards and standards of the industry generally include a nominal 4-foot allowance for hitch length plus allowance for other appurtenances for width and for length normally included in measurements for highway movement. Rear bedroom dimensions include bay, unless bay is optional on a particular unit or is omitted by special order. Room sizes are nominal and sometimes the dimension includes wall thickness. Designs, specifications and prices are subject to change without notice. Some optional items are shown. Some tires, wheels, brakes and axles are reused after careful inspection.

7-11 SP-2.5



# CENTURY HOMES

A Member of the Fairmont Family of Housing.

P.O. Box 27, Nappanee, IN 46550

www.homesbycentury.com