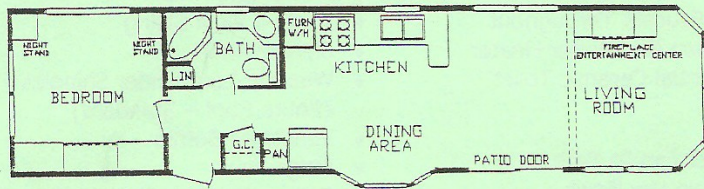


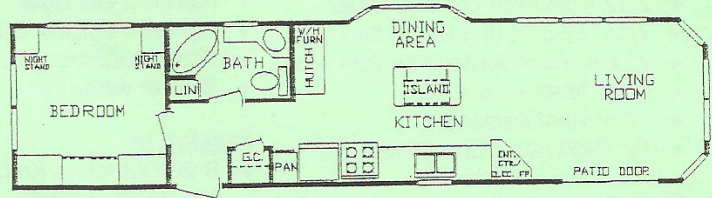
# Fairmont Park Trailers

Division of Fairmont Homes, Inc.

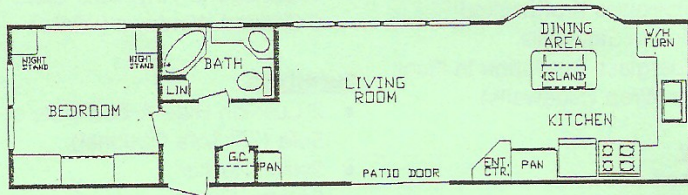
## Canadian Export Models



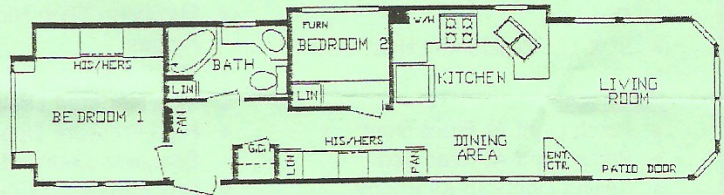
MODEL # 148000 (12' x 44')



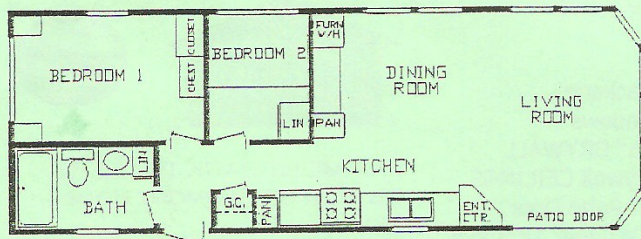
MODEL # 148001 (12' x 44')



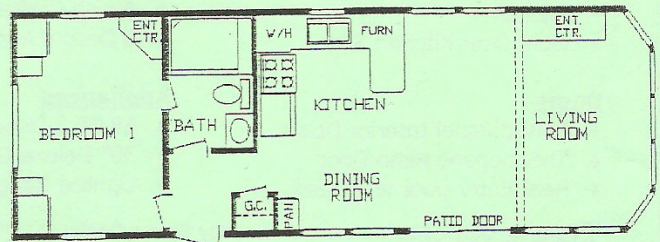
MODEL # 148002 (12' x 44')



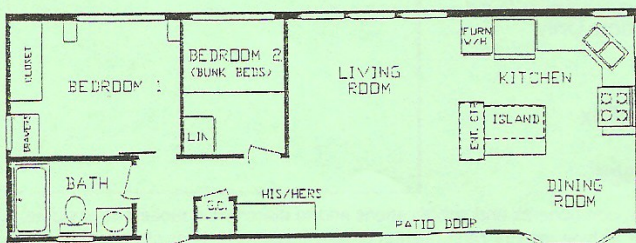
MODEL # 148004 (12' x 44')



MODEL # 148005 (14' x 39')



MODEL # 148006 (14' x 39')



MODEL # 148014 (14' x 39')

# FAIRMONT PARK TRAILERS

A division of Fairmont Homes, Inc.

## STANDARD FEATURES

### General

- ◆ 90" Sidewalls (1/2" Drywall)
- ◆ 2" X 4" Sidewalls 16" O.C.
- ◆ 2" x 6" Floor Joists (16" O.C. – Transverse)
- ◆ 3/4" Floor Decking (8' x 12')
- ◆ 30 PSF Rafters – 16" O.C.
- ◆ 6:12 Roof Pitch Main Area
- ◆ 2:12 Roof Pitch Loft & Dormer
- ◆ 7/16" OSB Plating Under Siding
- ◆ 2" X 4" Floor Joists in Sunken Area
- ◆ Floor Joists – 16" O.C.
- ◆ 7/16" Roof Decking
- ◆ 1/2" DRYWALL Throughout

### Carpet

- ◆ Berber Carpet in living areas w/ pad & tack strip
- ◆ 1/2" Rebond Pad
- ◆ Linoleum - Bath, Kit, DR

### Furnace & Air Conditioning

- ◆ 41,000 BTU Undercounter Gas Furnace
- ◆ 5" X 12" Residential Heat Ducts

### Electrical

- ◆ Porch Light At Front Door
- ◆ Porch Light At Rear Door
- ◆ Ceiling Lights In All Rooms
- ◆ GFI Breakers Per Code
- ◆ 50 Amp Service
- ◆ Deluxe Lighting Package
- ◆ Safe House Package – Smoke Detector, LP Detector, Fire Extinguisher & GFI Receipts
- ◆ One Outside Recept – Doorside
- ◆ Overhead Track Lighting in Kitchen
- ◆ Light Over Kitchen Sink

### Doors

- ◆ Raised Panel Interior Doors
- ◆ Thermopane Patio Door
- ◆ Rear Entry Door w/Screen

### Popular Options:

- Trapezoid Windows
- Arch Windows
- A/C Prep
- Wall-mount Loft A/C
- Stainless Steel Appliances
- Sand Windows IPO White

- Energy Saver Package (2"x6" Sidewalls, R-20 Insulation) \* 14' Wide Models Only
- Central Vacuum System
- 16 Gal Effective WH
- Suspension Bed w/Lift-up Bed Box
- Metal Roof
- Country Manor Upgrade Package

### Plumbing

- ◆ White Kitchen Sink
- ◆ Moen Faucets Throughout
- ◆ 10 Gallon Gas Water Heater
- ◆ Residential Ceramic Toilet

### Bath

- ◆ Exhaust Fan In Bath
- ◆ Porcelain Lav Bowl
- ◆ Lighted Medicine Cabinet
- ◆ One Piece Fiberglass Tub
- ◆ Shower w/Curtain

### Insulation

- ◆ R-20 Fiberglass Kraftback Insulation in Roof
- ◆ R-14 Fiberglass Kraftbacked Insulation in Sidewalls
- ◆ R-20 Fiberglass Insulation in Floor
- ◆ Weather Wrap (Sidewalls)

### Cabinetry

- ◆ Hardwood Cabinets
- ◆ European Style Hidden Cabinet Hinges
- ◆ Flat Panel Oak Doors
- ◆ Side Mounted Drawer Guides
- ◆ High Pressure Dual Laminated Seamless Countertops
- ◆ Oak Edging on Countertops
- ◆ Tip Out Trays Under Sink

### Décor

- ◆ Deluxe Drapery Package
- ◆ Blinds on All Windows
- ◆ Vinyl Covered 1/2" DRYWALL
- ◆ 1/2" Textured Drywall CEILINGS
- ◆ Vertical Blind for Patio Door
- ◆ Amish Crafted Designer Trim Pkg.
- ◆ 6 Decors Available

### Appliances

- ◆ 18 CF 2-Door FF Refrigerator
- ◆ 30" Deluxe Gas Range (LP)
- ◆ Lighted Range Vent

### Exterior

- ◆ Removable Hitch
- ◆ Triple 3 Vinyl Siding
- ◆ Shingle Roof
- ◆ Weather-Lock Under Shingles (Entire Roof – Standard)
- ◆ Ventilated Soffits
- ◆ Ridge Vent
- ◆ Residential Step Flashing at Loft and Dormers Transitions
- ◆ Innovent Vent Chutes in Roof
- ◆ Breathable Mesh Underbelly

### Windows

- ◆ Egress Windows In All Bedrooms
- ◆ Thermopane Vinyl Dual Glaze Low E Gridded Windows (White)

### Furniture

- ◆ 2-Cushion Hide-A-Bed Sleeper Sofa (2<sup>nd</sup> Sofa Optional)
- ◆ Swivel Rocker
- ◆ Dinette Table (Drop Leaf – Square Base)
- ◆ 4 Dinette Chairs (w/Seat Storage)
- ◆ Queen Bed w/Metal Bed Frame



FAIRMONT PARK TRAILERS  
DIVISION OF FAIRMONT HOMES,  
INC.  
502 S. OAKLAND AVE.  
NAPPANEE, IN 46528  
PH. 800-777-8787, EXT. 3735 & 3734  
FX. 800-865-2294  
WWW.FAIRMONTPARKTRAILERS.COM

AUTHORIZED DEALER:

Note: Fairmont reserves the right to make changes in price, colors, materials, components and specifications and to discontinue models at any time; without notice or obligation. Fairmont assumes no responsibility for any error in type or print reproduction of specifications or floor plans in this brochure. ©Copyright 2009 Fairmont Homes, Inc., Nappanee, Indiana 11/2011 CSA