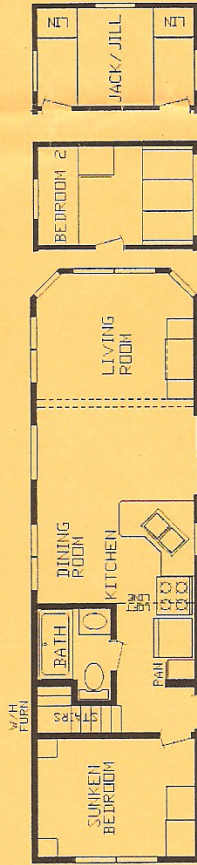
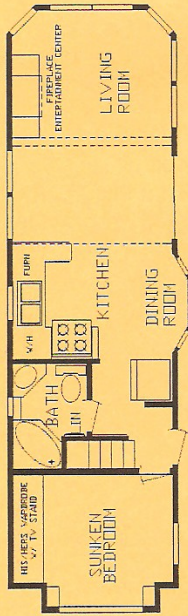


Fairmont Park Trailers

Division of Fairmont Homes, Inc.

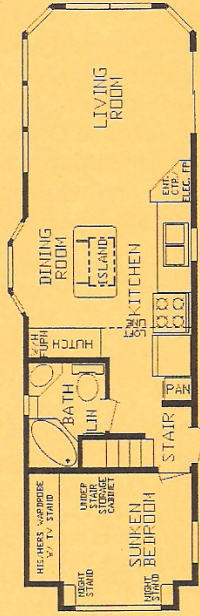


MODEL # 100110

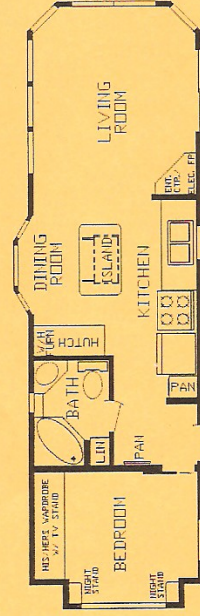


MODEL # 100111

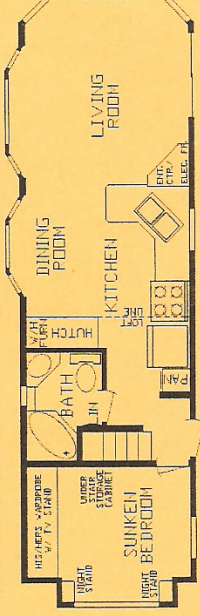
MODEL # 100117



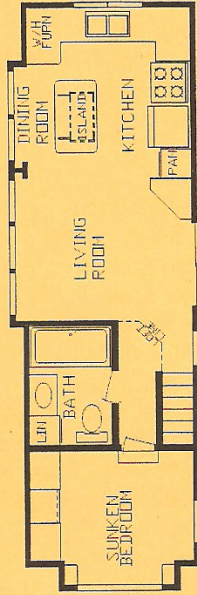
MODEL # 100120



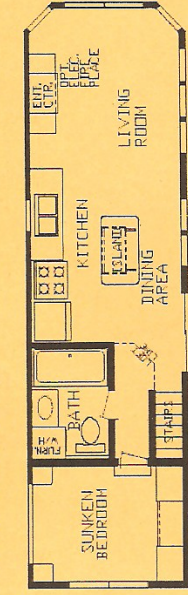
MODEL # 100122



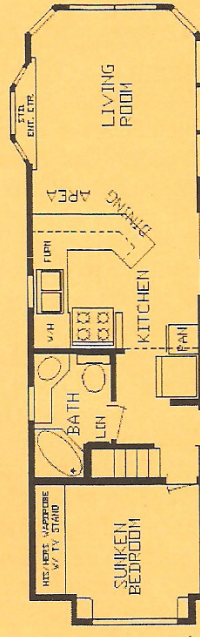
MODEL # 100124



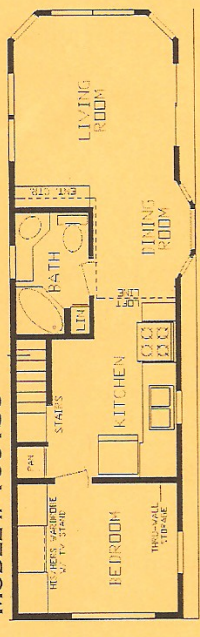
MODEL # 100126



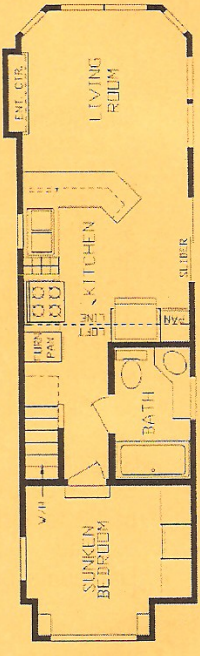
MODEL # 100131



MODEL # 100136



MODEL # 100144



MODEL # 100148

FAIRMONT PARK TRAILERS

A Division of Fairmont Homes, Inc.

FAIRMONT PARK STANDARD FEATURES

General

- ◆ 90" Sidewalls (1/2" Drywall)
- ◆ 2" X 4" Sidewalls 16" O.C.
- ◆ 2" x 6" Floor Joists (16" O.C. – Transverse)
- ◆ 3/4" Floor Decking (8' x 12')
- ◆ 30 PSF Rafters – 16" O.C.
- ◆ 6:12 exterior Roof Pitch Main Area
- ◆ 2:12 Roof Pitch Loft & Dormers
- ◆ 7/16" OSB Plating Under Siding
- ◆ Floor Joists – 16" O.C.
- ◆ 1/2" DRYWALL Throughout

Carpet

- ◆ Berber Carpet in living areas w/ pad & tack strip
- ◆ 1/2" Pad
- ◆ Linoleum - Bath, Kit, DR

Furnace & Air Conditioning

- ◆ 41,000 BTU Undercounter Gas Furnace
- ◆ 5" X 12" Residential Heat Ducts

Electrical

- ◆ Porch Light At Front Door
- ◆ Porch Light At Rear Door
- ◆ Ceiling Lights In All Rooms
- ◆ GFI Breakers Per Code
- ◆ 50 Amp Service
- ◆ Deluxe Lighting Package
- ◆ Safe House Package – Smoke Detector, LP Detector, Fire Extinguisher & GFI Recept
- ◆ One Outside Recept – Doorside
- ◆ Overhead Track Lighting in Kitchen
- ◆ Light Over Kitchen Sink

Doors

- ◆ Raised Panel Interior Doors
- ◆ Vinyl Thermopane Patio Door
- ◆ Rear Entry Door w/Screen

Plumbing

- ◆ White Kitchen Sink
- ◆ Moen Faucets Throughout
- ◆ 10 Gallon Gas Water Heater
- ◆ Residential Ceramic Toilet

Bath

- ◆ Exhaust Fan In Bath
- ◆ Porcelain Lav Bowl
- ◆ Lighted Medicine Cabinet
- ◆ One Piece Fiberglass Tub
- ◆ Shower w/Curtain

Insulation

- ◆ R-19 Fiberglass Kraftback Insulation in Roof
- ◆ R-13 Fiberglass Kraftbacked Insulation in Sidewalls
- ◆ R-22 Fiberglass Insulation in Floor
- ◆ Weather Wrap (Sidewalls)

Cabinetry

- ◆ Hardwood Cabinets
- ◆ European Style Hidden Cabinet Hinges
- ◆ Flat Panel Oak Doors
- ◆ Side Mounted Drawer Guides
- ◆ High Pressure Dual Laminated Seamless Countertops
- ◆ Oak Edging on Countertops
- ◆ Tip Out Trays Under Sink

Décor

- ◆ Deluxe Drape Package
- ◆ Mini-Blinds on All Windows
- ◆ Vinyl Covered 1/2" DRYWALL
- ◆ 1/2" Textured Drywall CEILINGS
- ◆ Vertical Blind for Patio Door
- ◆ Amish Crafted Designer Trim Pkg
- ◆ 6 Decors Available

Appliances

- ◆ 18 CF 2-Door FF Refrigerator
- ◆ 30" jDlx Gas Range
- ◆ Lighted Range Vent

Exterior

- ◆ Removable Hitch
- ◆ Triple 3 Vinyl Siding
- ◆ Shingled Roof
- ◆ Weather-Lock Under Shingles (Entire Roof – Standard)
- ◆ Ventilated Soffits
- ◆ Ridge Vent
- ◆ Residential Step Flashing at Loft and Dormers Transitions
- ◆ Innovent Vent Chutes in Roof
- ◆ Breathable Mesh Underbelly

Windows

- ◆ Egress Windows In All Bedrooms
- ◆ Thermopane Vinyl Dual Glaze Low E Gridded Windows (White)

Furniture

- ◆ 2 Cushion Hide-A-Bed Sleeper Sofa (2nd Sofa Optional)
- ◆ Swivel Rocker
- ◆ Dinette Table (Drop Leaf – Square Base)
- ◆ 4 Dinette Chairs W/Seat Storage
- ◆ Queen Bed W/Metal Bed Frame



FAIRMONT PARK TRAILERS
DIVISION OF FAIRMONT HOMES,
INC.

502 S. OAKLAND AVE.
NAPPANEE, IN 46528
PH. 800-777-8787, EXT. 3735 & 3734
FX. 800-865-2294
WWW.FAIRMONTPARKTRAILERS.COM

AUTHORIZED DEALER:

POPULAR OPTIONS:

TRAPEZOID WINDOWS
ARCH WINDOWS
A/C PREP
WALL-MOUNT LOFT A/C
STAINLESS STEEL APPLIANCES
SAND WINDOWS P/O WHITE

20" LCD FLAT SCREEN TV
CENTRAL VACUUM SYSTEM
16 GALLON EFFECTIVE W/H
SUSPENSION BED W/LIFT UP BED BOX
METAL ROOF
COUNTRY MANOR UPGRADE PACKAGE

Note: Fairmont reserves the right to make changes in price, colors, materials, components and specifications and to discontinue models at any time; without notice or obligation. Fairmont assumes no responsibility for any error in type or print reproduction of specifications or floor plans in this brochure. ©Copyright 2009 Fairmont Homes, Inc., Nappanee, Indiana 11/2011 USA