



PreferredPlus Protection



SUBARU

Classic Subaru of Atlanta

Tire & Wheel



Cosmetic Wheel Coverage



Paintless Dent Repair



Windshield Repair



Interior Repair



Key Replacement

True Coverage Means Better Coverage



Construction Zones



Metal Plates



Cosmetic Damage
to Wheel Replacement



Cosmetic Damage to
Chrome/Chrome Clad



Cosmetic Damage
to Hubcaps



Aftermarket Wheels
with no Surcharges



Curb Damage



Oversize Tires
and Wheels



Tire Pressure
Monitoring Sensors



Snow Tires



Hail Damage

Coverage excludes Carbon Fiber Wheels.

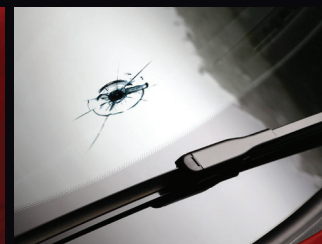
This is a summary of possible benefits available. Certain restrictions and limitations may apply. Please refer to the actual contract for specific details and limitations.



PreferredPlus Protection

Protect Your Vehicle Investment

PreferredPlus Protection	PreferredPlus Ultimate	PreferredPlus Superior	PreferredPlus Tire & Wheel
Tire & Wheel with Curb	✓	✓	✓
Cosmetic Wheel Coverage	✓	✓	✓
Paintless Dent Repair	✓	✓	
Windshield Repair	✓	✓	
Interior Repair	✓	✓	
Key Replacement	✓		



Tire & Wheel

Road hazard coverage with no deductible or hidden fees, to include mounting, balancing, and valve stems; wheels, sales tax, and labor charges.

- Covers damage from blowouts, nails, glass, potholes, and debris
- Covers aftermarket wheels

Also Covers:
Curb Damage
and Tire Pressure
Monitoring
Sensors

Cosmetic Wheel Coverage

A repair process that restores the appearance of your wheels.

- Repairs scrapes, scratches, and nicks caused by curb damage
- If not repairable, the wheel will be replaced

Wheel Covers
(Hubcaps), Alloy,
Chrome, and
Chrome Clad
Wheels are
Covered

Paintless Dent Repair

Minor dents and door dings are removed by trained technicians.

- No limit to the number of times the Paintless Dent Repair process can be applied
- No sanding, painting, or body fillers are used
- Hail damage deductible is covered up to \$1000 when using Paintless Dent Repair

Windshield Repair

A permanent process in which cracks and breaks may be repaired with a powerful resin.

- A trained technician will repair your damaged windshield, so you avoid the cost of replacement
- Repairs minor stars, cracks and chips
- Can save on having to pay a costly windshield deductible

Interior Repair

Professional cleanup, reconditioning, or repairs to interior surfaces.

- Covers interior damage to vinyl, leather, carpet, fabric, and upholstery
- No maximum number of cleanings and repairs during the term of the contract

Key Replacement

If keys are lost or damaged, keys are replaced and programming charges are covered.

- Today's technology has made keys and keyless fobs costly to replace

Coverage offers 24-hour emergency roadside assistance including towing, lockout assistance, and tire.

- Nationwide 24/7/365 service

True Coverage Means Better Coverage

True Coverage is a program that includes coverage for problems that are usually excluded, such as damage caused by construction zones, car washes, or metal plates on the road. It also covers snow tires, wheel covers (hubcaps), chrome and chrome clad wheels, aftermarket wheels, and more.

Coverage excludes Carbon Fiber Wheels.

This is a summary of possible benefits available. Certain restrictions and limitations may apply. Please refer to the actual contract for specific details and limitations.