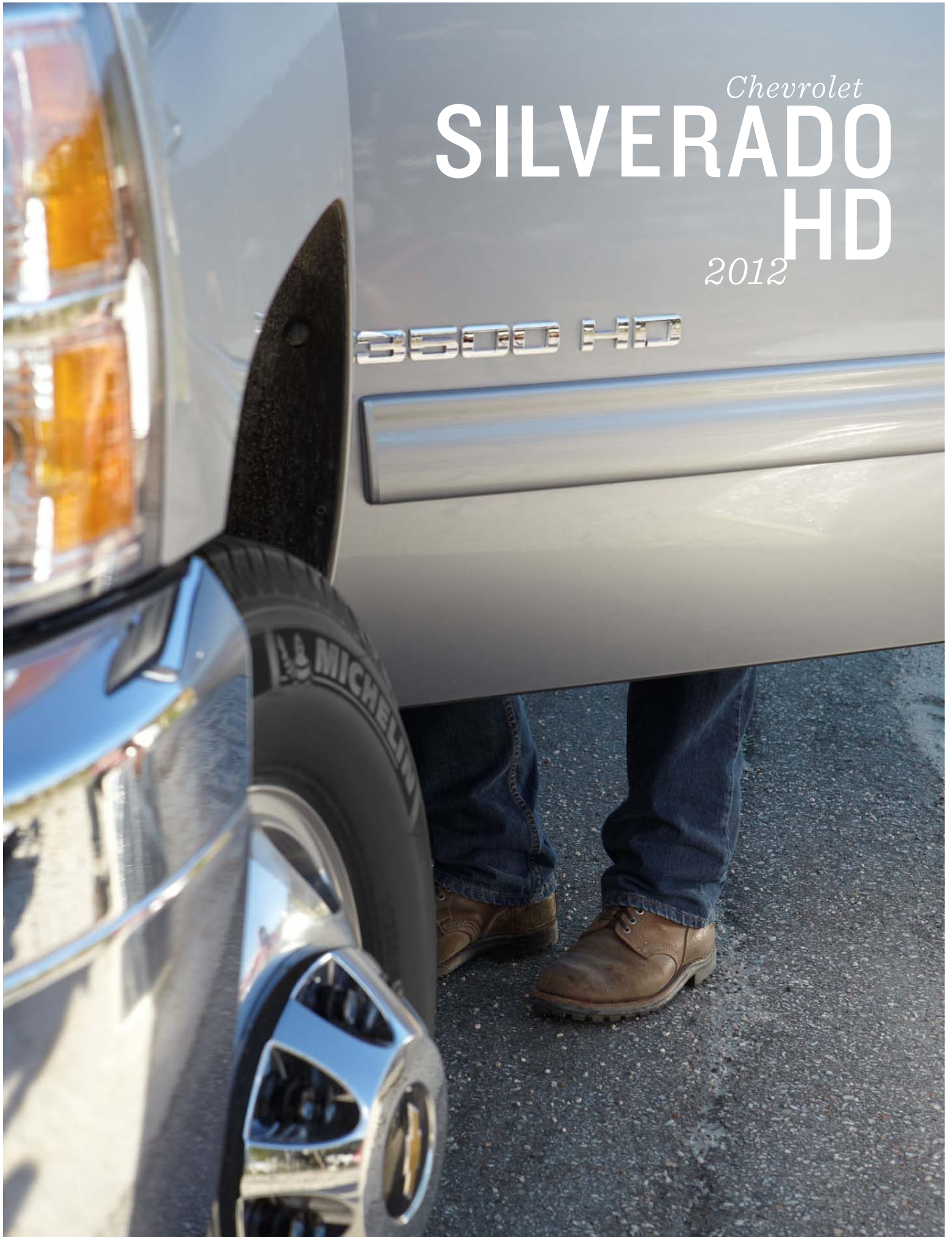
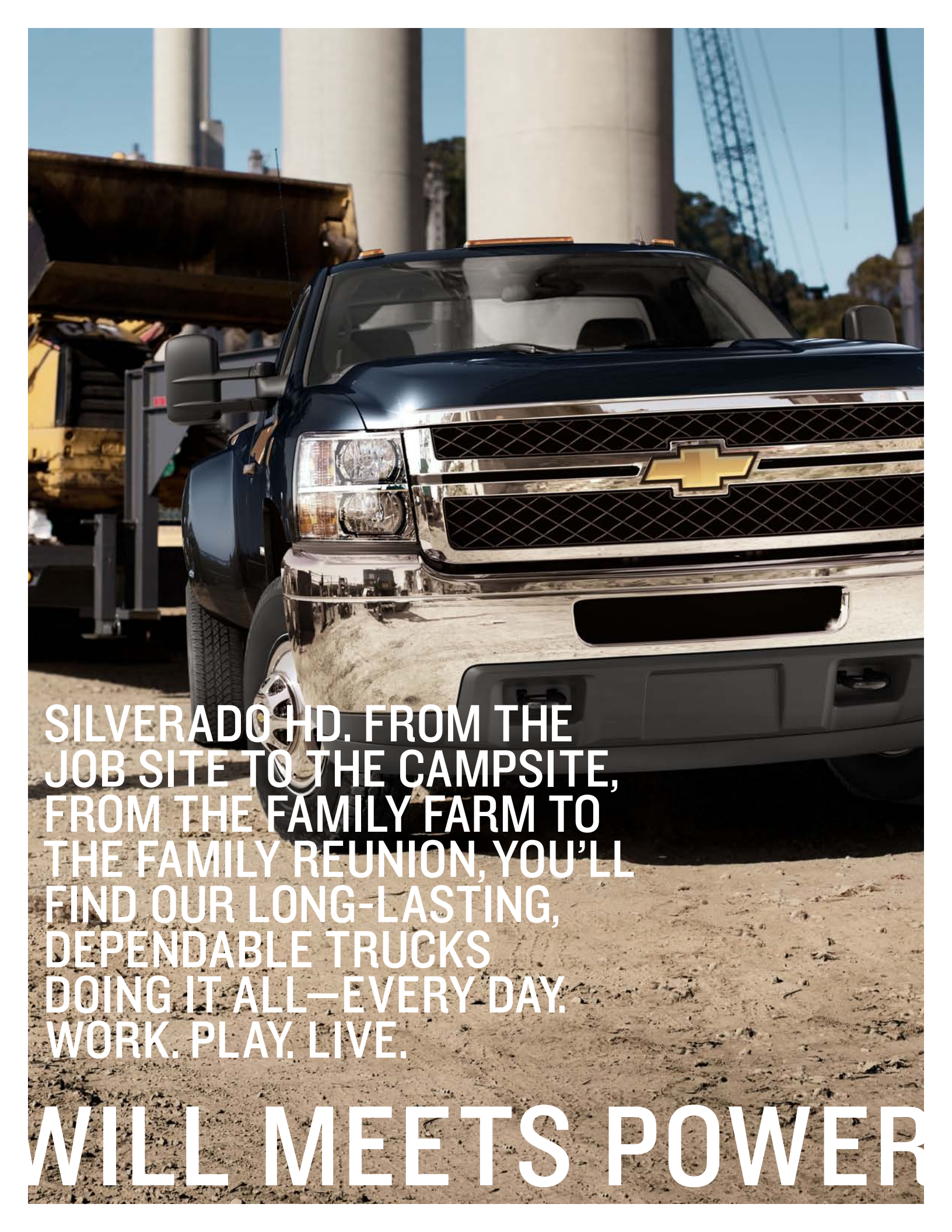


Chevrolet
SILVERADO
HD
2012

3500 HD





SILVERADO HD. FROM THE
JOB SITE TO THE CAMPSITE,
FROM THE FAMILY FARM TO
THE FAMILY REUNION, YOU'LL
FIND OUR LONG-LASTING,
DEPENDABLE TRUCKS
DOING IT ALL—EVERY DAY.
WORK. PLAY. LIVE.

WILL MEETS POWER



Silverado 3500HD Dually
Crew Cab Long Box LTZ 4x4
shown in Black Granite Metallic
with available features.

AT A GLANCE

Choice of 2WD or 4x4 models
Available Duramax 6.6L Turbo-Diesel V8 engine
and Allison 6-speed automatic transmission
Tows up to 23,000 lbs.¹
Fully boxed heavy-duty frame


JOB READY

Brute strength solves a lot of problems. Reason enough to build the 2012 Silverado HD—**OUR MOST POWERFUL HEAVY DUTY** yet. By teaming an available **DURAMAX® 6.6L TURBO-DIESEL V8** powerhouse with the legendary Allison® 6-speed transmission, Silverado HD delivers **397 HORSEPOWER, 765 LB.-FT. OF TORQUE** and a **MAXIMUM TOWING CAPACITY OF UP TO 23,000 LBS.¹** Factor in a high-strength, fully boxed steel frame that's capable of hauling up to 7,215 lbs.² of payload and the phrase "**THE STRONGEST SILVERADO HD EVER**" takes on a much deeper meaning.

Want to configure your rig? Silverado HD gives you the choices you need to carry both cargo and crew. Choose from Regular Cab, Extended Cab or Crew Cab, all available in 2WD or 4x4 models to help you get the right people to the job.

The 2012 Silverado HD. This dependable, long-lasting workhorse of a truck comes with the best coverage of any full-size pickup—a **100,000-MILE/5-YEAR POWERTRAIN WARRANTY.³** Because we know it's one thing to talk quality and quite another to back it up.

¹ Requires fifth-wheel trailer hitch and Regular Cab model. Maximum trailer weight ratings are calculated assuming a base vehicle, except for any option(s) necessary to achieve the rating, plus driver. The weight of other optional equipment, passengers and cargo will reduce the maximum trailer weight your vehicle can tow. See your Chevy dealer for additional details. ² Requires Regular Cab model and gas engine. Maximum payload capacity includes weight of driver, passengers, optional equipment and cargo. ³ Whichever comes first. See dealer for limited warranty details.



Silverado 2500HD
Extended Cab Standard Box LT 4x4
shown in Blue Granite Metallic
with available features and snow plow
from an independent supplier.¹

AT A GLANCE

The most torque in Silverado HD history
Independent front suspension with up to 6,000-lb. FGAWR²
Available automatic locking rear differential
Asymmetric rear leaf springs to reduce wheel hop
Available Snow Plow Prep Package

¹ Equipment from independent suppliers is not covered by the GM New Vehicle Limited Warranty. GM is not responsible for the safety or quality of independent supplier alterations. ² Requires available Snow Plow Prep Package.

765 LB.-FT. OF PERSUASION

Torque is the force that gets you—and whatever you need to move—rolling from a dead stop. It's the power to get heavy things from one place to another. No wonder Silverado HD can be equipped to generate a massive **765 LB.-FT. OF TORQUE**. This is how you bring trailers to heel or blast snow from an unplowed road. Plain and simple, this is how you get work done.

Yet all the power in the world means nothing until you bring it to the road. That's why you'll find an available **ALLISON 6-SPEED** automatic planted next to an available Duramax 6.6L Turbo-Diesel V8. This Allison transmission comes from a long line of industrial-strength gearboxes—making it right at home in a Silverado HD.

And that part about blasting snow? All 4x4 Silverado HD models can be factory-equipped to handle a snow plow. Just order the available Snow Plow Prep Package and plow on.





FLINT ASSEMBLY PLANT, FLINT, MI

SILVERADO HD—BUILT WITH COMPONENTS THAT ARE BIGGER AND STRONGER THAN WE'VE EVER OFFERED BEFORE.

Muscle needs backbone. So you can be sure our engineers went for all they could get. And what Silverado HD got was a frame that's **FIVE TIMES TORSIONALLY STRONGER** than the previous generation. In fact, this **FULLY BOXED, HIGH-STRENGTH STEEL FRAME** helped Silverado HD earn a best-in-class **MAXIMUM PAYLOAD RATING OF 7,215 LBS!** You won't find a fully boxed frame on a Ford F-250 or F-350. But strength also comes from flexibility, and Silverado HD has a suspension that is specifically tuned to handle heavy loads and rough roads, while at the same time delivering a surprisingly smooth ride. We've maintained the torsion-bar front suspension from the previous generation but increased the **FRONT GROSS AXLE WEIGHT RATINGS UP TO 6,000 LBS.²** More load. Less effort. Better day.

¹ Requires Regular Cab model and gas engine. Maximum payload capacity includes weight of driver, passengers, optional equipment and cargo.
² Requires available Snow Plow Prep Package.



THREE-INCH-WIDE REAR LEAF SPRINGS



FULLY BOXED, HIGH-STRENGTH STEEL FRAME

SILVERADO 3500HD



FORD F-350

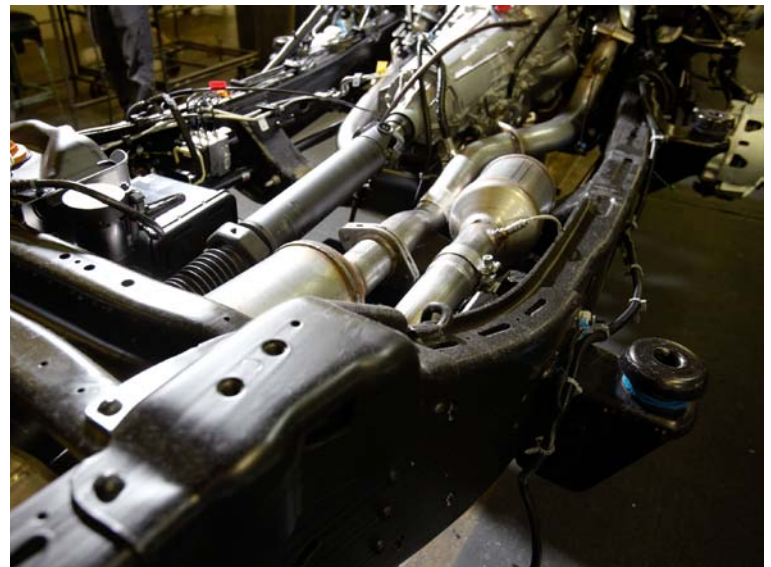


IN A REAL-WORLD MATCHUP—THE SILVERADO HD FRAME PROVED TORSIONALLY STIFFER THAN FORD SUPER DUTY—SILVERADO WINS.

A spec chart tells a lot. Real-world tests tell more. That's why Chevy hired AMCI Testing, a respected independent automotive testing firm, to evaluate Silverado HD and Ford Super Duty in head-to-head tests replicating real-world situations.¹ AMCI Testing repeated each comparison at least 24 times before certifying the results. The frame stiffness comparison was only one telling example—the Silverado fully boxed frame held firm while Super Duty got twisted

¹ 2011 models tested.

out of shape. Tests measured frame twist/torsional rigidity, indicated by tailgate operation and bed/cab misalignment; acceleration from 0 to 60 and 30-to-55 mph with a payload and/or uphill with a trailer, at altitude; suspension sag under load; 70-to-0 brake fade under stress; and exhaust brake performance. Nine comprehensive tests. **NINE DECISIVE CHEVY VICTORIES.** That's the reality.





Silverado 3500HD Dually Crew Cab Long Box LTZ 4x4 shown in Silver Ice Metallic with available features.

TRAILERS ARE MEANT TO FOLLOW. SILVERADO IS MEANT TO LEAD.

You don't saw logs with a steak knife. You don't cut hay with a garden tractor. And you don't haul vintage muscle cars with just any truck. Silverado HD is at its best towing gooseneck and fifth-wheel trailers of varying sizes up to a best-in-class 23,000 lbs.¹

The **DIESEL EXHAUST BRAKE SYSTEM** helps keep heavy loads in check by evaluating the load and grade, and if needed, uses a variable vane geometry turbo to create the necessary back pressure to slow your rig and help reduce brake use. Together with the available Duramax Turbo-Diesel engine and Allison transmission, diesel exhaust braking is simply a way for engine exhaust to help slow the heavy load you're towing downhill.

The available **INTEGRATED TRAILER BRAKE CONTROLLER**, mounted on your dash, provides measured brake force to the electric-controlled trailer brakes for added confidence while towing heavy loads. **AUTO GRADE BRAKING** works with cruise control to maintain vehicle speed on long, steep descents.

While these trailering features help stop your heavily loaded truck, Silverado HD gets your rig rolling smoothly—even on hills.

If your tires begin to slide in a direction that's different from the one you're steering, **STABILITRAK® ELECTRONIC STABILITY CONTROL SYSTEM**, standard on single rear wheel models, makes small, individual brake applications and engine torque adjustments to enhance control and help keep you on the path being steered. **TRAILER SWAY CONTROL** (single rear wheel models only) senses when a trailer starts to sway and automatically applies the truck's brakes, and reduces engine power, if necessary, to help get you back on track. **TOW/HAUL** mode, another confidence builder, keeps you in the right gear for the grade you're on. And if you're stopped on inclines greater than 5%, **HILL START ASSIST** (single rear wheel models only) will automatically engage, holding the truck stationary for about a second, allowing you to accelerate before the truck can roll backward.

¹ Requires fifth-wheel trailer hitch and Regular Cab model. Maximum trailer weight ratings are calculated assuming a base vehicle, except for any option(s) necessary to achieve the rating, plus driver. The weight of other optional equipment, passengers and cargo will reduce the maximum trailer weight your vehicle can tow. See your Chevy dealer for additional details.

2500HD AND 3500HD BALL-HITCH TRAILERING¹ (LBS.)

Please read the Trailering Basics on the facing page before towing a trailer with any Chevy truck.

REGULAR CAB MAXIMUM TRAILER WEIGHT

Engine	Axle Ratio	GCWR ²	2500HD Long Box 2WD	3500HD Long Box 2WD	3500HD Big Dually Long Box 2WD	2500HD Long Box 4x4	3500HD Long Box 4x4	3500HD Big Dually Long Box 4x4
Vortec 6.0L V8/ 6-speed automatic	4.10	20,500	13,000	13,000	14,100	13,000	13,000	13,800
	3.73	16,000	10,200	—	9,600	9,900	9,700	9,300
Duramax 6.6L Turbo-Diesel V8/Allison 1000 6-speed auto	3.73	24,500	13,000	—	—	13,000	13,000	—
		30,500	—	—	—	—	—	16,000

EXTENDED CAB MAXIMUM TRAILER WEIGHT

Engine	Axle Ratio	GCWR ²	2500HD Standard Box 2WD	2500HD Long Box 2WD	3500HD Long Box 2WD	3500HD Big Dually Long Box 2WD	2500HD Standard Box 4x4	2500HD Long Box 4x4	3500HD Long Box 4x4	3500HD Big Dually Long Box 4x4
Vortec 6.0L V8/ 6-speed automatic	4.10	20,500	13,000	13,000	13,000	13,600	13,000	13,000	13,000	13,400
	3.73	16,000	9,800	9,700	9,500	9,100	9,500	9,400	9,200	8,900
Duramax 6.6L Turbo-Diesel V8/Allison 1000 6-speed auto	3.73	24,500	13,000	13,000	13,000	—	13,000	13,000	13,000	—
		30,500	—	—	—	16,500	—	—	—	18,000 ³

CREW CAB MAXIMUM TRAILER WEIGHT

Engine	Axle Ratio	GCWR ²	2500HD Standard Box 2WD	2500HD Long Box 2WD	3500HD Standard Box 2WD	3500HD Long Box 2WD	3500HD Big Dually Long Box 2WD	2500HD Standard Box 4x4	2500HD Long Box 4x4	3500HD Standard Box 4x4	3500HD Long Box 4x4	3500HD Big Dually Long Box 4x4
Vortec 6.0L V8/ 6-speed automatic	4.10	20,500	13,000	13,000	13,000	13,000	13,500	13,000	13,000	13,000	13,000	13,200
	3.73	16,000	9,700	9,600	9,500	9,400	9,000	9,400	9,300	9,200	9,100	8,700
Duramax 6.6L Turbo-Diesel V8/Allison 1000 6-speed auto	3.73	24,500	13,000	13,000	13,000	13,000	—	13,000	13,000	13,000	13,000	—
		30,500	—	—	—	—	16,500	—	—	—	—	18,000 ³

2500HD AND 3500HD FIFTH-WHEEL TRAILERING¹ (LBS.)

REGULAR CAB MAXIMUM TRAILER WEIGHT

Engine	Axle Ratio	GCWR ²	2500HD Long Box 2WD	3500HD Long Box 2WD	3500HD Big Dually Long Box 2WD	2500HD Long Box 4x4	3500HD Long Box 4x4	3500HD Big Dually Long Box 4x4
Vortec 6.0L V8/ 6-speed automatic	4.10	20,500	14,700	14,500	14,100	14,400	14,200	13,800
	3.73	16,000	10,200	—	9,600	9,900	9,700	9,300
Duramax 6.6L Turbo-Diesel V8/Allison 1000 6-speed auto	3.73	24,500	17,800	—	—	17,500	17,400	—
		30,500	—	—	—	—	—	23,000

EXTENDED CAB MAXIMUM TRAILER WEIGHT

Engine	Axle Ratio	GCWR ²	2500HD Standard Box 2WD	2500HD Long Box 2WD	3500HD Long Box 2WD	3500HD Big Dually Long Box 2WD	2500HD Standard Box 4x4	2500HD Long Box 4x4	3500HD Long Box 4x4	3500HD Big Dually Long Box 4x4
Vortec 6.0L V8/ 6-speed automatic	4.10	20,500	14,300	14,200	14,000	13,600	14,000	13,900	13,700	13,400
	3.73	16,000	9,800	9,700	9,500	9,100	9,500	9,400	9,200	8,900
Duramax 6.6L Turbo-Diesel V8/Allison 1000 6-speed auto	3.73	24,500	17,500	17,400	17,300	—	16,400	15,700	16,900	—
		30,500	—	—	—	22,800	—	—	—	22,600

CREW CAB MAXIMUM TRAILER WEIGHT

Engine	Axle Ratio	GCWR ²	2500HD Standard Box 2WD	2500HD Long Box 2WD	3500HD Standard Box 2WD	3500HD Long Box 2WD	3500HD Big Dually Long Box 2WD	2500HD Standard Box 4x4	2500HD Long Box 4x4	3500HD Standard Box 4x4	3500HD Long Box 4x4	3500HD Big Dually Long Box 4x4
Vortec 6.0L V8/ 6-speed automatic	4.10	20,500	14,200	14,100	14,000	13,900	13,500	13,900	13,800	13,700	13,600	13,200
	3.73	16,000	9,700	9,600	9,500	9,400	9,000	9,400	9,300	9,200	9,100	8,700
Duramax 6.6L Turbo-Diesel V8/Allison 1000 6-speed auto	3.73	24,500	17,400	16,700	17,200	17,300	—	15,800	14,700	17,000	16,800	—
		30,500	—	—	—	—	22,800	—	—	—	—	22,400

2500HD AND 3500HD MAXIMUM PAYLOAD⁴ (LBS.)

Model	GVWR ⁵	REGULAR CAB	EXTENDED CAB		CREW CAB	
		Long Box	Standard Box	Long Box	Standard Box	Long Box
2500HD 2WD	9,300	3,670	—	—	—	—
	9,500	—	3,473	3,358	3,347	3,247
	10,000 ⁶	4,212 ⁶	—	—	—	—
2500HD 4x4	9,500	3,538	3,189	3,275	3,066	—
	9,900	—	—	—	—	3,305
3500HD 2WD Single Rear Wheel (SRW)	10,400	4,625	—	—	—	—
	10,500	—	—	—	4,187	—
	10,700	—	—	4,443	—	4,308
3500HD 2WD Dual Rear Wheel (DRW)	13,400	7,215	—	—	—	—
	13,000	—	—	6,321	—	6,198
3500HD 4x4 Single Rear Wheel (SRW)	10,700	4,609	—	—	—	—
	10,800	—	—	—	4,190	—
	11,000	—	—	4,455	—	4,266
3500HD 4x4 Dual Rear Wheel (DRW)	13,400	6,899	—	—	—	—
	13,000	—	—	6,033	—	5,856

1 Maximum trailer weight ratings are calculated assuming a base vehicle, except for any option(s) necessary to achieve the rating, plus driver. The weight of other optional equipment, passengers and cargo will reduce the maximum trailer weight your vehicle can tow. See your Chevy dealer for additional details. 2 Gross Combination Weight Rating. 3 Available 4th quarter 2011. 4 Maximum payload capacity includes weight of driver, passengers, optional equipment and cargo. 5 Gross Vehicle Weight Rating (GVWR). When properly equipped; includes vehicle, passengers, cargo and equipment. 6 Requires available Performance Package. NOTE: Trailer tongue weight should be 10 to 15 percent of total loaded trailer weight (up to 1,500 lbs. on 2500HD and 3500HD models). Trailer kingpin weight should be 15 to 25 percent of total loaded trailer weight (up to 3,000 lbs. on 2500HD models and up to 3,500 lbs. on 3500HD models). • Addition of trailer tongue weight/trailer kingpin weight cannot cause vehicle weights to exceed Rear Gross Axle Weight Rating (RGAWR) or Gross Vehicle Weight Rating (GVWR). These ratings can be found on the certification label located on the driver door or doorframe. • Fifth-wheel trailer hitch is available as a dealer-installed accessory on select models. See the Trailing Basics for more trailering information.

TRAILERING BASICS

NOTE: Towing a trailer involves all major vehicle systems of your Chevy truck. Easy and safe trailering requires a properly equipped vehicle, additional trailering equipment and an appropriate trailer. It also requires loading both the vehicle and trailer properly, using safe driving techniques, meeting regional legal requirements, and following break-in and maintenance schedules. The vehicle owner is responsible for obtaining the proper equipment (hitch ball, hitch of the proper size and capacity) required to safely tow both the trailer and the load. For more information, consult your Owner's Manual or speak to a trailering expert at your Chevrolet dealership. These charts will assist in determining how to best equip your Chevy truck for trailering. To help you understand the charts, consider these trailering factors:

RGAWR AND GVWR: Addition of trailer hitch weight cannot cause vehicle weights to exceed Rear Gross Axle Weight Rating (RGAWR) or Gross Vehicle Weight Rating (GVWR). These ratings can be found on the certification label located on the driver door or door frame.

GCWR: The Gross Combination Weight Rating is the total allowable weight of the completely loaded vehicle and trailer.

TRAILER WEIGHT RATING: This rating is determined by subtracting the tow vehicle's weight (curb weight) from the GCWR. Base vehicle (curb) weight is used, so additional passenger, equipment and cargo weight reduces this rating.

NOTE: The safety steps described here are by no means the only precautions to be taken when trailering. See your Chevy Silverado Owner's Manual for additional guidelines and trailering tips.

TRAILERING CAUTION: If you don't use the correct equipment and drive properly, you can lose control of your vehicle when you pull a trailer. If the trailer is too heavy, your vehicle brakes may be less effective. You and your passengers could be seriously injured. Pull a trailer only after you have taken the following steps.

TRAILER BRAKES: If your trailer weighs 2,000 lbs. loaded, then it must have its own adequate brakes. Be sure to read and follow the instructions for the trailer brake controller so that it is installed, adjusted and maintained properly.

HITCHES: It's important to have the correct hitch equipment. If you have to make any holes in the body of your vehicle to install a trailer hitch, be sure to seal the holes if you ever remove the hitch. If they're not sealed, dirt, water and deadly carbon monoxide from the exhaust can get into your vehicle.

FIFTH-WHEEL TRAILERING: Some Silverado pickups can be equipped with a fifth-wheel or gooseneck trailer hitch. Follow the manufacturer's directions for installation, but note that the hitch must be attached to the truck frame. Do not use the pickup bed for additional support. For proper kingpin tongue load distribution and control of the trailer, the hitch must be mounted so the kingpin load is placed ahead of the rear axle centerline. Fifth-wheel trailer kingpin loads are higher than conventional trailer tongue loads, so pay careful attention to the truck's payload capacity and rear axle weight ratings. Your Chevy dealer can help you calculate the maximum allowable payload and GVWR required for your fifth-wheel trailering application. The weight of any additional equipment and all passengers other than the driver must be subtracted from the payload weight to determine the maximum kingpin load available.

CLOCK OUT

When the job switches off, Silverado HD switches on with the available **Z71 OFF-ROAD PACKAGE**. Hard-baked ruts, soupy mud sloughs or hardscrabble rock-studded slopes—they're all walks in the park with a Z71 outfit. A **SKID PLATE PACKAGE**, including frame-mounted shields, helps protect the front underbody, oil pan, differential case and transfer case from unforgiving rocks and kicked-up debris. If a rear wheel slips, the **AUTOMATIC LOCKING REAR DIFFERENTIAL** can redirect wasted torque from a spinning wheel to the one that keeps its grip, reserving power and maintaining forward drive. The new **Z71 APPEARANCE PACKAGE** lends a rugged, adventure-seeking appearance. Features include body-color front bumper and grille surround, unique Z71 decals, foglamps, bright doorsill plates and 18" polished forged-aluminum wheels. After all, off-road is a state of mind. With Silverado HD, it's also state of the art.

Silverado 2500HD Crew Cab Standard Box LTZ 4x4 shown in Victory Red with available Z71 Appearance Package.





LTZ INTERIOR AT A GLANCE

- Heated, leather-appointed front bucket seats with 10-way power adjusters
- Available power-adjustable pedals
- Remote vehicle starter system
- Choice of Ebony, Light Cashmere-Color or Light Titanium-Color interiors
- Dual-zone automatic climate controls



Silverado 3500HD Dually Crew Cab interior shown in Light Cashmere-Color/Dark Cashmere-Color with available features.





Silverado LT instrument panel shown in Light Titanium-Color/Dark Titanium-Color with available features.

Silverado was built for your independent streak, but it recognizes that everyone has a social side. That's why Silverado keeps adding ways to keep you both protected and easily connected so you'll not be far from what matters.

ONSTAR® DIRECTIONS & CONNECTIONS®¹

Silverado takes you a long way from anywhere, which makes the reach of OnStar's advanced technology that much more valuable. In a collision, vehicle sensors automatically alert a trained OnStar Advisor, who can request that emergency help be sent to your exact location, even if you can't respond. And when work calls you to unfamiliar terrain, Turn-by-Turn Navigation gives you voice-guided directions to help you find your way. It's all standard on most models for six months.

ONSTAR REMOTELINK™ MOBILE APP²

Working and playing outside can mean plenty of cold mornings. Download the OnStar REMOTELINK app to your smartphone and you can remotely start your engine,³ warm the cabin and get your rig ready to roll. Lock or unlock your doors, or turn on your horn and lights to find your truck in a crowd.

NAVTRAFFIC⁴

Need to make a delivery? Have to pick up equipment in a part of town notorious for gridlock? Use the available NavTraffic system to receive detailed traffic information when you need it most—while you're on the road. Available on LTZ models.

CHEVROLET WI-FI BY AUTONET MOBILE⁵

Work doesn't always end when you leave the office. Available Autonet Wi-Fi Mobile lets you order parts, apply for permits, or look up building code information from your Silverado. Or on your getaway time, check fishing regulations, weather conditions or social networks through the Internet. The link is accessible for multiple devices simultaneously in the truck and up to 150 feet away.

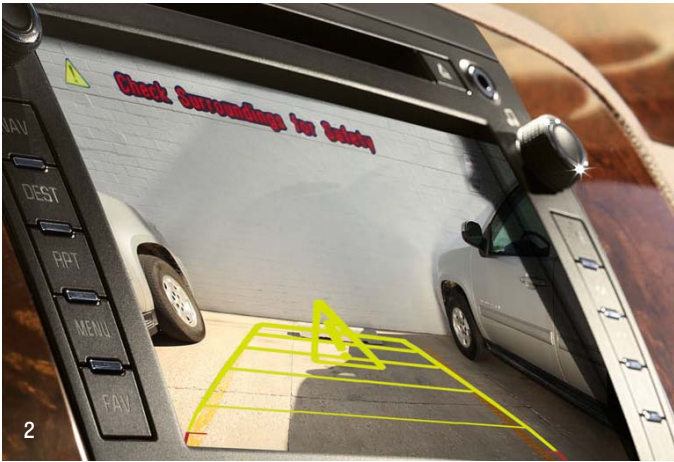
BLUETOOTH® AT YOUR COMMAND⁶

Make, answer and end calls without taking your hands off the wheel or your eyes from the road. Just tap the steering-wheel controls and you're in touch. Bluetooth wireless technology for select phones is standard on LTZ models.

1 Visit onstar.com for coverage map, details and system limitations. Services vary by model and conditions. OnStar acts as a link to existing emergency service providers. 2 Requires Android or iPhone platform and active OnStar subscription, which is standard for six months on most models. 3 Requires available remote vehicle starter system. 4 Requires available navigation radio. Requires a subscription sold separately by SiriusXM. Available only in select markets. For more information, see siriusxm.com/navtraffic. 5 Monthly rate applies. Visit autonetmobile.com for details and coverage map. 6 Go to gm.com/bluetooth to find out which phones are compatible with the vehicle.

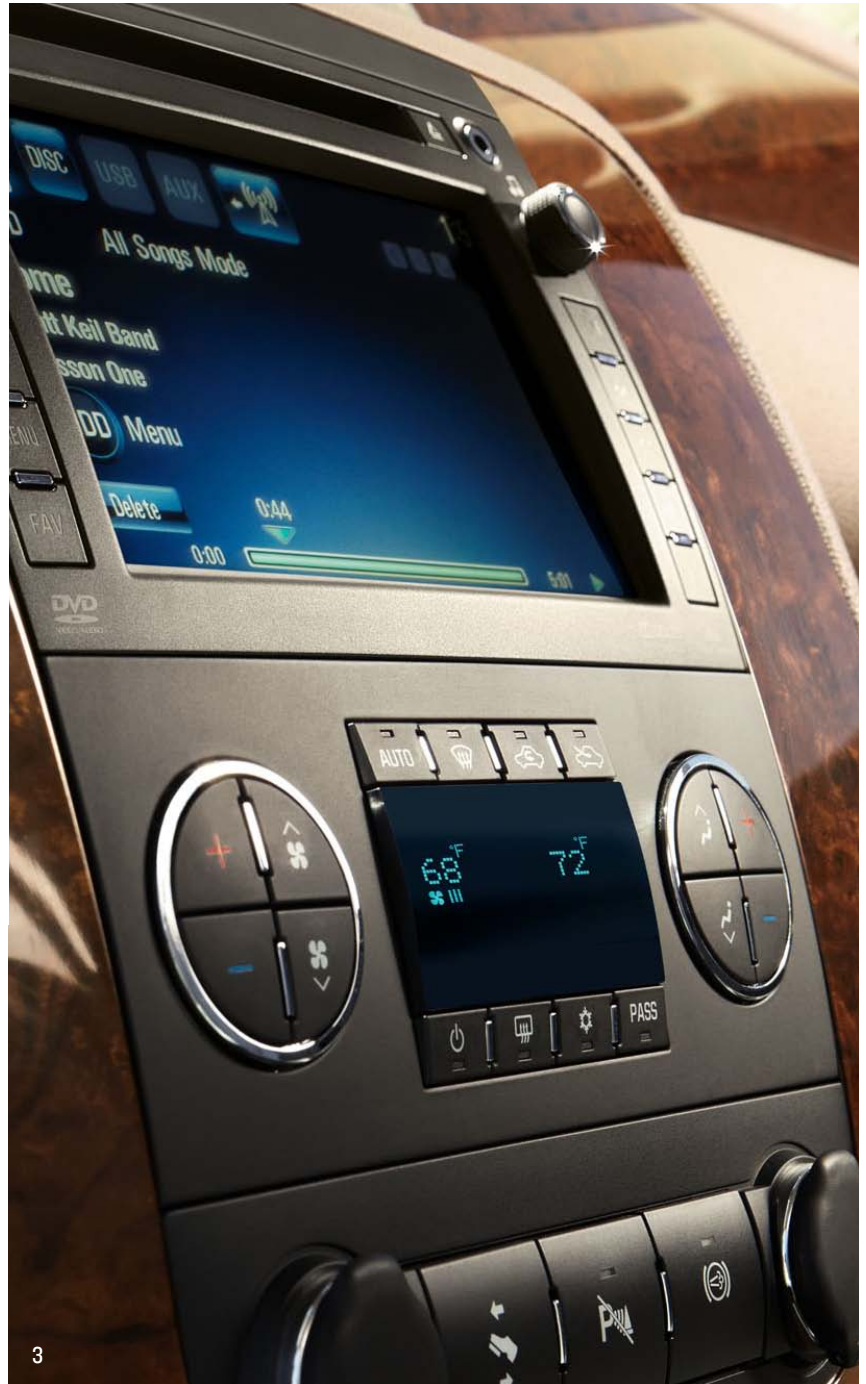


NAVIGATE

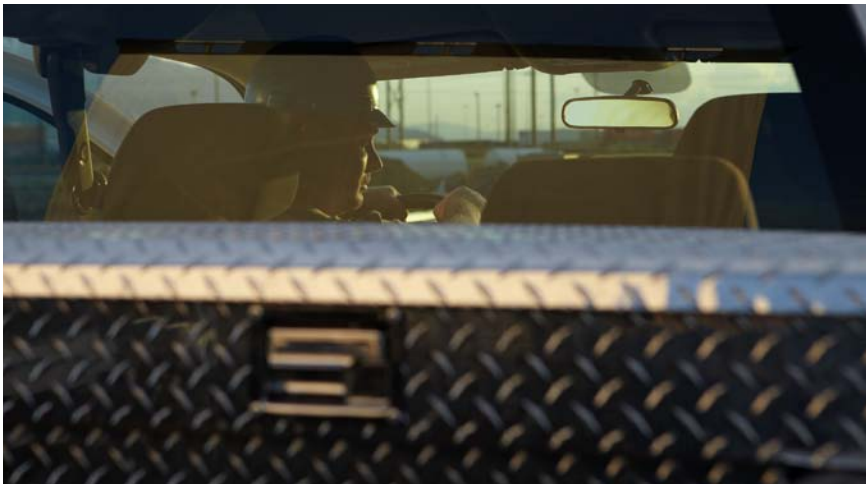


Whether you're making deliveries in an unfamiliar town or scouting a new fishing hole, Silverado offers a new touch-screen navigation system that displays maps and information to help you find your way. Available on select models, this satellite-based system plays **SIRIUSXM SATELLITE RADIO**¹ and provides **NAVTRAFFIC**² updates. Or you can listen to music from your CDs or MP3 player. To further customize your driving tunes, plug your iPod^{®3} or even a music-loaded flash drive directly into an available USB port.⁴ A hard drive, with up to 30 GB available, enables **PAUSE AND PLAY**, which lets you pause a live radio broadcast and record up to 20 minutes of it for playback later. The radio's color screen also integrates with the **AVAILABLE REAR VISION CAMERA** display to give you a much clearer vision of trailer hookups. Backing up or going forward, it's all part of the way Silverado changes the way you see the world.

¹ Requires a subscription sold separately by SiriusXM. Available only in the 48 contiguous United States and Washington, D.C. Visit siriusxm.com for more information. ² Requires a subscription sold separately by SiriusXM after three months. Available only in select markets. For more information, see siriusxm.com/navtraffic. ³ iPod is a mobile digital device. iPod is a registered trademark of Apple Inc., registered in the U.S. and other countries. ⁴ Not compatible with all devices.

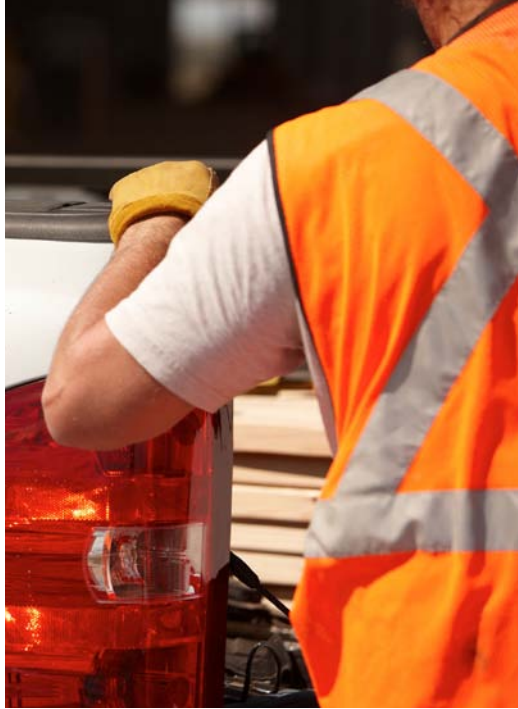


1. Available **NAVTRAFFIC**² includes a Map View feature with detailed traffic updates so you can make last-minute course corrections and choose the route that's best for you.
2. The available **REAR VISION CAMERA** features guidelines to help direct you into spaces.
3. The **MEDIA SCREEN** shows the different available media sources.



TOYS ARE JUST AS IMPORTANT AS TOOLS





Your truck is a part of you and the way you live your life. It shows up to work every morning and doesn't complain. At the end of the week, it powers your escape and drags along every bit of gear you need to get the most out of your time off. With a **HIGH-STRENGTH STEEL FRAME** and **WIDE LEAF SPRINGS**, Silverado HD can handle up to **7,215 LBS¹ OF PAYLOAD**. And because family and friends are always part of your life, Silverado HD offers **REGULAR CAB**, **EXTENDED CAB** or **CREW CAB** models. When you need to load up in a hurry, Extended Cab models offer easy access, with rear doors that open wider than any other full-size pickup. Inside, both Extended Cab and Crew Cab **REAR BENCH SEATS FLIP UP** to offer additional interior cargo space. **DUAL GLOVE BOXES** are standard on HD Work Truck and LT models. You can also order a **SILVERADO 3500HD REGULAR CAB** and **CREW CAB CHASSIS CAB** (not shown) with a bare frame that's designed to upfit. It offers Gross Vehicle Weight Ratings (GVWRs) up to 13,200 lbs.² making a solid foundation for a dump body, service body, flat bed or Ambulance Prep Package. The available Allison transmission and Duramax Diesel offer **POWER TAKEOFF (PTO)** capability³ to operate auxiliary equipment like a dump body or hydraulic motors. At Chevy, we know that one hundred and ten percent is how you do things. It makes life fuller, on the job site and on the weekends. You want a truck that can match your efforts. Hauling high-powered toys or working as a high-tech rugged tool, Silverado HD has the structural integrity to take you through your work week and beyond.

¹ Requires Regular Cab model and gas engine. Maximum payload capacity includes weight of driver, passengers, optional equipment and cargo. ² When properly equipped; includes weight of vehicle, driver, passengers, cargo and optional equipment. ³ Additional equipment is required for PTO installation by an independent supplier. The provisions for PTO include an instrument panel switch, an electrical interface and an internal PTO gear in the transmission.





Because cargo comes in as many shapes and sizes as there are jobs, Silverado HD offers a **CARGO MANAGEMENT SYSTEM**. Whether it's tools or a tailgate party, lumber or loose gravel, we help secure your load. This dealer-installed option, available from Chevy Accessories, uses **SLIDING HOOKS** embedded in C-channel tracks along both sides and the front of the box. Each anchor in this integrated, configurable system is rated up to 500 lbs¹. Install a **STATIONARY TOOLBOX**, an overhead rack system or a tonneau cover to keep your gear secure and out of sight—all accessories designed to make the way you work more efficient. And when ordered with your new vehicle, every Chevy Accessory is covered by the GM 3-year/36,000-mile **NEW VEHICLE LIMITED WARRANTY**.²

chevy.com/silverado
CUSTOM-DESIGNED ACCESSORIES
FOR SILVERADO

¹ Cargo and load capacity limited by weight and distribution. ² Whichever comes first. See dealer for details.



1. 17" Steel (2500HD)
2. 17" Chrome-Clad Steel (2500HD)
3. 18" Steel (2500HD/3500HD Single Rear Wheel)
4. 17" Machined-Aluminum (2500HD)
5. 18" Polished Forged-Aluminum
(2500HD/3500HD Single Rear Wheel)
6. 20" Polished Forged-Aluminum (2500HD)
7. 17" Steel with Chrome Overlay (3500HD Dual Rear Wheel)
Not shown: 17" Steel (3500HD Dual Rear Wheel)
8. 17" Polished Forged-Aluminum
(3500HD Dual Rear Wheel, Crew Cab only)

COLORS



Black



Black Granite Metallic¹



Imperial Blue Metallic¹



Blue Granite Metallic



Victory Red



Mocha Steel Metallic¹



Graystone Metallic¹



Silver Ice Metallic



Summit White

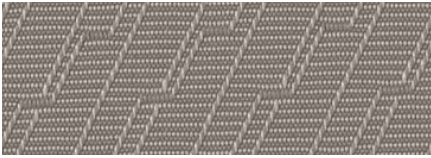
FABRICS



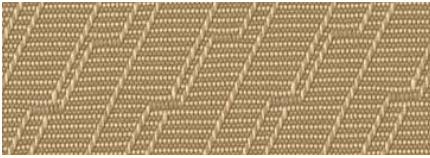
Dark Titanium-Color Vinyl²



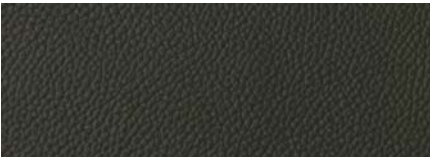
Ebony Cloth³



Light Titanium-Color Cloth⁴



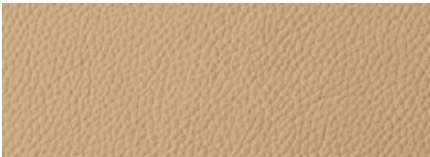
Light Cashmere-Color Cloth⁴



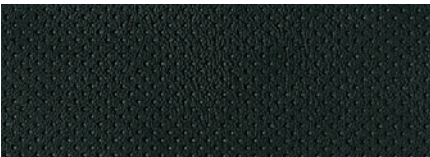
Ebony Leather Appointments⁵



Light Titanium-Color
Leather Appointments⁵



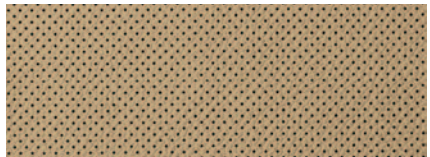
Light Cashmere-Color
Leather Appointments⁵



Ebony Perforated-Leather Appointments⁶



Light Titanium-Color Perforated-
Leather Appointments⁶



Light Cashmere-Color Perforated-
Leather Appointments⁶

REGULAR CAB

	WT	LT
EXTERIOR		
Bumper: Front, chrome	■	■
Rear, chrome; step-style with pad ¹	■	■
Door handles: Black	■	■
Grille: Chrome surround	■	■
Mirrors: Black, folding (2500HD)	■	–
Black, folding, power, heated (2500HD)	□ ²	■
Black, trailering, high-visibility vertical, manual-folding and extendable; with lower convex spotter glass (2500HD)	□	–
Black, trailering, high-visibility vertical, manual-folding and extendable; with lower convex spotter glass (3500HD)	■	–
Black, trailering, vertical, power, heated, manual-folding and extendable; with turn-signal indicators and lower convex spotter glass (2500HD)	–	□ ³
Black, trailering, vertical, power, heated, manual-folding and extendable; with turn-signal indicators and lower convex spotter glass (3500HD)	–	■
Recovery hooks: Two front	■	■
ENGINE/CHASSIS		
Air cleaner: High-capacity	■	■
Differential: Automatic locking rear (standard on all 3500HD models)	□	□
Engine block heater	□	□
Exhaust brake system: Diesel ⁴	■	■
Cooler: Engine oil, heavy-duty, external	■	■
Cooler: Transmission fluid, auxiliary, heavy-duty, external	■	■
Skid Plate Package: ⁵ Frame-mounted shield protecting front underbody, oil pan, differential case and transfer case (4x4)	□	□
Snow Plow Prep Package: 10-amp power for backup and roof emergency light, high-flow front bumper, forward lamp wiring harness, provision for cab roof-mounted lamp and Skid Plate Package (4x4)	□	□
Steering: Power, recirculating ball	■	■
Suspension: Front independent, torsion bar	■	■
Rear multi-stage; with multi-leaf asymmetrical springs	■	■
Suspension Packages: Z85 Handling/Trailerling	■	■
Z71 Off-Road ¹ (SRW)	–	□ ⁶
Trailerling Package: ¹ Trailer hitch platform with 2.5" receiver and 2" adapter, 7-wire harness mated to 7-way sealed connector, integrated trailer brake controller and automatic locking rear differential ⁷ (standard on all 3500HD models)	□	□
Transfer case (4x4): Floor-mounted, manual shift-on-the-fly	■	–
Transfer case (4x4): Electronic, with rotary dial	–	■
Z71 Off-Road Package: ¹ Skid Plate Package, on-/off-road tires and Z71 decals (SRW)	–	□ ⁶
SAFETY & SECURITY		
Air bags: ⁸ Driver and right-front passenger	■	■
Head-curtain with rollover sensor, seat-mounted for thorax and pelvic protection (SRW)	□	□
Brake controller: Trailer, ABS-integrated ⁶	□	□
Brakes: Four-wheel disc (ABS), with Dynamic Rear Proportioning	■	■
OnStar ⁹ with Directions & Connections	□ ¹⁰	–
OnStar ⁹ with Directions & Connections standard for six months	–	■
StabiliTrak Electronic Stability Control System with Trailer Sway Control and Hill Start Assist ¹ (SRW)	■	■

■ STANDARD □ AVAILABLE – NOT AVAILABLE

	WT	LT
INTERIOR		
Bluetooth [®] wireless technology ¹¹ for select phones	□ ¹²	□ ¹³
Climate control: Single-zone, manual	■	■
Cruise control	■	■
Convenience Package: Power-adjustable pedals, rear-window defogger, Universal Home Remote transmitter and remote vehicle starter system	–	□
Defogger: Rear-window	□	□
Door locks: Power, programmable; with Remote Keyless Entry	□ ¹⁴	■
Driver Information Center (DIC) display	■	■
DIC controls	□ ¹⁵	□ ¹³
Glove boxes: Dual	■	■
Interior Plus Package: Six-way power-adjustable driver seat, CD/MP3 player and USB port, ¹⁶ steering wheel-mounted audio controls, Bluetooth wireless technology ¹¹ for select phones, EZ Lift locking tailgate and foglamps	–	□
Remote vehicle starter system	–	□ ¹⁷
Steering column: Tilt-Wheel, adjustable	■	■
Steering wheel-mounted audio and cruise controls	□ ¹⁵	□ ¹³
Windows, Locks and Mirrors Power Package: Power driver and passenger side windows with uplevel door panels, outside heated power-adjustable manual folding mirrors and power door locks. (Remote Keyless Entry sold separately)	□	–
Windows: Power, with driver's Express-Down feature	□ ²	■
SEATING		
Vinyl 40/20/40 split-bench front seat with recliners and fold-down center armrest with storage	■	–
Cloth 40/20/40 split-bench front seat with recliners, manual lumbar support and fold-down center armrest with storage	□	–
Premium Cloth 40/20/40 split-bench front seat with recliners, manual lumbar support, fold-down center armrest with storage and lockable underseat storage	–	■
AUDIO SYSTEMS		
AM/FM stereo	■	–
AM/FM stereo with CD/MP3 player	□	■
AM/FM stereo with CD/MP3 player and USB port ¹⁶	–	□ ¹³
SiriusXM Satellite Radio ¹⁸	□ ¹²	–
SiriusXM Satellite Radio ¹⁹ with three trial months	–	■
WHEELS		
17" steel (2500HD)	■	–
17" steel (3500HD DRW and Chassis Cab)	■	–
17" chrome-clad steel (2500HD)	□	–
17" machined-aluminum (2500HD)	–	■
17" steel with chrome overlay (3500HD DRW and Chassis Cab)	–	■
18" steel (2500HD)	□	–
18" steel (3500HD SRW)	■	–
18" polished forged-aluminum (2500HD)	–	□
18" polished forged-aluminum (3500HD SRW)	–	■

¹ Not available on Chassis Cab models. ² Requires available Windows, Locks and Mirrors Power Package. ³ Requires available auto-dimming inside rearview mirror. ⁴ Requires available Duramax 6.6L Turbo-Diesel V8 engine. ⁵ 2WD models require available Z71 Off-Road Package. ⁶ Requires available Trailerling Package. ⁷ Automatic Locking Rear Differential not included on Fleet orders on 2500HD models. ⁸ Always use safety belts and child restraints. Children are safer when properly secured in a rear seat in the appropriate child restraint. See the Owner's Manual for more information. ⁹ Visit onstar.com for coverage map, details and system limitations. Services vary by model and conditions. ¹⁰ Requires available power door locks and Remote Keyless Entry. ¹¹ Go to gm.com/bluetooth to find out which phones are compatible with the vehicle. ¹² Requires available OnStar and AM/FM stereo with CD/MP3 player. ¹³ Requires available Interior Plus Package. ¹⁴ Remote Keyless Entry sold separately when Windows, Locks and Mirrors Power Package is ordered. ¹⁵ Requires available Bluetooth wireless technology. ¹⁶ Not compatible with all devices. ¹⁷ Requires available Convenience Package. ¹⁸ Requires a subscription sold separately by SiriusXM. Available only in the 48 contiguous United States and Washington, D.C. Visit siriusxm.com for more information. ¹⁹ Requires a subscription sold separately by SiriusXM after three-month trial. Available only in the 48 contiguous United States and Washington, D.C. Visit siriusxm.com for more information. ²⁰ Depending on model and tire size selected. ²¹ 322 horsepower on HD models with box delete vehicles. ²² 335 horsepower/685 lb.-ft. of torque on HD models with box delete. ²³ Requires box delete on 2WD models.

DIMENSIONS



SPECIFICATIONS

PICKUP MODEL	SERIES	DRIVE	TRIM LEVELS	STANDARD ENGINE	HP @ RPM	TORQUE @ RPM	STANDARD TRANSMISSION	OPTIONAL ENGINES	HP @ RPM	TORQUE @ RPM
REGULAR CAB LONG BOX	2500HD (3/4-ton)	2WD/4x4	WT, LT, LTZ	Vortec™ 6.0L V8	360 @ 5400 ²¹	380 @ 4200	Hydra-Matic® 6-speed automatic overdrive	Duramax 6.6L Turbo-Diesel V8	397 @ 3000 ²²	765 @ 1600 ²²
	3500HD (1-ton)	2WD/4x4	WT, LT, LTZ	Vortec 6.0L V8	322 @ 4400	380 @ 5400	Hydra-Matic 6-speed automatic overdrive	Duramax 6.6L Turbo-Diesel V8 ²³	397 @ 3000 ²²	765 @ 1600 ²²
REGULAR CAB CHASSIS CAB	3500HD (1-ton)	2WD/4x4	WT, LT	Vortec 6.0L V8	322 @ 4400	380 @ 4200	Hydra-Matic 6-speed automatic overdrive	Duramax 6.6L Turbo-Diesel V8	335 @ 3100	685 @ 1600

EXTENDED CAB

	WT	LT	LTZ
EXTERIOR			
Bumper: Front, chrome	■	■	■
Rear, chrome; step-style with pad	■	■	■
2500HD Custom Sport Truck Package: 20" polished forged-aluminum wheels, outside heated power-adjustable vertical trailing mirrors, Trailing Package, automatic locking rear differential, dual-zone automatic air conditioning, Bluetooth® for phone ¹ ; steering wheel-mounted audio controls, AM/FM stereo with CD/MP3 player and USB port ² ; driver six-way power seat adjuster, foglamps, EZ Lift locking tailgate, inside rearview auto-dimming mirror, 6" oval chromed tubular assist steps from Chevy Accessories, bodyside moldings with chrome accents and chrome door handles	–	□	–
3500HD Custom Sport Truck Package: Dual-zone automatic air conditioning, Bluetooth for phone ¹ ; steering wheel-mounted audio controls, AM/FM stereo with CD/MP3 player and USB port ² ; driver six-way power seat adjuster, foglamps, EZ Lift locking tailgate, 6" oval chromed tubular assist steps from Chevy Accessories, bodyside moldings with chrome accents and chrome door handles (SRW)	–	□	–
Door handles: Black	■	■	–
Body-color	–	□ ³	■
Fog lamps: Halogen	–	□ ⁴	■
Grille: Chrome surround	■	■	■
LTZ Plus Package: EZ Lift locking tailgate, Universal Home Remote transmitter, power-adjustable pedals and Rear Parking Assist; single rear wheel models include rear wheelhouse liners from Chevy Accessories	–	–	□
Mirrors: Black, folding (2500HD)	■	–	–
Black, folding, power, heated (2500HD)	□ ⁵	■	–
Body-color, power, heated; with turn-signal indicators in glass, driver-side auto-dimming feature and power-folding feature (2500HD)	–	□	■
Black, trailing, high-visibility vertical, manual-folding and extendable; with lower convex spotter glass (2500)	□	–	–
Black, trailing, high-visibility vertical, manual-folding and extendable; with lower convex spotter glass (3500)	■	–	–
Black, trailing, vertical, power, heated, manual-folding and extendable; with turn-signal indicators and lower convex spotter glass (2500HD)	–	□ ⁶	□
Black, trailing, vertical, power, heated, manual-folding and extendable; with turn-signal indicators and lower convex spotter glass (3500HD)	–	■	■
Rear Parking Assist	–	□ ⁷	□ ⁸
Recovery hooks: Two front	■	■	■
Z71 Appearance Package: 18" polished forged-aluminum wheels, all-terrain tires, foglamps, body-color outside mirrors (2500HD) and door handles; unique Z71 decals, instrument cluster, body-color grille with chrome insert, body-color front bumper and sill plates	–	□ ⁹	□ ⁹
Z71 Off-Road Package: Skid Plate Package, on-/off-road tires and Z71 decals (SRW)	–	□ ¹⁰	□
ENGINE/CHASSIS			
Air cleaner: High-capacity	■	■	■
Differential: Automatic locking rear (standard on all 3500HD models)	□	□	■
Engine block heater	□	□	□
Exhaust brake system: Diesel ¹¹	■	■	■
Cooler: Engine oil, heavy-duty, external	■	■	■
Cooler: Transmission fluid, auxiliary, heavy-duty, external	■	■	■
Skid Plate Package: ¹² Frame-mounted shield protecting front underbody, oil pan, differential case and transfer case (4x4)	□	□	□

■ STANDARD □ AVAILABLE – NOT AVAILABLE

	WT	LT	LTZ
ENGINE/CHASSIS (CONTINUED)			
Snow Plow Prep Package: 10-amp power for backup and roof emergency light, high-flow front bumper, forward lamp wiring harness, provision for cab roof-mounted lamp and Skid Plate Package (4x4)	□	□	□
Steering: Power, recirculating ball	■	■	■
Suspension: Front, independent, torsion bar	■	■	■
Rear multi-stage; with multi-leaf asymmetrical springs	■	■	■
Suspension packages: Z85 Handling/Trailing	■	■	■
Z71 Off-Road (SRW)	–	□ ¹⁰	□
Trailing Package: Trailer hitch platform with 2.5" receiver and 2" adapter, 7-wire harness mated to 7-way sealed connector, integrated trailer brake controller and automatic locking rear differential ¹³ (standard on all 3500HD models)	□	□	■
Transfer case (4x4): Floor-mounted, manual shift-on-the-fly	■	–	–
Transfer case (4x4): Electronic, with rotary dial	–	■	■
SAFETY & SECURITY			
Air bags: ¹⁴ Driver and right-front passenger	■	■	■
Head-curtain with rollover sensor, seat-mounted for thorax and pelvic protection (SRW)	□	□	□
Brake controller: Trailer, ABS-integrated ¹⁰	□	□	■
Brakes: Four-wheel disc (ABS), with Dynamic Rear Proportioning	■	■	■
OnStar ¹⁵ with Directions & Connections	□ ¹⁶	–	–
OnStar ¹⁵ with Directions & Connections for six months	–	■	■
StabiliTrak Electronic Stability Control System with Trailer Sway Control and Hill Start Assist (SRW)	■	■	■
INTERIOR			
Bluetooth® wireless technology ¹ for select phones	□ ¹⁷	□ ¹⁸	■
Climate control: Single-zone, manual	■	■	–
Dual-zone, automatic	–	□ ¹⁸	■
Cruise control	■	■	■
Convenience Package: Power-adjustable pedals, Rear Parking Assist, rear-window defogger, Universal Home Remote transmitter and remote vehicle starter system	–	□	–
Defogger: Rear-window ¹⁹	□	□	■
Door locks: Power, programmable, with Remote Keyless Entry	□ ²⁰	■	■
Glove boxes: Dual	■	■	–
Interior Plus Package: Six-way power-adjustable driver seat, CD/MP3 player and USB port ² ; steering wheel-mounted audio controls, Bluetooth wireless technology ¹ for select phones, dual-zone automatic temperature controls, EZ Lift locking tailgate and foglamps	–	□	–
Mirror: Inside rearview: auto-dimming (2500HD)	–	□ ²¹	■
Inside rearview: auto-dimming (3500HD)	–	■	■
Rear vision camera system (with display in rearview mirror or nav screen)	–	□ ²²	□ ⁸
Remote vehicle starter system	–	□ ⁷	■
Sunroof: Power-sliding, with Express-Open feature and wind deflector	–	–	□ ²³
Windows, Locks and Mirrors Power Package: Power driver and passenger side windows with uplevel door panels, outside heated power-adjustable manual folding mirrors and power door locks. (Remote Keyless Entry sold separately)	□	–	–
Window: Power-sliding, rear ²⁴	–	□	□
Windows: Power, and rear full-drop, with driver's Express-Down feature	□ ⁵	■	■

1 Go to gm.com/bluetooth to find out which phones are compatible with the vehicle. 2 Not compatible with all devices. 3 Requires available Z71 Appearance Package. 4 Requires available Custom Sport Truck Package, Interior Plus Package or Z71 Appearance Package. 5 Requires available Windows, Locks and Mirrors Power Package. 6 Requires available auto-dimming inside rearview mirror or auto-dimming inside rearview mirror with rear camera display. 7 Requires available Convenience Package. 8 Requires available LTZ Plus Package. 9 Requires Z71 Off-Road Package. 10 Requires available Trailing Package. 11 Requires available Duramax 6.6L Turbo-Diesel V8 engine. 12 2WD models require available Z71 Off-Road Package. 13 Automatic Locking Rear Differential not included on Fleet orders on 2500HD models. 14 Always use safety belts and child restraints. Children are safer when properly secured in a rear seat in the appropriate child restraint. See the Owner's Manual for more information. 15 Visit onstar.com for coverage map, details and system limitations. Services vary by model and conditions. 16 Requires available power door locks and Remote Keyless Entry. 17 Requires available OnStar and AM/FM stereo with CD/MP3 player. 18 Requires available Interior Plus Package or Custom Sport Truck Package. 19 Not available with power-sliding rear window. 20 Remote Keyless Entry sold separately when Windows, Locks and Mirrors Power Package is ordered. 21 Requires available rear vision camera system or trailing mirrors. 22 Requires available Convenience Package and Interior Plus Package or Custom Sport Truck Package. 23 Not available with Snow Plow Prep Package. 24 Not available with rear-window defogger. 25 Requires available head-curtain side-impact air bags on 2500HD and 3500HD SRW models. 26 Requires available front bucket seats and Interior Plus Package. 27 Requires available navigation radio. Requires a subscription sold separately by SiriusXM. Available only in select markets. For more information, see siriusxm.com/navtraffic. 28 Requires a subscription sold separately by SiriusXM. Available only in the 48 contiguous United States and Washington, D.C. Visit siriusxm.com for more information. 29 Requires a subscription sold separately by SiriusXM after three-month trial. Available only in the 48 contiguous United States and Washington, D.C. Visit siriusxm.com for more information. 30 Depending on model and tire size selected. 31 322 horsepower on HD models with box delete vehicles. 32 335 horsepower/685 lb.-ft. of torque on HD models with box delete.

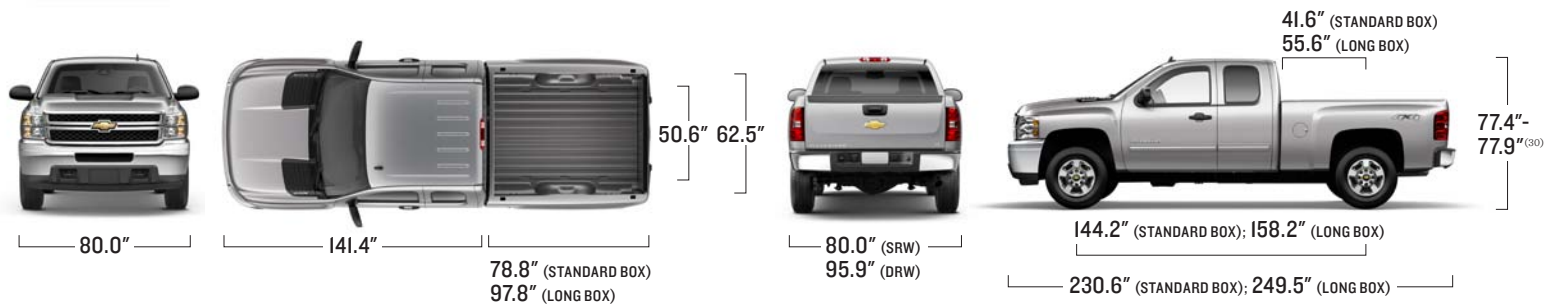
EXTENDED CAB

	WT	LT	LTZ
SEATING			
Vinyl 40/20/40 split-bench front seat with recliners and fold-down center armrest with storage	■	-	-
Cloth 40/20/40 split-bench front seat with recliners, manual lumbar support and fold-down center armrest with storage	□	-	-
Premium Cloth 40/20/40 split-bench front seat with recliners, manual lumbar support, fold-down center armrest with storage and lockable underseat storage	-	■	-
Custom Leather-appointed 40/20/40 split-bench front seat with recliners, manual lumbar support, fold-down center armrest with storage and lockable underseat storage	-	□	-
Premium Cloth, reclining, six-way power-adjustable front bucket seats and manual lumbar support	-	□	-
Custom Leather-appointed, reclining, six-way power-adjustable front bucket seats and manual lumbar support	-	□	-
Custom Leather-appointed, reclining, heated, 10-way power-adjustable front bucket seats with memory and power lumbar support	-	-	■
Custom Leather-appointed with perforated inserts, reclining, heated and cooled, 10-way power-adjustable front bucket seats with memory and power lumbar support ²⁵	-	-	□
Rear seat: Flip-up, full-width bench	■	-	-
Flip-up, 60/40 split-bench	-	■	■
AUDIO SYSTEMS			
AM/FM stereo	■	-	-
AM/FM stereo with CD/MP3 player	□	■	-

■ STANDARD □ AVAILABLE - NOT AVAILABLE

	WT	LT	LTZ
AUDIO SYSTEMS (CONTINUED)			
AM/FM stereo with CD/MP3 player and USB port ²	-	□ ¹⁸	■
AM/FM stereo with in-dash six-disc CD/MP3 changer and USB port ²	-	-	□
Bose® sound system	-	□ ²⁶	■
NavTraffic ²⁷	-	-	□
Touch-screen navigation radio	-	-	□
SiriusXM Satellite Radio ²⁸	□ ¹⁷	-	-
SiriusXM Satellite Radio ²⁹ with three trial months	-	■	■
WHEELS			
17" steel (2500HD)	■	-	-
17" steel (3500HD DRW)	■	-	-
17" chrome-clad steel (2500HD)	□	-	-
17" machined-aluminum (2500HD)	-	■	-
17" steel with chrome overlay (3500HD DRW)	-	■	■
18" steel (2500HD)	□	-	-
18" steel (3500HD SRW)	■	-	-
18" polished forged-aluminum (2500HD)	-	□	■
18" polished forged-aluminum (3500HD SRW)	-	■	■
20" polished forged-aluminum (2500HD)	-	□	□

DIMENSIONS



SPECIFICATIONS

PICKUP MODEL	SERIES	DRIVE	TRIM LEVELS	STANDARD ENGINE	HP @ RPM	TORQUE @ RPM	STANDARD TRANSMISSION	OPTIONAL ENGINES	HP @ RPM	TORQUE @ RPM
EXTENDED CAB STANDARD BOX	2500HD (3/4-ton)	2WD/4x4	WT, LT, LTZ	Vortec 6.0L V8	360 @ 5400 ³¹	380 @ 4200	Hydra-Matic 6-speed automatic overdrive	Duramax 6.6L Turbo-Diesel V8	397 @ 3000 ³²	765 @ 1600 ³²
EXTENDED CAB LONG BOX	2500HD (3/4-ton)	2WD/4x4	WT, LT, LTZ	Vortec 5.3L V8	360 @ 5400 ³¹	380 @ 4200	Hydra-Matic 6-speed automatic overdrive	Duramax 6.6L Turbo-Diesel V8	397 @ 3000 ³²	765 @ 1600 ³²
	3500HD (1-ton)	2WD/4x4	WT, LT, LTZ	Vortec 6.0L V8	322 @ 4400	380 @ 4200	Hydra-Matic 6-speed automatic overdrive	Duramax 6.6L Turbo-Diesel V8	397 @ 3000 ³²	765 @ 1600 ³²

CREW CAB

	WT	LT	LTZ ¹
EXTERIOR			
Bumper: Front, chrome	■	■	■
Rear, chrome; step-style with pad	■	■	■
2500HD Custom Sport Truck Package: 20" polished forged-aluminum wheels, outside heated power-adjustable vertical trailing mirrors, Trailing Package, automatic locking rear differential, dual-zone automatic air conditioning, Bluetooth [®] for phone, ² steering wheel-mounted audio controls, AM/FM stereo with CD/MP3 player and USB port, ³ driver six-way power seat adjuster, foglamps, EZ Lift locking tailgate, inside rearview auto-dimming mirror, 6" oval chromed tubular assist steps from Chevy Accessories, bodyside moldings with chrome accents and chrome door handles	–	□	–
3500HD Custom Sport Truck Package: Dual-zone automatic air conditioning, Bluetooth for phone, ² steering wheel-mounted audio controls, AM/FM stereo with CD/MP3 player and USB port, ³ driver six-way power seat adjuster, foglamps, EZ Lift locking tailgate, 6" oval chromed tubular assist steps from Chevy Accessories, bodyside moldings with chrome accents and chrome door handles. On dual rear wheel models, also includes 17" polished forged-aluminum wheels	–	□	–
Door handles: Black	■	■	–
Body-color	–	□ ⁴	■
Foglamps: Halogen	–	□ ⁵	■
Grille: Chrome surround	■	■	■
LTZ Plus Package: EZ Lift locking tailgate, Universal Home Remote transmitter, power-adjustable pedals and Rear Parking Assist; single rear wheel models include rear wheelhouse liners from Chevy Accessories	–	–	□
Mirrors: Black, folding (2500HD)	■	–	–
Black, folding, power, heated (2500HD)	□ ⁶	■	–
Body-color, power, heated; with turn-signal indicators in glass, driver-side auto-dimming feature and power-folding feature (2500HD)	–	□ ⁴	■
Black, trailing, high-visibility vertical, manual-folding and extendable; with lower convex spotter glass (2500)	□	–	–
Black, trailing, high-visibility vertical, manual-folding and extendable; with lower convex spotter glass (3500)	■	–	–
Black, trailing, vertical, power, heated, manual-folding and extendable; with turn-signal indicators and lower convex spotter glass (2500HD)	–	□ ⁷	□
Black, trailing, vertical, power, heated, manual-folding and extendable; with turn-signal indicators and lower convex spotter glass (3500HD)	–	■	■
Rear Parking Assist ¹	–	□ ⁸	□ ⁹
Recovery hooks: Two front	■	■	■
Z71 Appearance Package: 18" polished forged-aluminum wheels, all-terrain tires, foglamps, body-color outside mirrors (2500HD) and door handles; unique Z71 decals, instrument cluster, body-color grille with chrome insert, body-color front bumper and sill plates	–	□ ¹⁰	□ ¹⁰
Z71 Off-Road Package: Skid Plate Package, on-/off-road tires and Z71 decals (SRW)	–	□ ¹¹	□
ENGINE/CHASSIS			
Air cleaner: High-capacity	■	■	■
Differential: Automatic locking rear (standard on all 3500HD models)	□	□	■
Engine block heater	□	□	□
Exhaust brake system: Diesel ¹²	■	■	■
Cooler: Engine oil, heavy-duty, external	■	■	■
Cooler: Transmission fluid, auxiliary, heavy-duty, external	■	■	■
Skid Plate Package: ¹³ Frame-mounted shield protecting front underbody, oil pan, differential case and transfer case (4x4)	□	□	□

■ STANDARD □ AVAILABLE – NOT AVAILABLE

	WT	LT	LTZ ¹
ENGINE/CHASSIS (CONTINUED)			
Snow Plow Prep Package: 10-amp power for backup and roof emergency light, high-flow front bumper, forward lamp wiring harness, provision for cab roof-mounted lamp and Skid Plate Package (4x4)	□	□	□
Steering: Power, recirculating ball	■	■	■
Suspension: Front independent, torsion bar	■	■	■
Rear multi-stage; with multi-leaf asymmetrical springs	■	■	■
Suspension packages: Z85 Handling/Trailing	■	■	■
Z71 Off-Road ¹ (SRW)	–	□ ¹¹	□
Trailing Package: ¹ Trailer hitch platform with 2.5" receiver and 2" adapter, 7-wire harness mated to 7-way sealed connector, integrated trailer brake controller and automatic locking rear differential ¹⁴ (standard on all 3500HD models)	□	□	■
Transfer case (4x4): Floor-mounted, manual shift-on-the-fly	■	–	–
Transfer case (4x4): Electronic, with rotary dial	–	■	■
SAFETY & SECURITY			
Air bags: ¹⁵ Driver and right-front passenger	■	■	■
Head-curtain with rollover sensor, seat-mounted for thorax and pelvic protection (SRW)	□	□	□
Brake controller: Trailer, ABS-integrated ¹¹	□	□	■
Brakes: Four-wheel disc (ABS), with Dynamic Rear Proportioning	■	■	■
OnStar ¹⁶ with Directions & Connections	□ ¹⁷	–	–
OnStar ¹⁶ with Directions & Connections for six months	–	■	■
StabiliTrak Electronic Stability Control System with Trailer Sway Control and Hill Start Assist ¹ (SRW)	■	■	■
INTERIOR			
Bluetooth wireless technology ² for select phones	□ ¹⁸	□ ¹⁹	■
Climate control: Single-zone, manual	■	■	–
Dual-zone, automatic	–	□ ¹⁹	■
Cruise control	■	■	■
Convenience Package: Power-adjustable pedals, Rear Parking Assist, rear-window defogger, Universal Home Remote transmitter and remote vehicle starter system	–	□	–
Defogger: Rear-window ²⁰	□	□	■
Door locks: Power, programmable, with Remote Keyless Entry	■ ²¹	■	■
Glove boxes: Dual	■	■	–
Interior Plus Package: Six-way power-adjustable driver seat, CD/MP3 player and USB port, ³ steering wheel-mounted audio controls, Bluetooth wireless technology ² for select phones, dual-zone automatic temperature controls, EZ Lift locking tailgate and foglamps	–	□	–
Mirror: Inside rearview: auto-dimming (2500HD)	–	□ ²²	■
Inside rearview: auto-dimming (3500HD)	–	■	■
Rear vision camera system ¹ (with display in rearview mirror or nav screen)	–	□ ²³	□ ⁹
Remote vehicle starter system	–	□ ⁸	■
Sunroof: ¹ Power-sliding, with Express-Open feature and wind deflector	–	–	□ ²⁴
Windows, Locks and Mirrors Power Package: Power driver and passenger side windows with uplevel door panels, outside heated power-adjustable manual folding mirrors and power door locks. (Remote Keyless Entry sold separately)	□	–	–
Window: Power-sliding, rear ²⁵	–	□	■
Windows: Power, with driver's Express-Down feature	□ ⁶	■	■

¹ Not available on Chassis Cab models. ² Go to gm.com/bluetooth to find out which phones are compatible with the vehicle. ³ Not compatible with all devices. ⁴ Requires available Z71 Appearance Package. ⁵ Requires available Custom Sport Truck Package, Interior Plus Package or Z71 Appearance Package. ⁶ Requires available Windows, Locks and Mirrors Power Package. ⁷ Requires available auto-dimming inside rearview mirror or auto-dimming inside rearview mirror with rear camera display. ⁸ Requires available Convenience Package. ⁹ Requires available LTZ Plus Package. ¹⁰ Requires available Z71 Off-Road Package. ¹¹ Requires available Trailing Package. ¹² Requires available Duramax 6.6L Turbo-Diesel V8 engine. ¹³ 2WD models require available Z71 Off-Road Package. ¹⁴ Automatic Locking Rear Differential not included on Fleet orders on 2500HD models. ¹⁵ Always use safety belts and child restraints. Children are safer when properly secured in a rear seat in the appropriate child restraint. See the Owner's Manual for more information. ¹⁶ Visit onstar.com for coverage map, details and system limitations. Services vary by model and conditions. ¹⁷ Requires available power door locks and Remote Keyless Entry. ¹⁸ Requires available OnStar and AM/FM stereo with CD/MP3 player. ¹⁹ Requires available Custom Sport Truck Package or Interior Plus Package. ²⁰ Not available with power-sliding rear window. ²¹ Remote Keyless Entry sold separately when Windows, Locks and Mirrors Power Package is ordered. ²² Requires available rear vision camera system or trailing mirrors. ²³ Requires available Convenience Package and Interior Plus Package or Custom Sport Truck Package. ²⁴ Not available with Snow Plow Prep Package. ²⁵ Not available with rear-window defogger. ²⁶ Requires available head-curtain side-impact air bags on 2500HD and 3500HD SRW models. ²⁷ Requires available front bucket seats and Interior Plus Package. ²⁸ Requires available navigation radio. Requires a subscription sold separately by SiriusXM. Available only in select markets. For more information, see siriusxm.com/navtraffic. ²⁹ Requires a subscription sold separately by SiriusXM. Available only in the 48 contiguous United States and Washington, D.C. Visit siriusxm.com for more information. ³⁰ Requires a subscription sold separately by SiriusXM after three-month trial. Available only in the 48 contiguous United States and Washington, D.C. Visit siriusxm.com for more information. ³¹ Depending on model and tire size selected. ³² 322 horsepower on HD models with box delete vehicles. ³³ 335 horsepower/685 lb.-ft. of torque on HD models with box delete.

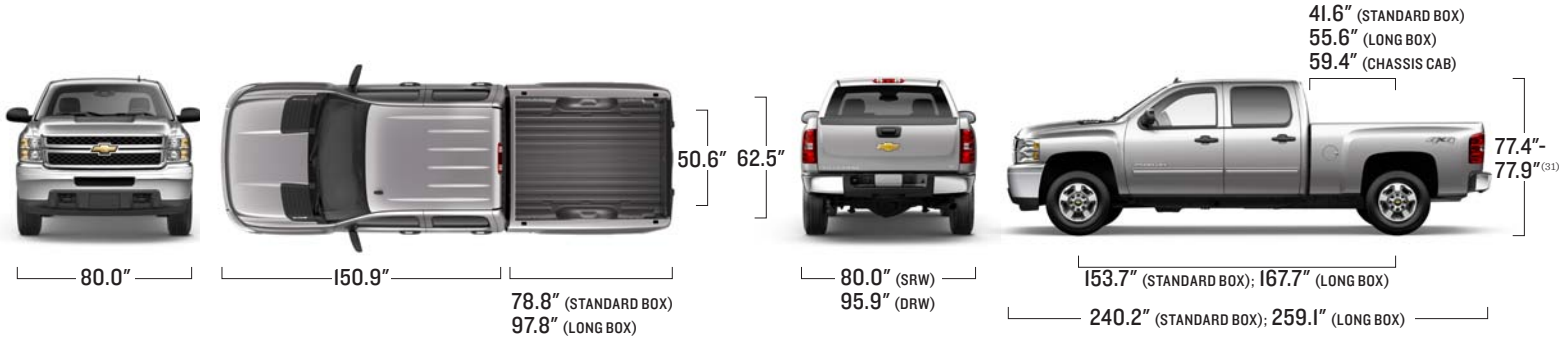
CREW CAB

	WT	LT	LTZ ¹
SEATING			
Vinyl 40/20/40 split-bench front seat with recliners, and fold-down center armrest with storage	■	-	-
Cloth 40/20/40 split-bench front seat with recliners, manual lumbar support, and fold-down center armrest with storage	□	-	-
Premium Cloth 40/20/40 split-bench front seat with recliners, manual lumbar support, fold-down center armrest with storage and lockable underseat storage	-	■	-
Custom Leather-appointed 40/20/40 split-bench front seat with recliners, manual lumbar support, fold-down center armrest with storage and lockable underseat storage	-	□	-
Premium Cloth, reclining, six-way power-adjustable front bucket seats and manual lumbar support	-	□	-
Custom Leather-appointed reclining, six-way power-adjustable front bucket seats and manual lumbar support	-	□	-
Custom Leather-appointed, reclining, heated, 10-way power-adjustable, front bucket seats with memory and power lumbar support	-	-	■
Custom Leather-appointed with perforated inserts, reclining, heated and cooled, 10-way power adjustable, front bucket seats with memory and power lumbar support ²⁶	-	-	□
Rear seat: Flip-up, 60/40 split-bench	■	■	■
AUDIO SYSTEMS			
AM/FM stereo	■	-	-
AM/FM stereo with CD/MP3 player	□	■	-
AM/FM stereo with CD/MP3 player and USB port ³	-	□ ¹⁹	■

■ STANDARD □ AVAILABLE - NOT AVAILABLE

	WT	LT	LTZ ¹
AUDIO SYSTEMS (CONTINUED)			
AM/FM stereo with in-dash six-disc CD/MP3 changer and USB port ³	-	-	□
Bose® sound system	-	□ ²⁷	■
DVD entertainment system with rear-seat audio controls	-	-	□
NavTraffic ²⁸	-	-	□
Touch-screen navigation radio	-	-	□
SiriusXM Satellite Radio ²⁹	□ ¹⁷	-	-
SiriusXM Satellite Radio ³⁰ with three trial months	-	■	■
WHEELS			
17" steel (2500HD)	■	-	-
17" steel (3500HD DRW and Chassis Cab)	■	-	-
17" chrome-clad steel (2500HD)	□	-	-
17" machined-aluminum (2500HD)	-	■	-
17" polished forged-aluminum (3500HD DRW and Chassis Cab)	-	□	■
17" steel with chrome overlay (3500HD DRW and Chassis Cab)	-	■	-
18" steel (2500HD)	□	-	-
18" steel (3500HD SRW)	■	-	-
18" polished forged-aluminum (2500HD)	-	□	■
18" polished forged-aluminum (3500HD SRW)	-	■	■
20" polished forged-aluminum (2500HD)	-	□	□

DIMENSIONS



SPECIFICATIONS

PICKUP MODEL	SERIES	DRIVE	TRIM LEVELS	STANDARD ENGINE	HP @ RPM	TORQUE @ RPM	STANDARD TRANSMISSION	OPTIONAL ENGINES	HP @ RPM	TORQUE @ RPM
CREW CAB STANDARD BOX	2500HD (3/4-ton)	2WD/4x4	WT, LT, LTZ	Vortec 6.0L V8	360 @ 5400 ³²	380 @ 4200	Hydra-Matic 6-speed automatic overdrive	Duramax 6.6L Turbo-Diesel V8	397 @ 3000 ³³	765 @ 1600 ³³
	3500HD (1-ton)	2WD/4x4	WT, LT, LTZ	Vortec 6.0L V8	322 @ 4400	380 @ 4200	Hydra-Matic 6-speed automatic overdrive	Duramax 6.6L Turbo-Diesel V8	397 @ 3000 ³³	765 @ 1600 ³³
CREW CAB LONG BOX	2500HD (3/4-ton)	2WD/4x4	WT, LT, LTZ	Vortec 5.3L V8	360 @ 5400 ³²	380 @ 4200	Hydra-Matic 6-speed automatic overdrive	Duramax 6.6L Turbo-Diesel V8	397 @ 3000 ³³	765 @ 1600 ³³
	3500HD (1-ton)	2WD/4x4	WT, LT, LTZ	Vortec 6.0L V8	322 @ 4400	380 @ 4200	Hydra-Matic 6-speed automatic overdrive	Duramax 6.6L Turbo-Diesel V8	397 @ 3000 ³³	765 @ 1600 ³³
CREW CAB CHASSIS CAB	3500HD (1-ton)	2WD/4x4	WT, LT	Vortec 6.0L V8	322 @ 4400	380 @ 4200	Hydra-Matic 6-speed automatic overdrive	Duramax 6.6L Turbo-Diesel V8	335 @ 3100	685 @ 1600



IMPORTANT INFORMATION

100,000-MILE/5-YEAR TRANSFERABLE POWERTRAIN LIMITED WARRANTY. Every 2012 Chevy passenger car, light-duty truck, SUV and crossover comes with a 100,000-mile/5-year (whichever comes first) transferable Powertrain Limited Warranty. Plus, you get 100,000 miles/5 years (whichever comes first) of the 24/7 Roadside Assistance Program, the Courtesy Transportation Program, and much more. See dealer for details.

NEW VEHICLE LIMITED WARRANTY. GM vehicles registered in the U.S.A. are covered for 36,000 miles/3 years (whichever comes first). The complete vehicle is covered, including tires, towing to your nearest Chevrolet dealership and cosmetic corrosion resulting from defects. Repairs will be made to correct any vehicle defect, and most warranty repairs will be made at no charge. In addition, rust-through corrosion will be covered for 100,000 miles/6 years (whichever comes first). See dealer for details.

ENGINES. Chevrolet products are equipped with engines produced by GM Powertrain or other suppliers to GM worldwide. The engines in Chevrolet products may also be used in other GM makes and models.

ASSEMBLY. Chevrolet vehicles and their components are assembled or produced by different operating units of General Motors, its subsidiaries or suppliers to GM worldwide. We sometimes find it necessary to produce Chevrolet vehicles with different or differently sourced components than originally scheduled. Since some options may be unavailable when your vehicle is assembled, we suggest you verify that your vehicle includes the equipment you ordered and that, if there were changes, they are acceptable to you.

ONSTAR. OnStar services require vehicle electrical system (including battery), wireless service and GPS satellite signals to be available and operating for features to function properly. OnStar acts as a link to existing emergency service providers. Subscription Service Agreement required. Call 1-888-4ONSTAR (1-888-466-7827) or visit onstar.com for OnStar Terms and Conditions, Privacy Policy, details and system limitations.

A NOTE ON CHILD SAFETY. Always use safety belts and the correct restraint for your child's age and size. Even in vehicles equipped with the Passenger Sensing System, children are safer when properly secured in a rear seat in the appropriate infant, child or booster seat. Never place a rear-facing infant restraint in the front seat of any vehicle equipped with a passenger air bag. See the Owner's Manual and child safety seat instructions for more safety information.

IMPORTANT WORDS ABOUT THIS CATALOG. We have tried to make this catalog comprehensive and factual. We reserve the right, however, to make changes at any time, without notice, in prices, colors, materials, equipment, specifications, models and availability. Specifications, dimensions, measurements, ratings and other numbers in this catalog and other printed materials provided at the dealership or affixed to vehicles are approximations based upon design and engineering drawings, prototypes and laboratory tests. Your vehicle may differ due to variations in manufacture and equipment. Since some information may have been updated since the time of printing, please check with your Chevrolet dealer for complete details. Chevrolet reserves the right to lengthen or shorten the model year for any product for any reason or to start and end model years at different times. Certain vehicle features may lose their usefulness over time due to obsolescence from technological changes. Unless otherwise noted, all claims based on GM Large Pickup segment and latest available competitive information. Excludes other GM vehicles.

TRAILERING AND OFF-ROAD DRIVING INFORMATION. Please go to chevy.com and carefully review an Owner's Manual for important safety information about trailering or off-road driving in your vehicle.

FLEET ORDERS. Some standard content may be deleted on fleet orders. See dealer for details.

OWNER SERVICES. Chevrolet is committed to enhancing the ownership experience through a wide array of programs. For more information about 24-hour Roadside Assistance, Courtesy Transportation, Customer Assistance Center, Chevy Safety, marketing and incentives, visit chevy.com.

GMMOBILITY.COM (1-800-323-9935). GM MobilitySM offers financial assistance for eligible adaptive equipment to make automotive travel easier for persons with disabilities or special transportation needs. To learn more about special GM Mobility offers, visit gmmobility.com.

CHEVROLET OWNER CENTER (GMOWNERCENTER.COM/CHEVY). Register your vehicle with the Chevrolet Owner Center, and receive benefits such as online access to your vehicle Owner's Manual, maintenance schedule reminders, service history tracking, warranty and service information, safety information, special offers and privileges, and news and events.

GMCARDMEMBERSERVICES.COM. Did you know about the family of reward credit cards that can help you get a great deal on a new GM car, light-duty truck, SUV or crossover? With a GM reward card, you accrue earnings on every credit card purchase to use toward the purchase or lease of an eligible new GM vehicle. With three cards to choose from, you're sure to find one that suits you best.

GM, the GM Logo, Chevrolet, the Chevrolet Logo, and the slogans, emblems, vehicle model names, vehicle body designs and other marks appearing in this catalog are the trademarks and/or service marks of General Motors, its subsidiaries, affiliates or licensors. ©2011 OnStar. All rights reserved. SiriusXM and all related marks and logos are trademarks of SiriusXM Radio Inc. and its subsidiaries. The Bluetooth word mark is a registered trademark owned by Bluetooth SIG, Inc., and any use of such mark by Chevrolet is under license. ©2011 General Motors. All rights reserved. September 2011

OWNERSHIP EXTRAS



chevy.com/warranty



ACCESSORIES

chevy.com/accessories



onstar.com



siriusxm.com





Chevy Runs Deep