

# Santa Fe Sport

2018



# Memorable road trips, made comfortable and safe.



Get ready to take on your commute, early-morning hockey practice or that annual summer camping trip with the 2018 Santa Fe Sport. Beyond the dynamic styling, you will find versatile storage capability, advanced safety technologies, and an array of premium comfort features to exceed your every expectation.



## Efficiently powerful.

Whether you choose the standard 2.4L Gasoline Direct Injection (GDI) engine or opt for the available 240 horsepower 2.0L twin-scroll turbo-charged GDI engine, you'll be ready to take on your day in the Santa Fe Sport with power and confidence. The available active cornering control All-Wheel Drive system and 3,500 lbs of towing capacity provide even greater capability.

## Feature-rich cabin.

As the driver, get comfortable with standard heated front seats, an available heated steering wheel and 12-way power driver's seat with integrated memory system. You can also stay connected to your favourite apps with available Android Auto™<sup>o</sup> and Apple CarPlay™<sup>Δ</sup> smartphone connectivity. How about the rest of the crew? Everyone can appreciate the view offered by the available panoramic sunroof and added privacy thanks to the available rear window sunshade blinds.

Standard audio controls

Available Adaptive Cruise Control with stop-and-go capability



Standard Bluetooth® hands-free phone system

Available heated steering wheel



## Versatile space.

Rear seats recline for comfort, fold 40/20/40 delivering flexible storage, and are available with a second-row sliding feature — making it possible to bring a child seat closer to the front passenger. The smart design also provides an additional 51L of storage under the cargo floor, so you can store items out of sight. Plus, the available Smart Power Liftgate makes it that much more convenient to load and unload your cargo.



2.0T Ultimate model shown.



Available panoramic sunroof



Available Multi-view Camera System



Standard heated front seats, available ventilated front seats, available heated rear seats

## Added peace of mind.

Take on your adventures with added peace of mind. The 2018 Santa Fe Sport is equipped with a comprehensive package of top safety features — including an array of available situational awareness and driver assistance technologies — to help keep you safe on your journeys.



Available Blind Spot Detection with Lane Change Assist



Available Rear Cross-Traffic Alert



Available Lane Departure Warning System



Available Autonomous Emergency Braking with Pedestrian Detection



Available High Beam Assist



Available Adaptive Cruise Control with stop-and-go capability



Standard 5.0" touch-screen with rearview camera



Standard 7 airbags

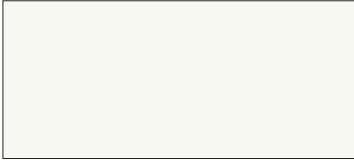


Learn more at [hyundaicanada.com/2018SantaFeSport](http://hyundaicanada.com/2018SantaFeSport)

# Colours and wheels

## Exterior Colours

Frost White Pearl



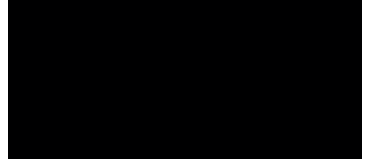
Sparkling Silver



Titanium Silver



Twilight Black



Platinum Graphite



Serrano Red



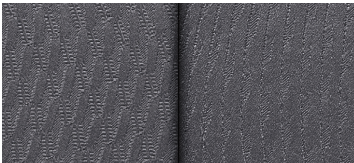
Nightfall Blue\*



\* Available on 2.4L Premium model and above

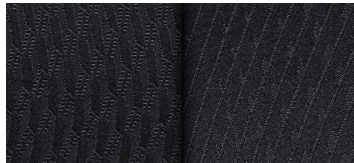
## Interior Colours

Grey cloth



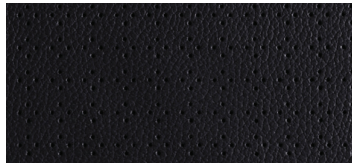
With YES Essentials®  
stain protectant  
Standard on 2.4L model

Black cloth



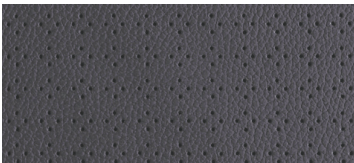
With YES Essentials®  
stain protectant  
Standard on  
2.4L Premium models

Black leather



Standard on 2.4L SE, 2.4L Luxury,  
2.0T SE, 2.0T Limited and 2.0T  
Ultimate models

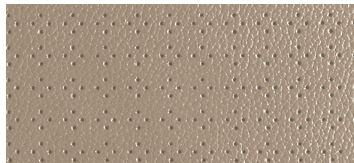
Grey leather



Available on 2.4L Luxury,  
2.0T Limited and 2.0T Ultimate  
models

(Twilight Black and Titanium Silver  
exterior colours only)

Beige leather



Available on 2.4L Luxury,  
2.0T Limited and 2.0T Ultimate  
models

(Frost White Pearl, Twilight Black and  
Serrano Red exterior colours only)

## Wheels



Standard 17" alloy wheel



Available 19" alloy wheel  
with silver finish



Available 19" alloy wheel  
with dark graphite finish

Choice of interior colour depends upon model and/or exterior colour selection. Colours shown are for reference only and may vary from the actual hue and appearance. Visit [hyundaicanada.com](http://hyundaicanada.com), or see your dealer for details.

# Specifications

- Standard
- Not Available
- Optional

	2.4L	2.4L Premium	2.4L SE	2.4L Luxury	2.0T SE	2.0T Limited	2.0T Ultimate
<b>Performance</b>							
<b>Engine and transmission</b>							
2.4L GDI 4-cylinder engine (185 horsepower / 178 lb-ft torque)	•	•	•	•	-	-	-
2.0L Turbo-GDI 4-cylinder engine (240 horsepower / 260 lb-ft torque)	-	-	-	-	•	•	•
6-speed automatic with SHIFTRONIC® manual shift mode	•	•	•	•	•	•	•
<b>Drive configuration</b>							
Front Wheel Drive (FWD)	•	•	-	-	-	-	-
All-Wheel Drive (AWD)	◦	◦	•	•	•	•	•
<b>Towing capacity</b>							
Maximum towing capacity, with trailer brake			2,800 lbs		3,500 lbs		
Maximum towing capacity, without trailer brake			1,600 lbs				
<b>Exterior</b>							
<b>Wheels</b>							
Temporary spare tire	•	•	•	•	•	•	•
17 x 7.0J alloy wheels	•	•	•	•	-	-	-
19 x 7.5J alloy wheels — silver finish	-	-	-	-	•	•	•
19 x 7.5J alloy wheels — dark graphite finish	-	-	-	-	-	-	•
<b>Exterior lighting</b>							
Automatic headlights	•	•	•	•	•	•	•
Front fog lights	•	•	•	•	•	•	•
LED Daytime Running Lights	•	•	•	•	•	•	•
Projection headlights with LED accents	•	•	•	•	•	•	•
HID headlights	-	-	-	-	-	•	-
LED tail lights	-	-	-	-	-	•	•
HID headlights with Adaptive Cornering System	-	-	-	-	-	-	•
High Beam Assist	-	-	-	-	-	-	•
<b>Outside mirrors</b>							
Power activation, body colour, heated with timer	•	•	•	•	•	•	•
LED side mirror turn signal repeaters	-	•	•	•	•	•	•
<b>Moldings and trim</b>							
Chrome door handles	•	•	•	•	•	•	•
Exterior side door garnish	-	-	-	-	•	•	•
<b>Glass</b>							
Rear window privacy glass	•	•	•	•	•	•	•
Solar control tinted glass	•	•	•	•	•	•	•
Panoramic sunroof	-	-	•	•	•	•	•
<b>Wipers</b>							
Windshield wiper de-icer	-	•	•	•	•	•	•
<b>Interior</b>							
<b>Seating</b>							
5-passenger capacity	•	•	•	•	•	•	•
Heated front seats	•	•	•	•	•	•	•
Cloth seating surfaces	•	•	-	-	-	-	-
12-way power-adjustable driver's seat	-	•	•	•	•	•	•
Rear heated seats	-	•	•	•	•	•	•
Leather seating surfaces	-	-	•	•	•	•	•
4-way power-adjustable passenger seat	-	-	-	•	-	•	•
Driver's Integrated Memory System for seat and side mirror positions	-	-	-	•	-	•	•
Rear sliding seats	-	-	-	•	-	•	•
Ventilated front seats	-	-	-	-	-	•	•
<b>Multimedia</b>							
Bluetooth® hands-free phone system	•	•	•	•	•	•	•
Rearview camera	•	•	•	•	•	•	•
AM/FM/CD/MP3 audio system with 5.0" LCD touch-screen display	•	•	•	-	•	-	-
SiriusXM™	-	•	•	•	•	•	•
Infinity® audio system with 12 speakers	-	-	-	•	-	•	•
8.0" high-resolution touch-screen navigation system	-	-	-	•	-	•	•
Android Auto™ <sup>o</sup> or Apple CarPlay™ <sup>Δ</sup>	-	-	-	•	-	•	•

# Specifications

- Standard
- Not Available
- Optional

	2.4L	2.4L Premium	2.4L SE	2.4L Luxury	2.0T SE	2.0T Limited	2.0T Ultimate
<b>Interior</b>							
<b>Interior trim</b>							
Sunvisor with illuminated vanity mirrors and visor extension	•	•	•	•	•	•	•
<b>HVAC</b>							
Rear seat HVAC ducts (mounted in B-pillar)	•	•	•	•	•	•	•
Rear window defroster with timer	•	•	•	•	•	•	•
Manual climate control with auto-defogging system	•	-	-	-	-	-	-
Dual-zone automatic climate control with CleanAir Ionizer	-	•	•	•	•	•	•
<b>Steering wheel</b>							
Audio (volume, mode, seek), cruise and Bluetooth® hands-free telephone controls	•	•	•	•	•	•	•
Manual tilt and telescopic steering column adjustment	•	•	•	•	•	•	•
Heated steering wheel	-	•	•	•	•	•	•
Leather-wrapped steering wheel	-	•	•	•	•	•	•
<b>Convenience</b>							
Cargo area under floor storage	•	•	•	•	•	•	•
Power windows with driver's auto up/down and pinch protection	•	•	•	•	•	•	•
Remote keyless entry system with security alarm	•	•	•	•	•	•	•
Cruise control	•	•	•	•	•	•	-
Manual rear side window sunshades	-	•	•	•	•	•	•
Front passenger's window auto up/down and pinch protection	-	•	•	•	•	•	•
Proximity keyless entry with push-button ignition	-	-	-	•	•	•	•
Electrochromic auto-dimming rearview mirror with integrated HomeLink® transceiver and compass	-	-	-	•	-	•	•
Smart Power Liftgate	-	-	-	•	-	•	•
Adaptive Cruise Control with stop-and-go capability	-	-	-	-	-	-	•
<b>Volume (Litres)</b>							
Interior volume	4,061 L						
Cargo behind front seats	2,025 L						
Cargo behind second row seats	1,003 L						
<b>Safety</b>							
7 airbags — driver knee (1), front impact (2), front seat mounted side impact (2), front-rear side curtain (2)	•	•	•	•	•	•	•
Electronic Stability Control with Traction Control System	•	•	•	•	•	•	•
Anti-lock Braking System with Electronic Brake-force Distribution and Brake Assist	•	•	•	•	•	•	•
Vehicle Stability Management	•	•	•	•	•	•	•
Blind Spot Detection with Lane Change Assist	-	•	•	•	•	•	•
Rear Cross-Traffic Alert	-	•	•	•	•	•	•
Rear Parking Assistance Sensors	-	•	•	•	•	•	•
Autonomous Emergency Braking with Pedestrian Detection	-	-	-	-	-	-	•
Lane Departure Warning System	-	-	-	-	-	-	•
Multi-View Camera System	-	-	-	-	-	-	•
<b>Fuel Economy</b>							
<b>(Litres/100km)^</b>							
2.4L FWD City / Highway / Combined	11.1 / 8.6 / 10.0						
2.4L AWD City / Highway / Combined	12.0 / 9.1 / 10.7						
2.0T AWD City / Highway / Combined	12.5 / 9.6 / 11.2						
Fuel Tank	66 L						



# Seating configurations

5-passenger seating



# Dimensions

Overall width  
(excluding mirrors)



1,880 mm

Overall length



4,700 mm

Overall height



1,690 mm

# Accessories



## Trailer hitch kit

Designed to meet your towing needs, a Hyundai hitch can accommodate a wide variety of hitch-mounted accessories. Kit includes: trailer hitch, ball mount and end cap (chrome ball shown not included).



## Premium all-weather floor liners

Premium all-weather floor liners were designed to cover the interior carpet, providing maximum protection against the elements that other mats cannot offer. Their unique and durable design features a non-slip surface for added comfort and a long-lasting premium look. Remove carpet mats prior to installation.



## Side steps — oval tubes

These oval side steps were designed to complement the design nature of your Hyundai. They are as attractive as they are functional. Finished in stainless steel, these oval side steps include step pads for secure footing and will look good for years to come.



## Cross rails

This durable, quick-locking cross rail system lets you transport cargo easily, without sacrificing interior room.

For more information on additional accessories please visit [hyundaicanada.com](http://hyundaicanada.com), or your dealer for details.

## Our SUV family

The choice is all yours. The Tucson, Santa Fe Sport and Santa Fe XL all offer unique attributes and impressive capabilities that more than measure up to the most stringent of demands. Whether you need seating for up to seven or versatile storage space, each is designed to help make your daily commute enjoyable, safe and inspire adventure with our available advanced All-Wheel Drive system.



# 5

YEAR/100,000 KM  
Comprehensive Limited Warranty<sup>†</sup>

YEAR/100,000 KM  
Powertrain Warranty

YEAR/100,000 KM  
Emission Warranty

YEAR/UNLIMITED KM  
Roadside Assistance Program<sup>††</sup>

## One of the best-backed warranties in Canada.

You will see that a number of our vehicles have received multiple awards from the most reputable third-party organizations, so you can take their word when it comes to the quality, design and safety of our vehicles. This quality is equally matched by the quality of our warranty. We stand confidently behind our products to give you ultimate peace of mind with a 5-year/100,000 km Comprehensive Limited Warranty<sup>†</sup>. We also provide a 5-year/Unlimited km Roadside Assistance Program<sup>††</sup> featuring flat tire changing, lockout service and more. Just one toll-free call away, 24 hours a day.

<sup>™/®</sup>The Hyundai name, logos, product names, feature names, images and slogans are trademarks owned or licensed by Hyundai Auto Canada Corp.. Specifications, features, illustrations, accessories, materials and equipment and all other information shown in this brochure are based on the latest information available at the time of publication. Although descriptions are believed to be correct, accuracy cannot be guaranteed. Hyundai Auto Canada Corp. reserves the right to make any changes or modifications at any time, without notice or obligation, including, without limitation, in colour, specifications, features, accessories, materials, equipment and models. Some vehicles are shown with optional equipment. All Hyundai warranties have no deductible. <sup>†</sup>Hyundai's Comprehensive Limited Warranty coverage covers most vehicle components against defects in workmanship under normal use and maintenance conditions. <sup>††</sup>Hyundai's 24-Hour Roadside Assistance Program is a limited service and does not cover certain costs or expenses. Roadside Assistance is not a warranty. <sup>‡</sup>Android Auto<sup>™</sup> is compatible with Android phones running Android Lollipop or newer. Android Auto may not be available on all devices and is not available in all countries or regions. Additional apps may be required. Subject to app compatibility. Visit [www.android.com](http://www.android.com) for further details and any applicable limitations. Android and Android Auto<sup>™</sup> are trademarks of Google Inc.. <sup>‡</sup>Apple CarPlay<sup>™</sup> works with iPhone 5s, iPhone 5c, iPhone 5 and later models running the latest version of iOS 7 and above. CarPlay<sup>™</sup> may not be available on all devices and may not be available in all countries or regions. Subject to app compatibility. Visit [www.apple.com](http://www.apple.com) for further details and any applicable limitations. Apple, Apple CarPlay and iPod are trademarks of Apple Inc.. The SiriusXM<sup>™</sup> name is a trademark of SiriusXM Satellite Radio Inc.. Bluetooth<sup>®</sup> word mark and logos are registered trademarks owned by Bluetooth SIG, Inc.. HomeLink<sup>®</sup> is a registered trademark of Johnson Controls Inc.. YES Essentials<sup>®</sup> is a registered trademark of Sage Automotive Interiors. Infinity<sup>®</sup> is a registered trademark of Harman International, Inc.. All other trademarks and trade names are those of their respective owners.

Hyundai Auto Canada Corp.  
[hyundaicanada.com](http://hyundaicanada.com)

