

2022

# ELANTRA



  
DEALER ePROCESS

# Forward-thinking design. Next-level technology.



ELANTRA N Line in Electric Shadow



Looking sharp and sporting features like big, bold digital displays and an impressive array of sophisticated safety features, it's easy to see why the Hyundai Elantra was chosen 2021 North American Car of the Year.<sup>™</sup> And while Elantra might seem like an easy choice to make, deciding *which* Elantra is more challenging.

For 2022, there's an Elantra with a Smartstream 2.0L engine, which strikes the perfect balance between stirring performance and fuel-sipping efficiency. Then there's the Elantra N Line. Its sportier look is coupled with a 1.6L turbocharged engine that presses you back in your seat.

For a different kind of performance, we offer the Elantra Hybrid. A direct result of Hyundai's industry-leading research into alternative

fuel technologies, it delivers a whopping 54 combined MPG with ultra-low emissions.<sup>1</sup>

No matter which model you choose, Elantra's futuristic design will attract eyeballs. With cut-diamond shapes, a wide cascading grille, stylish lighting and a lowered coupe-like profile, it's a stunning design that draws the right kind of attention – and international recognition by winning the prestigious 2020 GOOD DESIGN award.<sup>2</sup>

Elantra's modern interior is centered around an available 10.25" touchscreen – the largest in its class.<sup>3</sup> It's big on space, too, with class-leading rear-seat legroom and total interior volume<sup>3</sup> that makes it easy to share all of Elantra's advanced features and technology with your friends and family.



2021 Hyundai Elantra is a Kelley Blue Book KBB.com Best Buy<sup>4</sup>



Hyundai Elantra  
2021 North American Car of the Year



Hyundai Elantra received a 2021 5-Year Cost to Own Award from Kelley Blue Book's KBB.com<sup>5</sup>

<sup>1</sup>Elantra Hybrid Blue EPA estimates for comparison only. Mileage may vary. Your actual mileage will vary with options, driving conditions, driving habits and the vehicle's condition. <sup>2</sup>GOOD DESIGN® is a trademark of the Chicago Athenaeum. Copyright Metropolitan Arts Press Ltd. 1992-2021. <sup>3</sup>Claim based on comparison of specifications on manufacturer websites. <sup>4</sup>For more information, visit Kelley Blue Book's KBB.com. Kelley Blue Book is a registered trademark of Kelley Blue Book Co., Inc. <sup>5</sup>2021 model-year vehicle's projected cost to own for the initial five-year ownership period is based on the average Kelley Blue Book 5-Year Cost to Own data which considers depreciation and costs such as fuel and insurance. For more information, visit [www.kbb.com](http://www.kbb.com).



<sup>1</sup>Claim based on comparison of specifications on manufacturer websites. <sup>2</sup>Elantra Hybrid Limited model only.

ELANTRA Hybrid Limited in Intense Blue

## Exercise your power however you prefer.

The 2022 Hyundai Elantra is the culmination of decades spent searching for higher levels of performance, which led our engineers in several directions. Like pairing a spirited Smartstream 2.0L Atkinson Cycle engine with a Smartstream Intelligent Variable Transmission. Turn the steering wheel or touch the brakes, and it's clear Elantra can handle itself in a corner and make you feel connected to the road.

Elantra N Line's power comes in the form of a turbocharged 201-hp engine. Controlling all of that torque is your choice of a 6-speed manual or available 7-speed Dual Clutch Transmission with paddle shifters. With each gear shift, you'll hear the crisp notes coming from a dual chrome-tipped exhaust outlet. With each turn of the wheel, you'll feel the firm grip of performance tires on 18" alloy wheels.

Elantra Hybrid offers an advanced hybrid powertrain with segment-leading fuel economy that's more efficient than Toyota Corolla Hybrid.<sup>1</sup> All from a 1.6L GDI engine and 32 kW electric motor that combine for 139 HP and 195 lb-ft of torque. Both Elantra N Line and Hybrid feature a multi-link rear suspension for confident cornering. And both come equipped with unique braking systems that offer enhanced performance compared to standard Elantra models. So whether you press the pedal on the right, or the pedal on the left, the power is unmistakable.



ELANTRA N Line in Electric Shadow



N Line: Dual chrome-tipped exhaust outlet



Hybrid: 10.25" digital LCD instrument cluster<sup>2</sup>



ELANTRA N Line in Black Leather + Cloth with Red Stitching





## So advanced, it's practically future-proof.

Elantra was designed around you. A low and wide cockpit design seamlessly connects the door to the high center console, wrapping around the driver to convey a sporty sense – one that's punctuated by Elantra's unique cornering grip bar.

Seated in Elantra N Line? Its sporty surroundings are amplified by the unique N Line analog gauge cluster, sport steering wheel and sport seats with red contrast stitching. Seated in the Elantra Hybrid Limited? Your front seats are ventilated to help keep you cool. A segment-first 10.25" digital instrument cluster and the largest navigation screen in the compact car class are available under a single cover of glass, providing all the information you need at a glance.<sup>1</sup>

Customizable features let you connect with your car in deeply satisfying ways. Elantra's available ambient lighting can be changed to any of 64 colors. And Hyundai's BlueLink<sup>®</sup> app lets you pre-heat or pre-cool a cabin<sup>2</sup> that features best-in-class interior volume.<sup>1</sup> Even the cupholders adjust to fit the depth of your drink's container.

Another breakthrough convenience, Dynamic Voice Recognition, lets you activate Elantra Limited's climate controls, select SiriusXM channels and more using conversational voice commands. You can even ask questions like "How's the stock market today?" or "What time does the playoff game start?"<sup>3</sup>

SiriusXM  
Satellite Radio

Android Auto™  
Apple CarPlay®

8  
Speakers



**BOSE**  
Better sound through research.

HD Radio™  
Technology

Dynamic Voice  
Recognition



Hyundai's class-exclusive Digital Key<sup>1</sup> unlocks Elantra's front doors and starts the engine using your compatible Android™ smartphone.<sup>4</sup> Multiple drivers can be assigned a digital key that instantly retrieves their personalized radio preferences, driver seat/side mirror presets, and more.<sup>5</sup>



10.25" widescreen navigation display



Dual automatic temperature controls



Power tilt-and-slide sunroof



Hands-free smart trunk release

<sup>1</sup>Claim based on comparison of specifications on manufacturer websites. <sup>2</sup>Requires active BlueLink subscription with Remote package. Not available on Elantra SE. <sup>3</sup>Dynamic Voice Recognition varies by unit. Speak in a normal voice and minimize background noise for best results. Internet searches require BlueLink Guidance package subscription. See Owner's Manual for further details and limitations. <sup>4</sup>The available Hyundai Near Field Communication Digital Key requires a compatible Android smartphone and appropriately equipped 2022 Hyundai Elantra. Not all Android devices are compatible. Elantra vehicle must be equipped with a smart key with push button start, wireless device charging and Audio Video Navigation System 5.0 (or newer) or Display Audio 2.0. Lock and unlock functionality work on the front doors only. See your Owner's Manual for further details and limitations. <sup>5</sup>Requires active BlueLink subscription with Remote package. Not available on Elantra SE.

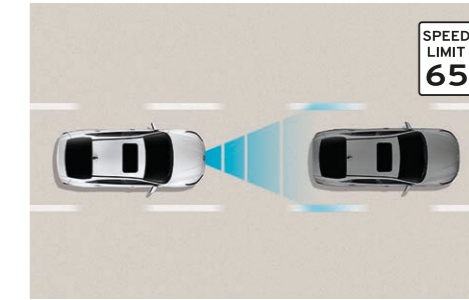
# Safety engineered with all-around smarts.

You don't have to be wealthy to drive a vehicle loaded with state-of-the-science safety innovations. You just have to be smart. Elantras come standard with an array of Hyundai SmartSense technologies designed to help protect you wherever you drive.<sup>1</sup> Even after you've exited your car, features like Rear Occupant Alert help ensure your family's safety.<sup>2</sup>

Beneath its skin, Elantra's body is infused with advanced high-strength steel and bonded by aircraft-quality adhesives. It's a solid foundation for optimizing both driving dynamics and protection in the event of an accident. No wonder Elantra models equipped with LED headlights have earned an IIHS Top Safety Pick for the last 10 consecutive years.<sup>3</sup>

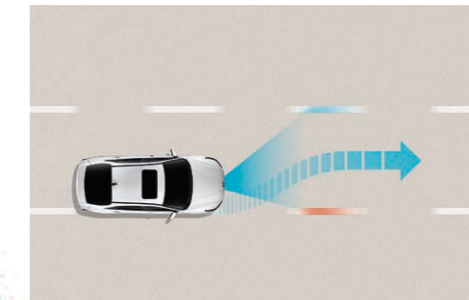


**2021 Hyundai Elantra**  
when equipped with LED headlights



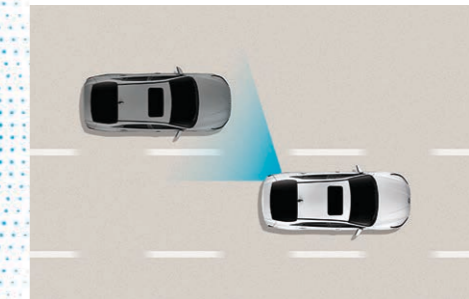
## Highway Driving Assist

Acting as your copilot on highways, this feature helps keep you centered in your lane while also maintaining a set speed and distance from the vehicle in front. It uses Elantra's navigation map data to automatically adjust for changing speed limits and reduces your speed when it detects you're approaching a curve in the road.<sup>7</sup>



## Lane Following Assist

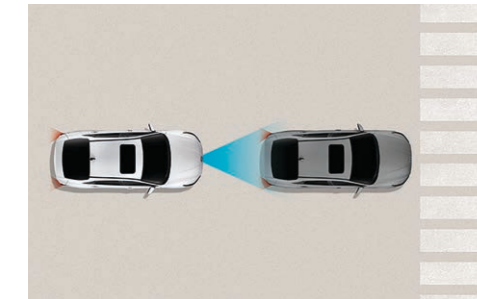
Using the front-facing camera to detect lane markers on the road, this feature assists the Elantra driver's steering to help keep the vehicle centered in its lane. Even when lane markings aren't visible, your Hyundai can determine a virtual path based on movements of the preceding vehicle.<sup>8</sup>



## Blind-Spot Collision-Avoidance Assist

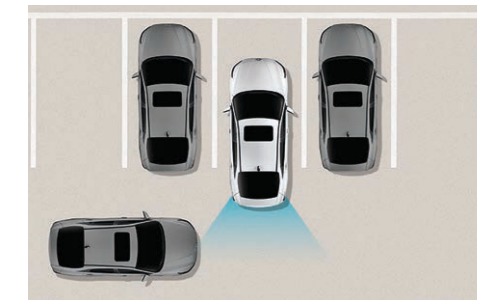
If your Elantra detects a vehicle in your blind spot while your turn signal is on, it alerts the driver and automatically applies light braking before you change lanes to help avoid a collision. It can also detect vehicles as far as two lanes over to help prevent collisions when exiting from a parallel parking spot.<sup>9</sup>

## << SmartSense Around Town



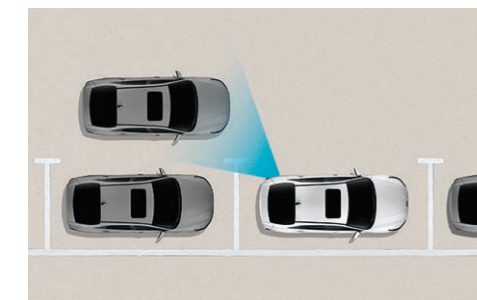
## Forward Collision-Avoidance Assist

When the front-facing camera or available radar detects a vehicle or pedestrian in your path, or oncoming cars when turning left in an intersection, your Elantra warns you of a potential collision. If necessary, the system will automatically apply emergency braking to help avoid a collision.<sup>4</sup>



## Rear Cross-Traffic Collision-Avoidance Assist

Backing out of a parking space and wondering whether there's cross traffic coming your way? This feature warns you if another vehicle is detected to be approaching from the side. If necessary, your Elantra automatically applies braking to help prevent a collision.<sup>5</sup>



## Safe Exit Warning

After parking your Elantra, Safe Exit Warning issues an alert when a vehicle is detected to be approaching from behind, letting the driver know it may not be safe for passengers to open the street-side door.<sup>6</sup>



<sup>1</sup> Safety features vary by model. For details, refer to the Features chart in the back of this brochure or visit HyundaiUSA.com. <sup>2</sup> When the vehicle is parked and the engine has been turned off, Rear Occupant Alert can help to alert the driver if the rear door(s) have been opened at any point after the vehicle was unlocked at the beginning of the journey. Upon turning the engine off, Rear Occupant Alert will provide a visual alert on the instrument cluster. Rear Occupant Alert is not a substitute for driver attentiveness. Never leave a child unattended in a vehicle. See Owner's Manual for further details and limitations. <sup>3</sup> To qualify for 2021 TOP SAFETY PICK, a vehicle must earn good ratings in the driver-side and passenger-side small overlap front, moderate overlap front, side, roof strength and head restraint tests. It also must earn an advanced or superior rating for vehicle-to-vehicle and vehicle-to-pedestrian front crash prevention and an acceptable or good headlight rating. For details visit www.iihs.org. <sup>4</sup> Forward Collision-Avoidance Assist with Pedestrian Detection is intended to be a supplement to safe driving practices. The system is not designed to detect certain stationary objects such as trees or poles, and may not detect all vehicles or pedestrians under certain conditions. The system is a driver assistance system and is not a substitute for safe driving. The driver is responsible for being attentive and maintaining control of the vehicle, and should not wait for the system's alerts before braking as there may not be sufficient time to brake safely.

See Owner's Manual for further details and limitations. <sup>5</sup> Rear Cross-Traffic Collision-Avoidance Assist (RCCA) is designed to notify drivers of approaching cross traffic behind their vehicle. When another vehicle is detected while you are backing out of a parking spot, it provides audible and visual display warnings and applies braking if it senses a collision is imminent. RCCA is active when the vehicle is in reverse gear and backing at a speed less than 6 mph. It only engages during the first activation of reverse gear from park and may not detect all vehicles, depending on the size, angle, distance and speed of the other vehicle. Never rely exclusively on RCCA. Always look over your shoulder and use your mirrors to confirm rear clearance. There are limitations to the function, detection, range and clarity of the system. See Owner's Manual for further details and limitations. <sup>6</sup> When your vehicle is parked, Safe Exit Warning (SEW) can alert occupants planning to exit when another vehicle is approaching from behind. SEW does not work in all situations and is not a substitute for driver or passenger attentiveness. Always be aware of your surroundings and attentive of approaching vehicles. See Owner's Manual for further details and limitations. <sup>7</sup> Highway Driving Assist (HDA) is for highway use only and can help maintain your distance from the vehicle ahead while helping to keep your vehicle centered in its lane when lane markings are clearly visible on the road. HDA should not be used in poor weather, heavy or varying traffic, or on winding or slippery roads. HDA will not work under all circumstances and will not prevent loss of control. Driver remains responsible to slow or stop the vehicle to avoid a collision. See Owner's Manual for further details and limitations. <sup>8</sup> Lane Following Assist (LFA), when actively engaged with Smart Cruise Control or Highway Driving Assist, helps keep your vehicle centered in its lane when the lane markings are clearly visible on the road. Lane Following Assist will not work under all circumstances and will not prevent loss of control. Lane Following Assist is a supplemental assist, and does not replace the need for extreme care and attention by the driver. See Owner's Manual for further details and limitations. <sup>9</sup> Blind-Spot Collision-Avoidance Assist (BCA) helps warn of other cars in the blind spot region and can apply braking to help prevent an unsafe lane change. It also helps prevent collisions when exiting parallel parking spots by alerting the driver to a potential hazard. Never rely exclusively on BCA, as it is not a substitute for attentive driving. Always look over your shoulder and use your mirrors to confirm clearance. There are limitations to the function, detection, range and clarity of the system. BCA may not function correctly if one or more of the parking sensors is damaged, dirty or covered, or if weather conditions (heavy rain, snow or fog) are interfering with sensor operation. See Owner's Manual for further details and limitations.





## Upgrade your mobile device. With Hyundai Bluelink.

The new Elantra might just be the ultimate way to upgrade your mobile device. Thanks to our award-winning Bluelink®, Elantra is available with a comprehensive suite of safety, convenience and remote features that let you interact with your car – and the rest of your digital life – in powerful, practical ways.<sup>1</sup>

If you're like most Hyundai owners, the Bluelink features you'll use the most are its remote capabilities. With the MyHyundai app, you can start your car's engine, adjust the climate controls – even activate the available heated front seats – from your office or kitchen using your smartphone or smartwatch,<sup>2</sup> or your Amazon Echo®/Google Home™ virtual assistant.<sup>3</sup>

Starting your Elantra remotely, or with the Hyundai Digital Key, also tunes radio presets and restores seating/mirror preferences ahead of time using your Bluelink personal profile. Want to remotely check if you've left your doors unlocked or the lights on? Just consult your MyHyundai app for the answers.<sup>2</sup>

Elantra's standard Apple CarPlay® and Android Auto™ are available with the segment's first wireless connection.<sup>4</sup> Elantra's Bluetooth® music streaming has also been enhanced – you can now connect two phones to the audio system simultaneously. And to keep everyone powered up, Elantra offers an available wireless charging pad<sup>5</sup> and dual USB charge outlets.



### Automatic Emergency Assistance

Bluelink Connected Care offers 24/7 SOS Emergency Assistance as well as Automatic Collision Notification that calls for help if you're in an accident where airbags deploy.<sup>6</sup>



### On-Demand Diagnostics

Run vehicle diagnostics from your MyHyundai mobile app, report issues at the press of a button and receive maintenance reminders or Monthly Vehicle Health Reports by email.



### Destination Send-to-Car

Use your smartphone to find restaurants or points of interest, then send the destination to your Elantra's available navigation system for driving directions before you slip behind the wheel.<sup>7</sup>



### Hyundai Car Finder

Our Car Finder smartphone app feature helps you find your way back to your Elantra after a day of downtown shopping or an evening spent rooting for your favorite team.



### Remote Vehicle Controls

Use your smartphone, your home assistant or your wearable device to remotely start your Elantra's engine, unlock the car doors, set the car's cabin temperature, and more.



### Remote Vehicle Status

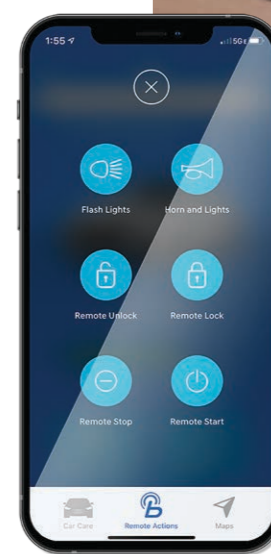
Wondering how much fuel is in your car's tank? If your Elantra's trunk is closed or the doors are unlocked? Your MyHyundai app knows the answers to these questions and more.



Apple CarPlay



Wireless device charging



Amazon Echo integration

**Bluelink**

**DEALER ePROCESS**

<sup>1</sup>The 2022 Hyundai Elantra includes 3 years of the Bluelink Connected Care, Remote and Guidance (factory-equipped navigation required) packages. All trials require an active Bluelink subscription agreement subject to the Connected Services Terms and Conditions. Three-year term starts from the new vehicle date-of-first-use, is available for new vehicle purchases and leases, and is transferable to subsequent owners subject to the Terms and Conditions. Only use Bluelink and corresponding devices when safe to do so. Cellular and GPS coverage is required. Features, specifications and fees are subject to change. For more on details and limitations, visit HyundaiUSA.com or your authorized Hyundai dealer. <sup>2</sup> Requires active Bluelink subscription with Remote package. <sup>3</sup> Amazon, Alexa and all related logos and motion marks are trademarks of Amazon.com, Inc. or its affiliates. Google Assistant and Google Home are trademarks of Google LLC. <sup>4</sup> Claim based on comparison of specifications on manufacturer websites. Apple CarPlay® is a registered trademark of Apple Inc. Android Auto™ is compatible with Android™ phones running Android 5.0 or higher. Android Auto may not be available on all devices and is not available in all countries or regions. Additional apps may be required. Android and Android Auto are trademarks of Google LLC. <sup>5</sup> Qi wireless charging function is based on smartphone compatibility and/or specific accessory cases. <sup>6</sup> Bluelink agents will contact existing emergency service responders. <sup>7</sup> Requires active Bluelink subscription with Guidance package and vehicle equipped with navigation system.

## ELANTRA SE

Smartstream 2.0L MPI 4-Cylinder Engine

**hp** 147  
**lb-ft** 132



### Popular Features

- Forward Collision-Avoidance Assist with Pedestrian Detection
- Lane Keeping Assist and Lane Following Assist
- Blind-Spot Collision-Avoidance Assist
- Rear Cross-Traffic Collision-Avoidance Assist
- Wireless Apple CarPlay®/Android Auto™
- Dual USB ports (1 charge+data, 1 charge)

## ELANTRA N Line

1.6L Turbo GDI 4-Cylinder Engine

**hp** 201  
**lb-ft** 195



### Popular Features

- Hyundai Digital Key
- Chrome-tipped dual exhaust outlet
- N Line unique front and rear fascia
- N Line unique front sport seats
- Wireless device charging
- Larger 12" front brake rotors and multi-link rear suspension

## Wheels



SE 15" Alloy Wheel



SEL and Blue 16" Alloy Wheel



N Line 18" Alloy Wheel



SEL Premium Package and Limited 17" Alloy Wheel

## ELANTRA SEL

Smartstream 2.0L MPI 4-Cylinder Engine

**hp** 147  
**lb-ft** 132



### Popular Features

- Proximity Key entry with push button start
- Dual automatic temperature control
- SiriusXM Satellite Radio
- 6-speaker audio system
- Hands-free smart trunk release
- Bluelink® Connected Car System (3 years complimentary)

## ELANTRA Limited

Smartstream 2.0L MPI 4-Cylinder Engine

**hp** 147  
**lb-ft** 132



### Popular Features

- High/low-beam LED headlights
- Leather-trimmed seating surfaces
- Highway Driving Assist
- Parking Collision-Avoidance Assist – Reverse
- Parking Distance Warning – Reverse
- Dynamic Voice Recognition

### SEL Convenience Package

Forward Collision-Avoidance Assist with Pedestrian, Cyclist and Junction-Turning Detection

10.25" digital instrument cluster display

Smart Cruise Control with Stop & Go

Heated front seats and side mirrors

Leather-wrapped steering wheel and shift knob

Wireless device charging

Electronic Parking Brake

### SEL Premium Package [requires SEL Convenience Package]

Bose® 8-speaker premium audio system

Power tilt-and-slide sunroof

Power driver seat with adjustable lumbar support

60/40 split-folding rear seats with armrest and cupholders

LED/bulb combination taillights

Hyundai Digital Key

Dark chrome exterior accents

Side mirrors with turn signal indicators

17" alloy wheels

## ELANTRA

EPA MPG Estimates (City/Highway/Combined)<sup>1</sup>

33/43/37 MPG | SE Smartstream IVT

31/41/35 MPG | SEL/Limited Smartstream IVT

28/36/31 MPG | N Line 7-speed automatic DCT

25/34/28 MPG | N Line 6-speed manual transmission

### Exterior & Interior Dimensions

	ELANTRA
Wheelbase	107.1 in
Overall Length	184.1 in
Overall Width	71.9 in
Overall Height – Elantra / N Line / Hybrid	55.7 / 55.9 / 55.7 in
Headroom – front (with sunroof) / rear	40.6 (38.7) / 37.3 in
Legroom – front / rear	42.3 / 38.0 in
Total Interior Volume	113.6 cu ft
Cargo (Trunk) Volume	14.2 cu ft

## ELANTRA Hybrid Blue

Smartstream 1.6L GDI 4-Cylinder Hybrid Engine

**net hp** 139  
**net lb-ft** 195



### Popular Features

54 Combined MPG

Lane Keeping Assist and Lane Following Assist

SiriusXM Satellite Radio and 6-speaker audio system

Dual automatic temperature control

Heated front seats and side mirrors

Blind-Spot Collision-Avoidance Assist

## ELANTRA Hybrid Limited

Smartstream 1.6L GDI 4-Cylinder Hybrid Engine

**net hp** 139  
**net lb-ft** 195



### Popular Features

Leather-trimmed seating surfaces and ventilated front seats

Integrated Memory System for driver seat

10.25" touchscreen navigation system

Parking Collision-Avoidance Assist – Reverse

Parking Distance Warning – Reverse

Full LED taillights

### ELANTRA Hybrid

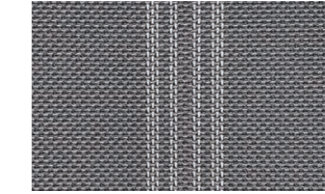
EPA MPG Estimates (City/Highway/Combined)<sup>1</sup>

53/56/54 MPG | Blue 6-speed automatic DCT

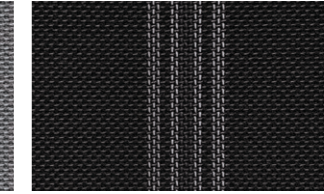
49/52/50 MPG | Limited 6-speed automatic DCT

<sup>1</sup>EPA estimates for comparison only. Mileage may vary. Your actual mileage will vary with options, driving conditions, driving habits and the vehicle's condition.

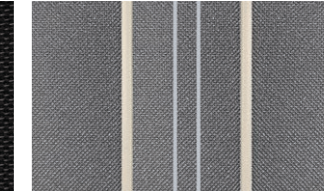
## Interior Colors



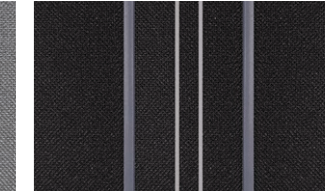
SE Gray Cloth



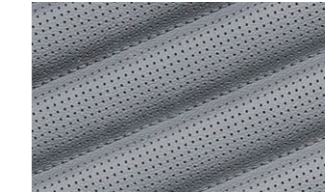
SE Black Cloth



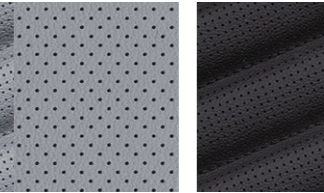
SEL/Hybrid Blue Gray Tricot Cloth



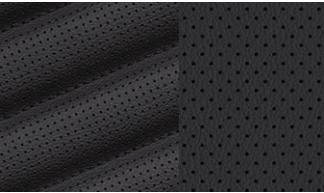
SEL/Hybrid Blue Black Tricot Cloth



Limited Melange with Gray Leather-Trimmed Seating

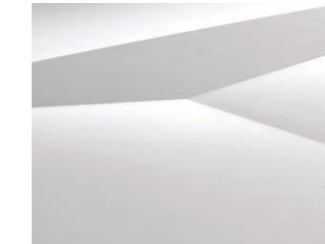


Limited Melange with Black Leather-Trimmed Seating

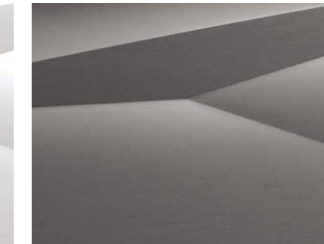


N Line Black Leather+Cloth/Red Stitching

## Exterior Colors



Quartz White/Ceramic White



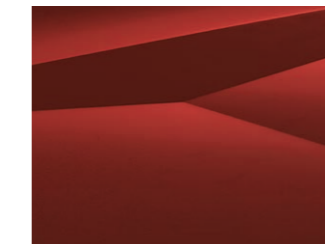
Shimmering Silver/Fluid Metal



Electric Shadow



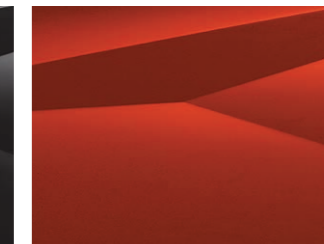
Intense Blue



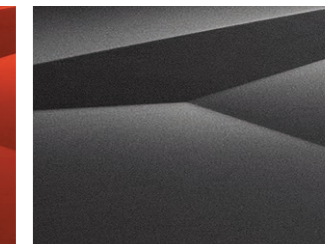
Calypso Red/Scarlet Red Pearl



Phantom Black



Lava Orange Elantra and N Line Only



Portofino Gray Elantra Only

## ELANTRA / ELANTRA Hybrid

Power & Handling	SE	SEL	N Line	Limited	Blue	Limited
147 hp/132 lb-ft, 2.0L Atkinson Cycle 4-cylinder engine	●	●	–	●	–	–
201 hp/195 lb-ft, 1.6L Turbo GDI 4-cylinder engine	–	–	●	–	–	–
139 net hp, 1.6L GDI Atkinson Cycle 4-cylinder hybrid engine with 32 kW permanent magnet high-power density motor	–	–	–	–	●	●
Smartstream Intelligent Variable Transmission (IVT)	●	●	–	●	–	–
6-speed manual transmission   7-speed Dual Clutch Transmission (DCT) with SHIFTRONIC® paddle shifters	–	–	●	–	–	–
6-speed EcoShift® Dual Clutch Transmission (DCT)	–	–	–	–	●	●
Electronic Parking Brake	–	●	–	●	●	●
Drive Mode Select	●	●	●	●	●	●
Multi-link rear suspension	–	–	●	–	●	●
Larger 12" front brake rotors	–	–	●	–	–	–
4-wheel disc brakes	●	●	●	●	●	●
Exterior Features	SE	SEL	N Line	Limited	Blue	Limited
Chrome grille	●	●	–	–	●	–
Dark chrome exterior accents/chrome window belt molding	–	●	–	●	–	●
N Line gloss black grille/N Line unique front/rear fascia	–	–	●	–	–	–
Chrome-tipped dual exhaust outlet	–	–	●	–	–	–
Solar control glass	●	●	●	●	●	●
Automatic headlights and LED Daytime Running Lights	●	●	●	●	●	●
High Beam Assist	●	●	●	●	●	●
Projector headlights	●	●	●	–	●	–
High/low-beam LED headlights	–	–	–	●	–	●
LED/bulb combination taillights	–	●	–	●	●	–
Full LED taillights	–	–	●	–	–	●
Heated side mirrors	–	●	–	●	●	●
Side mirrors with turn signal indicators	–	●	–	●	–	●
Rearview camera with dynamic parking guidelines	●	●	●	●	●	●
Power tilt-and-slide sunroof	–	●	●	●	–	●
Hands-free smart trunk release	–	●	●	●	●	●
Interior Features	SE	SEL	N Line	Limited	Blue	Limited
Proximity Key entry with push button start	–	●	●	●	●	●
4.2" color LCD multi-information cluster display	●	●	●	–	●	–
10.25" digital instrument cluster display	–	●	–	●	–	●
Tilt-and-telescopic steering wheel with audio controls	●	●	●	●	●	●
Dual automatic temperature control	–	●	●	●	●	●
Cruise control	●	●	●	–	●	–
Smart Cruise Control with Stop & Go	–	●	–	●	–	●
Leather-wrapped steering wheel and shift knob	–	●	●	●	–	●

Interior Features	SE	SEL	N Line	Limited	Blue	Limited
Heated front seats	–	●	●	●	●	●
Ventilated front seats	–	–	–	–	–	●
Integrated Memory System for driver seat and side mirrors	–	–	–	–	–	●
6-way adjustable driver seat including height adjustment	●	●	–	–	–	–
Power driver seat with adjustable lumbar support	–	●	●	●	–	●
Cloth seating surfaces	●	●	–	–	●	–
Leather-trimmed seating surfaces	–	–	–	●	–	●
N Line unique leather/cloth combination sport seating surfaces	–	–	●	–	–	–
Alloy sport pedals and black headliner	–	–	●	–	–	–
60/40 split-folding rear seats with armrest and cupholders	–	●	●	●	–	●
Sunvisors with illuminated vanity mirror and extension	–	●	●	●	●	●
Auto-dimming rearview mirror	–	–	–	●	–	●
Ambient LED interior lighting (adjustable - 64 colors)	–	–	–	●	–	●
Advanced Safety	SE	SEL	N Line	Limited	Blue	Limited
Forward Collision-Avoidance Assist with Pedestrian Detection	●	●	●	–	●	–
Forward Collision-Avoidance Assist with Pedestrian, Cyclist and Junction-Turning Detection	–	●	–	●	–	●
Lane Keeping Assist and Lane Following Assist	●	●	●	●	●	●
Driver Attention Warning	●	●	●	●	●	●
Blind-Spot Collision-Avoidance Assist	●	●	●	●	●	●
Rear Cross-Traffic Collision-Avoidance Assist	●	●	●	●	●	●
Safe Exit Warning and Rear Occupant Alert	●	●	●	●	●	●
Parking Distance Warning - Reverse	–	–	–	●	–	●
Parking Collision-Avoidance Assist - Reverse	–	–	–	●	–	●
Highway Driving Assist	–	–	–	●	–	●
Audio & Connected Car Technology	SE	SEL	N Line	Limited	Blue	Limited
8" touchscreen AM/FM/HD Radio™ audio system	●	–	–	–	–	–
8" touchscreen AM/FM/HD Radio™/SiriusXM Satellite Radio audio system with 6 speakers	–	●	●	–	●	–
10.25" high-resolution touchscreen navigation system with AM/FM/HD Radio™/SiriusXM Satellite Radio	–	–	–	–	–	●
Bose® 8-speaker premium audio system	–	●	–	●	–	●
Apple CarPlay® and Android Auto™ (wireless   wired)	● –	● –	● –	– ●	● –	– ●
Bluetooth® hands-free phone with audio streaming	●	●	●	●	●	●
Wireless device charging	–	●	●	●	–	●
Bluelink® Connected Car System (3 years complimentary)	–	●	●	●	●	●
Dynamic Voice Recognition	–	–	–	●	–	●
Hyundai Digital Key	–	●	●	●	–	●
Dual USB outlets (1 charging + data / 1 charging)	●	●	●	●	●	●

● Standard ○ Optional ● Convenience Package ● Premium Package – Not Available



ELANTRA Limited in Portofino Gray





Hyundai Hope On Wheels®

Helping Kids Fight Cancer Since 1998



## Hope makes every Hyundai better.

Each time we sell a Hyundai, a portion goes to Hyundai Hope On Wheels® to help find a cure for childhood cancer. Over the last 23 years, Hyundai Hope On Wheels has donated more than \$185 million. Hope is our greatest feature. And it comes standard on every Hyundai. For more information, please visit [HyundaiHopeOnWheels.org](http://HyundaiHopeOnWheels.org).



## America's Best Warranty

**POWERTRAIN LIMITED WARRANTY**

**10** YEARS  
100,000 MILES

**NEW VEHICLE LIMITED WARRANTY**

**5** YEARS  
60,000 MILES

**ANTI-PERFORATION WARRANTY**

**7** YEARS  
UNLIMITED MILES

**24/7 ROADSIDE ASSISTANCE**

**5** YEARS  
UNLIMITED MILES

**HYBRID/ELECTRIC SYSTEM COMPONENTS**

**10** YEARS  
100,000 MILES



Complimentary maintenance includes Hyundai-approved oil and oil filter change (except for electric vehicles and fuel cell electric vehicles) plus tire rotation at normal factory-scheduled intervals for 3 years or 36,000 miles, whichever comes first. This offer valid only for new 2020-2022 Hyundai models purchased or leased on or after February 1, 2020. See your Hyundai dealer for further details and limitations.



Our commitment to Hyundai owners does not end with the transfer of keys. Wherever the road takes you, we've got your back with Owner Assurance, an umbrella of services and benefits that includes America's Best Warranty, 24/7 Roadside Assistance, innovative safety and car care features...and more.

See dealer for LIMITED WARRANTY details. Fuel economy estimated by EPA for comparison only. Mileage may vary. While the information contained in this brochure was correct at the time of printing, specifications and equipment can change. Feature comparisons based on competitor information available at the time of printing. No warranty or guarantee is being extended in this brochure, and Hyundai reserves the right to change product specifications and equipment at any time without incurring obligations. Some vehicles are shown with optional equipment. Specifications apply to U.S. vehicles only. Please contact your Hyundai dealer for current vehicle specifications. As part of Hyundai's commitment to a responsible environment, this brochure was printed using paper certified by the Forest Stewardship Council®. FSC® certification helps ensure that the highest social and environmental standards are met in the making of the paper we use, contributing to conservation, responsible management and community-level benefits for people near the forests.



©2021 HYUNDAI NP02082022

DEALER ePROCESS