

# MALIBU 2019

CHEVROLET





Malibu RS in Cajun Red Tintcoat  
(extra-cost color).



***FINALLY, A CAR THAT  
REFLECTS YOUR HIGHEST  
EXPECTATIONS.***

With a sophisticated, updated appearance and remarkable driving dynamics, the 2019 Malibu is ready to take you wherever the road leads.

A new turbocharged RS ups the wow factor, while Malibu Premier surrounds you with all-encompassing luxuries, including heated and ventilated front seats, new heated rear outboard seats and dual-zone automatic climate control.

Available advanced safety technologies can assist in keeping you informed and help you prevent a potential collision. We're especially proud to say Malibu has been named "Most Dependable Midsize Car" by J.D. Power<sup>1</sup> (award based on 2015 model).

<sup>1</sup> The Chevrolet Malibu received the lowest number of problems per 100 vehicles among Midsize Cars in the J.D. Power 2018 U.S. Vehicle Dependability Study, based on 36,896 total responses, measuring problems experienced during the past 12 months by original owners, surveyed October–December 2017. Your experiences may vary. Visit [jdpower.com/cars](http://jdpower.com/cars).



***FIND NEW ROADS™***



**MALIBU RS**



Malibu RS in Cajun Red  
Tintcoat (extra-cost color).

**POISED FOR PERFORMANCE.**  
New for 2019, Malibu RS has the looks that invite a double take. A blacked-out sport grille, Black bowtie emblems, 18-inch wheels, a rear spoiler and dual exhaust outlets put an artistic spin on the midsize car.

**ENJOY A BRIGHT OUTLOOK.** Beautifully sculpted headlamps on Malibu RS contribute to the modern appearance while offering impressive visibility. LT, Hybrid and Premier feature LED daytime running lamps.







**1. IT'S ALL IN THE DETAILS.**

A dual-outlet exhaust with polished tips on Malibu RS gives function its own precise, premium form.

**2. SIGNATURE RS STYLE.** Exclusive 18-inch bright machined-aluminum wheels with Lunar Gray pockets punctuate exterior styling and reinforce this Malibu as a signed original.

**3. A BOLD DEBUT.** New 2019 Malibu styling is enhanced on RS models with a chrome-accented, blacked-out grille and Black bowtie emblems.

**4. THE ART OF A MEMORABLE EXIT.** On Malibu RS, a rear decklid spoiler and dual-element taillamps make a distinctive statement.





**PREMIUM DETAILS  
MAKE LASTING IMPRESSIONS.**

**SHEER ELEGANCE.** Inside Malibu RS, sculpted Jet Black Premium Cloth bucket seats combine with a leather-wrapped shifter and steering wheel to enhance your driving experience.

**THE SCIENCE OF QUIET.** An acoustic-laminated windshield, a custom dash panel with strategic applications of laminated steel, and triple-sealed doors are just a few of the features that help keep the outside world where it belongs.

Malibu RS interior in Jet Black.





## INTERIOR DESIGN



<sup>1</sup> Does not detect people or items. Always check rear seat before exiting.

Malibu Premier interior  
in Light Wheat with  
Dark Atmosphere accents.

### **MAKE EVERY DRIVE MORE ENJOYABLE.**

Whether you are driving across town or across the country, the seats in Malibu are contoured for optimal support. The 8-way power driver seat, standard on RS, LT, Hybrid and Premier, puts you in complete control of your comfort.

**RELAX IN A WARM EMBRACE.** Premier features heated front seats and new heated rear outboard seats. There's also a heated steering wheel to chase away the chill and ventilated front seats to help keep you cool when things heat up.

### **UPSCALE ACCOMMODATIONS.**

Satin chrome is generously displayed throughout the Malibu interior for a

clean, sophisticated appearance. Soft touch components exude an impressive level of quality.

**EVERY SEAT, FIRST-CLASS.** Rear-seat passengers were kept top of mind in Malibu. That's why the design includes generous rear-seat leg room and rear doors that open wide to help make entry and exit easy.

**DON'T FORGET YOUR LAPTOP.** Rear Seat Reminder<sup>1</sup> activates when the rear doors are opened and closed up to 10 minutes before or anytime while your vehicle is on, so when you turn off the vehicle under certain conditions, you will get a reminder to double-check for valuables left behind.

**DEP**  
DEALER ePROCESS



Malibu Premier interior in Light Wheat with Dark Atmosphere accents and available features.



**YOUR REQUEST FOR EXCELLENCE,  
BEAUTIFULLY FULFILLED.**

**DEP**  
DEALER ePROCESS



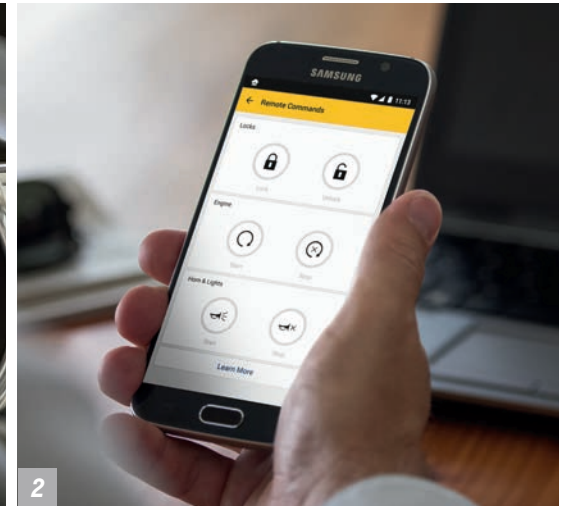
## TECHNOLOGY

**1. THE MORE YOU KNOW.** An enhanced Driver Information Center with 8-inch diagonal reconfigurable display is standard on Hybrid and Premier. It allows you to choose from two screens, Sport and Touring, and have at-a-glance access to important features and data.

**2. myChevrolet Mobile App!** Simply download the app to your compatible smartphone and if your vehicle is properly equipped, you can start or stop your engine, lock or unlock your doors<sup>2</sup> (requires paid subscription after trial), send destinations to your available navigation<sup>3</sup> system, view key vehicle diagnostic information,<sup>4</sup> set parking reminders and more. Requires available Remote Access Plan.<sup>5</sup>

**3. MORE THAN A PRETTY FACE.** With Apple CarPlay<sup>®6</sup> compatibility, you can simply and smartly connect with some of your most used iPhone<sup>®</sup> features, including Maps, Music, Messages and Phone, right on your touch-screen display.

**4. STAY CHARGED UP.** Conveniently charge your compatible cell phone with the available wireless charging station<sup>7</sup>



<sup>1</sup> Available on select Apple and Android devices. Service availability, features and functionality vary by vehicle, device and the plan you are enrolled in. Device data connection required. Visit [onstar.com](http://onstar.com) for details and limitations. <sup>2</sup> Unlock feature requires automatic locks. Remote start requires GM factory-installed and enabled remote start system. Requires paid subscription. Services are subject to User Terms and limitations. <sup>3</sup> Send-to-Navigation requires subscription. Service varies by vehicle model. Map coverage available in the United States, Puerto Rico and Canada. <sup>4</sup> Diagnostic capabilities vary by model and plan. Message and data rates may apply. Requires contact method on file and enrollment to receive alerts. Not all issues deliver alerts. <sup>5</sup> Remote Access Plan does not include emergency or security services. Visit [onstar.com](http://onstar.com) for details and limitations. <sup>6</sup> Vehicle user interface is a product of Apple and its terms and privacy statements apply. Requires compatible iPhone and data plan rates apply. <sup>7</sup> The system wirelessly charges one PMA- or Qi-compatible mobile device. Some devices require an adaptor or back cover. To check for phone or other device compatibility, visit [my.chevrolet.com/learn](http://my.chevrolet.com/learn) for details.

Apple CarPlay and iPhone are trademarks of Apple Inc., registered in the U.S. and other countries.



Malibu Premier interior in Medium Ash Gray with Dark Atmosphere accents and available features.

#### **EASY ANDROID CONNECTION.**

With Android Auto™<sup>1</sup> compatibility, you can interact with select smartphone apps. This system takes some of your compatible Android™ phone's features and lets you access them on the touch-screen display. You can access your phone, text messages, music, navigation and more.

**ON-COMMAND CONNECTIVITY.** With the standard Chevrolet Infotainment 3 System<sup>2</sup>, you can easily make hands-free calls, play music and access contacts from your compatible smartphone via the color touch-screen display or through voice commands.

**CUSTOMIZE YOUR DRIVE.** Easily browse, select and install apps<sup>3</sup> that can help enhance your driving experience. Using the vehicle's touch-screen, you can customize your content with music, audiobooks, weather and more.

**Wi-Fi IN YOUR MALIBU.** Chevrolet offers available 4G LTE Wi-Fi<sup>4</sup> that provides a better in-vehicle experience than your smartphone. Our strong signal means you have a fast and reliable connection for up to seven devices.

<sup>1</sup> Vehicle user interface is a product of Google and its terms and privacy statements apply. Requires the Android Auto app on Google Play and an Android compatible smartphone running Android 5.0 Lollipop or higher. Data plan rates apply. <sup>2</sup> Chevrolet Infotainment System functionality varies by model. Full functionality requires compatible Bluetooth and smartphone, and USB connectivity for some devices. <sup>3</sup> Visit [chevrolet.com/connectivity](http://chevrolet.com/connectivity) for more details. <sup>4</sup> Service varies with conditions and location. Requires active service plan and paid AT&T data plan. Visit [onstar.com](http://onstar.com) for details and limitations.

Android, Android Auto, Google, Google Play and other marks are trademarks of Google LLC.

**DEALER ePROCESS**



PERFORMANCE



AVAILABLE

**2.0L TURBO**

ENGINE WITH 9-SPEED AUTOMATIC TRANSMISSION

**250**

HORSEPOWER

**260**

LB.-FT. OF TORQUE

Malibu Premier in Shadow Gray Metallic with available features.

**2.0L TURBO ENGINE.** The robust response of this available 2.0L turbo engine is sure to put a smile on your face. Here are the numbers: 250 horsepower and 260 lb.-ft. of torque. A 9-speed automatic transmission offers quick, seamless shifting. Both are standard on Premier. And while performance is the first thing you'll notice, an EPA-estimated 32 MPG highway<sup>1</sup> is bound to keep your attention.

**1.5L TURBO ENGINE.** Powerfully efficient is the perfect way to describe this engine. Paired with a new Continuously Variable Transmission, this 1.5L turbo engine offers 163 horsepower, 184 lb.-ft. of torque, and the kind of driving experience and performance you may not expect. It's not just exhilarating, it's also efficient, offering an EPA-estimated 36 MPG highway<sup>1</sup> and a maximum highway range of up to 560 miles per tank.<sup>2</sup>

**PROVEN HYBRID TECHNOLOGY.**

Leveraging components and knowledge from the Chevrolet Volt and Bolt EV, the 2019 Malibu Hybrid is powered by a direct injected 1.8L 4-cylinder engine mated to a two-motor electric drive unit. The drive unit provides additional energy to assist the engine for a total of 182 horsepower (136 kW).

**49 MPG CITY AND 43 MPG HIGHWAY<sup>3</sup>**

Malibu Hybrid offers an estimated 49 MPG city and 43 MPG highway.<sup>3</sup> This can translate to a maximum highway range of up to 550 miles per tank.<sup>4</sup>

**LITHIUM-ION BATTERY PACK.** An 80-cell, 1.5 kWh lithium-ion battery pack provides electric power to the hybrid system that can propel Malibu Hybrid to speeds over 50 mph with electricity alone. The gasoline-powered engine automatically comes on at higher speeds and high loads to provide additional energy.

<sup>1</sup> EPA-estimated MPG city/highway: Malibu with 2.0L engine 22/32, with 1.5L engine 29/36. <sup>2</sup> Based on EPA-estimated 36 MPG highway and fuel tank capacity. Your range may be less. <sup>3</sup> EPA estimated. <sup>4</sup> Based on EPA-estimated 43 MPG highway and fuel tank capacity. Your range may be less.





Malibu RS in Silver Ice Metallic.



**LIGHT AND STRONG.** Malibu features a robust body structure that contributes to its nimble handling and excellent ride. By combining both press-hardened steel and ultra-high-strength steel, engineers created a cabin that is strong and lightweight.

**QUIET AND SERENE.** The quiet nature of Malibu begins with a honed exterior shape. It continues with sound-softening acoustic materials that help reduce, block and absorb road noise. The bottom line for you: a rewarding drive, one hushed mile after another.

**PRECISELY TUNED.** The MacPherson strut front suspension and independently tuned 4-link rear suspension are precision calibrated for impressive ride and handling.

**RESPONSIVE AND AGILE.** Variable-effort Electric Power Steering (EPS) uses energy only when steering effort is applied. Balancing responsiveness and comfort, EPS feels light but agile, providing greater assistance at low speeds and tighter control when you're cruising at highway speeds.





## SAFETY

**SAFETY STARTS WITH YOU.** Safety or driver assistance features are no substitute for the driver's responsibility to operate the vehicle in a safe manner. The driver should remain attentive to traffic, surroundings and road conditions at all times. Visibility, weather and road conditions may affect feature performance. Read the vehicle Owner's Manual for more important feature limitations and information.





## WE'RE SERIOUS ABOUT SAFETY.



### **ADAPTIVE CRUISE CONTROL – ADVANCED.**

This available feature on Premier can automatically adapt your cruise control speed in order to maintain a driver-selected following gap to vehicles detected ahead while you steer.



### **AVAILABLE FRONT PEDESTRIAN**

**BRAKING.** At speeds up to 50 mph, a forward-looking camera surveys the road ahead, flashing a warning signal and a series of eight beeps when the vehicle is approaching a pedestrian ahead too fast. If necessary, the available system can even automatically apply last-second braking.



### **FORWARD AUTOMATIC BRAKING.**

Available on Premier, radar-based Forward Automatic Braking can help mitigate collisions or even prevent them at very low speeds. If the system detects an imminent front-end collision with a detected vehicle, it alerts you and can automatically apply the brakes if you have not already done so.



### **LOW SPEED FORWARD AUTOMATIC**

**BRAKING.** Available on LT, Hybrid and Premier, camera-based Low Speed Forward Automatic Braking can help prevent or mitigate front-end collisions with detected vehicles at speeds below 50 mph.



### **FORWARD COLLISION ALERT.**

This available feature monitors how close your vehicle is to the vehicle in front of you. If the system determines that a front-end collision with a detected vehicle is imminent, it can alert the driver to a potential crash. It also warns the driver if their Malibu is following a detected vehicle much too closely.



### **LANE KEEP ASSIST WITH LANE**

**DEPARTURE WARNING.** At speeds above 37 mph, this available camera-based system monitors road lines and will gently turn the steering wheel to help keep the vehicle in its lane if the vehicle begins leaving the lane without the use of a turn signal.



### **AVAILABLE LANE CHANGE ALERT WITH**

**SIDE BLIND ZONE ALERT.** Radar sensors in the rear corners of the vehicle can help detect fast-approaching vehicles in the adjacent lanes as well as moving vehicles in the side mirror blind zones. Amber icons in the exterior mirrors indicate a vehicle's presence.



### **REAR CROSS TRAFFIC ALERT.**

Using radar sensors, this available feature can alert you to crossing vehicles behind your Malibu when backing up. Audible warnings, as well as visual alerts on the Rear Vision Camera screen, are triggered if approaching vehicles are detected.



**REAR VISION CAMERA.** When traveling in Reverse at low speeds, the standard Rear Vision Camera helps provide a real-time view of the area immediately behind your Malibu on the touch-screen display. A new HD Rear Vision Camera is standard on Hybrid and Premier.



**REAR PARK ASSIST.** This available feature helps you when backing up by sounding an audible alert and providing visual indication on the Rear Vision Camera display when it detects certain stationary objects in close proximity behind the vehicle.



### **AUTOMATIC PARKING ASSIST.**

This ingenious available system enables Malibu Premier to detect viable parking spaces, determine approach angles and take over the steering to neatly maneuver into an available space. The driver follows text commands, selects gear, and performs all braking and acceleration, but the vehicle steers itself into any suitably sized reverse parallel or reverse right-angle (90-degree) parking spot.



### **INTELLIBEAM HEADLAMPS.**

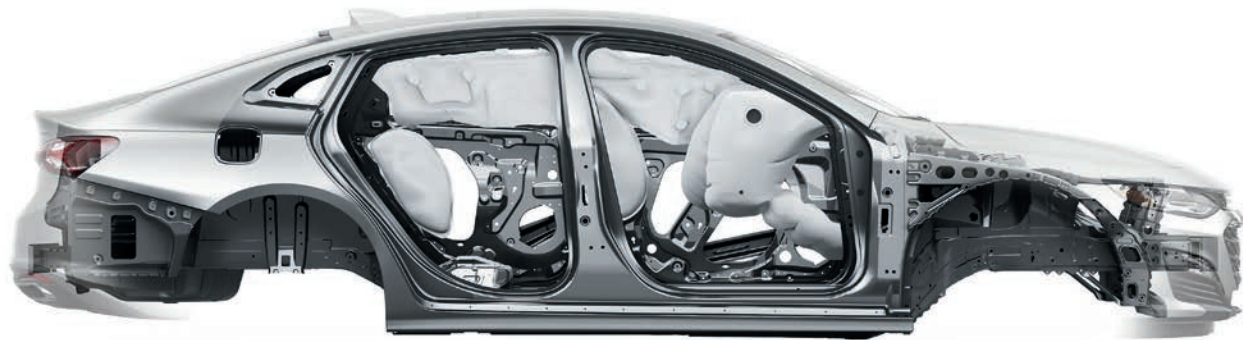
When oncoming headlamps are sensed or when taillamps are detected in front of the vehicle, the available IntelliBeam® high beam assist intuitively adjusts between low and high beams.



Malibu RS in Cajun Red Tintcoat  
(extra-cost color).







1

**1. THE STRENGTH AROUND YOU.**

Malibu is equipped with a safety cage containing ultra-high-strength steel and 10 standard airbags!

**2. INSPIRE CONFIDENCE.** Perfect for new drivers, available Teen Driver technology helps encourage better driving habits by providing an in-vehicle report card that monitors the frequency of certain available safety feature activations, muting the audio system when front-seat occupants aren't wearing their seat belts, and giving audible and visual warnings when the vehicle is traveling over a predetermined speed.



2



3

**3. ONSTAR® AUTOMATIC CRASH**

**RESPONSE<sup>2</sup>** In a crash, built-in sensors can automatically connect you to a specially trained Emergency Medical Dispatch-certified Advisor<sup>3</sup> who can help you get the assistance you need – even if you can't ask for it. Advisors can use GPS technology to pinpoint your vehicle's location and request emergency help. OnStar Automatic Crash Response is included in the available OnStar Safety & Security Plan<sup>2</sup>

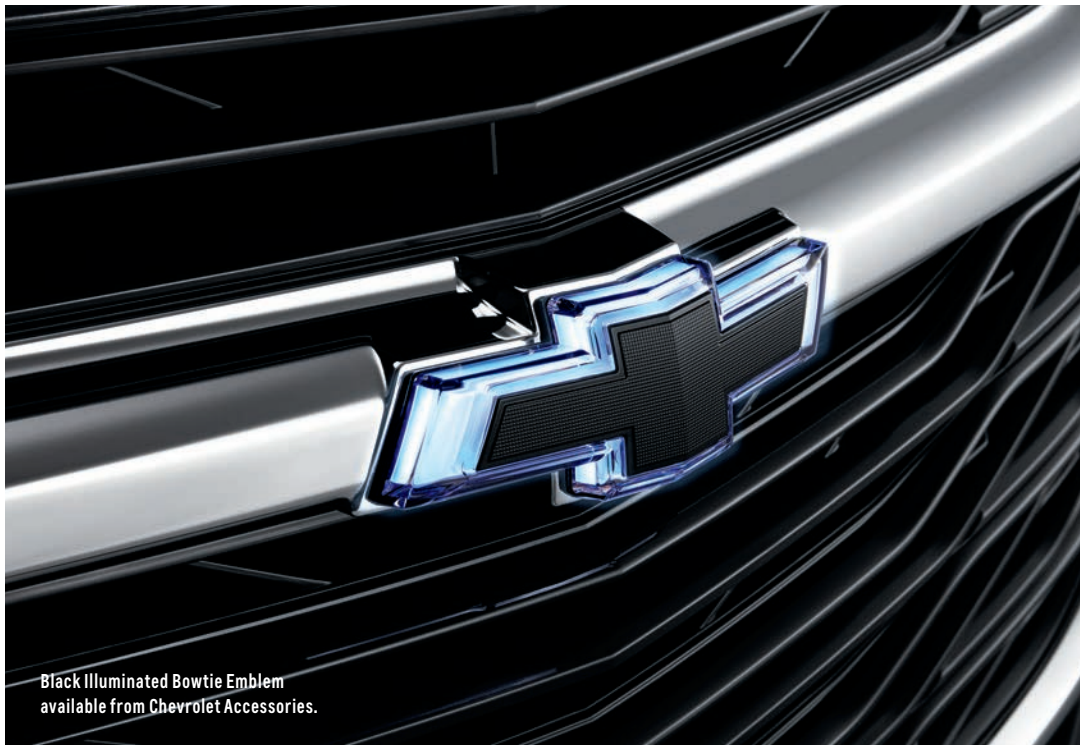
<sup>1</sup> Sitting too close to an airbag when it deploys can increase the risk of serious injury or death. Always properly wear your seat belt. A NOTE ON CHILD SAFETY: Always use seat belts and the correct child restraint for your child's age and size, even with airbags. Even in vehicles equipped with the Passenger Sensing System, children are safer when properly secured in a rear seat in the appropriate infant, child or booster seat. Never place a rear-facing infant restraint in the front seat of any vehicle equipped with an active frontal airbag. See your vehicle Owner's Manual and the child safety seat instructions for more safety information. <sup>2</sup> OnStar plan, working electrical system, cell service and GPS signal required. OnStar links to emergency services. Visit [onstar.com](http://onstar.com) for details and limitations. <sup>3</sup> OnStar Advisors are certified by the International Academies of Emergency Dispatch.



## SPECIAL FEATURES



Available tilt/sliding power sunroof with express-open feature, sunshade and additional fixed rear skylight.



Black Illuminated Bowtie Emblem available from Chevrolet Accessories.



Leather Package, available on LT and Hybrid, includes heated, leather-wrapped steering wheel, leather-wrapped shift knob and inside rearview auto-dimming mirror.



## WHEELS



16" Steel with Painted Wheel Cover  
(Standard on L)



16" Aluminum  
(Standard on LS)



18" Bright Machined-Aluminum with Lunar Gray Pockets  
(Standard on RS)



17" Aluminum  
(Standard on LT and Hybrid)



18" Aluminum  
(Standard on Premier)



19" Aluminum  
(Available on Premier with Sun and Wheel Package)



## COLORS



SUMMIT WHITE



IRIDESCENT PEARL TRICOAT<sup>1,2,3,4,5</sup>



SILVER ICE METALLIC



SANDY RIDGE METALLIC<sup>2,3,4,5,6</sup>



SHADOW GRAY METALLIC<sup>2</sup>

<sup>1</sup> Extra-cost color. <sup>2</sup> Not available on L. <sup>3</sup> Not available on LS. <sup>4</sup> Not available on RS. <sup>5</sup> Not available with Dark Atmosphere/Medium Ash Gray interior. <sup>6</sup> Not available with Dark Atmosphere/Light Wheat interior.



**COLORS (CONTINUED)**



CAJUN RED TINTCOAT<sup>1,2,3</sup>



PACIFIC BLUE METALLIC<sup>2,4,5</sup>



NORTHSKY BLUE METALLIC<sup>2,3,6</sup>

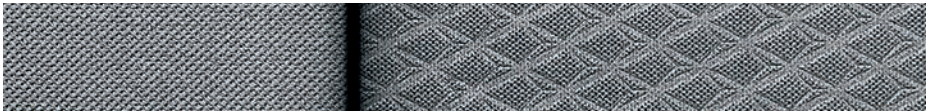


MOSAIC BLACK METALLIC<sup>2</sup>

<sup>1</sup> Extra-cost color. <sup>2</sup> Not available on L. <sup>3</sup> Not available on LS. <sup>4</sup> Not available with Dark Atmosphere/Medium Ash Gray interior. <sup>5</sup> Not available with Dark Atmosphere/Light Wheat interior. <sup>6</sup> Not available on RS.



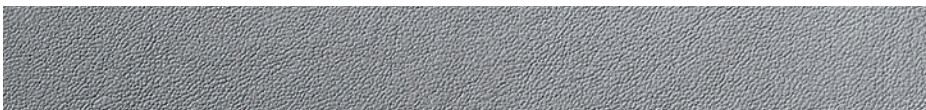
## FABRICS



Medium Ash Gray Premium Cloth with Dark Atmosphere Accents<sup>1,2,3</sup>



Jet Black Premium Cloth with Jet Black Accents<sup>4,5</sup>



Medium Ash Gray Leather Appointments with Dark Atmosphere Accents<sup>6,7</sup>

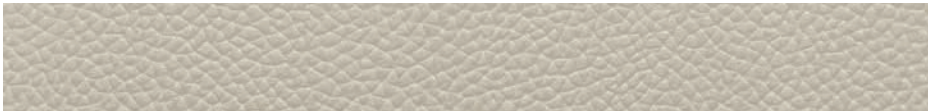


Jet Black Leather Appointments with Jet Black Accents<sup>6</sup>

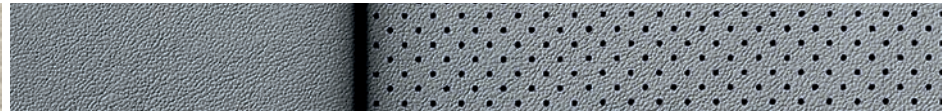
<sup>1</sup> Standard on L. Requires Silver Ice Metallic or Summit White exterior colors. <sup>2</sup> Standard on LS. Requires Shadow Gray Metallic, Silver Ice Metallic, Summit White or Mosaic Black Metallic exterior colors. <sup>3</sup> Standard on LT and Hybrid. Requires Northsky Blue Metallic, Shadow Gray Metallic, Silver Ice Metallic, Summit White, Mosaic Black Metallic or Cajun Red Tintcoat exterior colors. <sup>4</sup> Standard on LS. Requires Pacific Blue Metallic, Shadow Gray Metallic, Silver Ice Metallic, Summit White or Mosaic Black Metallic exterior colors. <sup>5</sup> Standard on LT and Hybrid. <sup>6</sup> Available on LT and Hybrid with available Leather Package. <sup>7</sup> Requires Northsky Blue Metallic, Shadow Gray Metallic, Silver Ice Metallic, Summit White, Mosaic Black Metallic or Cajun Red Tintcoat exterior colors.



**FABRICS (CONTINUED)**



Light Wheat Leather Appointments with Dark Atmosphere Accents<sup>1,2</sup>



Medium Ash Gray Perforated Leather Appointments with Dark Atmosphere Accents<sup>3,4</sup>



Jet Black Perforated Leather Appointments with Jet Black Accents<sup>4</sup>



Light Wheat Perforated Leather Appointments with Dark Atmosphere Accents<sup>2,4</sup>

<sup>1</sup> Available on LT and Hybrid with available Leather Package. <sup>2</sup> Requires Northsky Blue Metallic, Iridescent Pearl Tricoat, Shadow Gray Metallic, Silver Ice Metallic, Summit White, Mosaic Black Metallic or Cajun Red Tintcoat exterior colors. <sup>3</sup> Requires Northsky Blue Metallic, Shadow Gray Metallic, Silver Ice Metallic, Summit White, Mosaic Black Metallic or Cajun Red Tintcoat exterior colors. <sup>4</sup> Standard on Premier.



## SELECT VEHICLE FEATURES

### MALIBU L

1.5L turbocharged 4-cylinder engine with Direct Injection and stop/start technology
Continuously Variable Transmission (CVT)
MacPherson strut front suspension and 4-link rear suspension
10 airbags <sup>1</sup>
1 month of OnStar Safety & Security coverage <sup>2</sup> which includes Automatic Crash Response, Emergency Services, Stolen Vehicle Assistance, Roadside Assistance and Turn-by-Turn Navigation <sup>3</sup>
StabiliTrak <sup>®</sup> Electronic Stability Control System
Tire Pressure Monitoring System <sup>4</sup>
Theft-deterrent system with content-theft alarm
Rear Vision Camera <sup>5</sup>
Daytime running lamps
Halogen projector-beam headlamps with automatic exterior lamp control
Outside power-adjustable Black mirrors
16" steel wheels with painted wheel covers
Capless fueling
Keyless Open and Start
Cruise control with Set and Resume Speed
Power-programmable door locks with lockout protection and rear-door child safety locks
Chevrolet Infotainment 3 System <sup>6</sup> with 8-inch diagonal color touch-screen
6-speaker sound system
Bluetooth <sup>®</sup> audio streaming <sup>7</sup> for music and select phones
Android Auto <sup>™8</sup> and Apple CarPlay <sup>®9</sup> compatibility
USB port <sup>10</sup>
Tilt and telescopic steering wheel with mounted controls for audio and cruise
Driver Information Center
Rear Seat Reminder <sup>11</sup> with notification in Driver Information Center
Front buckets with reclining seatbacks and adjustable head restraints and rear seat with 60/40 split-folding seatback
Power windows with express-down
Single-zone manual climate control
Rear-window defogger
Front and rear carpeted floor mats

### MALIBU LS In addition to or replacing L features, LS includes:

16" aluminum wheels
Acoustic-laminated windshield
Teen Driver technology
Compass and outside temperature displays
Visor vanity mirrors for driver and front passenger

### MALIBU RS In addition to or replacing LS features, RS includes:

Black Chevrolet bowtie emblems
Blacked-out grille
Rear spoiler
18" Black chrome-finish aluminum wheels
Dual-outlet exhaust with polished tips
8-way power driver seat with power lumbar control
Leather-wrapped steering wheel and shift knob

### MALIBU LT In addition to or replacing LS features, LT includes:

LED daytime running lamps
LED taillamps
Outside heated power-adjustable body-color mirrors
Body-color antenna
17" aluminum wheels
Remote vehicle starter system
Dual-zone automatic climate control
SiriusXM <sup>®</sup> Radio <sup>12</sup> All Access Package with 3-month trial subscription
8-way power driver seat with power lumbar control
Illuminated visor vanity mirrors for driver and front passenger
Driver window with express-up/-down

### MALIBU HYBRID In addition to or replacing LT features, Hybrid includes:

1.8L 4-cylinder engine with Direct Injection and Hybrid electric propulsion system
HD Rear Vision Camera <sup>5</sup>
Hybrid-specific instrument cluster
Enhanced Driver Information Center with 8-inch diagonal multi-color reconfigurable display
Chevrolet Infotainment 3 Plus System <sup>6</sup> with 8-inch diagonal HD color touch-screen

### MALIBU PREMIER In addition to or replacing LT features, Premier includes:

2.0L turbocharged 4-cylinder engine with Direct Injection
9-speed automatic transmission with overdrive
Chrome door handles with body-color inserts
Dual-outlet exhaust with polished tips
18" aluminum wheels
Bright sill plates
Chevrolet Infotainment 3 Plus System <sup>6</sup> with Navigation and 8-inch diagonal HD color touch-screen display
Bose 9-speaker premium audio system
Enhanced Driver Information Center with 8-inch diagonal multi-color reconfigurable display
120-volt power outlet on rear of center console
Charge-only USB port <sup>10</sup> on rear of center console
Wireless charging <sup>13</sup>
Ambient lighting on instrument panel, front door pads and map pockets, and door handles on all doors
Inside rearview auto-dimming mirror
Memory function for driver seat and outside mirrors
Heated and ventilated driver and front passenger seats
Heated rear outboard seats
6-way power front passenger seat with power lumbar control
Perforated leather-appointed seating
Leather-wrapped steering wheel and shift knob
Heated steering wheel
Trunk mat

**1** A NOTE ON CHILD SAFETY: Always use seat belts and the correct child restraint for your child's age and size, even with airbags. Even in vehicles equipped with the Passenger Sensing System, children are safer when properly secured in a rear seat in the appropriate infant, child or booster seat. Never place a rear-facing infant restraint in the front seat of any vehicle equipped with an active frontal airbag. See your vehicle Owner's Manual and the child safety seat instructions for more safety information. **2** OnStar plan, working electrical system, cell reception and GPS signal required. OnStar links to emergency services. Roadside services provided by Allstate Roadside Services for vehicles only. Limitations and restrictions apply. Stolen Vehicle Assistance requires armed GM factory-installed theft-deterrent system, contact method on file and enrollment to receive alerts. Additional messaging and data rates may apply. Services are intended to assist with vehicle recovery and do not prevent theft or protect against damage or loss. Visit [onstar.com](http://onstar.com) for details and limitations. **3** Advisor-based Turn-by-Turn Navigation is subject to User Terms and limitations, and varies by vehicle model. Map coverage available in the United States, Puerto Rico and Canada. **4** Excludes spare tire. **5** Read the vehicle Owner's Manual for important feature limitations and information. **6** Chevrolet Infotainment System functionality varies by model. Full functionality requires compatible Bluetooth and smartphone, and USB connectivity for some devices. Map coverage available in the United States, Puerto Rico and Canada. **7** Visit [my.chevrolet.com/learn](http://my.chevrolet.com/learn) for vehicle and smartphone compatibility. **8** Vehicle user interface is a product of Google and its terms and privacy statements apply. Requires the Android Auto app on Google Play and an Android compatible smartphone running Android 5.0 Lollipop or higher. Data plan rates apply. **9** Vehicle user interface is a product of Apple and its terms and privacy statements apply. Requires compatible iPhone and data plan rates apply. **10** Not compatible with all devices. **11** Does not detect people or items. Always check rear seat before exiting. **12** If you decide to continue service after your trial, the subscription plan you choose will automatically renew thereafter and you will be charged according to your chosen payment method at then-current rates. Fees and taxes apply. To cancel you must call SiriusXM at 1-866-635-2349. See SiriusXM Customer Agreement for complete terms at [siriusxm.com](http://siriusxm.com). All fees and programming subject to change. For more information about Travel Link and NavTraffic, visit [siriusxm.com/infotainment](http://siriusxm.com/infotainment). **13** The system wirelessly charges one PMA- or Qi-compatible mobile device. Some devices require an adaptor or back cover. To check for phone or other device compatibility, visit [my.chevrolet.com/learn](http://my.chevrolet.com/learn) for details.



# SPECIFICATIONS

● STANDARD ○ AVAILABLE – NOT AVAILABLE

	L	LS	RS	LT	HYBRID	PREMIER
<b>EXTERIOR</b>						
Antenna: Black	●	●	●	–	–	–
Body-color	–	–	–	●	●	●
<b>ENGINE/CHASSIS</b>						
Engine: 1.5L turbocharged DOHC 4-cylinder with Direct Injection, Variable Valve Timing and stop/start technology; 163 hp @ 5700 rpm, 184 lb.-ft. of torque @ 2500–3000 rpm	●	●	●	●	–	–
1.8L DOHC 4-cylinder with Direct Injection, Variable Valve Timing and Hybrid electric propulsion system	–	–	–	–	●	–
2.0L turbocharged DOHC 4-cylinder with Direct Injection and Variable Valve Timing; 250 hp @ 5300 rpm, 260 lb.-ft. of torque @ 2000–5000 rpm	–	–	–	–	–	●
Transmission: Continuously Variable Transmission (CVT)	●	●	●	●	–	–
2-motor Hybrid electric drive unit	–	–	–	–	●	–
9-speed automatic with overdrive	–	–	–	–	–	●
<b>SAFETY &amp; SECURITY</b>						
10 airbags: <sup>1</sup> Frontal and knee for driver and front passenger (includes Passenger Sensing System); seat-mounted side-impact and head-curtain for front and rear outboard seating positions	●	●	●	●	●	●
Brakes: 4-wheel antilock, 4-wheel disc; Duralife <sup>®</sup> brake rotors with corrosion-resistant technology	●	●	●	●	●	●
Teen Driver technology	–	●	●	●	●	●

	L	LS	RS	LT	HYBRID	PREMIER
<b>INTERIOR</b>						
Assist handles: Front passenger	●	●	●	●	●	●
Climate control: Single-zone, manual	●	●	●	–	–	–
Dual-zone, automatic	–	–	–	●	●	●
Cabin air filter	●	●	●	●	●	●
Driver Information Center:						
Monochromatic display	●	●	●	●	–	–
High-resolution color display; includes trip/fuel information, vehicle information and vehicle settings	–	–	–	–	●	●
Power outlet: Auxiliary, integrated in center stack	●	●	●	●	●	●
Shift knob: Leather-wrapped	–	–	●	○ <sup>2</sup>	○ <sup>2</sup>	●
Steering wheel: Leather-wrapped 3-spoke with mounted controls for audio and cruise	–	–	●	○ <sup>2</sup>	○ <sup>2</sup>	●
Sunroof: Power, tilt/sliding with express-open feature, sunshade and additional fixed skylight	–	–	–	○	○ <sup>3</sup>	○ <sup>4</sup>
<b>SEATING</b>						
Seats: Premium Cloth	●	●	●	●	●	–
Leather-appointed	–	–	–	○ <sup>2</sup>	○ <sup>2</sup>	–
Perforated leather-appointed	–	–	–	–	–	●
Seat adjuster: Driver 8-way power, with lumbar control	–	–	–	●	●	●
Passenger 6-way power, with lumbar control	–	–	–	–	–	●
Heated front seats	–	–	–	●	○ <sup>5</sup>	●
Heated rear outboard seats	–	–	–	–	–	●
Ventilated front seats	–	–	–	–	–	●

	L	LS	RS	LT	HYBRID	PREMIER
<b>ENTERTAINMENT</b>						
Chevrolet Infotainment 3 System <sup>6</sup> with 8-inch diagonal color touch-screen, AM/FM stereo, Bluetooth <sup>®</sup> audio streaming <sup>7</sup> for two active devices, voice command pass-through to compatible phone, and Android Auto <sup>™8</sup> and Apple CarPlay <sup>®9</sup> compatibility	●	●	●	●	–	–
Chevrolet Infotainment 3 Plus System <sup>6</sup> with 8-inch diagonal HD color touch-screen, includes features listed above, in-vehicle apps; <sup>10</sup> and cloud-connected personalization for select infotainment and vehicle settings (subscription required for enhanced and connected services after trial period)	–	–	–	–	●	–
Chevrolet Infotainment 3 Plus System <sup>6</sup> with Navigation, includes Plus system features, connected navigation and additional memory for in-vehicle apps <sup>10</sup> (subscription required for enhanced and connected services after trial period), plus SiriusXM <sup>®</sup> NavTraffic <sup>11</sup> with 3-month trial subscription	–	–	–	–	–	●
SiriusXM Radio <sup>11</sup> All Access Package with 3-month trial subscription	–	–	–	●	●	●
Chevrolet Connected Access <sup>12</sup> with 10 years of standard connectivity, which currently includes Vehicle Diagnostics and Dealer Maintenance Notification	●	●	●	●	●	●
4G LTE Wi-Fi <sup>®13</sup> for up to seven devices, includes 1 month or 3 GB of data (whichever comes first)	–	○	○	○	○	○
USB port <sup>14</sup>	–	●	●	●	●	●
Charge-only, on rear of center console	–	–	–	–	–	●

<sup>1</sup> A NOTE ON CHILD SAFETY: Always use seat belts and the correct child restraint for your child's age and size, even with airbags. Even in vehicles equipped with the Passenger Sensing System, children are safer when properly secured in a rear seat in the appropriate infant, child or booster seat. Never place a rear-facing infant restraint in the front seat of any vehicle equipped with an active frontal airbag. See your vehicle Owner's Manual and the child safety seat instructions for more safety information. <sup>2</sup> Requires available Leather Package. <sup>3</sup> Requires available Convenience and Technology Package, Leather Package, Driver Confidence Package and Driver Confidence Package II. <sup>4</sup> Requires available Sun and Wheel Package. <sup>5</sup> Requires available Convenience and Technology Package. <sup>6</sup> Chevrolet Infotainment System functionality varies by model. Full functionality requires compatible Bluetooth and smartphone, and USB connectivity for some devices. Map coverage available in the United States, Puerto Rico and Canada. <sup>7</sup> Visit [my.chevrolet.com/learn](http://my.chevrolet.com/learn) for vehicle and smartphone compatibility. <sup>8</sup> Vehicle user interface is a product of Google and its terms and privacy statements apply. Requires the Android Auto app on Google Play and an Android compatible smartphone running Android 5.0 Lollipop or higher. Data plan rates apply. <sup>9</sup> Vehicle user interface is a product of Apple and its terms and privacy statements apply. Requires compatible iPhone and data plan rates apply. <sup>10</sup> Visit [chevrolet.com/connectivity](http://chevrolet.com/connectivity) for more details. <sup>11</sup> If you decide to continue service after your trial, the subscription plan you choose will automatically renew thereafter and you will be charged according to your chosen payment method at then-current rates. Fees and taxes apply. To cancel you must call SiriusXM at 1-866-635-2349. See SiriusXM Customer Agreement for complete terms at [siriusxm.com](http://siriusxm.com). All fees and programming subject to change. For more information about Travel Link and NavTraffic, visit [siriusxm.com/infotainment](http://siriusxm.com/infotainment). <sup>12</sup> Standard connectivity available only to original purchaser for 10 years. Connected Access services are subject to change. Does not include emergency or security services. Diagnostic capabilities vary by model and service plan. Message and data rates may apply. Requires contact method on file and enrollment to receive alerts. Not all issues will deliver alerts. Visit [onstar.com](http://onstar.com) for details and limitations. <sup>13</sup> Service varies with conditions and location. Requires active service plan and paid AT&T data plan. Visit [onstar.com](http://onstar.com) for details and limitations. <sup>14</sup> Not compatible with all devices.





## SPECIFICATIONS (CONTINUED)

● STANDARD ○ AVAILABLE – NOT AVAILABLE

	L	LS	RS	LT	HYBRID	PREMIER
<b>WHEELS</b>						
16" steel with painted wheel cover	●	–	–	–	–	–
16" aluminum	–	●	–	–	–	–
18" bright machined-aluminum with Lunar Gray pockets	–	–	●	–	–	–
17" aluminum	–	–	–	●	●	–
18" aluminum	–	–	–	–	–	●
19" aluminum	–	–	–	–	–	○ <sup>1</sup>

	L	LS	RS	LT	HYBRID	PREMIER
<b>PACKAGES</b>						
<b>Convenience and Technology Package:</b> Remote vehicle starter system, heated driver and front passenger seats, and LED taillamps	–	–	–	–	○ <sup>2</sup>	–
<b>Driver Confidence Package:</b> <sup>3</sup> Rear Park Assist, Lane Change Alert with Side Blind Zone Alert and Rear Cross Traffic Alert	–	–	–	○	○ <sup>4</sup>	○ <sup>5</sup>
<b>Driver Confidence Package II:</b> <sup>3</sup> IntelliBeam high beam assist, Lane Keep Assist with Lane Departure Warning, Forward Collision Alert, Following Distance Indicator, Low Speed Forward Automatic Braking and Front Pedestrian Braking	–	–	–	○	○ <sup>6</sup>	○ <sup>7</sup>
<b>Confidence III Package:</b> <sup>3</sup> Adaptive Cruise Control – Advanced, Forward Automatic Braking, Automatic Parking Assist and electronic parking brake	–	–	–	–	–	○ <sup>8</sup>
<b>Leather Package:</b> Leather-appointed heated driver and front passenger seats, 6-way power-adjustable front passenger seat with power lumbar control and Bose 9-speaker premium audio system	–	–	–	○	○ <sup>9</sup>	–
<b>Sun and Wheel Package:</b> Power sunroof and 19" aluminum wheels	–	–	–	–	–	○

<sup>1</sup> Requires available Sun and Wheel Package. <sup>2</sup> Requires available power sunroof, Leather Package, Driver Confidence Package and Driver Confidence Package II. <sup>3</sup> Read the vehicle Owner's Manual for important feature limitations and information.

<sup>4</sup> Requires available power sunroof, Convenience and Technology Package, Leather Package and Driver Confidence Package II. <sup>5</sup> Requires available Driver Confidence Package II and Confidence III Package. <sup>6</sup> Requires available power sunroof, Convenience and Technology Package, Leather Package and Driver Confidence Package. <sup>7</sup> Requires available Driver Confidence Package and Confidence III Package. <sup>8</sup> Requires available Driver Confidence Package and Driver Confidence Package II. Forward Automatic Braking

replaces Low Speed Forward Automatic Braking. Automatic Parking Assist replaces Rear Park Assist. <sup>9</sup> Requires available power sunroof, Convenience and Technology Package, Driver Confidence Package and Driver Confidence Package II.





CHEVROLET

## COMPLETE CARE

Experience Chevrolet Complete Care, a comprehensive coverage, warranty and protection program that comes standard with every new 2019 Chevrolet Malibu lease and purchase. Simply, it is designed around you, to make it easy to keep your Chevrolet like new – and give you the confidence you deserve when you need it most.

### YOUR COMPREHENSIVE OWNER BENEFIT PROGRAM.

Includes one maintenance visit (oil change, tire rotation and multi-point vehicle inspection)<sup>1</sup>

5 years/60,000 miles<sup>2</sup> of Roadside Assistance<sup>3</sup> and Courtesy Transportation.

3-year/36,000-mile<sup>2</sup> Bumper-to-Bumper Limited Warranty.

5-year/60,000-mile<sup>2</sup> Powertrain Limited Warranty.

6 years/100,000 miles<sup>2</sup> of Rust-Through Protection.

Chevrolet Connected Access<sup>4</sup> with 10 years of standard connectivity, which currently includes Vehicle Diagnostics and Dealer Maintenance Notification.

1 month of Chevrolet Connected Services<sup>5</sup> and 1 month of OnStar Safety & Security Plan coverage<sup>6</sup>

## DIMENSIONS

Length	193.8"	Width	73.0"	Head Room (front/rear)	39.1"/37.5"
Wheelbase	111.4"	Front Track	62.6"	Leg Room (front/rear)	42.0"/38.1"
Height	57.6"	Rear Track	62.5"	Shoulder Room (front/rear)	58.5"/57.1"

## MAXIMUM CAPACITIES

<b>EPA-ESTIMATED FUEL ECONOMY</b>		<b>FUEL TANK (APPROXIMATE)</b>	13 gallons (Hybrid) 15.8 gallons (L, LS, RS, LT and Premier)
1.5L Turbo	29 MPG city/36 highway/32 combined	<b>PASSENGER VOLUME</b>	102.5 cubic feet/seats 5
2.0L Turbo	22 MPG city/32 highway/26 combined	<b>CARGO VOLUME<sup>6</sup></b>	15.7 cubic feet (L, LS, RS, LT and Premier) 11.6 cubic feet (Hybrid)
1.8L Hybrid	49 MPG city/43 highway/46 combined		

## OWNERSHIP EXTRAS

CHEVROLET



CHEVROLET.COM/WARRANTY

CHEVROLET



CHEVROLET.COM/ACCESSORIES



ONSTAR.COM

(SiriusXM)

SIRIUSXM.COM

## NEW VEHICLE LIMITED WARRANTY

**3-YEAR/36,000-MILE BUMPER-TO-BUMPER LIMITED WARRANTY** Chevrolet will warrant each 2019 Malibu from bumper to bumper for 3 years/36,000 miles (whichever comes first; see dealer for details), with no deductible, from the original in-service date of the vehicle, for warrantable repairs that are required as a result of defects due to materials and/or workmanship. Cosmetic corrosion resulting from defects is also covered under the Bumper-to-Bumper Limited Warranty. In addition, rust-through corrosion will be covered for 6 years/100,000 miles (whichever comes first). See dealer for details.

**5-YEAR/60,000-MILE TRANSFERABLE POWERTRAIN LIMITED WARRANTY** Every 2019 Malibu comes with a 5-year/60,000-mile (whichever comes first) transferable Powertrain Limited Warranty. 24/7 Roadside Assistance and Courtesy Transportation are also offered for the duration of the Powertrain Limited Warranty. Please see your Chevrolet dealer for details.

**HYBRID WARRANTY** In addition to the Bumper-to-Bumper coverage, General Motors will warrant certain Hybrid components for 8 years or 100,000 miles, whichever comes first, from the original in-service date of the vehicle against warrantable repairs to the specific Hybrid components of the vehicle. For Hybrid owners requiring more comprehensive coverage than that provided under this Hybrid warranty, a GM Protection Plan may be available. See your Chevrolet dealer for more details.

<sup>1</sup> Maintenance visit must occur within first year of vehicle delivery. Service visit consists of ACDelco dexos1™ Full Synthetic Oil and Filter Change/Tire Rotation/MPVI. Does not include air filters. See participating dealer for other restrictions and complete details. <sup>2</sup> Whichever comes first. See dealer for details. <sup>3</sup> Roadside service provided by Allstate Roadside Services. Limitations apply. <sup>4</sup> Standard connectivity available only to original purchaser for 10 years. Connected Access services are subject to change. Does not include emergency or security services. Diagnostic capabilities vary by model and service plan. Message and data rates may apply. Requires contact method on file and enrollment to receive alerts. Not all issues will deliver alerts. Visit onstar.com for details and limitations. <sup>5</sup> Connected Services include navigation services and Remote Access Plan, and 1 month or 3 GB of 4G LTE data (whichever comes first) from vehicle delivery date. Data plans offered by AT&T. Services are subject to User Terms and limitations. Certain services require working electrical system, cell service and GPS signal. OnStar links to emergency services. Visit onstar.com for coverage map, details and system limitations. <sup>6</sup> Cargo and load capacity limited by weight and distribution.



## IMPORTANT INFORMATION

**CHEVROLET CONNECTED SERVICES AND ONSTAR** Effective May 1, 2018, available Chevrolet Connected Services have changed significantly. While many of the offered services are the same, available plans and pricing are different. Connected vehicle services require a paid connected vehicle services plan or trial and connected hardware, vehicle electrical system (including battery), wireless service and GPS satellite signals to be available and operating for features to function properly. OnStar acts as a link to existing emergency service providers. Visit [onstar.com](http://onstar.com) for coverage map, details and system limitations.

**CHEVROLET OWNER CENTER (MY.CHEVROLET.COM)** Everything you need to know. Anything you need to do. Your Chevrolet Owner Center makes it easy. Create your account today to get the most out of your new vehicle. Get special alerts and offers, schedule service, review your maintenance schedule, and view how-to videos specifically for your vehicle. All online, anytime. Visit the Owner Center today to register or take a tour.

**ENGINES** Chevrolet products are equipped with engines produced by GM Global Propulsion Systems or other suppliers to GM worldwide. The engines in Chevrolet products may also be used in other GM makes and models.

**ASSEMBLY** Chevrolet vehicles and their components are assembled or produced by different operating units of General Motors, its subsidiaries or suppliers to GM worldwide. We sometimes find it necessary to produce Chevrolet vehicles with different or differently sourced components than originally scheduled. Since some options may be unavailable when your vehicle is assembled, we suggest you verify that your vehicle includes the equipment you ordered and that, if there were changes, they are acceptable to you.

**A NOTE ON CHILD SAFETY** Always use seat belts and the correct child restraint for your child's age and size, even with airbags. Even in vehicles equipped with the Passenger Sensing System, children are safer when properly secured in a rear seat in the appropriate infant, child or booster seat. Never place a rear-facing infant restraint in the front seat of any vehicle equipped with an active frontal airbag. See your vehicle Owner's Manual and the child safety seat instructions for more safety information.

**IMPORTANT WORDS ABOUT THIS CATALOG** We have tried to make this catalog comprehensive and factual. We reserve the right, however, to make changes at any time, without notice, in prices, colors, materials, equipment,

specifications, models and availability. Specifications, dimensions, measurements, ratings and other numbers in this catalog and other printed materials provided at the dealership or affixed to vehicles are approximations based on design and engineering drawings, prototypes and laboratory tests. Your vehicle may differ due to variations in manufacture and equipment. Since some information may have been updated since the time of printing, please check with your Chevrolet dealer for complete details. Chevrolet reserves the right to lengthen or shorten the model year for any product for any reason or to start and end model years at different times. Certain vehicle features may lose their usefulness over time due to obsolescence from technological changes. Unless otherwise noted, all claims based on GM Mid-Car Sedan segment and latest available competitive information. Excludes other GM vehicles.

**FLEET ORDERS** Some standard content may be deleted on fleet orders. See dealer for details.

**CHEVROLET OWNERSHIP EXPERIENCE** Chevrolet is committed to enhancing the vehicle shopping and ownership experience through a wide array of programs. Visit [chevrolet.com](http://chevrolet.com) to build and price, find a vehicle, request a quote, compare vehicles, find financial tools or track your vehicle order. You'll also find information about 24-hour Roadside Assistance, Courtesy Transportation, Customer Assistance, GM Mobility, safety and current incentives.

**CHEVROLET.COM/SAFETY** Chevrolet is committed to keeping you and your family safe – from the start of your journey to your destination. That's why every Chevrolet is designed with a comprehensive list of safety and security features to help give you peace of mind.

**GMMOBILITY.COM (1-800-323-9935)** GM Mobility<sup>SM</sup> offers financial assistance for eligible adaptive equipment to make automotive travel easier for persons with disabilities or special transportation needs. To learn more about special GM Mobility offers, visit [gmmobility.com](http://gmmobility.com).

**THE BUYPOWER CARD** The Chevrolet BuyPower Card – Every purchase you make with the BuyPower Card from Capital One\* helps you earn toward an eligible new Chevrolet, Buick, GMC or Cadillac vehicle. There's no limit on the amount you can earn or redeem, and your Earnings don't expire. Visit [chevroletbuypowercard.com/catalogs](http://chevroletbuypowercard.com/catalogs).

\* Capital One, N.A. is the issuer of the BuyPower Card. General Motors ("GM") is responsible for the operation and administration of the Earnings program.



TWITTER.COM/CHEVROLET



YOUTUBE.COM/CHEVROLET



FACEBOOK.COM/CHEVROLET



INSTAGRAM.COM/CHEVROLET

GM, the GM logo, Chevrolet, the Chevrolet logo, and the slogans, emblems, vehicle model names, vehicle body designs and other marks appearing in this catalog are the trademarks and/or service marks of General Motors, its subsidiaries, affiliates or licensors. ©2018 OnStar LLC. All rights reserved. Sirius, XM, SiriusXM and all related marks and logos are trademarks of Sirius XM Radio Inc. The Bluetooth word mark is a registered trademark owned by Bluetooth SIG, Inc., and any use of such mark by Chevrolet is under license. Bose is a registered trademark of the Bose Corp. ©2018 General Motors. All rights reserved. October 2018







**FIND NEW ROADS™**

[CHEVROLET.COM](http://CHEVROLET.COM)

**DEP**  
DEALER ePROCESS