



2011 Honda

# CR-V



**TAKE ON** the day

You may not know what you will be doing tomorrow, but you can always be sure the CR-V is prepared for the challenge. Whether that means the weekday commute or a weekend in the mountains, the CR-V delivers just about everything you need. This year, the versatile CR-V line has expanded to include a Special Edition model, but no matter which you choose, you can be sure of a smooth, enjoyable journey.





**EVERYTHING** within reach The CR-V has a driver-friendly set of available features including a variety of storage options and compatibility for your music, and the ability to help you find new places to eat, explore, or just gas up. Whether driving across country or to your favorite spot in town, the CR-V has the tools to give you a fun ride.

CR-V EX-L shown in Tango Red Pearl.



CR-V EX-L shown with available Honda Satellite-Linked Navigation System.<sup>TM1</sup>

### BRING YOUR FAVORITES

All CR-V models let you choose your soundtrack with an MP3/auxiliary input jack; EX-L models add a USB Audio Interface<sup>2</sup> that charges and lets you control compatible MP3 players through the audio system.

Drive responsibly. Some state laws prohibit the operation of handheld electronic devices while operating a vehicle. For safety reasons, always launch your audio application or perform any other operation on your phone or audio device only when the vehicle is safely parked.

### DRIVER-FOCUSED

Select models come equipped with illuminated, steering wheel-mounted audio controls to help you keep your attention on the road ahead (SE, EX, EX-L).

### REARVIEW MONITOR

On models with navigation,<sup>1</sup> a rearview camera activates when the CR-V is in reverse. Displaying an image of the area directly behind the vehicle, the monitor helps you to see objects or people that might be in the way.

### IT'S DIGITAL CITY

All CR-V audio systems can play MP3- and Windows Media<sup>®</sup> Audio<sup>3</sup> (WMA)-compatible CDs. On SE, EX and EX-L models, a 6-disc in-dash changer is standard, and the EX-L model adds XM<sup>®</sup> Radio.<sup>4</sup>



iPod classic<sup>®</sup> is not included. iPod classic is a registered trademark of Apple Inc.





CR-V EX-L shown with Ivory Leather and available Honda Satellite-Linked Navigation System.<sup>1</sup>

### EXERCISE YOUR OPTIONS

From passengers to possessions, the 2011 CR-V has a voluminous interior flexible enough to handle it all. Many seating configurations are possible thanks to the 60/40 split rear seats, which also slide forward and back to increase legroom. With the rear seats folded forward, there's more than 72 cubic feet of cargo space<sup>5</sup> – a great excuse to bring along more toys.

### EASY ACCESS

The tailgate lifts up with the slightest nudge of your fingertips. Store cargo in a variety of ways, thanks to the dual-deck cargo shelf (EX, EX-L) that opens your options. It can keep things undercover, and it nestles in the floor, entirely out of the way, when it's not needed.<sup>5</sup>

### MORE SPACE, IN REACH

Maps, cell phones, chargers or even gloves – it'll fit in the dual glove compartments. Meanwhile, the convenient overhead storage is the perfect place for sunglasses.





for the modern **ADVENTURER**

If it's power that you seek, then you're in luck. The 2011 CR-V boasts a powerful 180-horsepower engine that's eager to please, but not at the expense of fuel efficiency.<sup>9</sup> By combining power and practicality, the CR-V makes sure you are up to the challenge.

CR-V LX shown in Alabaster Silver Metallic.



#### 4-WHEELED CONFIDENCE

The available RealTime™ 4WD system is just the thing for drives in the snow or rain – or virtually any condition with a low-traction surface. If the system detects a loss of traction, it can automatically send power to the rear wheels to help keep you underway. And there is no need for driver intervention, so you can stay focused on the challenging road ahead.

CR-V 4WD EX shown in Opal Sage Metallic with accessory roof rack and ski attachment.



CR-V EX-L shown with Ivory Leather and available Honda Satellite-Linked Navigation System.†

Airbags inflated for display purposes.

### SIX AIRBAGS

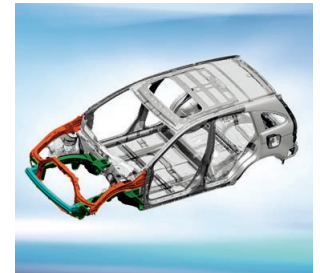
A full array of airbags is at the ready to help protect you and your passengers in sufficient impacts. Dual-stage, multiple-threshold front airbags, side-curtain airbags with rollover sensor and front side airbags with passenger-side Occupant Position Detection System (OPDS) are all standard equipment in every CR-V.\*

### ADVANCED BRAKING

The 4-wheel anti-lock brakes also feature Brake Assist, which helps the driver apply full braking in some emergency situations. Electronic Brake Distribution (EBD) helps balance braking forces, depending upon dynamic loading.

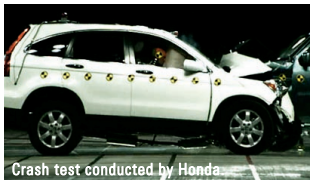
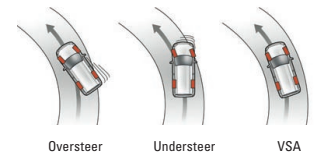
### ACE™ BODY STRUCTURE

The Advanced Compatibility Engineering™ (ACE) body structure is a Honda-exclusive body design that enhances occupant protection and crash compatibility in frontal collisions. The ACE design utilizes a network of connected structural elements to help distribute crash energy more evenly throughout the front of the vehicle.



### VEHICLE STABILITY ASSIST™

VSA®† helps sense oversteer and understeer, and then can adjust brake pressure at each wheel and reduce engine power to help restore the driver's intended path of travel.



Crash test conducted by Honda.

### CRASH COURSES

We learn by testing in some of the world's most sophisticated labs. The knowledge gained is seen in how we engineer our vehicles, with front and rear crush zones that help absorb crash energy before it can reach the passenger compartment.

### CHILD SAFETY

The CR-V's standard Lower Anchors and Tethers for Children (LATCH) system makes it easier to install compatible child seats.

### ACTIVE FRONT HEAD RESTRAINTS

Every CR-V comes with active head restraints in the front seats, which in a sufficient rear impact move forward and upward to reduce the likelihood of head and neck injury.



\*Honda reminds you and your passengers to always buckle up. Children 12 and under are safest when properly restrained in the rear seat.  
 †VSA is not a substitute for safe driving. It cannot correct the vehicle's course in every situation or compensate for reckless driving. Control of the vehicle always remains with the driver.



Engineering	LX/SE	EX	EX-L
Engine Type	In-Line 4-Cylinder	In-Line 4-Cylinder	In-Line 4-Cylinder
Displacement (cc)	2354	2354	2354
Horsepower @ rpm (SAE net)	180 @ 6800	180 @ 6800	180 @ 6800
Torque (lb-ft @ rpm)	161 @ 4400	161 @ 4400	161 @ 4400
Valve Train	16-Valve DOHC i-VTEC®	16-Valve DOHC i-VTEC	16-Valve DOHC i-VTEC
Drive-by-Wire™ Throttle System	•	•	•
Real Time™ 4-Wheel Drive	Available	Available	Available
CARB Emissions Rating <sup>7</sup>	ULEV-2	ULEV-2	ULEV-2
Direct Ignition System with Immobilizer	•	•	•
100K +/- Miles No Scheduled Tune-Ups*	•	•	•
Transmission			
5-Speed Automatic Transmission	•	•	•
Body/Suspension/Chassis			
MacPherson Strut Front Suspension	•	•	•
Multi-Link Rear Suspension	•	•	•
Power-Assisted Ventilated Front Disc/ Solid Rear Disc Brakes (in, front/rear)	11.7/12.0	11.7/12.0	11.7/12.0
Wheels	17" Styled Steel (LX) 17" Alloy (SE)	17" Alloy	17" Alloy
Interior Measurements			
Cargo Volume <sup>5</sup> (cu ft, rear seat up/down)	35.7/72.9	35.7/72.9	35.7/72.9
Seating Capacity	5	5	5
Exterior Features			
One-Touch Power Moonroof with Tilt Feature	•	•	•
Security System	•	•	•
Rear Privacy Glass	SE	•	•
EPA Mileage Estimates <sup>6</sup> /Capacities			
5-Speed Automatic (2WD; City/Highway/Combined)	21/28/24	21/28/24	21/28/24
5-Speed Automatic (4WD; City/Highway/Combined)	21/27/23	21/27/23	21/27/23
Fuel (gal)	15.3	15.3	15.3
Required Fuel	Regular Unleaded	Regular Unleaded	Regular Unleaded
Audio Systems			
160-Watt AM/FM/CD Audio System with 4 Speakers	•	•	•
160-Watt AM/FM/6-Disc In-Dash Audio System with 6 Speakers	SE	•	•
270-Watt AM/FM/6-Disc In-Dash Audio System with 7 Speakers, Including Subwoofer	•	•	•
270-Watt AM/FM/6-Disc Center-Console Audio System with 7 Speakers, Including Subwoofer	•	•	with Navigation
MP3/Windows Media® Audio <sup>3</sup> (WMA) Playback Capability	•	•	•
MP3/Auxiliary Input Jack	•	•	•
USB Audio Interface <sup>2</sup>	•	•	•
XM® Radio <sup>4</sup>	•	•	•
Digital Audio-Card Reader	•	•	with Navigation

Safety	LX/SE	EX	EX-L
Driver's and Front Passenger's Seat-Belt Reminder	•	•	•
Dual-Stage, Multiple-Threshold Front Airbags (SRS)	•	•	•
Front Side Airbags with Passenger-Side Occupant Position Detection System (OPDS)	•	•	•
Side Curtain Airbags with Rollover Sensor	•	•	•
Driver's and Front Passenger's Active Head Restraints	•	•	•
Advanced Compatibility Engineering™ (ACE™) Body Structure	•	•	•
Anti-Lock Braking System (ABS)	•	•	•
Electronic Brake Distribution (EBD) and Brake Assist	•	•	•
Vehicle Stability Assist™ (VSA™) with Traction Control	•	•	•
Tire Pressure Monitoring System <sup>8</sup> (TPMS)	•	•	•
Daytime Running Lights (DRL)	•	•	•
Lower Anchors and Tethers for CHildren (LATCH): Lower Anchors (2nd-row all), Tether Anchors (2nd-row all)	•	•	•
Comfort & Convenience			
Air Conditioning with Air-Filtration System	•	•	•
Dual-Zone Automatic Climate Control System	•	•	•
Honda Satellite-Linked Navigation System™ <sup>1</sup> with Voice Recognition and Rearview Camera	•	•	Available
Bluetooth® <sup>9</sup> HandsFreeLink®	•	•	with Navigation
Power Windows with Auto-Up/Down Driver's Window	•	•	•
Tilt and Telescopic Steering Column	•	•	•
Leather-Wrapped Steering Wheel	•	•	•
Steering Wheel-Mounted Cruise Controls	•	•	•
Steering Wheel-Mounted Audio Controls	SE	•	•
Steering Wheel-Mounted Navigation and Phone Controls	•	•	with Navigation
Center Console	•	•	•
Conversation Mirror with Sunglasses Holder	•	•	•
Instrument Panel-Mounted Shifter	•	•	Leather-Wrapped
Under-Seat Storage Bin	•	•	•
Dual-Deck Cargo Shelf	•	•	•
Seating			
Driver's Seat with Manual Height Adjustment	•	•	•
Driver's Seat with 10-Way Power Adjustment, Including Power Lumbar Support	•	•	•
Leather-Trimmed Seats	•	•	•
Heated Front Seats	•	•	•
60/40 Split Sliding Fold and Tumble Forward Rear Seats	•	•	•
40/20/40 Reclining Rear Seatbacks w/ Center Pass-Through	•	•	•
Instrumentation			
Maintenance Minder™ System	•	•	•
Exterior Temperature Indicator	•	•	•
Compass	•	•	without Navigation

\*Does not apply to fluid and filter changes. Will vary with driving conditions. Please see your Honda dealer for details.



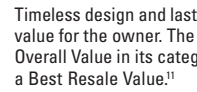
Whether you wish to buy or lease a Honda vehicle, Honda Financial Services can assist you with the process. Please ask your dealer which lease or purchase plan best suits your needs.



Honda Care® is an affordable, comprehensive vehicle and travel protection plan backed by Honda reliability, service and parts. Please see your Honda dealer for details.



Personalize and protect with Honda Genuine Accessories. They're manufactured to the same strict standards as the rest of the vehicle. Please see your Honda dealer for details.



Timeless design and lasting reliability have helped to ensure that each Honda is built to provide great value for the owner. The CR-V is no exception, which may be why IntelliChoice®<sup>10</sup> named it the Best Overall Value in its category. In addition, the CR-V was recognized by Kelley Blue Book's kbb.com as a Best Resale Value.<sup>11</sup>



Your dealer's team of trained technicians is at the ready to help keep your Honda in superb shape. All 2011 Honda vehicles – and any Honda Genuine Accessories installed at the time of vehicle purchase – are covered by the 3-year/36,000-mile New-Vehicle Limited Warranty.<sup>12</sup> Plus, Honda cars and trucks are covered by a 5-year/60,000-mile Limited Powertrain Warranty, too!<sup>12</sup> For more information or assistance, see your Honda dealer or please give us a call at 1-800-33-Honda.

<sup>1</sup> The Honda Satellite-Linked Navigation System™ is available on EX-L models in the United States, except Alaska. Please see your Honda dealer for details. <sup>2</sup> The USB Audio Interface is used for direct connection to and control of some current digital audio players and other USB devices that contain MP3, WMA or AAC music files. Some USB devices with security software and digital rights-protected files may not work. Please see your Honda dealer for details. <sup>3</sup> Windows Media® is a trademark or registered trademark of Microsoft Corporation in the United States and/or other countries. <sup>4</sup> Required XM Radio subscription sold separately after 90-day trial period. Subscriptions are governed by the XM Customer Agreement available at xmradio.com/serviceterms. Other fees and taxes apply after trial period; see XM Customer Agreement for details. Fees and programming subject to change. Service not available in Canada, Alaska, or Hawaii. ©2010 Sirius XM Radio Inc. Sirius, XM and all related marks and logos are trademarks of Sirius XM Radio Inc. and its subsidiaries. <sup>5</sup> Carrying too much cargo or improperly storing it can affect the handling, stability and operation of this vehicle. Before carrying any cargo, be sure to consult the owner's manual for load limits and loading guidelines. <sup>6</sup> Based on 2011 EPA mileage estimates. Use for comparison purposes only. Do not compare to models before 2008. Your actual mileage will vary depending on how you drive and maintain your vehicle. <sup>7</sup> ULEV-2-rated by the California Air Resources Board (CARB). <sup>8</sup> For optimal tire wear and performance, tire pressure should be checked regularly with a gauge. Do not rely solely on the monitor system. Please see your Honda dealer for details. <sup>9</sup> The Bluetooth® word mark and logos are owned by the Bluetooth SIG, Inc., and any use of such marks by Honda Motor Co., Ltd., is under license. <sup>10</sup> 2010 IntelliChoice.com. IntelliChoice is a registered trademark of Automotive.com LLC, based on 2010 model-year study. <sup>11</sup> Vehicle's projected resale value is specific to the 2010 model year. www.kbb.com/bvra10. Kelley Blue Book is a registered trademark of Kelley Blue Book Co., Inc. <sup>12</sup> 3-Year/36,000-Mile Limited Warranty, 5-Year/60,000-Mile Limited Powertrain Warranty. Ordinary maintenance or adjustments, parts subject to normal wear and replacement, and certain items are excluded. Please see your Honda dealer for details. Always use seat belts and appropriate child seats. Children 12 and under are safest when properly restrained in the rear seat. Specifications, features, illustrations and equipment shown in this brochure are based upon the latest available information at the time of printing. Although descriptions are believed to be correct, accuracy cannot be guaranteed. American Honda Motor Co., Inc., reserves the right to make changes at any time, without notice or obligation, in colors, specifications, accessories, materials and models. Some features mentioned herein are not available in all areas. Please see your Honda dealer for details. Available = Optional. All images contained herein are either owned by American Honda Motor Co., Inc., or used under a valid license. It is a violation of federal law to reproduce these images without express written permission from American Honda Motor Co., Inc., or the individual copyright owner of such images. Honda Financial Services is a DBA of American Honda Finance Corporation. Honda, the H-mark symbol, Honda Care, Honda Satellite-Linked Navigation System, Advanced Compatibility Engineering, ACE, Drive-by-Wire, HandsFreeLink, Maintenance Minder, Real Time, Vehicle Stability Assist, VSA and i-VTEC are trademarks of Honda Motor Co., Ltd. ©2010 American Honda Motor Co., Inc.