

2017

Golf Family



Volkswagen

Meet the Golf family.

Whether you're looking for fun, agility, or incredibly sporty, the versatility of the Golf family has something you'll love. As you'll see, this family tree comes with some extremely sporty roots. Explore just how the hot hatches keep their distinction.

P. 2 **Golf**

P. 10 **Golf GTI**

P. 16 **Golf R**

P. 22 **Golf SportWagen**





Urban. Legend.

Golf Wolfsburg shown in Silk Blue Metallic

Golf



Its reputation precedes it in a big way. And the Golf is one legend that's got the muscle to back up the buzz. Whether you're looking for a quick way uptown or just looking to be more upwardly mobile, this icon can deliver a level of street smarts and sheer performance that's hard to find anywhere else on the boulevard.



Full of big ideas. Still plenty of room for you.

The Golf sports a unique combination of practical and surprising features. From the leather-wrapped, multi-function steering wheel, to the available refined V-Tex leatherette seating surfaces, to the 60/40-split rear seats that fold down to offer impressive cargo space, the Golf is the perfect choice for innovation-seekers with sophisticated style.



FEATURES

- Iconic exterior design
- Rear spoiler
- Driver-focused interior
- Adjustable cargo floor
- Leather-wrapped, multi-function steering wheel
- Chrome inlay accents

AVAILABLE FEATURES

- Power tilting/sliding panoramic sunroof
- V-Tex leatherette seating surfaces
- Heated front seats

vw.com/models/golf/section/design



Golf Wolfsburg shown in Tungsten Silver Metallic and Silk Blue Metallic



We've made high tech a no-brainer.

It just keeps getting smarter. Technology is simple, intuitive, and seamless in the Golf. Now you can access select apps from your compatible smartphone right on your dash. Music, mapping, messaging, and more can be accessed via voice control thanks to Volkswagen Car-Net® App-Connect* All in all, it creates an experience as effortless as it is advanced.

FEATURES

- Bluetooth® technology with audio streaming for compatible devices
- Rearview Camera System integrated in badge
- Composition Media touchscreen sound system



CAR AND DRIVER

Car and Driver's 10Best Award

The Golf and the Golf GTI have been named two of Car and Driver's 2016 10Best Cars. Perennial favorites for 10 years running. Now that's a nice pat on the hatchback.



Golf Wolfsburg shown in Titan Black V-Tex leatherette

Volkswagen Car-Net Security & Service**

With your 3-month trial and then paid subscription, you can enjoy a host of available features that help you locate your last parked location,† check if the doors are locked,†† call for help in an emergency,** and even get vehicle health and diagnostic reports.‡

Volkswagen Car-Net App-Connect*

VW Car-Net App-Connect lets you link your compatible smartphone with Apple CarPlay™, Android Auto™, or MirrorLink® to use select apps on the touchscreen display of your Volkswagen. From streaming music to mobile maps, it can be accessed on the touchscreen.

Keyless access with push-button start††

The key fob does the job. Leave it in your pocket. You can unlock the door of your Golf as you grip the door handle. Then once you're inside, with the press of the brake and the push of the start button, your engine starts and you are ready to go.

*Always pay careful attention to the road, and do not drive while distracted. Not all features available on all operating systems. Standard text and data usage rates apply. App-Connect features require compatible device, operating system, and mobile apps. See mobile device and app providers for terms and privacy. Android Auto is a trademark of Google Inc. Apple CarPlay is a trademark of Apple Inc. MirrorLink is a registered trademark of the Car Connectivity Consortium LLC. **Verizon Telematics, Inc., is service provider of VW Car-Net Security & Service. Available on select models. Trial or paid subscription required. VW Car-Net Security & Service services require vehicle cellular connectivity and availability of vehicle GPS signal; certain services may collect location information. See Terms of Service, Privacy Policy, and other details at www.vw.com/carnet. Always pay careful attention to the road, and do not drive while distracted. Automatic Crash Notification may be enabled for up to 6 months without activating a trial or paid subscription; Manual Emergency Call feature and all other VW Car-Net Security & Service features require trial or paid subscription. †Standard text and data rates apply. Do not use feature to locate stolen vehicle. ††Remote door lock available only on model year 2016 and newer vehicles. ‡Refer to your vehicle's warning and indicator lights for the most current diagnostic information. Always consult Owner's Manual for maintenance guidelines. †††See Owner's Manual for further details and important warnings about the keyless ignition feature. Do not leave vehicle unattended with the engine running, particularly in enclosed spaces.



Never a dull moment,
minute, or second.

Golf Wolfsburg shown in Silk Blue Metallic



Maximize your fun. The Golf with its standard turbocharged engine was designed to complement your fast-paced life. A rigid chassis combined with balanced driving dynamics translates into never a dull moment. To complement the handling, the Golf comes with a spirited engine to help you get around the city.

1.8L TSI® engine



170
HORSEPOWER

184
LB-FT OF TORQUE

vw.com/models/golf/section/performance

Golf GTI



In terms of driving prowess, versatility, and pure unadulterated style, the Golf GTI truly stands out. Turbocharged horsepower and torque (achieved with premium fuel) and a sport-tuned suspension add to its allure. From cobblestone to concrete, the Golf GTI really brings it.* May the road stretch out before you.

Power has met its hatch.



Golf GTI Autobahn shown in Carbon Steel Gray Metallic

Raw power. Fully cooked.



Golf GTI S shown in Pure White

When it comes to its looks and performance, the Golf GTI is as distinctive as it is refined. Let's start with what's under the hood: a 2.0L TSI engine delivers turbocharged performance and plenty of torque. Its aggressive stance, fast roofline, and 18" alloy wheels give the Golf GTI unmistakable style. It's flash, with a whole lot of substance.



210

HP WITH PREMIUM FUEL

258

LB-FT OF TORQUE
WITH PREMIUM FUEL

FEATURES

- Sport suspension
- Performance Monitor
- Driving Mode Selection
- Progressive power steering with variable assistance
- Cross Differential System XDS+®
- 18" alloy wheels

AVAILABLE FEATURES

- DCC® Dynamic Chassis Control
- Bi-Xenon headlights with Adaptive Front-lighting System (AFS) and LED Daytime Running Lights (DRL)
- 220 hp (achieved with premium fuel) on Sport, SE, Autobahn





Golf GTI shown in Clark Plaid cloth

High-tech street smarts.

Words alone won't do this justice. Because with the Golf GTI, high performance and high style combine to create a unique driving experience. The Top Sport seats are expertly designed, and the instrumentation is handsome to view and seamless to use. Everywhere you look — from the Clark Plaid seating surfaces to the leather-wrapped, multi-function sport steering wheel — you'll see the Golf GTI is engineered to get a reaction out of you and the cars you pass.

FEATURES

- Clark Plaid seating surfaces
- Top Sport seats
- Leather-wrapped, multi-function sport steering wheel
- Adjustable cargo floor
- Color multi-function trip computer
- Composition Media touchscreen sound system
- Rearview Camera System integrated in badge
- Bluetooth technology with audio streaming for compatible devices
- VW Car-Net[®] connected car suite
- VW Car-Net App-Connect*

AVAILABLE FEATURES

- Power tilting/sliding panoramic sunroof
- 12-way power driver's seat including power-adjustable lumbar support
- Leather seating surfaces
- Paddle shifters
- Keyless access with push-button start**
- Climatronic[®] dual-zone climate control
- Fender[®] Premium Audio System
- Discover Media touchscreen navigation system



Car and Driver's 10Best Award

The Golf and the Golf GTI have been named two of *Car and Driver's* 2016 10Best Cars. Perennial favorites for 10 years running. Now that's a nice pat on the hatchback.



*Always pay careful attention to the road, and do not drive while distracted. App-Connect features require compatible device, operating system, and mobile app. Standard text and data usage rates apply. See mobile device and app provider for terms and privacy. Android Auto is a trademark of Google Inc. Apple CarPlay is a trademark of Apple Inc. MirrorLink is a registered trademark of the Car Connectivity Consortium LLC. **See Owner's Manual for further details and important warnings about the keyless ignition feature. Do not leave vehicle unattended with the engine running, particularly in enclosed spaces.

Golf R



Take thrill, add fun, and then multiply it by handling and horsepower. In the Golf R, everything adds up to a driving experience that's nothing short of spine-tingling. We started with the already legendary Golf and then told our engineers to ramp up its handling and performance. Everything in the Golf R is dialed up. It creates a total package that's expertly crafted, sophisticated, and technologically advanced.

The perfect formula for performance.



Golf R with DCC and Navigation shown in Lapiz Blue Metallic



Has a track record of breaking them.*

Golf R with DCC and Navigation shown in Lapiz Blue Metallic

*Always obey local speed and traffic laws.

The Golf R is further proof that with incredible horsepower, amped-up torque, a sport-tuned suspension, and a quad tip exhaust, the Golf R can get you to where you're going with remarkable precision. It's driven by a bold attitude. And now by you.

FEATURES

- 292-hp, 2.0L TSI turbocharged 4-cylinder engine
- Performance Monitor
- Driving Mode Selection
- 4MOTION® all-wheel drive
- Bi-Xenon high-intensity headlights with Adaptive Front-lighting System (AFS) and LED Daytime Running Lights (DRL)
- Quad tip exhaust system
- DCC Dynamic Chassis Control
- 19" Pretoria alloy wheel

AVAILABLE FEATURES

- 6-speed DSG® performance transmission with Tiptronic® and Sport mode
- Steering wheel-mounted paddle shifters

CAR AND DRIVER

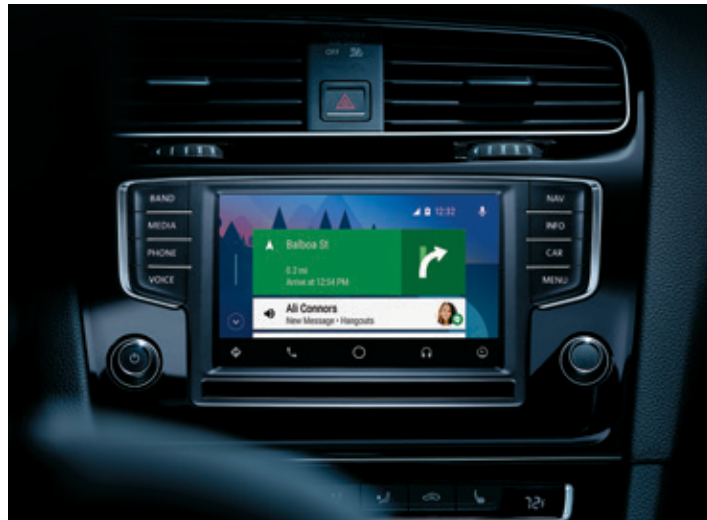
Car and Driver's 10Best Award

The Golf R has been named one of *Car and Driver's* 2016 10Best Cars. With its stunning performance and stylish refinement, the Golf R finds its place above the fray. That's a nice pat on the hatchback.



Technology has never moved so fast.

The Golf R is an overachiever in the cabin as well. At your fingertips is a full suite of connectivity, from complete compatible smartphone integration with Volkswagen Car-Net App-Connect* to the Fender Premium Audio System. Top Sport seats complete the performance picture and are the perfect place for you to enjoy all that horsepower.** It's time to put compromise firmly in the rearview mirror.



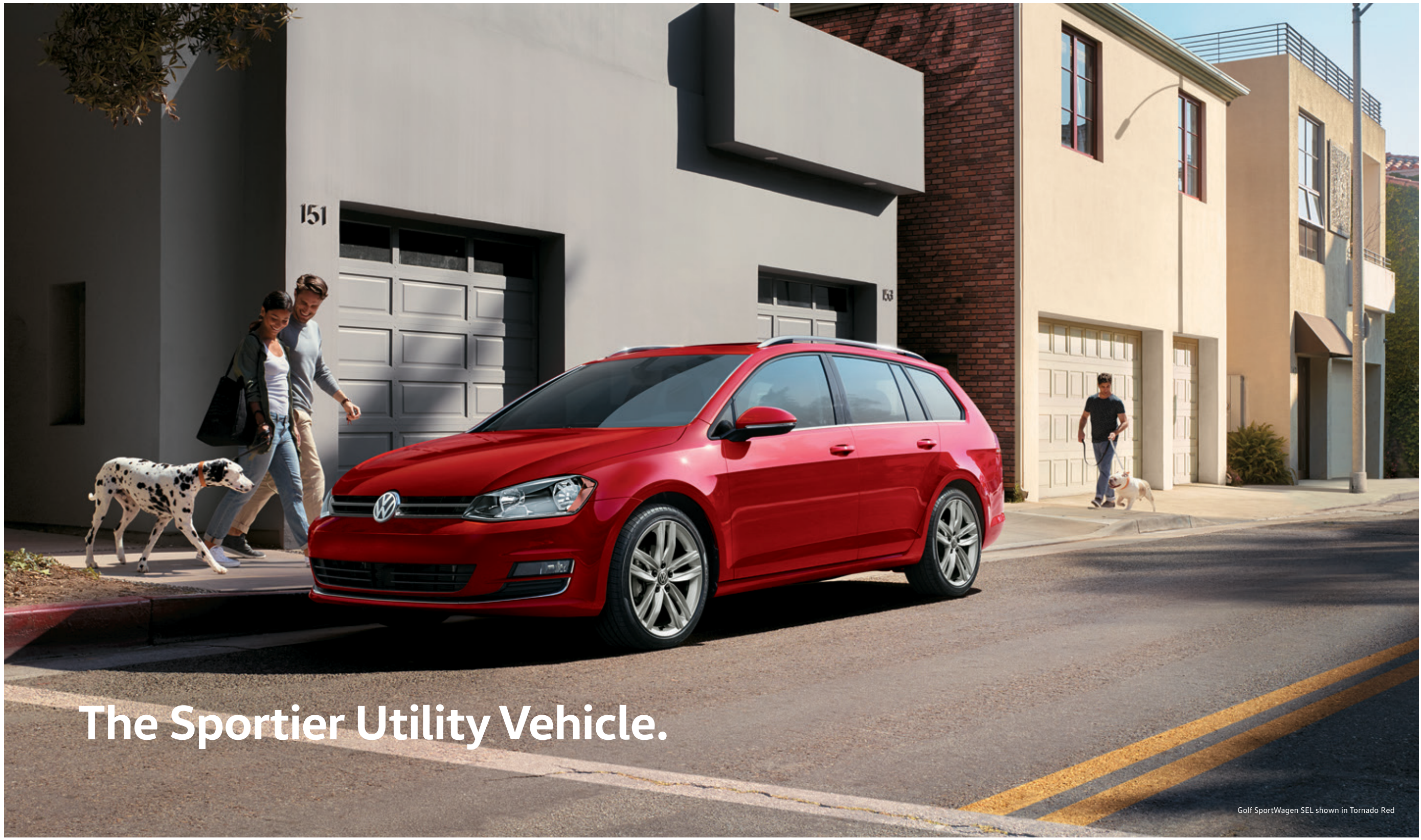
FEATURES

- Top Sport seats
- 12-way power-adjustable driver's seat
- Leather-wrapped, multi-function sport steering wheel
- Performance Monitor
- Discover Media touchscreen navigation system with proximity sensor
- Fender Premium Audio System
- Volkswagen Car-Net App-Connect*

- Volkswagen Car-Net Security & Service with 3-month trial subscription[†]
- Volkswagen Car-Net Guide & Inform with 3-month trial subscription^{††}
- Bluetooth technology with audio streaming for compatible devices

Golf R with DCC and Navigation shown in Titan Black leather

*Always pay careful attention to the road, and do not drive while distracted. App-Connect features require compatible device, operating system, and mobile app. Standard text and data usage rates apply. See mobile device and app provider for terms and privacy. Android Auto is a trademark of Google Inc. Apple CarPlay is a trademark of Apple Inc. MirrorLink is a registered trademark of the Car Connectivity Consortium LLC. **Always obey local speed and traffic laws. †Verizon Telematics, Inc., is service provider of VW Car-Net Security & Service. Available on select models. Trial or paid subscription required. VW Car-Net Security & Service services require vehicle cellular connectivity and availability of vehicle GPS signal; certain services may collect location information. See Terms of Service, Privacy Policy, and other details at www.vw.com/carnet. Always pay careful attention to the road, and do not drive while distracted. ††Always pay careful attention to the road, and do not drive while distracted. SiriusXM audio and data services each require a subscription sold separately, or as a package, by Sirius XM Radio Inc. If you decide to continue service after your trial, the subscription plan you choose will automatically renew thereafter and you will be charged according to your chosen payment method at then-current rates. Fees and taxes apply. To cancel, you must call SiriusXM at 1-866-635-2349. See SiriusXM Customer Agreement for complete terms at www.siriusxm.com. All fees and programming subject to change. Sirius, XM, and all related marks and logos are trademarks of SiriusXM Radio Inc.



The Sportier Utility Vehicle.

Golf SportWagen SEL shown in Tornado Red

Golf SportWagen



Multitasking made fun. Sure, the Golf SportWagen is versatile, and it's still a blast to drive. But it can also hold the road with clarity and poise that have to be experienced to be believed. And it comes with a little something extra under the hood — a turbocharged engine. It's the wagon that really hauls.*

*Always obey local speed and traffic laws.

You can't forget the unfettered joy of your first red wagon. So we updated ours with a sporty look, available 4MOTION all-wheel drive, and a rear spoiler. Then we added a turbocharged engine under the hood to make sure every drive is a fun one. You won't be able to wait for your first drive home. The longest way you know.



FEATURES

- 1.8L turbocharged, direct injection engine
- Roof rails
- Rear spoiler

AVAILABLE FEATURES

- 6-speed automatic transmission with Sport mode and Tiptronic
- 18" alloy wheels
- Integrated front foglights

1.8L TSI engine



170

HORSEPOWER

184

LB-FT OF TORQUE

4MOTION all-wheel drive

With this available all-wheel-drive system in place, your Golf SportWagen can help you navigate a variety of road conditions. When the system senses that the wheels aren't rotating equally, it can deliver more torque to the wheels with traction for improved grip, handling, and more peace of mind.

vw.com/models/golf-sportwagen/section/performance



Just like your little red wagon.
Only horsepowered.

Golf SportWagen SEL shown in Tornado Red



Live well. Haul large.

The Golf SportWagen has plenty of spirit. Its driver-focused interior now features an even more comfortable place from which to enjoy the show. And on days when there's work to be done, the 66.5 cu.ft. of cargo space comes in handy. Just fold down the 60/40-split rear seats and say hello to all that room.

FEATURES

- Driver-focused interior
- Folding rear seats with release levers in cargo area
- Leather-wrapped, multi-function steering wheel
- Bluetooth technology with audio streaming for compatible devices
- Composition Media touchscreen sound system
- Rearview Camera System integrated in badge

AVAILABLE FEATURES

- Power tilting/sliding panoramic sunroof
- V-Tex leatherette seating surfaces
- 12-way power driver's seat with power-adjustable lumbar support
- Interior ambient lighting
- Climatronic dual-zone climate control
- Discover Media touchscreen navigation system
- Keyless access with push-button start*
- Fender Premium Audio System

Volkswagen Car-Net Guide & Inform**

Easy access to gas prices, weather, sports scores, and more is available through SiriusXM Travel Link®, while SiriusXM® Traffic offers real-time traffic information. Get your info front and center with a 3-month trial subscription to both.

Volkswagen Car-Net Security & Service†

With your 3-month trial and then paid subscription, you can enjoy a host of available features that help you locate your last parked location,† check if the doors are locked,‡ call for help in an emergency,† and even get vehicle health and diagnostic reports.§

Volkswagen Car-Net App-Connect§§

VW Car-Net App-Connect lets you use select apps from your compatible smartphone right on your touchscreen display.



Golf SportWagen SEL shown in Titan Black V-Tex leatherette

*See Owner's Manual for further details and important warnings about the keyless ignition feature. Do not leave vehicle unattended with the engine running, particularly in enclosed spaces. **Always pay careful attention to the road, and do not drive while distracted. SiriusXM audio and data services each require a subscription sold separately, or as a package, by Sirius XM Radio Inc. If you decide to continue service after your trial, the subscription plan you choose will automatically renew thereafter and you will be charged according to your chosen payment method at then-current rates. Fees and taxes apply. To cancel you must call SiriusXM at 1-866-635-2349. See SiriusXM Customer Agreement for complete terms at www.siriusxm.com. All fees and programming subject to change. Sirius, XM, and all related marks and logos are trademarks of Sirius XM Radio Inc. †Verizon Telematics, Inc., is service provider of VW Car-Net Security & Service. Trial or paid subscription required. VW Car-Net Security & Service services require vehicle cellular connectivity and availability of vehicle GPS signal; certain services may collect location information. See Terms of Service, Privacy Policy, and other details at www.vw.com/carnet. Always pay careful attention to the road, and do not drive while distracted. ††Standard text and data rates apply. Do not use feature to locate stolen vehicle. †‡Remote door lock available only on model year 2016 and newer vehicles. †††Automatic Crash Notification may be enabled for up to 6 months without activating a trial or paid subscription; Manual Emergency Call feature and all other VW Car-Net Security & Service features require trial or paid subscription. ††††Refer to your vehicle's warning and indicator lights for the most current diagnostic information. Always consult Owner's Manual for maintenance guidelines. †††††Always pay careful attention to the road, and do not drive while distracted. Not all features available on all operating systems. Standard text and data usage rates apply. App-Connect features require compatible device, operating system, and mobile apps. See mobile device and app providers for terms and privacy.

Years of engineering with split-second benefits.

No matter how impressive your reflexes are, the Golf can react faster. Whether it's watching your blind spot, the lane you're in, or helping you park, the available Driver Assistance features quickly help keep you out of trouble.* At the end of the day, knowing it has your back gives you more confidence on every drive.



1 Lane Departure Warning (Lane Assist)*

When moving, the Lane Departure Warning (Lane Assist) can sense if you start to drift into another lane without using the turn signal. It will help steer to help keep you in the correct lane.* (Available on Golf R)



2 Forward Collision Warning and Autonomous Emergency Braking (Front Assist)*

The Forward Collision Warning system (included in Front Assist) has a sensor in the front to help monitor traffic and can alert you to a potential collision. If a collision is imminent, Autonomous Emergency Braking (included in Front Assist) can help brake the car.* (Available on Golf, Golf GTI, Golf R, Golf SportWagen)



3 Adaptive Cruise Control (ACC)*

The Adaptive Cruise Control (ACC) helps maintain a relative distance from the car in front of you. If the car in front of you speeds up or slows down, the sensors detect the change and your car follows suit.* (Available on Golf GTI, Golf R, Golf SportWagen)



4 Blind Spot Monitor*

The sensors on the Blind Spot Monitor feature are able to sense what you might miss. When driving, if you attempt to change lanes, the Blind Spot Monitor can help alert you to other cars that may be in your blind spot.* (Available on Golf, Golf GTI, Golf R, Golf SportWagen)



5 Rear Traffic Alert*

The Rear Traffic Alert comes in handy when you're backing up. It has sensors that can alert you to vehicles crossing in your path when in reverse and even brake for you if needed.* (Available on Golf, Golf GTI, Golf R, Golf SportWagen)

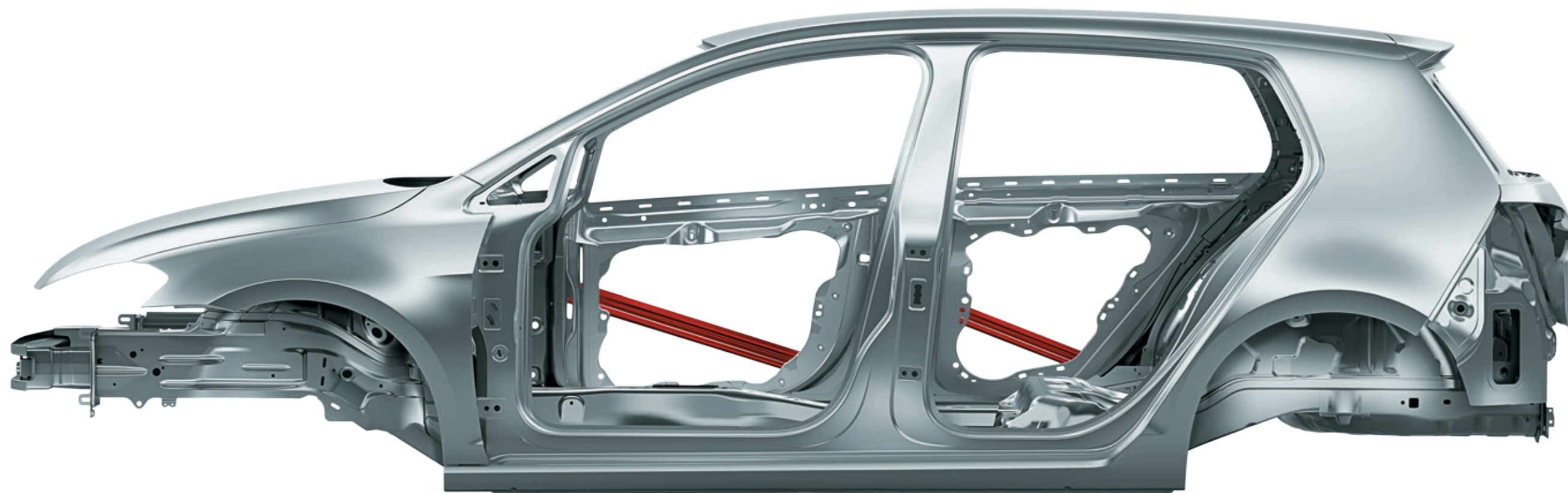


6 Park Distance Control (Park Pilot)*

The Park Distance Control (Park Pilot) has sensors that help you back out of or drive into a parking spot. Audible signals and the optical parking system on the display indicate how much space you have behind and in front of you when parking. If you get too close, an alert sounds as a warning. The display provides additional support for the driver by showing the position of obstacles.* (Available on Golf R)

We can't predict. But we can engineer.

Accidents seem to happen when you least expect them. That's why we do everything we can to prepare for them in the engineering process. It starts with protective safety cage construction that provides rigidity with strategically placed front and rear crumple zones. Plus, with active and passive safety features, it's easy to see what matters to us.



2016 IIHS TOP SAFETY PICK+

IIHS Top Safety Pick+ Rating

The prestigious Insurance Institute for Highway Safety has deemed the 2016 Golf 4-door, Golf GTI 4-door, and Golf SportWagen worthy of a Top Safety Pick+ rating when equipped with the available Driver Assistance feature of Front Assist.* This has us positively thrilled.



NHTSA 5-Star Safety Rating

The 2016 Golf, Golf GTI, Golf R, and Golf SportWagen have all earned a 5-star overall safety rating from the National Highway Traffic Safety Administration (NHTSA).** That's four models that get a high-five for high performance.

Intelligent Crash Response System (ICRS)[†]

In the event of a collision that deploys the airbags,^{††} the ICRS can turn off the fuel pump, unlock the doors, and activate the hazard lights. It helps react if you might not be able to.

Seven stability-enhancing systems

From Electronic Brake-pressure Distribution (EBD), which helps maintain appropriate stopping power during a hard-braking situation, to Electronic Stability Control (ESC), which can adjust engine throttle and apply corrective forces to the wheels that need them most, there are in total seven stability-enhancing systems at your service.

Automatic Post-Collision Braking System

Not every collision brings a car to stop. That's why our vehicles include the Automatic Post-Collision Braking System. It can help bring your car to a stop after a collision, helping reduce the chance of additional impacts.[‡]

Tire Pressure Monitoring System (TPMS)

Monitoring and maintaining proper air pressure in your tires helps with efficiency^{†††} and safety. The TPMS helps alert you to a loss of tire pressure so you can know when to add air.

*2016 IIHS "Top Safety Pick+" based on good ratings in the moderate overlap front, small overlap front, side, roof strength and head restraint tests, plus no less than an advanced rating for front crash prevention. **Government 5-Star Safety Ratings are part of the National Highway Traffic Safety Administration's (NHTSA's) New Car Assessment Program (www.SaferCar.gov).[†] The Intelligent Crash Response System (ICRS) will only activate in a collision where the airbags deploy or safety belt pretensioners activate. Not all collisions cause airbags to deploy or safety belt pretensioners to activate. ^{††}Airbags are supplemental restraints only and will not deploy under all crash circumstances. Always use safety belts and seat children only in the rear, using restraint systems appropriate for their size and age. [‡]The features discussed are designed to help mitigate the effects of certain collisions and are not a substitute for attentive driving. Please see Owner's Manual for further details, and important limitations. ^{†††}25 city/36 highway mpg (2017 Golf 1.8L, 5-speed manual transmission). EPA estimates. Your mileage will vary and depends on several factors, including your driving habits and vehicle condition.

Golf SportWagen Specs



EXTERIOR	S	SE	SEL
Automatic headlights	–	●	●
Halogen reflector lens foglights	–	●	●
Power-operated, heated side mirrors with integrated turn signals	●	●	●
Black roof rails	●	●	–
Silver roof rails	–	–	●
Power tilting/sliding panoramic sunroof	–	●	●
Heated windshield washer nozzles	4MO	●	●
PERFORMANCE	S	SE	SEL
1.8L TSI [®] , 16-valve, DOHC, in-line 4-cylinder turbocharged engine with direct injection and intercooler; 170 hp, 184 lb-ft of torque (199 lb-ft of torque with available automatic trans.)	●	●	●
4MOTION [®] all-wheel-drive system	4MO	–	–
Electromechanical power steering with variable assistance and active return	●	●	●
4-corner independent suspension	●	●	●
5-speed manual transmission	●	–	–
6-speed automatic transmission with Tiptronic [®] and Sport mode	○	●	●
6-speed manual transmission	4MO	–	–
6-speed DSG [®] automatic transmission with Tiptronic and Sport mode	○, 4MO	–	–
INTERIOR	S	SE	SEL
Climatic manual single-zone climate control with pollen filter	●	●	–
Climatronic [®] dual-zone automatic climate control	–	–	●
Interior ambient lighting	–	–	●
Front center armrest, adjustable	●	●	●
Multi-function trip computer	●	●	●
Driver and passenger visor vanity mirrors, illuminated and with covers	●	●	●
6-way partial power-adjustable front seats with adjustable lumbar support	●	●	–
12-way power-adjustable driver's seat; partial power-adjustable front passenger seat	–	–	●
Heated front seats	4MO	●	●
60/40-split folding rear seat with center armrest, pass-through, and release levers in cargo area	●	●	●
Leather-wrapped, multi-function steering wheel	●	●	●
Leather-wrapped gearshift knob	●	●	●
115V power outlet in cargo area	–	●	●
Glovebox with cooling feature	●	●	●
Cloth seating surfaces	●	–	–
V-Tex leatherette seating surfaces	–	●	–
Comfort sport seats with V-Tex sport leatherette seating surfaces	–	–	●
Storage compartment under driver's seat	●	●	–
Power windows with pinch protection and automatic 1-touch feature, operable on all doors	●	●	●
TECHNOLOGY	S	SE	SEL
Composition Media touchscreen sound system with proximity sensor	●	●	–
Discover Media touchscreen navigation system with proximity sensor	–	–	●
Volkswagen Car-Net [®] App-Connect*	●	●	●
Volkswagen Car-Net Guide & Inform with 3-month SiriusXM [®] Traffic trial subscription and 3-month SiriusXM Travel Link [®] trial subscription**	–	–	●

- Standard, at no additional cost
- Not available
- Optional, additional cost
- 4MO** S 4MOTION model

TECHNOLOGY CONT.	S	SE	SEL
Volkswagen Car-Net Security & Service with 3-month trial subscription ¹	●	●	●
SiriusXM Satellite Radio with 3-month trial subscription**	●	●	●
USB port	●	●	●
Bluetooth [®] technology with audio streaming for compatible devices	●	●	●
Fender [®] Premium Audio System with 9 speakers including subwoofer	–	●	●
Keyless access with push-button start ¹¹	–	●	●
Rearview Camera System	●	●	●
Adaptive Cruise Control (ACC) ¹²	–	–	●
Forward Collision Warning and Autonomous Emergency Braking (Front Assist) ¹	–	–	●
Blind Spot Monitor and Rear Traffic Alert ¹	–	–	●

SAFETY	S	SE	SEL
Crash-optimized front end	●	●	●
Immobilizer theft-deterrent system	●	●	●
Automatic locking feature (doors lock when vehicle reaches 8 mph)	●	●	●
Child-safety rear door locks	●	●	●
Driver and passenger front and side thorax airbag supplemental restraint system ¹⁴	●	●	●
Side Curtain Protection [®] airbags, front and rear ¹⁵	●	●	●
3-point safety belts for all seating positions; includes safety belt pretensioners for driver and front passenger	●	●	●
LATCH (Lower Anchors and Tethers for CHildren) child seat anchor points	●	●	●
Electronic Stability Control (ESC), Anti-Slip Regulation (ASR), Electronic Differential Lock (EDL), and Engine Braking Assist (EBA)	●	●	●
Anti-lock Braking System (ABS), Electronic Brake-pressure Distribution (EBD), and Hydraulic Brake Assist (HBA)	●	●	●
Automatic Post-Collision Braking System	●	●	●
Intelligent Crash Response System (ICRS) ¹⁶	●	●	●
Tire Pressure Monitoring System	●	●	●

QUALITY	S	SE	SEL
12-year/120,000-mile (whichever occurs first) Limited Warranty Against Corrosion Perforation ¹⁸	●	●	●
5-year/60,000-mile (whichever occurs first) Powertrain Limited Warranty ¹⁹	●	●	●
3-year/36,000-mile (whichever occurs first) New Vehicle Limited Warranty ¹⁹	●	●	●
3-year/36,000-mile (whichever occurs first) Roadside Assistance ⁹	●	●	●

DIMENSIONS	S	SE	SEL
Wheelbase	103.5 in. (2,630 mm)		
Length	179.6 in. (4,562 mm)		
Width	70.8 in. (1,799 mm)		
Height	57.6 in. (1,462 mm)		
Cargo volume	30.4 cu. ft. (0.9 cu. m)		
Cargo volume with rear seat folded down	66.5 cu. ft. (1.9 cu. m)		

Golf R Specs



PERFORMANCE	S	SE	SEL
2.0L TSI, 16-valve, DOHC, in-line 4-cylinder turbocharged engine with intercooler and FSI [®] direct fuel injection; 292 hp, 280 lb-ft of torque	●	●	●
4MOTION all-wheel drive	●	●	●
Vented front (13.4 in) and rear (12.2 in) brake rotors and front calipers with R logo	●	●	●
Electromechanical progressive power steering system	–	●	●
XDS [®] + Cross Differential System	–	●	●
Performance Monitor and Driving Mode Selection	●	●	●
DCC [®] Dynamic Chassis Control	–	–	●
6-speed manual transmission	–	–	●
6-speed DSG [®] automatic transmission with Tiptronic [®] and Sport mode	–	–	●
3-mode Electronic Stability Control	–	–	●

INTERIOR	S	SE	SEL
Climatronic dual-zone automatic climate control with pollen filter and rear passenger ventilation	●	●	●
Color multi-function trip computer	●	●	●
Heated front seats	●	●	●
Top Sport seats with R design leather seating surfaces	●	●	●
12-way power-adjustable driver's seat including adjustable lumbar support	●	●	●
Leather-wrapped, multi-function sport steering wheel	●	●	●
Illuminated blue door sills and interior ambient lighting	●	●	●

TECHNOLOGY	S	SE	SEL
Discover media touchscreen navigation system with proximity sensor	●	●	●
Fender Premium Audio System	●	●	●
SiriusXM Satellite Radio with 3-month trial subscription**	●	●	●
Bluetooth technology with audio streaming for compatible devices	●	●	●
Volkswagen Car-Net App-Connect*	●	●	●
VW Car-Net Guide & Inform with 3-month SiriusXM Traffic trial subscription and 3-month SiriusXM Travel Link trial subscription**	●	●	●
VW Car-Net Security & Service with 3-month trial subscription ¹	●	●	●
Rearview Camera System	●	●	●
Keyless access with push-button start ¹¹	●	●	●
Adaptive Cruise Control (ACC) ¹²	●	●	●
Forward Collision Warning and Autonomous Emergency Braking (Front Assist) ¹	●	●	●
Blind Spot Monitor and Rear Traffic Alert ¹	●	●	●
Park Distance Control (Park Pilot)	●	●	●
Lane Departure Warning (Lane Assist) ¹	●	●	●

*Always pay careful attention to the road, and do not drive while distracted. Not all features available on all operating systems. Standard text and data usage rates apply. App-Connect features require compatible device, operating system, and mobile apps. See mobile device and app providers for terms and privacy. **Always pay careful attention to the road, and do not drive while distracted. SiriusXM audio and data services each require a subscription sold separately or as a package by Sirius XM Radio Inc. If you decide to continue service after your trial, the subscription plan you choose will automatically renew thereafter and you will be charged according to your chosen payment method at then-current rates. Fees and taxes apply. To cancel, you must call SiriusXM at 1-866-635-2349. See SiriusXM Customer Agreement for complete terms at www.siriusxm.com. All fees and programming subject to change. Sirius, XM, and all related marks and logos are trademarks of SiriusXM Radio Inc. ¹Verizon Telematics, Inc., is service provider of VW Car-Net Security & Service. Available on select models. Trial or paid subscription required. VW Car-Net Security & Service services require vehicle cellular connectivity and availability of vehicle GPS signal; certain services may collect location information. See Terms of Service, Privacy Policy, and other details at www.vw.com/carnet. Always pay careful attention to the road, and do not drive while distracted. ¹¹See Owner's Manual for further details and important warnings about the keyless ignition feature. Do not leave vehicle unattended with the engine running, particularly in enclosed spaces. ¹²The features discussed are not substitutes for attentive driving. See Owner's Manual for further details, and important limitations. ¹⁴Airbags are supplemental restraints only and will not deploy under all crash circumstances. Always use safety belts and seat children only in the rear, using restraint systems appropriate for their size and age. ⁹The Intelligent Crash Response System (ICRS) will only activate in a collision where the airbags deploy or safety belt pretensioners activate. Not all collisions cause airbags to deploy or safety belt pretensioners to activate. ¹⁸See dealer or warranty booklet for details; some restrictions apply. ⁹Roadside Assistance provided by Allstate.

- Standard, at no additional cost
- Optional, additional cost

w/DCC & NAV	EXTERIOR	w/DCC & NAV
●	Automatic Bi-Xenon high-intensity headlights with LED Daytime Running Lights (DRL) and Adaptive Front-lighting System (AFS)	●
●	R design front grille, bumpers, and side skirts	●
●	Quad tip exhaust system	●
●	Rain-sensing windshield wipers	●
●	Heated windshield washer nozzles	●
w/DCC & NAV	SAFETY	w/DCC & NAV
●	Crash-optimized front end	●
●	Immobilizer theft-deterrent system	●
●	Automatic locking feature (doors lock when vehicle reaches 8 mph)	●
●	Child-safety rear door locks	●
●	Driver and passenger front and side thorax airbag supplemental restraint system ¹⁴	●
●	Side Curtain Protection airbags, front and rear ¹⁵	●
●	3-point safety belts for all seating positions; includes safety belt pretensioners for driver and front passenger	●
●	LATCH (Lower Anchors and Tethers for CHildren) child seat anchor points	●
●	Electronic Stability Control (ESC), Anti-Slip Regulation (ASR), Electronic Differential Lock (EDL), and Engine Braking Assist (EBA)	●
●	Anti-lock Braking System (ABS), Electronic Brake-pressure Distribution (EBD), and Hydraulic Brake Assist (HBA)	●
●	Automatic Post-Collision Braking System	●
●	Intelligent Crash Response System (ICRS) ¹⁶	●
●	Tire Pressure Monitoring System	●

w/DCC & NAV	QUALITY	w/DCC & NAV
●	12-year/120,000-mile (whichever occurs first) Limited Warranty Against Corrosion Perforation ¹⁸	●
●	5-year/60,000-mile (whichever occurs first) Powertrain Limited Warranty ¹⁹	●
●	3-year/36,000-mile (whichever occurs first) New Vehicle Limited Warranty ¹⁹	●
●	3-year/36,000-mile (whichever occurs first) Roadside Assistance ⁹	●

w/DCC & NAV	DIMENSIONS	w/DCC & NAV
●	Wheelbase	103.5 in. (2,630 mm)
●	Length	168.4 in. (4,276 mm)
●	Width	70.8 in. (1,799 mm)
●	Height	56.5 in. (1,436 mm)
●	Cargo volume (with parcel shelf removed)	22.8 cu ft (0.58 cu. m)
●	Cargo volume (with rear seats folded down)	52.7 cu. ft. (1.34 cu. m)

Wheels

GOLF



15" Lyon



16" Dover

GOLF GTI



18" Austin



18" Nogaro

GOLF SPORTWAGEN



15" Lyon



16" Toronto



17" Dijon



18" Durban

GOLF R

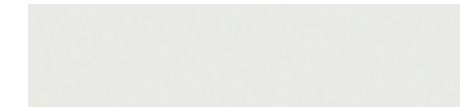


19" Pretoria

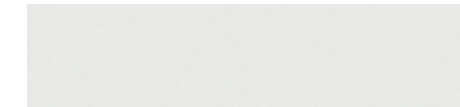
Colors

EXTERIOR COLORS

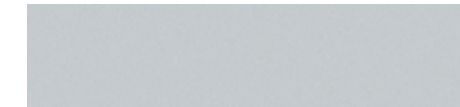
Golf
 Golf GTI
 Golf SportWagen
 Golf R



Pure White



Oryx White



Reflex Silver Metallic



Tungsten Silver Metallic



Tornado Red



Silk Blue Metallic



Night Blue Metallic



Lapiz Blue Metallic



Limestone Gray Metallic



Platinum Gray Metallic



Carbon Steel Gray Metallic

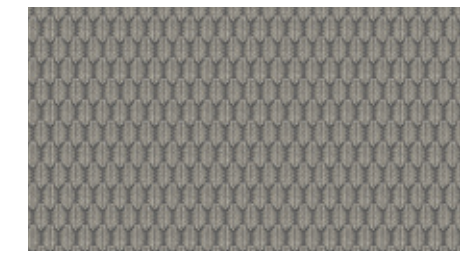


Deep Black Pearl



Black

INTERIOR CLOTH



Beige



Titan Black



Clark Plaid

Not all combinations of exterior paint and interior seating surfaces are available.

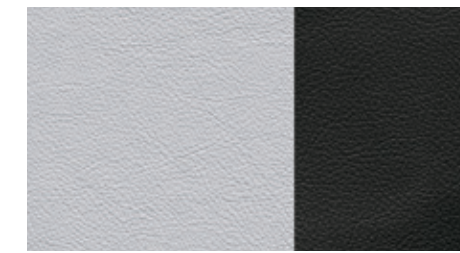
INTERIOR V-TEX LEATHERETTE



Beige



Titan Black



Quartz and Titan Black Two-Tone



Titan Black

INTERIOR LEATHER



Titan Black



Volkswagen

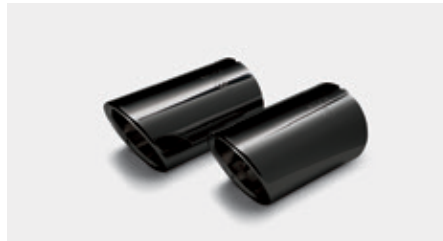
Add more Volkswagen to your Volkswagen.

Specifically designed and created to fit your Volkswagen model, this diverse lineup of accessories lets you customize your Volkswagen to fit your lifestyle. Whether you're prepping for an outdoor adventure or exploring a more urban landscape, these accessories offer the sophisticated style and craftsmanship you've come to expect from Volkswagen.

ACCESSORIES



Base Carrier Bars and Surfboard Holder



Black Exhaust Tips



License Plate Frames



Monster Mats[®] and MojoMats[®]



MuddyBuddy[™] Cargo Liner and CARGOTECH[®] Blocks



Rear Bumper Protection Plate



Satin Silver Mirror Caps



Soundbox

Genuine Volkswagen Accessories installed by an authorized Volkswagen dealer are covered for the greater of: (1) the accessory limited warranty period (12 months or 12,000 miles, whichever occurs first) from the time of purchase; or (2) the remainder of the New Vehicle Limited Warranty period (3 years or 36,000 miles, whichever occurs first). See dealer for details. The following accessories are covered under separate manufacturer limited warranties: MuddyBuddy[™] Trunk Liners by WeatherTech[®] are covered by a WeatherTech limited warranty for three years from date of purchase. Visit www.weathertech.com for details.

©2016 Volkswagen Group of America, Inc. Printed in the USA. Volkswagen of America, Inc., believes the information and specifications in this brochure to be correct at the time of printing. Specifications, standard features, options, fabrics, and colors are subject to change without notice. Some features may be unavailable when your vehicle is built. Some vehicles are pictured with options that may be available at extra cost or may not be available on some models. Ask your dealer about the availability of options and verify that the vehicle you select includes the equipment you ordered. Tires are supplied and warranted by their manufacturer. "Volkswagen," the Volkswagen logo, "Climatronic," "4MOTION," and "Golf" are registered trademarks of Volkswagen AG. "Monster Mats" is a registered trademark of Volkswagen Group of America, Inc. "FSI" is a registered trademark of Audi AG. "Bluetooth" is a registered trademark of Bluetooth SIG, Inc. "MuddyBuddy" is a registered trademark of MacNeil Automotive Products Limited. Volkswagen navigation depends on the signals from the worldwide Global Positioning Satellite network. The vehicle's electrical system, and existing wireless and satellite technologies, must be available and operating properly for the system to function. The system is designed to provide you with suggested routes to location addresses, destinations, and other points of interest. Changes in street names, construction zones, traffic flow, points of interest, and other road system changes are beyond the control of Volkswagen of America, Inc. Complete detailed mapping of lanes, roads, streets, toll roads, highways, etc., is not possible, therefore you may encounter discrepancies between the mapping and your actual location. Please rely on your individual judgment in determining whether or not to follow a suggested navigation route. Periodically, the mapping is updated and an update will be required in order to maintain the latest navigation information available to us. Updates will be available for purchase from time to time at additional cost.

For further information regarding any Volkswagen model, please call 1-800-DRIVE-VW or just look us up at vw.com. WW17GOLFSBUS