

GIVE IT EVERYTHING



2020

TELLURIDE



“THE WORLD IS A BOOK,  
AND THOSE WHO DO NOT TRAVEL  
READ ONLY A PAGE.”

— Saint Augustine

DEALER ePROCESS

Part #: UU200 PM001



YOU WILL FIND THEM IN EVERY CORNER OF OUR COUNTRY. EVERYDAY PEOPLE WHO REFUSE TO LIVE BY HALF MEASURES. THE ONES WHO GO ALL IN — NOT FOR FAME OR GLORY, BUT BECAUSE THEY JUST LOVE DOING WHAT THEY DO. THEY GIVE IT EVERYTHING, AND INSPIRE US TO DO THE SAME. IN THIS SPIRIT, WE CREATED THE 2020 TELLURIDE, AN ALL-NEW SUV DESIGNED WITH GUTS AND GRACE, ASSEMBLED IN AMERICA,<sup>†</sup> AND EQUIPPED TO LET YOU PURSUE WHAT THRILLS YOU — ON ANY ROAD YOU CHOOSE.

<sup>†</sup>Telluride is assembled in the United States from U.S. and foreign parts. SX WITH PRESTIGE PACKAGE SHOWN

  
DEALER ePROCESS



THE ORIGINAL THRILL-SEEKERS:  
TELLURIDE’S FIRST MINERS.

In 1875, a prospector named John Fallon staked the first claim in Telluride’s remote gold- and silver-filled mountains. As word spread, adventurous fortune-seekers flocked to the area from every direction — braving an arduous journey over rough terrain, bushwhacked trails, and the sky-high elevations of the Colorado Rockies — in a rush to reach the “City of Gold” and stake claims of their own. Telluride was soon a mining boomtown, bringing thrilling possibilities to this new, rugged, thriving community of spirited individuals. Over the next century, Telluride rode the many waves of booms and busts, and it occurred to some savvy residents that their mountain town was home to another sort of gold mine — “white gold,” in the form of incredible snow. It’s no surprise then that when mining ceased for good in the 1970s, the community rallied to transform Telluride into a world-class ski resort — ushering in a new legacy of adventure.



TELLURIDE, CO

*Lore has it that Telluride got its name from the mineral tellurium, a non-metallic element associated with mineral deposits of gold that were found in Colorado’s precious metal-filled mountains. Today, Telluride is best known for its “white gold” — snow — making it perfect for those who love adventure, and to enjoy in an all-new Kia Telluride.*



WHAT’S YOUR ADVENTURE?

Wherever the road calls you, Telluride is equipped to take you there — whether it’s mountains covered in fresh snow, a remote desert escape, or perhaps more intriguing — no set destination at all. Like its namesake town of today and the legacy of its founding residents, the Kia Telluride is built for thrilling endeavors, rugged conditions, and an innate pull toward the exciting — with available Active On-Demand AWD,\* V6 power, advanced technology, and modern luxury.

\*No system, no matter how advanced, can compensate for all driver errors, driving conditions, accidents, and/or injury. Always drive safely and obey all traffic laws. Aftermarket snow tires (sold separately) are recommended for snowy or icy conditions. Always drive safely and use caution. SX SHOWN



## BECAUSE THERE'S A SNOW MODE IN ALL OF US.



When fresh snow beckons, Telluride's available **ACTIVE ON-DEMAND AWD<sup>†</sup>** system is ready for challenging road conditions. The system is designed to actively distribute torque between the front and rear wheels to help improve performance depending on the driving situation, and features two custom modes: **SNOW MODE<sup>†</sup>** is engineered to help reduce wheelspin and give you enhanced control in snow. And **AWD LOCK<sup>†</sup>** mode gives you full-time all-wheel drive at the touch of a button to help conquer sand, mud, and other difficult terrain that dares to stand between you and your destination.

<sup>†</sup>No system, no matter how advanced, can compensate for all driver errors, driving conditions, accidents, and/or injury. Always drive safely and obey all traffic laws. Snow powder added for effect. Aftermarket snow tires (sold separately) are recommended for snowy or icy conditions. Always drive safely and use caution. SX WITH PRESTIGE PACKAGE SHOWN

DEP  
DEALER ePROCESS





#### SELF-LEVELING REAR SUSPENSION\*

is designed to automatically calibrate the weight load of a heavy, uneven payload, and adjust the height accordingly — helping to keep the vehicle level and balanced for better traction and handling

#### TORQUE VECTORING CORNER CONTROL (TVCC)

is designed to increase cornering stability by applying braking force to the rear inside-corner wheel, for more precise turning in a variety of situations†

#### 8-SPEED AUTOMATIC TRANSMISSION

gives you a greater range of gears for seamless acceleration — along with Sportmatic® shifting for a sportier, more engaged driving experience

#### MULTIPLE DRIVE MODES

include a Sport mode that adjusts the settings for powertrain, drivetrain, and steering effort to provide an optimal driving experience

#### ISO-STRUCTURE™ CONSTRUCTION

made from 59% advanced, high-strength steel, is stronger and lighter than regular steel, providing enhanced rigidity, body control, and a quiet ride



## HERE'S WHY THE “S” STANDS FOR SPORT.

While you may not happen upon a racetrack, at some point in your travels you'll likely encounter a nice, curvy road, mountain pass, or wide-open stretch of highway. This is your chance to experience the impressive level of “sport” in this sport utility vehicle,† courtesy of Telluride's **291-HORSEPOWER, 3.8L GASOLINE DIRECT INJECTION (GDI) V6 ENGINE**, ultra-responsive performance, and a host of handling features that have been engineered for a thrilling drive.



\*No system, no matter how advanced, can compensate for all driver errors, driving conditions, accidents, and/or injury. Always drive safely and obey all traffic laws. †Optional feature available only on certain trims. See Features page for availability. SX WITH PRESTIGE PACKAGE SHOWN

DEP  
DEALER ePROCESS





#### ELECTRONIC STABILITY CONTROL (ESC)\*

In difficult driving situations, ESC is designed to help control the engine and brakes for improved directional stability.

#### VEHICLE STABILITY MANAGEMENT (VSM)\*

VSM is designed to intervene to help enhance stability and steering responses when driving on some slippery roads.

#### TRACTION CONTROL SYSTEM (TCS)\*

When TCS senses wheelspin during acceleration, it uses a combination of engine power and brake force to help transfer power to the wheel that has more traction.

#### ELECTRONIC BRAKE-FORCE DISTRIBUTION (EBD)\*

Based on the vehicle's weight distribution, EBD helps adjust the balance of braking power accordingly.

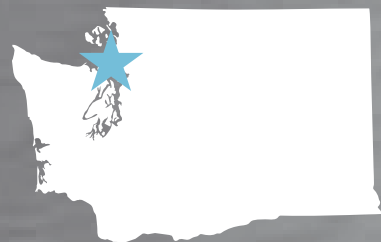


## MADE FOR THOSE MOMENTS WHEN SOMEONE SAYS, “LET’S CHECK IT OUT OVER THERE.”

You can follow your urge to explore with the confidence in knowing that Telluride excelled in **RUGGED CAPABILITY TESTING** at Kia's high-desert proving grounds. Water, grit, temperature extremes, steep roads, choppy roads, slick roads — you name it, Telluride has been subjected to it.

\*No system, no matter how advanced, can compensate for all driver errors, driving conditions, accidents, and/or injury. Always drive safely and obey all traffic laws. SX WITH PRESTIGE PACKAGE SHOWN

DEALER ePROCESS



## FIDALGO ISLAND, WA

*With its pristine lakes and lush forests, it's no wonder Fidalgo Island is home to artisans who appreciate both beautiful surroundings and a well-crafted means in which to explore them — whether it's one of Dan's custom canoes, or behind the wheel of a Telluride.*

## DAN BITTERMAN

Dan Bitterman lives on Fidalgo Island in the scenic, lake-filled Pacific Northwest islands region — the perfect location to pursue his passion of handcrafting gorgeous, glossy, custom cedar-strip performance canoes for his company, Cascadian Canoe Works. With names like “The Shaman” and “The Nomad,” each of Dan's creations is designed to be as much a travel inspiration as a travel mode. Made from hand-selected cedar and painstakingly detailed, Dan describes his canoes as “beautiful pieces of art that are meant to be used.” He is obsessive about his process, his materials, and even the tools he works with. You could say he's the epitome of someone who lives and breathes his craft, because when he's not in his workshop, he's out on a lake, bay, or the Pacific Ocean, paddling toward adventure.

**“MY GOAL IS TO CREATE A BEAUTIFUL PIECE OF ART THAT IS MEANT TO BE USED.”** — Dan Bitterman, Cascadian Canoe Works

**FUNCTIONAL BEAUTY.** Though craftsmanship takes many forms, we can agree it shares a few common traits: a beautiful, intelligent design, quality materials, meticulous attention to detail, and pride in the end result. This was the high bar we set in designing Telluride's cabin. We chose premium seating materials like available **NAPPA LEATHER TRIM\*** and detailed it with padded, double-stitched quilting. Simulated **BRUSHED METAL** accents and **MATTE-FINISHED WOOD TRIM** add modern, elegant ambience. We covered the surrounding surfaces with soft-touch materials, and put it all together in a thoughtfully **ERGONOMIC DESIGN**. The level of craftsmanship is similar to one of Dan's canoes: You can sense it when you see it. You can feel it when you sit inside. And you know it for sure when you experience how it performs.

\*Optional feature available only on certain trims. See Features page for availability. SX WITH PRESTIGE PACKAGE SHOWN





## WHEN YOU'RE TRAVELING HUNDREDS OF MILES, EVERY INCH MATTERS.

More space to stretch out can transform your entire travel experience, so Telluride's ultra-comfortable cabin features **CLASS-LEADING TOTAL LEGROOM**,<sup>†</sup> including impressive legroom in the third row. The cabin is designed with standard **8-PASSENGER SEATING**, or if you prefer, available 7-passenger seating with reclining second-row captain chairs.\* Plus **RECLINING SEATBACKS** in the third row for added relaxation on long rides.

<sup>†</sup>Legroom comparison based on 2019 and available 2020 midsize SUVs as of April 2019. \*Optional feature available only on certain trims. See Features page for availability. Simulated screen shown. SX WITH PRESTIGE PACKAGE SHOWN

**12-WAY POWER MEMORY DRIVER'S SEAT\***  
lets you customize and set the perfect seating position for two drivers, and includes power seat-extension settings for additional thigh support

**HEATED & VENTILATED FRONT- & 2ND-ROW SEATS\***  
provide that perfect boost of warmth or cooling, with three modes in each setting to let you customize your comfort

**HEATED STEERING WHEEL\***  
helps beat the chill on frosty days

**MOOD LIGHTING\***  
lets you choose from a range of colors to accent key areas throughout the cabin

**ACOUSTIC GLASS**  
on the windshield and front doors\*  
reduces road noise for a quieter ride



DEALER ePROCESS





“SPEAK UP,” “MY TURN TO CHARGE,” AND OTHER PHRASES  
WE’RE REMOVING FROM THE ROAD-TRIP LEXICON.

\*Optional feature available only on certain trims. See Features page for availability. 1-5 See last page for endnotes. Simulated screen shown, SX WITH PRESTIGE PACKAGE SHOWN

#### DRIVER TALK\*

allows the driver’s voice to be played through the rear speakers at the touch of a button, making it easier for second- and third-row passengers to hear

#### QUIET MODE (REAR)\*

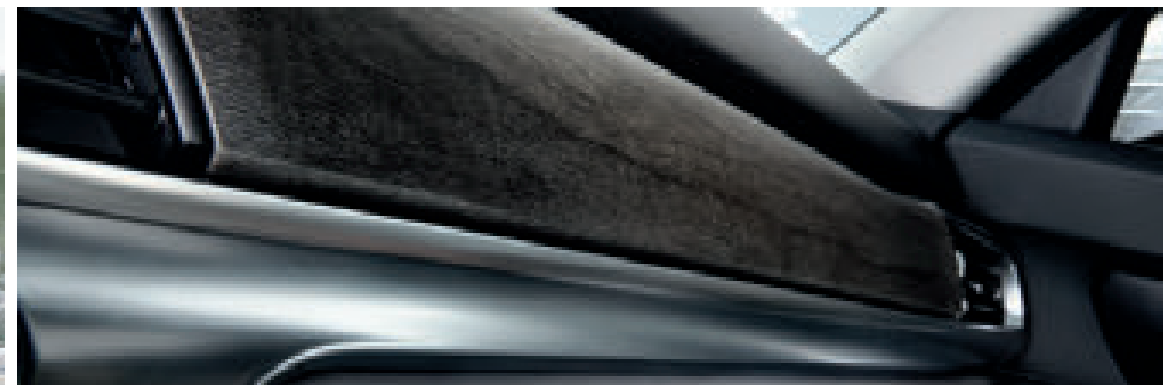
lets you mute the speakers in the second and third rows to accommodate sleeping passengers

#### BLUETOOTH®1 WIRELESS TECHNOLOGY WITH MULTI-POINT CONNECTIVITY\*

allows two users to be connected at the same time, allowing you to easily switch over to a different device for music or media streaming

#### APPLE CarPlay®2 & ANDROID AUTO™3

sync with your compatible smartphone to let you make calls, send texts, or play voicemails via voice command, and even control certain apps through the touch screen



**DUAL-ZONE AUTOMATIC TEMPERATURE CONTROL\***  
gives driver and front passenger separate controls to maintain their own personal climate zone

**REAR AUTOMATIC TEMPERATURE CONTROLS\***  
let front and rear passengers adjust the temperature

**REAR ROOF-MOUNTED DIFFUSED-AIR VENTS**  
let rear passengers diffuse the air flow to a softer, more indirect output when desired

**WIRELESS SMARTPHONE CHARGER5\***  
lets you charge your compatible smartphone in the console storage area for cord-free charging

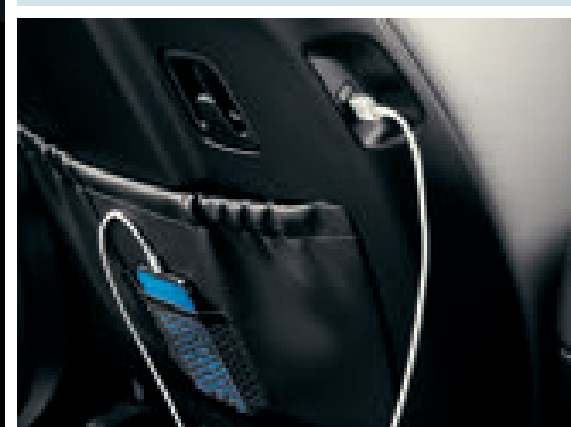


#### REAR OCCUPANT ALERT\*

uses ultrasonic sensors that are designed to detect children or pets in the second or third row, and give visual and audible alerts if it detects movement inside, before and after the vehicle has been locked

#### USB CHARGE PORTS IN EVERY ROW

provide easy access for front and rear passengers to charge their devices



DEALER ePROCESS





## HARTFORD, CT

*For over 200 years, Smith-Worthington Saddlery has made custom products as varied as the places their clients take them — from New England to the California desert.*

### SMITH-WORTHINGTON SADDLERY

Smith-Worthington Saddlery of Hartford, Connecticut, has been designing and producing custom saddles, bridles, and other leather tack since George Washington was president. Renowned for their attention to saddle fit for both horse and rider, and use of traditional materials such as open-grained leather and virgin wool flock stuffing, the company has thrived for over 200 years as much for their quality as for their versatility. In their long and colorful history, they've been tasked with making saddles for cavalries in the Civil War, bridles for Barnum & Bailey's horse-drawn wagons, and even dog harnesses for rugged expeditions to Antarctica. With their deep knowledge, creativity, versatility, and skilled craftsmanship, it's no surprise this family-run business is still going strong — and their products can be spotted across the country and beyond.

**“WE’VE DONE IT ALL. YOU COULD SAY OUR VERSATILITY IS WHAT’S KEPT US GOING ALL THESE YEARS.”** — *Curtis Hanks, Smith-Worthington Saddlery*

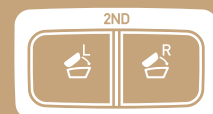
**UP FOR ANYTHING.** Helping you go where you want to go, do what you want to do, and bring what you'll need when you get there is the mission of Telluride's versatile cargo design. The available **SMART POWER LIFTGATE™\*** opens automatically when you stand behind it, and can be customized to your preferred height and speed (normal or fast) — perfect for when your arms are full. The liftgate's wide opening makes it easy to load and unload your gear, while **MULTIPLE CARGO CONFIGURATIONS** accommodate large, bulky items, from riding gear to camping gear† Like Smith-Worthington Saddlery, it's all about meeting your needs.

\*All cargo should be evenly distributed, properly secured, and never piled higher than the seatback.  
†Optional feature available only on certain trims. See Features page for availability. SX WITH PRESTIGE PACKAGE SHOWN



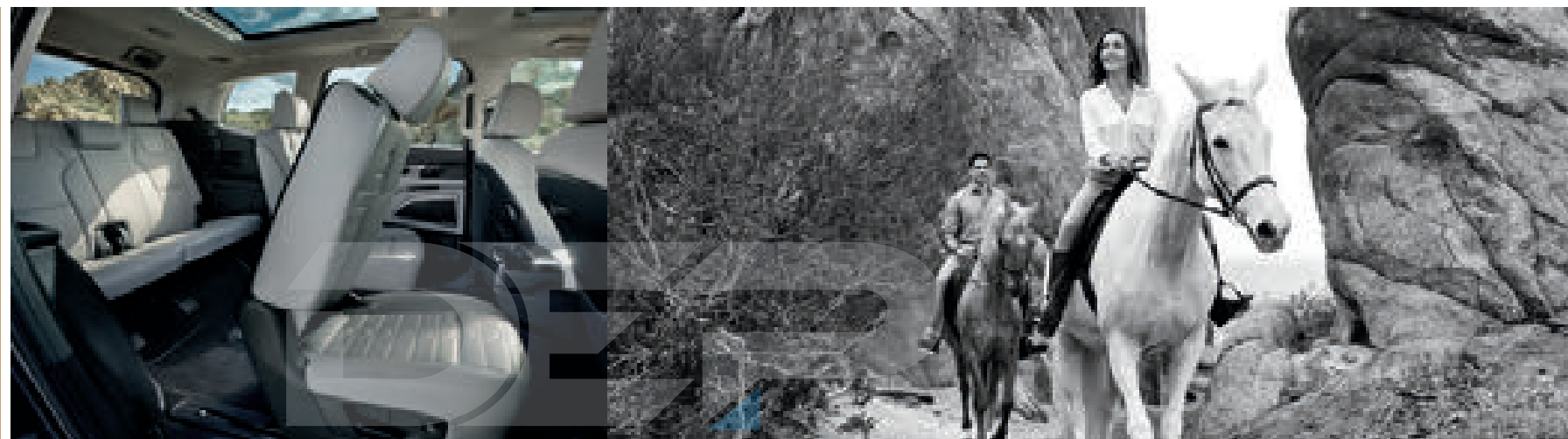


VASTNESS: A CONCEPT AS APPEALING  
INSIDE AS IT IS OUTSIDE.



When you're ready to pack up and go, Telluride's second-row seats **FOLD FLAT AT THE TOUCH OF A BUTTON** to provide abundant cargo space. With the seats in their upright position, rear passengers can easily get in and out of the vehicle thanks to a wide step, enlarged walk-in space, and the **ONE-TOUCH SLIDE-AND-FOLD** feature, which slides and folds the second-row seat forward to give third-row passengers easy access.

\*All cargo should be evenly distributed, properly secured, and never piled higher than the seatback. SX WITH PRESTIGE PACKAGE SHOWN



#### 2-WAY LUGGAGE BOARD

can be opened to increase the storage-area depth for stowing taller items like luggage or sports gear,<sup>†</sup> or closed to create a flat storage area that aligns with the rear seats in their folded-down position

#### CONCEALED UNDER-FLOOR STORAGE

beneath the closed luggage board provides a hidden, sunken storage compartment to organize smaller, lesser-used items

DEALER ePROCESS



## BRING WHAT YOU NEED, DO WHAT YOU LOVE.

Horses, boat, travel trailer — of course you want to bring them with you, so Telluride is up to the task. Its 291-hp, 3.8L V6 engine puts out a capable 262 lb.-ft. of torque to provide up to **5,000 LB. OF TOWING CAPACITY**,<sup>6</sup> allowing you to haul a variety of trailers.

6 See last page for endnote. No system, no matter how advanced, can compensate for all driver errors, driving conditions, accidents, and/or injury. Always drive safely and obey all traffic laws. SX WITH PRESTIGE PACKAGE SHOWN

DE  
DEALER ePROCESS



ON TURNING A ROUGH PATCH  
INTO RECREATION.

Should the road become rocky, Telluride is ready. Its body frame is constructed with **RING-SHAPED REINFORCEMENTS** around the B and D pillars, for enhanced torsional stiffness and **STRUCTURAL STABILITY** — which translates to greater control and confidence tackling rugged terrain. Telluride also features **HILL-START ASSIST CONTROL (HAC)**,<sup>†</sup> designed to automatically hold the brake pressure for two seconds after you take your foot off the brake pedal when starting on a steep hill.



<sup>†</sup>No system, no matter how advanced, can compensate for all driver errors, driving conditions, accidents, and/or injury. Always drive safely and obey all traffic laws. SX WITH PRESTIGE PACKAGE SHOWN





## NASHVILLE, TN

*The music industry is the beating heart of Nashville, earning it the title “Music City” and attracting top talent in audio and technology, like Shani. Telluride shares this passion of blending a high level of technology into its audio, as well as its communications and driver-assistance features.*

### SHANI GANDHI

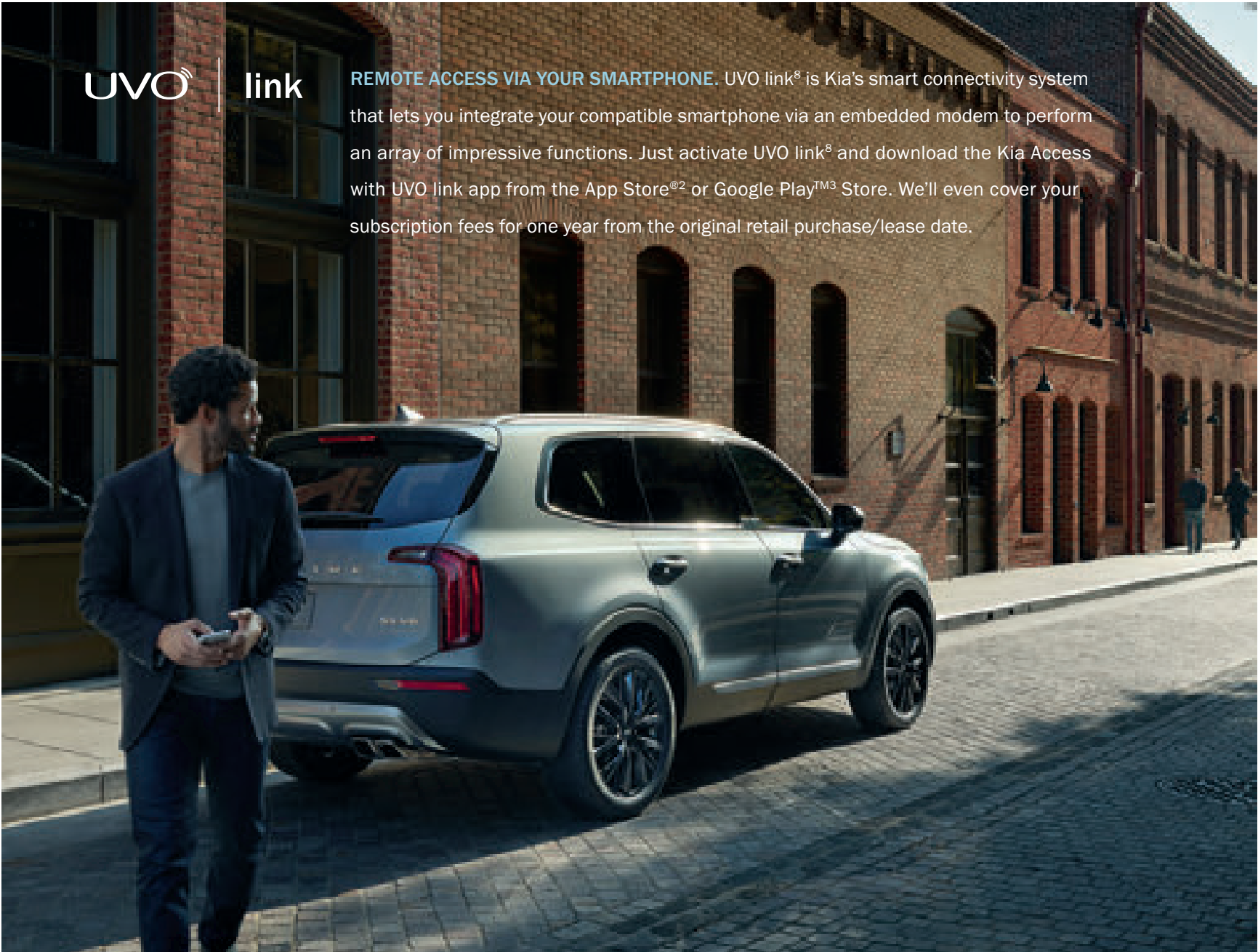
Shani Gandhi is an award-winning music producer and engineer in Nashville, best known for her work with top artists in the Americana and folk genres. Originally from Singapore and raised in Australia, Shani had an academic, science-focused upbringing, and assumed she would continue down a conventional career path — though she always had a strong passion for music, she considered it a “hobby.” It wasn’t until she learned about the engineering side of music that all the pieces came together. As Shani describes it, “As soon as I found out that there was a technical side to music, I realized I could take my hobby and my scientific background and build a career in music.”

**“HOLD ME TO A HIGHER STANDARD.  
I’LL MEET YOU THERE.”** — *Shani Gandhi, music producer and engineer*

**ADVANCED TECHNOLOGY** is the soul of Telluride, enhancing everything from the music that provides the soundtrack to your travels, to embedded modem features and state-of-the-art driver-assistance functions. We’re proud to offer an available 10-speaker **HARMAN KARDON®<sup>7</sup> 630-WATT PREMIUM AUDIO SYSTEM\*** that includes both QuantumLogic™ surround sound and **CLARI-FI™** — an intelligent, real-time, music-restoration technology that restores the crisp, dynamic sound of music that gets lost during the digital audio compression process. Together with the advanced technologies you’ll find on the following pages, we’re confident they’ll meet your own high standard of approval.

\*Optional feature available only on certain trims. See Features page for availability. 7 See last page for endnote. SX WITH PRESTIGE PACKAGE SHOWN





**REMOTE ACCESS VIA YOUR SMARTPHONE.** UVO link<sup>®</sup> is Kia's smart connectivity system that lets you integrate your compatible smartphone via an embedded modem to perform an array of impressive functions. Just activate UVO link<sup>®</sup> and download the Kia Access with UVO link app from the App Store<sup>®2</sup> or Google Play<sup>TM3</sup> Store. We'll even cover your subscription fees for one year from the original retail purchase/lease date.

THINGS YOU CAN DO REMOTELY FROM YOUR SMARTPHONE:

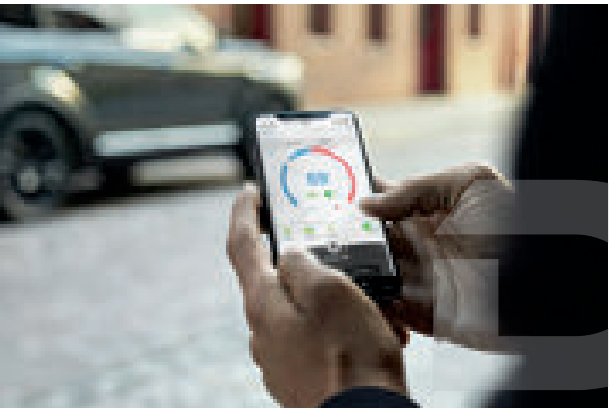


**REMOTE LOCK/UNLOCK/START<sup>9</sup>**  
lets you control the doors or start the engine from afar

**REMOTE CLIMATE CONTROL<sup>9\*</sup>**  
lets you get the air conditioning or heater started to preheat or precool the cabin (available on EX and SX)

**REMOTE REAR OCCUPANCY ALERT<sup>4</sup>**  
can send push notification alerts if movement is detected inside the vehicle

**REMOTE FIND MY CAR<sup>9</sup>**  
can locate where you parked your Telluride, and even give you directions to it



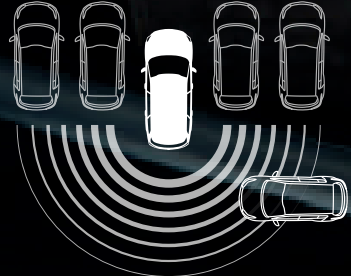
GO TO OWNERS.KIA.COM OR DOWNLOAD THE KIA ACCESS WITH UVO LINK APP TO ACTIVATE



**DRIVE WISE**

**DESIGNED TO LOOK OUT, SPEAK UP, AND EVEN STEP IN.**

Even the best drivers can't be perfect 100% of the time, so we created Kia Drive Wise,\* a suite of advanced driver-assistance technologies. These include an available **SURROUND VIEW<sup>®</sup> MONITOR WITH 10.25" SCREEN<sup>10\*</sup>** which uses four cameras to provide an aerial view around the vehicle to help when parking in tight spots; **REAR CROSS-TRAFFIC COLLISION-AVOIDANCE ASSIST<sup>10</sup>** which uses visual and audible alerts that can help warn of traffic the system detects coming from either side when you're in reverse, and can even automatically apply the brakes in some cases; and **REAR AND AVAILABLE FRONT PARKING DISTANCE WARNING<sup>10\*</sup>** which is designed to give an audible warning if it detects certain objects close to your vehicle when parking.



\*Optional feature available only on certain trims. See Features page for availability. 2-4, 8-10 See last page for endnotes. Simulated screens shown. SX WITH PRESTIGE PACKAGE SHOWN



**SAFE EXIT ASSIST<sup>10</sup>**  
is designed to help prevent rear passengers from exiting the vehicle when the system detects potential hazards approaching. In this case, the system will engage the child locks, plus give an audible and visual alert



**DRIVE  
WISE**

## SENSES, ALERTS, AND HELPS STOP.

Stopping can be as high performance as going, thanks to Telluride's standard advanced systems. These include **FORWARD COLLISION WARNING<sup>10</sup>** designed to help detect slowing or stopped traffic ahead, and alert you if it detects you getting too close. And **FORWARD COLLISION-AVOIDANCE ASSIST<sup>10</sup> WITH PEDESTRIAN DETECTION<sup>10</sup>** which is designed to help detect and alert you of a collision risk or pedestrian approaching, and even automatically apply the brakes in some cases.

10 See last page for endnote. Image shown for illustration only. SX WITH PRESTIGE PACKAGE SHOWN

DEALER ePROCESS





## THE SECRETS TO STAYING CENTERED.

Telluride's advanced technologies include **BLIND-SPOT COLLISION-AVOIDANCE ASSIST**<sup>10</sup> which uses radar to help detect and alert you to vehicles in your blind spot, and even apply corrective braking to help you avoid some hazardous lane-change decisions. **LANE DEPARTURE WARNING**<sup>10</sup> can help alert you with a warning beep if the system detects you drifting too close to lane markers without signaling. If you fail to respond to the warning, **LANE KEEPING ASSIST**<sup>10</sup> is designed to detect the vehicle getting close to lane markers, and can apply steering input to help prevent you from drifting into another lane. **SMART CRUISE CONTROL WITH STOP & GO**<sup>10</sup> is designed to automatically adjust your driving speed to help maintain a predetermined distance from the vehicle detected ahead of you. **LANE FOLLOWING ASSIST**<sup>10</sup> can provide a degree of automatic steering control in certain circumstances during Smart Cruise Control operation based on analyzing lane markings and radar-based front-vehicle information that it detects. Finally, **HIGHWAY DRIVING ASSIST**<sup>11\*</sup> is designed to automatically adjust the speed based on the speed limit of selected federal highways detected through the available Navigation system.<sup>12\*</sup>



**HEAD-UP DISPLAY**<sup>13\*</sup>  
projects a color readout of important info on the windshield to help keep your eyes forward



## EXTRA HELP WHERE YOU NEED IT.

**BLIND-SPOT VIEW MONITOR**<sup>10\*</sup>  
activates within the instrument panel when you turn on the blinker to change lanes, displaying the blind spot in the direction your turn signal is indicating

**DRIVER ATTENTION WARNING**<sup>14</sup>  
is designed to give you a warning signal to take a break if it detects inattentive driving practices



# WEST POINT, GEORGIA: A SMALL TOWN DOING BIG THINGS.

Chances are, you've never heard of **WEST POINT**. To be honest, we hadn't either, at least not when we began searching for a location for our first U.S. manufacturing facility. But there was something about the people of West Point that made a lasting impression. For around 150 years, West Point had been the hub of a thriving textile industry. But after the decline of textile manufacturing in the late 1990s, this **COMMUNITY OF HIGHLY SKILLED CRAFTSPEOPLE**, factory workers, and technicians was looking for a new challenge, an opportunity to re-channel its immense talent and unstoppable spirit. It was as if Kia and the people of West Point were destined to join forces to do something amazing. By 2006, our plan was formed; a 2,200-acre state-of-the-art manufacturing and training facility followed, and along the way, **A NEW KIA FAMILY WAS BORN** — now around 14,000 members strong, including plant workers and suppliers. Our first vehicle came off the line here in 2009, and since then, more than 2.6 million Kias have been assembled, including Telluride.<sup>†</sup> The people of West Point may not be known for who they are — but in what they do, in every Kia they build, they give it everything.



## WEST POINT, GA

*population 3,800, is home to Kia's state-of-the-art manufacturing facility, where you'll find Sorentos, Optimas, and now, Tellurides rolling off the assembly line.<sup>†</sup>*



<sup>†</sup>Kia Telluride, Sorento, and Optima (not including Hybrid and Plug-In Hybrid) are assembled in the United States from U.S. and foreign parts.



FEATURES

	LX	S	EX	SX
MECHANICAL & EXTERIOR				
3.8L Gasoline Direct Injection (GDI) V6 engine	●	●	●	●
8-speed automatic transmission	●	●	●	●
Active On-Demand AWD w/AWD lock & snow mode	○	○	○	○
Torque Vectoring Corner Control (TVCC)	●	●	●	●
18-inch alloy wheels	●	—	—	—
18-inch alloy wheels w/machine finish	—	—	●	—
20-inch alloy wheels w/machine finish	—	●	—	—
20-inch alloy wheels w/black finish	—	—	—	●
Self-leveling rear suspension	—	—	○	○
Drive Mode Select	●	●	●	●
Electronic Parking Brake	●	●	●	●
Single sunroof	—	●	●	—
Dual sunroof (rear fixed glass)	—	—	—	●
LED headlights w/High Beam Assist	—	—	—	●
LED Daytime Running Lights	●	●	●	●
LED fog lights	—	—	—	●
Acoustic front windshield	●	●	●	●
Acoustic front door windows	—	—	●	●
Body-color rear spoiler	●	●	●	●
Silver-painted skid plate	—	●	●	●
Silver-painted roof rails	—	●	●	—
Satin chrome roof rails	—	—	—	●

INTERIOR & CONVENIENCE

UVO link <sup>8</sup>	●	●	●	●
AM/FM/SiriusXM <sup>®15</sup> audio system w/8" touch screen	●	●	—	—
AM/FM/SiriusXM <sup>®15</sup> audio system w/10" touch screen	—	—	●	—
Harman Kardon <sup>®7</sup> 630-watt premium audio QuantumLogic™ surround-sound system w/Clari-Fi™ & 10 speakers	—	—	—	●
Apple CarPlay <sup>®2</sup> & Android Auto™ <sup>3</sup>	●	●	●	●
Premium Navigation <sup>12</sup> w/10.25" touch screen	—	—	●	●
Bluetooth <sup>®1</sup> wireless technology w/multi-point connectivity	—	—	●	●
USB charging ports (5 on LX/S, 6 on EX/SX)	●	●	●	●
Driver Talk	—	—	●	●
Quiet Mode (rear)	—	—	●	●
Rear Occupant Alert <sup>4</sup>	●	●	●	●
Safe Exit Assist <sup>10</sup>	●	●	●	●
Head-Up Display <sup>13</sup>	—	—	—	○
Push-button start w/Smart Key	●	●	●	●
Wireless smartphone charger <sup>5</sup>	—	—	●	●
Dual-zone automatic temperature control	—	—	●	●
Rear automatic temperature control	—	—	●	●
Diffused-air roof vents (2nd & 3rd rows)	●	●	●	●
Smart Power Liftgate™	—	—	●	●
Heated steering wheel	—	—	○	○†
110-Volt Inverter	—	—	—	○
Rear side-window sunshades	—	—	●	●
Mood lighting	—	—	—	●

	LX	S	EX	SX
KIA DRIVE WISE <sup>10</sup>				
Blind-Spot Collision-Avoidance Assist	●	●	●	●
Blind-Spot View Monitor	—	—	—	●
Driver Attention Warning <sup>14</sup>	●	●	●	●
Forward Collision Warning	●	●	●	●
Forward Collision-Avoidance Assist w/Pedestrian Detection	●	●	●	●
Highway Driving Assist <sup>11</sup>	—	—	●	●
Lane Departure Warning	●	●	●	●
Lane Keeping Assist	●	●	●	●
Parking Distance Warning — Reverse	●	●	●	●
Parking Distance Warning — Forward	—	—	—	●
Rear Cross-Traffic Collision-Avoidance Assist	●	●	●	●
Smart Cruise Control w/Stop & Go	●	●	●	●
Lane Following Assist	●	●	●	●
Surround View Monitor	—	—	—	●
Rear View Monitor w/Dynamic Parking Guidance	●	●	●	●

SEATING & TRIM

SOFINO seat trim	●	●	—	—
Leather seat trim	—	—	●	●
Nappa leather seat trim	—	—	—	○
8-passenger seating w/60/40 remote split-folding 2nd-row bench	●	○	●	—
7-passenger seating w/50/50 remote split-folding 2nd-row captain chairs	—	●	—	●
10-way power-adjustable driver's seat w/lumbar support	—	●	●	—
12-way power-adjustable driver's seat w/lumbar support & seat-cushion extension	—	—	—	●
Integrated Memory System for driver's seat & outside mirrors	—	—	—	●
8-way power-adjustable front passenger seat	—	—	●	●
Heated front seats	—	●	●	●
Ventilated front seats	—	—	●	●
Heated & ventilated 2nd-row seats	—	—	—	○
2nd-row one-touch slide-and-fold seats	●	●	●	●
60/40 split-folding 3rd-row seats	●	●	●	●
3rd-row reclining seatbacks	●	●	●	●

SAFETY<sup>16</sup>

Dual front advanced airbags	●	●	●	●
Dual front seat-mounted side airbags	●	●	●	●
Full-length side curtain airbags	●	●	●	●
Driver's knee airbag	●	●	●	●
Electronic Stability Control (ESC)	●	●	●	●
Vehicle Stability Management (VSM)	●	●	●	●
Hill-start Assist Control (HAC)	●	●	●	●
Rollover sensor	●	●	●	●
Side impact sensor	●	●	●	●

SPECIFICATIONS

ENGINE	
Type	6-cylinder, aluminum block & head
Valve gear	DOHC w/Dual CVVT
Horsepower	291 hp @ 6,000 rpm
Torque	262 lb.-ft. @ 5,200 rpm
Transmission	Electronically controlled 8-speed automatic
AWD (optional)	Active On-Demand AWD
Towing capacity	Up to 5,000 lb. (see Owner's Manual) <sup>6</sup>

BODY & CHASSIS

Body type	Steel unibody w/Iso-Structure™ construction	
Front suspension	Independent, MacPherson struts, coil springs, stabilizer bar	
Rear suspension	Independent, multi-link, stabilizer bar	

TIRES & BRAKES

Tire size	245/60R18 (LX, EX)	245/50R20 (S, SX)
Brake type	Dual-diagonal, split-circuit, power-assisted braking	
Front/rear	13.4-in. ventilated disc/12.0-in. solid disc	

2020 EPA-ESTIMATED FUEL ECONOMY<sup>17</sup>

	FWD	AWD
City/Highway/Combined MPG	20/26/23	19/24/21
Fuel tank capacity (gallons)	18.8	18.8

PACKAGES

TOWING PACKAGE (EX, SX ONLY)<sup>6</sup>

Self-leveling rear suspension
Tow hitch

DIMENSIONS

Wheelbase		114.2 in.			
Track	Front	67.2 in.			
	Rear	67.6 in.			
Length		196.9 in.			
Width		78.3 in.			
Height	w/o roof rails	68.9 in. (LX)			
	w/roof rails	69.3 in.			
Ground clearance		8.0 in.			
Approach/departure angle		17.0 degrees/20.9 degrees			
Headroom (front/middle/rear)					
	w/o sunroof	40.9 in./40.2 in./38.1 in.			
	Single sunroof	39.5 in./40.2 in./38.1 in.			
	Dual sunroof	39.5 in./38.8 in./37.8 in.			
Shoulder room (front/middle/rear)		61.6 in./61.2 in./55.3 in. (middle row: 59.9 in. w/rear side-window sunshades)			
Legroom (front/middle/rear)		41.4 in./42.4 in./31.4 in.			
Hip room (front/middle/rear)		58.9 in./58.0 in./43.7 in.			
Cargo volume	Behind 1st row	87.0 cu. ft.			
	Behind 2nd row	46.0 cu. ft.			
	Behind 3rd row	21.0 cu. ft.			
Total interior volume		178.1 cu. ft.			
Curb weight	8 passenger	7 passenger			
	FWD	AWD	FWD	AWD	
	Minimum	4,112 lb.	4,255 lb.	4,211 lb.	4,354 lb.
	Maximum	4,211 lb.	4,354 lb.	4,317 lb.	4,482 lb.

PRESTIGE PACKAGE (SX ONLY)

Active On-Demand AWD w/AWD lock & snow mode
Nappa leather seat trim
Head-Up Display <sup>13</sup>
Heated & ventilated 2nd-row seats
Heated steering wheel
Rain Sensing Wipers
110-Volt Inverter
Premium cloth headliner & pillars

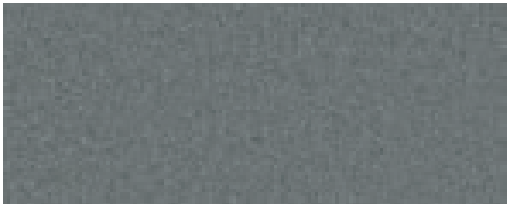
1-8, 10-17 See last page for endnotes.

† = Available on AWD only   ● = Standard   ○ = Optional   — = Not available

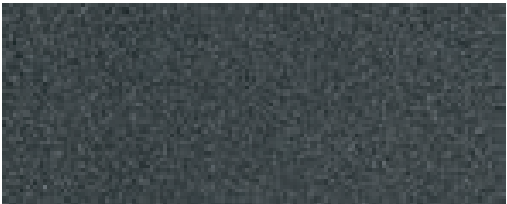
EXTERIOR COLORS



SNOW WHITE PEARL (LX, S, EX, SX)



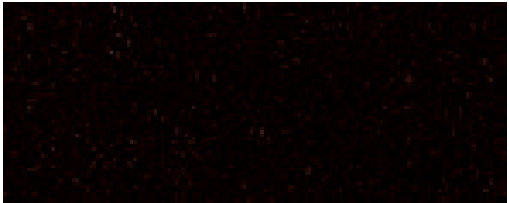
EVERLASTING SILVER (LX, S, EX, SX)



GRAVITY GREY (LX, S, EX, SX)



EBONY BLACK (LX, S, EX, SX)



BLACK COPPER (SX)



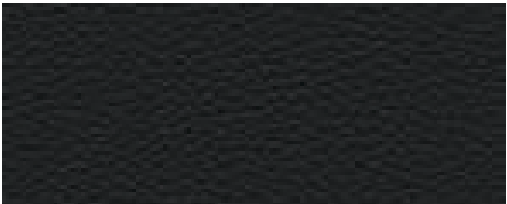
SANGRIA (LX, S, EX)



DARK MOSS (S, EX, SX)

Actual colors may vary from printed brochure.  
See [kia.com/telluride](http://kia.com/telluride) for interior combinations.

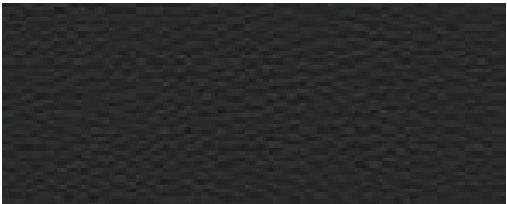
INTERIOR COLORS



BLACK SOFINO TRIM (LX, S)



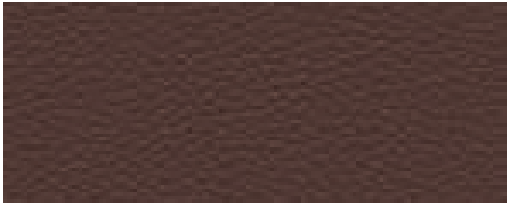
GRAY SOFINO TRIM (S)



BLACK LEATHER TRIM (EX, SX)



GRAY LEATHER TRIM (EX, SX)



ESPRESSO BROWN LEATHER TRIM (SX)



BUTTERSCOTCH LEATHER TRIM (SX)



BLACK NAPPA LEATHER TRIM (SX)<sup>†</sup>



GRAY NAPPA LEATHER TRIM (SX)<sup>†</sup>



DUNE BROWN NAPPA LEATHER TRIM (SX)<sup>†</sup>

<sup>†</sup>Available on Prestige Package only.

ENDNOTES

**1.** The *Bluetooth*® word mark and logos are registered trademarks owned by Bluetooth SIG, Inc. and any use of such marks by Kia is under license. A compatible *Bluetooth*®-enabled cell phone is required to use *Bluetooth*® wireless technology. **2.** Apple, the Apple logo, App Store, Apple CarPlay, and iPhone are trademarks of Apple Inc., registered in the U.S. and other countries. **3.** Vehicle user interface is a product of Google and its terms and privacy statements apply. Requires the Android Auto app on Google Play and an Android-compatible smartphone running Android™ 5.0 Lollipop or higher. Data plan rates apply. Android Auto is a trademark of Google LLC. **4.** This system is not a substitute for one's attention and may not detect all movement within the vehicle. Always check the vehicle interior when exiting the vehicle. Rear Occupant Alert notifications require a UVO subscription, a compatible smartphone, and a wireless signal with good coverage to function. Normal cellular service rates may apply. **5.** Charging system only works with select devices. Refer to the vehicle's Owner's Manual for warnings and instructions. **6.** Towing requires additional equipment. See Owner's Manual for towing capacity, and additional information and warnings. **7.** ©2019 Harman International Industries, Inc. All rights reserved. Harman Kardon is a registered trademark of Harman International Industries, Inc. **8.** Purchase/lease of a new 2020 Kia Telluride vehicle with UVO link includes a complimentary 1-year subscription starting from new vehicle retail sale/lease date as recorded by the dealer. After the complimentary 1-year UVO link subscription expires, continued access to UVO link will require a paid subscription at the then-current subscription rate or your use of UVO link will immediately terminate. Use of UVO link is subject to agreement to the UVO Privacy Policy (available at [owners.kia.com](http://owners.kia.com)) and Terms of Service (available at [owners.kia.com](http://owners.kia.com)). UVO is transferable to subsequent owner(s) during the original UVO service term. Only use UVO when safe to do so. Kia Access with UVO link app is available from the App Store® or Google Play™ Store. Kia Motors America, Inc. reserves the right to change or discontinue UVO at any time without prior notification or incurring any future obligation. Message and data rates may apply. Cellular and GPS coverage are required to use most features. UVO features may vary by model, model year, and trim level. Features and specifications are subject to change. For more on details and limitations, visit [owners.kia.com](http://owners.kia.com) or your authorized Kia dealer. **9.** Remote features require a UVO activation, a compatible smartphone, and a wireless signal with good coverage to function. Normal cellular service rates may apply. Do not use remote climate control if vehicle is in an enclosed area (e.g., closed garage) or a partially enclosed area without ventilation. Close all doors leading from adjacent living areas to the vehicle area before executing a remote climate control command. **10.** These features are not substitutes for safe driving and may not detect all objects surrounding vehicle. Always drive safely and use caution. **11.** Highway Driving Assist is not a

substitute for safe driving, may not detect all objects around the vehicle, and only functions on certain federal highways. Always drive safely and use caution. **12.** Distracted driving can result in a loss of vehicle control. When operating a vehicle, never use a handheld device or vehicle system that takes your focus away from safe vehicle operation. Navigation is for information purposes only, and Kia does not make any warranties about the accuracy of the information. **13.** Failure to pay attention to travel conditions and vehicle operation could result in loss of vehicle control. Always drive safely and use caution. **14.** Driver Attention Warning is not a substitute for safe driving and may not detect all instances of inattentive driving practices. Failure to pay attention to travel conditions and vehicle operation could result in loss of vehicle control. Always drive safely and use caution. **15.** SiriusXM® audio and data services each require a subscription sold separately, or as a package, by Sirius XM Radio Inc. **If you decide to continue service after your 3-month All Access trial subscription, which is included with your newly purchased or leased vehicle, the subscription plan you choose will automatically renew thereafter and you will be charged according to your chosen payment method at then-current rates. Fees and taxes apply. To cancel, you must call SiriusXM at 1-866-635-2349. See SiriusXM Customer Agreement for complete terms at [www.siriusxm.com](http://www.siriusxm.com). All fees and programming subject to change. Traffic information not available in all markets. See [siriusxm.com/traffic](http://siriusxm.com/traffic) for details.** Sirius, XM, SiriusXM, and all related marks and logos are trademarks of Sirius XM Radio Inc. Satellite and streaming lineups may vary slightly. **16.** For maximum protection, always wear your seat belt. No system, no matter how advanced, can compensate for all driver errors, driving conditions, and/or injury. **17.** Based on EPA estimates. Actual mileage will vary with options, driving conditions, driving habits, and your vehicle's condition. **18.** Warranties include 10-year/100,000-mile powertrain and 5-year/60,000-mile basic. All warranties and roadside assistance are limited. See retailer for warranty details.

The content in this brochure is based upon information available at the time of printing and is subject to change without notice. Kia Motors America, Inc. makes no guarantees or warranties, either expressed or implied, with respect to the accuracy of the content presented. Please see [kia.com](http://kia.com) for the most up-to-date vehicle information. Vehicles shown include optional equipment, and video and camera screens are simulated. See your Kia retailer or [kia.com](http://kia.com) for details on Kia's available limited warranties. ©2019 Kia Motors America, Inc. Reproductions of this material are prohibited without the expressed written approval of Kia Motors America, Inc.

Kia Motors America, Inc. P.O. Box 52410 Irvine, CA 92619-2410 1-800-333-4KIA

INDUSTRY-LEADING WARRANTY PROGRAM<sup>18</sup>

Kia engineers are passionate about producing vehicles that are exceptionally well designed and reliable. Their dedication to quality and attention to detail give Kia the confidence to back the Telluride, and every model, with an industry-leading warranty program.

10-year/100,000-mile limited powertrain warranty

5-year/60,000-mile limited basic warranty

5-year/100,000-mile limited anti-perforation warranty

5-year/60,000-mile 24-hour roadside assistance

